

SENATORIAN

1952



WASHINGTON  
HSTON





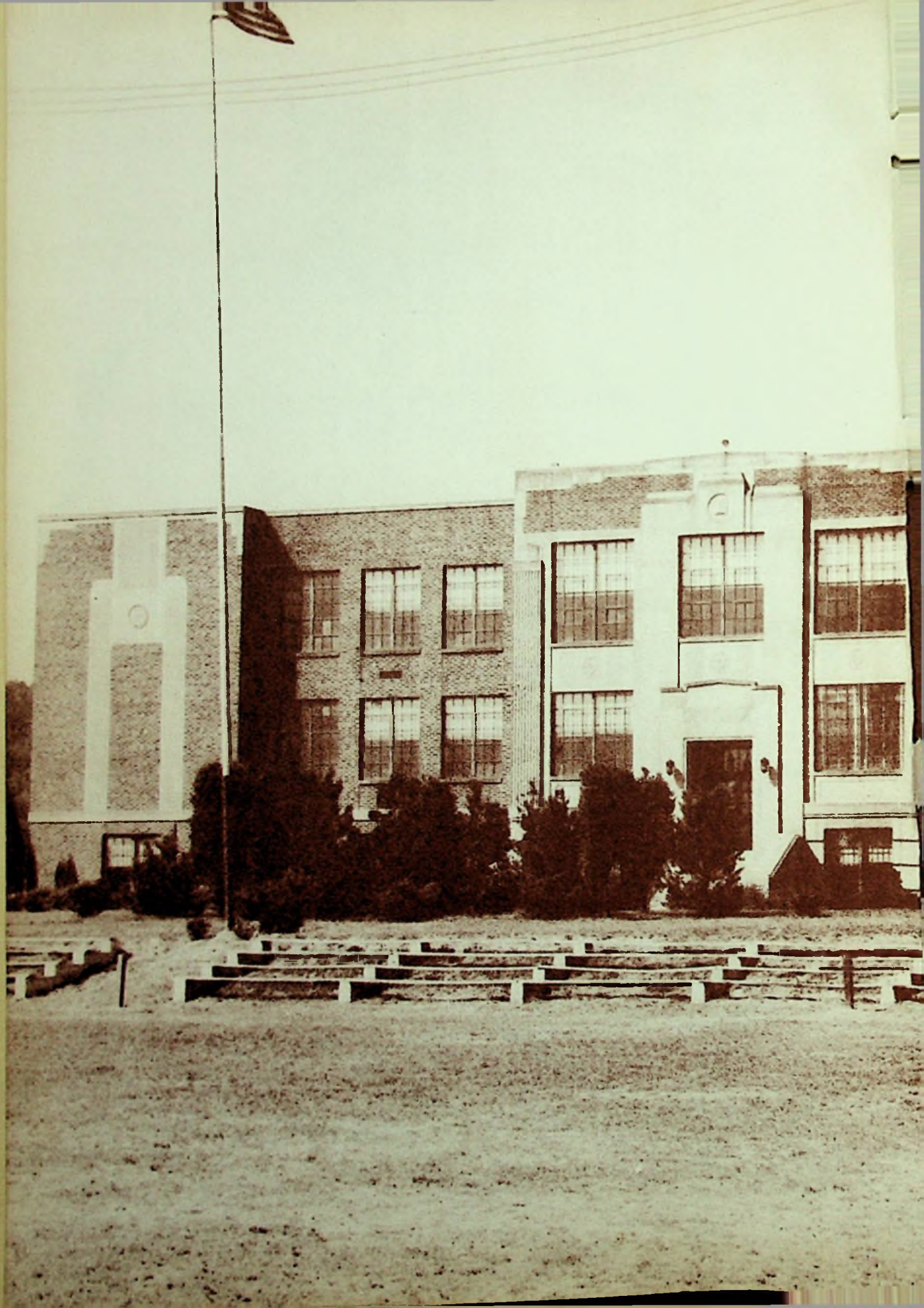
# dedication

We, the Class of Nineteen Hundred and Fifty-Two, hereby dedicate this, our high school annual, to the most important benefactor of our education.

To the ones whose only aim has been to see their children advance thus far—who have endured hardships and sacrifices for us—and who have guided us throughout our school years, we owe a debt of gratitude.

Mere words cannot express our sincere appreciation, but we humbly give our thanks to you . . . . .  
**OUR PARENTS.**







# Administration



In this year's annual the staff has secured several local scenic pictures. This scene was made at Lake Roosevelt.

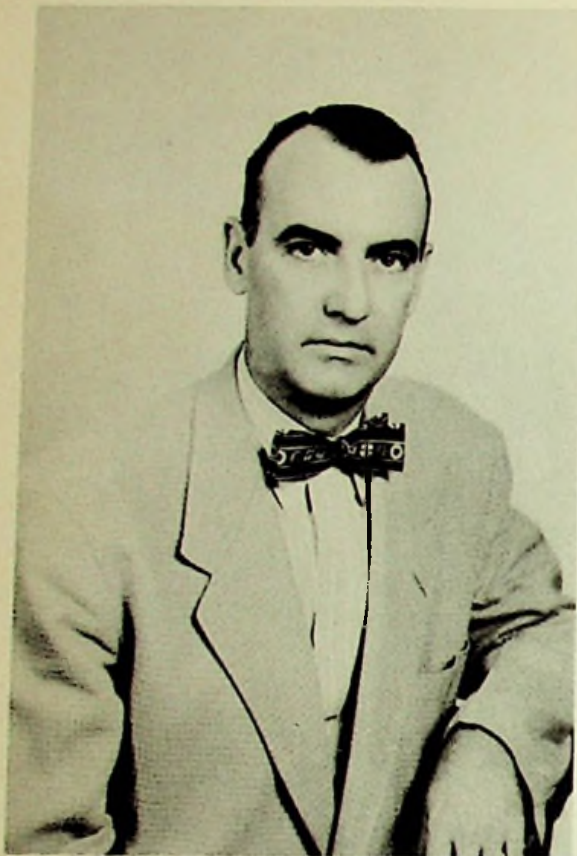


**MR. FRANK B. ROLF**  
*Supervising Principal*

Mr. Rolf began teaching some twenty-three years ago, and has climbed very steadily in the field of education. He served as grade principal at Wheelersburg, Glendale, and Friendship schools before becoming supervising principal of the newly completed Washington High School in 1939.

Today, the excellent standing of Washington High School in scholarship, student activities, music, athletics, and community leadership attest to the high degree of his efficiency.

Congratulations, Mr. Rolf, for a job well done.



**MR. EDWARD R. McCOWEN**  
*County Superintendent of Schools*

Superintendent McCowen received his B. S. degree in education from Ohio University; his Master's degree from Northwestern University. He has also attended Otterbein College and Harvard University. Through his leadership, numerous new courses have been added to the curriculum and a well planned development and extension of all rural schools have taken place.

The Superintendent refreshes our minds with the statement, "Go Forward Scioto County Schools",—a slogan that has been used for many years. We are also reminded of his quotation which has been repeated many times—"The best is none too good for our boys and girls."

**DR. CLYDE HISSONG**

*State Superintendent of Public Instruction*

The State Director of Education received his B. S. degree at Miami University; his Master's at Teacher's College, Columbia University; and his Ph. D. from Ohio State University. He is a Phi Beta Kappa as well as a member of Kappa Delta Pi and Phi Delta Kappa.

From 1929 to 1945, Dr. Hissong was dean of Bowling Green State University's College of Education. He has written two books and contributed to many educational journals. An active Kiwanian, he served as Lieutenant Governor of the Ohio District in 1939-40, and as Governor of the Ohio District in 1942.





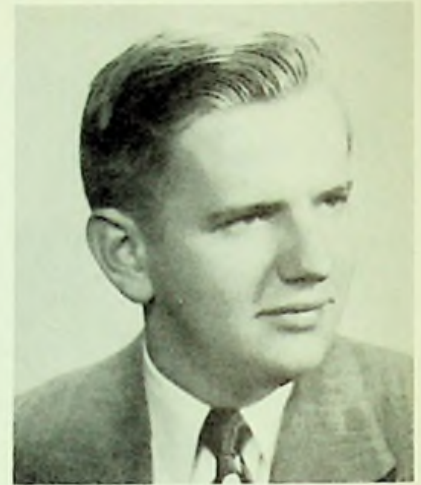


**WASHINGTON BOARD OF EDUCATION**

**SEATED:** Mrs. Bessie Greene, Clerk. **STANDING,** Left to Right: Mr. Farrell Vaughters, Mr. Charles Prince, President, Mr. Elza Callendar, and Mr. Lowell Strickland, Vice-President.

Inset is of Mrs. Margaret Parry, newly elected board member, replacing Mrs. Greene, who chose not to run.

# Faculty



**MR. RICHARD BEADLE**, "*Mathematics*". A graduate of Ohio University, Mr. Beadle was beginning his first year of teaching at Washington. After two months, he was called into service with the United States Army.

**MISS MARY BENNETT**, "*Commercial*". Miss Bennett, a graduate of Ohio University, is one of the teachers who started teaching at Washington when the new school was built.

**MISS JEAN BLAIR**, "*Music*". A graduate of the Bob Jones University for Music, Miss Blair began her teaching career at Washington during the second semester of the school year 1950-1951. She is one of the advisors of the sophomore class.

**MR. RUSSELL CHRISTIAN**, "*American History*". Mr. Christian, a graduate of Wilmington College, is another member of the faculty who has taught at Washington ever since it has been one of the county high schools. He was head basketball coach until last year. This year he is one of the junior class sponsors and the advisor of our annual.

**MR. LEON DAVIS**, "*World History*". Mr. Davis, who has been a faculty member for two years, is a graduate of Rio Grande College. This year he is head basketball coach and sophomore class sponsor.

**T & T GARAGE**

**MRS. MARCELLA STEVENS  
DONLEY**

*Latin*

Mrs. Donley, a graduate of Ohio State University, has been teaching at Washington for eleven years. She has served as librarian all the years she has been teaching here. This year she is the dean of girls and Senior Class Advisor.



**MR. HAROLD E. EVERLING**  
*Social Science and Biology*

Mr. Everling, a graduate of Eastern Kentucky, has been head football coach for the past six years. He is one of the Senior Class Advisors.

**MR. DALE W. GILLETTE**  
*Instrumental Music*

A graduate of Bowling Green State University, Mr. Gillette, our band director, has been on the Washington faculty for twelve years.

**MRS. KATHRYN KEGLEY  
HOPKINS**

*Science, Spanish*

Mrs. Hopkins, a graduate of Ohio State University, has been on the teaching staff at Washington for eight years. This year she is the faculty advisor of the school paper.



**MR. JAMES EDWARD KETTER**  
*Chemistry, Physics*

A graduate of Ohio University, Mr. Ketter is teaching his first year at Washington.

**MR. FOSTER R. KIRKER**  
*American History*

Mr. Kirker attended Wilmington College before coming to Washington High School to teach in the eighth grade. He is one of the three advisors for this class.



**MR. CHARLES B. McCLURE**  
*Commercial*

A graduate of Indiana State University, Mr. McClure has been a member of the faculty for three years.

**MRS. ELIZABETH RASE  
MELVIN**

*Home Economics*

Mrs. Melvin, a graduate of Wilmington College, has been a member of the Washington faculty for three years. She is one of the advisors of the Junior Class. During her years at Washington she has been the faculty advisor for the Junior-Senior Prom.



**SPURLOCK'S MARKET**

Galena Pike  
West Portsmouth

*Fresh Vegetables & Home Killed Meats*

Phone  
7-4453



**MRS. AMY EVANS MITCHELL**  
*English*

Mrs. Mitchell, a graduate of Ohio University, has been a member of the Washington teaching staff for twelve years. She is the faculty advisor of the National Honor Society.

**MR. SAMUEL MOORE**  
*Industrial Arts*

Mr. Moore, who graduated from Ohio University, has been teaching at Washington for six years.



**MR. KENNETH EUGENE RAPP**  
*Science and Agriculture*

Mr. Rapp, a graduate of Wilmington College, began teaching last year at Washington, his alma mater—he was a member of the class of 1943.

**MISS HELEN RATLIFF**  
*Physical Education and English*

A graduate of Wilmington College, Miss Ratliff has been teaching at Washington for six years. This year she is one of the sponsors of the Freshmen Class. She is a graduate of Washington High School in the class of 1942.



**MRS. KATHLEEN ROLF**  
*English and Literature*

Mrs. Rolf attended Ohio University. She has been with the teaching staff at Washington for eight years. She is class advisor for the eighth grade.

**MRS. MARGARET STRICKLAND**  
*Mathematics*

For the past five years Mrs. Strickland, who went to Miami University, has been teaching Mathematics at Washington. She is class advisor for the eighth grade.




**MR. GORDON J. WILLIAMS**  
*Mathematics*

Mr. Williams, a graduate of Cedarville College, is assistant basketball coach. This is his second year at Washington.

**MRS. MARGARET SMITH YONOVITZ**  
*English*

Mrs. Yonovitz, a graduate of the College of Wooster, has been at Washington for three years.

# Seniors



Crossing the towpath during flood time—  
just before traffic is stopped.



### ***Senior Class Officers***

*Kneeling, Left to Right: Vernon Flannery, Secretary; Paul Conley, President. Standing, Harold Keene, Vice-President; Tom Spurlock, Treasurer.*



Richard Homer Bailey, Jr.  
"Bruner"  
Industrial Arts



Kenneth Edward Bailey  
"Parson"  
Industrial Arts



Dale Nolen Biggs  
"Dale"  
Industrial Arts



Harold Ray Blevins  
Commercial



Dolcia Ann Bower  
"Lucky"  
Commercial



Mary Catherine Boyd  
"Catty"  
Commercial



Charles W. Bricker, Jr.  
"Brid"  
Industrial Arts



Robert Clinton Brown  
"Bob"  
College Preparatory



Donald Lee Caudill  
"Don"  
Commercial

FORESTDALE RADIO & TELEVISION SERVICE CO.  
Don Hinze, Proprietor

1215 Calvert Lane

West Portsmouth



Leslie Boyd Cochran, Jr.  
*"Les"*  
*Commercial*



Billie Estelle Conley  
*"Bill"*  
*College Preparatory*



Mary Ethel Conley  
*"Mary"*  
*Commercial*



Paul Douglas Conley  
*"Steady"*  
*Industrial Arts*



Patsy Elaine Cooper  
*"Pats"*  
*Commercial*



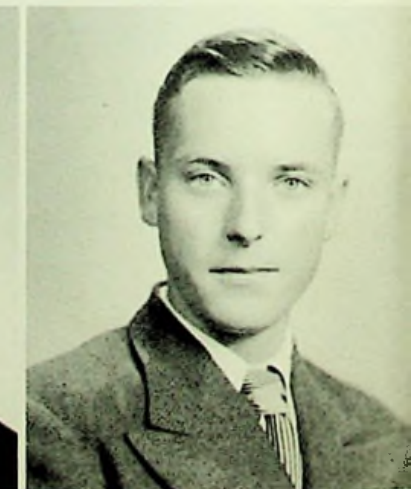
Marie Agnes Davis  
*"Quin"*  
*Home Economics*



Ethel Louise Denning  
*"Tiny"*  
*College Preparatory*



Charles William Elrod  
*"Chuck"*  
*Industrial Arts*



Kenneth Ray Elrod  
*"Sed"*  
*Industrial Arts*

**BORDEN'S DAIRY**

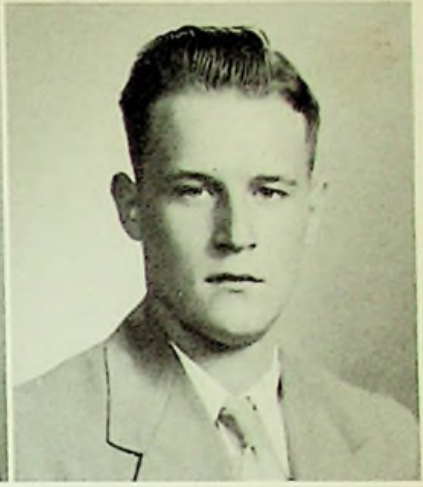




Ida Mae Eulett  
"Nip"  
Commercial



Vernon Preston Flannery  
"Pee Wee"  
Industrial Arts



Ronald Franklin Floyd  
"Ron"  
Industrial Arts



Walter Frasure  
"Wally"  
Industrial Arts



Donald Lee Hall  
"Don"  
Industrial Arts



Harold Eugene Hall  
"Harold"  
Industrial Arts



Ruth Pauline Hill  
"Shortie"  
Home Economics



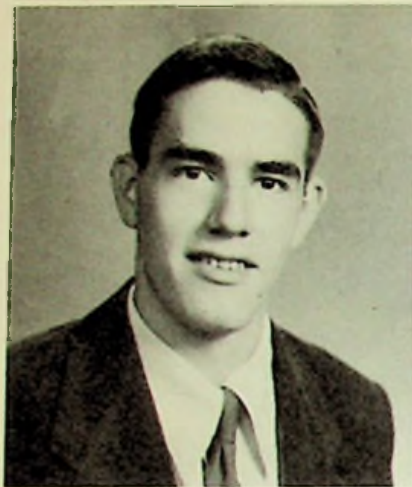
Mary Geraldine Himes  
"Frenchie"  
College Preparatory



Flora Sue Hoover  
"Suzie"  
Commercial

SCOTT'S SPORTING GOODS

"Everything for the Sportsman"



Anton Keith Hopkins  
*"Hop"*  
 Industrial Arts



Alberta Howard  
*"Birdie"*  
 Home Economics



Bobbie Jean Howard  
*"Bobbie"*  
 Home Economics



Roberta Jean Hunnel  
*"Blondie"*  
 Home Economics



Donna Lee Jones  
*"Donnie"*  
 Home Economics



Carl Leslie Jordan  
*"Doc"*  
 Industrial Arts



Betty Lou Journey  
*"Butch"*  
 Commercial



Harold Edward Keene  
*"Fish"*  
 College Preparatory



Dolores Ann Keyser  
*"Dodie"*  
 Home Economics



Robert Lee Kennard  
"Bloomer"  
Industrial Arts



Janet Maxine Kitchen  
"Jan"  
Commercial



Barbara Gayle Knauff  
"Peggy"  
Commercial



Lois Carol Lakin  
"Carol"  
College Preparatory



Bertie Lou McCann  
"Bert"  
Home Economics



Glenna Ruth McGovney  
"Major"  
Commercial



Jacqueline Elizabeth McGraw  
"Jackie"  
Commercial



Norma Claire Martin  
"June"  
Commercial



Harold Edward Mefford  
"Buzz"  
Industrial Arts

RAY O'DELL  
INTERIOR AND EXTERIOR DECORATING



Paul Bernard Meyers  
"Toots"  
Industrial Arts



Mary Magdlene Montgomery  
"Maggie"  
Commercial



Roma Lovella Mullen  
"Rome"  
College Preparatory



Ruth Ann Murta  
"Ruthie"  
Commercial



Edward Lee O'Dell  
"Wing"  
Industrial Arts



Janet Ann Parker  
"Jan"  
Home Economics



Jean Ann Payne  
"Jeannie"  
Commercial



Lillie Virginia Pendleton  
"Jenny"  
Commercial



Lois Jean Porter  
"Punkin"  
Home Economics

NOEL BRIDWELL



- 1. Etta Louise Rayburn  
"Lulu"  
College Preparatory
- 2. Mary Elizabeth Renn  
"Liz"  
Home Economics
- 3. Anna Jean Ridgeway  
"Rusty"  
Commercial
- 4. Thelma Ruth Sartin  
"Doc"  
Commercial



- 5. Franklin Dee Schackart  
"Hank"  
Industrial Arts
- 6. Lorraine Sheppard  
"Shep"  
College Preparatory
- 7. Thomas R. Shump  
"Tom"  
Commercial



Richard Earl Spurlock  
"Dick"  
Industrial Arts



Thomas Edward Spurlock  
"Tom"  
Industrial Arts



Mary Ermajeane Stegall  
"Erma"  
Commercial



Paul Bernard Meyers  
"Toots"  
Industrial Arts



Mary Magdlene Montgomery  
"Maggie"  
Commercial



Roma Lovella Mullen  
"Rome"  
College Preparatory



Ruth Ann Murta  
"Ruthie"  
Commercial



Edward Lee O'Dell  
"Wing"  
Industrial Arts



Janet Ann Parker  
"Jan"  
Home Economics



Jean Ann Payne  
"Jeannie"  
Commercial



Lillie Virginia Pendleton  
"Jenny"  
Commercial



Lois Jean Porter  
"Punkin"  
Home Economics

NOEL BRIDWELL



- 1. Etta Louise Rayburn  
"Lulu"  
College Preparatory
- 2. Mary Elizabeth Renn  
"Liz"  
Home Economics
- 3. Anna Jean Ridgeway  
"Rusty"  
Commercial



- 4. Thelma Ruth Sartin  
"Doc"  
Commercial



- 5. Franklin Dee Schackart  
"Hank"  
Industrial Arts
- 6. Lorraine Sheppard  
"Shep"  
College Preparatory
- 7. Thomas R. Shump  
"Tom"  
Commercial



Richard Earl Spurlock  
"Dick"  
Industrial Arts



Thomas Edward Spurlock  
"Tom"  
Industrial Arts



Mary Ermajean Stegall  
"Erma"  
Commercial



1. Franklin Leslie Stockham  
"Jack"  
Industrial Arts

2. Lena Mae Sutton  
"Beana"  
Commercial

3. Alice Louise Taylor  
"Tooter"  
Commercial

4. Mary Elizabeth Wear  
"Lib"  
Commercial

5. Julia Anne Wedebrook  
"Jody"  
Home Economics

6. Donald Ray Welch  
"Don"  
College Preparatory

7. Blanche Marlene Williams  
"Blanche"  
College Preparatory



Naomi Williams  
"Nomie"  
Commercial



Erma Jean Wiseman  
"Windy"  
Home Economics



Phyllis Jean Yeager  
"P. J."  
Home Economics



# Senior Activities

## BAILEY, HOMER RICHARD, JR.

Agriculture Club, 4; Football, 1, 2, 3, 4; Freshman Basketball, 1, 2; Industrial Arts Club, 2; Intramural Basketball, 1, 2.

## BAILEY, KENNETH EDWARD

Agriculture Club, 4; Hi-Y Club, 4; Industrial Arts Club, 2; Mathematics Club, 2; Radio, 3; Scholarship, 2.

## BIGGS, DALE NOLEN

Agriculture Club, 4; Industrial Arts Club, 1, 2.

## BLEVINS, HAROLD

Agriculture Club, 4; Basketball, 3, 4; Class Officer, 1; Football, 2; Hi-Y Club, 2.

## BOWER, DOLCIA ANN

"Daffy Dills", 3; English Club, 1, 2, 3, 4; Home Economics Club, 2, 3, 4; Librarian, 2, 3, 4; Mixed Chorus, 3.

## BOYD, MARY CATHERINE

Chemistry Club, 4; "Daffy Dills", 3; English Club, 3, 4; Future Homemakers Club, 3; Girls' Glee Club, 2, 3; Librarian, 4; May Festival, 2; Mixed Chorus, 4; Scholarship, 4; Senior Survey, 4.

## BRICKER, CHARLES W., JR.

Agriculture Club, 4; Hi-Y Club, 1; Industrial Arts Club, 1, 2.

## BROWN, ROBERT CLINTON

Chemistry Club, 4; Class Officer, 1, 2; "Daffy Dills", 3; English Club, 1, 2, 3, 4; Football, 1, 2, 3, 4; Latin Club, 1, 2, 3; Mathematics Club, 2, 3; National Honor Society, 3, 4; Reserve Basketball, 1, 2; Scholarship, 1, 2, 3, 4.

## CAUDILL, DONALD LEE

English Club, 1, 2, 3; Latin Club, 3; Spanish Club, 4.

## COCHRAN, LESLIE BOYD, JR.

English Club, 1, 2, 3, 4; National Honor Society, 3, 4; Mathematics Club, 2, 4; Scholarship, 2.

## CONLEY, BILLIE ESTELLE

Chemistry Club, 4; "Daffy Dills", 3; English Club, 1, 2, 3, 4; Girls' Glee Club, 1, 2; Latin Club, 1, 2, 3; Librarian, 4; Mixed Chorus, 3, 4; National Honor Society, 3, 4; Scholarship, 1, 2, 3, 4; Senior Survey, 4.

## CONLEY, MARY ETHEL

English Club, 1, 2, 3, 4; Home Economics Club, 2; Librarian, 4; National Honor Society, 3, 4; Newspaper, 4; Scholarship, 1, 2, 3.

## CONLEY, PAUL DOUGLAS

Agriculture Club, 4; Baseball, 2; Basketball, 1; Class Officer, 2, 3, 4; Hi-Y Club, 2; Industrial Arts Club, 1, 2.

## COOPER, PATSY ELAINE

Athletics Club, 3; Glee Club, 3, 4; Majorette, 2, 3, 4; Mixed Chorus, 3, 4.

## DAVIS, AGNES MARIE

English Club, 1, 2, 3, 4; Home Economics Club, 1.

## DENNING, ETHEL LOUISE

Annual Staff, 3, 4; Chemistry Club, 4; "Daffy Dills", 3; English Club, 1, 2, 3, 4; Latin Club, 1, 2, 3; Mathematics Club, 2; Mixed Chorus, 4.

## ELROD, CHARLES

Baseball Manager, 2; Basketball, 1, 4; Industrial Arts Club, 1, 2; Hi-Y Club, 1.

## ELROD, KENNETH RAY

Hi-Y Club, 1; Industrial Arts Club, 1.

## EULETT, IDA MAE

Athletics Club, 2; Class Officer, 2; English Club, 1, 2, 3, 4; Mathematics Club, 2; Newspaper, 4; Scholarship, 2; Spanish Club, 2, 3.

## FLANNERY, VERNON

Agriculture Club, 4; Baseball, 1, 3, 4; Basketball, 1; Class Officer, 4; English Club, 1, 2; Football, 4; Hi-Y Club, 2; Industrial Arts Club, 1, 2; Tumbling Team, 1.

## FLOYD, RONALD FRANKLIN

Annual Staff, 3, 4; Band, 2, 3, 4; Boy's Glee Club, 4; "Daffy Dills", 3; Industrial Arts Club, 1, 2; Mathematics Club, 2; Minstrel, 3; Mixed Chorus, 3, 4; Pep Band, 2, 3, 4; Radio, 3; Spring Festival, 2, 3.

## FRASURE, WALTER

Agriculture Club, 4; Boy's Glee Club, 4; Hi-Y Club, 2; Industrial Arts Club, 1, 2, 3; Mixed Chorus, 4.

## HALL, DONALD LEE

Agriculture Club, 4; Hi-Y Club, 2; Industrial Arts Club, 1, 2.

## HALL, HAROLD EUGENE

Chemistry Club, 4; Industrial Arts Club, 1; Mathematics Club, 2, 3.

## HILL, RUTH PAULINE

Athletics Club, 2; Home Economics Club, 1, 3.

## HIMES, MARY GERALDINE

Athletics Club, 2; English Club, 2, 3; Glee Club, 1, 2; Latin Club, 1; Mixed Chorus, 4.

## HOOVER, FLORA SUE

Annual Staff, 3, 4; Athletics Club, 1, 2; Band, 2, 3, 4; Class Officer, 2; "Daffy Dills", 3; English Club, 2; Glee Club, 1; Home Economics Club, 1; Minstrel, 3.

## HOPKINS, ANTON KEITH

Basketball, 2, 3, 4; "Daffy Dills", 3; Spanish Club, 2.

## HOWARD, BOBBIE JEAN

Home Economics Club, 1, 2.

## HOWARD, ALBERTA

Athletics Club, 3; "Daffy Dills", 3; Home Economics Club, 1, 2; Latin Club, 2; Librarian, 3, 4.

## HUNNEL, ROBERTA JEAN

Band, 1, 2, 3, 4; Home Economics Club, 1; Mixed Chorus, 4.

## JONES, DONNA LEE

English Club, 1, 2; Home Economics Club, 1, 2, 3; Mixed Chorus, 4.

## JORDAN, CARL LESLIE

Industrial Arts Club, 1, 2.

## JOURNEY, BETTY LOU

Athletics Club, 4; Glee Club, 2, 4; Newspaper, 4; Portsmouth High School, 2.

## KEENE, HAROLD EDWARD

Class Officer, 3, 4; "Daffy Dills", 3; English Club, 1, 2, 3, 4; Football, 2, 3, 4; Latin Club, 1, 2, 3; Mathematics Club, 1, 2, 3; Minstrel, 3; Scholarship, 1, 2, 3, 4; Science Club, 3, 4; Senior Survey, 4; Radio, 2.

## KEYSER, DOLORES ANN

Band, 1, 2, 3, 4; Cheerleader, 2, 3, 4; English Club, 2; Home Economics Club, 1, 2, 3; Minstrel, 3; Mixed Chorus, 1; Spring Festival, 1, 3, 4.

# Senior Activities

## KENNARD, ROBERT

Agriculture Club, 4; Basketball, 1; English Club, 4; Football, 1, 2, 3, 4, (Captain 4); Hi-Y Club, 2; Industrial Arts Club, 1; Tumbling Team, 1.

## KITCHEN, JANET MAXINE

Band, 1, 2, 3, 4; Cheerleader, 3, 4; Class Officer, 1; English Club, 1, 2, 3, 4; Minstrel, 3; Spanish Club, 2, 3.

## KNAUFF, BARBARA GAYLE

English Club, 2, 4; Newspaper Staff, 4; Spanish Club, 2, 3.

## LAKIN, LOIS CAROL

Athletics Club, 2; "Daffy Dills", 3; English Club, 2, 3, 4; Latin Club, 2, 3; Mathematics Club, 2, 3; Portsmouth High School, 1; Scholarship, 2, 3; Senior Survey, 4.

## McCANN, BERTIE LOU

English Club, 1; Glee Club, 3; Home Economics Club, 2, 3, 4.

## McGOVNEY, GLENNA RUTH

"Daffy Dills", 3; Drum Major, 2, 3, 4; English Club, 2, 3, 4; Home Economics Club, 1; Minstrel, 3.

## McGRAW, JACQUELINE BIBBEY

English Club, 1, 2, 3; National Honor Society, 3, 4; Newspaper Staff, 4; Scholarship, 2; Spanish Club, 2.

## MARTIN, NORMA CLAIRE

English Club, 2; Girls' Glee Club, 2; Newspaper Staff, 4.

## MEFFORD, HAROLD

Agriculture Club, 4; Baseball, 2, 3, 4; Basketball, 1, 2, 3, 4; Mathematics Club, 2.

## MEYERS, PAUL BERNARD

Agriculture Club, 4; Basketball, 4; English Club, 1, 2; Football Manager, 1, 2, 3, 4.

## MONTGOMERY, MARY MAGDLENE

Athletics Club, 2, 3; Home Economics Club, 1, 2.

## MULLEN, ROMA LOVELLA

Annual Staff, 4; "Daffy Dills", 3; English Club, 1, 2, 3, 4; Girls' Glee Club, 1; Latin Club, 1, 2; Mathematics Club, 2; Mixed Chorus, 4; Scholarship, 2; Senior Survey, 4; Spanish Club, 3; Spring Festival, 1.

## MURTA, RUTH ANN

English Club, 4; Girls' Glee Club, 1, 3, 4; Mixed Chorus, 2.

## O'DELL, LEE EDWARD

Chemistry Club, 4; English Club, 1, 2, 3; Industrial Arts Club, 1, 2; Scholarship, 3.

## PARKER, JANET ANN

Home Economics Club, 2, 4.

## PAYNE, JEAN ANN

Annual Staff, 3, 4; Athletics Club, 2; "Daffy Dills", 3; English Club, 1; Majorette, 2, 3, 4; Minstrel, 3; Mixed Chorus, 3; Spring Festival, 3.

## PENDLETON, LILLIE VIRGINIA

Annual Staff, 4; Athletics Club, 2; Class Officer, 3; "Daffy Dills", 3; Home Economics Club, 4; Mathematics Club, 2; Mixed Chorus, 3.

## PORTER, LOIS JEAN

Home Economics Club, 1, 2, 3.

## RAYBURN, ETTA LOUISE

Annual Staff, 3; Athletics Club, 2; "Daffy Dills", 3; English Club, 1, 2, 3, 4; Latin Club, 1, 2, 3; Mathematics Club, 2; Mixed Chorus, 1, 2, 3, 4.

## RENN, MARY ELIZABETH

English Club, 2, 3, 4; Home Economics Club, 2, 3, 4.

## RIDGEWAY, ANNA JEAN

"Daffy Dills", 3; English Club, 1, 2, 3, 4; Future Homemaker's Club, 1, 2, 3; Newspaper Staff, 4; Queen's Court, 2, 4; Scholarship, 1, 2.

## SARTIN, THELMA RUTH

English Club, 2, 3, 4; Girls' Glee Club, 2, 3; Mathematics Club, 2.

## SCHACKART, FRANK

Agriculture Club, 4; Hi-Y Club, 2; Radio, 3; Tumbling Team, 1.

## SHEPPARD, LORRAINE

"Daffy Dills", 3; English Club, 1, 2, 3, 4; Latin Club, 1, 2, 3; Librarian, 4; Majorette, 2, 3, 4; Minstrel, 3; Scholarship, 1, 2, 3.

## SHUMP, THOMAS R.

Agriculture Club, 4; English Club, 1; Hi-Y Club, 1; Radio, 2; Scholarship, 1.

## SPURLOCK, RICHARD EARL

Basketball, 1, 2, 3, 4; "Daffy Dills", 3; Football, 1, 2, 4; Industrial Arts, 1, 2; Minstrel, 3; Newspaper, 4; Scholarship, 3.

## SPURLOCK, THOMAS EDWARD

Basketball, 2, 3, 4; Class Officer, 2, 3, 4; Football, 1, 2, 3, 4; Hi-Y Club, 2; Industrial Arts Club, 1, 2.

## STEGALL, MARY ERMA JEAN

English Club, 2, 3, 4; Girls' Glee Club, 3; Librarian, 3.

## STOCKHAM, FRANKLIN LESLIE

Baseball, 1, 2, 3, 4; Basketball, 1, 2, 3, 4; Football, 1, 2, 3, 4; Industrial Arts Club, 1, 2.

## SUTTON, LENA MAE

Athletics Club, 1, 2; English Club, 1; Girls' Glee Club, 3; Mixed Chorus, 2.

## TAYLOR, ALICE LOUISE

Athletics Club, 2; Home Economics Club, 4.

## WEAR, MARY ELIZABETH

Athletics Club, 1; Home Economics Club, 1.

## WEDEBROOK, JULIA ANN

Athletic Club, 1, 2; English Club, 1, 2; Girls' Glee Club, 1, 2; Home Economics Club, 1, 2; Mixed Chorus, 4; "Take Your Medicine", 3.

## WELCH, DONALD RAY

Band, 1, 2, 3, 4; "Daffy Dills", 3; English Club, 2, 4; Industrial Arts Club, 1, 2; Mathematics Club, 2; Minstrel, 3; Pep Band, 2, 3, 4; Scholarship, 1, 2, 3, 4; Senior Survey, 4; Spanish Club, 2; Spring Festival, 1, 2, 3, 4.

## WILLIAMS, BLANCHE MARLENE

English Club, 1, 2, 3, 4; Latin Club, 1, 2, 3; Librarian, 4; Spring Festival, 1, 2.

## WILLIAMS, NAOMI

Annual Staff, 4; Band, 1, 2, 3, 4; Cheerleader, 1, 2, 3, 4; Class Officer, 1; "Daffy Dills", 3; English Club, 1, 2, 3, 4; Football Queen, 4; National Honor Society, 3, 4; Minstrel, 3; Spanish Club, 2, 3; Spring Festival, 1, 3; Queen's Court, 3.

## WISEMAN, ERMA JEAN

Athletics Club, 2; Band, 1, 2, 3, 4; "Daffy Dills", 3; Home Economics Club, 3, 4; Mathematics Club, 2; Minstrel, 3.

## YEAGER, PHYLLIS JEAN

Athletics Club, 2, 3, 4; Band, 1, 2, 3, 4; "Daffy Dills", 3; Future Homemakers Club, 4; Minstrel, 3.



1. Walter Frasure and Mary Renn. 2. Erma Wiseman. 3. Robert McCann, now in the Armed Service. 4. Alberta Howard and Jean Howard. 5. Dolcia Bower. 6. Glenna McGovney and Don Hall. 7. Carl Jordan. 8. Lena Sutton and Norma Martin. 9. Naomi Williams. 10. Jean Payne. 11. Harold Keene, Tom Spurlock, Paul Conley. 12. Patsy Cooper. 13. Mary Stegall. 14. Sue Hoover.



# *Underclassmen*



A winter scene in  
Roosevelt Game Preserve.



## *Junior Officers*

*Left To Right:* Paul Whaley, President; Jewl Wright, Vice-President;  
Donna Davis, Secretary; Patti Flannery, Treasurer.

IDEAL MILK COMPANY

Phone 2-3951



**JUNIORS**

TOP ROW, Left to Right: C. Anderson, J. Andrews, G. Biggs, C. Brooks, R. Caudill, D. Conley.  
 ROW TWO: R. Cooper, R. Cox, J. Daulton, D. Davis, B. Davis, P. Denning. ROW THREE: J.  
 Dunaway, V. Dyer, A. Easter, B. Elrod, R. Entler, S. Erlenwein. ROW FOUR: C. Eulert, C.  
 Fields, P. Flannery, R. Frailey, G. Frasher, M. Graham. ROW FIVE: E. Gulick, J. Gyer, D. Gyor,  
 J. Hazelbaker, J. Hicks, D. Horsley. ROW SIX: W. Howard, J. Jackson, M. Jarrells, J. Kessinger,  
 S. Kirker, J. Knauff. ROW SEVEN: K. Kuhn, B. Leedy, B. Lewis, J. Litteral, J. Love, B. Lyons.



**JUNIORS**

TOP ROW, Left to Right: J. McKee, A. Mann, D. Mann, M. May, M. Meade, N. Morrow. ROW TWO: R. Merritt, A. Mershon, C. Milison, A. Montgomery, R. Murta, P. Perry. ROW THREE: L. Priest, R. Quickle, R. Ratliff, J. Rhea, J. Richardson, W. Risner. ROW FOUR: B. Rose, R. Roth, L. Royal, L. Royce, B. Sanford, C. Shaffer. ROW FIVE: V. Shaw, C. Sheets, F. Shepherd, C. Shively, B. Shupert, J. Smith. ROW SIX: V. Smith, R. Staten, P. Swearingen, A. Swords, J. Thomas, B. Tieman. ROW SEVEN: W. Thurman, B. Vaughters, B. Wedebrook, P. Whaley, D. Williams, Jewl Wright, June Wright. (Any Junior not pictured, did not have a picture taken.)



## ***Sophomore Officers***

*Seated Front:* Charles Conley, Vice-President; *Rear:* Jerry Bower, Secretary; *Standing Front:* Jim Ruark, President; *Rear:* Richard Mowery, Treasurer.

Phone 3-2831

Dry Cleaning

U. S. LAUNDRY

822-826 Fourth Street, Portsmouth, Ohio





**SOPHOMORES**

TOP ROW, Left to Right: J. Adams, P. Andre, Patty Arnett, Paul Arnett, R. Bean, B. Benson. ROW TWO: A. Bloomfield, N. Bond, B. Book, R. Bower, J. Bower, L. Bower. ROW THREE: P. Brickey, J. Brown, J. Callihan, J. Carroll, C. Conley, J. Conley. ROW FOUR: F. Cooper, K. Cooper, R. Damron, S. Dillow, Sally Elliott, Sandra Elliott. ROW FIVE: R. Elrod, G. Fields, B. Fife, F. Frump, S. Gilkerson, B. Gilmore. ROW SIX: D. Graham, P. Hall, R. Hazelbaker, Karol Hamer, Kenneth Hamer, W. Hodge.

**CLYDE BEATTY**

"The World's Greatest Wild Animal Trainer"



**SOPHOMORES**

TOP ROW, Left to Right: G. Holbrook, J. Hopkins, M. Howard, J. Howell, B. Huff, T. Jones.  
 ROW TWO: S. Jordan, E. Kennard, C. Kincaid, J. King, S. Kitchen, K. Knauff. ROW THREE:  
 G. Kuhn, A. Lackey, G. Lakin, S. Lauder, C. Leedy, D. Litz. ROW FOUR: B. Logan, B. Lucas,  
 B. McCall, R. McCall, S. McCall, M. McCowen. ROW FIVE: Mary McNeil, Marie McNeil, D.  
 Malone, D. Manning, D. Mathews, L. Meade. ROW SIX: B. Moore, R. Mowery, P. Mullen,  
 B. Murphy, Bill Nelson, Bob Nelson.

**MARTING'S**

"One of Ohio's Good Stores"



**SOPHOMORES**

TOP ROW, Left to Right: S. Nichols, M. Ober, Ronnie Payne, Tommy Payne, G. Pennington, N. Peters. ROW TWO: D. Pollard, J. Price, B. Pruitt, T. Reiser, C. Reynolds, D. Rhoden. ROW THREE: O. Ridgeway, P. Riley, D. Roberts, J. Ruark, D. Schackart. ROW FOUR: G. Scott, B. Shaffer, F. Shaw, J. Smalley, D. Smith, G. Smith. ROW FIVE: M. Smith, N. Smith, P. Smith, V. Smith, C. Swords, J. Sowards. ROW SIX: B. Sparks, P. Sparks, D. Stillwell, C. Stout, R. Swearingen. ROW SEVEN: D. Tieman, L. Thomas, H. Walker, F. Wilburn, R. Williams, B. Wolery.



## ***Freshmen Officers***

*Left To Right:* Tommy Tipton, Secretary; Patsy Perry, President;  
Paul Farley, Vice-President; Janet Graham, Treasurer.

KOPY KAT

ZOELLNER JEWELRY COMPANY



**FRESHMEN**

TOP ROW, Left to Right: S. Adkins, J. Arnett, B. Barber, D. Bellamy, J. Biggs, J. Bishop, R. Bradley. ROW TWO: J. Branson, B. Boyd, K. Brooks, D. Byrd, S. Callihan, W. Carpenter, L. Caudill. ROW THREE: I. Coburn, G. Conley, T. Cooper, E. Craiger, E. Cumming, R. Denning. ROW FOUR: C. Dixon, S. Dingus, F. Elliott, W. Entler, N. Evans, P. Farley. ROW FIVE: J. Ferguson, J. Frazier, G. Gifford, J. Gilkerson, J. Graham, E. Gray. ROW SIX: W. Gregory, J. Gulick, G. Hall, L. Hazlebaker, D. Hillard, K. Hodge. ROW SEVEN: D. Hoover, W. Hopkins, A. Howard, G. Howard, S. Howard, J. Howe.



**FRESHMEN**

TOP ROW, Left to Right: R. Howell, H. Hudson, J. Ingles, D. Ishmael, W. Jarrels, W. Jayne, B. Jennings. ROW TWO: A. Jordan, F. Jordan, R. Jordan, J. Jones, S. Jones, D. Kitchen. ROW THREE: E. Lackey, A. Lancaster, R. Lewis, C. Liston, F. Litteral, T. Litz. ROW FOUR: R. Lowe, B. Lucas, D. McCown, S. McGlone, P. McGlothlin, V. McGraw. ROW FIVE: R. McNeil, D. McNutt, B. Mangus, M. Medley, S. Meeker, W. Messer. ROW SIX: P. Meyers, P. Morgan, A. Murphy, C. Murphy, J. Neeley, S. Nelson. ROW SEVEN: J. Nibert, J. Nolder, G. Ober, L. O'Dell, P. Osborne, G. Perry, P. Perry.



**FRESHMEN**

TOP ROW, Left to Right: R. Pick, R. Phillips, R. Pollard, C. Priode, W. Ratliff, N. Royal, L. Renn. ROW TWO: J. Richardson, D. Riffe, W. Riffe, P. Roberts, P. Ruark, L. Scheid. ROW THREE: T. Scott, G. Shaw, J. Shaw, I. Shepherd, B. Sheppard, R. Shinkle. ROW FOUR: F. Shorr-ridge, J. Shupert, H. Simpson, J. Sissle, J. Skaggs, C. Smith. ROW FIVE: A. Smith, L. Smith, B. Steele, B. Stegall, N. Stillwell, F. Taylor, B. Thomas. ROW SIX: P. Thomson, L. Thompson, T. Tipton, J. Titus, J. Walker, J. Ward, S. Warren. ROW SEVEN: J. Watson, D. Wear, M. Weaver, R. Whaley, T. Wilson, G. Williams, V. Wight.



## ***Eighth Grade Officers***

*First Step: Joseph Meade, Vice-President; Second Step: Gary Knauff, Treasurer; Third Step: Dolores O'Dell, President; Fourth Step: Shirley Jordan, Secretary.*

CAMEO RESTAURANT

"Open twenty-four hours"

GULICK'S PLUMBING SHOP





## EIGHTH GRADE

TOP ROW: L. Adams, R. Adkins, A. Abrams, J. Basford, J. Bibbey. ROW TWO: W. Birchfield, A. Bradford, S. Bridwell, L. Brown, R. Browning. ROW THREE: C. Burtrum, M. Burtrum, J. Calwell, N. Calloway, I. Coleman, G. Cook. ROW FOUR: H. Conley, C. Crowder, R. Crowe, L. Fairchild, W. Fife. ROW FIVE: T. Frazier, H. Gardner, R. Gilkerson, P. Goodman, B. Gray. ROW SIX: H. Greene, D. Hall, N. Hall, W. Hall, L. Hamilton.

R. P. BOWER

Welding Service

Compliments Of  
E. J. KENRICK



**EIGHTH GRADE**

*TOP ROW:* R. Hobbs, G. Howard, J. Howard, V. Howard, L. Hunt. *ROW TWO:* W. Hurst, S. Ingles, V. Ingles, C. Jayne, E. Jewell. *ROW THREE:* E. Johnson, W. Johnson, L. Jones, S. Jordan, R. Journey, G. Kitchen. *ROW FOUR:* H. Klever, G. Knauff, J. Lauder, B. Liston, J. Lewis. *ROW FIVE:* D. Logan, E. Madden, F. Manning, H. McCann, B. Meade. *ROW SIX:* J. Meade, P. Melvin, J. Mershon, B. Monk, E. Morrison.

**S. S. KRESGE & COMPANY**

**ROY ZUEFFLE**

**Jeweler**



**EIGHTH GRADE**

*TOP ROW:* R. Murta, F. Meyers, D. O'Dell, W. Partlow, P. Pollard. *ROW TWO:* R. Puckett, P. Redoutey, D. Reynolds, M. Rice, D. Rideout. *ROW THREE:* P. Rideout, T. Riggs, G. Royce, J. Royce, A. Scheid, N. Sheppard. *ROW FOUR:* D. Sheppard, R. Shephard, E. Shiveley, S. Shivener, C. Smith. *ROW FIVE:* E. Smith, J. Sowards, D. Stevens, R. Vanderpool, D. Varney. *ROW SIX:* J. Ward, R. Watson, M. Wessell, J. Whitman, B. Young.

**WEST PORTSMOUTH BLOCK COMPANY**

**McCARTY'S GROCERY**

Second Street

West Portsmouth



LEFT PICTURE, Upper Row: N. Peters, B. Pruitt, G. Lakin, K. Hamer, S. Gilkerson. Seated: D. Tieman, M. McCowen. CENTER PICTURE: Thelma Sartin, S. Kirker, Seated: R. Hazelbaker. RIGHT PICTURE: R. Merritt

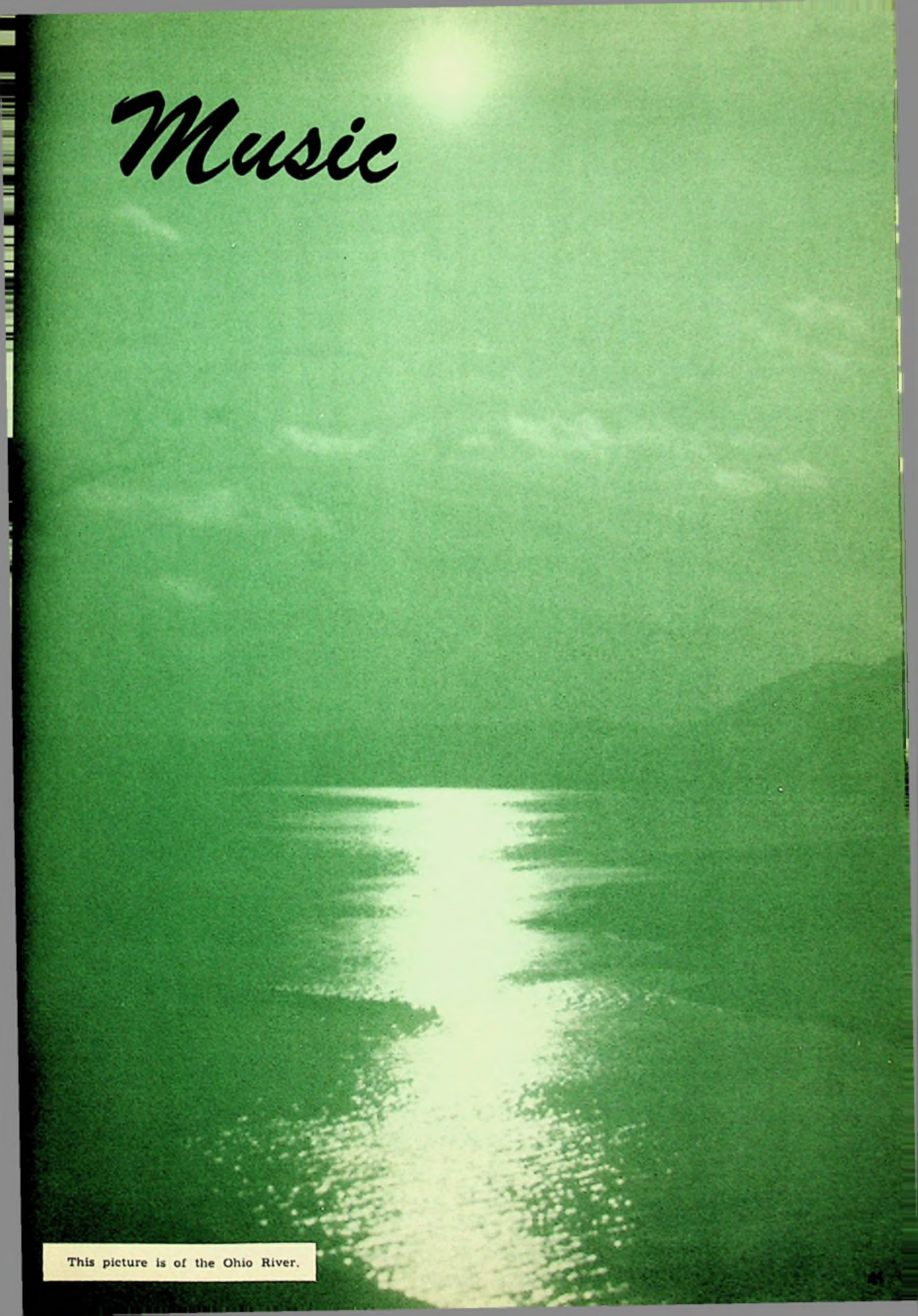


LEFT: C. Brooks. CENTER: S. Callihan. RIGHT: D. Williams, B. Rose.



LEFT: D. Tieman, H. Mefford. CENTER: R. Hill, P. Yeager. RIGHT: Mr. Rolf and Mrs. Donley shown sponsoring a trip to Washington.

# Music



This picture is of the Ohio River.



*Left To Right, Row One: S. Elliott, L. Thomas, J. McKee, J. Nibert, D. Gyor, C. Milison, J. Brown. Row Two: R. Caudill, B. Davis, J. King, J. Jones, D. Byrd, J. Biggs, B. Tieman, R. Cox, S. Hoover, R. Floyd. Row Three, Seated: S. Gilkerson, A. Bloomfield. Standing: B. Worley, V. Worstell, J. Carroll, J. Wright, R. Shinkle, R. Phillips, D. Keyser, N. Williams. Majorettes: L. Sheppard, M. Jarrells, P. Cooper, G. Scott, and Drum Majorette, G. McGovney.*

**"ALWAYS A WASHINGTON BOOSTER"**



*Left To Right, Row One: M. McCowen, N. Peters, E. Wiseman, J. Kitchen, J. Ingles, J. Daulton, S. Elliott. Row Two: C. Conley, B. Gilmore, S. Kitchen, O. Ridgeway, D. Hoover, A. Jordan, D. Davis, P. Yeager. Row Three: D. Graham, J. Rhea, D. McCowen, J. Smalley, J. Walker, P. Andre, G. Frasher. R. Hurst, D. Welch. Standing: B. Sanford, P. Smith, S. Jordan, J. Payne.*

MORGAN BROTHERS JEWELERS  
 DIAMONDS WATCHES

734 Fifth Street



1. Mr. Gillette, Band Director.
2. Drum section with J. Wright, and R. Shinkle in foreground.
3. G. McGovney, Drum Major-ette.
4. R. Floyd .
5. R. Hurst.
6. Band on Parade.
7. Clarinet Section with J. Daulton, J. Ingles, J. Kitchen and E. Wiseman, N. Peters in front.







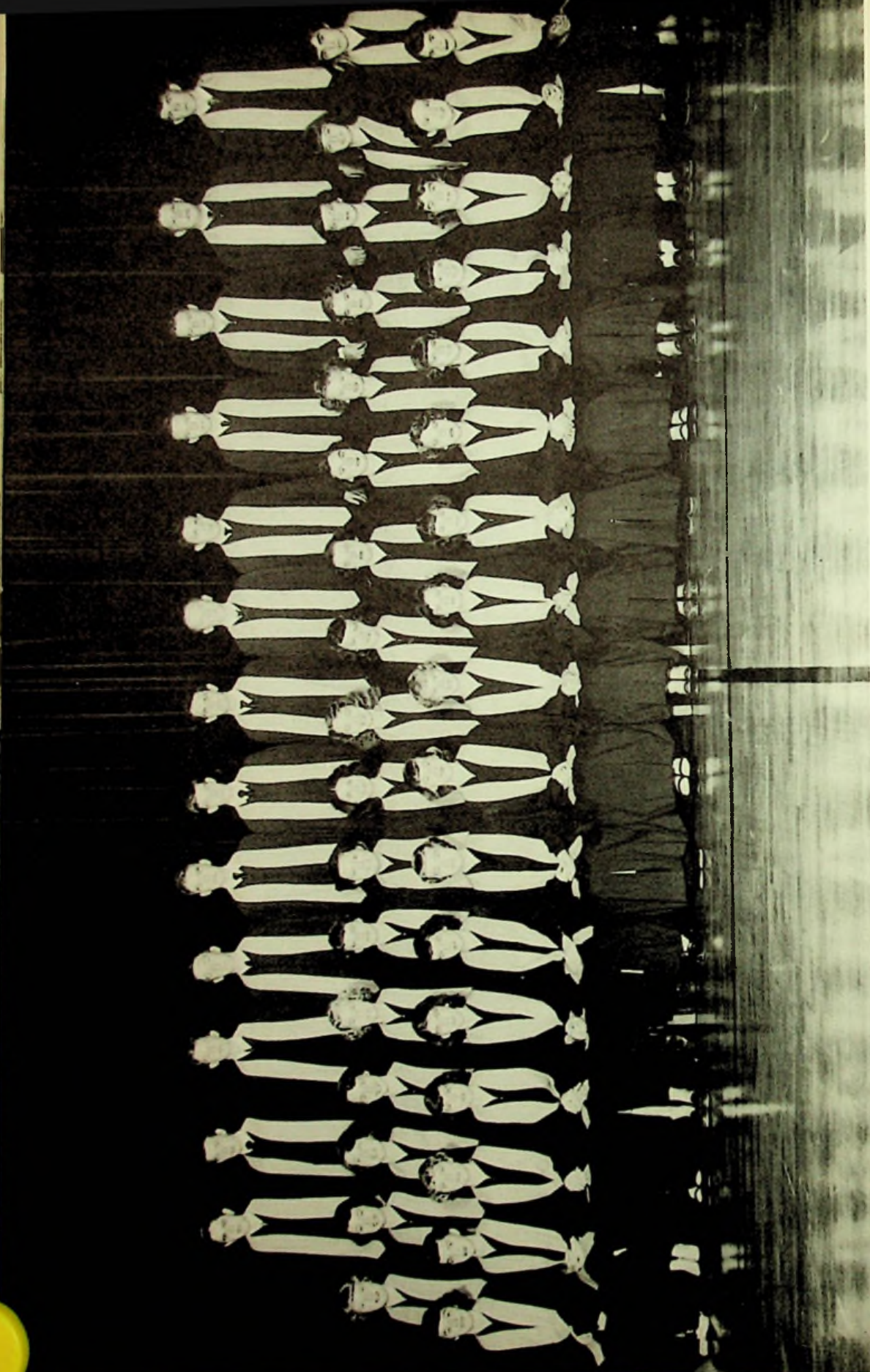
**MAJORETTES**, *Left to Right*: Lorraine Sheppard, Shirley Jordan, Phyllis Smith, Betty Sanford, Gayle Scott, Marjorie Jarrells, Patsy Cooper, Jean Ann Payne. *Front Row*: Glenna McGovney.



**PEP BAND**, *Left to Right*: John Rhea, Ronald Floyd, Richard Hurst and Don Welch. *Back Row*: Don Graham, Russell Cox and Charles Conley.

**HERRMANN'S**  
Quality Meats

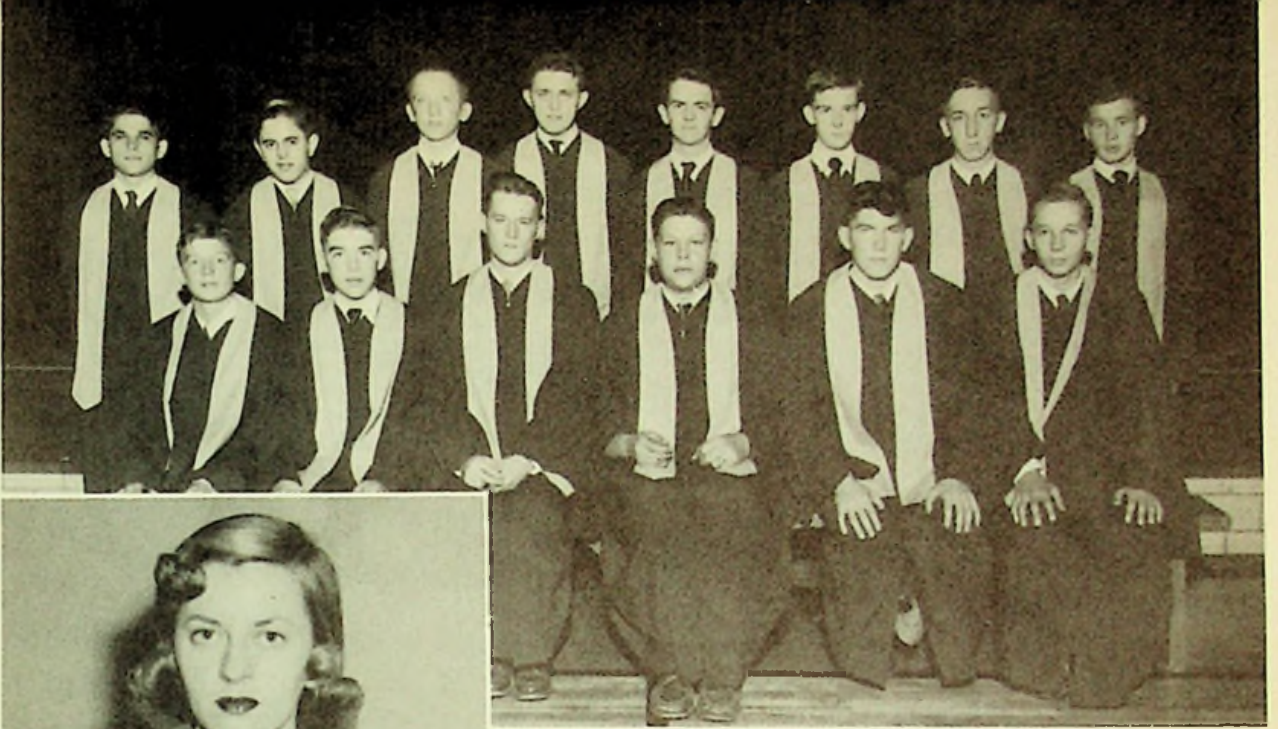
221 Market St. — 913 Gallia St. — 1739 8th St. — 2640 Gallia St.



**MIXED CHORUS**

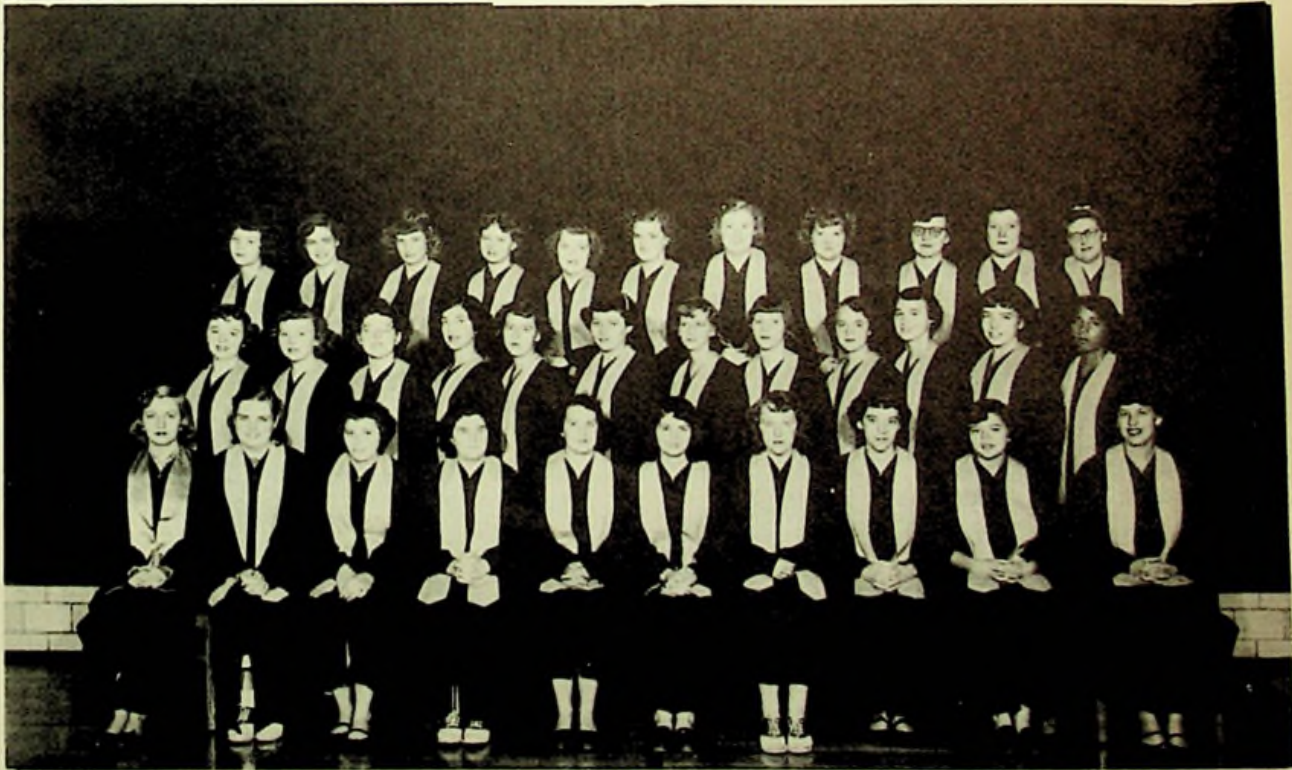
*First Row, Left to Right:* G. Conley, S. Jordan, D. Jones, P. Cooper, P. McGlothlin, B. Rose, L. Porter, B. Conley, J. Hunnel, G. Perry, B. Sheppherd, R. Bradley, S. Lauder, L. Meade, J. Graham, B. Journey, W. Howard. *Second Row:* P. Swearingen, L. Rayburn, M. Himes, P. Smith, P. Perry, J. Howell, S. Warren, L. Denning, R. Mullen, D. Williams, R. Quickel, J. Wedebrook, A. Jordan, D. Davis, J. Hazelbaker, D. Rhoden, J. Litteral. *Third Row:* J. Dunaway, H. Hudson, J. Richardson, D. Graham, K. Cooper, R. Cox, S. Erlenwein, R. Jordan, B. Davis, R. Hurst, R. Floyd, D. Smith, W. Frasure.

**CRICHTON OFFICE SUPPLY  
SCHOOL SUPPLIES**



### Boys Glee Club

*First Row, Left to Right: J. Richardson, K. Cooper, R. Floyd, D. Smith, W. Frasure, R. Hurst. Second Row: L. Royce, J. Dunaway, R. Jordan, B. Davis, S. Erlenwein, R. Cox, D. Graham, H. Hudson. Inset: Miss Blair, Vocal Director.*



### Girls Glee Club

*First Row, Left to Right: Miss Blair, W. Entler, C. Schaffer, P. Morgan, I. Coburn, E. Craiger, B. Jennings, B. Barber, T. Cooper, R. Frailey. Second Row: N. Peters, J. Givens, L. Thomas, H. Walker, P. Roark, R. Murta, B. Pruitt, G. Lakin, J. Callihan, B. McCall, S. Nelson, J. Wright. Third Row: J. Love, N. Morrow, J. Brown, M. McCowen, D. Kitchen, J. Daulton, M. Meade, L. Caudill, W. Risner, P. Andre, S. Kirker.*

ADAMS BAKING COMPANY

PAN DANDY BREAD

## Washington Beats McKell, 47 To 13, In Opener.

Tom Spurlock scored three touchdowns to lead the Washington High Senators to an easy 47 to 13 victory over McKell in the opening game for the Senators on the West Portsmouth field.

Three other Senator players shared the scoring honors with Spurlock. Dick Mowery scored two touchdowns in the route. Frank Shepherd and Jack Stockham each had one TD in the open-

## Senators Come From Behind To Win.

Washington High scored two touchdowns in the final quarter to win a hard fought game from Waverly 20 to 12 on the West Portsmouth field Saturday night.

Trailing 12 to 6 going into the final period, the Senators broke loose to put 14 points on the scoreboard and wrap up the game.

Over 2,000 fans were on hand to watch Washington run its victory streak to four straight and Waverly drop its third straight game of the season.

## Senators Eke Out Win Over Tigers.

Washington High School's ram-paging Senators had their closest call of the season Saturday night as they vanquished a fired-up Glenwood eleven by the smallest of margins—one point after touch-down.

The score was 20 to 19 in a game that provided thrill after thrill for the estimated 4,000 fans who packed themselves around the Washington High gridiron. Both teams looked good as they battled on virtually even terms during the 48 minutes of

## Senators Wallop Central.

Coach Monk Everling's Washington Senators rode roughshod over Central Catholic on the Washington gridiron Friday night, coming off on the big end of a 41 to 7 score.

Tom Spurlock was the big gun for the Senators on offense, running 25, 22 and 16 yards for touchdowns.

Washington pushed across one touchdown in the first quarter, added two more in the second, poured across two in the final period to wrap up its second victory of the year.

## Hicks Scores 2 In 5th Victory.

Washington High School won its fifth straight victory and remained unbeaten by walloping Chesapeake High 40 to 6 here Friday night before 2,000 fans.

The visiting Senators took command of the game early in the first period and completely outplayed the Chesapeake

## Senators Wallops Pirates.

The Washington Senators ran rough-shod over the hapless Wheelersburg Pirates, 58 to 6, before a Homecoming crowd of 3,000 fans on the West Portsmouth field Friday night to run their victory streak to six straight games.

The Senators, during out- powerful

## Unbeaten Senators Takes S. O. C. Crown

The powerful Washington High Senators won the Southeastern Ohio Conference grid crown Friday night by their 20 to 0 victory over the East High Tartans at Allard Park.

Only a few brave football fans sat out in a driving snow storm to see the unbeaten Senators wind up conference play in a blaze of glory. It was the eighth straight win for Washington High for the '51 season and the first over a peri-

## Senators Finish Season Undefeated

The powerful Washington High Senators ran wild in the second quarter to score four touchdowns and then hung on to the lead to wallop the previously undefeated South Point High eleven, 25 to 6, on the West Portsmouth field Friday night.

It was a tremendous victory for Coach Monk Everling's team, which won its ninth season tilt and ran its two-year winning streak to 15 games.

The game climaxed to a Sena-

## West Siders Tally 55 To 6 Victory.

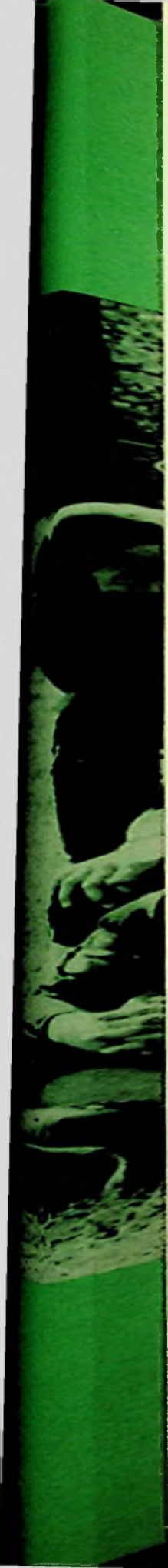
The powerful Washington Senators shut the gates of mercy and pummeled an outclassed Coal Grove eleven, 55 to 6, at Coal Grove.

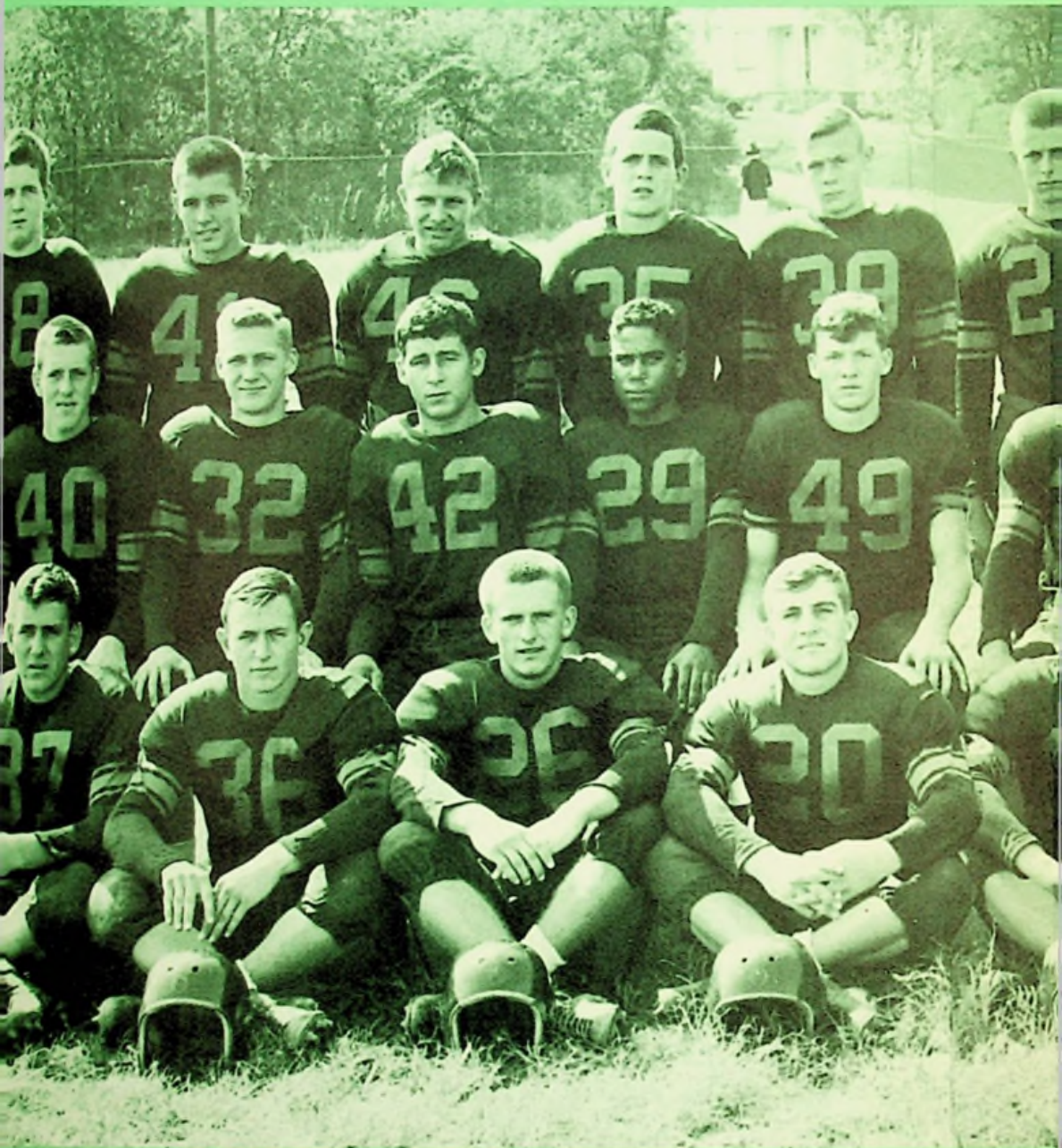
It was the third straight win for Coach Monk Everling's boys, indicating they now are after only a complete history in football.

The whole took part up the so long run the eight tallied.



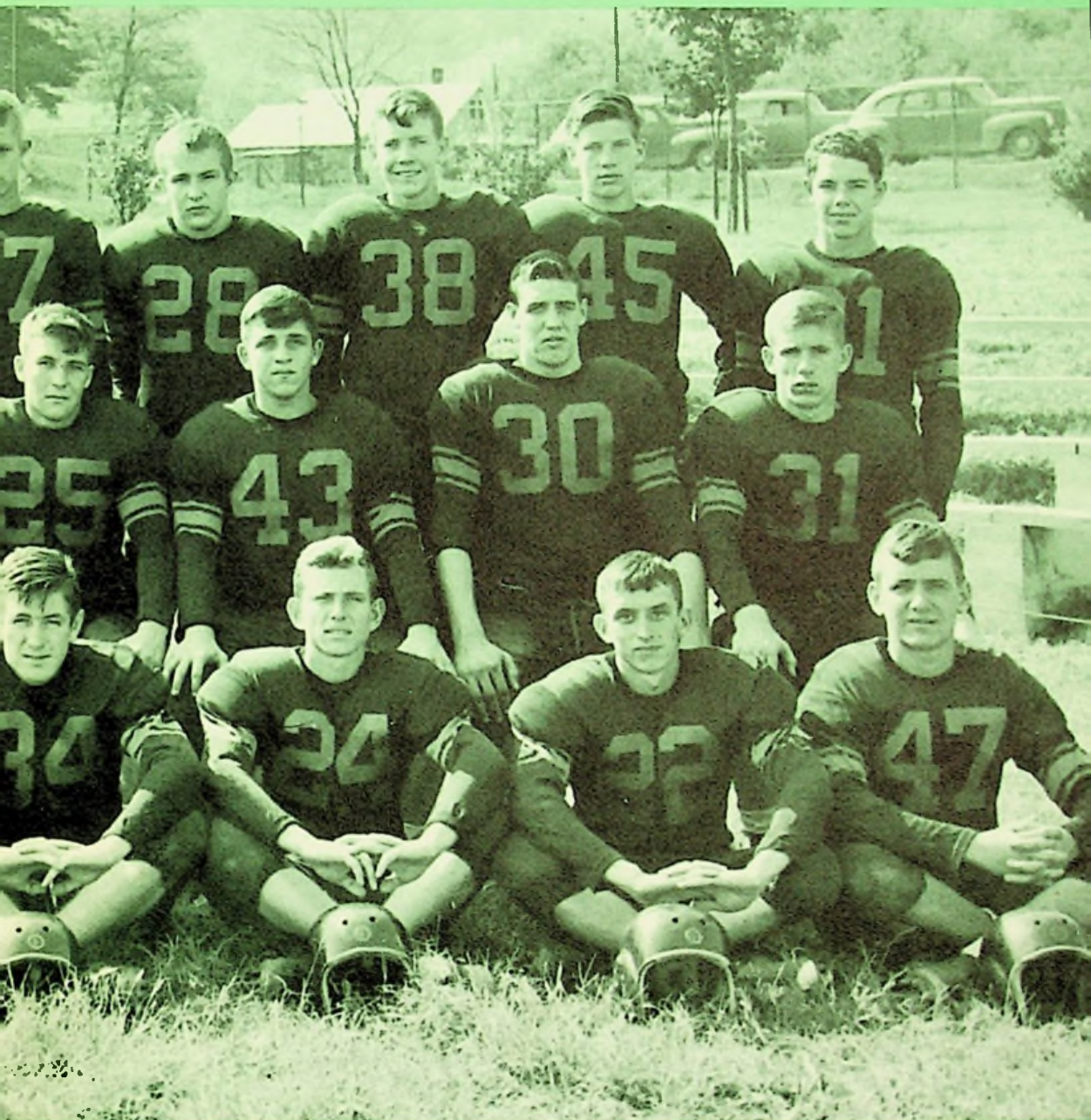
# Sports





## FOOTBALL

*ROW ONE, Left to Right:* Ronnie Payne, Tom Spurlock, Richard Spurlock, Vernon Flannery, Tommy Payne, James Ruark, Jewl Wright, Homer Bailey, Robert Ken Mowery. *BACK ROW:* Karl Kuhn, Kenneth Hamer, 1 Otis Sheppard, Tom Jones, Paul Farley, Gale Biggs, Do



## TEAM

k, Robert Brown, Ernest Kennard, Paul Denn-  
ROW TWO: Jack Stockham, Harold Keene,  
nard, Steve Gilmore, Frank Shepherd, Richard  
Donald Stillwell, Carl Eulett, Richard Entler,  
ald Malone.



COACHES—Mr. Harold Everling, head football coach, had a winning team for the second straight year. He was assisted by Mr. Kenneth Rapp.

*They did  
it again!*

**SOC**

*Champions*

**1951**

TEAM RECORD

Washington	47	McKell	13
Washington	41	C. Catholic	7
Washington	55	C. Grove	6
Washington	20	Waverly	12
Washington	40	Chesapeake	6
Washington	58	Wheelersburg	6
Washington	20	N. Boston	19
Washington	20	Ports. East	0
Washington	26	S. Point	6



The "Hey, You" guys who served as managers were Paul Meyers, Don Smith and Ralph Hill.



## HISTORY OF FOOTBALL

In 1945, Mr. Rolf, Supervising Principal, saw the need of introducing football into Washington High School. After consulting the county Superintendent and the Local School Board, he decided to add it to the sports program. The Board selected Mr. Harold Everling, to head the team, and he has been head football coach since the first season of 1946.

Through the courtesy of Mr. O. Carson Barklow, County Engineer, and his staff, many thousands of dollars of work was done on the field at a very nominal cost to the school and community. In 1948, the school authorities, with the aid of the Senators' Booster Club, went after lights for our field. These were secured, and Washington High School can boast one of the best lighted fields in Southern Ohio.

In 1950, Mr. Rolf started a program to build bleachers on one entire side of the field. These consisted of concrete piers and seats to accommodate a crowd of about 1,000 people. Thus, seats were available for about 1,250 people when using the school's portable

bleachers. Plans are now being made to add two more rows and to make the piers into a solid concrete bleachers.

As to the team record—it speaks for itself. It opened the 1946 season with only 22 men. That year it won one game and lost seven. However, Robert Moriarty won the WPAY award of most valuable player.

In 1947, the school joined the strong S. O. C. League, and against much stronger competition, failed to win a single game. But in 1948 experience began to tell and the team won four, while losing a like number.

The year 1949 brought an even better finish for the Senators, since they won seven games while dropping two, thereby finishing in 2nd place in the S. O. C..

The 1950 season brought the first football glory to Washington as it tied Waverly for the S. O. C. championship.

The climax was reached this past year, 1951, when Washington High School won the S. O. C. League. The Senators were undefeated and untied in nine games.

Compliments Of  
APPLETON'S GROCERY

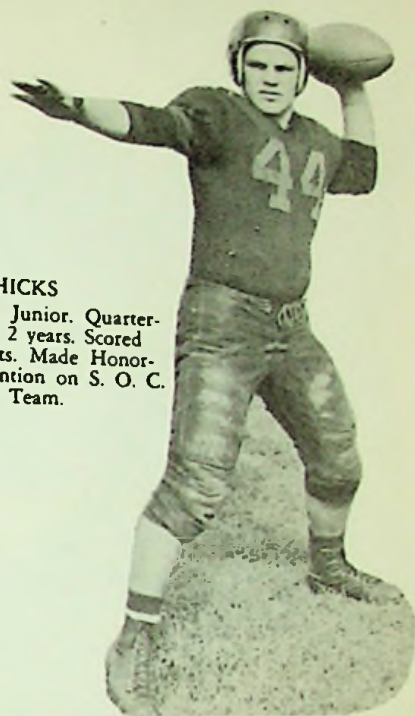
SELBY RETAIL SHOE STORE



**DICK MOWERY**  
 Age 17, Sophomore.  
 Halfback for 2 years. Led  
 scoring with 79 points.  
 Made S. O. C. All Star  
 Team.



**FRANK SHEPHERD**  
 Age 17, Junior. End for  
 3 years. Scored 27 points.  
 He was elected captain of  
 the S. O. C. All Star  
 Team.

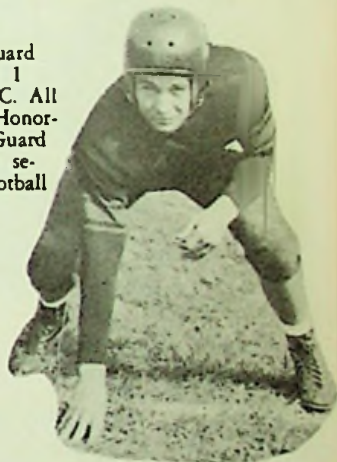


**JACK HICKS**  
 Age 18, Junior. Quarter-  
 back for 2 years. Scored  
 32 points. Made Honor-  
 able Mention on S. O. C.  
 All Star Team.

**JUNIOR BAILEY**  
 Age 18, Senior. Center  
 for 4 years. Made Honor-  
 able Mention on S. O. C.  
 All Star Team. Made  
 Honorable Mention for  
 center on All State Team  
 selected by Ohio Football  
 Coaches.



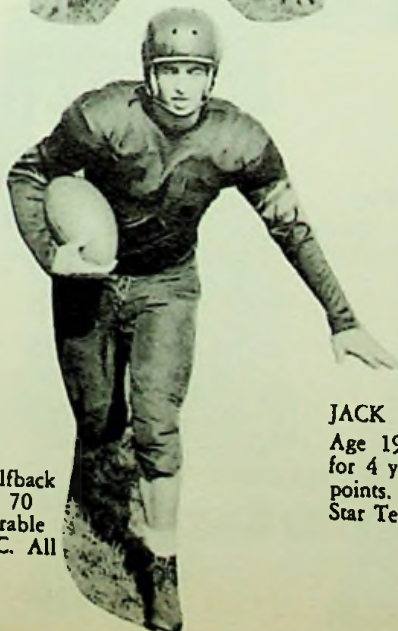
**BOB KENNARD**  
 Age 18, Senior. Guard  
 for 3 years. Scored 1  
 point. Made S. O. C. All  
 Star Team. Made Honor-  
 able Mention for Guard  
 on All State Team sel-  
 ected by Ohio Football  
 Coaches.



**JIM RUARK**  
 Age 18, Sophomore.  
 Tackle for 1 year. Made  
 Honorable Mention on  
 S. O. C. All Star Team.



**STEVE GILMORE**  
 Age 18, Junior. Tackle  
 for 3 years. Scored 6  
 points. Made Honorable  
 Mention on S. O. C. All  
 Star Team.



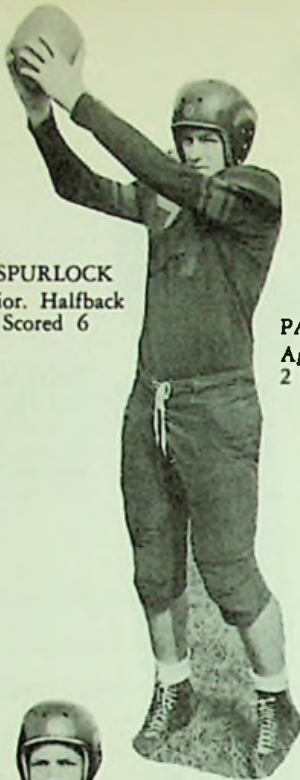
**TOM SPURLOCK**  
 Age 17, Senior. Halfback  
 for 4 years. Scored 70  
 points. Made Honorable  
 Mention on S. O. C. All  
 Star Team.

**JACK STOCKHAM**  
 Age 19, Senior. Fullback  
 for 4 years. Scored 70  
 points. Made S. O. C. All  
 Star Team.





**RICHARD SPURLOCK**  
Age 18, Senior. Halfback  
for 3 years. Scored 6  
points.



**PAUL DENNING**  
Age 18, Junior. End for  
2 years.



**RICHARD ENTLER**  
Age 16, Junior. End for  
2 years. Scored 1 point.



**ERNEST KENNARD**  
Age 15, Sophomore.  
Guard for 2 years.



**PAUL FARLEY**  
Age 16, Freshman. Half-  
back for 1 year. Scored  
7 points



**JEWEL WRIGHT**  
Age 16, Junior. Guard  
for 3 years. Scored 12  
points. S. O. C. Honor-  
able Mention.



**ROBERT BROWN**  
Age 17, Senior. Quarter-  
back for 4 years. Scored  
7 points.



**VERNON FLANNERY**  
Age 18, Senior. Half-  
back for 1 year. Scored  
7 points.



**HAROLD KEENE**  
Age 17, Senior. End for  
3 years. S. O. C. Honor-  
able Mention.



**KENNETH HAMER**  
Age 15, Sophomore.  
Halfback for 1 year.



**GALE BIGGS**  
Age 16, Junior. Guard  
for 2 years.

**KARL KUHN**  
Age 16, Junior. Tackle  
for 2 years.



**CARL EULETT**  
Age 16, Junior. Guard  
for 2 years.

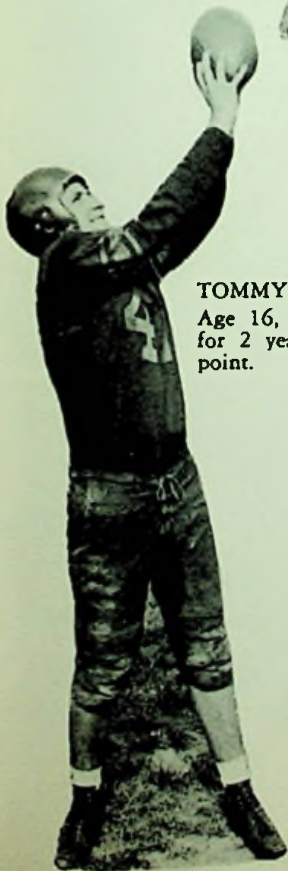
**TOM JONES**  
Age 15, Sophomore.  
Guard for 2 years.



**DON STILLWELL**  
Age 17, Sophomore.  
Tackle for 2 years.



**DON MALONE**  
Age 17, Sophomore.  
Halfback for 2 years.



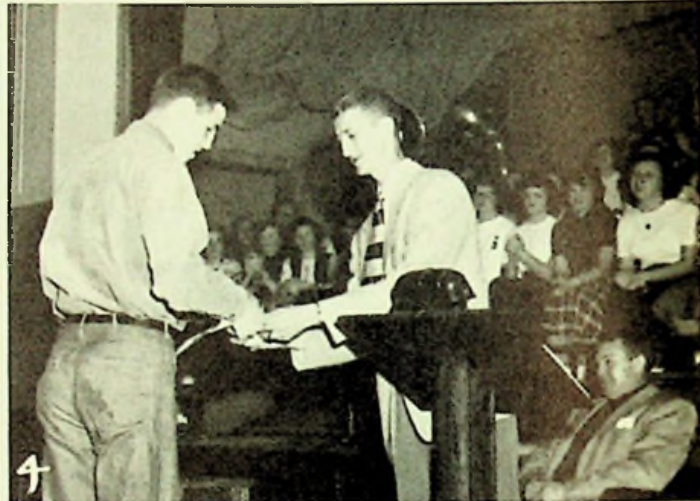
**TOMMY PAYNE**  
Age 16, Sophomore. End  
for 2 years. Scored 1  
point.



**BILL SPARKS**  
Age 15, Sophomore.  
Fullback for 2 years.



**RONNY PAYN**  
Age 16, Sophom-  
Center for 2 ye-



### TROPHY DAY AT WASHINGTON

This page illustrates "Trophy Day" at Washington for the Champion Football Team. 1. J. Bailey and B. Kennard, who made All State Honorable Mention, shown with Mr. Rolf. 2. Made S. O. C. Honorable Mention: *Bottom Row:* H. Keene, T. Spurlock, J. Bailey. *Second Row:* J. Stockham, J. Ruark, and J. Wright. 3. Captains Stockham and Kennard with Coach Everling. 4. F. Shepherd receiving S. O. C. All Star Trophy from Coach Hawhee of Waverly. 5. Bob Kennard makes S. O. C. All Star Team. 6. D. Mowery makes S. O. C. All Stars. 7. Bob Kennard presents trophy to Mr. Rolf.





**FRESHMEN FOOTBALL TEAM**

*ROW ONE, Left To Right:* Charles Dickson, Walter Jarrells, Ralph Pick, Kenneth Morgan, William Boyd, Ronald Damron. *ROW TWO:* Mr. Williams, Jerry Ferguson, Ralph Denning, Tom Tipton, Jerry Bower, Homer Hudson, Paul Vernier. *ROW THREE:* Franklin Shortridge, Paul Thompson, Norman Evans, Bill Pick, Richard Jordan, Ronald Bower, Frank Taylor.



**EIGHTH GRADE FOOTBALL TEAM**

*ROW ONE, Left To Right:* G. Knauff, H. Litz, N. Calloway, H. Gardner, S. Bridwell, H. McCann, W. Hurst. *ROW TWO:* Mr. Christian, H. Klever, C. Crowder, G. Cook, B. Monk, J. Whitman, I. Coleman, R. Browning. *ROW THREE:* D. Reynolds, J. Howard, T. Frazier, B. Lester, J. Bibbey, R. Shepherd.



MISS NAOMI WILLIAMS  
*Football Queen*

56  
Compliments of  
A FRIEND

Compliments of  
HERMS FLORAL COMPANY

# Queen's

# Attendants

MISS SHIRLEY KITCHEN  
*Sophomore Attendant*



MISS ANNA RIDGEWAY  
*Senior Attendant*



MISS CAROLE BROOK  
*Junior Attendant*

MISS LOIS SHEPHERD  
*Freshman Attendant*







**CHEERLEADERS**

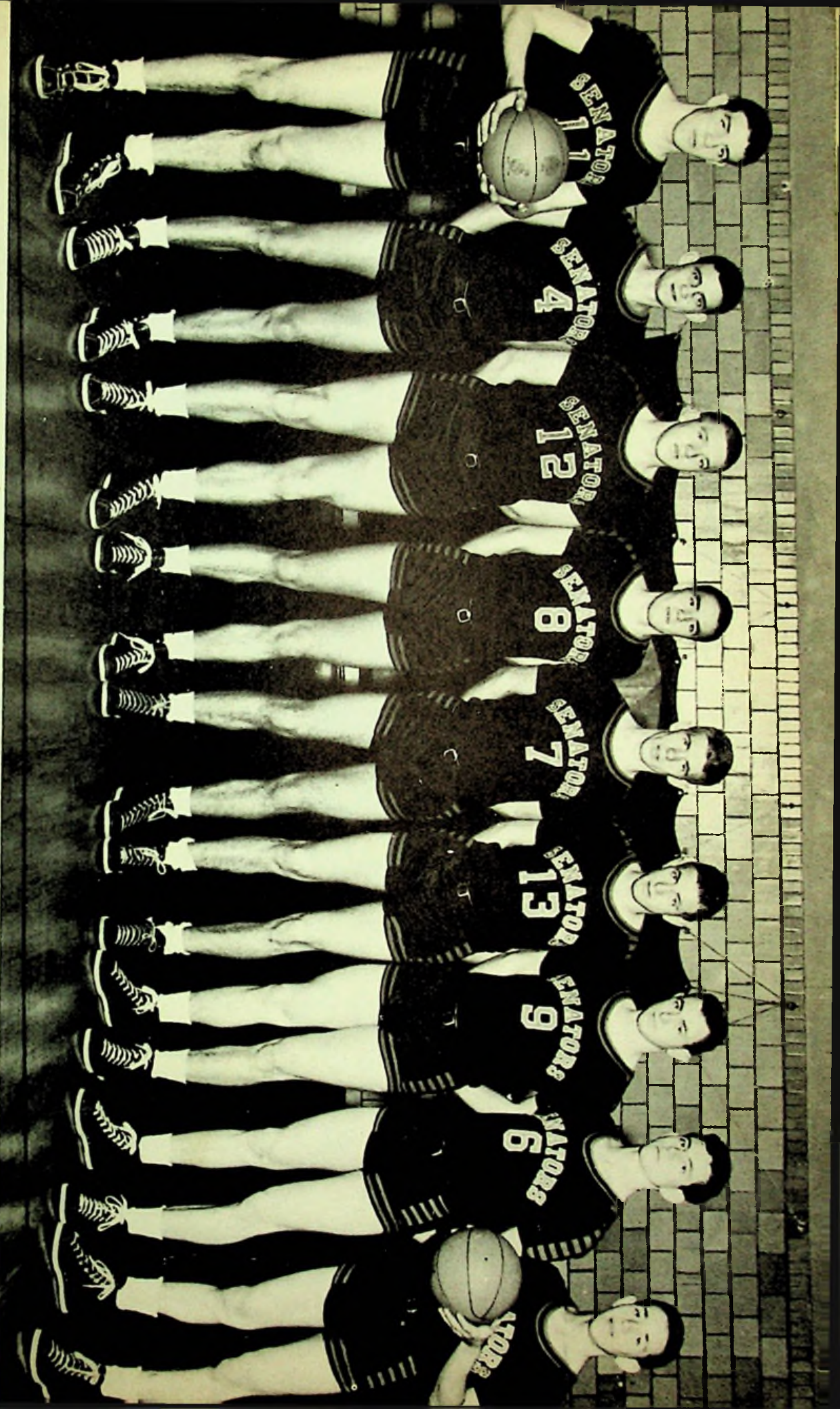
*BOTTOM, Left To Right: P. Flannery, N. Williams, J. Kitchen. TOP ROW: D. Keyser, K. Hamer, C. Brooks.*

**FOLSOM'S GROCERY**

Confections and school supplies

**HIBB'S HARDWARE CO.**

Wholesale Hardware



**VARSITY BASKETBALL TEAM**

*Left To Right:* Frank Shepherd, Harold Mefford, Jack Stockham, Keith Hopkins, Dick Mowery, Paul Denning, Tom Spurlock, Richard Spurlock, Dewey Conley.



**HAROLD BLEVINS**  
Age 17, Senior. One year  
on Varsity. Scored 190  
points.



**STEVE GILMORE**  
Age 17, Junior. One year  
on Varsity. Scored 36  
points.



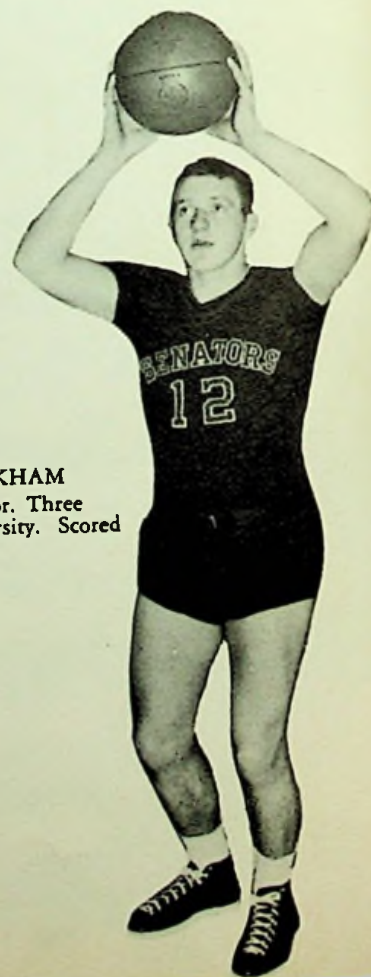
**TOM SPURLOCK**  
Age 17, Senior. Two years  
on Varsity. Scored 87  
points.



**FRANK SHEPHERD**  
Age 17, Junior. Two  
years on Varsity. Scored  
355 points.



**HAROLD MEFFORD**  
Age 17, Senior. Two  
years on Varsity. Scored  
176 points.



**JACK STOCKHAM**  
Age 19, Senior. Three  
years on Varsity. Scored  
69 points.



**KEITH HOPKINS**  
Age 18, Senior. Played 1  
year on Varsity. Scored  
14 points.



**DEWEY CONLEY**  
Age 16, Junior. Played  
1 year on Varsity.



**DICK MOWERY**  
Age 17, Sophomore.  
Played 1 year on Varsity.  
Scored 27 points.



**PAUL MEYERS**  
Age 17, Senior. Played  
1 year on Varsity.  
Scored 2 points.



**PAUL DENNING**  
Age 19, Junior. Played  
2 years on Varsity.  
Scored 60 points.



**RICHARD SPURLOCK**  
Age 19, Senior. Played  
1 year on Varsity.  
Scored 2 points.

**STAR DRY CLEANERS**

Phone 2-7731 508 Second Street

**DAULTON'S GROCERY**

402 Second Street



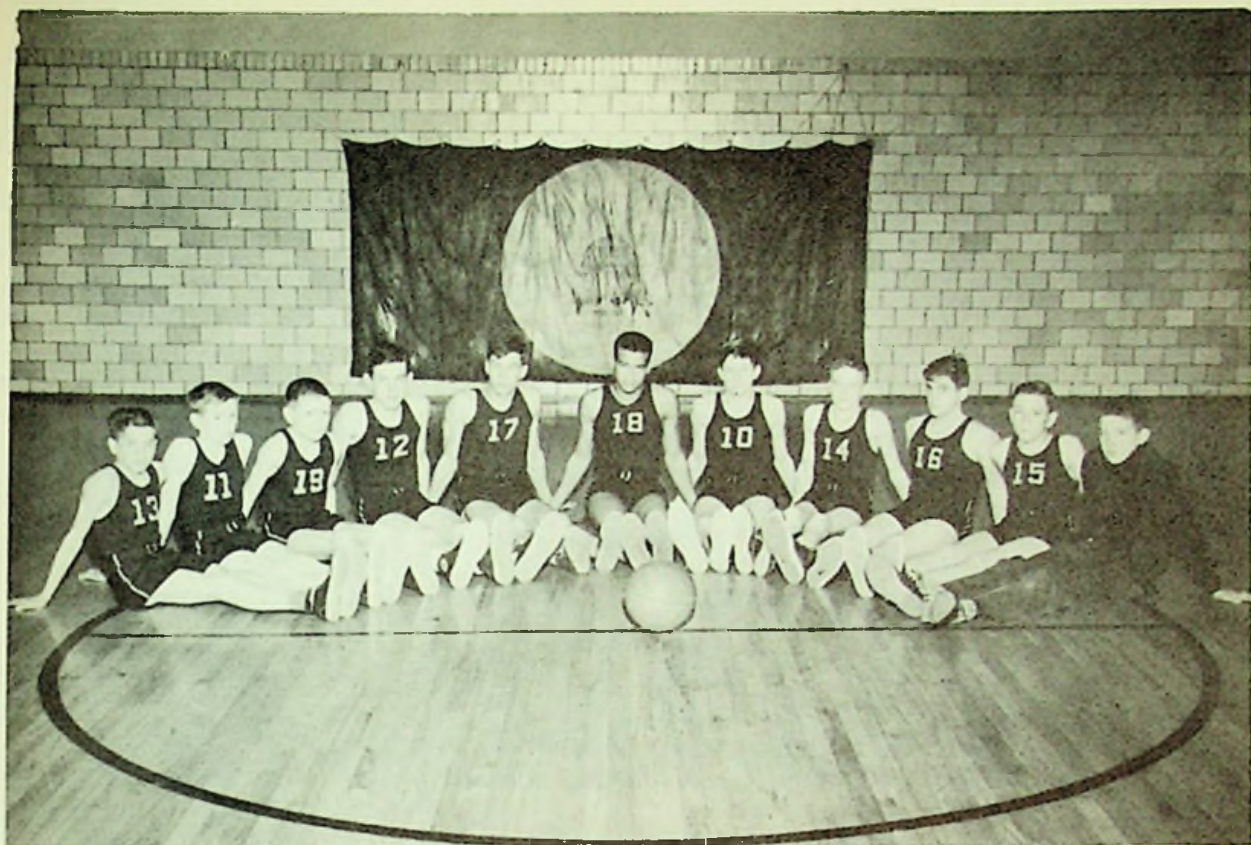
**RESERVE BASKETBALL TEAM**

*KNEELING, Left to Right: P. Farley, B. Sparks, K. Hamer, J. Hackworth, J. Wright, J. Bower.  
STANDING: G. Kuhn, C. Dixon, J. Knauff, R. Entler, T. Payne, R. Payne.*



**FRESHMAN BASKETBALL TEAM**

*KNEELING, Left to Right: B. Boyd, R. Lowe, S. Howard, R. Denning, H. Hudson, N. Evans.  
STANDING: W. Jayne, F. Taylor, T. Tipton, R. Meyers, R. Jordan, J. Walker, W. Jarrels.*



**EIGHTH GRADE BASKETBALL TEAM**

*LEFT TO RIGHT: G. Howard, C. Crowder, J. Partlow, S. Bridwell, N. Calloway, H. Gardner, H. Green, G. Knauff, J. Royce, H. Klever, R. Browning.*



**EIGHTH GRADE CHEERLEADERS**

*LEFT TO RIGHT: Carol Burtrum, Dolores O'Dell, Loretta Brown, Dolores Hall.*

**LONG AND COMPANY**

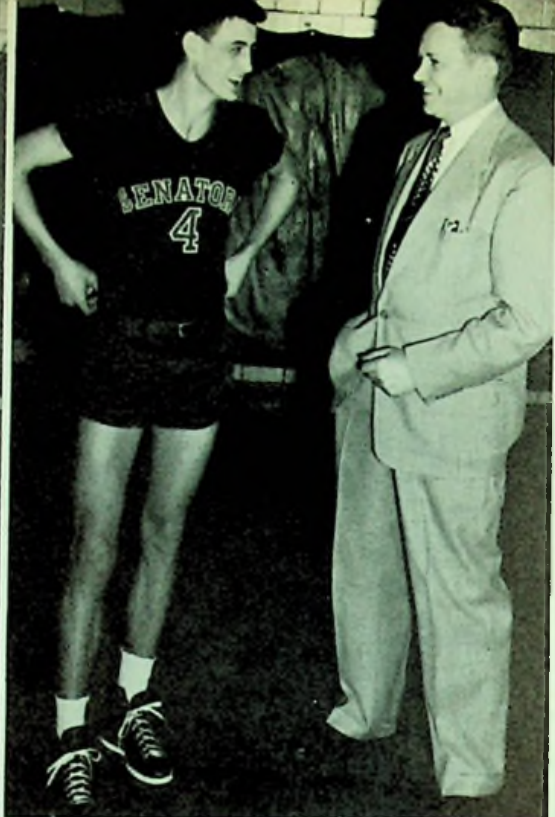
The house of quality furniture

**WOLFF**

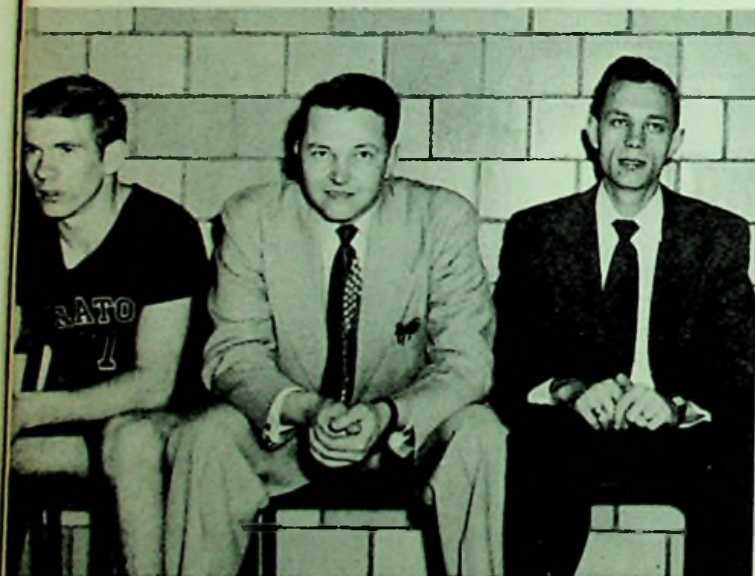
for good clothing



MANAGERS—R. Bower and S. Erlenwein



Captain Mefford and Coach Davis



COACHES—Mr. Davis and Mr. Williams

## SCHEDULE — 1951-52

WHS 46	Rarden 43
WHS 48	South Point 30
WHS 51	Minford 64
WHS 53	McKell 57
WHS 57	Wavefly 62
WHS 47	South Webster 44
WHS 51	Coal Grove 45
WHS 76	Otway 61
WHS 55	Minford 85
WHS 50	Wheelerburg 52
WHS 50	Green 42
WHS 56	Clay 72
WHS 62	Lucasville 61
WHS 52	McDermott 40
WHS 48	Central Catholic 22
WHS 60	New Boston 62
WHS 50	Portsmouth East 59
WHS 45	County All Stars 49
WHS 62	Ironton 51
WHS 48	Portsmouth 81

FLANNERY'S SERVICE STATION

MARVIN JONES

# Activities



A flood scene along the Scioto River bottom land. It was printed through the courtesy of the Portsmouth Times.





### LIBRARIANS

*SEATED, Left to Right:* Mrs. Donley, Librarian, D. Bower, J. Payne, S. Hoover. *STANDING:* L. Sheppard, C. Milison, R. Merritt, A. Howard, B. Wedebrook.



### NEWSPAPER STAFF

*SEATED, Left to Right:* Mrs. Hopkins, Advisor, J. McGraw, B. Knauff, A. Ridgeway. *STANDING:* R. Spurlock, L. Cochran, N. Martin, B. Journey, I. Eulett.

DON C. STOCKHAM & SONS

General Merchandise

MILLERS' STORE

Buena Vista, Ohio



### INDUSTRIAL ARTS CLUB

*SEATED, Left to Right:* Mr. Moore, G. Ober, D. McCown, D. Pollard, F. Shaw, R. Meyers, D. Ishmael, D. Schackart, D. Byrd, P. Riley, J. Kessinger. *STANDING:* J. Andrews, P. Hall, B. Logan, D. Hall, J. Thomas, J. Ward, R. Howell, D. Litz, B. Sparks, R. Caudill, K. Kuhn, D. Horsely.



### HOME ECONOMICS CLUB

*FIRST ROW, Left to Right:* A. Montgomery, E. Wiseman, B. Schaffer, M. Howard, J. Bishop, I. Coburn, B. Huff, C. Leedy, N. Royal, B. Book, B. Fife, M. McNeil, S. Dingus, R. Pistole, D. Bower, S. McCall, R. McCall, J. King. *SECOND ROW:* J. Frazier, L. Shepherd, J. Coleman, W. Ratcliff, J. Nolder, B. Mangus, M. Stanley, M. Ober, G. Shaw, H. Walker, M. Renn, J. Howard, B. McCann, B. Hunt, J. Howell, J. Skaggs, M. Medley, S. McGlone, N. Smith, B. Steele, C. Stout. *THIRD ROW:* A. Easter, B. Vaughters, B. Benson, L. Taylor, S. Byrd, E. Lackey, V. Smith, A. Lackey, J. Parker, P. Sparks, C. Kincaid, L. Renn, A. Howard, W. Risner, V. Pendleton, G. Howard, S. Nichols, G. Pennington, B. Sanford.



**LIBRARIANS**

*SEATED, Left to Right: Mrs. Donley, Librarian, D. Bower, J. Payne, S. Hoover. STANDING: L. Sheppard, C. Milison, R. Merritt, A. Howard, B. Wedebrook.*



**NEWSPAPER STAFF**

*SEATED, Left to Right: Mrs. Hopkins, Advisor, J. McGraw, B. Knauff, A. Ridgeway. STANDING: R. Spurlock, L. Cochran, N. Martin, B. Journey, I. Eulett.*

**DON C. STOCKHAM & SONS**

General Merchandise

**MILLERS' STORE**

Buena Vista, Ohio



### INDUSTRIAL ARTS CLUB

*SEATED, Left to Right:* Mr. Moore, G. Ober, D. McCown, D. Pollard, F. Shaw, R. Meyers, D. Ishmael, D. Schackart, D. Byrd, P. Riley, J. Kessinger. *STANDING:* J. Andrews, P. Hall, B. Logan, D. Hall, J. Thomas, J. Ward, R. Howell, D. Litz, B. Sparks, R. Caudill, K. Kuhn, D. Horsely.



### HOME ECONOMICS CLUB

*FIRST ROW, Left to Right:* A. Montgomery, E. Wiseman, B. Schaffer, M. Howard, J. Bishop, I. Coburn, B. Huff, C. Leedy, N. Royal, B. Book, B. Fife, M. McNeil, S. Dingus, R. Pistole, D. Bower, S. McCall, R. McCall, J. King. *SECOND ROW:* J. Frazier, L. Shepherd, J. Coleman, W. Ratcliff, J. Nolder, B. Mangus, M. Stanley, M. Ober, G. Shaw, H. Walker, M. Renn, J. Howard, B. McCann, B. Hunt, J. Howell, J. Skaggs, M. Medley, S. McGlone, N. Smith, B. Steele, C. Stout. *THIRD ROW:* A. Easter, B. Vaughters, B. Benson, L. Taylor, S. Byrd, E. Lackey, V. Smith, A. Lackey, J. Parker, P. Sparks, C. Kincaid, L. Renn, A. Howard, W. Risner, V. Pendleton, G. Howard, S. Nichols, G. Pennington, B. Sanford.



### LATIN CLUBS I AND II

*FIRST ROW, Left to Right:* Mrs. Donley, S. Jordan, C. Brooks, J. Arner, B. Elrod, N. Peters, L. Thomas, G. Fields, P. Smith, V. Wright. *SECOND ROW:* J. Nibert, M. Entler, B. Pruitt, M. McCowen, G. Lakin, J. Brown, S. Warren, S. Nichols, C. Milison, P. Andre. *THIRD ROW:* D. Fife, J. Carroll, C. Conley, W. Gregory, R. Lowe, J. Walker, J. Richardson, J. Biggs, T. Tipton.



### SPANISH CLUB

*SEATED, Left to Right:* J. Jackson, F. Wilburn, D. Gyor, R. Ratliff, S. Gilkerson, R. Williams, S. Kitchen. *STANDING:* D. Caudill, O. Ridgeway, J. Wright, C. Kincaid, P. Sparks, B. Gilmore, K. Hamer.



### FRESHMEN-SOPHOMORE ENGLISH CLUB

*FIRST ROW, Left to Right:* G. Conley, S. Jordan, D. Hoover, B. Shaffer, C. Leedy, J. Arnett, V. McGraw, J. Sissel, N. Peters, S. Elliott, S. McCall, L. Schied, S. Gilkerson, P. Morgan, T. Cooper. *SECOND ROW:* G. Perry, B. Shepherd, L. Bower, J. Walker, C. Conley, W. Gregory, P. Sparks, J. Nibert, D. Kitchen, R. Bradley, R. Williams, D. Manning, B. Hunt, G. Fields, P. Smith. *THIRD ROW:* J. Howe, B. Gilmore, L. Thomas, S. Lauder, L. Meade, L. Thompson, K. Hamer, B. Pruitt, G. Lakin, M. McCowen, S. Jones, J. Coleman, A. Howard, R. Damron, J. Bower, L. Hazelbaker, P. Thompson. *FOURTH ROW:* K. Hamer, P. Perry, S. Warren, W. Hopkins, C. Kincaid, K. Cooper, L. Caudill, C. Smith, M. Ober, M. Weaver, J. Brown, G. Scott, P. Arnett, P. Andre, R. Phillips, J. Schupert J. Biggs.



### JUNIOR-SENIOR ENGLISH CLUB

*FIRST ROW, Left to Right:* C. Brooks, B. Leedy, V. Shaw, B. Elrod, B. Williams, C. Sheets, B. Conley, D. Bower, J. Kitchen, A. Ridgeway, I. Eulett, J. Smith, R. Ratliff, B. Journey, A. Swords, V. Smith, P. Perry, M. Renn, D. Williams. *SECOND ROW:* A. Redoutey, A. Davis, B. Sanford, M. Entler, B. Lyons, C. Milison, E. Denning, L. Rayburn, M. Wear, B. Schupert, B. Lewis, D. Davis, B. McCann, J. Gyer, R. Mullen, A. Easter, N. Williams, M. Meade. *THIRD ROW:* L. Cochran, R. Staten, W. Thurman, B. Vaughters, A. Mershon, P. Whaley, C. Shively, G. McGovney, L. Sheppard, M. Stegall, T. Sartin, S. Kirker, J. Rhea, R. Spurlock, R. Brown, H. Keene, D. Welch, R. Roth.



### NATIONAL HONOR SOCIETY

*SEATED, Left to Right:* C. Brooks, C. Lakin, C. Sheets, B. Conley, J. Smith, B. Elrod, J. McGraw, V. Smith, P. Perry, B. Lewis. *STANDING:* J. Love, C. Milison, R. Quickle, N. Williams, M. Meade, L. Cochran, R. Staten, A. Mershon, P. Whaley, B. Brown.



### SENIOR SURVEY

*LEFT TO RIGHT:* B. Conley, C. Lakin, L. Rayburn, R. Mullen, D. Welch, H. Keene, B. Brown. *Insets show the county winners: Left to Right:* D. Welch, first place, B. Brown, seventh place, H. Keene, tenth place.



### MATHEMATICS CLUB

*SEATED, Left to Right:* Mr. Williams, J. Smith, C. Lakin, P. Roark, J. Carroll, L. Thomas, G. Fields, C. Conley, J. Callihan, Mr. Beadle. *STANDING:* J. Biggs, J. Love, J. Brown, R. Mullen, A. Jordan, M. Meade, R. Staten, L. Cochran, S. Nelson, P. Andre, K. Hamer, P. Whaley, D. Beekman.



### GIRLS' ATHLETICS CLUB

*SEATED, Left to Right:* B. Moore, R. Hill, S. Gilkerson, P. Yeager, B. Huff, P. Morgan, M. McNeil, A. Tieman, J. Frazier, Miss Ratliff. *SECOND ROW:* L. Thomas, B. Gilmore, P. Flannery, B. Pruitt, G. Lakin, P. Sparks, G. Fields, C. Kincaid, M. McCowen, L. Meade. *THIRD ROW:* S. Kitchen, O. Ridgeway, J. Brown, J. Conley, S. Nichols, P. Andre, G. Pennington, J. Litteral, L. Denning, B. Lewis.



# Your Annual Staff



ANNUAL STAFF

*SEATED, Left to Right:* Wilma Howard, ass't. sales manager; Letitia Schied, artist; Sue Hoover, ass't. editor; Jean Payne, editor; Virginia Pendleton, secretary-treasurer. *STANDING:* Ed Gulick, artist; Jane Hazelbaker, advertising; Donna Davis, advertising; Naomi Williams, typist; Louise Denning, sales manager; Ronald Floyd, photographer; Roma Mullen, typist (not pictured); Mr. Christian, advisor, (not pictured).

VAUGHTER'S SHELL STATION

11th & Offnere St.

PHOENIX PIE COMPANY



### SCHOLARSHIP

ALL THESE STUDENTS TOOK THE PRELIMINARY TESTS LAST SPRING  
**FIRST ROW**, *Left to Right*: S. Jordan, V. Shaw, C. Brooks, S. Gilkerson, B. Conley, J. Smith, C. Lakin, I. Eulett, V. Smith, J. Carroll, C. Conley, L. Thomas, G. Fields. **SECOND ROW**: K. Cooper, J. Love, B. Pruitt, P. Smith, C. Milson, J. Bower, R. Elrod, B. Lewis, R. Quickle, N. Williams, M. Meade, S. Kirker. **THIRD ROW**: T. Riser, E. Gulick, R. Staten, K. Hamer, P. Whaley, B. Wolery, R. Spurlock, R. Brown, H. Keene, H. Hall, R. Bean, D. Welch, F. Cooper, R. Roth.

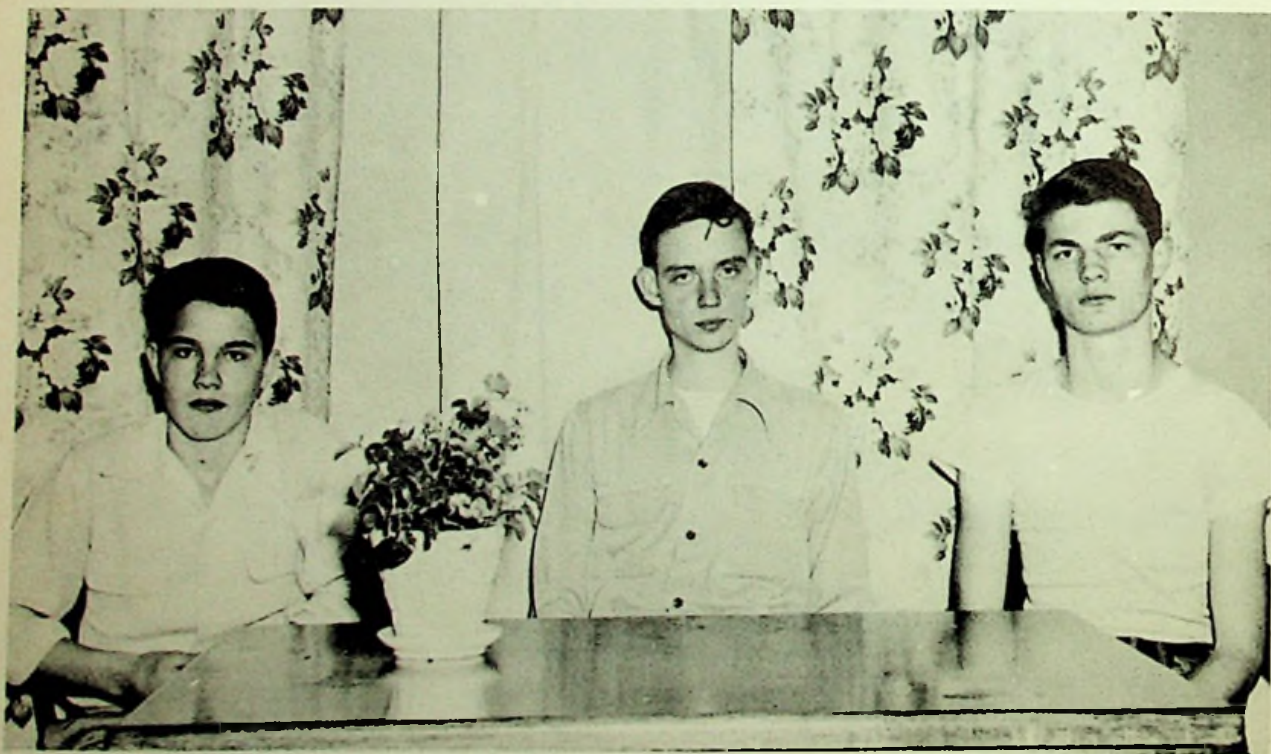


For the first time in our testing program, Washington was placed in District I, competing with the larger schools like Portsmouth, Marietta, Ironton, etc. The following pages show the results of our first year's competition in this class. **JERRY BOWER** won First in algebra in Division I and Tenth in the state in Division I.



#### SCHOLARSHIP WINNERS

*LEFT TO RIGHT:* Geneva Fields ranked second in Division I in English I; second in Division I regardless of classification; and third in the state regardless of classification. Marion Meade ranked second in Division I in English II; second regardless of classification; and sixth in the state regardless of classification. Joyce Smith ranked second in Division I in English II; second regardless of classification; and sixth in the state regardless of classification.



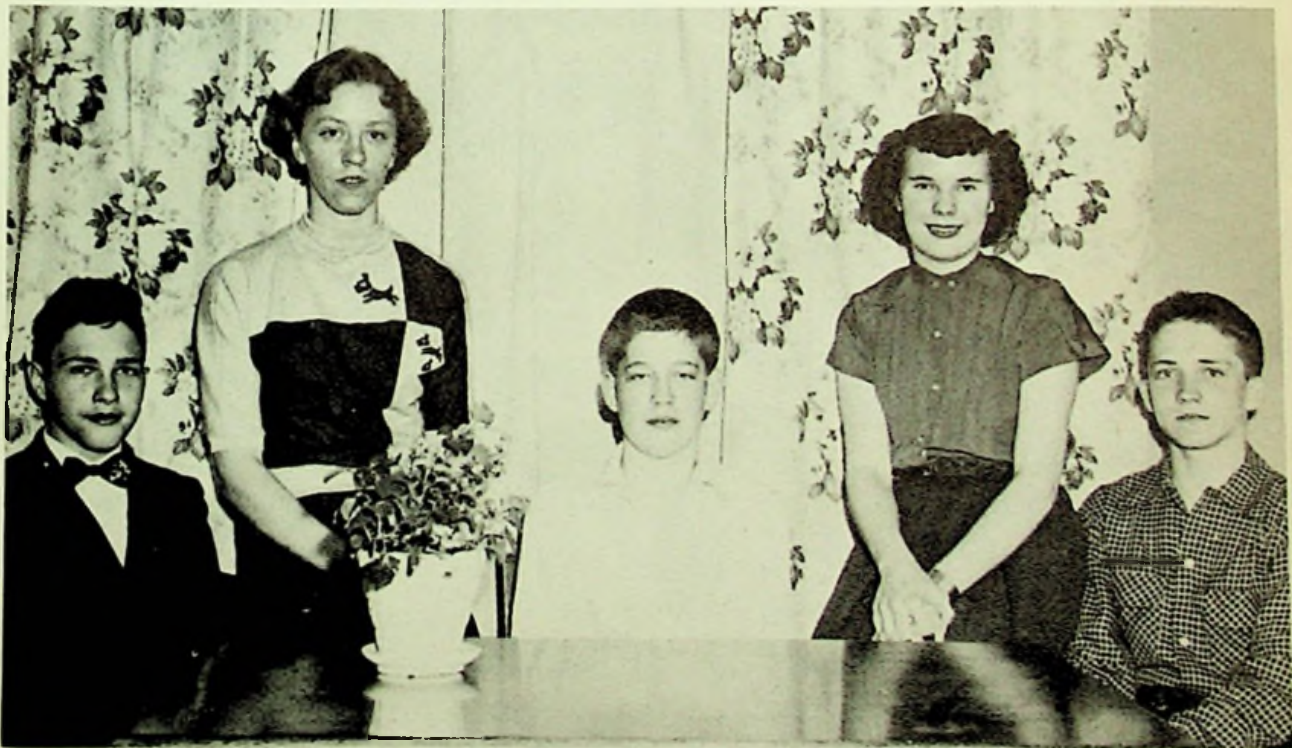
#### SCHOLARSHIP WINNERS

*LEFT TO RIGHT:* Charles Conley ranked second in district in Division I in science; seventh in district regardless of classification. Donald Welch ranked second in the district in American History; eighth in Division I regardless of classification; and fifteenth in the state in Division I regardless of Classification. Fred Cooper ranked second in the district in Division I in science; seventh in district regardless of classification.



### SCHOLARSHIP WINNERS

*LEFT TO RIGHT:* Laura Thomas ranked third in Division I in Latin; eighth in district regardless of classification. Paul Whaley ranked fourth in World History, Division I; ninth in the district regardless of classification. Ruth Quickle ranked third in Bookkeeping I, Division I; fourth in district regardless of classification; and eighth in the state regardless of classification.



### SCHOLARSHIP WINNERS

*LEFT TO RIGHT:* Walter Gregory ranked fifth in the county in the Eighth Grade State Test. Charlene Smith ranked third in the county in the Eighth Grade State Test. Joe Biggs ranked first in the county in the Eighth Grade State Test. Alberta Howard ranked eighth in the county in the Eighth Grade State Test. John Walker ranked second in the county in the Eighth Grade State Test.



SNAPSHOTS

1. E. Gulick and R. Floyd. 2. D. Varney. 3. T. Cooper. 4. G. Ober, 5. R. Frailey. 6. M. Himes. 7. G. Scott. 8. D. Davis. 9. I. Eulett. 10. J. Kitchen and R. Spurlock. 11. Miss Ratliff's gym class. 12. B. Thomas, K. Brooks and B. Barber. 13. G. Lakin and P. Swearingen. 14. A. Ridgeway and N. Martin. 15. H. Blevins and W. Risner. 16. S. Jordan and L. Schied. 17. L. Sutton.

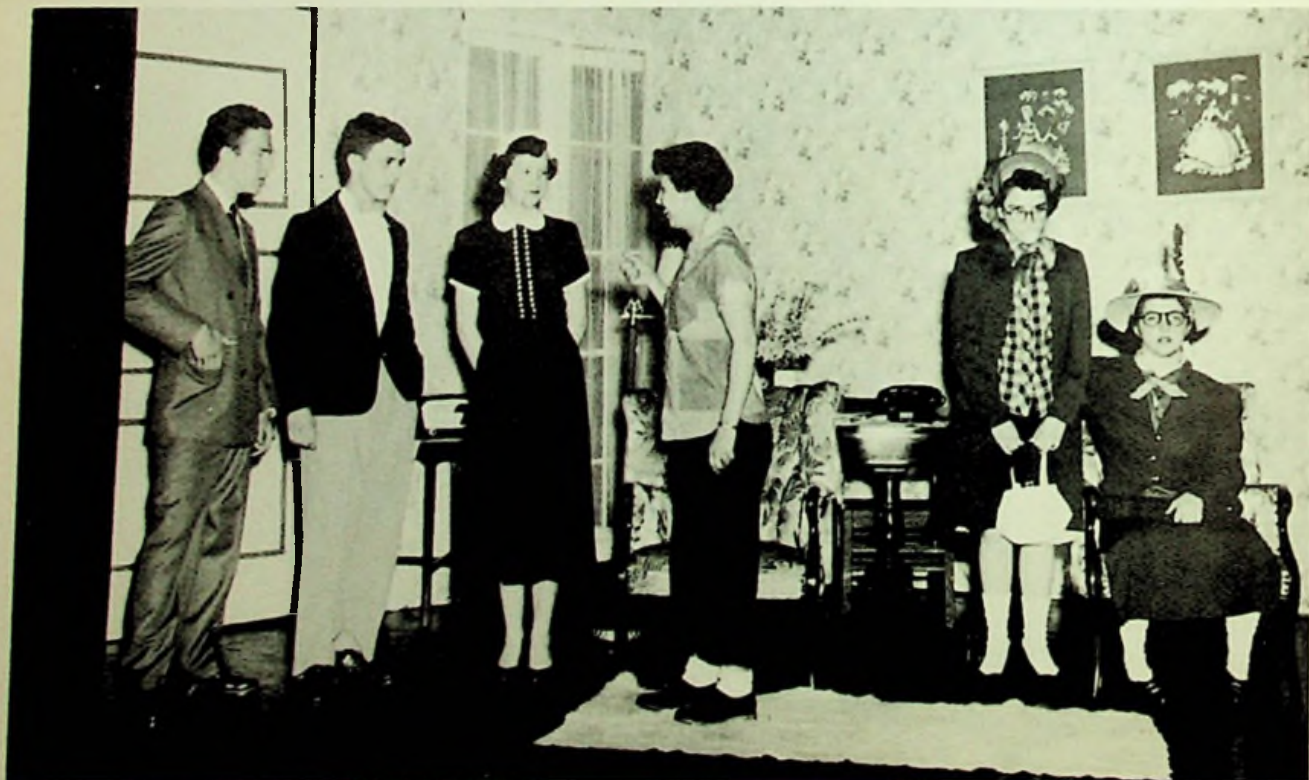


1. S. Howard, B. Barber. 2. A flood scene. 3. Mr. Gillette, Mr. Davis, Mr. Rolf, Mr. Christian.  
 4. B. Lyons. 5. G. McGovney, L. Sheppard, J. Payne, B. Conley, M. Jarrells. 6. C. Reynolds. 7.  
 S. Jordan. 8. M. Graham, S. Kirker, N. Williams. 9. J. Howard, A. Howard, B. McCann. 10.  
 J. Parker. 11. J. Sowards, W. Thurman. 12. W. Jayne.



**JUNIOR CLASS PLAY—"PEOPLE ARE FUNNY"**

*LEFT TO RIGHT:* S. Erlenwein, "Elmer Wehle"; V. Shaw, "Winnie Wehle"; J. Dunaway, "Kenny Budd"; D. Davis, "Jussie Budd"; G. Biggs, "John Budd"; J. Hazelbaker, "Florence Fairchild"; P. Swearingen, "Gladys Bliss"; N. Morrow, "Olga Oguispanski"; Director, Mrs. Melvin.



**JUNIOR CLASS PLAY—"PEOPLE ARE FUNNY"**

*LEFT TO RIGHT:* J. Rhea, "Arthur Fairchild"; B. Davis, "Jack Whitman"; B. Lewis, "Helene Budd"; R. Frailey, "Betty Budd"; M. Jarrells, "Pamela Paine"; D. Gyor, "Prudence Paine".  
Director, Mrs. Melvin.



**JUNIOR CLASS PLAY—"PEOPLE ARE FUNNY"**

*LEFT TO RIGHT:* B. Rose, "Olga Oguispanski"; D. Williams, "Gladys Bliss"; W. Risner, "Florence Fairchild"; R. Cox, "Arthur Fairchild"; J. Smith, "Berty Budd"; P. Perry, "Helene Budd"; R. Caudill, "Jack Whitman". Director, Mrs. Melvin.



**JUNIOR CLASS PLAY—"PEOPLE ARE FUNNY"**

*LEFT TO RIGHT:* M. Graham, "Winnie Wehle"; M. May, "Kenny Budd"; D. Conley, "Elmer Wehle"; B. Wedebrook, "Jussie Budd"; G. Biggs, "John Budd"; D. Gyor, "Prudence Paine"; C. Brooks, "Pamela Paine". Director, Mrs. Melvin.



# "A Case of



## SENIOR CLASS PLAY

*Seated, Left to Right:* A. Ridgeway, "Betty Parker"; L. Hhepherd, "Joan Abernaker"; B. Logan, "Louella"; B. Williams, "Mrs. James"; J. Wedebrook, "Mrs. Brunswick"; B. Conley, "Miss Bright"; M. Conley, "Gwen Anderson".  
*Standing:* K. Elrod, "Dickie Parker"; R. Brown, "Bob Parker"; H. Hall, "Plainclothes Man"; D. Welch, "Mr. Parker"; R. Floyd, "Mr. Abernaker"; G. McGovney, "Mrs. Parker"; D. Hall, "Eddie". Directors, Mrs. M. Donley, Mr. H. Everling.

Compliments of

# Springtime"



## SENIOR CLASS PLAY

*Seated, Left to Right:* J. Kitchen, "Mrs. Hill"; S. Hoover, "Louella"; J. Parker, "Mrs. Brunswick"; L. Lakin, "Betty Parker"; R. Mullen, "Miss Bright"; J. Payne, "Mrs. Parker". *Standing:* R. Spurlock, "Bob"; L. Cochran, "Dickie Parker"; H. Keene, "Mr. Parker"; D. Caudill, "Mr. Abernaker"; N. Williams, "Joan Abernaker"; P. Meyers, "Eddie". Directors, Mrs. M. Donley, Mr. H. Everling.

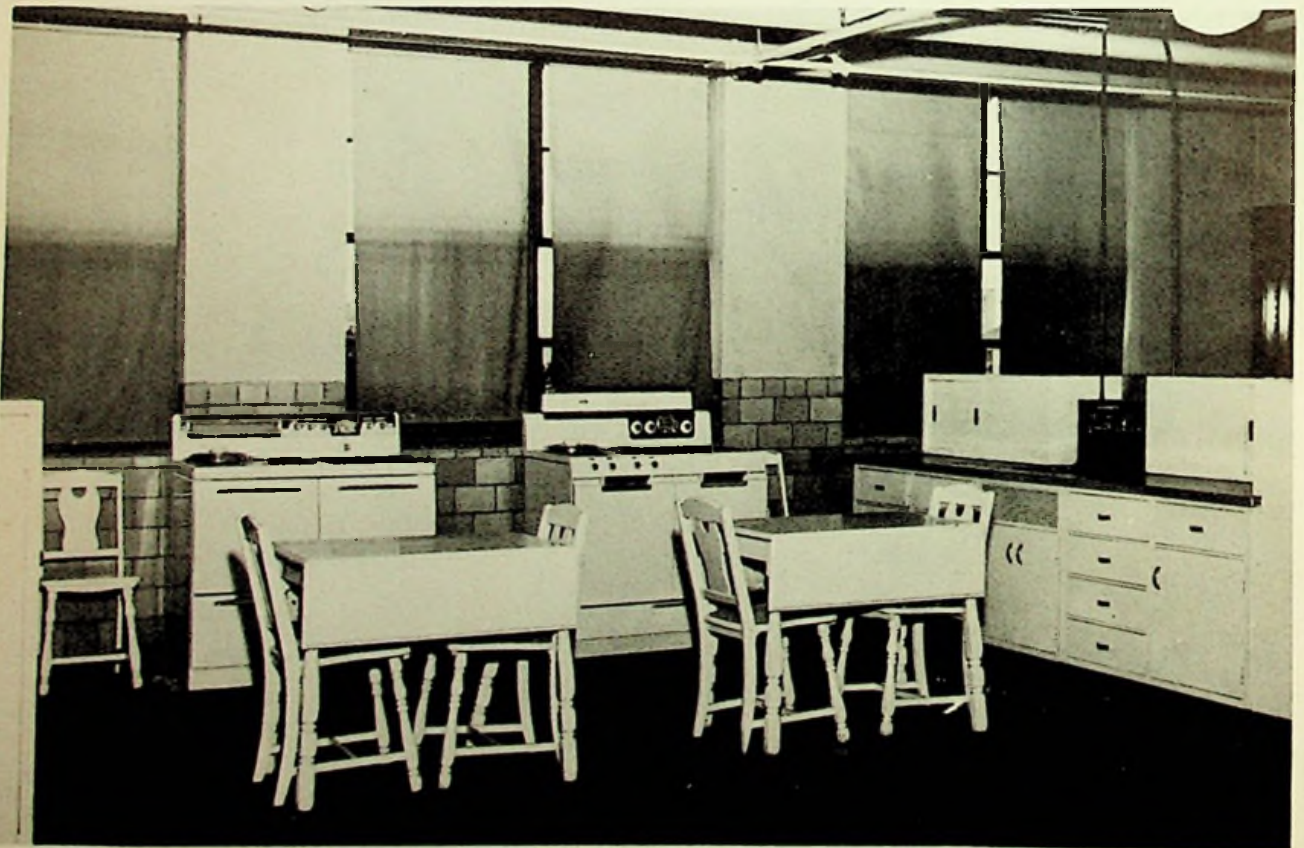
Compliments of

FROWINE CONSTRUCTION COMPANY

CUNNINGHAM HARDWARE



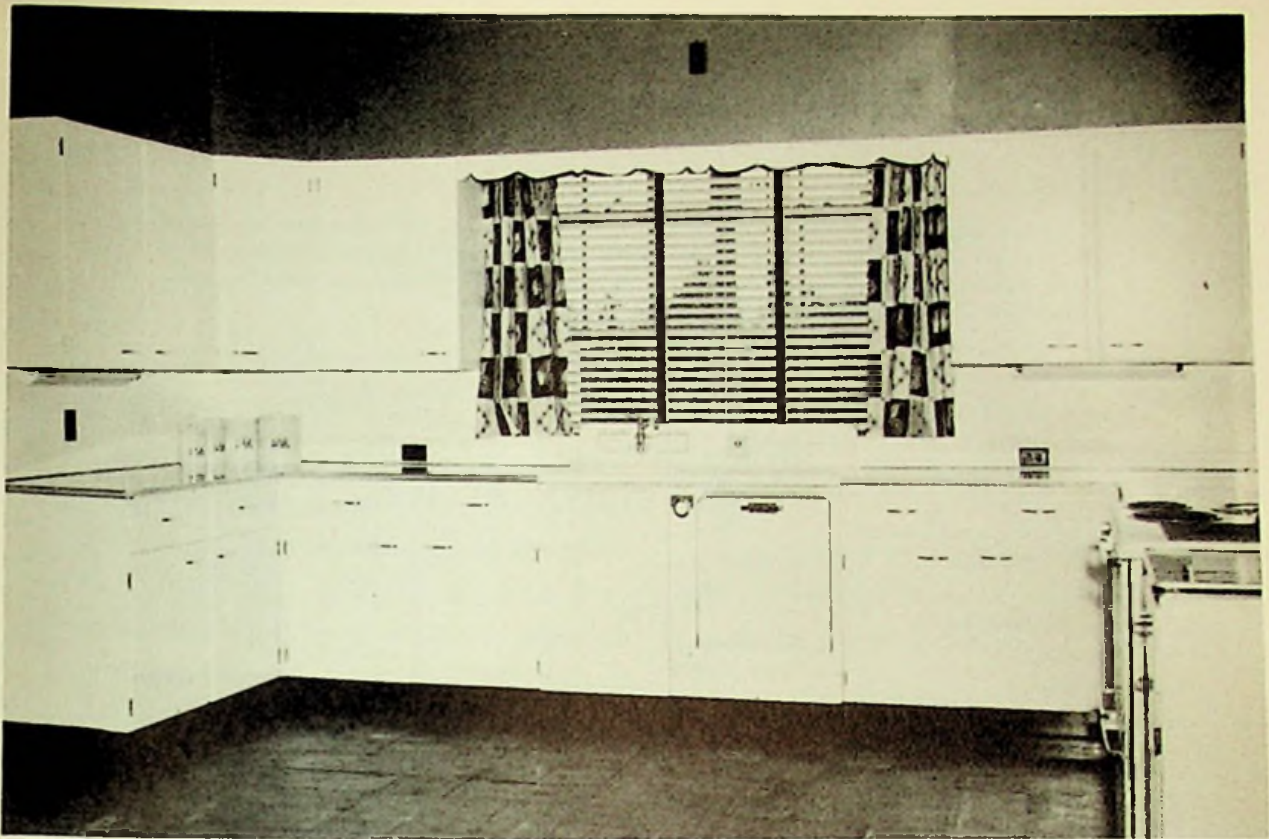
This was the corner of the Home Economics room which has been filled in as shown by Copy A on page 83.



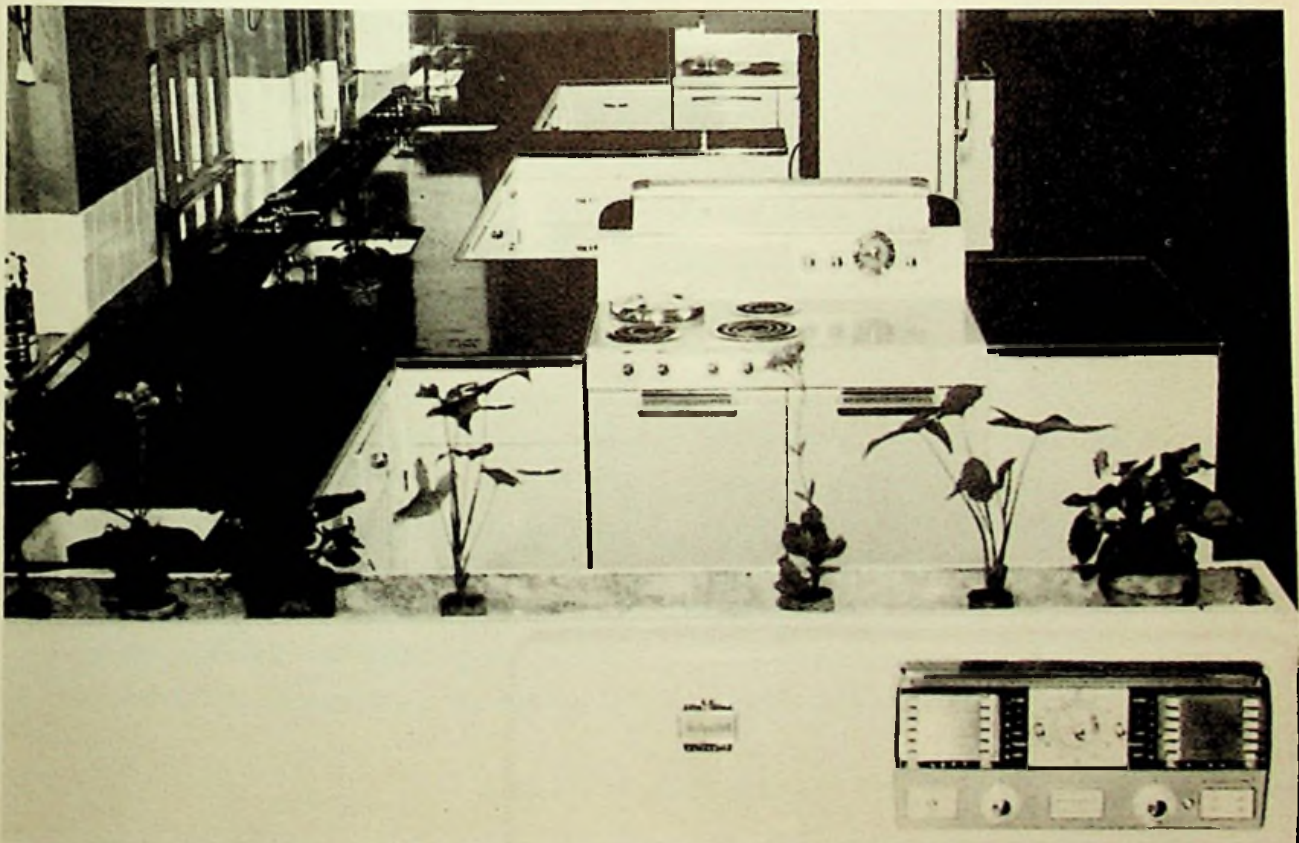
This shows the old type stoves and cabinets before remodeling.

Compliments of

OHIO POWER COMPANY



This shows the same corner after new cabinets were added. This modernizing was made possible by the State Rehabilitation Program.



This picture illustrates the beauty of the new ranges placed in Washington High School by the Ohio Power Company's School Program.

# WHO'S WHO FROM W. H. S.

The Annual Staff has endeavored to list as many Alumni as possible who are in the Armed Services and some who have entered the professional field. We realize we have possibly omitted some names but this is entirely due to lack of information. We hope that you enjoy knowing what some of the former graduates are doing.

## TEACHERS

HELEN RATLIFF  
 KATHLEEN BLEVINS  
 KENNETH RAPP  
 PAUL SCHWAMBERGER  
 LUCY HALL  
 ANNA BELLE RATLIFF  
 MARILYN MILLER  
 JOHN TIPTON  
 CORA WATTERS  
 ORVILLE REISER, JR.  
 EVAN SURRAN  
 CARL WOTEN  
 RAYMOND O'DELL  
 MARVIN DISTEL  
 JOSEPH SCHREICK

## AIR FORCE

BILL HARRISON  
 CLYDE MAY  
 DAVID KESSINGER  
 RICHARD WOTEN  
 BOB GILKERSON  
 PAUL MORROW  
 ROBERT ARN  
 JACK BOOK  
 BILL BOOK  
 PAUL O'DELL  
 ELBERT BLACK  
 WILLIAM HOWARD  
 FRANK SWEARINGEN  
 HASKELL WRIGHT  
 DON MOORE  
 ALLEN JOURNEY  
 WOODROW GILMORE  
 LAWRENCE WOTEN  
 SAM REXROAD  
 CHARLES COOK  
 GENE SMALLEY  
 TOM GRICE

## ARMY

MORRIS STAMM  
 CARL WESSEL, JR.  
 DELBERT ENTLER  
 EARL JORDAN  
 HARRY O'DELL  
 PAUL REISER  
 CHARLES RUARK  
 RALPH RAPP  
 DON KEENE

## MARINES

TOM ROYAL  
 FRED COX  
 JACK BLEVINS

## NAVY

LEE SHAW  
 EDWARD KENNARD  
 RAYMOND ANDREWS  
 BOB ARNETT  
 BILL LITZ  
 RICHARD MEEKER  
 RAY FRAILEY  
 JIM WILLIAMS  
 BILL HOPPER  
 HOWARD WEGHORST  
 EVERETT VIRGIN  
 DON LESTER  
 EUGENE WILBURN  
 GEORGE GRAHAM  
 CHARLES CARTER  
 JIM FOSTER  
 DON SPARKS  
 KERMIT PRINCE  
 DAVID FENIMORE  
 WENDELL MITCHELL

## WACS

VIOLET MANGUS  
 NURSES' TRAINING  
 PEARL SWEARINGEN  
 JANET HURST

## REGISTERED NURSES

SHIRLEY WRIGHT  
 NORMA WESSELL

## ATTENDING COLLEGE

DON MANN, Ohio U., Civil Eng.  
 BARBARA BRANDEL, Ohio State  
 JULIA WRIGHT, Ohio Univ.  
 WILLARD WILLIAMS, George Washington Univ.  
 DON SCAGGS, Cedarville Col.  
 GEORGE THOMPSON, Ohio U.  
 RAY WILTSHIRE, Ohio State

## ART

ELMER FRASHER, University of Cincinnati  
 PEGGY RIEHL  
 JEAN HOUSE

## LAWYER

ROY GABBERT

## BASEBALL

GLENN NELSON

## MEDICAL TECHNICIANS

RALPH STAMM  
 JUNE MOORE

## HIGHWAY PATROL

EARL WEBB

## MINISTER

CARL HALL  
 JOEL MEYERS

## BUSINESS

MAXWELL JAMES

## AGRICULTURE

ROGER CUNNINGHAM

## GOVERNMENT

RICHARD ANDRE

## IN MEMORIAM

RALPH CLIFTON  
 WILLIAM COOLEY

Compliments of a Friend

DAN DEE POTATO CHIP COMPANY

"They're Hylo-ized"

## BUILDING PROGRAM

The Washington School Board and school executives wish to thank the voters of this District for their fine support of the \$260,000 bond issue which enabled us to make application for and to receive an additional \$100,000 from the State. This \$100,000 was allotted Washington School District from the \$2,000,000 appropriated by the State Legislature and approved by the State Department of Education. This will permit us to do away with the temporary and obsolete buildings now in use.

We hope to be able to take care of all of our needs at this time, but due to the high cost of building, some of our plans may have to be scaled down. We think the funds will be sufficient, however, to take care of all pupils in three large centers.

### WASHINGTON HIGH SCHOOL

There are two parts to the high school addition: one to provide needed classrooms, and the other to enlarge the gymnasium to a 1,200 seating capacity with additional shower and locker rooms. Public rest rooms will be added to the present gymnasium facilities.

Ten new elementary classrooms will be connected with the high school to take care of the students now attending the portable building and Carey's Run; the overflow at

Nauvoo Grade School will be accommodated here.

The high school will receive additions to the Commercial Dept., the Industrial Arts Dept., and the Music Dept.

### FRIENDSHIP AREA

Friendship Grade Building will receive a new all-purpose room, 44x72, which may be used for social gatherings of the community, as well as a dining area for the new cafeteria. Adjoining this will be a completely equipped kitchen for serving hot lunches.

Five new classrooms will take care of students currently attending Sugar Grove, Elm Tree, and Buena Vista areas.

### DRY RUN AREA

Upper Dry Run School will be abandoned; these students will be taken to new rooms at Lower Dry Run School. The present building there will receive an all-purpose room, 43x69, to be used for public meetings of the neighborhood, as well as for the physical education program and dining room of the school. A new fully equipped kitchen will be part of the program. There will also be two new rooms to take care of the upper classes.

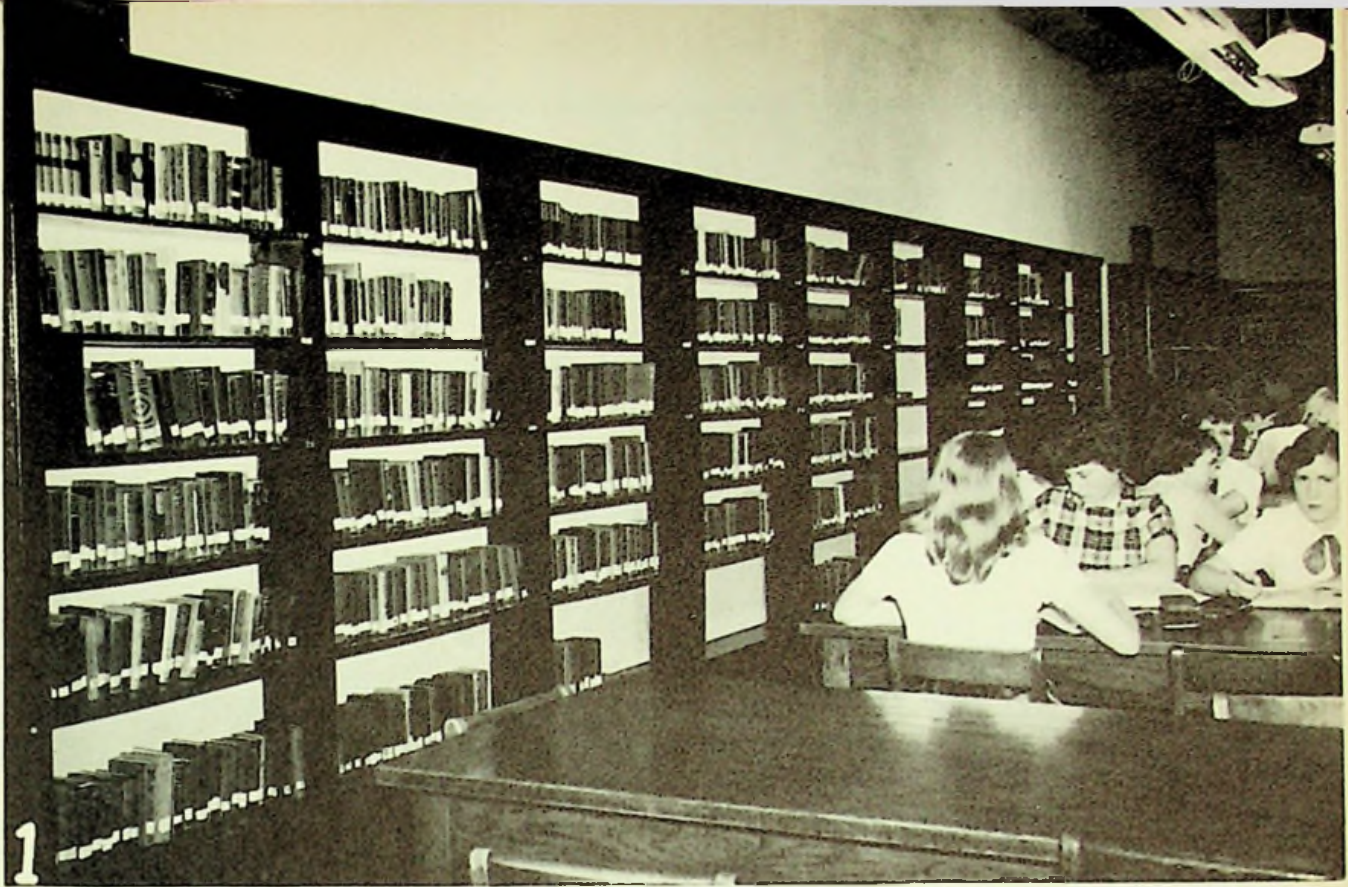
Eighth grade students will continue to attend the high school building in Nauvoo.

### DAVIS GROCERY



**BASEBALL TEAM**

*FIRST ROW, Left To Right:* Ralph Pick, Frank Litteral, Roger Lowe, Jack Andrews. *SECOND ROW:* Harold Mefford, Jack Hicks, Jack Stockham, Vernon Flannery. *THIRD ROW:* Kenneth Hamer, Charles Dixon, Richard Mowery, Paul Farley. *FOURTH ROW:* Jerry Bower, Robert Murphy, Tom Jones, Walt Jarrells.



1. This photograph shows a new thirty-six foot set of bookshelves that has been added to the library this year. It also pictures some of the 5,000 new library books bought during the school year. 2. Mr. Reynolds, Custodian. 3. Mr. Calver, Engineer. 4. Mr. Pistole, Custodian.

DRINK

**COCA-COLA**

IN BOTTLES

**HAMILTON'S GARAGE**

Filling Station

Auto Painting and Restaurant



## NORMAN KITCHEN

General Auto Repair

Phone 7-0162

825 Fourth Street

Dial 2-4251

## JOHNSON'S AUTOMATIC HEATING

Coal—Gas—Oil Furnaces  
Oil or Gas Conversion Burners

2034 Robinson Ave.  
Dwain (Buck) Johnson      Portsmouth, Ohio

Comparison Proves Roberts' Values Greater

# ROBERTS

*The Diamond Store*

421 Chillicothe St.

## ATLAS FASHIONS

The style center of this area  
since 1895

## KIRBY'S FLOWERS

Gallia & Findlay Sts.

Portsmouth, Ohio

## PORTSMOUTH MOTORS, INC.

1112 Gallia Street

Portsmouth, Ohio

Compliments of

## PORTSMOUTH TELEPHONE CO.

## STANDARD OIL COMPANY

2nd and Madison Sts.

Portsmouth, Ohio

*"The Silver Store"*

**CARR'S JEWELRY STORE**

811 Gallia Street

PHONE 2-7571

**WEST END ELECTRIC CO.**

Electrical Contracting

R. J. Yuenger  
Owner

714 Tenth Street  
Portsmouth, Ohio

**W. L. WILHELM, Jeweler**

507 Chillicothe Street

PHONE 2-7851

**STAPLETON OFFICE SUPPLY CO.**

Stationers                      Office Outfitters

School Supplies

829 Sixth Street

Portsmouth, Ohio

*"Courtesy and Service"*

Portsmouth Prescription Pharmacy

**WURSTER DRUG CO., INC.**

*The Rexall Store*

Public Phone  
3-3521

Prescription Dept.  
Phone 2-1581

419 CHILLICOTHE STREET

*"Save With Safety"*

*"Over 54 years of faithful service"*

**STAHLER'S DRUGS**

*"The Drugstore of Courtesy"*

**RICHARD A. BROWN**

Building Contractor

West Portsmouth, Ohio      Phone 7-4621

**WILLIAMS' GROCERY**

Fresh Fruits, Meats, and Vegetables

Free delivery on all orders

Sugar Grove                      Phone W. Ports. 2677

**DEVOSS  
and  
DONALDSON**

**Architects**

NATIONAL BANK BUILDING

PORTSMOUTH, OHIO

**The  
HARSHA-JOHNSON  
INSURANCE COMPANY**

All kinds of insurance and surety bonds

TELEPHONE 2-2731

M17-20 Masonic Temple Building

PORTSMOUTH, OHIO

**FERGUSON RESTAURANT**

232 Second Street

Portsmouth, Ohio

**DONALD T. DILLON  
INSURANCE AGENCY**

**FIRE AUTO BONDS**

202 MASONIC TEMPLE BUILDING

PHONE 2-7181

PORTSMOUTH, OHIO

A tribute to your  
GOOD TASTE



CLOTHES

**THE CRITERION**

*"the men's shop"*

Portsmouth, Ohio

Compliments of

**HERFF-JONES COMPANY**

ROBERT BURKART — Representative

*"Printers the Modern Way"*

**COMPTON ENGRAVING & PRINTING**

1412 THIRD STREET

PHONE 3-1911

# **HENRY OBERLING MOTOR COMPANY**

**DODGE — PLYMOUTH — PASSENGER CARS**

**DODGE TRUCKS**

# **LOWE'S QUICK SERVICE COAL COMPANY**

**10th and Hutchins**

**Dial 3-3711**

**BEST GRADES WEST VIRGINIA COALS**

**Lump, Egg, Stove and Nut**

**DOMESTIC OR COMMERCIAL**

**Stoker Coal For Any Type Stoker**

**LOWEST PRICES NOW**

