



THE

Senatorian

'56

The 1956 Senatorian

OF PORTSMOUTH WEST HIGH SCHOOL, WEST
PORTSMOUTH, OHIO

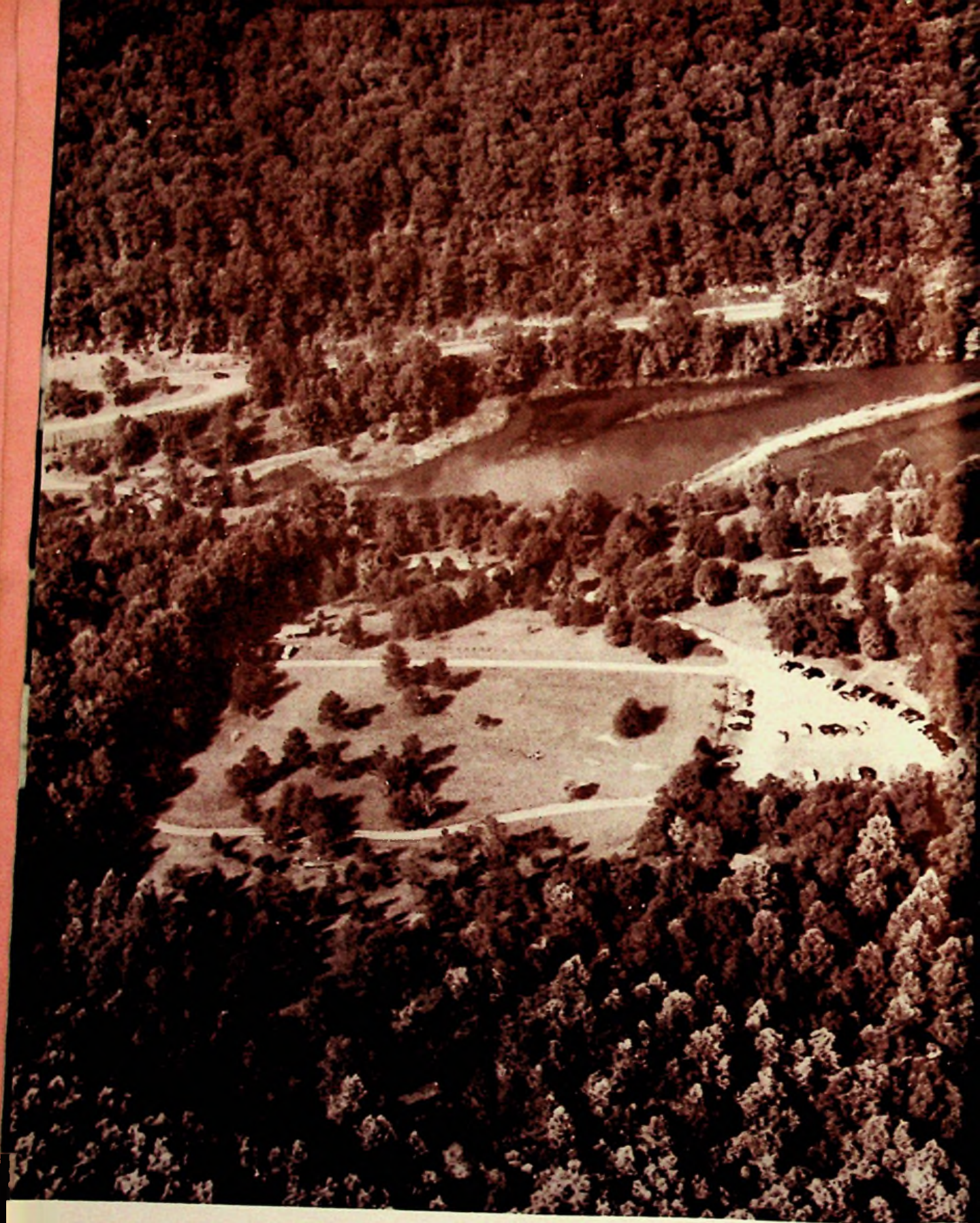
Presents



. . . *Evening*



The
Seasonal
Activities
Of A
School Year






. . . *Fall*



. . . Winter



. . . *and Spring*



TABLE OF CONTENTS

SENIORS	11
BAND	28
FOOTBALL	33
HOMECOMING QUEEN	42
SENIOR CLASS PLAY	44

* * *

UNDERCLASSMEN	47
JUNIORS	48
SOPHOMORES	52
FRESHMEN	56
EIGHTH GRADE	68
BASKETBALL	67

* * *

FACULTY AND ADMINISTRATION	78
ACTIVITIES	85
SCHOOL LIFE	98
SNAPSHOTS	107
ADVERTISING	114

THE 1956 SENATORIAN STAFF

Co-Editors	Connie Jayne Walter Partlow
Business Manager	Sue Williams
Photographer	Roger Bridwell
Typists	Mary Lou Martin Delores Fields
Administration	Virginia Book
Classes	Royal Watson Don Horsley
Sports	John Gayhardt
Advertising	Joe Lauder Mr. Snook
Advisor	Mrs. Hopkins

ACKNOWLEDGEMENTS

The Senatorian Staff would like to acknowledge the people who have helped them to make a better book through their cooperation:

Mr. LeRoy Compton, of the Compton Engraving and Printing Company, for his helpful criticism of the layouts.

Mr. John Hyland, for taking and printing several pictures for us at the last minute.

Mr. John Mullaney, of the Osborne Studio, for his advice on arrangements of class pictures.

Mrs. Mary Gillette, for her courtesy when we needed the typewriters to meet our deadlines.

Mr. William F. Snook, for his enthusiasm in helping with the selling of ads.

The faculty and students, for their efforts, understanding, and patience.

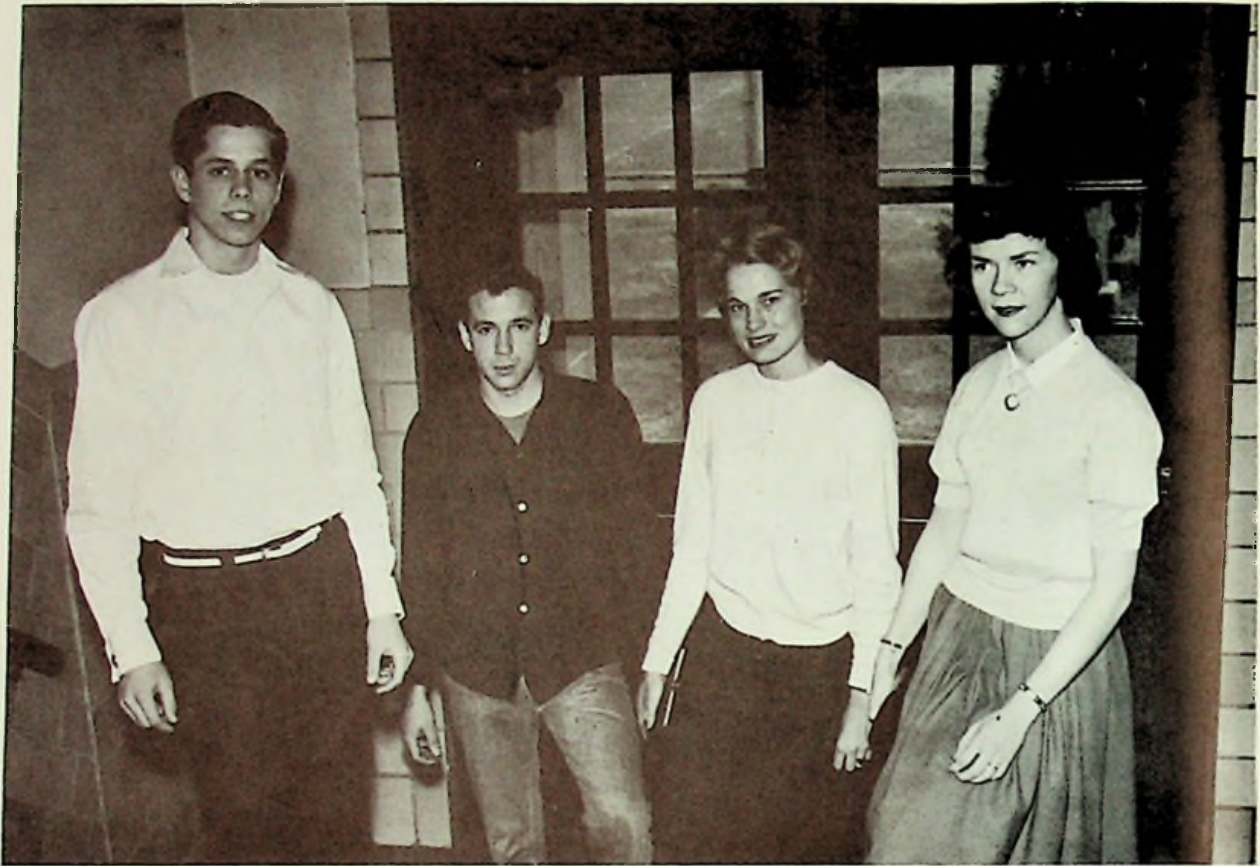
Falltime





ROW ONE: Virginia Book, Katharine Beekman, Connie Jayne, Sue Williams. ROW TWO: Jerry Hopkins, Gary Knauff, Joe Meade, Royal Watson.

These happy Seniors are entering Portsmouth West for their last year. They are completing a wonderful and successful four years of high school. From the day that they entered their Freshman year they have enjoyed all of the activities and will always have unforgettable memories of these years.



LEFT TO RIGHT: Howard, Byrd, Schweinsberg, Harrison

SENIOR CLASS OFFICERS

PRESIDENT	Glenn Howard
VICE PRESIDENT	Martha Schweinsberg
SECRETARY	Don Byrd
TREASURER	Charlotte Harrison

CLASS MOTTO: This Far and Farther
CLASS COLORS: Blue and White
CLASS FLOWER: Yellow Rose
CLASS ADVISORS: Mrs. Harper and Mr. Hairston

SENIORS



JOYCE ANN BASFORD
"Jo"

Home Economics

English Club, 1, 2, 3; Scholarship Team, 1, 2, 3, 4; New Life Club, 2, 3; Girls Glee Club, 1, 3, 4; Home Ec. Club, 2, 3, 4; Girls Athletic Club, 1; Junior Class Play; Senior Class Play; Pep Club, 3, 4; Minstrel, 4; Spring Festival, 1, 3, 4; Newspaper Staff, 4; Voice of Democracy, 4.

KATHARINE JANE BEEKMAN
"Brownie"

College Prep

Latin Club, 1, 2; English Club, 1, 2, 3; Scholarship Team, 1, 2, 3, 4; Math Club, 1, 2, 3; Honor Society, 3, 4; New Life Club, 1, 2, 3, 4; Chemistry Club, 4; Science Club, 1, 2, 3, 4; Mixed Chorus, 1; Band, 2, 3; Junior Class Play; Class Officer, 3; Prom Committee, 3; Librarian, 1.



LILLIAN LORETTA ADAMS
"Lil"

Commercial

English Club, 1, 3; New Life Club, 4; Mixed Chorus, 1, 2, 3, 4; Senior Class Play; Pep Club, 4; Minstrel, 2; Spring Festival, 1, 3; Librarian, 2, 3, 4; Newspaper Staff, 4.

ROBERT THOMAS APLEGATE
"Bob"

Industrial Arts

Chemistry Club, 4; Pep Club, 4; Industrial Arts Club, 1, 2, 3, 4.



VIRGINIA LEE BOOK
"Jenny"

Commercial

English Club, 1, 2, 3, 4; Scholarship Team, 1, 2, 4; Math Club, 1, 2, 4; Honor Society, 3, 4; Girls Athletic Club, 1, 2; Annual Staff, 3, 4; Class Officer, 3; Prom Committee, 3.



ROGER BRIDWELL
"Rog"

Industrial Arts

Annual Staff, 1, 2, 3, 4; Industrial Arts Club, 1, 2, 3.

SENIORS



LORETTA MAE BROWN
"Brownie"

Commercial

English Club, 1, 2, 3, 4; Scholarship, 1, 2, 4; Honor Society, 4; New Life Club, 1, 2; Junior Class Play; Senior Class Play; Class Officer, 1; Pep Club, 2, 3, 4; Football Queen, 4; Football Queen Attendant, 3; Prom Committee, 3; Majorette, 2, 3.

RONALD KEITH BROWNING
"Squirrel"

Industrial Arts

Varsity Football, 3, 4; Reserve Football, 1, 2; W. Club, 4; Baseball Team, 4; Industrial Arts Club, 3, 4; Stage Crew, 4.

DONALD EDWIN BYRD
"Tweety"

Industrial Arts

Boys Chorus, 3, 4; Mixed Chorus, 3, 4; Band, 1, 2, 3; Senior Class Play; Junior Class Play; Class Officer, 4; Spring Festival, 2, 3, 4.

JAMES FRANKLIN CALDWELL
"Jim"

Elective



DONNA LOU CANTER
"Donna"

Commercial

English Club, 1, 2, 3, 4; New Life Club, 2, 3, 4; Girls Athletic Club, 1, 2; Chemistry Club, 4; Science Club, 1; Spanish Club, 2; Pep Club, 3, 4.

HERBERT DENNIS CONLEY
"Peanut"

Commercial

Golf Team, 2, 3, 4.

SENIORS

GARY LEE COOK
"Homer"

Commercial

Science Club, 4; Junior Class Play, 3; Varsity Football, 2, 3, 4; Reserve Football, 1; W. Club, 3, 4; Baseball Team, 3, 4.



ROSEMARY CROWE
"Rosemary"

Commercial

English Club, 1; Scholarship Team 1; Girls Athletic Club, 1, 2; Mixed Chorus, 3; Librarian, 1.



LINDA LOU DEEMS
"Clem"

Commercial

Clay High School, 1, 2; Mixed Chorus, 3.

DOROTHY M. EULETT
"Johnni"

Commercial

English Club, 1, 2; New Life Club, 3; Senior Class Play, 4; Pep Club, 3, 4; Newspaper Staff, 4.

DELORES FIELDS
"Delores"

Commercial

English Club, 1, 2, 3, 4; Scholarship Team, 1, 2, 3; Math Club, 2; Honor Society, 3, 4; Girls Athletic Club, 2; Mixed Chorus, 1; Annual Staff, 3, 4; Spring Festival, 1; Librarian, 4.



PAULA RAE FLOWERS
"Polly"

Commercial

English Club, 1, 3, 4; Honor Society, 3, 4; Band, 3, 4; Spring Festival, 3.

SENIORS



NORMA JEAN FLOYD
"Norma"

Commercial

Pep Club, 4; Portsmouth High, 1; East High, 2; Wheelersburg High, 3.



CAROLYN ANN FRALEY
"Carolyn"

Elective

Dupont High School, 1, 2, 3.

WADE T. FRAZIER
"Ted"

Industrial Arts

English Club, 3; Math Club, 2; Boys Chorus, 3, 4; Mixed Chorus, 3, 4; Junior Class Play; Senior Class Play; Class Officer, 1; Spring Festival, 3, 4; Industrial Arts Club, 1; Stage Crew, 4.



CRADDOCK BOWINGER FRYE
"Doc"

Industrial Arts

Boys Chorus, 2, 3; Mixed Chorus, 2, 3; Varsity Football, 2, 3; Reserve Football, 2; W. Club, 3; Prom Committee, 3; Industrial Arts Club, 1, 4; Stage Crew, 3, 4.



NORMAN LEE GAMBILL
"Norman"

Industrial Arts

English Club, 3, 4; Reserve Basketball, 3, 4; Baseball Team, 3; Industrial Arts Club, 1, 2, 3, 4; Alexandria, Ohio, 1.



HERBERT CALVIN GARDNER
"Hurvin Herb"

Industrial Arts

English Club, 3; Boys Chorus, 4; Math Club, 2; Mixed Chorus, 3, 4; Varsity Basketball, 3, 4; Varsity Football, 1, 2, 3, 4; Reserve Basketball, 2; W. Club, 2, 3, 4; Baseball Team, 1, 2, 3, 4; Industrial Arts Club, 2, 3; Stage Crew, 3, 4.

SENIORS

JOHN MILTON GAYHARDT
"Johnny"

College Prep

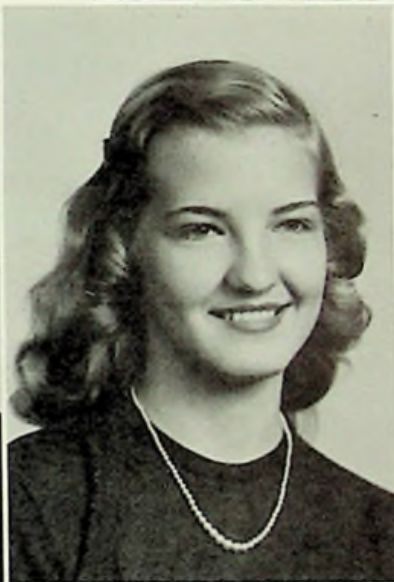
Latin Club, 1; English Club, 1; Scholarship Team, 1, 2; Boys Chorus, 3; Mixed Chorus, 3, 4; Annual Staff, 4; Class Officer, 1; Spring Festival, 3, 4; Basketball Statistician, 2, 3, 4; Baseball Score Keeper, 2, 3, 4.



THOMAS GEYER
"Tom"

Industrial Arts

Baseball Team, 3; Industrial Arts Club, 1.



DELORES JEAN HALL
"Delores"

Commercial

English Club, 2, 3, 4; Junior Class Play, 3; Senior Class Play, 4; Football Queen Attendant, 4; Yearbook Queen Attendant, 3; Majorette, 2, 3, 4.

NANCY CAROL HALL
"Nan"

Commercial

English Club, 1, 2, 3, 4; Girls Athletic Club, 1, 2; Pep Club, 4; Librarian, 2.

CHARLOTTE ANN HARRISON
"Tolly"

Commercial

New Life Club, 2, 3; Girls Glee Club, 3; Girls Athletic Club, 1, 2; Mixed Chorus, 3, 4; Class Officer, 4; Spanish Club, 2; Pep Club, 3, 4; Spring Festival, 3.



ROBERT HOOVER
"Bob"

Industrial Arts

Industrial Arts Club, 2; Stage Crew for class play, 3, 4.

SENIORS



JERRY HOPKINS

"Hoppy"

College Prep

Latin Club, 1, 2; English Club, 1, 2, 3, 4; Math Club, 1, 2, 3; Chemistry Club, 4; Science Club, 1, 2, 3, 4; Pep Club, 4; Varsity Football, 3, 4; Varsity Basketball, 3, 4; Reserve Football, 1, 2; Reserve Basketball, 1, 2; Senior Survey, 4.

PATRICIA LOUISE HORNIKEL

"Patti"

Commercial

Girls Glee Club, 3; Science Club, 4; Mixed Chorus, 3; Pep Club, 3; Notre Dame, 1, 2.

WILLIAM GLENN HORSLEY

"Bill"

College Prep

English Club, 3, 4; Scholarship Team, 2, 3; Senior Survey, 4.

GLENN HOWARD

"Glenn"

Commercial

English Club, 1, 2; Scholarship Team, 1; Math Club, 2; Boys Chorus, 3, 4; Science Club, 1; Mixed Chorus, 3, 4; Class Officer, 4; Pep Club, 4; Spring Festival, 3; Prom Committee, 3; Newspaper Staff, 3; Stage Crew for class play, 4.



JANET HOWE

"Janet"

Commercial

English Club, 1, 2, 3, 4; Girls Athletic Club, 2; Mixed Chorus, 3; Prom Committee, 3; Librarian, 4.

CAROL ANN JACKSON

"Carol"

College Prep

Latin Club, 1, 2; English Club, 1, 2, 3, 4; Scholarship Team, 3; Math Club, 1, 3; Honor Society, 3, 4; Chemistry Club, 4; Science Club, 1, 3, 4; Mixed Chorus, 1, 3; Minstrel, 1; Spring Festival, 1; Librarian, 2; Senior Survey, 4.



SENIORS

CONNIE SUE JAYNE

"Connie"

Commercial

English Club, 1, 2, 3, 4; Scholarship Team, 2; Girls Athletic Club, 1, 2; Annual Staff, 3, 4; Class Officer, 1; Spanish Club, 2; Pep Club, 3, 4; Prom Committee, 2.



LINDA LOU JONES

"Liz"

Commercial

English Club, 1, 2, 3, 4; Pep Club, 4; Newspaper Staff, 4.



RAYMOND JONES

"Hink"

College Prep

English Club, 3, 4; Science Club, 4; Spanish Club, 3, 4; Varsity Football, 4; Reserve Basketball, 1, 2; W. Club, 4; Industrial Arts Club, 3.

GARY LOREN KNAUFF

"Squiz"

College Prep

Latin Club, 1, 2; English Club, 1, 2, 3, 4; Scholarship Team, 1, 2, 3, 4; Math Club, 2, 3; Honor Society, 3, 4; Chemistry Club, 4; Science Club, 1; Class Officer, 3; Varsity Basketball, 2, 3, 4; Reserve Basketball, 1; Senior Survey, 4.

LOUELLA KNAUFF

"Lu"

Home Economics

English Club, 1, 2, 3; New Life Club, 1, 2; Home Ec. Club, 2, 3, 4; Girls Athletic Club, 1, 2; Mixed Chorus, 4; Pep Club, 4; Spring Festival, 4; Librarian, 4; Operetta, 4.

RONALD JOSEPH LAUDER

"Joe"

Industrial Arts

English Club, 1; Boys Chorus, 4; Mixed Chorus, 4; Senior Class Play; Annual Staff, 4; Pep Club, 3, 4; Spring Festival, 1, 4; Industrial Arts Club, 1, 2, 3; Stage Crew, 3; Operetta, 4.



SENIORS



JERRY LeROY LEWIS
"Stinkweed"

Commercial

Math Club, 2; Boys Chorus, 3, 4; Mixed Chorus, 3, 4; Junior Class Play, 3; Senior Class Play, 4; Spring Festival, 3, 4.



MARY LOU MARTIN
"Suzie"

Commercial

Latin Club, 1, 2; English Club, 1, 2, 3, 4; Scholarship Team, 2; Honor Society, 4; New Life Club, 1; Mixed Chorus, 1; Junior Class Play, 3; Annual Staff, 3, 4; Minsrel, 1; Spring Festival, 1; Librarian, 4.

HOWARD CONGER McCANN
"Hank"

Industrial Arts

Basketball Manager, 2, 3; Reserve Football, 2, 3; Industrial Arts Club, 1.

BEATRICE JOANN McGLONE
"Jo"

Commercial

Girls Athletic Club, 2; Band, 2, 3, 4; Pep Club, 3, 4; Spring Festival, 2, 3.



BETTY LOUISE MEADE
"Betty"

Home Economics

Girls Glee Club, 1; Home Ec. Club, 1, 2; Mixed Chorus, 3.



JOSEPH RICHARD MEADE
"Joe"

College Prep

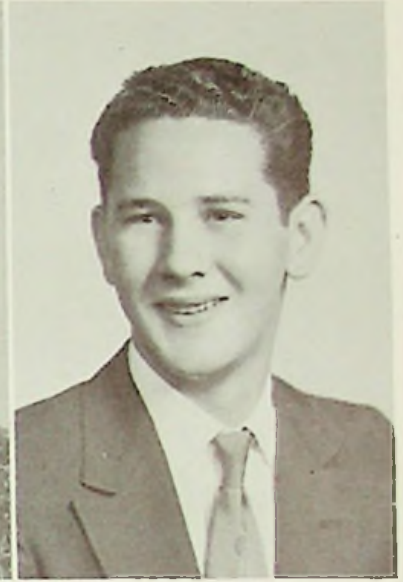
Latin Club, 1, 2; English Club, 1, 2, 3, 4; Scholarship Team, 1, 2, 3, 4; Math Club, 1, 2, 3; Honor Society, 3, 4; Chemistry Club, 4; Science Club, 1.

SENIORS

PHILLIP MELVIN
"Phil"

College Prep

English Club, 3, 4; Math Club, 3; Chemistry Club, 3; Latin Club, 1; Intramural Basketball, 1, 2, 3, 4.



BERNARD EUGENE MONK
"Rock"

Commercial

Boys Chorus, 3, 4; Mixed Chorus, 3, 4; Senior Class Play; Reserve Basketball, 1; Minstrel, 4; Stage Crew for class play, 4; String Band, 4.



RONALD MOWERY
"Ron"

Industrial Arts

Class Officer, 1, 2; Varsity Basketball, 3; Varsity Football, 3, 4; Reserve Basketball, 1, 2; Reserve Football, 1, 2; W. Club, 3, 4; Baseball Team, 1, 2; Industrial Arts Club, 1; Stage crew for class play, 3, 4.

RUSSELL E. MURTA
"Russ"

Commercial

English Club, 1; Math Club, 2; Science Club, 1; Pep Club, 4; Baseball Club, 4.

WALTER PARTLOW, JR.
"Pete"

Elective

Math Club, 1, 2; New Life Club, 2, 3; Annual Staff, 3, 4; Pep Club, 3, 4; Varsity Basketball, 3, 4; Reserve Basketball, 1, 2; W. Club, 4; Stage Crew for class play, 3.



BONNIE LEE PHILLIPS
"Bonnie"

Elective

Girls Glee Club, 1, 2; Mixed Chorus, 3, 4; Newspaper Staff, 3.

SENIORS



PAUL POLLARD
"Doc"

Industrial Arts

PATTY JEAN POSTON
"Pat"

Home Economics

Home Ec. Club, 1; Pep Club, 4; Portsmouth High School, 1, 2.

BETTY JANE RAYBURN
"Bobo"

Commercial

English Club, 1, 2; Home Ec. Club, 4; Mixed Chorus, 3, 4; Senior Class Play.

JUDITH LYNN RAYBURN
"Judy"

Commercial

Girls Glee Club, 2, 3; Mixed Chorus, 3; Junior Class Play; Pep Club, 2, 3; Spring Festival, 3; Valley High School, 1.



DONALD REYNOLDS
"Don"

Elective

Senior Class Play; Pep Club, 3, 4; Reserve Football, 1; Prom Committee, 3.



MARY LOU RICE
"Mary Lou"

Commercial

English Club, 1, 2; Girls Athletic Club, 2; Mixed Chorus, 1, 2, 4; Junior Class Play; Pep Club, 4; Minstrel, 1; Librarian, 3.

SENIORS

GERALDINE RUTH ROYCE
"Jerry"

Commercial

New Life Club, 3; Home Ec. Club, 3; Mixed Chorus, 1, 2, 3, 4; Junior Class Play; Senior Class Play; Pep Club, 4; Minstrel, 1, 2.

LOUIS ALLEN SCHEID
"Al"

Elective

English Club, 3; New Life Club, 4; Boys Chorus, 1, 2, 3, 4; Chemistry Club, 4; Science Club, 1; Mixed Chorus, 1, 2, 3, 4; Band, 1, 2, 3, 4; Junior Class Play; Senior Class Play; Minstrel, 1, 4; Spring Festival, 2, 3, 4; Prom Committee, 3; Newspaper Staff, 3, 4; Statistician, 2, 3, 4; Drum Major, 3, 4; Operetta, 4.



SHELBY JEAN SCHILTZ
"Fishy"

Commercial

New Life Club 3; Girls Athletic Club, 2; Mixed Chorus, 2; Pep Club, 3.

MARTHA JANE SCHWEINSBERG
"Mert"

Commercial

English Club, 2, 3, 4; Class Officer, 4; Pep Club, 2, 3, 4; Portsmouth High, 1, 2; Newspaper Editor, 4.

RONALD L. SHEPHERD
"Ron"

Industrial Arts

Science Club, 1; Pep Club, 3, 4; Varsity Football, 2, 3, 4; Reserve Football, 1; Reserve Basketball, 1; W. Club, 2, 3, 4; Industrial Arts Club, 2, 3.

NORRIS EUGENE SHIVELEY
"Gene"

Industrial Arts

Boys Chorus, 3, 4; Mixed Chorus, 3, 4; Minstrel, 1, 4; Spring Festival, 3, 4; Industrial Arts Club, 2, 3, 4; Operetta, 4.



SENIORS



SHIRLEY ANN SHIVENER
"Shirl"

Commercial

English Club, 1, 2, 3, 4; Home Ec. Club, 1, 2;
Senior Class Play, 4.



CAROLENE SUE SMITH
"Suzie"

Commercial

English Club, 1, 2; New Life Club, 1; Home
Ec. Club, 1, 2, 3; Girls Athletic Club, 1, 2;
Band, 3, 4; Pep Club, 3, 4.

DELORES ANN SMITH
"Smitty"

Home Economics

New Life Club, 2, 3; Girls Glee Club, 1; Home
Ec. Club, 1, 2, 3; Band, 2, 3, 4; Spanish Club,
2; Pep Club, 3; Spring Festival, 3.



LOUISE FLORENE SMITH
"Blondie"

Commercial

English Club, 1.



DAVID LEE SOWARDS
"Dave"

Industrial Arts

English Club, 3.



DAVID EARL SPARKS
"Dave"

Industrial Arts

Industrial Arts Club, 2.



SENIORS

JACQUELINE RUTH SPARKS
"Jackie"

Commercial

English Club, 3; Girls Glee Club, 1; Senior Class Play, 4; Class Officer, 2; Cheerleader, 3.



JOHN ROBERT STATEN
"Bob"

College Prep

New Boston, 1, 2; Boys Chorus, 3; Chemistry Club, 4; Science Club, 4; Mixed Chorus, 3; Pep Club, 4.



ROYAL WATSON
"Bud"

Commercial

Math Club, 2; Boys Chorus, 3; Mixed Chorus, 3; Annual Staff, 4; Pep Club, 4; King High, Texas, 1; McDermott High, 1; Prom Committee, 3.

WILMA PAULINE WEDEBROOM
"Polly"

Home Economics

English, 2, 3; New Life Club, 2, 3; Home Ec. Club, 2, 3, 4; Girls Athletic Club, 2; Pep Club, 4; Librarian, 1, 2, 3.

MARIANNE WESSEL
"Blondie"

Commercial

English Club, 1, 2, 3, 4; New Life Club, 1, 2, 3; Girls Glee Club, 1, 2; Girls Athletic Club, 2; Mixed Chorus, 1, 2, 3, 4; Senior Class Play Prompter, 4; Pep Club, 3, 4; Minstrel, 1, 4; Spring Festival, 1, 2; Newspaper Staff, 4; Girls Octet, 2; Operetta, 4.



ZELMA IRENE WILBURN
"Butchie"

Commercial

Home Ec. Club, 4; Pep Club, 3, 4; Librarian, 3.

SENIORS



MARY SUE WILLIAMS
"Suzie"

Commercial

English Club, 1, 2, 3, 4; New Life Club, 2;
Girls Athletic Club, 1, 2; Annual Staff, 3, 4;
Class Officer, 2; Spanish Club, 2; Pep Club,
3, 4; Prom Committee, 3; Queen's Attendant—
Football, 2; Cheerleader, 2, 3.



JOHN RICHARD WILSON
"John"

Industrial Arts

Boys Chorus, 3; Science Club, 2; Mixed Cho-
rus, 3; Industrial Arts Club, 2.

RUSSELL WILSON
"Russ"

3½ years service credit; Basketball Manager,
4.

BARBARA JEAN YOUNG
"Barb"

Home Economics

English Club, 1, 4; Home Ec. Club, 2; Mixed
Chorus, 3.



SENIOR'S FINAL ACTIVITIES

April 13—Trip to Washington D. C.

May 5—Trip to Cincinnati, Ohio

May 6—Baccalaurate

May 8—Last Day of School

May 12—Commencement

SNAPSHOTS



B. Young, B. Meade, C. Smith, Z. Wilburn talking over the "gossip" of school.



P. Partlow presenting Mr. Hairston with a gift from the basketball team.



P. Poston, G. Knaufl, B. Applegate, L. Deems taking time out for lunch.



These girls are getting ready to go back to class!



T. Partlow, J. Meade, R. Jones, H. McCann posing for the picture.



C. Harrison, M. Schweinsberg talking before school.



Kncuff



D. Hall



Hamilton



Kinolau



Overstreet



Vaughn



W. Hall



Kennard



Howard



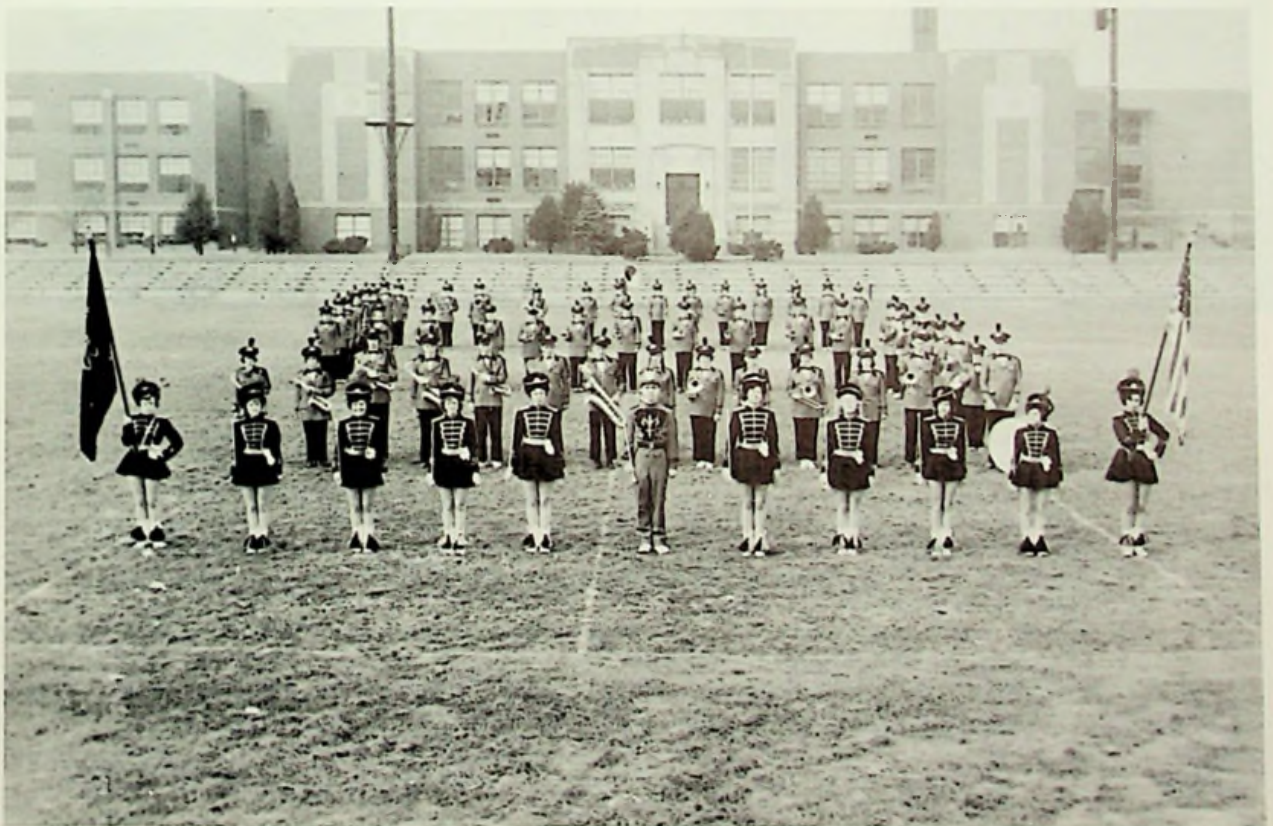
Braden



Drum Major, Alan Scheid



Mr. Gillette, band director



The band forms the letter "S" with the West High School in the background.



ROW ONE: Alice Kinolau, Delores Hall, Wilma Hall, Mary Ann Knauft, Carolyn Braden, Allen Scheid, Barbara Vaughn, Wanda Howard, Nancy Hamilton, Carolyn Kennard, Carolyn Overstreet.
 ROW TWO: Sandra Morgan, Sue Monk, Mary Lou Rankin, Sharon Perry, Marcene Collier, Donna Brickey, Judy Anderson, Virginia Varney, Paula Flowers, Linda Meade, Sidney Madden.
 ROW THREE: Ruth Browning, Joanne McGlone, Harold Graham, Sue Conley, Dorothy Kirkendall, Tom Woods, Patty Yost, Louis Grice, Carolyn Rapp, Kay Wellman, Sue Brown, Janet Byrd, Marilyn Lester, Carolyn Sheppard, Mary Ann Rollins.
 ROW FOUR: Fred Shupert, Jerry Biggs, Donna Dougherty, Fred Martin, Clarence Craycraft, Jack Rose, Carolyn Smalley, Frances Callihan, Carolene Smith, Delores Smith.
 ROW FIVE: William Shinkle, David Wolery, Roger Nibert, Carl Lewis, Mary Ann Newman, Randall McKinney, Ruth Warnock, Donald Horsley, Tom Ross, Robert Love, Roger Floyd, Ronald Newman, Janet Hall, Ruth Conley, Ann Roth, not pictured, Patty Journey.



PORTSMOUTH WEST HIGH SCHOOL BAND

During the football season, the band, under the capable direction of Mr. Dale Gillette, presented many clever and amusing stunts before the eyes of interested spectators. In these presentations the entire organization showed its ability in skillfully executing a variety of acts.

The band, however, would not be complete without the twirling batons of the drum major and majorettes.



Sections of the band at rehearsal.

SOC



Mr. James Warren, President of the Southern Ohio Conference, awards the football trophy to Co-Captains Ronald Mowery and Jerry Hopkins while Coach Everling watches.

CHAMPS

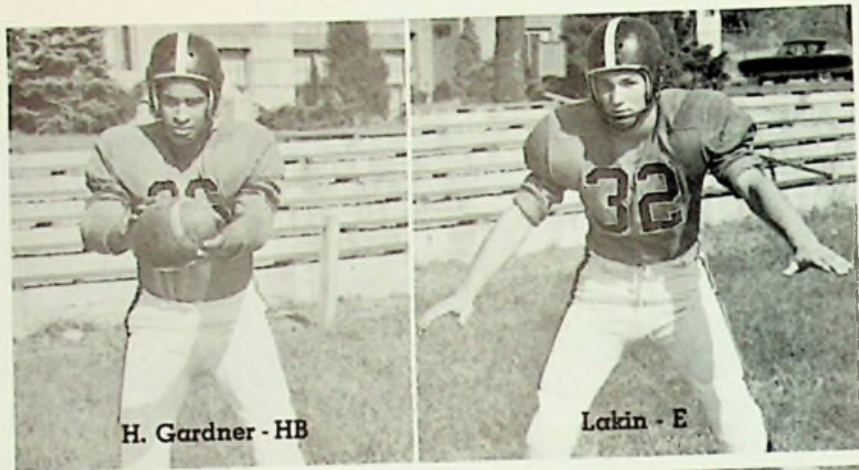
VARSITY FO



ROW ONE: Ronald Shepherd, Rodney Gardner, Roy Logan, Gary Cook, Ronald Mowery, Jerry Hopkins, Don Johnson, Lee Tieman, Jerry Hart. ROW TWO: Mr. Staggs, Jerry Smith, Jerry Davis, Sam Bean, Don Pontius, Herbert Gardner, Duane Wilson, Ottis Sapp, Bill Sweeney, Ron Browning, Mr. Everling. ROW THREE: Charles Stamper (Manager), Herman Lakin, Tom Partlow, Henry Robinson, George Edmisten, Ray Jones, Windell Bailey, Virgil Johnson, Charles Leedy, Bill Hornikel (Manager).

FOOTBALL TEAM





H. Gardner - HB

Lakin - E



Roark - HB



Wilson - E



R. Jones - HB



Johnson - FB



Belford - G



Sapp - T



[unclear] - G



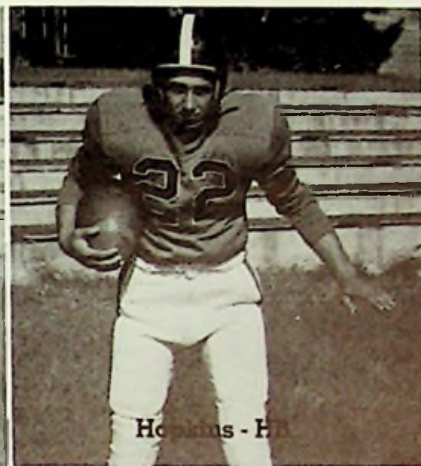
Bean - E



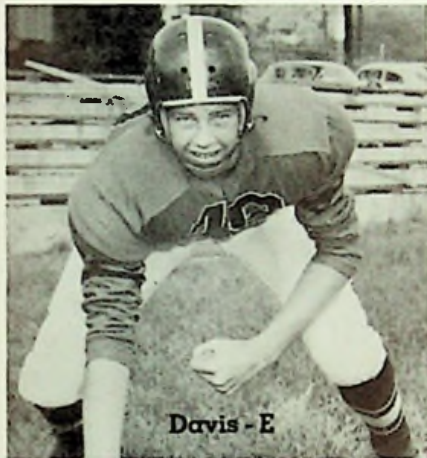
R. Gardner - HB



Mower - HB



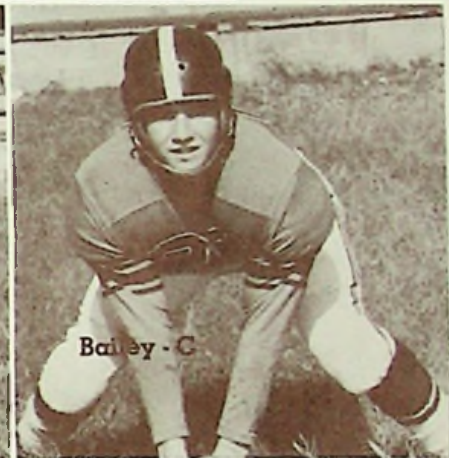
Hopkins - HB



Davis - E



Shepherd - C



Bailey - C



29



Hart - QB



Johnson - G



Pontus - G



1





Cook - T



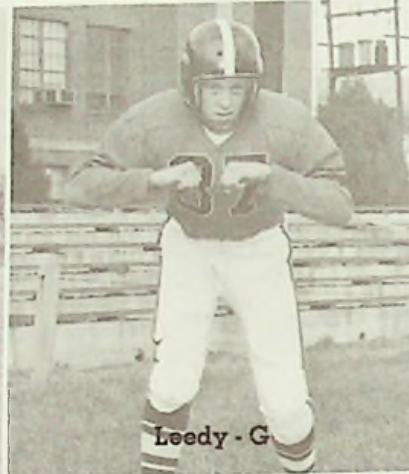
Boyd - E



Logan - G



Joseph - HB



Leedy - G



Welch - E



McGue - G



Watts - HB



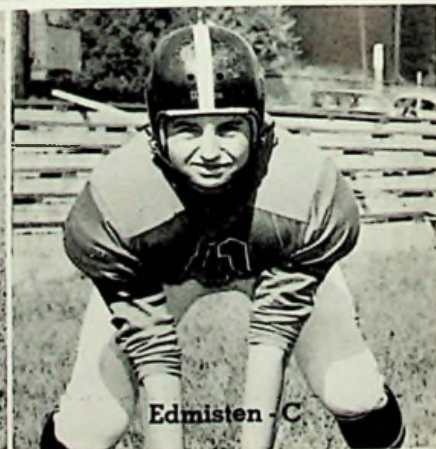
K. Jones - HB



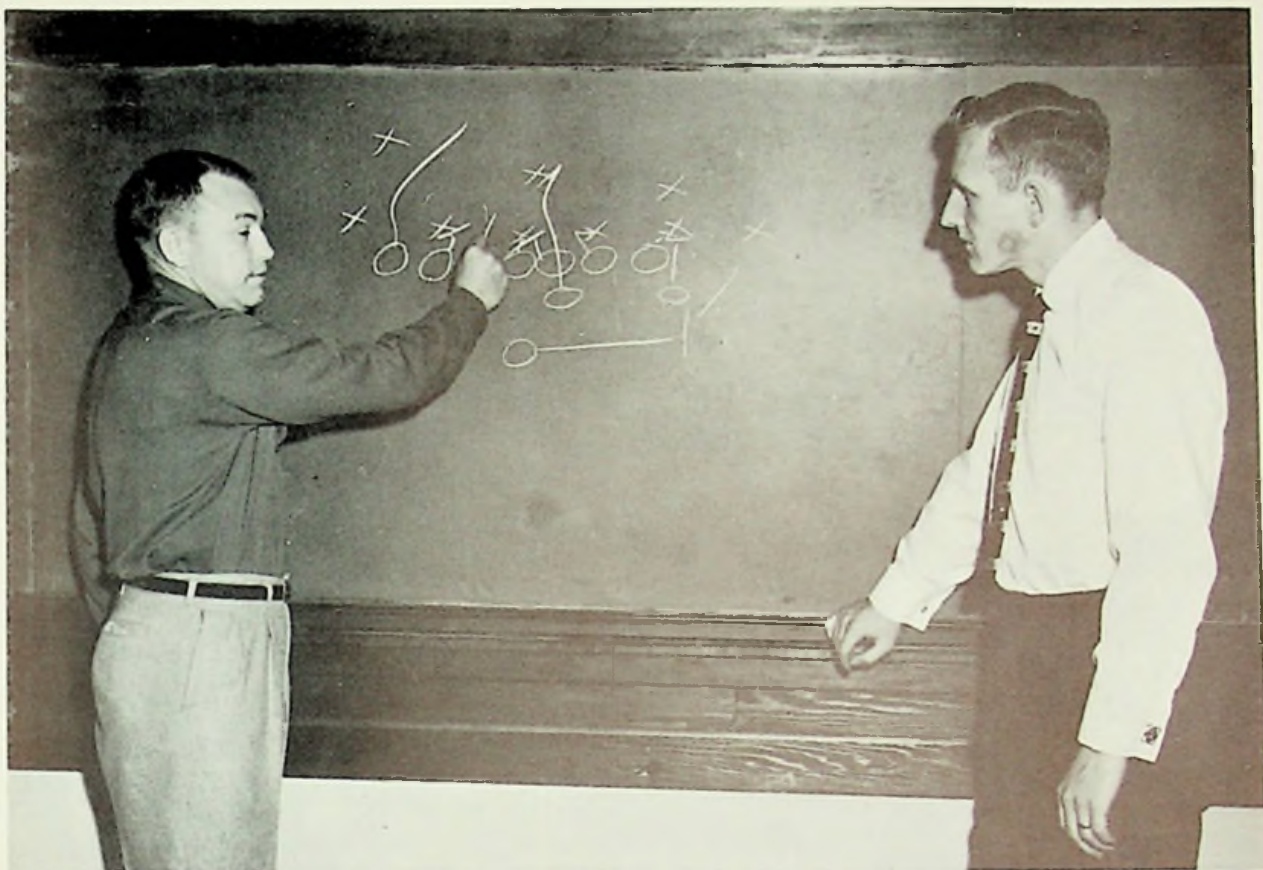
Tieman - HB



[Name] - QB



Edmisten - C



Coach Monk Everling discusses a play with assistant coach Don Staggs.



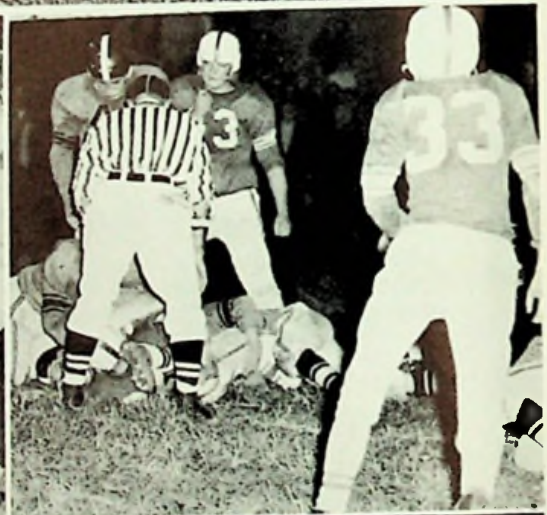
ALL-STAR PLAYERS

KNEELING: H. Lakin, J. Hopkins, R. Logan, Honorable Mention in S. O. C. STANDING: R. Mowery, H. Gardner, G. Cook, All-Star Players in S. O. C.



MANAGERS AND STATISTICIAN

KNEELING: Charles Stamper and Bill Hornikel.
STANDING: John Gayhardt.



WEST IN ACTION

1955 FOOTBALL SEASON

The football team of '55 showed its strength early in the season by defeating Wurtland 31-0. With the physical shape and mental attitude of the team at its peak, they proceeded to down Notre Dame, Waverly, Wheelersburg, New Boston, East, and Rock Hill. Although winning seven of the nine games the defeats came from two highly rated teams in the State.

Again West has captured the S. O. C. crown. We, of the Annual Staff, wish to congratulate the football team and coaches for a very successful season.

1955 SCHEDULE

West	31	Wurtland	0
West	28	Notre Dame	0
West	20	Coal Grove	25
West	12	Waverly	6
West	21	Oak Hill	32
West	18	Wheelersburg	0
West	12	New Boston	7
West	25	East	0
West	60	Rock Hill	6



HOMECOMING
ATTENDANTS



Delores Hall
Senior



Sandra Delong
Junior

Sharon Howe
Freshman



Nancy Hamilton
Sophomore





Lovely Loretta Brown, Homecoming Queen, chosen by the football team.

HILLBILLY WEDDIN'

BY THE SENIOR CLASS

This hilarious comedy, based on husband-hunting, took place in the main room of the Belsnickle mountin cabin, back in the hills of Kentucky. When Maw broke the news to Paw that Juney Lou was getting married, Maw came to the conclusion that Ceelie and Bonnie Mae would have to have a husband first since they were older; otherwise they might never find one. This is the beginning of everybody's troubles.

Some of the main incidents included:

Snakes getting loose, Ceelie's taking a bath, a feud being started, disguises, faking snake bites, being locked up in a pigpen, and finally, Ceelie's finding a husband.

The cast, directed by Mr. Giles, was:

MAW BELSNICKLE	Jackie Sparks
PAW BELSNICKLE	Don Byrd
JUNEY LOU	Joyce Basford
CEELIE	Jerry Royce
BONNIE MAE	Loretta Brown
FOUR BELSNICKLE	Betty Rayburn
FIVE BELSNICKLE	Dorothy Eulett
SIX BELSNICKLE	Shirley Shivener
RONALD MAXWELL	Don Reynolds
LUCY MAXWELL	Delores Hall
OBEEY	Allen Scheid
CHIZ UPSCHLAGER	Bernard Monk
COUSIN ZEKE	Ted Frazier
COUSIN JOE	Joe Lauder
REVEREND	Jerry Lewis



PLAY CAST

SEATED: S. Shivener, B. Rayburn, D. Eulett. STANDING: T. Frazier, J. Lauder, D. Byrd, J. Sparks, B. Monk, D. Hall, D. Reynolds, L. Brown, J. Royce, A. Scheid, J. Lewis, J. Eastford.



DINNER IS SERVED!!

Maw and Paw Belsnickle and their six daughters dine in their own hillbilly fashion.



MAKE-UP TIME!

Mr. Giles adds the finishing touches to the make-up of Jackie Sparks while Don Byrd watches.

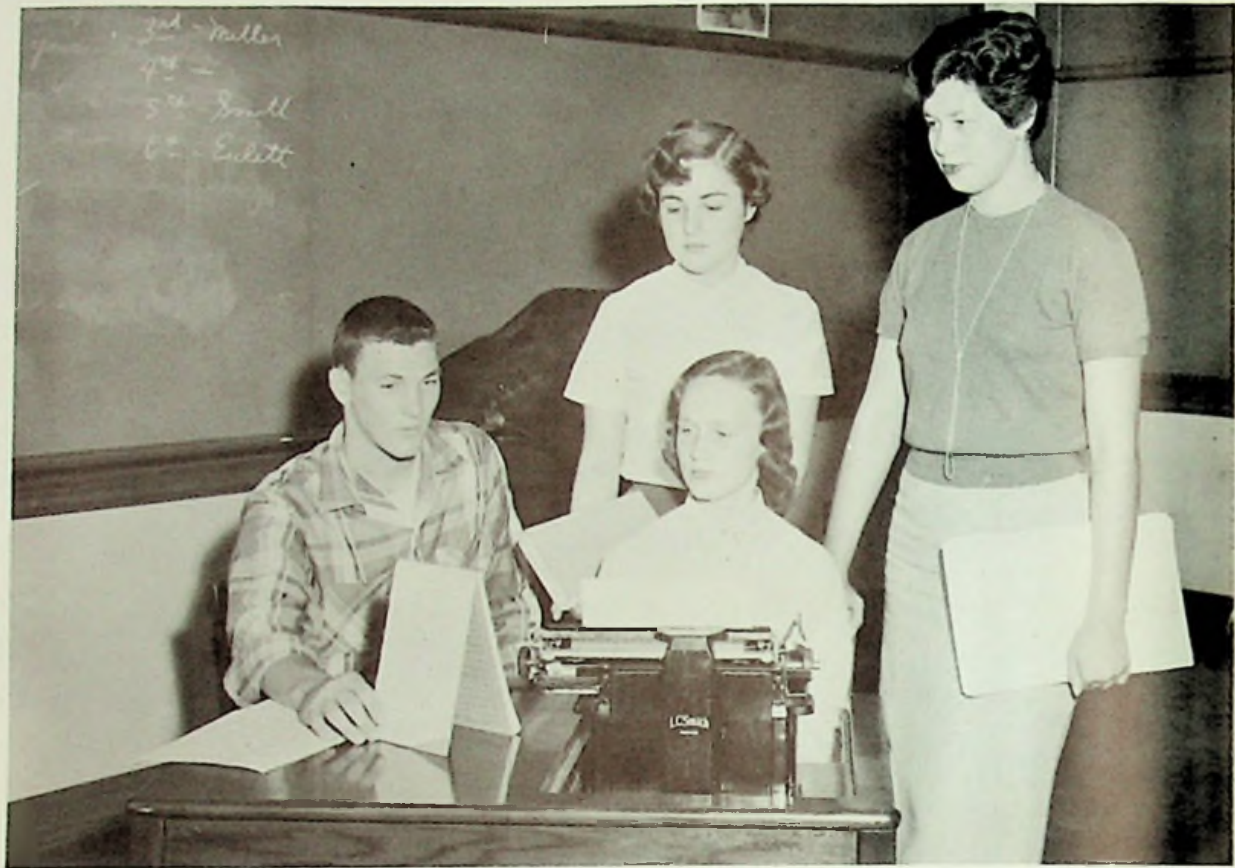


STAGE CREW AND PROMPTERS

SEATED: Marianne Wessel, Lillian Adams. STANDING: Bob Hoover, Jerry Hopkins, Ronald Browning, Craddie Frye, James Caldwell, Herbert Gardner, Glen Howard, Mr. Giles.

Wintertime





SITTING: Lakin, Kessinger. STANDING: Rollins, Vaughn.

JUNIOR CLASS OFFICERS

PRESIDENT	Barbara Vaughn
VICE PRESIDENT	Herman Lakin
SECRETARY	Kay Kessinger
TREASURER	Mary Ann Rollins

ADVISORS

Mrs. McClurg and Mr. Reiser

JUNIORS



ROW ONE: Shirley Cooper, Carolyn Braden, Paula Chapman, Bill Craiger, Mike Brescia. ROW TWO: Jean Cox, Frances Callihan, Carol Collier, Betty Adkins, Ruth Bloomfield, Dale Crabtree. ROW THREE: Harold Boling, Jack Boyd, Bill Coburn, Jack Bridwell, Gerald Belford.



ROW ONE: Mary Hall, Shirley Hall, Donna Jarvis, Judy Cummings, Marilyn James, Mary Galloway. ROW TWO: Sandra DeLong, Barbara Dever, Loretta Dooley, Judy Hall, Larry Jones. ROW THREE: Patty Journey, Jerry Hart, Mike Haffner, Clarence Craycraft, Douglas Hall, Roger Floyd.

JUNIORS



ROW ONE: Carless Lewis, Frank Logan, George Malone, Clyde Lyons, Ronald King, Gary Kenyon.
 ROW TWO: Coreen Lancaster, Judith McNutt, Juanita Middleton, Kay Kessinger, Rebecca Kincaid.
 ROW THREE: Jim Madden, Herman Lakin, Paul Long, Roy Logan, Tom Keyser, Bill Meyers.



ROW ONE: Robert Nichols, Phyllis Pollard, Mary Neal, Akla Penn, Mary Morrow, Dorothy Newman.
 ROW TWO: Bonnie Burphy, Judy Newman, Laura Riggsby, Evelyn Riffe, Pauline Morrison.
 ROW THREE: George Perry, Don Pontius, Joe Reiter, Roger Nibert, Chester Rayburn, Dennis Monk.

JUNIORS



ROW ONE: Patricia Schaffer, Fred Shupert, Robert Roark, Ralph Simpson, Janet Scott. ROW TWO: Mary Ann Rollins, Anne Ross, Carolyn Sheppard, Roberta Royal, Faye Sibrel, Edith Skaggs. ROW THREE: Bill Rose, David Russell, Bill Rose, Ottis Sapp, Charles Roberts.



ROW ONE: James Stevenson, Beatrice Stevens, Barbara Vaughn, Robert Wallace, David Wolery. ROW TWO: Ruth Warnock, Louella Smith, Mona Woten, Patricia Yost, Shirley Swearingen, Betty Vanderpool. ROW THREE: Edward Summerfield, Donald Thacker, Charles Smith, James Slaughter, Kenneth Vaughters.



LEFT TO RIGHT: Overstreet, Fields, Johnson, Knauff.

SOPHOMORE CLASS OFFICERS

PRESIDENT	Eleanor Johnson
VICE PRESIDENT	Carolyn Overstreet
SECRETARY	Geraldine Knauff
TREASURER	Janet Fields

ADVISORS

Mrs. Yonovitz and Mr. Holmes

SOPHOMORES



ROW ONE: Ruth Browning, Janet Byrd, Charlotte Berry, Patty Besco. ROW TWO: Mary Adkins, Wynona Brickey, Sue Brown, Jeannie Bower, Sue Barber. ROW THREE: Shirley Caudill, Patsy Abrams, Patricia Bussa, Kathleen Adkins, Orville Adkins, Sharon Birchfield. ROW FOUR: James Adkins, Wendel Bailey, Bill Bayes, Sam Bean, Bobby Boling, Jerry Biggs, Howard Boatman



ROW ONE: Janet Hall, Donna Day, Janet Fields, Phyllis Gammon, Joyce Dials, Lois Deems. ROW TWO: Betty Cooper, Virginia Evans, Wilma Hall, Diana Felty, Nancy Hamilton, Anna Galloway. ROW THREE: Alice Franks, Clayton Conley, Barbara Douthat, Douglas Hart, Ronald Hamilton, Jane Dickson. ROW FOUR: Rodney Gardner, Harold Graham, Jerry Hall, Jerry Davis, Donna Dougherty, George Edmisten.

SOPHOMORES



ROW ONE: Marilyn Lester, Mary Lake, Charles Leedy, Edwin Jackson, Donald Johnson. ROW TWO: Carolyn Kennard, Carolyn Havens, Sandy Hartstein, Wanda Howard, Mary Knauff, Geraldine Knauff. ROW THREE: Eleanor Johnson, Alice Kinolau, Freda Howell, Anna Holt, Christine Horner. ROW FOUR: Bill Hornikel, Phillip Kirkendall, Virgil Johnson, Hyrm Hilderbrand, Donald Horsley, Keith Jones.



ROW ONE: Charlotte McGlone, Sue Monk, Mary Newman, Margaret O'Dell, Phyllis Long, Gwendolyn Meade. ROW TWO: Tony Malone, Mary McNult, Carolyn Overstreet, Sandra Morgan, Judy McCall, Evelyn Moore. ROW THREE: Jack Loless, Ronald Newman, Judy Madden, Tom Miller, Bob Love, Mike May. ROW FOUR: Frank Lewis, Ellsworth McCann, James McNeil, Eddie Maggard, Paul Mangus, Saint Paul.

SOPHOMORES



ROW ONE: Kenneth Shupert, Jerry Piatt, Virginia Redoutey, Bonnie Reed, Sandra Roark. ROW TWO: Patty Royce, Mary Roe, Lawrence Shackelford, Beverly Price, Ann Roth, Doris Pick. ROW THREE: Lynn Roll, Richard Schackart, Tom Ross, Virginia Price, Mary Rankin. ROW FOUR: Nile Sanford, Henry Robinson, Bill Shinkel, Bill Schwamberger, Tom Partlow, Frank Peters.



ROW ONE: Kay Wellman, Joyce Speck, Janet Stegall, Betty Sparks, Charlotte Wilburn. ROW TWO: Gladys Sowards, Doris Webb, Joan Smith, Virginia Varney, Noisha Spurlock, Mary Webb. ROW THREE: Ted Smith, Jack Tyler, Duane Wilson, Charles Stamper, John Weaver, Lee Tieman. ROW FOUR: Wayne Wilson, John Welch, Larry Smith, Bill Sweeney, Roy Wallace, Jerry Smith.



LEFT TO RIGHT: Noel, Schroeder, Bradshaw, Kirsch.

FRESHMEN CLASS OFFICERS

PRESIDENT Linda Bradshaw
 VICE PRESIDENT Dennis Kirsch
 SECRETARY Garnet Noel
 TREASURER: Lynn Schroeder

ADVISORS

Mrs. Orlett and Mrs. Rolf

FRESHMEN



ROW ONE: C'Dora Addis, Arnold Bays, Norman Bradney, Norman Burchett, Linda Bradshaw, Judy Anderson. ROW TWO: Barbara Bolton, Juanita Bloomfield, Rebecca Crippen, Donna Brickey, Judy Blakeman, Mary Atkins, Ruth Conley. ROW THREE: Sharon Bice, Marcene Collier, Gary Callihan, Bob Boyd, Barbara Browning, Ruth Beekman. ROW FOUR: Robert Cline, William Bertram, Paul Adams, Frank Browning, William Amburgey, Kenneth Coleman, Nelson Breeze.



ROW ONE: Diana Fisher, Donna Felty, Betty Friend, Ann Crull, Freda Cummings, Sue Conley. ROW TWO: Gloria Gillum, Edith Evans, Howard Gammon, Serena Deaver, Dick Cook, Phyllis Crabtree, Ann Hamilton. ROW THREE: Richard Craycraft, Lola Gardner, Tom Conley, Ernest Hargis, Carol Deems, Maude Curnutte, Janice Gifford. ROW FOUR: Roberta Goddard, Louis Grice, Chester Easter, Neal Frazier, Paul Hargis, Gerald Davis, Eddie Givens.

FRESHMEN



ROW ONE: Ruth Ann Knauff, Judy Higgenbotham, Dottie Kirkendall, Judith Lauder, Eileen Ishmael, Carolyn Kepp. ROW TWO: Patricia Knittel, Sharon Hornickle, Kenneth Holsinger, Ida Johnson, Juanita Jordan, Sharon Howe. ROW THREE: Walter Hoover, Jack Jordan, William Hodge, Mike Kessinger, Donna Hazelbaker, Carolyn James. ROW FOUR: Gary Kitchen, Harold Kirk, Kenneth Joseph, Richard James, Dennis Kirsch, Carl Lewis, Robert Hileman.



ROW ONE: Donna Newman, Diana Mooney, Julia Morrow, Garnet Noel, Linda Meade, Marcella Lewis. ROW TWO: Carol Messer, Linda Meeker, Phyllis Moore, Carolyn Logan, Sharon McQuithy, Carolyn Nolan, Fred Martin. ROW THREE: Mae McGraw, Agnes Messer, Frances Osborne, Roger McGlone, George O'Neal, William Messer. ROW FOUR: Robert Middleton, Randall McKinney, James McGue, Sidney Madden, Larry McGlone, Jerry Morgan, Wayne Logan.

FRESHMEN



ROW ONE: Susan Reeg, Sue Rice, Cora Royal, Anna Ratcliffe, Carolyn Rapp, Sharon Perry.
 ROW TWO: Dale Shupert, Nettie Riley, Carolyn Smalley, Carolyn Perry, Betty Owens, Jack Rose,
 James Robinson. ROW THREE: Bill Shepherd, George Reynolds, Loudean Riffe, Phyllis Scott,
 David Sissle, Jerry Russell. ROW FOUR: Martha Slaughter, Ethel Skaggs, Edward Smith, John
 Rickett, Richard Phillips, Shirley Pence, Gayle Prince.



ROW ONE: Sue Warner, Ramil Stamper, Paula Werner, Adrian Tatman, Carolyn Whaley, Sharon
 Wessel. ROW TWO: Jon Yeley, Wilbur Swearingen, John Tieman, Carol Wolfe, Marilyn Webb,
 Martha Smith. ROW THREE: Judith Smith, Vivian Wilson, Nancy Stone, David Sparks, Richard
 Spindler, Eddie Watts. ROW FOUR: Joan Works, Jimmie Welch, Marvin Smith, Tom Woods,
 Fred Titus, Kenneth Worstell, Mary Tewart.

EIGHTH GRADE



Lovenguth, Lucas, Early, Lowe

EIGHTH GRADE CLASS OFFICERS

PRESIDENT	Patricia Early
VICE PRESIDENT	Gary Lovenguth
SECRETARY	Marjorie Lucas
TREASURER	Larry Lowe

EIGHTH GRADE



ROW ONE: Jerry Vanderpool, Elmer Gallimore, Clovis Journey, Bob Hall, Linda Hart, Sue Goodman, Patricia Reed, Linda Brown, Charlotte Bell, Charlotte Bretz. ROW TWO: Charles Phillips, Myrtle Cornwell, Barbara Herald, Dwight Thomas, Janice Boyd, Shirley Bell, Carol Blevins, Barbara Worstell, Carolyn Davis, Carol Schweinsburg, Barbara McGue, Mrs. Bailey. ROW THREE: Lavon Perkins, Loretta Riley, Joy Gnce, Mike O'Dell, David Brown, David Hudson, Haskell Puckett, Jack Staggs, Don Holland, Jerry Evans.

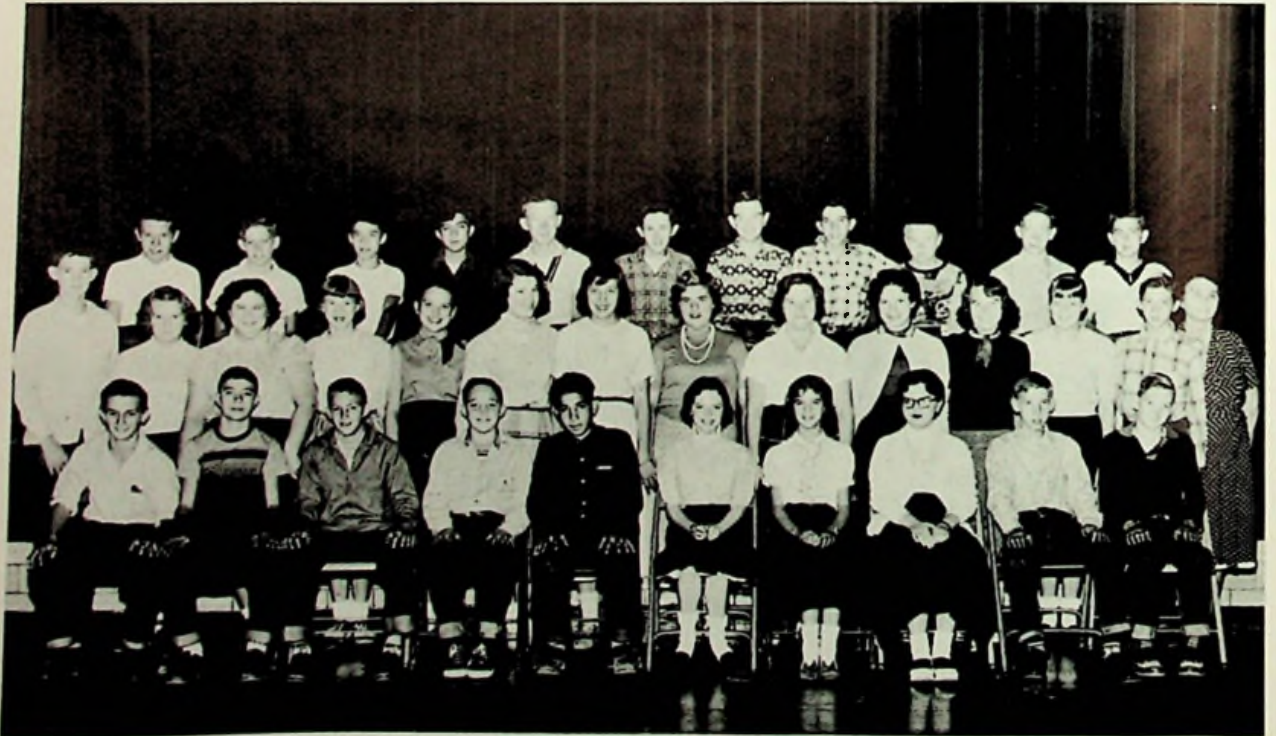


ROW ONE: Mary Lou Kennard, Dianna King, Suzanne Eubanks, Patricia Bevis, Beverly Robinson, Susie Reiter, Michal Paul, Patricia Staten, Charlene Stone, Gary Lovenguth, Janet Hamilton. ROW TWO: Jack Williams, Lawrence Wiseman, Harold Everling, Clarence Milstead, James Gillum, Bernard Howard, Roger Black, James Rickett, Robert Rhea, Marilyn Lookabaugh, Carol Guthrie, Mary Wilson, Brenda Dillow, Mr. Kirker. ROW THREE. Patricia Early, Sharon Biggs, Bonnie Miller, Janet Thompson, Rita Ruel, John Wellman, Robert Hornikel, Virginia Watson, Gloria Knaufl, Donna Rice, Phyllis Smith, Terry Evans.

EIGHTH GRADE



ROW ONE: Donna Frazier, Jean Ratcliff, Sandra Adams, Alma Johnson, Howard Varney, Woodrow Jordan, Charles Whittaker, Tomia Grandin, Sandra Tewalt, Jerry Conley. ROW TWO: Kenneth King, John Galloway, Etta Rigsby, Roger Gallimore, Carolyn Martin, Judy Lane, Bonnie O'Dell, Ada Shaffer, Barbara Clark, Frank Howard, Jerry Newman, Mr. Rapp. ROW THREE: Harry Mullens, La Vere Monoskie, Betty Basford, Jim Browning, Ruth Hall, Dianne DeLotelle, Frank Rose, Willis Howard, Bob Steele.



ROW ONE: Robert Nolan, Jackie Cottrell, Douglas Perry, Virgil Reynolds, Wandia Wright, Betty Buffinger, Mary Meadows, Sue Hall, Terry Howard, Melvin Gammon. ROW TWO: Joe Browning, Patty Brown, Wanda Rigsby, Billie Phillips, Donna Grandin, Ekie Conley, Ruth Cole, Carrie Davis, Marjorie Lucas, Delena Gardner, Joyce Wallin, Judy Shepherd, James Vanderpool, Mrs. Strickland. ROW THREE: George Grandin, Ronald Nibert, James Workman, Buddie Hilderbrand, Stanley Shepherd, Phillip Monoskie, James Entler, Denny Howard, Gary Shepherd, Frankie Hammond, Vernon Howell.

SEVENTH GRADE



ROW ONE: Wanda McGinnis, Avanelle Ober, Penny Parker, Richard Conley, John Cunningham, Delores Coleman, Kay Crull. ROW TWO: Wayne Sadler, Shelby Shover, Raymond Atkins, Tony Rhodes, Carolyn Wear, Carolyn Spurlock, Sue Mercer. ROW THREE: Geraldine Adams, Mike Flannery, Roger Gillum, Gary Lute, Willard Mershon, Mike Mefford, Robert Tyler. ROW FOUR: Mason Herod, James Collins, James Maynard, Jack Haffner, Sharon McKee, Wanda Franks. ROW FIVE: Larry Coleman, John Smith, Stephen Farney, Jerry Lockhart, Sharon Ferguson. ROW SIX: Carl Hoover, Walter Tackett, Paul Parker, Alfred Bricker, Mr. Davis.

ROW ONE: Judy Gregory, Judy Brown, Linda Redouty, Tommy Moore, Diann Butterbaugh, Christine Groy. ROW TWO: Machiel Shump, Russell Hammond, Joe Sieson, Carolyn McCown, Diann Carver. ROW THREE: Danny Scott, Sharon Ruel, Judith Roberts, Catherine Kitchen, Marsha McMullen. ROW FOUR: Linda Lovenguth, Laura Gaither, Donna Dietrich, Hobert Vanhoose, Carolyn Brown, Claudette Moore. ROW FIVE: Judy Morgan, Donald Mitchell, Nancy Myers, Mrs. Gulker.



ROW ONE: David Pollard, Linda Ridgeway, Helen Messar, Mary Ann Cummings, Phillis Hatfield, Theresa Royal, Ann Lewis. ROW TWO: Raymond Mershon, Larry Boyd, Janet Huff, Helen Murta, Anna Moore, Earlistene Rigsby, Barbara Cline. ROW THREE: John Wedebrook, Jerry Wessel, James Humphrey, Sandra Pistole, James Thompson, David Henry. ROW FOUR: Shirley Hamm, Sondra Manning, Donna Dunham, Barbara Kennard, Maxine Rose. ROW FIVE: Cora Smith, Charlene Manchester, Judy Caudill, Joyce Tackett, Joe Mundhenk. ROW SIX: Mrs. Williams, Bill Crisp, William Tackett, Arnold Weaver.



SIXTH GRADE



ROW ONE: Karen Hornikel, Sharon Cummings, Joe Birchfield, Sharon Weaver, Charlene Shoemaker, Deanna Stone, Herman Morgan, Larry Flannery. ROW TWO: Donald Richard, Virginia Hinze, Jerry Burchett, Penny Kitchen, Carole Butterbaugh, Shirley Smith, Ray Prince. ROW THREE: Sandra Blakeman, Suzanne Gillette, Doris Witte, Bonnie Black, Bonnie Adkins, Sarah Kennard, Ann Hinze. ROW FOUR: Mrs. Arnett, Gloria Brown, Donna Williams, Linda Appel, Colby Biggs, Alan Myers, Danny Yost.

ROW ONE: Timothy Mundhenk, Janet McGinnis, Clyde Hamilton, Judith Puckett, Kay Hamilton, Timothy O'Dell, Harry Walker, Walter Kirk. ROW TWO: Maudyne Blevins, Sharon Smith, Thomas Henry, Robert Workman, Roger Whaley, Robert Piatt, Gerald Tackett. ROW THREE: Brenda Hamby, Mona Covert, Emilee Brisker, Linda Jackson, Mike Riley, Henry Lancaster, Clay Galloway. ROW FOUR: John Adkins, Larry Gilbert, Walter Kemper, Janet Tackett, Boneva Kitchen, Elmo Mossbarger. ROW FIVE: Raymond Eckhart, James Hatfield, Joan Leslie, Voline Hilderbrand, Jerry Howe, Buford Mershon. ROW SIX: Timothy Maggard, James Muncy, Donald Day, Danny Gray, Robert Deaver, Jerry Ratliff, Mrs. Gifford.



ROW ONE: Tommy Kirk, Larry Adams, Jimmy Webb, Orville Scott, Danny Mahoney, James Deaton, Sonny Ashcraft. ROW TWO: Nancy Sims, Sharon Bevis, Shirley Webb, Gary Scott, Larry Bond, Freddie Stone, Herman Guthrie. ROW THREE: Sharon Mangus, Nettie Bridwell, Patricia Leech, John Jarrells, Terry Lucas, Richard Caldwell, Mary Farney. ROW FOUR: Connie Shepherd, Nellie Virgin, Mitzie Loless, Wanda Winter, Bonnie Howe, Larry Caudill, Clotine Rose. ROW FIVE: Robert Spurlock, Wayne Farney, Ronald Day, Lonnie Bloomfield, Charles G. Tackett, Vernon Deaver, Mrs. Goetz. ROW SIX: Beech, Leslie, David Hobbs, Richard Pick, Dick Riddle.

FIFTH GRADE

ROW ONE: Judy Horsley, Susan Jarrells, Phyllis Christy, Maxine Coleman, Jim Worstell, Nora Morrow, Bobby Malone, Billy Carver. ROW TWO: Sharon Partlow, Margaret Hornickel, Jerry Bertram, Dick Royal, Billy Burchett, Terry Drake. ROW THREE: Gary Borders, Douglas Biggs, Wanda Tackett, Charles Cook, Paul Goode, Danny Craft, Anne Richardson, Mary Alice Shaw. ROW FOUR: Elaine Phillips, Belinda Harris, Judy Atkins, Lale Sowards, Mike McCall, Michael Ridout, Paul Montieth. ROW FIVE: Larry Day, Herbert Pistole, Shirley Breech, Sharon Veach, Eric Hilt, Connie McGue. ROW SIX: Miss Jackson, Ernest Hamilton, James Lucas, Absent: Galenda Osborne.



ROW ONE: Sandra Gillum, Neva Stamper, Imogene Howell, Peggy Nichols, Sandra Hart, Ogra Conley, Lorene Howell, David Carver. ROW TWO: Carl Distel, Charles Pinson, Douglas Pollitt, Darwin Boyd, Rita Eubanks, Lois Hilderbrand. ROW THREE: Eloise Monk, Betty Ishmael, Vicki Hall, Max Hopkins, Charlene Hudson, Linda Conley. ROW FOUR: Greg Staten, Bill Kennard, Geraldine Foster, Perry Ratliff, Archie Arthurs, Gary Mershon, Mike Manning. ROW FIVE: Stanley Vanderpool, Willa Shaffer, Rosella Ratcliff, Charles Wood, Loretta Messer, Goldie Brown. ROW SIX: Gale Bertram, Ralph Carpenter, Richard Carver, Reita Steele, Mrs. Nibert.

ROW ONE: Jim Jordan, Bobby Joe Shackelford, Carolyn Morrow, Evelyn Murta, Larry Howe, Phillip Burks, Darrell Cook, Connie Ash. ROW TWO: Linda Carver, Sharon Goetz, John Smith, Carol Adkins, Richard Bloomfield, Ronald Fannin, Juanita Hall, Shirley Veach. ROW THREE: Dwight Borders, Donna Hammond, Judy Coleman, Douglas Bradshaw, Tim Penwell, Carolyn MaHoney, Linda Staten. ROW FOUR: Donna Lyons, Walter Cook, Marolyn MaHoney, Jim Ridgeway, Douglas Riley, Donald Traylor, Randy Myers. ROW FIVE: Miss Shupert, Douglas Monk, Betty Bridwell, Donald Maynard, Jim Gilkerson, Richard Dunham.



EIGHTH GRADE FOOTBALL TEAM

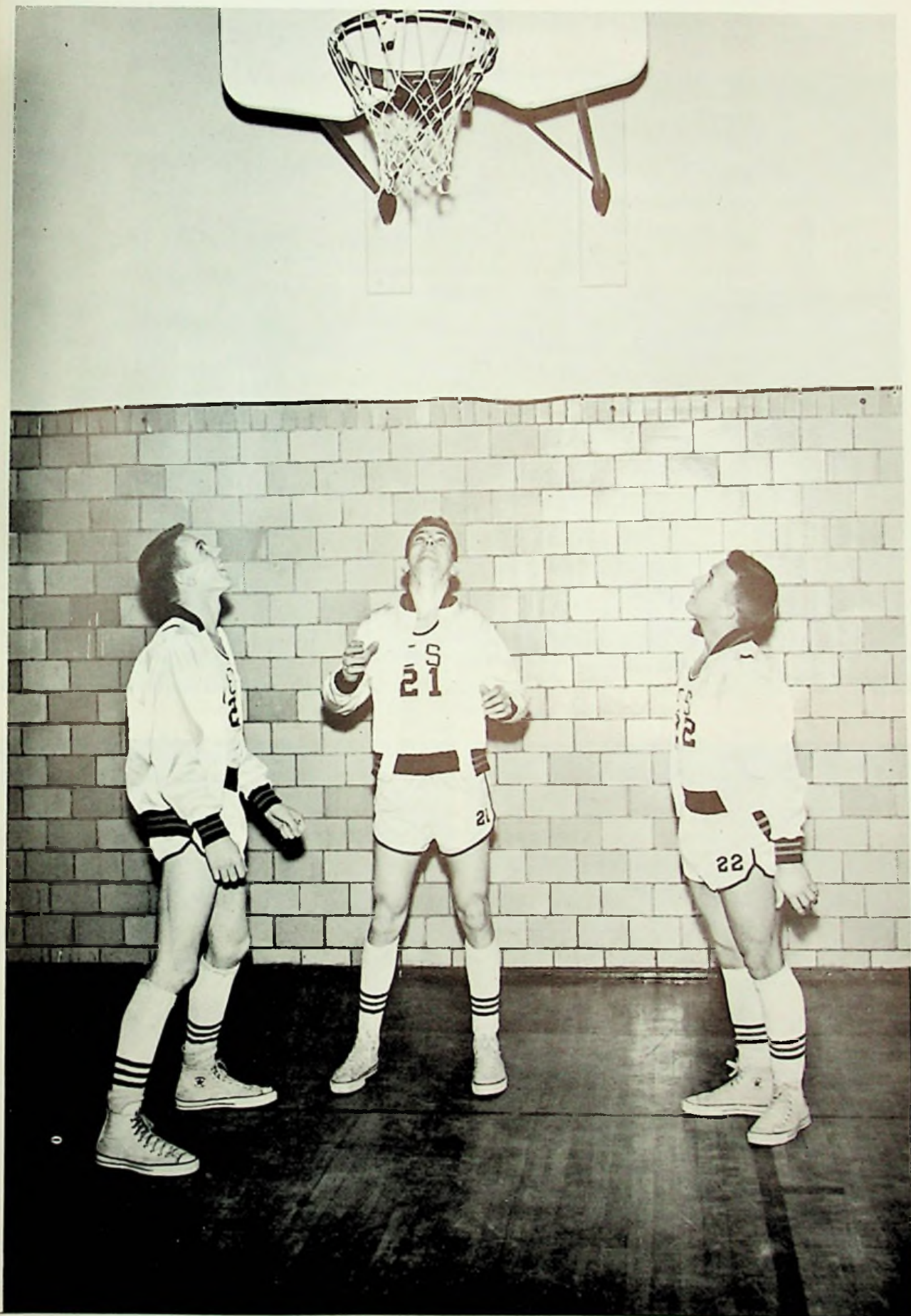


ROW ONE: Jerry Newman, Jim Rickett, Bob Nolan, Bob Hall, Bob Hornickel, Jim Workman, Ronald Nibert. ROW TWO: Don Nibert, Haskell Puckett, Jack Staggs, Terry Evans, Jerry Evans, Harold Everling, Arnold Weaver, Mr. Rapp (coach). ROW THREE: Roger Black (manager), Larry Coleman, Jim Browning, Lawrence Wiseman, Gary Lovenguth, John Wellman, Alfred Bricker.



CHEERLEADERS

ROW ONE: Michael Paul, Loretta Riley. ROW TWO: Rita Ruel, Sue Davis, Betty Bashford

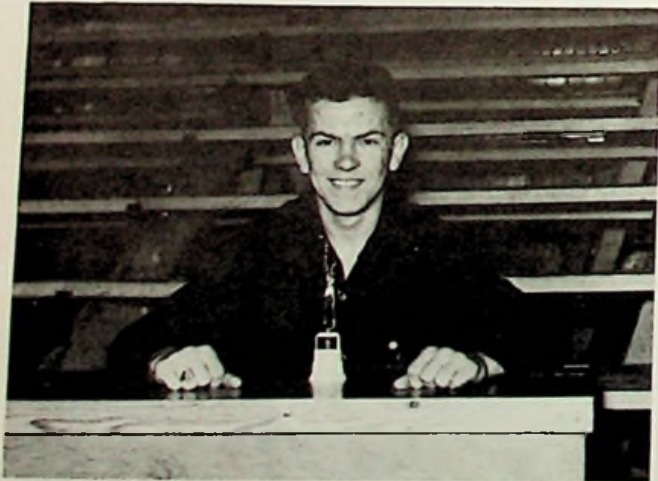


Gary Knauff, Pete Partlow, Jerry Hopkins warming up before the game !!

Coach Russell Hairston



**Statisticians, Allen Scheid and
John Gayhardt**

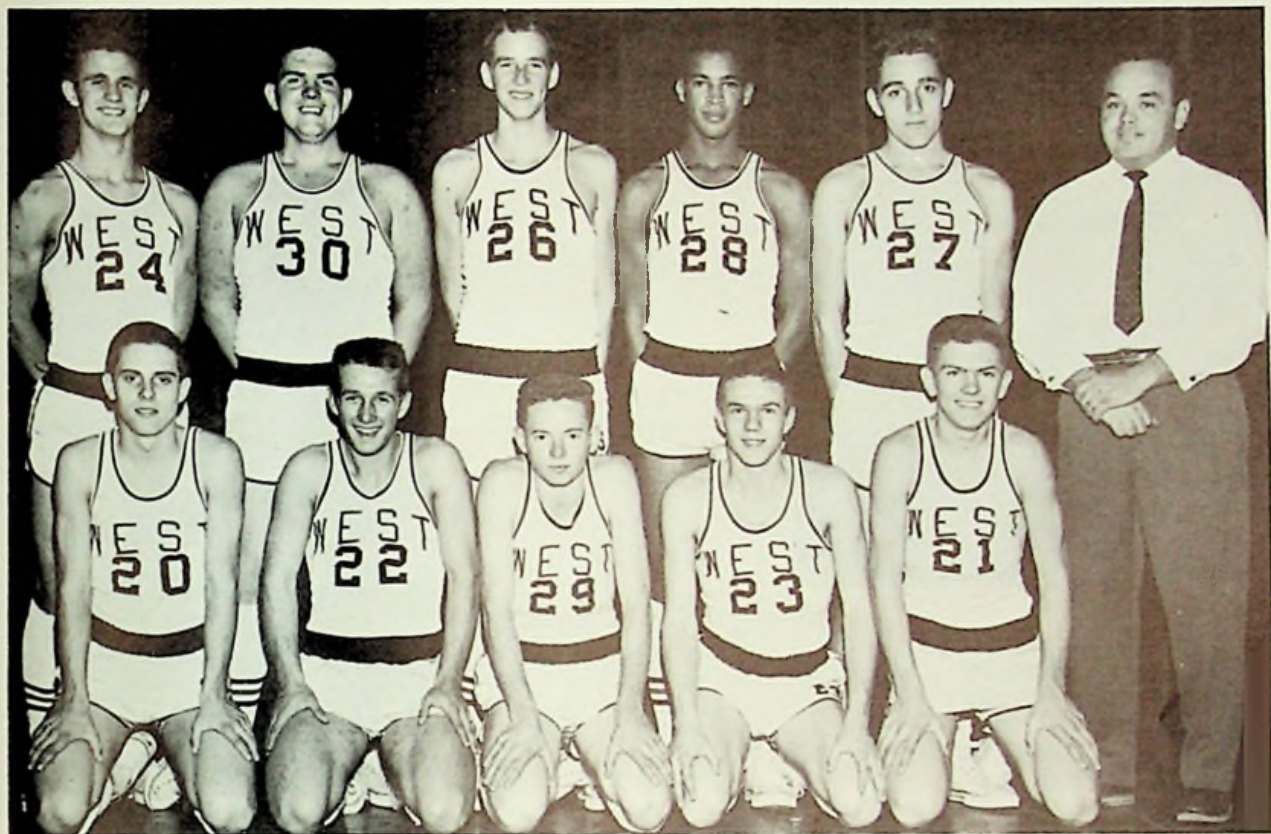


**Walter Partlow, All-Star S. O. C.
Basketball Player**



Manager, Russell Wilson

VARSITY BASKETBALL TEAM



ROW ONE: Ted Smith, Jerry Hopkins, Mike Brescia, Gary Knauff, Walter Partlow. ROW TWO: Ronald Mowery, Tom Partlow, Jerry Davis, Herbert Gardner, Don Pontius, Mr. Hairston.

WE	THEY
59	Waverly 74
37	Ironton 75
51	Minford 70
58	East 66
45	Notre Dame 63
49	New Boston 83
54	Valley 67
53	East 67
65	Hillsboro 54
43	Clay 65
64	Valley 80
49	Ironton 62
51	Wheelersburg 54
33	New Boston 54
45	Minford 46
58	Wheelersburg 65
49	Notre Dame 53



Tom Partlow
Sophomore
6' — Center

Ted Smith
Sophomore
5' 8" — Guard

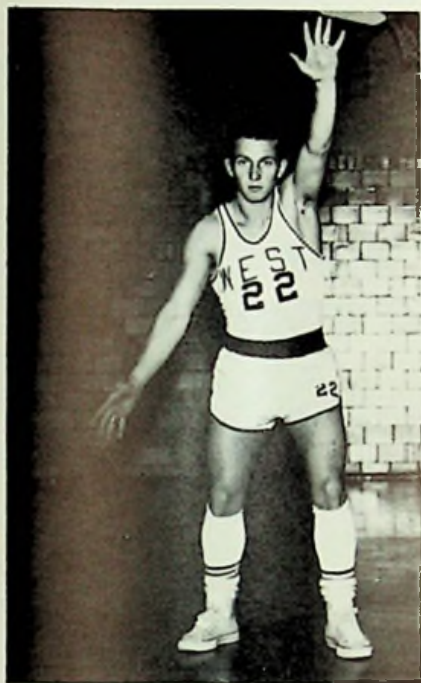


Mike Brescia
Junior
5' 8" — Guard



Don Pontius
Junior
6' — Forward

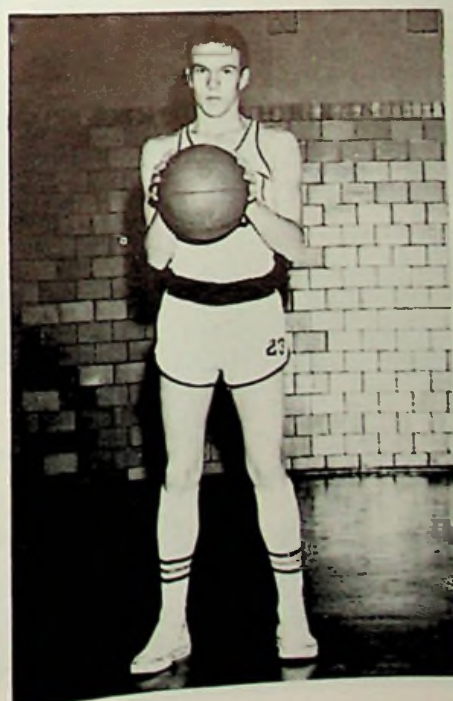
Jerry Hopkins
Senior
5' 6" — Guard



Jerry Davis
Sophomore
6' 2" — Center



Pete Partlow
Senior
5' 11" — Forward



Gary Knuff
Senior
5' 10" — Guard



Another Shot



Time Out



Tie Him Up!



Smith driving in for a layup



Jump Ball



Will he make it?



At the foul line

RESERVE BASKETBALL TEAM



ROW ONE: Nelson Breeze, Rodney Gardner, Duane Wilson, Fred Titus. ROW TWO: Donald Johnson, Gary Kitchen, John Weaver, Roger McGlone, Walter Hoover.

WE	THEY
51	Waverly 29
34	Ironton 54
25	Minford 34
22	East 49
31	Notre Dame 32
28	New Boston 42
25	Valley 38
32	East 45
23	Hillsboro 65
26	Clay 33
24	Valley 37
26	Ironton 41
34	Wheelersburg 31
29	New Boston 51
21	Minford 41
33	Wheelersburg 21

EIGHTH GRADE BASKETBALL TEAM



ROW ONE: Bernard Howard, Robert Nolan, Harold Everling, James Workman, Clarence Milstead.
ROW TWO: Larry Lowe, John Wellman, Willis Howard, Frank Howard, Ronald Nibert. ROW
THREE: Roger Black (manager), Jack Williams, David Hudson, Jerry Evans, Robert Steele, Arnold
Weaver, Heskell Puckett, Mr. Rapp (coach).



R. Browning, S. Morgan, S. Hall, P. Pollard, S. Monk, S. Hartstein

VARSITY CHEERLEADERS



Sue Monk



Saundra Morgan



Sandy Hartstein



Ruthmary Browning

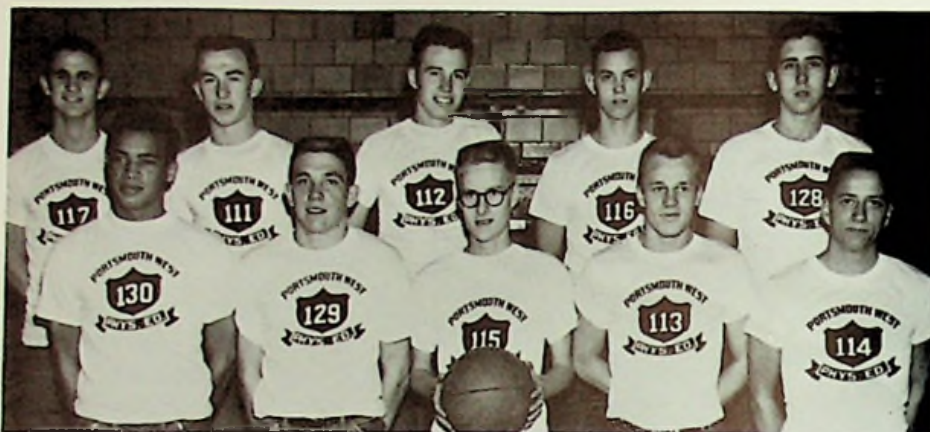


Phillis Pollard



Shirley Hall

INTRAMURAL TEAMS



CHAMPS SENIORS

ROW ONE: H. Gardner, R. Browning, P. Melvin, C. Frye, R. Jones. ROW TWO: R. Mowery, R. Shepherd, J. Wilson, G. Cook, N. Gambill.

JUNIORS

ROW ONE: D. Hall, J. Hart, R. Logan, G. Malone, J. Bridwell. ROW TWO: G. Perry, H. Lakin, B. Rose, D. Wessell, R. O'Dell.



SOPHOMORES

ROW ONE: B. Love, L. Tieman, D. Hart, K. Jones, O. Adkins. ROW TWO: J. Welch, S. Bean, G. Edmisten, P. Kifkendall, B. Boling.

FRESHMEN

ROW ONE: F. Martin, J. McGue, L. McGlone, G. O'Neil, J. Russell. ROW TWO: N. Frazier, C. Lewis, J. Welch, L. Grice.



Summer





**EDWARD R. McCOWEN
COUNTY SUPERINTENDENT**

Superintendent McCowen said in a statement to us, "The progress of all rural schools has been satisfactory and we are indeed proud of the splendid record of our schools. New School Legislation which goes into effect in 1956 should help us improve our systems in many ways. We must never be content with our progress, however, and our sights must be placed on the years to come from 1960 on through 1970 in order to meet the needs of our growing school population. The County Administration sends its congratulations to the Portsmouth West High School, the entire Staff, Principal, and Board of Education, and especially to the student body for a job well done."

Mr. McCowen received his B. S. Degree from Ohio University, the Masters Degree from Northwestern University and has attended both Otterbein College and Harvard University.

WASHINGTON LOCAL SCHOOL BOARD



SEATED: Mr. Lowell Strickland, Mrs. Margaret Perry, Mrs. Bessie Green. STANDING: Mr. Elza Calendar, Mr. Farrell Vaughters, Mr. Charles Prince.



FRANK B. ROLF

Mr. Frank B. Rolf, supervising principal of Washington Local Schools, received his B. S. degree from Ohio University and has studied further at Ohio Northern University.

Under the guidance and leadership of Mr. Rolf, Portsmouth West High School has continued to maintain high standards in scholarship and has excelled in athletics. Mr. Rolf has been untiring in his efforts to expand and to improve our school.



LEON DAVIS
Assistant Principal

Attended Rio Grande College,
Ohio University, and
Wilmington College



WILLIAM F. SNOOK
Guidance Counselor

Attended Miami University,
Wilmington College,
University of Cincinnati, and
Ohio University



MRS. GLORIA CLAUSING

Secretary to Mr. Rolf

FACULTY

HELEN ARNETT

Wilmington College
6th Grade—Math and
Spelling



MARY ALICE BAILEY

University of Kentucky
8th Grade—English



SYLVAN DAVIS

Ohio University—M. A.
English and Reading



HAROLD E. EVERLING

Eastern Kentucky
M. S. Ohio University
Phy. Ed—Senior Government



HELEN GIFFORD

Ohio University
English and Health



THOMAS C. GILES

Miami University
Vocal Music



DALE W. GILLETTE

Ohio State
Instrumental Music—Radio



MARY GILLETTE

Ohio University
Commercial



FACULTY

LIBBIE GOETZ

Wilmington College
Social Studies-Literature



ERNEST E. GRISWOLD

Morehead State College
Math and Physics



THELMA GULKER

Wilmington College
History-Science



RUSSELL HAIRSTON

Ohio University
Social Studies-Agriculture



EUNICE HARPER

Morehead State College
M. A. Duke University
American History, Democracy



WILLIAM C. HOLMES, JR.

University of Kentucky
Chemistry, General Science
and Biology



KATHRYN HOPKINS

Ohio State University
Science and Spanish



ELIZABETH JACKSON

Wilmington College
5th Grade



FACULTY

FOSTER R. KIRKER

Wilmington College
Ohio University
8th grade—American History



ERMA McCLURG

Ohio State
Home Economics

AMY MITCHELL

Ohio University
English



LENA NEVISON

Morehead State College
English

DOROTHY NIBERT

Rio Grande College
5th Grade



OLYMPIA ORLETT

College of Saint Teresa
Business Arithmetic

ORVILLE REISER

Ohio University
Industrial Arts



KATHLEEN ROLF

Ohio University
English

FACULTY

KENNETH RAPP
Wilmington College
Eighth Grade Science



BARBARA SHUPERT
Ohio University
Fifth Grade



DONALD STAGGS
Cedarville College
Civics, Physical Education



MARGARET STRICKLAND
Miami University
Eighth Grade Math



HATTIE TERRILL
Morehead State Teachers
College
Bookkeeping,
General Business



GEORGE THOMPSON
Ohio University
World History



CATHERINE WILLIAMS
Ohio Northern University
Seventh Grade, Math



MARGARET YONOVITZ
College of Wooster
English, Latin, Librarian





Mr. Everling, Mrs. Harper, Mrs. Hopkins, and Mr. Hairston discussing Senior Activities



MRS. AMY E. MITCHELL

The Annual Staff wishes to pay tribute to Mrs. Amy Mitchell, who has given many years of faithful service at Portsmouth West High School. In her honor our Honor Society has been named the Amy E. Mitchell Branch Alpha Delta Chapter of the National Honor Society.

She has also helped many students to attain high honors in the yearly Senior Survey Test.

We of the staff, the student body, and the faculty wish to express our sincerest congratulations.

These students placed high in the county in the general scholarship test for seniors:

- Katharine Beekman . . . Third
- Joseph Meade Ninth
- William Horsley Tenth
- Carol Jackson
- . . . Honorable Mention
- Gary Knauff
- . . . Honorable Mention



STANDING: Joe Meade, K. Beekman, W. Horsley. SEATED: G. Knauff, C. Jackson.

NATIONAL HONOR SOCIETY



ROW ONE: Mary Martin, Loretta Brown, Marilyn James, Marianne Rollins, Kay Kessinger, Faye Sibrel, Evelyn Riffe, Akla Penn, Shirley Hall. ROW TWO: Delores Fields, Katherine Beekman, Virginia Book, Patty Schaeffer, Carol Jackson, Paula Flowers, Donna Jarvis, Carolyn Sheppard, Ann Ross, Laura Rigsby. ROW THREE: Charles Smith, Mike Brescia, Kenneth Vaughters, Roger Nibert, Joe Reiter, Joe Meade, Ronald King, Ronald O'Dell.

NEW LIFE CLUB



LEFT TO RIGHT: Carless Lewis, Mary Alice Hall, Donna Canter, Allen Scheid, Rev. Carl Butterbaugh, Martha Slaughter, C'Dora Addis, Sharon Wessel, Mona Woten.

SPANISH CLUB



ROW ONE: George Edminsten, Mary Lou McNutt, Geraldine Knauft, Patricia Journey, Carolyn Braden, Janet Hall, Judy Hall, David Wolery. ROW TWO: Ellsworth McCann, Mary Lou Kennedy, Mona Woten, Patsy Abrams, Carless Lewis, Mary Hall, Ray Jones, Mrs. Hopkins.

LATIN CLUB



ROW ONE: Judy Anderson, Ruth Beekman, Sharon Bice, Jerry Biggs, Judy Blakemcn, Donna Brickey, Sue Brown, Marcene Collier, Dick Cook, Freda Cummings. ROW TWO: Maude Ann Curnutte, Harold Graham, Carolyn James, Carolyn Kennard, Dottie Kirkendall, Dennis Kirsch, Gary Kitchen, Mike Kessinger, Patricia Knittle, Bob Love, Mrs. Yonovitz. ROW THREE: Sidney Madden, Gwendolyn Meade, Ronald Newman, Roger Nibert, Garnet Noel, Carolyn Nolan, Sharon Perry, Jerry Piatt, Gayle Prince, Lynn Rolf. ROW FOUR: Tom Ross, Lynn Schroeder, Sue Warner, Eddie Watts, Kay Wellman, Kenneth Wilson, Don Thacker.

LIBRARIANS



L. Adams, C. Wilburn, F. Howell, L. Knuff, M. Martin, J. Howe, D. Fields,
H. Boling, D. Monk, S. Wood, A. Crull, J. Cox, S. Howe



An Interesting Display of Books in the Library



RADIO CLASS



ROW ONE: Charles Smith, Bill Coburn, Fred Simpson, Ronnie King, Ronald O'Dell, Herman Lakin, Gary Kenyon, Fred Shupert, Larry Jones. ROW TWO: James Slaughter, James Caldwell, Jerry Lewis, Bernard Monk, Robert Staten, Ted Frazier, Joe Meade, Bill Craiger, Herbert Conley, Mr. Gillette. ROW THREE: Dennis Monk, Gary Shaw, Harold Boling, Kenneth Vaughters, Mike Haffner.



Above: Tuning In
Right Above: Copying Code
Right: Viewing the Scope

SCIENCE CLUB



ROW ONE: Judy Anderson, Betty Friend, Sharon Bice, Nancy Stone, Judy Blakeman, Donna Brickey, Linda Bradshaw, Dick Cook, Marilyn James, Ray Jones, Carol Jackson, Katharine Beekman. ROW TWO: Sandra Morgan, Mary Webb, Roberta Goddard, Maude Curnutte, Carolyn Kennard, Gary Kitchen, Patricia Knittle, Patricia Schaffer, Akla Penn, Barbara Bolton, Ruth Conley, Donna Canter, Dennis Kirsch, Mr. Holmes. ROW THREE: Judy Higgenbotham, Donna Dougherty, Gwendolyn Meade, Roger Nibert, Garnet Noel, Carolyn Nolan, Sharon Perry, Jerry Piatt, Gayle Prince, Lynn Rolf, Carolyn Rapp, C'Dora Addis, Sharon Howe. ROW FOUR: Jerry Hopkins, Bob Staten, Wayne Wilson, Joe Meade, Henry Robinson, Sue Werner, Eddie Watts, Kenneth Wilson, Ann Crull, Marilyn Webb, Patty Hornickle, Ann Ross, Gary Cook.

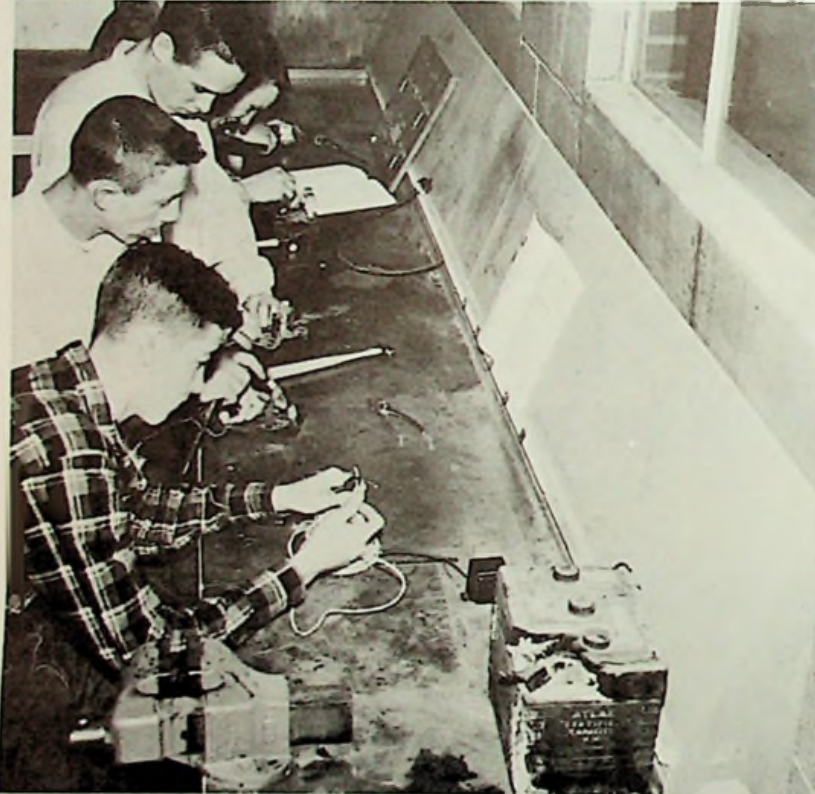


Jerry Piatt, Wayne Wilson, Lynn Rolf, Mr. Holmes, Saint Paul, Carolyn Kennard, Jerry Hopkins are studying the aquarium.



INDUSTRIAL ARTS

TOP: What will the circle prove?
 SIDE: Working with electricity.
 BOTTOM: Cleaning up the shop.



FUTURE HOMEMAKERS OF AMERICA



ROW ONE: Mary Adkins, Rebecca Kincaid, Joyce Basford, Pauline Morrison, Doris Webb, Zelma Wilburn, Betty Rayburn, Sharon Birchfield, Bonnie Reed, Barbara Browning, Ann Hamilton. ROW TWO: Carless Lewis, Pauline Wedebrook, Louella Knauff, Jeanie Bower, Lois Deems, Winona Brickey, Sue Barber, Palty Besco, Jane Dickson, Adrian Tatman, Donna Newman, Mrs. McClurg. ROW THREE: Delena Hunt, Noisha Spurlock, Doris Pick, Shirley Swearingen, Bonnie Murphy, Beverly Price, Phyllis Long, Serena Deaver, Anna Ratliff, Carolyn Whaley, Sharon Hornikel.



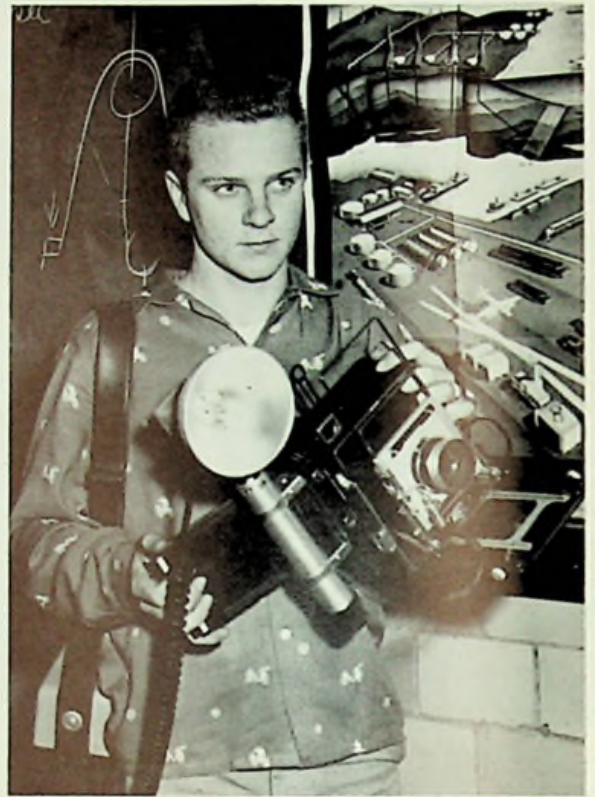
Learning to use the sewing machine.



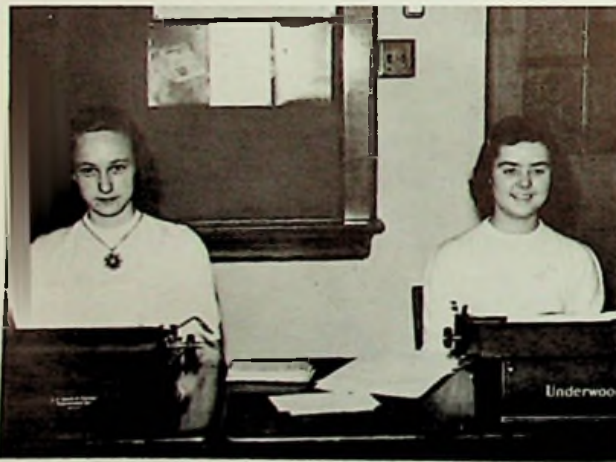
Making candy.



Mrs. Hopkins advising Pete Partlow and Connie Jayne, the co-editors of The Senatorian.



Roger Bridwell, the student photographer.



Delores Fields and Mary Lou Martin, the annual staff typists.

ANNUAL STAFF

Sue Williams, John Gayhardt, Virginia Book, Royal Watson, Donald Horsley, Joe Lauder are laying out pages of the annual.





THE STUDY HALL



TYPING CLASS

NEWSPAPER



EDITORS: Seated: C. Lewis, M. Schweinsberg, M. Rollins. Standing: J. Gayhardt, D. Wolery, M. Brescia, A. Scheid.

EDITOR	Martha Schweinsberg
ASSOC. EDITOR	Carless Lewis
BUSINESS MANAGER	Marianne Wessell
SPORTS EDITORS	John Gayhardt Mike Brescia
LITERARY	Mary Anne Rollins
HUMOR	Allen Scheid
ART	David Wolery
ACTIVITIES	Mona Wooten
CLASS REPORTERS	Allen Scheid Ann Ross Mary Lou Kennedy Ruth Beekman
PERMANENT TYPISTS	Dorothy Eulett Martha Schweinsberg Linda Jones Lillian Adams
REWRITE	Faye Sibrel Rheumonia Manning Patricia Yost Sheila Wood
MIMEOGRAPH	Rodney Gardner Jerry Davis David Wolery

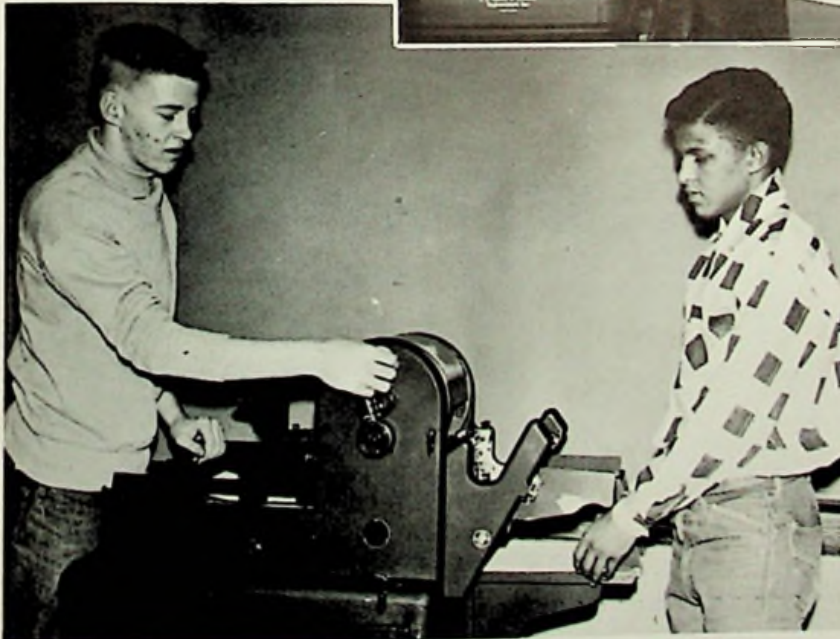


Mrs. Orlett



REPORTERS

SEATED: J. Basford, A. Ross,
M. Hall, P. Smith, R. Beekman.
STANDING: P. Schaffer, M.
James, P. Yost, S. Wood, F. Si-
brel, M. Wooten, Mrs. Nevison.



TYPISTS

L. Adams
L. Jones
D. Eulett

PRINTERS

J. Davis
R. Gardner

FIRE DRILL



Return to classes after a fire drill.



TOP LEFT: J. Loless, B. Applegate, N. Gambill, D. Johnson cleaning up after shop work. TOP RIGHT: F. Howell, D. Dougherty, L. Rolf decorate the bulletin board for Mr. Snook. BOTTOM: Mr. Ropp, Mr. Reynolds, Mr. Pistole are responsible for keeping the building spic and span.



GERMAN BAND

B. Love, C. Craycraft, F. Martin,
G. Wade, R. Newman, R. Nibert,
R. Floyd.

STRING BAND

C. Craycraft, P. Mangus, E.
Shively, G. Edmisten, R. McKin-
ney, J. Smith, B. Monk.



DANCE BAND

ROW ONE: R. Floyd, T. Ross, J.
Biggs, F. Shupert, R. Love. ROW
TWO: Mr. Gillette, R. Nibert, R.
Newman.

BOYS CHORUS



ROW ONE: Mr. Giles, J. Madden, G. Howard, L. Jones, J. Gayhardt, C. Stamper, F. Shupert, J. Tyler, J. Piatt. ROW TWO: A. Scheid, E. Smith, J. Lewis, B. Craiger, J. Belford, G. Kenyon, B. Boyd, J. Loless. ROW THREE: L. Smith, P. Kirkendall, D. Thacker, H. Gardner, S. Bean, B. Wallace, D. Byrd, G. Shively, W. Wilson.

MINSTREL



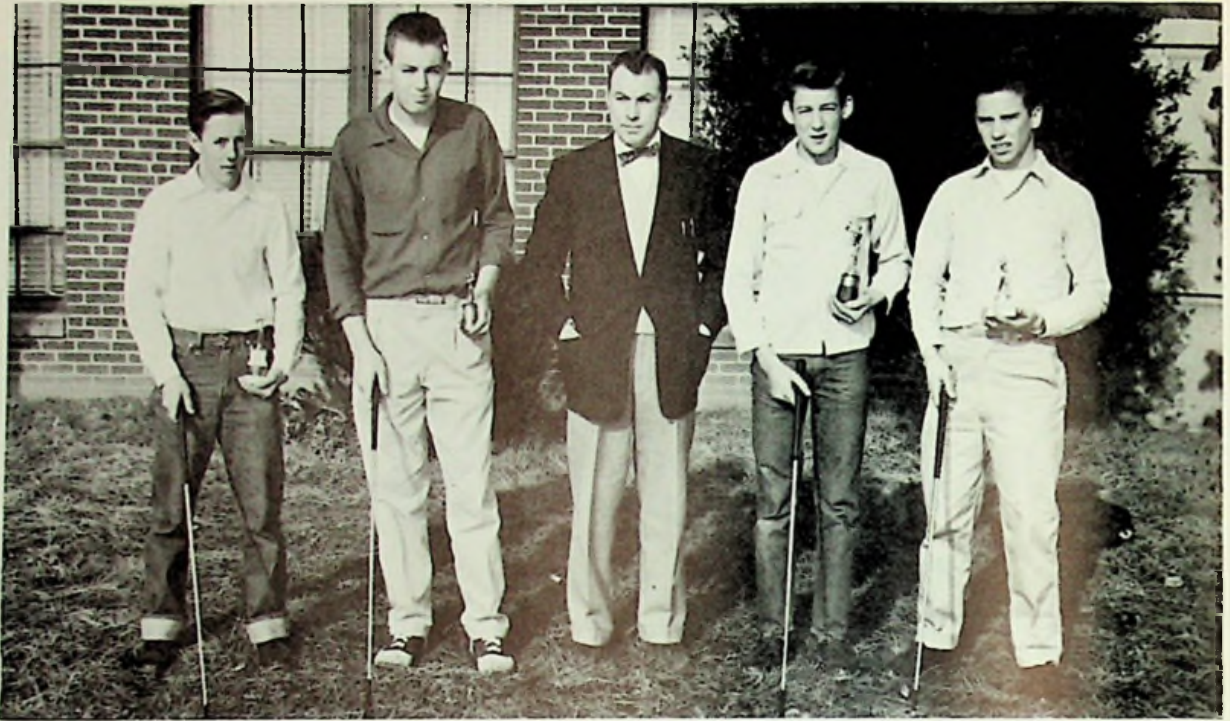
End-men and Mr. Interlocutor rehearsing for minstrel: F. Martin, G. Wade, A. Scheid, D. Wolery, J. Biggs, D. Byrd, C. Craycraft.

MIXED CHORUS



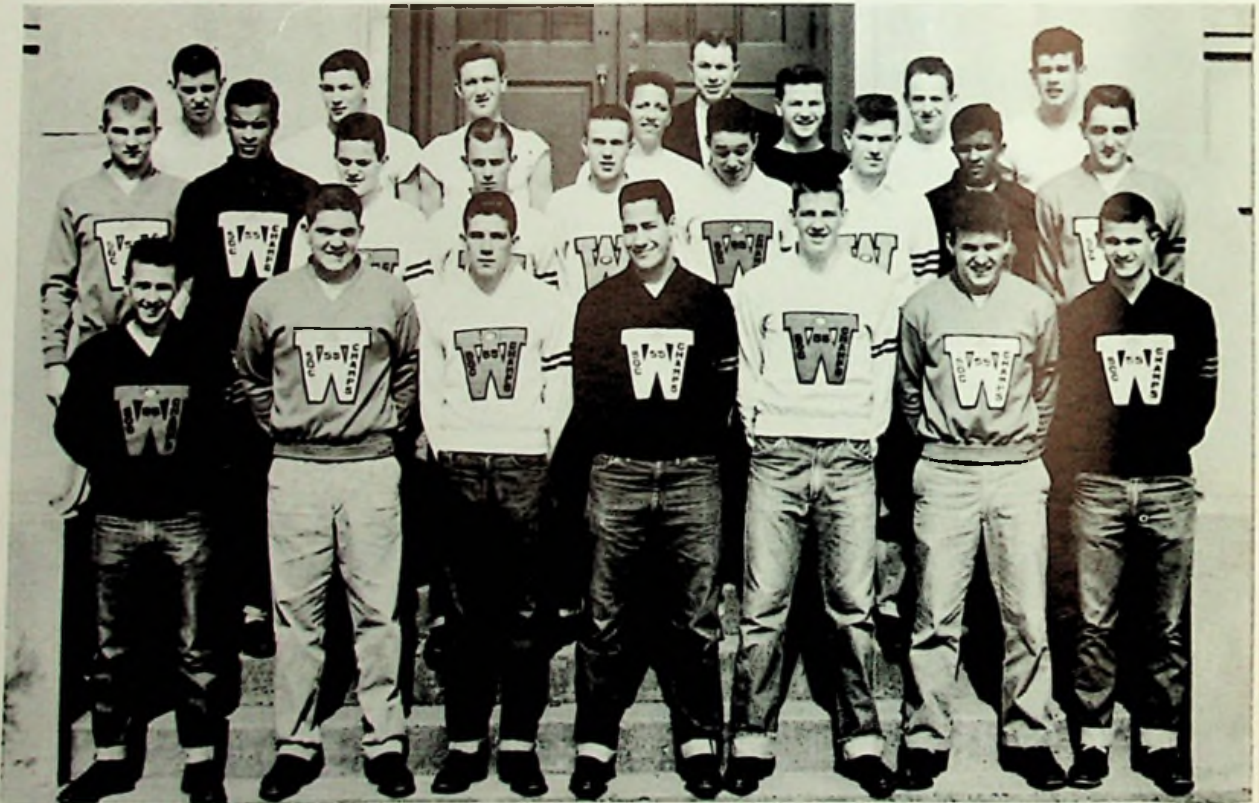
ROW ONE: Mr. Giles (Director) C. Nolan, G. Knauff, F. Cummings, J. Fields, B. Adkins, B. Cooper, J. Smith, R. Royal, A. Ratcliff, W. Brickey, L. Smith, M. Hall, J. Hall, R. Kincaid, P. Royce, D. Pick, N. Spurlock, J. Bower, B. Phillips, Mrs. Smalley (Accompanist). ROW TWO: C. Wolfe, R. Knauff, J. Royce, J. Bashford, D. Mooney, L. Bradshaw, C. Kepp, C. Whaley, P. Besco, J. Dickson, S. Morgan, C. Overstreet, R. Stamper, A. Roth, L. Adams, P. Pollard, F. Sibrel, C. Harrison, S. Roark, G. Meade. ROW THREE: I. Hicks, B. Browning, J. Scott, D. Hazelbaker, G. Prince, P. Scott, J. Madden, L. Knauff, K. Adkins, A. Holt, E. Johnson, N. Stone, S. Pence, L. Deems, S. Woods, P. Yost, M. Wessell, S. Wessell, R. Goddard, P. Bussa, B. Rayburn. ROW FOUR: M. Rice, L. Gardner, J. Morrow, A. Scheid, L. Smith, D. Fletcher, G. Howard, B. Roark, J. Tyler, J. Loless, B. Boyd, J. Pratt, C. Lewis, C. Collier, E. Ishmael. ROW FIVE: T. Ross, B. Monk, J. Lewis, J. Lauder, N. Shively, E. Stillwell, D. Byrd, C. Roberts, J. Belford, W. Wilson, J. Gayhardt, F. Shupert, B. Wallace, S. Bean, H. Gardner, P. Kirkendall, C. Stamper.

GOLF TEAM



H. Conley, M. Haffner, Mr. Everling, B. Myers, W. Hoover.

W CLUB



ROW ONE: J. Hopkins, T. Partlow, R. Browning, O. Sapp, J. Davis, V. Johnson, R. Mowery.
ROW TWO: J. Boyd, H. Gardner, J. Hart, B. Roark, G. Knauft, D. Wilson, W. Partlow, R. Gardner,
D. Pontius. ROW THREE: G. Cook, H. Lakin, R. Logan, R. Jones, W. Bailey, J. Stamper, S. Bean.
ROW FOUR: Mr. Everling.

BASEBALL TEAM



ROW ONE: Bob Love Don Johnson, Henry Robinson, Bill Coburn, Bob Roark, Harold Graham.
 ROW TWO: Philip Kirkendall, Kenneth Shupert, Jerry Davis, Roger Nibert, John Weaver, Ray Jones.
 ROW THREE: Jerry Hart, Jim Wilson, Herbert Gardner, Roy Logan, Rodney Gardner, Gary Cook, Coach Marvin Distel.

SCHEDULE

DATE	TEAM	PLACE
April 6	Portsmouth	Away
April 10	Waverly	Home
April 12	Minford	Away
April 18	Wheelersburg	Away
April 24	Notre Dame	Away
April 27	Notre Dame	Home
May 8	New Boston	Home
May 10	East	Away
May 14	Portsmouth	Home
May 15	New Boston	Away



DECORATIONS: S. Delong, O. Sapp, C. Sheppard, H. Lakin.



PROGRAM: K. Kessinger, C. Craycraft, M. Woten, J. McNutt.



INVITATIONS: A. Ross, E. Scaggs, J. Reiter, M. Rollins, D. Wolery.



TABLE ARRANGEMENTS: C. Lewis, B. Stevens, B. Vaughn, R. Kincaid, L. Rigsby.

JUNIOR-SENIOR BANQUET AND DANCE

April 27, 1956

MENU

Orange Juice
 French Fried Chicken or Fish
 Mashed Potatoes and Gravy
 Green Beans Buttered Beets
 Fresh Garden Salad
 Hot Rolls Butter
 Strawberry Shortcake
 Milk Coffee

PROGRAM

WELCOME Barbara Vaughn
 RESPONSE Glenn Howard
 SOLO Carless Lewis
 REMARKS Mr. Rolf
 "LIFE CAN BE FUN" Mr. E. R. McCowen
 DANCE Kennard Sisters
 WEIGHT LIFTING Ottis Sapp
 DANCING TO THE MUSIC OF ROBERT WADDELL
 AND HIS BAND
 ADVISORS Mrs. McClurg, Mr. Reiser



Science students: M. Kessinger, R. Phillips, D. Kirsch.



N. Floyd receives graduation announcements from G. Howard and M. Schweinsberg



A "pause that refreshes" for J. Dickson, L. Deems, and P. Besco.



Freshmen Don Baker and Jon Yeley



B. Wallace, W. Hoover, H. Gardner.



L. Bradshaw, K. Wellman, A. Roth, Pirates in the Operetta.



Mr. McCowen, main speaker for Career Day.



Assignment of rooms by Mr. Snook.



Speakers for Career Day enjoy a delicious lunch.



The students listen attentively to speakers.



Don't look so posed! It is just for the annual.



A quartet discussing the day's events.



Coach and Quintet at the basketball banquet.



S. Schlitz, B. Rayburn, J. McGlone, J. Howe starting off the day with a smile.



Dooley, Young, Knauff and Anderson pose!!



B. Reed, S. Wessell, starting home from a day at school.



Marcene Collier, Treasurer of the Freshman Class.



J. Blakeman, B. Smith, J. Davis at the basketball banquet.



M. Smith. C. Easter. M. Smith. J. Gifford. J. Morrow
talking it over.



C. Stamper. J. Caldwell. D. Pontius—hurry up and snap it!



C. Kepp. R. Hileman. P. Werner. B. Cline. I. Johnson
take time out.



D. Monk. M. McNutt. K. Kessinger. J. Yeley
compose the line up.



L. Roll. W. Ishmael pose for the camera.



S. Shivener. B. Vaughn. R. Warnock are happy
as they leave school.



S. DeLong enjoying a sleigh ride!



P. Kirkendall and M. Wessell rehearsing for "Operetta."



The cheerleaders trade places with the football players!



Annual Staff honored Roger Bridwell with a going away party.



Was it funny, Connie?



"Wanna ride?" Pete Partlow asks.



Michael May proudly displays his pigeons.



P. Hornikel and R. Floyd getting their books from the locker.



B. Smith and T. Partlow clowning as usual.



D. Mooney and D. Hazelbaker ready for the Ball.

SCHOOL LIFE



1. Upper Left—Juniors receive their class rings.
2. Upper Right—Bunny hop!
3. Middle Left—Lovely!
4. Middle Right—Tea Time!
5. Lower Left—M. Wessell makes out daily absence list.
6. Lower Right—Office Assistants: Seated—J. McGlone. C. Jayne.
Standing—D. Jarvis. S. DeLong. J. Howe.

CAFETERIA



Top—Meat, anyone?
Middle Left—Food!
Middle Right—Dirty dishes!
Lower Left—Thirty cents, please.
Lower Right—Clean up.

BUS DRIVERS



ROW ONE: Letcher Kennard, Jay Mitchell, Donald Sweeney, Ted Hoop, Perry Hill. ROW TWO: Joe Arnett, Forrest Pistole, Richard Calver, Harry Wessell, Daniel Reynolds.

COOKS



Mrs. Emma Goodman, Mrs. Mabel Brisker, Mrs. Helen Browning, Mrs. Hazel Bond, Mrs. Ann Acott, Mrs. Gwendolyn Payne.



Loyal to old West High



SALES STAFF FOR YEARBOOK ADS

ROW ONE: Mr. Snook, Mary Martin, Virginia Book, Marilyn James, Joann McGlone, Louella Knauff.

ROW TWO: Sue Williams, Shelby Schiltz, Paula Chapman, Marianne Wessel, Delores Fields, Jerry Hopkins, Glenn Howard.

ROW THREE: Ronald Mowery, Bob Hoover, Gary Knauff, Walter Partlow, Kenneth Vaughters, Allen Scheid, Royal Watson.

**ROBERT'S
BEAUTY
SALON**

Hair Stylists

Helen Curtis Cold Wave Permanents

Evening Hours: Thurs. & Fri.

HURTH HOTEL

Phone 4-1551

**WILMA RICE'S
GROCERY**

**Dry Run, Rt. No. 1
Portsmouth, Ohio
Phone W. Ports. 5227**

**THE FREE
PRESS
CO.**

Printers and Publishers

**1220 Ninth Street
Portsmouth, Ohio**

BETSY ROSS BREAD COMPANY

Betsy Ross is good bread — Try some today

PHONE 2-5171

1511 Chillicothe Street

Portsmouth, Ohio

**GLENN
WERNER**

STARTERS — GENERATORS

MOTOR TUNE UP

"Service that Satisfies"

M. P. Battery & Electric Company

921 Fourth Street
Portsmouth, Ohio

BODNER

RUG & CARPET CLEANING

"Professional care Prolongs the wear"

310 Washington Street
Dial ELMwood 3-8989

**KNOST'S
FOOD
MARKET**

Gallia at Lincoln
Portsmouth, Ohio
Phone 2-0551

**FOR THAT
"SECOND WIND"
PAUSE FOR
REFRESHMENT**

DRINK



TRADE-MARK REG. U. S. PAT. OFF.

IN BOTTLES

**PORTSMOUTH
COCA-COLA BOTTLING COMPANY**

3001 Scioto Trail
Portsmouth, Ohio
Phone 2-8311

**STANLEY
NEWMAN
TINNER**

434 Second Street
Portsmouth, Ohio
Dial 2-4061

MELCHER FUNERAL HOME

1417 Offnere Street
Portsmouth, Ohio

TWENTY-FOUR HOUR AMBULANCE SERVICE

PHONE 2-3191

DONALD T. DILLON INSURANCE AGENCY

FIRE — AUTO — BURGLARY

Phone 2-7181

202 Masonic Temple Building

Portsmouth, Ohio

Compliments Of

**WEST
SIDE
CLEANERS**

MEN'S FORMAL WEAR RENTAL SERVICE

Charles & Naomi Eubanks

City View & Galena Pike

Phone 9331

Congratulations

to the

Class of '56

**SUNSET
DRIVE-IN
THEATRE**

and

GLEN HOWARD

ROY LOGAN

NORENE BASFORD

DEELENA HUNT

FRED BENTLEY

**JOLLY
INN**

1335 Eleventh Street
West Portsmouth, Ohio

**CONLEY'S
GROCERY**

Galena Pike
West Portsmouth, Ohio
Phone 6222

**CUNNINGHAM'S
HARDWARE
STORE**

HOTPOINT APPLIANCES

519 Second Street
Portsmouth, Ohio
Phone 2-5571

**COLES PARK
SERVICE STATION
and GROCERY**

**Ashland Products
Groceries, Meats**

THE KIRKENDALLS
Your Patronage Is Appreciated

**SHELBY
CAUDILL**

**Meats, Groceries and
Shoes for the Family**

Phone W. Ports. 5289

WEST END ELECTRIC COMPANY

**Electrical Contracting and Appliance
Repairs**

PHONE 2-4181

714 Tenth Street

Portsmouth, Ohio

**JAYNE'S
POULTRY
and EGGS**

Eggs by the Carload

Phone Ulster 2587

**J. W.
STIR
COMPANY**

Floor Coverings

516 Second Street

Portsmouth, Ohio

Phone 3-5461

**V. C. MAGGARD
BARBER
SHOP**

**Open from 8 to 8
6 days a week**

**Poole Street
West Portsmouth**

Furniture

Appliances

**EHRMAN &
COMPANY, INC.**

"Where Portsmouth Buys with Confidence"

607-609 Chillicothe Street

Portsmouth, Ohio

Phone 2-4651

<p>Best Wishes</p> <p>From</p> <p>RONALD GREENE</p> <p>Your County Treasurer</p>	<p>Courtesy Of</p> <p>"The House of Quality Furniture"</p> <p>LONG and</p> <p>COMPANY</p> <p>729-733 Sixth Street Portsmouth, Ohio</p>
<p>WINDEL-HOWLAND FUNERAL HOME</p> <p>R. E. Swearingen, Manager</p> <p>DIAL 3-4111</p> <p>1503 Offnere Street Portsmouth, Ohio</p>	
<p>VAUGHTERS'</p> <p>SHELL SERVICE</p> <p>STATION</p> <p>Eleventh and Offnere Streets Portsmouth, Ohio</p>	<p>CAMEO</p> <p>RESTAURANT</p> <p>"For a Bit O'Sweet or a Bite to Eat"</p> <p>Twenty-four hour service</p> <p>839 Gallia Street Portsmouth, Ohio Phone 9-3301</p>
<p>IDEAL</p> <p>MILK</p> <p>COMPANY</p> <p>1637 Tenth Street Portsmouth, Ohio Phone 3-2951</p>	<p>CAROLINA</p> <p>LUMBER</p> <p>COMPANY</p> <p>"Everything to build anything"</p> <p>1011 Lincoln Portsmouth, Ohio Phone 2-1671</p>

EDWARD GULICK COMPANY

COMMERCIAL — RESIDENTIAL — INDUSTRIAL

Plumbing — Heating

Air Conditioning

ESTABLISHED 1917

Portsmouth, Ohio

Phone 2-7601

Compliments Of

CARL R. SMITH

County Auditor

RICHARD

BROWN

GENERAL CONTRACTOR

West Portsmouth, Ohio

Phone W. Ports. 2125

ADAMS BAKING COMPANY

Finest Quality Bakery Products For More Than 37 Years

PAN DANDY BREAD

1009 Offnere Street

Phone 3-4441

**PORTSMOUTH TYPEWRITER
COMPANY**

Authorized Dealers for

R. C. ALLEN

BUSINESS MACHINES, INC.

SALES — SERVICE — RENTALS

DIAL 7-0871

1028½ Offnere Street

Portsmouth, Ohio

**GEMPERLINE
FURNITURE
COMPANY**

Authorized
WESTINGHOUSE DEALER
QUALITY PLUS SERVICE

612-614 Second Street

Phone 2-7861

Compliments Of

**DOROTHY J.
BREWER**

CLERK OF COURTS

Scioto County, Ohio

Marting's

extends **CONGRATULATIONS**

to the **Graduating Class of '56 . . .**

. . . may your happiness and success
continue with each ensuing year.

**LOWE'S QUICK SERVICE
COAL COMPANY**

Best Grades of West Virginia Coal

Domestic or Commercial

Lowest Prices Now

Portsmouth, Ohio

Phone 3-3711

**DRIVE
SAFELY!**

Protect Our Children

Your Sheriff
BURL E. JUSTICE

**STAPLETON'S
OFFICE SUPPLY
COMPANY**

**Stationers — Office Outfitters — School
Supplies — Smith-Corona Typewriters**

"COURTESY and SERVICE"

Phone ELmwood 3-1187
829 Sixth Street
Portsmouth, Ohio

**COOPER &
FARRELL**

AUTO SALES

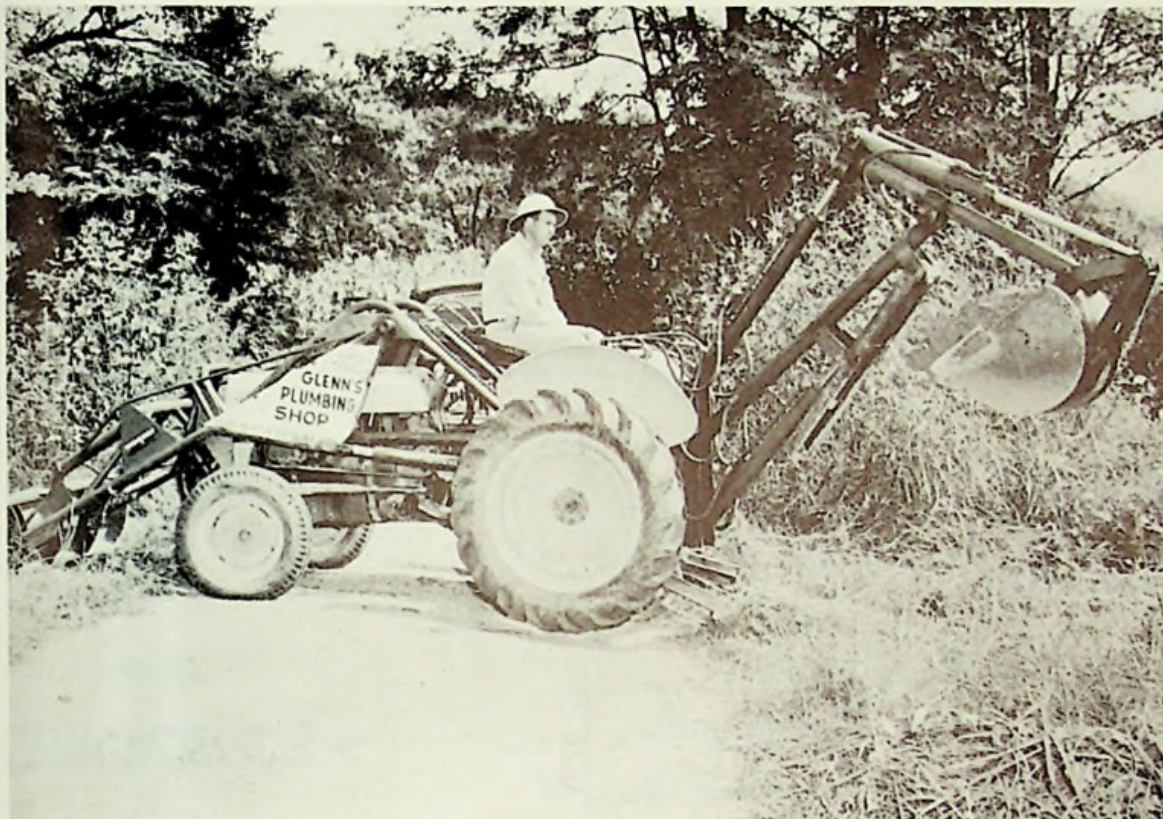
229 Second Street
Portsmouth, Ohio
Phone 2-0041

ORIGINAL CUT RATE

**STEWART'S
DRUG
STORE**

Prescriptions

904 Gallia Street
Portsmouth, Ohio
Phone 2-0531



GLENN'S
PLUMBING and SEWER SERVICE

Electric Eel Sewer Service
Sanitation Work of All Kinds

Sales and Service for Septic Tanks

JAMES GLENN, Owner

PHONE W. PORTS. 9564

2221 Rose Avenue

West Portsmouth, Ohio

MEN'S FURNISHINGS

ARROW SHIRTS

AHREND'S

838 Gallia Street

Makers of "Schaefer"
Made To Measure Clothes

**KALB
SHELL
SERVICE
STATION**

Second and Madison Street
Portsmouth, Ohio
Phone 9-2181

**WORK'S
GARAGE**

Friendship, Ohio
Phone W. Ports. 2869

TILENE'S

Gallia at Gay
Smart Feminine Fashions

Compliments Of

**FRED
BROWN**

Your
OLDSMOBILE — CADILLAC
Dealer

Portsmouth, Ohio

**BLACKBURN'S
MARKET**

3502 Gallia Street
New Boston, Ohio

Lowest meat prices
in the
Tri-State Area

Phone Boston 200

**FOR FINE PLATE LUNCHES
VISIT**

**BUSY
BEE
RESTAURANT**

Located At
617 Second Street
Portsmouth, Ohio

**THE HIBBS
HARDWARE
COMPANY**

WHOLESALE HARDWARE
Patronize your local dealer

737 Fifth Street
Portsmouth, Ohio
Phone 2-3841

BALDWIN PIANOS HAMMOND ORGANS

**SUMMERS
& SON,
INC.**

Everything Musical

906 Gallia Street
Portsmouth, Ohio
Phone 2-9181

**NORMAN
KITCHEN
GARAGE**

General Overhaul & Repair

825 Fourth Street (rear)
Portsmouth, Ohio
Phone 7-0162

Compliments To

THE CLASS OF 1956

**C. M.
DONALDSON**

**HERMAN
ROWE
GROCERY**

Self-Serve Market

Largest On Dry Run

**STANDARD
OIL
COMPANY**

YOUR SOHIO SERVICE CENTER
FLOYD WARREN—Manager

Second and Madison Streets
Portsmouth, Ohio

**ROBERT'S
JEWELERS**

"The Store of Friendly Credit"

"MORREY" WAINSTEIN—Manager

421 Chillicothe Street
Portsmouth, Ohio

**WEST
PORTSMOUTH
TELEVISION**

Phone W. Ports. 6021

End Of Towpath

**HUNTER'S LOCK
& BICYCLE SHOP**

Key Making — Safe Repairing
Door Checks and Repairing
Authorized Briggs & Stratton Service

1552 Gallia Street
Phone 6-6884
Portsmouth, Ohio

**PORTSMOUTH
PAINT
COMPANY**

928 Gallia Street
Portsmouth, Ohio

Dean & Barry

Pratt & Lambert

HOME OF DEAN & BARRY

**HIGH QUALITY
PAINT PRODUCTS**

**MODERN
GRILL**

Finest Food

836 Gallia Street
Portsmouth, Ohio
Phone 9-3081

**KIRBY'S
FLOWERS**

Gallia and Findlay Streets
Portsmouth, Ohio
Phone 3-2661

**PORTSMOUTH
MOTORS, INC.**

1112 Gallia Street
Portsmouth, Ohio
Phone 2-1781

MORGAN BROTHERS JEWELERS

VERNON and VICTOR MORGAN, Owners

PHONE 2-4181

734 Fifth Street

Portsmouth, Ohio

**ANN'S
KOFFEE KUP
RESTAURANT**

Sandwiches, Soft Drinks, Short Orders
Call in, Drive in or Come in

1018 Chillicothe Street
Portsmouth, Ohio
Phone 6-2453

**TRUCK and
TRACTOR
GARAGE**

**R. E.
MILLER**

General Merchandise

Sohio Service Tuxedo Feeds

Phone W. Ports. 2596
Buena Vista, Ohio

INTERNATIONAL TRUCKS

Day and Night Service

F. R. COOK, Owner

**POND
RUN
SERVICE**

Pond Run, Ohio

2740 Gallia Street

Phone 2-9041

BROCK FUNERAL HOME

PHONE 2-3151

Gallia and Waller Streets

Portsmouth, Ohio

**FAIRTRACE
SHOE
STORE**

Shoes for all the family
at Prices you can afford

Ninth and Waller Streets

**DAVIS
BODY
SHOP**

224 Second Street

Phone 2-5941

Phone 2-6921
Res. W. Ports. 2197

**ESTLE S. STALL
CONSTRUCTION, INC.**

Crane — Clam — Backhoe — Trucks
Bulldozer — End Loader — Asphalt & Gravel

207 Second Street
Portsmouth, Ohio

C. E. Andre, Mgr.
Phone 3-3331

**WEST END
FURNITURE
COMPANY**

Save in the Low Rent District

518-20 Second Street
Portsmouth, Ohio

BRIDWELL'S

GENERAL MERCHANDISE

Dealer For HOTPOINT APPLIANCES

NOEL BRIDWELL, Proprietor

Phone ULster 2864

Friendship, Ohio



FRANCIS FREEHILL BUS SERVICE

Chartered Service

PHONE W. PORTS. 9652

1721 Galena Pike

West Portsmouth, Ohio

**W. L.
WILHELM
JEWELER**

Diamonds of Quality

**507 Chillicothe Street
Portsmouth, Ohio**

**MARKET
STREET
HARDWARE**

Hardware

Housewares

Sporting Goods

**217 Market Street
Portsmouth, Ohio**

**CRICHTON
OFFICE
SUPPLY**

**Suppliers for offices and schools
Smith-Corona and Royal Typewriters**

**740 Fifth Street
Portsmouth, Ohio
Phone 3-3351**

**WILLIAMS
GROCERY**

MEATS — VEGETABLES — FROZEN FOODS

Earl & Fanny Williams

**516 Poole Street
West Portsmouth, Ohio
Phone W. Ports. 9583**



Courtesy Of

**J. C.
PENNY
COMPANY**

315 Chillicothe Street
Portsmouth, Ohio

**McGRAW'S
GROCERY**

Fresh meats, fruits & vegetables

1413 Washington Boulevard
West Portsmouth, Ohio
Phone 9269

CHRISTIAN LUMBER COMPANY

1403 Fourth Street

West Portsmouth, Ohio

MAC'S LUNCH

SANDWICHES — ICE CREAM — SOFT DRINKS

HOME MADE CHILLI

Galena Pike at Washington Boulevard

**ED GOETZ
BARBER
SHOP**

Short Street
West Portsmouth, Ohio

**WEST
PORTSMOUTH
BLOCK
COMPANY**

1715 Galena Pike
Phone W. Ports. 9141

**HALL &
WATTS**

CONCRETE & CINDER BLOCKS
Steel Windows — Building Supplies

Located On State Route 73
1815 Galena Pike
West Portsmouth, Ohio
Phone 9342

Bragdon's

409 Chillicothe Street
Portsmouth, Ohio
Phone 2-2066

**SCHISLER PROVISION
COMPANY**

FRESH and SMOKED MEATS

RETAIL STORE

801 JOHN STREET

PLANT

SPRING LANE AND RAILROAD

**DAULTON
BROTHERS**

Groceries — Meats — Milk

402-404 Second Street
Portsmouth, Ohio
Phone 2-3881

**W. G.
NOLDER'S
GARAGE**

Body and Fender Repair
Auto Painting **Welding**

Phone W. Ports. 2662
Buena Vista, Ohio

ED KIZER, REALTOR

PHONE ELmwood 2630

1006 Fourth Street

Portsmouth, Ohio

EDWARD STAEBLER

JEWELER

1117 Gallia Street
Portsmouth, Ohio
Dial 2-8391

CHARLES & ROGER

SOHIO SERVICE STATION

Come in often
We like to see you and serve you

2021 Galena Pike
West Portsmouth, Ohio
Phone W. Ports. 9641

McKEE'S GROCERY

1930 Washington Blvd.
West Portsmouth, Ohio

HORNE'S APPLIANCES

Bottle Gas Service

3236 Gallia Street
Portsmouth, Ohio
Phone 2-8811

LINDBERGH INN

We specialize in
Steaks, Chickens, Lunches

Route 52
1 mile west of
Portsmouth, Ohio

JAMES H. NICKEL

SOHIO SERVICE STATION

Phone W. Ports. 2273
State Route 125
Friendship, Ohio

CHABOT'S SUPER SERVICE STATIONS

U. S. Tires

Gulf Gasoline

MAIN OFFICE—GALLIA & OFFNERE STS.

Portsmouth, Ohio

Phone 3-2471

**PHIL
WOLFF
CLOTHING**

320 Chillicothe Street
Portsmouth, Ohio
Phone 2-7671

**PORTSMOUTH
LIME &
CEMENT
COMPANY**

Third and Jefferson Streets
Portsmouth, Ohio
Phone 2-0771

**BAZLER
COAL
COMPANY**

245 Fourth Street
Portsmouth, Ohio
Phone 3-4571

**KAY'S
JEWELRY
STORE**

Diamonds — Watches

817 Gallia Street
Portsmouth, Ohio
Phone 3-1581

**E. J.
KENRICK
COMPANY**

Distributors of Cigars — Cigarettes
Candies — Sundries

119 Market Street
Portsmouth, Ohio
Dial 2-3291

**OHIO
VALLEY
WHOLESALE
COMPANY**

714 Fifth Street
Portsmouth, Ohio
Phone 2-2881

**S. S.
KRESGE
COMPANY**

5c to \$1.00 Store

400 Chillicothe Street
Portsmouth, Ohio
Phone 2-4761

**MONTGOMERY
WARD &
COMPANY**

"Satisfaction guaranteed
or your money back"

HARSHA-JOHNSON COMPANY

**AUTOMOBILE — FIRE — FARM
PROPERTY — BURGLARY**

And All Kinds of Insurance

PHONE 2-2731

W. Howard Harsha
James B. Harsha

Howard Warren
Heron Johnson

DAN DEE POTATO CHIPS

High in Energy

Low in Starch

HYLO-IZED

**JARVIS
COMPANY
JEWELERS**

Diamonds — Watches

2901 Gallia Street
Portsmouth, Ohio
Phone 2-0851

**BEST
WISHES**

From

**O. CARSON
BARKLOW**

Your County Engineer

**CITIZENS SAVINGS
and LOAN ASS'N.
COMPANY**

**Oldest Savings Institution in
Scioto County — 1891**

505 Chillicothe Street
Portsmouth, Ohio
Phone ELMwood 3-5168

**GILL
FUNERAL
HOME**

Oxygen Equipped Ambulance

Sciotoville, Ohio
Phone Scioto 100

MART GLYNN FUNERAL HOME

RED AMBULANCE SERVICE

PHONE 2-3021

1147 Second Street

Portsmouth, Ohio

**Skating Schedule:
Tuesday, Wednesday, Friday and
Saturday — 7:30 to 10:30**

**This Advertisement
is a Prospectus for
Membership Application Only**

PORTSMOUTH SKATING CLUB

PHONE 7-3602

Roller Arena Building

Kendall and Gallia Streets

**BRIGGS
AUTO
UPHOLSTERY**

**Specializing in Auto Tops,
Plastic & Leather Seat Covers**

Fourth Street at Madison
Portsmouth, Ohio

**McNEER
TRACTOR
SALES**

**YOUR FORD FARMING HEADQUARTERS
New Holland Balers and Farm Equipment**

1318-22 Ninth Street
Portsmouth, Ohio
Phone 2-8711



CLASS OF 1956

Detroit Steel Corporation extends hearty congratulations to this year's graduates upon completion of another step in the process of preparing yourselves to become useful citizens in your community.

Your career after graduation will develop in a nation whose progress is a direct result of its freedoms, so that you will have an opportunity to grow and to develop in a land of opportunity.

The future will offer many additional opportunities for continued study and improvement. We urge all graduates to pursue all opportunities to further increase their knowledge in order to stay abreast of our rapidly expanding technology in a highly technical world. More than ever it can be said for the future that "knowledge is power."

DETROIT STEEL CORPORATION

PORTSMOUTH DIVISION

PORTSMOUTH, OHIO

F. C. DAEHLER MORTUARY COMPANY

Gerald W. Gilmore, Manager

TWENTY-FOUR HOUR AMBULANCE SERVICE

DIAL 2-9341

915-923 Ninth Street

Portsmouth, Ohio

Courtesy Of

**SMALLEY'S
GROCERY**

Turkey Creek

Phone W. Ports. 2368

**PORTSMOUTH
INTERSTATE
BUSINESS
COLLEGE**

Attend Summer School in 1956
Learn Speedwriting, Typing and
Other Practical Business Subjects

Leo Blackburn, President

815 Gallia Street
Portsmouth, Ohio

SHOP LEVI'S

SAVE MONEY

**SAMUEL
LEVI &
COMPANY**

Next to Laroy Theatre

844-850 Gallia Street
Portsmouth, Ohio
Phone 2-2751

**B & B
LOAN
COMPANY**

Jewelry — Luggage — Guns

837 Gallia Street
Portsmouth, Ohio



**BALL'S
GROCERY**

Hill Road

**Quality Meats, Fruits
and Vegetables**

West Portsmouth, Ohio
Phone W. Ports. 2124

HERFF-JONES COMPANY

Manufacturing Jewelers and Stationers

1407-1419 NORTH CAPITOL AVENUE

INDIANAPOLIS 7, INDIANA

**ESCOM
WILEY**

REAL ESTATE

City, Suburban and Farm Property

Trade What You Have For What You Want

ELmwood 3-5520

ULster 8-1496

Boston 252-L

921 Chillicothe Street



RESTAURANT

Fine Food

1630 Gallia Street

Portsmouth, Ohio

Phone 3-4256

WALKERS

Family Shoe Store

Portsmouth, Ohio

**REED'S
GROCERIES**

Meats — Milk

2431 Gallia Street

Portsmouth, Ohio

Phone 5-6821

**FOUR
KEYS**



**MEANS
GOOD
FOOD**

Portsmouth, Ohio



**HUSTON
PONTIAC
COMPANY**

Gallia-Lincoln-Ninth Streets

Portsmouth, Ohio

Phone ELmwood 3-5123



**MITCHELL'S
SERVICE
STATION**

Galena Pike

Phone W. Ports. 6181

**WAGNER
IMPLEMENT
COMPANY**

Your New Idea and Ferguson Dealers

3537 Gallia Street
New Boston, Ohio
Phone New Boston 125-X

**PACK'S
TRAILER
RENTALS**

730 Fifth Street
Portsmouth, Ohio
Phone 2-9221

WATCHES

DIAMONDS

**CLARK'S
JEWELRY**

816 Gallia Street
Portsmouth, Ohio

Formerly Zoellner Jewelry Company

**DAVIS
GROCERY**

1127 Calvert's Lane
West Portsmouth, Ohio
Phone W. Ports. 9241

**GREYSTONE
MOTEL**

One mile West of Portsmouth on U. S. 52

Air Conditioned T. V. in Lobby
Hot Water Heat P. B. X.

Phone W. Ports. 9711

**WILLIAMS
GROCERY**

Fresh Meats and Vegetables

Dudley Williams, Proprietor

Sugar Grove
Phone ULster 2677

HERMS FLORAL COMPANY

CONGRATULATIONS TO THE CLASS OF 1956

PHONE ELmwood 3-5150

837 Sixth Street

Portsmouth, Ohio

PIATT FUNERAL HOME

PHONE 2-4071

926 Ninth Street

Portsmouth, Ohio

GLYNN'S OFFICE MACHINES

814 Sixth Street
Portsmouth, Ohio
Phone 3-1971 or 2-7601

MCGAHAN TRI-STATE EXTERMINATOR COMPANY

Termite & Pest Control — Free Inspection

1026 Offnere Street
Portsmouth, Ohio
Phone 3-2871

Atlas Fashions

"Home of Sallie Ann"

Style center of this area since 1895

PHONE 3-2511

307 Chilliocthe Street

Portsmouth, Ohio

SAND SPORTING GOODS

Everything for the Sportsman

PHONE 2-7931

822 Sixth Street

Portsmouth, Ohio

COMPTON
ENGRAVING
and
PRINTING
COMPANY



"QUALITY PRINTING THE MODERN WAY"

ELmwood 3-8680
1412 THIRD STREET

PORTSMOUTH, OHIO

HERRMANN MEAT MARKETS

RETAIL STORES

221 Market Street — Phone 2-4681

913 Gallia Street — Phone 3-5011

1739 Eighth Street — Phone 3-1611

PACKING HOUSE

2640 Gallia Street

Phone 3-4321

PORTSMOUTH, OHIO

BUSSA HOBBYLAND

Sporting Goods — Electric Trains

Shotguns — Rifles — Revolvers

We Buy, Sell or Trade

Route 125
Friendship, Ohio

Mc KINNEY'S

RADIO and TELEVISION

SALES and SERVICE

Ninth and Offnere Streets
Phone 2-9841

PORTSMOUTH'S OLDEST TV DEALER



HARRY HAMILTON GARAGE

Auto Painting and General Repairs

Phone W. Ports. 9348
Galena Pike
West Portsmouth

Compliments Of

SHEETS FURNITURE COMPANY

526-32 Second Street
Portsmouth, Ohio

BEST WISHES

HAROLD HANES

Your County Recorder

KOBACKER'S

"Your Friendly Store"

PHONE 3-1351

405 Chillicothe Street

Portsmouth, Ohio

GRIMM'S SPORTING GOODS

Wilson and Rawlings Sports Equipment

TEAM OUTFITTERS

1003 Gallia Street
DIAL 5-5892

BORDEN'S

MILK — ICE CREAM

237 Second Street
Portsmouth, Ohio
Phone 2-1351

Best Wishes to the Class of '56 From

CARR'S JEWELRY STORE

811 Gallia Street
Portsmouth, Ohio

HESS ENGLE'S HOME SUPPLY COMPANY

General Electric Appliances

831 Sixth Street
Portsmouth, Ohio

PEPSI COLA BOTTLING COMPANY

"Refreshes Without Filling"

2415 Chillicothe Street
Portsmouth, Ohio
Phone 2-8461

ANNE'S PASTRY SHOP

Everything Fine in the Pastry Line
Our Specialty Wedding and Birthday Cakes

708 Chillicothe Street
Phone 2-7291



STONE'S DAIRY BAR

Galena Pike

West Portsmouth, Ohio

STOCKHAM'S

STORE and FILLING STATION

Friendship, Ohio
Phone W. Ports. 2742

Courtesy of

DEHNER'S DRY GOODS STORE

613 Chillicothe Street
Portsmouth, Ohio
Phone ELmwood 4-1079

HILT'S GROCERY

332 Calvert's Lane
West Portsmouth, Ohio
Phone W. Ports. 6391

HACKWORTH'S MOTEL

GARAGE and SERVICE STATION
One Stop Service
At your service — All modern rooms

Friendship, Ohio
U. S. Route 52





