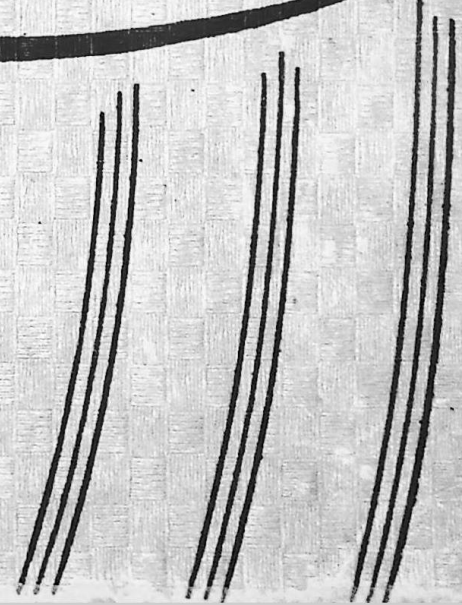
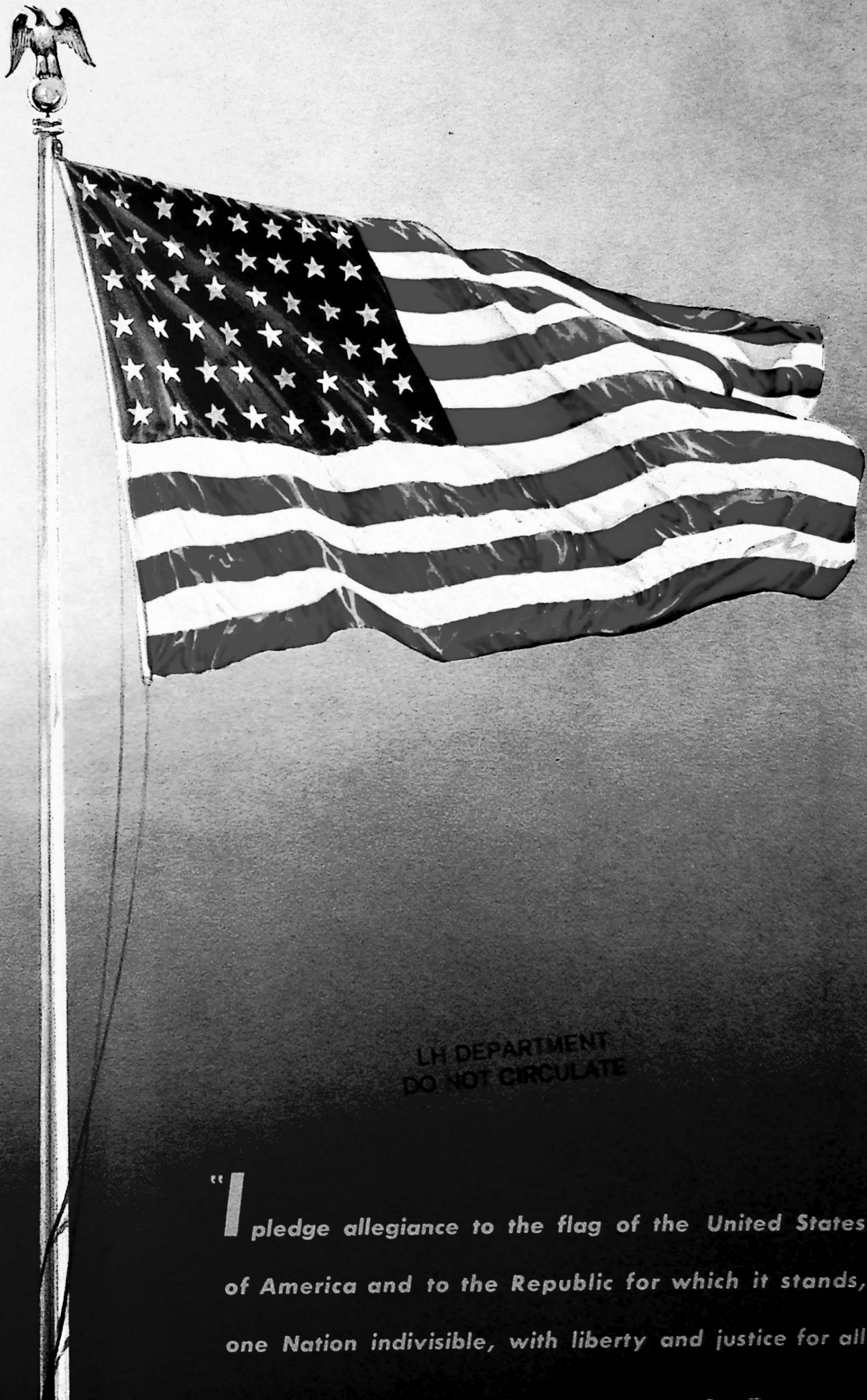


The
1944
Wheel

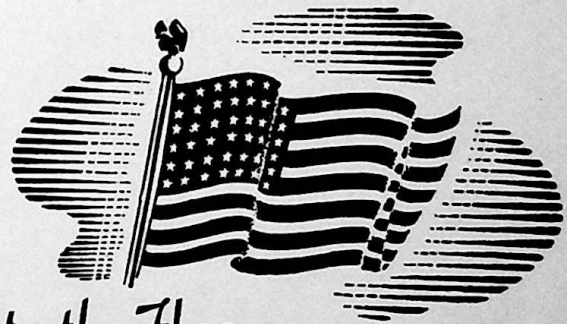


1941
JAN 21 1941



LH DEPARTMENT
DO NOT CIRCULATE

I pledge allegiance to the flag of the United States of America and to the Republic for which it stands, one Nation indivisible, with liberty and justice for all"



I Pledge Allegiance to the Flag . . .



C. H. DIDWAY, LT. *(i. g.)*

To you, Mr. Didway we, the students of
Wheelersburg High School, dedicate this, our
annual. Whatever you undertake, wherever you
go we sincerely wish you the best of luck.



UNITED STATES NAVY

January 20, 1944

Dear Students,

I was glad to hear that your Annual will be published for the school year of 1943-44 and, remembering your zeal, am quite sure it will be better than ever.

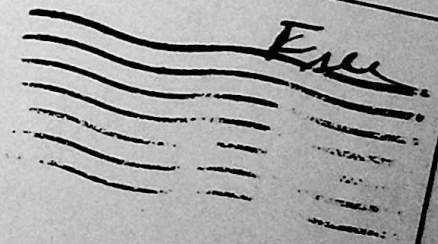
Regardless of where I am or where I go in the world, my thoughts invariably wander back and linger with you very often as I recall our many pleasant days and enjoyable times together.

Here's to you - You're "tops" with me!

Sincerely,

Lt. C. H. Tidway

Lt. C. H. Tidway
Armed Forces
SS. William Withing
Co Fleet Post Office
N. Y. N. Y.



Mary Lou Blum
Editor-in-Chief
Wheelerburg High School
Wheelerburg

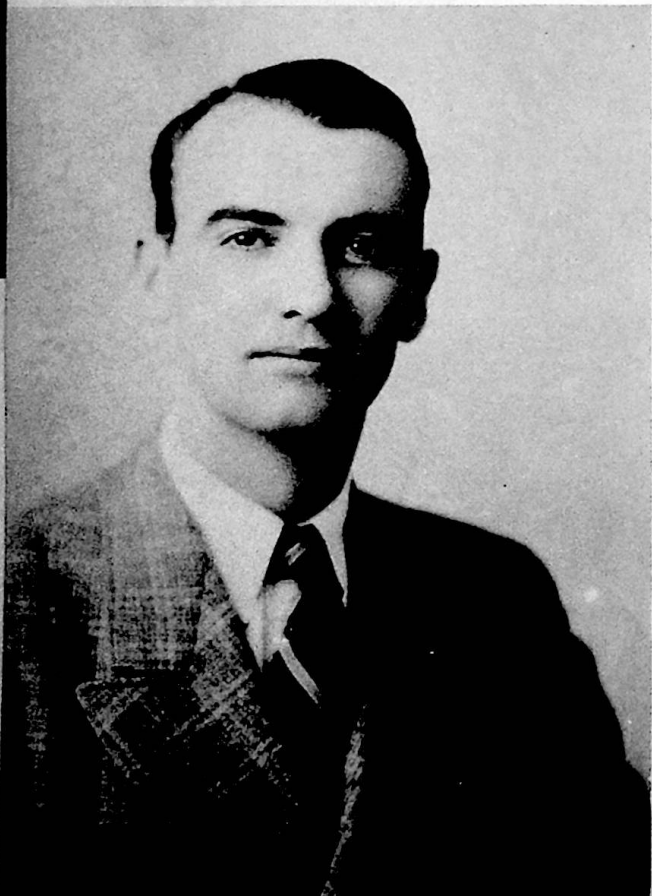
LT. CATHARINE WELLS

MILDRED BLAIR, Sp. T. 3/c



Catharine Wells, ex-Wheelersburg High School commercial teacher, now holds the commission of First Lieutenant, WAC. Her latest assignment is Chief of Operations Section, scheduling all the different classes for the Post.

Mildred Blair taught the fifth grade at Wheelersburg Grade School before entering the WAVES. She chose her duties in the field of radio and is now a link instructor.



E. R. McCOWEN, LT. (j. g.)

*County Superintendent of Schools.
Otterbein College, Ohio University,
Bachelor of Science in Education.*

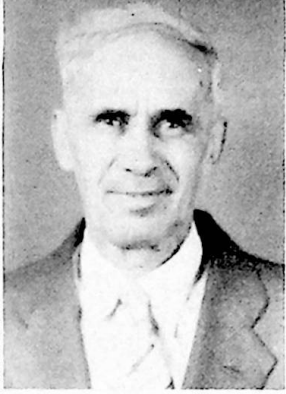
Northwestern University, Masters Degree in Music.

Mr. McCowen began his work as Assistant County Superintendent in 1940. From his previous experience with one-room schools on up through some of the largest county high schools and as Assistant County Superintendent, he obtained a background and knowledge of the entire county school system.

With the entrance of his father, E. O. McCowen, into Congress he became County Superintendent. Mr. McCowen has now entered the Navy, commissioned a Lieutenant (j.g.). Consequently N. B. Potts, Assistant County Superintendent, has assumed the duties of County Superintendent during the absence of Mr. McCowen.



R. L. May
President



Carl Herms
Clerk



Fred Pollock
Vice President



John Harper Preston



George Smith

LOCAL BOARD

COUNTY SUPERINTENDENT

N. B. POTTS

*Bachelor of Arts, Rio Grande, Ohio University;
Graduate Work, University of Cincinnati.*

Mr. Potts, who is a graduate of Bloom Township High School in South Webster, has been serving as County Superintendent since March 1, 1944. He was supervising principal of Bloom Township High School at South Webster for thirteen years and was supervising principal of Valley Township High School at Lucasville for four years. Before occupying his present position, he was Assistant County Superintendent for ten years.

He was a member of the Executive Committee, County Superintendent Association of the State of Ohio, for a term of two years and served a term of four years on the District Athletic Board of Southeastern Ohio.

Mr. Potts plans to carry on the progressive school policies that have made the Scioto County schools one of the outstanding school systems of the state.





PEARL G. SMITH

Supervising Principal

*Advanced Algebra
Solid Geometry*

*B. S. in Ed., Ohio U.
M. of Ed., U. of Cincinnati*

Successor to C. H. Didway, Mr. Smith is now serving as principal of the Wheelersburg District and has succeeded very well in carrying on the work of his predecessor.

Mr. Smith has been teaching here for eight years, beginning in the fall of 1936.

He received his Masters Degree from the University of Cincinnati in 1943. He is a member of Phi Delta Kappa, National Honorary Educational Fraternity.

FACULTY



ARTHUR PRESTON
*History, Industrial Arts, Radio
Theory and Code, Coach.*
*B. S. in Ed., Wilmington, Ohio
U., U. of Cincinnati.*



ELVA SHELA
English.
B. S. in Ed., Ohio U.



DONALD McCOWEN
*Science, Radio Theory
and Code.*
*B. S. in Ed., Ohio U., Ohio
State U.*



RUTH DISTEL
Home Economics, English.
B. S. in Ed., Mount St. Joseph.



J. D. MCKINLEY
*Science, Government,
Mathematics, Latin.*
*A. B., B. S. in Ed., M. A. Rio
Grande, Ohio State U.*



M. E. McNAMARA
English.
*A. B. St. Mary's, Notre Dame,
Ohio U.*

FACULTY



CHARLYN ADAMS SILL
*Vocal Music, Band,
Theory and Harmony.
B. in Music, A. B. in Ed.,
Dennison.*



J. E. McNAUGHTON
*Science, English.
B. S. in Ed., Ohio U., M. A. Ohio
State U.*



MARTHA CUNNINGHAM
*Science, Physiography,
Physical Ed.
B. S. in Ed., Ohio State U.,
Antioch.*



FLOYD SCHNEIDER
*Physical Ed., Agriculture,
English.
B. S. in Ed., Ohio U.,
Wilmington.*



RUTH HUMPHREY
*Commercial, Latin.
A. B. Ohio U., M. A. Ohio
State U.*



ERNEST McCHESNEY
*Industrial Arts.
B. S. in Ed., Ohio U., U. of
Cincinnati.*

FACULTY



WILLA SUE RICHARDS
English, History.
A. B. Eastern Kentucky State
Teachers' College.



JACOB H. SEE
Science, Mathematics.
B. S. in Ed., Ohio U.



LYDA BELLE SHEPHERD
Commercial.
A. B. Eastern Kentucky State
Teachers' College.





WITH THE TEACHERS ON THE HILL

Back Row: *Bertha Purdue, second grade; Lucille Burke, third, fourth and fifth grades at Wilson Addition; Ollie Hibbitts, first grade; Loyzelle Haffner, fourth grade; Violet Preston, fifth grade; Cecil Pollock, second grade; Avanelle Staker, first grade.*

Front Row: *Irene Groh, fifth grade; Agnes McLeod, first and second grades at Wilson Addition; Ruth Snook, third grade; Ann Thompson, sixth grade; Helen McCowen, sixth grade; Lillian Barney, sixth grade.*

Not Pictured: *Lorean Stanley, third grade; Mary McCarty, fourth grade; Helen Fern Hively, third, fourth and fifth grades at Sciotodale; Sevah Swift, first and second grades at Sciotodale; Virginia McHenry, third and fourth grades at Allentown; Grace Carter, first and second grades at Allentown.*

ELEMENTARY TEACHERS

These teachers start the students on their way to the future through education. If little Joey is a bit slow, it is their task to teach him, by some means or other, the fundamentals of reading, penmanship and math. If Joey is quick, he is encouraged to investigate new fields of interest. Truly these elementary instructors are the hub of the Wheelersburg School System.



And to the Republic for which It Stands . . .



SENIOR CLASS OFFICERS

Joe Watts

Bertha Bennett

Mary Lou Blum

Bud Reese

WITH APOLOGIES

By the banks of old Ohio,
Where the spring floods well-nigh drown us,
In the nigh defuncted village,
Wheelersburg . . . that pearl of places,
Wheelersburg . . . the height of high schools.
Lived therein a group of students,
Faculty and divers others,
Of a rare, coy disposition.
One of these was E. McChesney,
Joy and wonder of the Seniors.
Now he paced about the classroom,
Hands he stuck into his pockets;
From the brow of E. McChesney,
Gone was every trace of amour
As he gazed upon his homeroom,
As of one who in a vision
Sees what is to be, but is not.
Happy, joyful little Seniors,
Throwing each to each the spitball;
Placing soft the up-right thumb tack
On the chair of this their teacher.
Lifted he his hands in horror;
Loud he cried, sans exultation,
"It is well now, O my brother,
That ye go into the office,
That ye pick up the great paddle,
That ye bring it straightward to me.
Many moons and many winters
Will have come and will have vanished,
Ere ye eat your luscious dinner
Sitting downward at the table."

And forsooth no olden prophet
Spake such words of painful portent;
And the Seniors answered saying,
"We have listened to your message,
Felt the sting of yonder paddle,
We will think on what ye tell us.
It is well for us, O brother!"
Came the tolling of the late chimes,
The great chieftain, E. McChesney,
At once spake he, "Get in your seats,
For I check seats and not your faces."
The red-headed Shockyhoho,
Handsomest of all the women,
In the Senior room was sitting.
Now the dashing Donejojo
Enters he upon the sanctum,
Softly takes the seat beside her,
And her eyes are brightly gleaming.
Now the class they have a scandal—
Shockyhoho, the great Smoocher.
Lest ye think this be a tabloid,
Hear us now; we joketh only.
For we love our profs and pupils,
Wouldn't say a thing about 'em!
Hence, farewell, O fellow students,
We shall never more forget thee.
Aim thee true thy fateful spitball,
Aim thee true thy snitched eraser;
And remember, when thou copy,
Sit thee near one of great smartness.
Hence, farewell, O fellow students,
Peace be with you, O our Brethren!

RAYMOND SOMMER: St. Mary's High School 1, Scholarship Team 2-3, Model Airplane Club 2, Radio Club 3, Math Club 4.

LENA HARDIN: Madeira High School 1-2-3, G. A. A. 4, Senior Chorus 4, Sigma Tau Pi 4.

CATHERINE McHENRY: Glee Club 1-2-3-4, Prince of Peace 2-4, Mixed Chorus 3-4, Senior Chorus 4.

GALE CONKLIN: Industrial Arts Club 1-2, Glee Club 2-3, "Hoosier Schoolmaster" 3.



HERBERT DAMRON: Glee Club 1-2, Varsity W. Club 2-3, Basketball 2-3-4.

MARY LOU BLUM: Scholarship Team 1-2-3-4, Class Secretary 1-3-4, Office Force 2-3-4, Glee Club 2-3-4, Annual Staff 2-3-4, "Hoosier Schoolmaster" 3, Senior Chorus 4, Honorary English Society 4, Sigma Tau Pi 4.

BETTY STARK: Band 1-2-3-4, Glee Club 2-3-4, Minstrel 2, Class Secretary 2, Office Force 3, Prince of Peace 3, Sigma Tau Pi 4, "Hoosier Schoolmaster" 3, Library Club 1.

CARL RICE

JOE WATTS: Scholarship 1-2-3, "Hoosier Schoolmaster" 3, Class President 4, Math Club 3, Glee Club 3, Student Council 4, Annual Staff 4.

JANET BAYS: Glee Club 1, Sports Club 1-2-3, Home Ec. Club 1, Dramatic Club 2, Senior Chorus 4, Library Club 4, Sigma Tau Pi 4, G. A. A. 4

NORMALEE YORK: Home Ec. Club 1-2, Glee Club 1-2-4, County Broadcast 2, Mixed Chorus 1-2-4, Senior Chorus 4, Library Club 3-4, Sigma Tau Pi 4.

DONALD WENTE



KENNETH JOHNSON

BERTHA BENNETT: Glee Club 1, Sports Club 1-2, Band 2, Scholarship Team 2, Library Club 2-3-4, Class Treasurer 3-4, "Hoosier Schoolmaster" 3, Math Club 4, Sigma Tau Pi 4, Honorary English Society 4, Senior Chorus 4, G. A. A. 4.

BETTY JO ROSS: Glee Club 1-2-3-4, Office Force 2-3-4, Library Club 2, Booster Club 1, County Festival 1-2-3, Minstrel 2, Glee Club Concert 3.

WANDA HAMMOND: Glee Club 1-2, Sports Club 2, "Hoosier Schoolmaster" 3, Senior Chorus 4, Home Ec. Club 1-2, Library Club 1, Sigma Tau Pi 4.

ALICE MAUCK: Glee Club 1-2-3-4, G. A. A. 2-4, Scholarship Team 2, Minstrel 2, Library Club 2, "Hoosier Schoolmaster" 3, Office Force 3-4, Senior Chorus 4, Honorary English Society 4, Sigma Tau Pi 4.

COLLEEN BURTON: P. H. S. 1, Scholarship Team 2, Office Force 2-3, "Hoosier Schoolmaster" 3, Library Club 2, G. A. A. 2-4, Annual Staff 4, Glee Club 4, Senior Chorus 4, Honorary English Society 4, Sigma Tau Pi 4.

LOIS COOK: Home Ec. Club 1, Glee Club 1-2-3-4, G. A. A. 1-2-3-4, "Pigtails" 2, "Hoosier Schoolmaster" 3, Library Club 2-3, Band 4, Mixed Chorus 3-4, Honorary English Society 4, Sigma Tau Pi 4.

EVELYN SKIVER: Scholarship Team 1-2-3-4, Library Club 2, "Hoosier Schoolmaster" 3, Office Force 4, Annual Staff 4, Sigma Tau Pi 4, Senior Chorus 4, Honorary English Society 4.



JOHN VAN HORN: Glee Club 1-2-3, Varsity W. Club 2-3, Track Team 1-2, Basketball 1-2-4, Operetta 1, Minstrel 2, County Music Festival 1-2, Glee Club Concert 3, Radio Club 3.

ROSE MARY THIEKEN: Home Ec. Club 1-2-3, Library Club 3-4, Senior Chorus 4, Glee Club 1-2-3-4, Mixed Chorus 3-4, "Hoosier Schoolmaster" 3, Sigma Tau Pi 4.

DOROTHY RUSS: Drum Majorette 1-2-3-4, Cheerleader 4, Glee Club 1-4, Band 1-2-3-4, "Pigtails" 2, Class Officer 1-2, County Band 1-2, County Music Festival 2, County Broadcast 2.

EVELYN RIGGS: Booster Club 1, "Hoosier Schoolmaster" 3, Senior Chorus 4, Sigma Tau Pi 4, G. A. A. 4.

HAROLD MUCHA: Band 1-2-3, Varsity W. Club 3, Basketball 1-2-3-4, "Hoosier Schoolmaster" 3, Model Airplane Club 1.

ELOISE COLE: Glee Club 1, Sports Club 2, Home Ec. Club 3, Senior Chorus 4, Annual Staff 4, G. A. A. 4, Honorary English Society 4.

BETTY LOU MILLER: Glee Club 1-2, Library Club 2-3, "Hoosier Schoolmaster" 3, G. A. A. 1-2-3-4, Senior Chorus 4, Annual Staff 4, Office Force 4, Sigma Tau Pi 4, Honorary English Society 4.

BUD REESE: Class Vice President 4, Glee Club 3-4, "Hoosier Schoolmaster" 3, Honorary English Society 4, Math Club 4, Mixed Chorus 3-4, Model Airplane Club 1-2, Radio Club 3, Scholarship Team 3.



MARTHA CARTER: Band 1-2-3-4, Glee Club 3-4, County Band 2-3, Office Force 3-4, Booster Club 1, Library Club 2, Music Festival 2, County Broadcast 2, Home Ec. Club 1, Latin Club 2, G.A.A. 1-4, Senior Chorus 4, Sigma Tau Pi 4.

EARLENE ARTHUR: Library Club 1-2, Glee Club 1-4, Senior Chorus 4.

DOROTHY SMITH: Glee Club 1-2-4, Home Ec. Club 1-2, Sports Club 1-2-4, Mixed Chorus 4, Senior Chorus 4, Sigma Tau Pi 4.

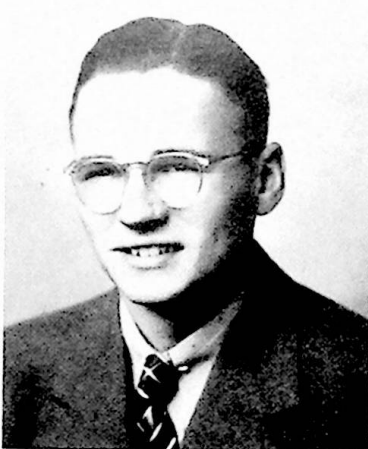
JANET MAY: Glee Club 1-2-3-4, Scholarship Team 2, Senior Chorus 4, Honorary English Society 4, Sigma Tau Pi 4, Annual Staff 4.

CHARLENE HOBSON: Band 1-2-3-4, Glee Club 1-2-3-4, County Music Festival 1-2, County Broadcast 1-2, Booster Club 1-2, Minstrel 2, Sigma Tau Pi 4, Senior Chorus 4, G. A. A. 4.

DOROTHY REED: Glee Club 1, Sports Club 1-2-3, Home Ec. Club 1, Dramatic Club 2, Sigma Tau Pi 4.

PAUL SCHERER: Glee Club 1-2-3, Varsity W. Club 3, Booster Club 1, Basketball Manager 3, Track Manager 3, Industrial Arts Club 2, Radio Club 3.

BETTY ABBOTT: Home Ec. Club 1-2-3, Glee Club 1-4, Senior Chorus 4, Mixed Chorus 4.



JOHN ADKINS: Basketball 1-2-3-4, Glee Club 2-3, Minstrel 2, Industrial Arts Club 3, "Hoosier Schoolmaster" 3, Baseball 3, Office Force 4, County Music Festival 2, Annual Staff 4.

FREDA STEPHENSON: Home Ec. Club 1-2-3, Library Club 3-4, Senior Chorus 4, Sigma Tau Pi 4.

JOAN LeMASTER: Library Club 2, Office Force 3, "Honsier Schoolmaster" 3, Annual Staff 4, Senior Chorus 4, Sigma Tau Pi 4.

MARILYN FRITZ MILLER







JUNIORS

First Row: *Earl Burgess, Wanda Burke, Bill Cook, Bob Craft, Lucille Davis, Stanley Dutiell, Bob Evans.*

Second Row: *Janice Frowine, Mary Lou Gilpin, Norma Jean Glascock, Martha Gleim, Marcella Gose, June Fraley, Bob Hall.*

Third Row: *Henry Hansgen, Virginia Hardin, Juanita Hay, Phyllis Hilton, Barbara Howard, Gene Johnson, Pauline Justice.*

Fourth Row: *Arlene Kegley, Lilly Kidd, Junior Lewis, Thelma Lyon, Oval May, Ethel Messer, Janice Minor.*



JUNIORS

- First Row: *Wellma Moore, Bill Orlett, Lowell Polley, Lester Purtee, Phyllis Reidenbach, Juanita Rice, Ruth Riddlebarger.*
- Second Row: *Maxine Risner, Robert Rogers, Wallace Ruggles, June Ruth, Martha Sampson, Jim Saul, Harold Shingler.*
- Third Row: *Loretta Skiver, Janet Smith, Fred Sommer, Jean Stanley, June Stevison, Francis Thieken, Betty Turner.*
- Fourth Row: *Edith Turner, Lila Lee Underwood, Helen Waters, Ray Welch, Ebert Williams, Shirley Wilhoite, Wilda Willis.*



SOPHOMORES

- First Row: *Jean Bailey, Walter Barker, Gene Bennett, Carl Besco, Roberta Blair, Wilma Bradley, David Browning, Anna Burgess.*
- Second Row: *Herbert Carver, Donald Chamberlain, Otis Christian, Ray Conley, Leslie Cramer, David Craycraft, Donald Cregger, Billy Dials.*
- Third Row: *Marjean Evans, Faye Fraley, Wanda Fraley, Earl Frazie, Chester Gallion, Shirlene Gallion, Kathleen Gleim, Velma Gleim.*
- Fourth Row: *Joyce Hahn, Zenna Harrison, Emma Jean Herbst, Robert Johnson, Gene Lawson, Oral Maggard, Normalee Maple, Wilbur Mauck.*



SOPHOMORES

First Row: *John Miller, Janet Molen, Bob Morgan, Barbara Noel, Carolyn Overholtzer, Pauline Pace, Betty Pollock, Reatha Ratcliff.*

Second Row: *Ted Reese, Imogene Salley, Mary Sampson, Charles Setters, John Sherman, Betty Skaggs, George Smith, Esther Snyder,*

Third Row: *John Sommer, Bob Sparks, Lowell Staker, Ruby Stamper, Ruth Stamper, Helen Stanley, Carl Strickland, Donald Thieken.*

Fourth Row: *Mary Thieken, Lois Thompson, Jim Turner, Mary Van Horn, Virginia Watts, Karen Werner, Bob Wright, Vern Young.*



FRESHMEN

First Row: *Ethel Adams, Ada Barber, Don Billups, Norma Bennett, Joyce Benson, Marie Booth, Mary Born, Paul Brown.*

Second Row: *Ronald Brown, Judy Carter, Lloyd Caudill, Wilma Chandler, Forrest Colegrove, Paul Compliment, Christine Conley, Phyllis Drake.*

Third Row: *Ed Evans, Betty Jane Fraley, Juanita Fraley, Joe Hahn, Charles Hall, Robert Hammond, Grace Hannah, Gwendolyn Hansgen.*

Fourth Row: *John Hardin, Ada Harper, Alma Harper, Beulah Harrison, Charles Hatten, Denny Hay, Richard Harner, Loraine Howard.*

Fifth Row: *Joyce Johnson, Wilma Johnson, Jean Jones, Mary Ann Ketter, Karl Kinker, Delores Knapp, Albert Layberger, Harold Lawson.*



FRESHMEN

- First Row: Kathleen Lee, Della Lewis, Elfie Loper, Raymond Lykins, Wilma Markins, James Mauck, Eulanell McCleese, Howard McHenry.
- Second Row: Joan Mineer, Norma Jean Montavon, Lloyd Mucha, Richard Munyon, Stanley Myers, Lucille Ockerman, Marcella Ockerman, Grenville Phipps.
- Third Row: Jeanne Purtee, Betty Price, Barbara Reidenbach, Norman Reiter, Nelly Rice, Helen Riggs, Ralph Roberts, Dorothea Rogers.
- Fourth Row: June Schofield, Bill Selby, Clara Skaggs, Willa Jean Staggs, Ralph Staten, Lawrence Thieken, Lucille Townsend, Forrest Turner.
- Fifth Row: Ena Mae Wagner, Betty Lou Williams, Edward Williams, Kathleen Williams, Raymond Woodrum, Bill Workman, Barbara Wright, Junior Wright.



EIGHTH GRADE

- First Row: *Dottie Abbott, Maxine Bailey, Jean Bihl, Irene Blair, Raymond Brisker, Anna Burgess, Tresa Burgess, Donna Burke.*
- Second Row: *Russell Colegrove, Delores Cramer, Betty Dials, John Donohew, Earl Downs, Betty Fisher, Nick Felty, Robert Flannagan.*
- Third Row: *James Glascock, Ralph Greene, Thelma Hay, Katherine Hinds, Donald Hoover, Imogene Hull, Geraldine Jarvis, Norma Johnson.*
- Fourth Row: *June Kelly, Geneva Keeton, Bobby Lee Klingman, Joanne Lallow, Phyllis Lang, James Lawson, Helen LeMaster, Opal Maggard.*



EIGHTH GRADE

First Row: *David McCarty, Jane McLeod, Doris McFerren, Donald Miller, Betty Moore, Mary Ann Moore, James Morrison, Ruth Mucha.*

Second Row: *Carl Pierce, Bob Reese, Rutledge Ridings, Thelma Rockwell, Lovell Ruggles, Georgia Salley, Bob Sampson, Bobby Joe Scherer.*

Third Row: *Dave Shaffer, Ralph Shaffer, Edward Shelton, Bill Simon, Maxine Staggs, Betty Stanley, Bob Stidham, Langley Tackett.*

Fourth Row: *Charles Thompson, Juanita Weidner, Gene Welch, Eldon Wilder, Karl Willard, Darlene Wright, Joann Wright, Norma Yeley.*



SEVENTH GRADE

First Row: *Carol Abbott, Geraldine Bailey, James Bennett, James Benson, Kathleen Birchem, Beulah Blevins, Betty Bond, Betty Lou Booth.*

Second Row: *Mildred Bryant, Billy Caudill, Lilly Coe, Rose Mary Collingsworth, Raymond Conley, Glen Coriell, Grace Crabtree, Hazel Craft.*

Third Row: *Maurice Cremeans, Robert Delabar, Patty Dold, Donnie Ellis, James Evans, Patricia Fairchild, Ralph Frazie, Royal Fritz.*

Fourth Row: *Willa Jean Gallion, Donald Gleim, Maurita Gleim, Phyllis Gose, Charlotte Green, Kenneth Green, Billy Hall, Gerald Hall.*

Fifth Row: *Kathryn Hammond, Harry Hardin, Joe Hibbitts, John Hill, Virgil Hill, Bill Holt, Jewell Jarvis, Betty Jenkins.*



SEVENTH GRADE

First Row: *James Kidd, Irene Leadingham, Jack LeMaster, Neil LeMaster, Rex LeMaster, Norma Lykins, Bobby Mauck, Geneva McCaslin.*

Second Row: *Eugene McCoy, Paul Means, Joe Merrill, Patty Miller, Ruby Morrison, Wilma Mullins, Billy Nelson, Rosaline Phipps.*

Third Row: *James Pierce, Joanna Purtee, Robert Pyles, William Quillen, Jesse Ramey, Betty Riffle, Paul Riggs, Lillian Sagraves.*

Fourth Row: *Paul Setters, Lucy Skaggs, Adrian Sloan, David Sommer, Mary Ann Smith, Sidney Smith, Juanita Staggs, Delores Storey.*

Fifth Row: *Barbara Thompson, Janet Turner, Joe Turner, Geneva Webb, Clarence Wente, Louise Wheeler, Ernest Williams, Jimmy Woodrum.*



One Nation Indivisible . . .



One Nation Indivisible . . .



Top Row: Lowell Staker, Harold Mucha, Gene Bennett, Leslie Cramer, Joyce Hahn, Walter Barker. Middle Row: Mr. Schneider, Gene Lawson, Ray Conley, John Adkins, Henry Hansaen, Chester Gallion, Mr. Preston, Charles Zuhars. Bottom Row: Bob Morgan, Ted Reese, John VanHorn, Earl Miller, Herbert Damron, Harold Shingler, David Craycraft, Gene Johnson.

BASKETBALL

Game Listings:

		Varsity		Reserves	
		We	They	We	They
Nov. 6	McDermott	31	26	42	6
Nov. 10	Otway	61	29	29	6
Nov. 13	South Webster	43	18	30	7
Nov. 19	Green	25	33	23	2
Nov. 23	Washington	30	36	13	11
Dec. 3	Lucasville	34	26	30	11
Dec. 10	New Boston	28	22	23	12
Dec. 14	Sciotoville	32	36	11	17
Dec. 17	Minford	31	23	31	7
Dec. 21	Clay	21	22	37	21
Jan. 7	Lucasville	67	26	41	11
Jan. 14	Minford	20	23	29	8
Jan. 20	Washington	42	40	22	19
Jan. 22	Clay	31	19	36	11
Jan. 28	McDermott	34	27	31	10
Feb. 4	Otway	85	17	69	9
Feb. 8	Sciotoville	35	31	19	12
Feb. 11	Green	35	29	26	14
Feb. 17	New Boston	44	28	26	24
Feb. 19	South Webster	60	22	39	19



VARSITY BASKETBALL

Top Row:

*Harold Mucha
Ray Conley
John Adkins
Henry Hansgen*

Bottom Row:

*Mr. Schneider
John VanHorn
Earl Miller
Herbert Damron
Harold Shingler
Mr. Preston*

Reserves

Lawson	F.	128	Points
Bennett	G.	125	"
Cramer	C.	108	"
Craycraft	G.	102	"
Staker	F.	75	"
Gallion	F.	67	"
Hahn	G.	20	"
Barker	G.	10	"
Total Points		635	"
Average points per game		30	"
Opponents total points		235	"
Average points per game		12	"

Varsity

Shingler	F.	204	Points
Damron	C.	181	"
Hansgen	G.	103	"
Miller	F.	84	"
Conley	G.	59	"
VanHorn	G.	56	"
Adkins	G.	49	"
Mucha	C.	12	"
Total Points		748	"
Average points per game		39	"
Opponents total points		479	"
Average points per game		25	"

RESERVE BASKETBALL

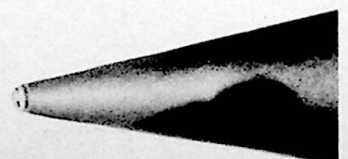
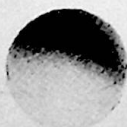
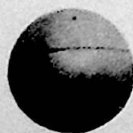
Top Row:

*Gene Lawson
Joyce Hahn
Chester Gallion*

Bottom Row:

*Mr. Schneider
David Craycraft
Lowell Staker
Leslie Cramer
Gene Bennett
Mr. Preston*





CLASS OF SERVICE DESIRED	
DOMESTIC	CABLE
TELEGRAM <input checked="" type="checkbox"/>	ORDINARY <input type="checkbox"/>
DAY LETTER <input type="checkbox"/>	URGENT RATE <input checked="" type="checkbox"/>
SERIAL <input type="checkbox"/>	DEFERRED <input type="checkbox"/>
NIGHT LETTER <input type="checkbox"/>	NIGHT LETTER <input type="checkbox"/>
SPECIAL SERVICE <input checked="" type="checkbox"/>	SHIP RADIOGRAM <input type="checkbox"/>

Patrons should check class of service desired, otherwise the message will be transmitted as a telegram or ordinary cablegram.

WESTERN UNION

R. B. WHITE
PRESIDENT

NEWCOMB CARLTON
CHAIRMAN OF THE BOARD

J. C. WILLEVER
FIRST VICE-PRESIDENT

CHECK
ACCOUNTING INFORMATION
TIME FILED



e terms on back hereof, which are hereby agreed to
 PEOPLE OF PORTER TOWNSHIP
 SCIOTO COUNTY, OHIO
 UNITED STATES OF AMERICA

WHEELERSBURG VARSITY VICTORS OF SCIOTO COUNTY
 TOURNAMENT STOP OPPONENTS LED SCORING TILL
 LAST FIVE MINUTES OF GAME STOP WHEELERSBURG
 SNAPPED OUT OF IT TO WIN WITH A 28-22 VICTORY STOP

MINIATURE MANAGER

CLASS OF SERVICE DESIRED	
DOMESTIC	FOREIGN
TELEGRAM <input type="checkbox"/>	FULL RATE CABLE <input type="checkbox"/>
DAY LETTER <input type="checkbox"/>	DEFERRED CABLE <input type="checkbox"/>
NIGHT MESSAGE <input type="checkbox"/>	NIGHT CABLE LETTER <input type="checkbox"/>
NIGHT LETTER <input type="checkbox"/>	WEEK END CABLE LETTER <input type="checkbox"/>
SHIP RADIOGRAM <input checked="" type="checkbox"/>	RADIOGRAM <input checked="" type="checkbox"/>

Patrons should check class of service desired otherwise message will be transmitted as a full-rate communication.

Postal Telegraph

THE INTERNATIONAL SYSTEM

Commercial
Cables



All America
Cables

Hackaw

Radio

RECEIVER'S NUMBER
CHECK
TIME FILED

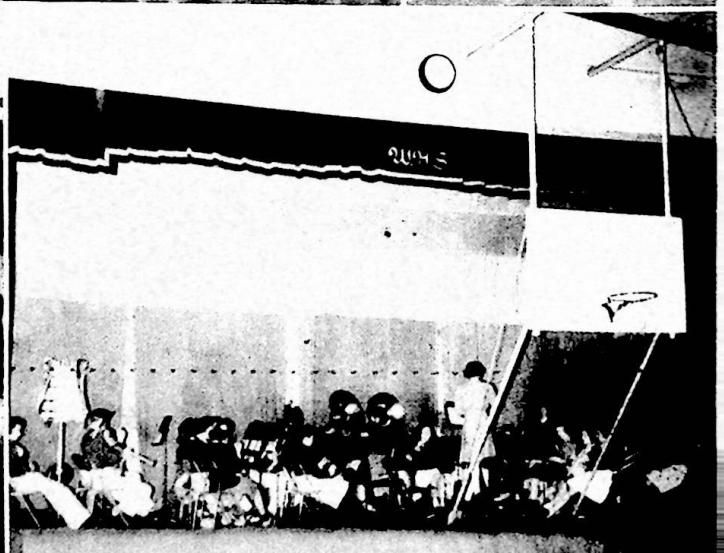
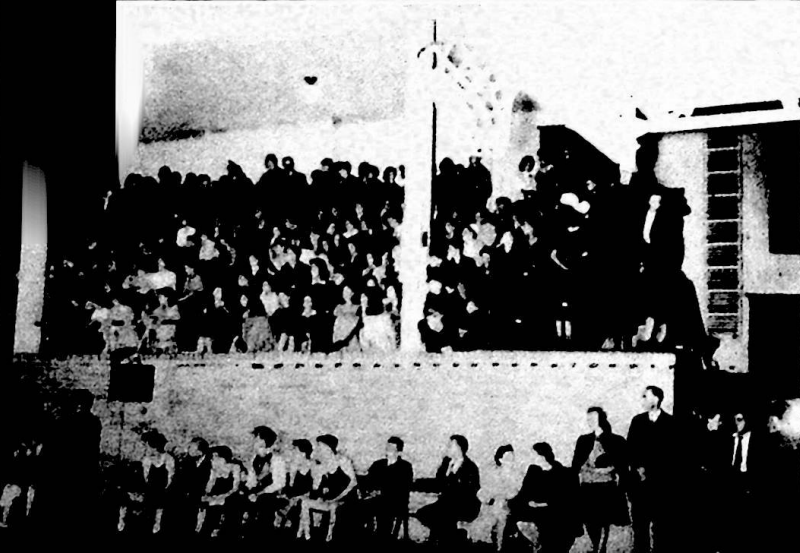
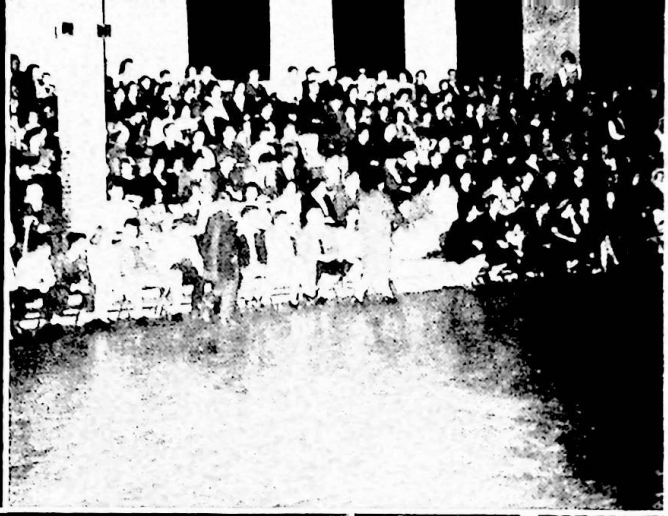
Send the following message, subject to the terms on back hereof, which are hereby agreed to

PEOPLE OF PORTER TOWNSHIP
 SCIOTO COUNTY, OHIO
 UNITED STATES OF AMERICA

WHEELERSBURG VARSITY WINS WAY TO SECTIONAL
 TOURNAMENT STOP OPPONENTS TRYING TO BREAK
 THROUGH OUR LINES BUT DUE TO OUR REENFORCEMENTS
 OPPONENTS CHANCES SLIM STOP

MINIATURE MANAGER







With Liberty and Justice for All

MARES EAT OATS AND DOES EAT OATS AND HOME EC GIRLS EAT—

Any chickens missing in Wheelersburg? W-e-l-l, Miss Distel's Sophomores were caught red-handed with the booty by the photographers. It's a fact—caught in the very act of turning on the heat under the ole bird! Maybe those girls didn't have exultant looks on their faces. And that's not all—they didn't ask the photographers to join them.

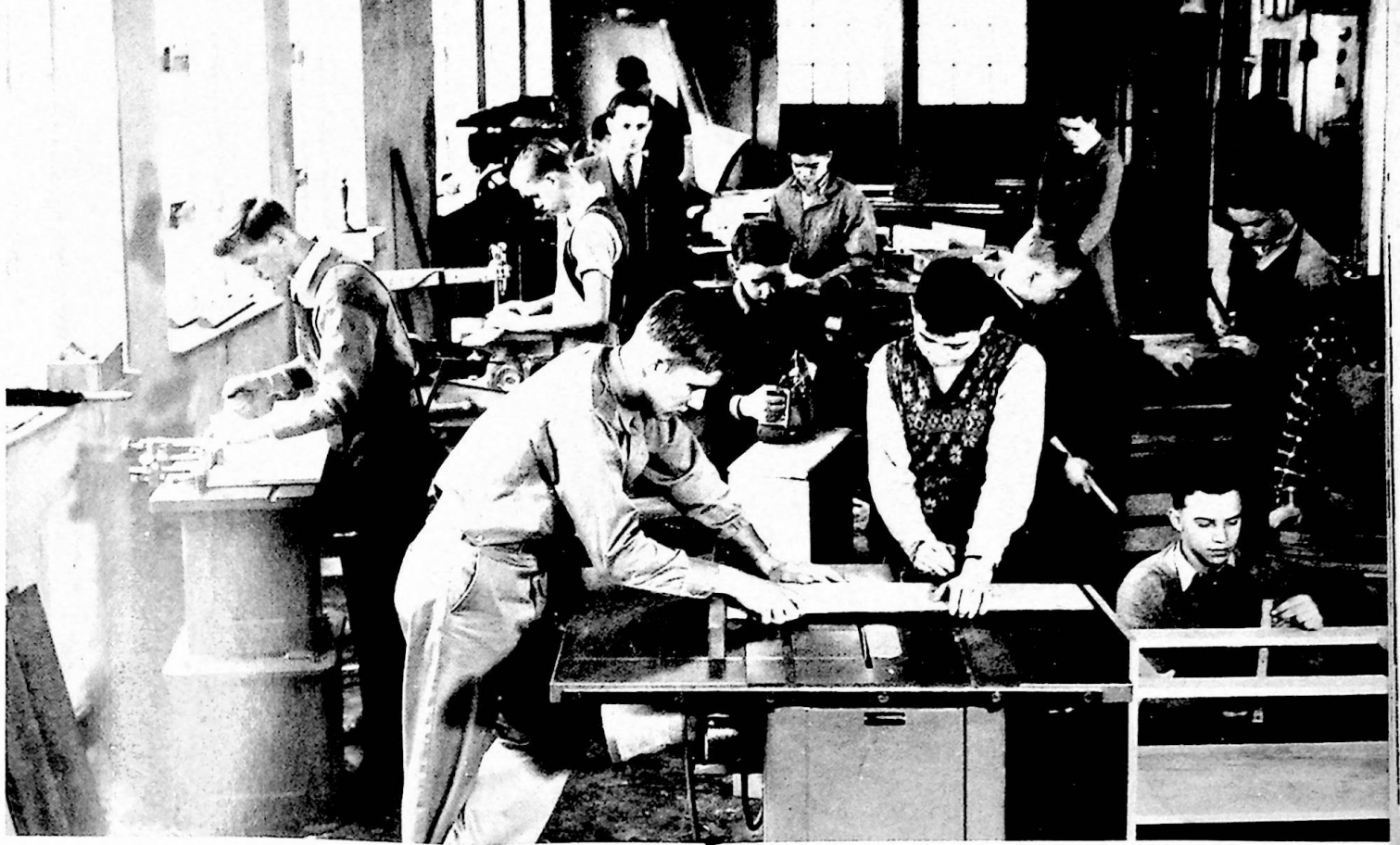
If you had visited Wheelersburg High School in the fall the first two periods of the day, in all probability you would have come in contact with some peculiar odors. That would be the Sophomore girls going through the routine of cooking.

At first they had a difficult time. We all remember very distinctly the day they burned their pancakes. But now, under the guidance of Miss Distel, they have improved greatly. To prove this we have here a list of foods served at a recent dinner. They are as follows: steak, pork chops (some of the guests refused to eat steak); mashed potatoes with gravy, green beans, creamed corn, peas and carrots; hot rolls (yum, yum); deviled eggs and tossed salad; peaches and cake with whipped cream; milk—bicarbonate of soda on the house.

HOME ECONOMICS LAB

Left to Right: Helen Stanley, Blanche Hacker, Ruth Stamper, Zenna Harrison, Shirlene Gallion, Karen Werner, Imogene Salley, Anna Pearl Burgess, Janet Molen, Betty Skaggs, Mary Thieken, Ruby Stamper, Miss Distel and Mary Lou York.





Left to Right: Ray Conley, Charles Setters, Mr. McChesney, Orville Smith, Leslie Cramer, Donald Thieken, Otis Christian, David Craycraft, George Smith, Carl Besco, Donald Cregger, Vern Young, John Sommer, Donald Chamberlain.

INDUSTRIAL ARTS LAB

A WORKSHOP IS—

A fourwalled contraption where any manufacture or handiwork is carried on. Most workshops have instructors and students. However, a few exceptions are made—private workshops or those operated by individuals. Maybe we should explain the meaning of the expressions, instructors and students. An instructor is a critter somewhat like unto a professor in the respect that he has a beard and wears glasses. He usually stands in the front of the workshop with a stack of blueprints and lectures for forty-five minutes or longer if he chooses. Students? Oh, they are the quiet, angelic souls who sit with pencils in their mouths during the lecture and then get up and walk out of the shop as unlearned as ever. (Please, Mr. Mac, we're just trying to be clever.)

There is much to be said for a workshop. It is a place of blueprints, hammers, nails, wood shavings, paint, glue, grating metal, mashed fingers and iodine, and oh, yes, we shouldn't forget to mention the peace and quiet.

If you are on the verge of a nervous breakdown and the doctor recommends a rest for you, be sure to visit a workshop. On your tour of the workshop, start with the raw lumber and make the rounds of the different departments of labor. See the lathe, wood plane, etc. in operation. By the time you have reached the spray booth where the finishing touches are applied, you'll be a guest at Athens—a most willing guest, we assure you!





ANNUAL STAFF

Standing, left to right: *Betty Jo Ross, Mr. Schneider, Joe Watts, Miss Shepherd, Miss Richards, Janet May, Miss Sheila.* Seated, left to right: *Eloise Cole, Betty Lou Miller, Colleen Burton, Mary Lou Blum, Evelyn Skiver, John Adkins.*

OFFICE FORCE

Standing, left to right: *Mr. Smith, Norma Montavon, Mary VanHorn, Jean Stanley, Loretta Skiver, Evelyn Skiver, Alice Mauck, Faye Fraley.*

Seated, background: *Betty Jo Ross, June Stevisan, Mary Lou Blum, Phyllis Reidenbach.*

Seated, foreground: *Betty Lou Miller, Martha Carter.*



Each member of the Honorary Math Club must have attained an average of at least 90 in any of the fields of algebra, geometry, or trigonometry. The 1943-44 club was organized with Leslie Cramer as chairman, Forrest Colegrove as vice chairman, and Virginia Hardin as secretary-treasurer.

The purpose of the club is to further academic pursuits related to mathematics. The meetings are held semi-monthly.

This year the chief interests have been concerned with military mathematics and astronomy. The high-spot of the club's social functions was the annual party at which the Honorary English Club members were guests.

MATH CLUB

First row: Betty Pollock, Mr. See, Leslie Cramer, Mary VanHorn.

Second row: Bertha Bennett, Virginia Hardin, Marie Booth, Mary Lou Blum, Norma Montavon, Martha Sampson, Kathleen Gleim, Mary Sampson, Ada Barber.

Third row: Richard Harner, John Sherman, Bud Reese, Lowell Staker, Ted Reese, Raymond Sommer.





VISUAL EDUCATION

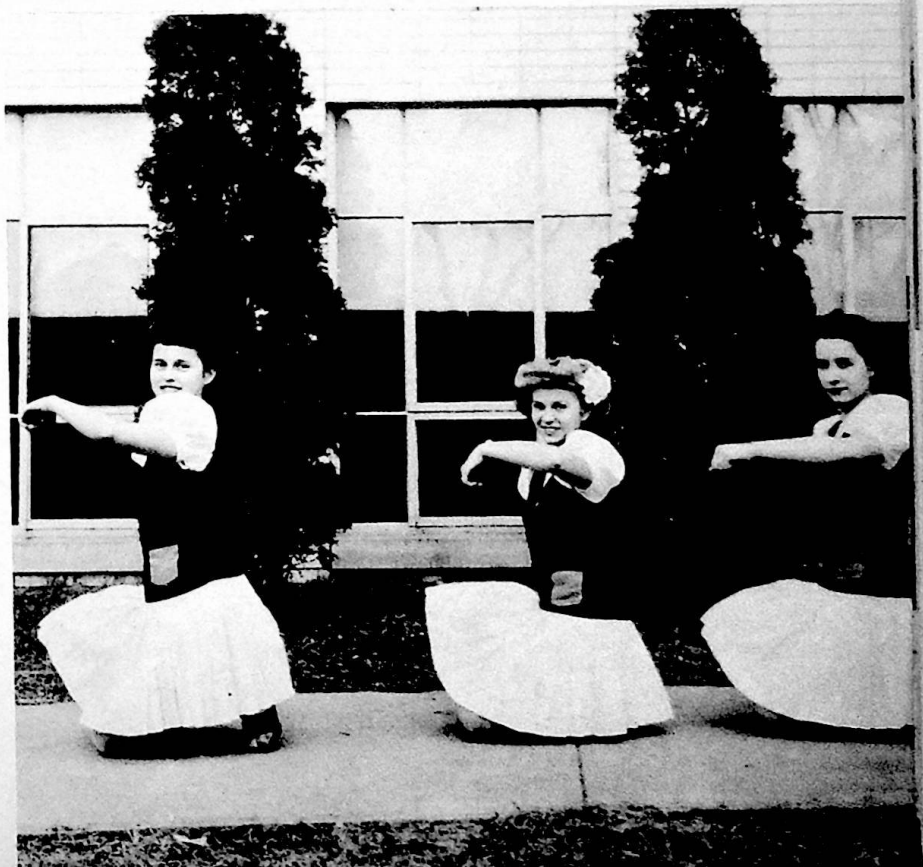
Every week Wheelersburg High School presents a motion picture to the students. The topics of these films are: government, history, aviation, health, forestry, agriculture, nature and science. The film is presented by the Ohio Department of Education free of charge, and the students enjoy having a good time in addition to becoming painlessly educated.

Cheerleaders

W-H-E-E-L-E-R-S-B-U-R-G

"That's the way you spell it—!"

We're on the griddle
and the griddle is hot—
We can't lose with
the stuff we got.
When you're up,
you're up,
When you're down,
you're down,
When you're up against
Wheelersburg,
You're upside down.
Clap your hands!
Stomp your feet!
Wheelersburg cheerleaders
can't be beat!





PRINCE OF PEACE

"All the peoples of the earth, victor and vanquished, Christian and Jew, white man and black, rich man and poor look to America—"

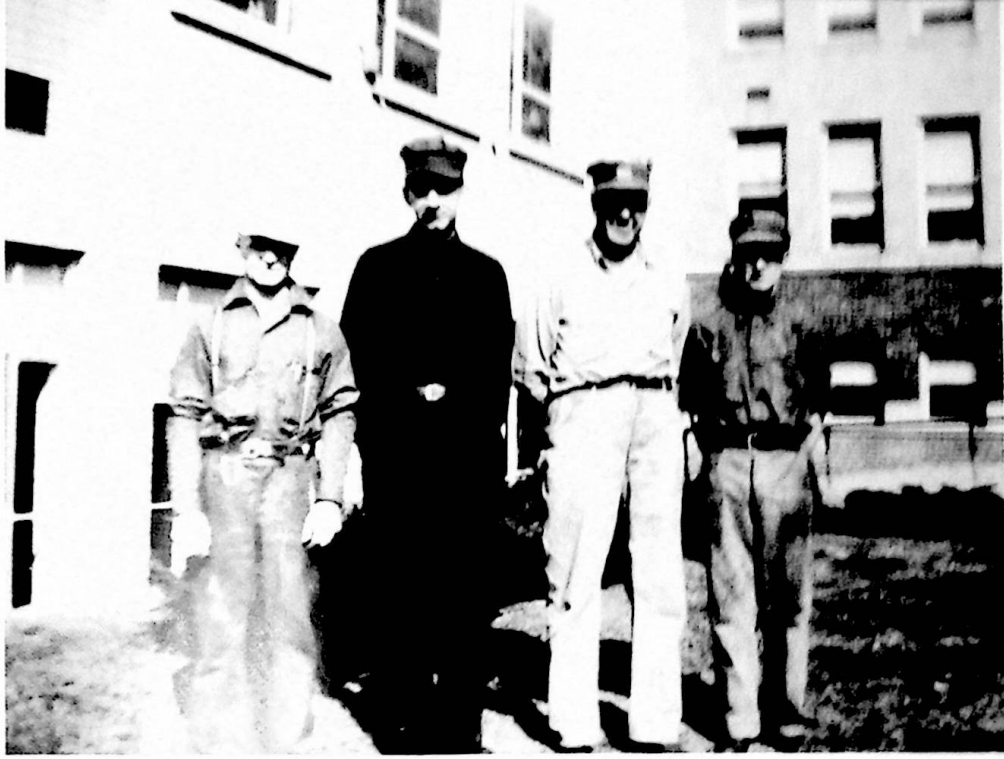
The Prince of Peace Declamation Contest, sponsored by the Ohio Council of Churches, was held at the Wheelersburg Methodist Church. The contest was open to boys and girls of fourteen to eighteen years of age not yet in college.

Catherine McHenry and Helen Waters were the contestants from this district. Their speeches were "America on Signal Hill" and "A Bag of Beans." The girls, coached by Miss Shela, worked diligently as they had had no previous instruction in public speaking. Catherine McHenry won the bronze metal given by Wheelersburg and, in the Portsmouth competition, placed second in the county.

STUDENT COUNCIL

Standing, back row: Joyce Hahn, Ted Reese, Ray Conley, Forrest Turner, Russell Colegrove, James Lawson. Standing, middle row: Sydney Smith, Royal Fritz, Mary Ann Ketter, Betty Pollock, Mary Lou Gilpin, Phyllis Reidenbach, Betty Turner, Nova Sexton, Juanita Weidner, Joe Hibbitts. Seated, front row: Mary Lou Blum, Joe Watts, Mr. Smith, Bud Reese, Bertha Bennett.





JANITORS

Left to Right
Spurgeon Vanhoose
Edward Duduit
John Edwards
William Cunningham

BUS DRIVERS

E. E. Gleim

J. F. Warner

C. F. Fritz

C. C. Conklin



The students of our school who are interested in library work have once more formed the Library Club. This club has charge of a large number of reference volumes to assist the students, as well as a great many books for pleasure reading. It has magazines under its supervision, also. At the beginning of the period any student who is to be in the study hall may get a magazine to keep him out of trouble. (Usually it doesn't work.) This makes more work for our librarians since it is their job to get all these magazines back to the library before the classes change.

This group meets once a week to discuss business. The members of this organization also have social gatherings. The first social event of this season was a weiner roast at the roadside park. On February 15, 1944, the group had a supper in the home economics laboratory. To raise money for their club, the members gave a luncheon for the faculty on March 1.

The officers this year were very well chosen. They are as follows: Normalee York, president; Rose Mary Thieken, vice president; and Barbara Reidenbach, secretary-treasurer.

As one can see, the Library Club is making rapid progress under the capable leadership of Miss Humphrey.

LIBRARY CLUB

Front Row, left to right: Miss Humphrey, Kathleen Williams, Norma Lee York, Jean Chandler, Jean Bailey, Jeanne Purtee, Betty Lou Williams, Karl Kinker. Second Row: Joyce Johnson, Velma Gleim, Barbara Reidenbach, Jane Lyon, Mary Ann Ketter. Third row: Harold Lawson, Bertha Bennett, Janet Bays, Freda Stephenson, Wilbur Mauck, Rose Mary Thieken





CHRISTMAS STORY

The annual Christmas program given by the Wheelersburg grade pupils was presented December 23, 1943, in the high school auditorium.

The production, "A Story of Christmas," was a narrative of the journey by the wise men to Bethlehem and the birth of the baby Jesus.

"Rise up, Shepherd, and Foller", an interesting yuletide folk song, was sung by Buster Lee, followed by "Angel Song", a solo by Eileen Perkins. There were also several Christmas songs by the entire cast, the children being accompanied by Miss Groh.

This program was presented before an afternoon and an evening audience and showed clearly the results of excellent coaching by the elementary faculty.



The Girls' Glee Club, composed of fifty members, is under the direction of Mrs. Webster Sill. They meet the third period every Thursday and have performed on different occasions. On December 23 they sang Christmas Carols at the request of the Chamber of Commerce and have also presented several interesting programs to the student body. Anyone who doesn't believe these girls can sing should come down to room four some Thursday morning and he'll get the surprise of a lifetime. Isn't that right, girls?

A subdivision of the Girls' Glee Club is a chorus composed of only Senior girls. This organization meets twice a week to sing popular songs. The girls take great interest in this work. The Chorus is rehearsing for the presentation of an assembly in which they plan to sing their own versions of several songs.

The Boys' Glee Club is made up of twenty-four members and is also under the direction of Mrs. Sill. The boys practice every Thursday the fourth period, and their singing has improved greatly since the first of the year.

Combined, these girls and boys make up the Mixed Chorus. They supply the music for the baccalaureate service and help present the different programs. Accompanied by Norma Jean Stanley, this chorus has accomplished much this year. On April 14 the mixed choral group and band presented a concert; and a most enjoyable evening it was, too. But we need say no more. If you were there, you know what happened "Under a Parasol".

VOCAL MUSIC

Top row, standing: Kathleen Williams, Martha Carter, Betty Jo Ross, Norma Lee York, Janet Molen, Norma Jean Montavon, Alice Mauck, Colleen Burton, Mary VanHorn, Ramona Scott, Mary Lou Blum, Betty Stark. Second row, standing: Wanda Hammond, Earlene Arthurs, Dorothy Russ, Elfie Loper, June Schofield, Ruth Riddlebarger, Janet May, Shirlene Gallion, Betty Pollock, Anna Pearl Burgess, Pauline Pace, Lois Thompson, June Stevison. Third row, seated: Mrs. Sill, Marcella Gose, Dorothy Smith, Betty Abbott, Eulanell McCleese, Willa Jean Staggs, Betty Turner, Lucille Davis, Kathleen Lee, Alma Harper, Joyce Johnson, Jane Lyon, Ada Harper. Bottom row, seated: Charlene Hobson, Virginia Watts, Rose Mary Thieken, Barbara Reidenbach, Norma Jean Stanley, Mary Lou Gilpin, Maxine Risner, Jean Bailey, Mary Jane Bowen, Jeanne Purtee, Gwendolyn Hansgen, Lois Cook.





First Row J. Smith, J. Lemaster, J. Glascock, J. Bennett, J. Lawson, R. Klingman, B. Scherer, R. Conley, B. Turner, T. Lyon L. Cook. Second Row L. Staker, B. Pollock, B. Reidenbach, J. Lyon, J. Carter, N. Lykins, C. Hobson, M. Carter, M. VanHorn, B. Stark, W. Lewis, R. Craft. Third Row: Mrs. Sill, L. Davis, W. Willis, G. Hansgen, J. Fraley, R. Riddlebarger, N. Montavon, K. Williams, R. Scott. Fourth Row: E. Evans, P. Brown, H. Carver, N. Felty, P. Compliment, K. Kinker.

B A N D

The band has done well this year under the direction of Mrs. Sill. She has worked hard and has had to train many new members. This has been difficult to do but successfully accomplished by dint of much hard work. The band consists of clarinets, trumpets, trombones, baritones, French horns, bells and drums. A period once a week is devoted to rehearsal of each section.

As Mrs. Sill's time is divided between two schools, she is to be commended for her ability in directing our band. The members have cooperated with Mrs. Sill and have taken a great interest in the band.

The drum majorettes are well trained and play their parts well. They have performed at the basketball games on different occasions and have made a good appearance.

The officers include: Junior Lewis, president; Thelma Lyon, secretary; Betty Stark and Lowell Staker, librarians. They have done much to help the band.

The second band is improving noticeably and will play an important part in the future of the school entertainments. With the help of Mrs. Sill, the first and second band will work together to provide the best of music for the community.

"From each great church and humble chapel the Voice is stirring. It chants of youth and gallant challenge to the future and faith that rises high above old doubts and past generation blunders."



IN MEMORIAM

HERBERT W. RICE
Private First Class

*Killed in North Africa
November 28, 1942
Awarded Purple Heart*

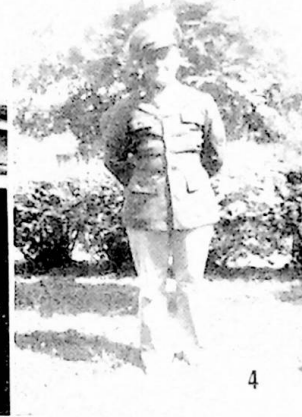
ROYDEN WRIGHT
Seaman First Class

*Killed in Solomon Islands
September 5, 1943
Awarded Purple Heart*





1. Stuart Allen Johnson, Seaman First Class. 2. Richard McLeod, Seaman Second Class. 3. Claude B. Munyon, Jr., Apprentice Seaman. 4. Foote Johnson, Aviation Machinist's Mate Second Class. 5. John Mauck, Staff Sergeant. 6. James LeMaster, Private. 7. Harland Smith, Private. 8. Jack Hobson, Machinist's Mate Second Class. 9. Jennings Ferguson, Seaman Second Class. 10. Ralph Davis, Fireman First Class. 11. Lester Smith, Fireman First Class. 12. Hazel M. McClure, Lieutenant. 13. Bernard Reed, Private. 14. Challis Knapp, Technician Fifth Grade. 15. Wells Mitchell Preston, Corporal.



1. George Arthur, Technical Sergeant. 2. John K. Perdue, Air Cadet. 3. Ned Wilhoite, Seaman First Class. 4. Bill Noble, Staff Sergeant. 5. James Lallow, Private First Class. 6. Paul M. Payne, Corporal. 7. Roy C. Perdue, Sergeant. 8. Ralph Fritz, Technical Corporal; Richard Fritz, Technical Corporal. 9. Arthur Bennett, Gunner's Mate Third Class. 10. Annabel Zeek, Corporal; Robert M. Zeek, Lieutenant. 11. Donald Groh, Pharmacist's Mate First Class.



1. Edgar Montavon, Seaman Second Class. 2. Richard Smith, Jr., Fireman First Class. 3. Bill Young, Seaman Second Class. 4. John Hibbitts, Staff Sergeant. 5. Raymond Montavon, Private. 6. Kermit Edwards, Electrician's Mate Second Class. 7. Robert Montavon, Technical Sergeant. 8. Paul Gleim, Private. 9. Fred Burnside, Sergeant. 10. Charles Hall, Seaman First Class. 11. Charles Woodrum, Machinist's Mate. 12. Kenneth Bays, Sergeant. 13. David Smith, Seaman First Class. 14. Glen Smith, Seaman Second Class. 15. Alfred Zuhars, Private.



1



2



3



5



6



4



9



7

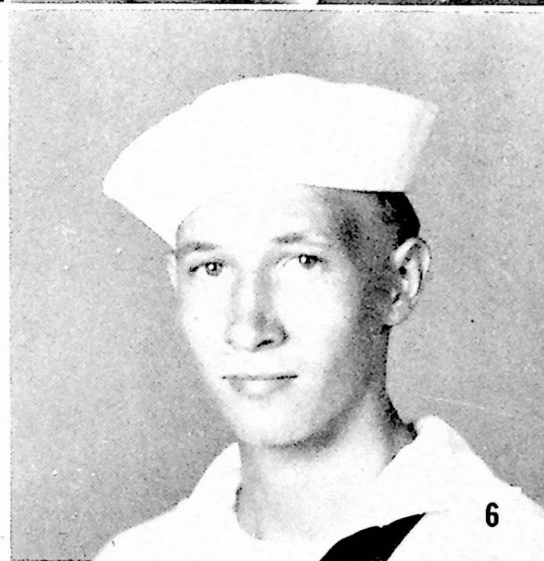


10



11

1. Ted Townsend, Private. 2. Ralph Townsend, Sergeant. 3. Oscar Huffman, Boatswain's Mate First Class. 4. Otis Dutiell, Corporal. 5. Bill Turner, Gunner's Mate Second Class. 6. Albert Blum, Corporal. 7. Mike Risner, Aviation Ordnance Machinisi's Mate Second Class. 8. Bob Molen, Petty Officer First Class. 9. Cornell Fritz, Private. 10. Donald Garrett, Private. 11. Harold Sagraves, Technical Sergeant.



1. Glen Leadingham, Ensign

2. Andy Hopkins, Staff Sergeant

3. George Hopkins, Hospital Attachment, First Class

4. Eugene Vanhoose, Private

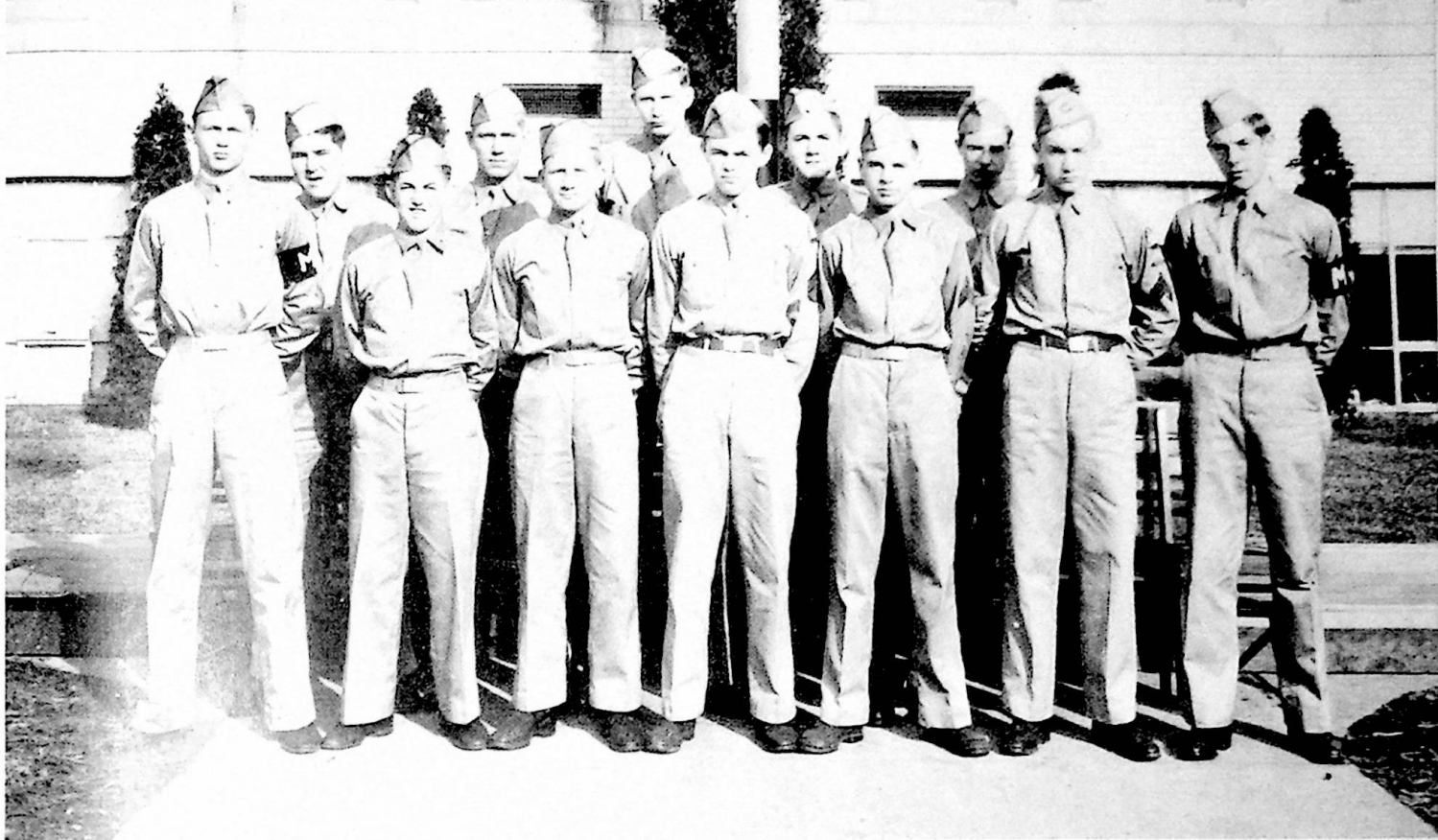
5. Howard McClure, Private

6. Harry Smith, Jr., Seaman Second Class

7. Joe Manley, Private First Class

8. Harry Voiers, Seaman Second Class





First Row Pfc. David Browning, Cpl. Robert Craft, Sgt. Bob Morgan, Flight Officer Lester Purtee, Sgt. Joyce Hahn, Sgt. Bill Cook, Pfc. Jim Darby.
Back Row. Pvt. Stanley Dutiell, Cpl. Leslie Cramer, Pfc. Junior Lewis, Cpl. Jim Saul, Pvt. Ebert Williams.
Those not pictured: Pvt. Lowell Polley, Pvt. Robert Evans, Pvt. Carl Besco, Pvt. Billy Dials, Pvt. Robert Hall, Pvt. Gene Bennett, Pvt. Otis Christian, Pvt. Donald Cregger, Pvt. Wallace Ruggles, Pvt. Charles Setters, Pvt. Donald Thieken.

CIVIL AIR PATROL

The Civil Air Patrol, a direct auxiliary unit of the United States Army Air Force, is open to boys who are Juniors or Seniors in high school. At the present time, these boys are studying the identification of aircraft, manual drill, and the Morse code. An Army plane is brought to Portsmouth one week a month for these boys' training.

There are about thirty cadets in the Wheelersburg group, Flight 2. The Senior Leader of Flight 2 is Lt. Lester Schisler; and the Commander of the Civil Air Patrol Cadets of Scioto County, which number about one hundred sixty, is Lt. Ralph Stevens.

There have been many emergencies in which these cadets have rendered their services to the Army officials. These cadets deserve much credit for devoting their time and efforts.

COMPLIMENTS

to the Class of '44

from the

Wheelersburg Baptist Church

Yes, we have it!

A TIRE VULCANIZER!

We Repair Your Tires

While You Wait!

CONKLIN AUTO SERVICE

Wheelersburg, Ohio

Phone 233-R

Mobilgas

R. R. LITTERAL

Groceries

Meats

Vegetables

Phone 980-L

We Deliver

COMPLIMENTS

of

G. M. ROSS & COMPANY

Dee Garvey

G. W. Shela

Gordon Handley

G. M. Ross

Phone 221

Portsmouth, Ohio

Greetings Class of '44

McCURDY — SCOTT

FUNERAL HOME

Phone 51-R

Ambulance Service

TEXACO

Gasoline and Oil

HENRY BUSSLER

Phone 964-X

Wheelersburg, Ohio

"Good Coffee"

Home Made Pies

Ohio Valley Restaurant

Gallia at Mill St.

Wheelersburg, Ohio

We Specialize in Home Cooking

Phone 982-R

Mrs. J. W. Hoskins, Prop.

COMPLIMENTS

of

Gilpen's

Shell Service Station

Gallia and Bloom

Sciotoville, Ohio

COMPLIMENTS

of

Ye Old Tavern

Candy Shoppe

Carl Herms, Prop.

Wheelersburg, Ohio

TRAVELIER

Sandwiches

Plate Lunches

Home Cooked

Tourist Cabins with Showers

COMPLIMENTS

of

The Automotive Supply Co.

Mobilgas

Mobiloil

Goodrich Tires

COMPLIMENTS

of

LAWSON DAIRY

Compliments of

Pitts Dairy Shoppe

Compliments

1139 Gallia St.

Next to P. H. S.

of a

FRIEND

WOLFF

Clothes for Men and Boys

Phone 1083

320 Chillicothe St.

Portsmouth, Ohio

WHEELER & SCOTT

Meats — Produce — Groceries

Phone 88

Sciotoville, Ohio

C. W. HUDSON

Compliments

Justice of the Peace

of a

Justice to All

FRIEND

G. C. WINEBRENNER

SERVICE STATION

Gallia and Harding

Sciotoville, Ohio

A. PUSATERI

WHOLESALE FRUIT

Phone 1753

1004 Chillicothe St.

Portsmouth, Ohio

RICHMAN BROTHERS

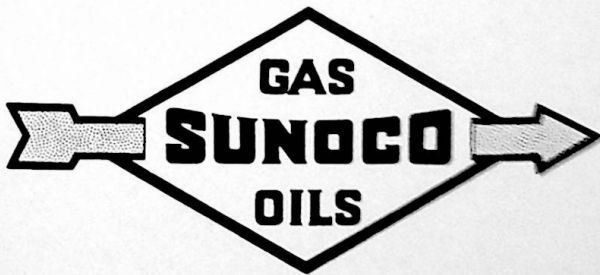
MEN'S CLOTHES

311 Chillicothe St. Portsmouth, Ohio

The Portsmouth Paint Co.

Paints Wallpaper
Glass Janitor Supplies

928 Gallia St. Portsmouth, Ohio



COMPLIMENTS

of

Wheelersburg Cut Rate Grocery

FRESH FOODS OF ALL KINDS

Phone 982-R R. S. Hoskins, Prop.

DR. JAMES KELSO

Chiropractor and Neuropath
Eye Specialist
Eyes Examined and Glasses Fitted

4002 Gallia Ave. New Boston, Ohio

Phone: Boston 2

COMPLIMENTS

of

Portsmouth Interstate Business College

Phone 2630

Portsmouth, Ohio

McGhee's Service Station

TEXACO PRODUCTS

Phone 987-X

Wheelersburg, Ohio

COMPLIMENTS

of

Johnson Bros. Grocery

Harding at Mayo

Sciotoville, Ohio

ROY ZUEFLE

Authorized Dealer for

Hamilton

Elgin

Bulova

Gruen

Watches

563 Second St.

Portsmouth, Ohio

Ed Lockner's Auto Supply

9th and Chillicothe Sts.

Distributors of AUTO PARTS

Phone 2937

Portsmouth, Ohio

CRICHTON Office Supply Company

Everything for the Office

740 Fifth St.

Portsmouth, Ohio

THE H. LEET LUMBER CO.

has served this community
since 1856

COAL - PAINT - LUMBER

Phone 98-L

Sciotoville, Ohio

HIBBITT'S HARDWARE

PAINTS and HARDWARE

315 Harding Ave.

Phone 23-X

Sciotoville, Ohio

G. H. MILLHUFF

GENERAL MERCHANDISE

Phone 15

Sciotoville, Ohio

COMPLIMENTS

to the Class of '44

Scioto County Farm Supply

Mitchell Price

G. M. Ross

COMPLIMENTS

of

CHECKER STORES INC.

Auto Supplies

Sporting Goods

Radios

Paints

824 Gallia St.

Portsmouth, Ohio

COMPLIMENTS

of

ORTHMEYER'S

BAKERY

5500 Gallia St.

Sciotoville, Ohio

HAVE YOUR

KODAK FILMS

FINISHED AT

FOWLER'S

COMPLIMENTS

of

LAUREL BISCUIT CO.

CONGRATULATIONS

from

MARGO'S

1609 Chillicothe St.

Portsmouth, Ohio

Route 52

Wheelersburg, Ohio

Ol' Home Cakes & Cookies

ALWAYS FRESH

At all independent grocers

Portsmouth Cake & Cookie Co.
1915 Grandview Ave. Phone 662
Portsmouth, Ohio

SMITH & AEH

MEATS AND GROCERIES

We Deliver

Phone 22 Wheelersburg, Ohio

MEISEL MOTOR CO.

CHRYSLER & PLYMOUTH
Wholesale and Retail Distributors

We also
Buy, Sell and Trade Used Cars
of All Makes and Models

See Us First For A Better Deal

Phone 1 234 Second St.
Portsmouth, Ohio

CONGRATULATIONS

to the

Class of '44

from

KOBACKER'S

Portsmouth, Ohio

The
REIDENBACH
Pharmacy

Prescription Druggist

Masonic Temple Wheelersburg, Ohio

Phone 51-Y

COMPLIMENTS

of

POP'S PLACE

Fill Up

with

Gas and Eats

Route 52

Phone 987-R Wheelersburg, Ohio

Coca-Cola

TRADE-MARK REG. U. S. PAT. OFF.

CONGRATULATIONS

Class of '44

from

MARTING'S

"One of Ohio's Good Stores"

Portsmouth, Ohio

HIBBITTS BROTHERS

GENERAL STORE

Phone 981-R

Wheelersburg, Ohio

DeVOSS and DONALDSON

ARCHITECTS

National Bank Bldg. Portsmouth, Ohio

McCormick's Service Station

Standard Oil Products

Phone 984-X

Route 52

Wheelersburg, Ohio

CONGRATULATIONS

Class of '44

Sport, dress, or gift occasions are more exciting when you're the center of attention.

An Atlas choice can't go wrong.

Youthful Vitality through your life!

Drink Borden's Fresh Milk every day.

BORDEN'S MODERN DAIRY

Phone 1801

237 Second St.

If it's Borden's . . . It's got to be good.

ATLAS FASHION

COMPLIMENTS

of

GLOCKNER CHEVROLET CO.

29 Years Your Chevrolet Dealer

Second and Chillicothe Sts.

THE JOYCE CO.

JEWELERS

East N & W Y. M. C. A.

COURTESY

of

WINDEL - HOWLAND

FUNERAL HOME

Al Windel

C. M. Howland

Phone 200

Ambulance Service

"Trains Run On Our Time"

HERFF-JONES COMPANY

DESIGNERS AND MANUFACTURERS OF

SCHOOL AND COLLEGE JEWELRY, GRADUATION ANNOUNCEMENTS

MEDALS, CUPS AND TROPHIES

INDIANAPOLIS, INDIANA

1411 North Capitol Avenue

JEWELERS AND STATIONERS TO WHEELERSBURG HIGH SCHOOL

REPRESENTATIVE - P. J. BURKART

