



F

H

S







EHS
Tartan 70

*presented by
the senior
class of
portsmouth
east high
school*

staff

Editor: Debrah White
Assistant Editor: Terri Kisor
Business Manager: Jennie Wickline
Typists: Linda Gampp
Kim McCann
Lisa Swick
Staff Members: Nancy Coey
Kathy Mauk
Dennis Stevens



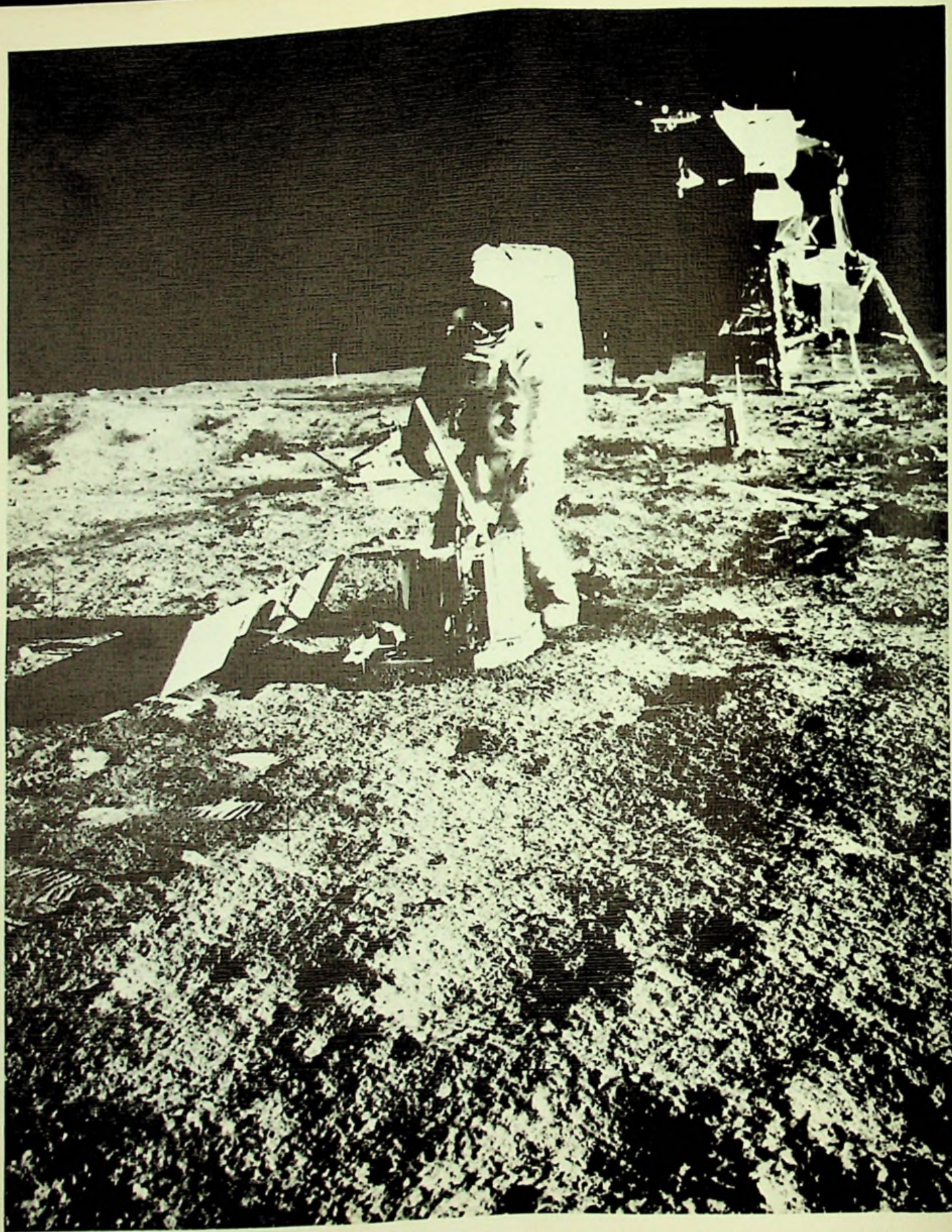
The annual staff dedicates this yearbook to the three new board of education members because their votes saved East High School in the great decision made in February of 1970.

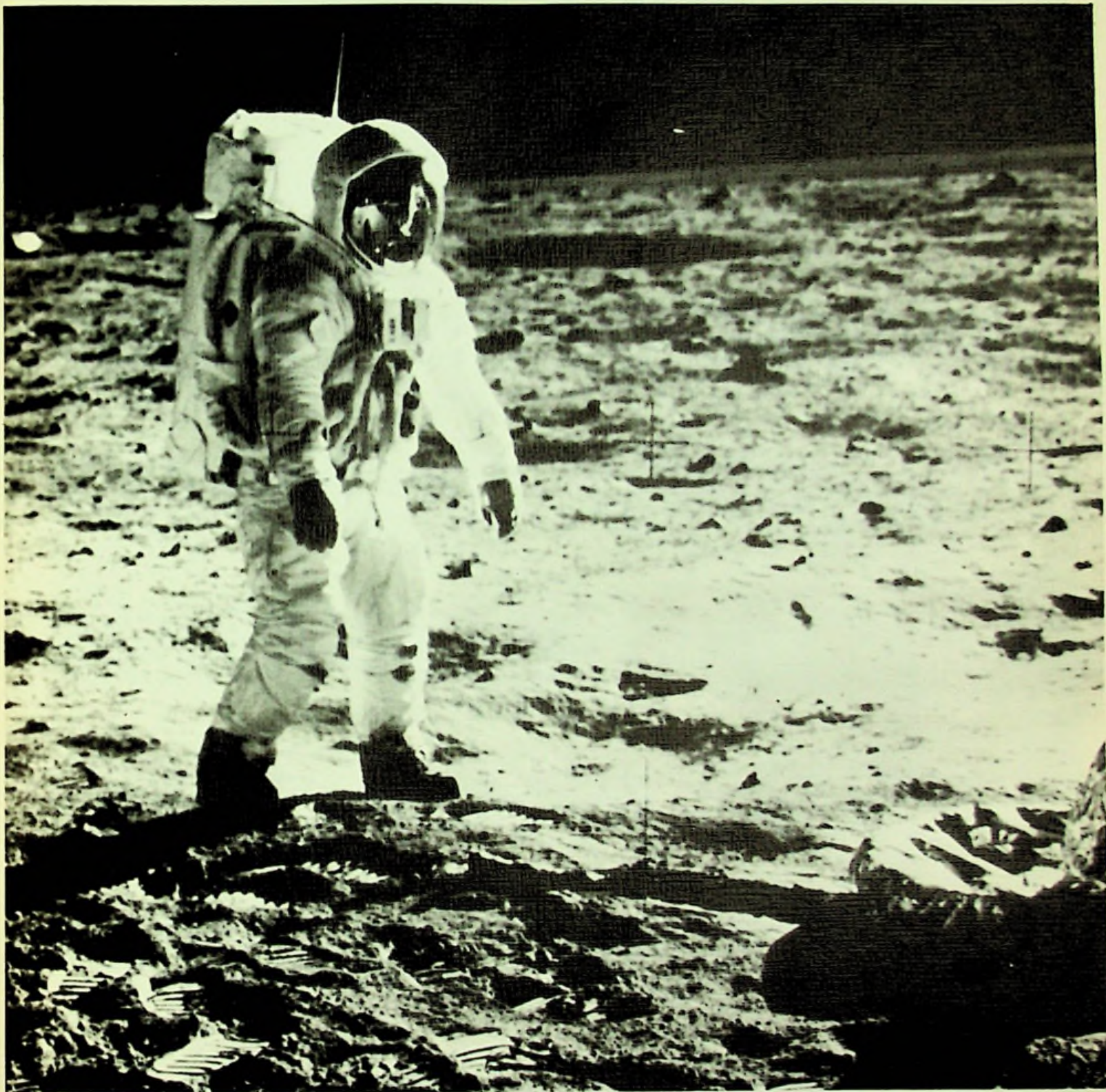
Mrs. Mildred Bussa and Mr. Robert Stevens were elected to the board in the very spirited November election. They have lived in Scioto-ville for a number of years and have children in the Scioto-ville schools. Dr. Lawrence Fried was appointed to the board in December and has lived in downtown Portsmouth the past two years.

The great French author Alphonse Daudet once wrote that language best embodies the soul of a nation. East High symbolizes the heart and individuality of Scioto-ville more than any other thing in the community, and that is why our people fought so hard to preserve this school.

All of us will be grateful for the help and understanding given by these three friends.







Three men made the trip
and two landed;
With one small step
the whole of humanity
was one.

dew



Classes

senior class history

We entered E.H.S. in the fall of 1966. We were led by president Sim Martin, vice-president Terry Shuter, secretary Dennis Stevens, and treasurer Dave Schwamburger. Our homecoming attendant was Connie Filkins, and we were represented in the Tartan King and Queen contest by Sharon Mustard and Dave Schwamburger.

Our sophomore year we elected as president, Kathy Mauk; vice-president, Betty Bussler; secretary, Susan Jordan; and treasurer, Danny Baer. The sophomore majorettes were Nancy Coey, Sue Williams, and Elaine Bussler. Selected to represent our class on the cheerleading squad were Connie Filkins, Susan Jordan, Bev Sparks, Betty Bussler, and Lynda Coburn. Our homecoming attendant was Suzanne Arrowood Jordan, and the Tartan King and Queen representatives were Susan Jordan and Mike Harrison. Prom waitresses and waiters were Linda Gampp, Sharon Mustard, Kathy Mauk, Betty Bussler, Monty Thompson, Terry Shuter, Dave Hart, and Dave Schwamburger. Kim McCann received honors for the district scholarship test. Monty Thompson and Harold Bise set school records in track.

The junior officers who helped us set our sights toward the prom were Dave Schwamburger, president; Monty Thompson, vice-president; Connie Filkins, secretary; and Terry Shuter, treasurer. We chose as our homecoming attendant Janet Carroll, and Betty Bussler and Terry Shuter were junior candidates for Tartan King and Queen. The cheering squad was led by cheerleaders Bev Sparks and Betty Bussler. The majorettes were Sue Williams and Elaine Bussler. Students who received honors in the district scholarship tests were Danny Baer, Sim Martin, Jennie Wickline, and Terri Kisor, who also received honorable mention in the state.

Junior Cup recipient was Kathy Mauk, and the National Honor Society inductees were Janet Carroll, Kathy Mauk, Debbie White, Jennie Wickline, and Dennis Stevens. Tim Williams and Sim Martin received honorable mention in S.O.C. All-Stars football. Boys who received honorable mention in S.O.C. basketball All-Stars were Dave Schwamburger and Mike Harrison. Track team record holders were Monty Thompson and Harold Bise.

Working toward the yearbook, our senior class was led by president Dave Hart, vice-president Terri Kisor, secretary Susan Jordan, and treasurer Jennie Wickline. Varsity cheerleaders were Betty Bussler and Bev Sparks, and majorettes were Elaine Bussler and Sue Williams, who was chosen as head majorette. Elected as homecoming queen was Sharon Mustard and her senior attendant was Bev Sparks. Representatives for Tartan King and Queen were Sue Williams and Dave Hart. Senior inductees into the National Honor Society were Terri Kisor, Sharon Mustard, Janet Bradley, Danny Baer, Debbie Bloomfield, Tim Williams, Terry Shuter, and Susan Jordan. Chosen as Outstanding Teenagers of America were Terri Kisor, Jennie Wickline, and Dave Hart. The recipients of State Board Certificates were Sharon Mustard, Terri Kisor, Neil Gilliland, Dave Hart, Susan Jordan, Debbie White, and Pam Payton. Debbie White received the Betty Crocker Award and Kathy Moore was presented with the Sterling Silver Award. Terri Kisor won the D.A.R. Award and was the only senior to receive awards in the district scholarship tests. Tim Donley, Danny Baer, Dave Hart, and Randy Jones received Honorable Mention in S.O.C. football. The valedictorian was Jennie Wickline and Terri Kisor was salutatorian.



The senior class officers are (left to right): Susan Jordan, secretary; Dave Hart, president; Terri Kisor, vice president; and Jennie Wickline, treasurer.

seniors



GAIL DENISE ADAMS



MICHAEL JAMES ARTHUR



DANIEL NELSON BAER



DEBRA JEANNE BENTLEY



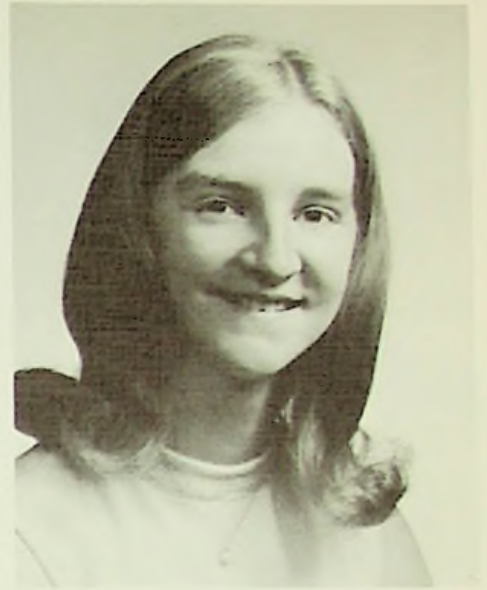
HAROLD LLOYD BISE



MARY LOUISE
BLANKENBECKLEY



DEBORAH ELAINE
BLOOMFIELD



JANET FAYE BRADLEY



GLORIA JEAN BURGESS



BRENDA JOY BURNS



BETTY ANN BUSSLER



BETH ELAINE BUSSLER



KENNY RAY CARTER



DEBBIE LYNN CHAMBERLIN



PATRICIA ANN CHAMBERLIN



ROBERT FORREST CLAUSING



LYNDA LOUISE COBURN



NANCY ANNE COEY



LINDA ELAINE COLE



PATRICIA ANN COLE



ROSEMARY CONLEY



JUDI A. CONN



CHERYL MARIE CORRIN



ERVIN STANLEY CRAFT JR.



JAMES RICHARD CROPPER



JOHN KEITH CURTISS



ROBERT STEVEN DANIELS



TIMOTHY DAVID DONLEY



STEVE PATRICK FARMER



THOMAS KEVIN FELTS



CONNIE SUE FILKINS



LINDA LOU GAMPP



NEIL RICHARD GILLILAND



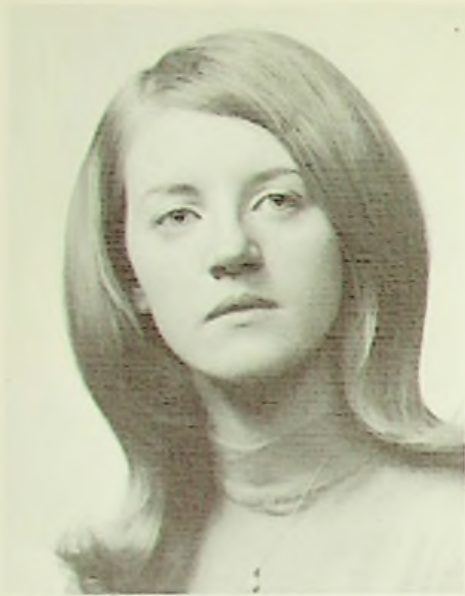
ROSANNA GOUNDRY



JERRY ORIVELLE GREEN



KEN WOOD HALL



MARY ELLEN HALL



JOHN WILLIAM HAMMOND



MICHAEL STANLEY HARRISON



WILLIAM DAVID HART



JAMES HENDERSON



DEBORAH JOAN HICKS



DEBORAH LOU JOHNSON



RANDY KEITH JONES



SUSAN FAY JORDAN



SUZANNE ARROWOOD JORDAN



MARY TERESA KISOR



BEVERLY DIANNE LEESBURG



KIMBERLY KAY McCANN



SIMEON LEROY MARTIN



KATHY LEE MAUK



KATHERINE MARY MOORE



KATHY EILEEN MORGAN



SHARON FAYE MUSTARD



JANE ELLEN NEWLAN



BRENDA KAYE NICKELLS



ELSIE KAREN PATZ



PAMELA SUE PAYTON



DONALD EUGENE RAYNARD



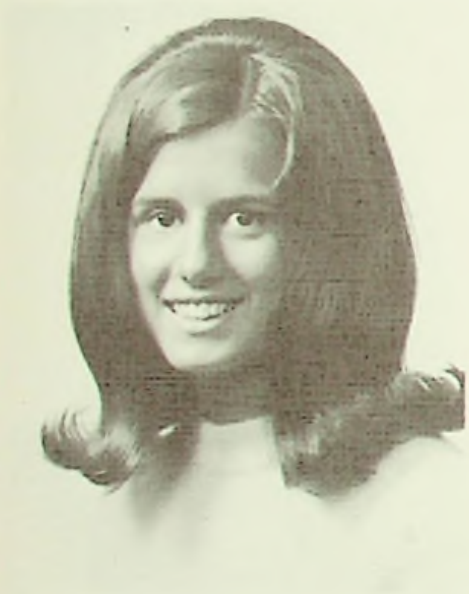
WILLIAM DAVID
SCHWAMBURGER



TERRY LEE SHUTER



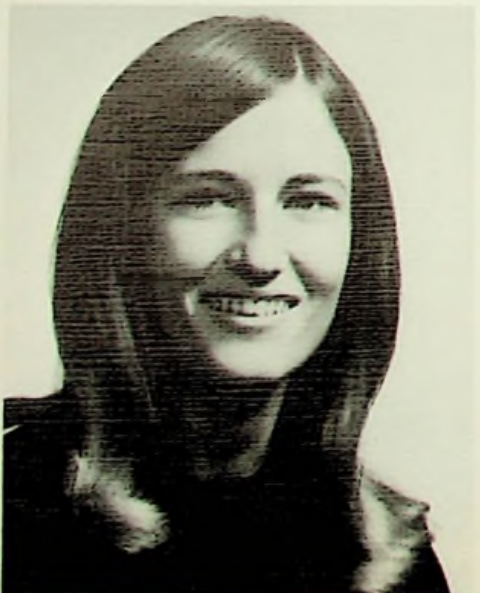
SHARON ELAINE SNYDER



BEVERLY ANN SPARKS



DENNIS GENE STEVENS



LISA ELAINE SWICK



MARSHA CONLEY THOMPSON



MONTY RAY THOMPSON



KATHY LYNN TURNER



JAMES ARNOLD WALBURN



BELINDA RAE WELCH



DEBRAH ELAINE WHITE



JENNIE LEA WICKLINE

senior directory

GAIL DENISE ADAMS

Latin Club 1,2; Spanish Club 3,4; Pep Club 1,2,3,4; Nature Club 3,4; Tri-Hi-Y 3,4; Scholarship Team 2; Newspaper Staff 4; Annual Staff 4; Prom Decorating Committee 3; Girls' League 1,2,3,4; Teacher's Aide 4.

MICHAEL JAMES ARTHUR

Basketball Team 1.

DANIEL NELSON BAER

Science Club 1,2; Latin Club 1,2; Spanish Club 3; Honor Roll 3; Scholarship 1,2,3,4; District Scholarship Honors 3; Track Team 1,2,3,4; Basketball Team 4; Football Team 4; Class Treasurer 2; Hi-Y 4-Treasurer 4; National Honor Society 4.

HAROLD LLOYD BISE

Football 2,3,4; Track Team 1,2,3.

MARY LOU BLANKENBECKLEY

Glee Club 1,2,3,4; F.H.A. 4; Girls' League 1,2,3,4.

DEBBIE ELAINE BLOOMFIELD

Latin Club 1; Pep Club 1,2; Glee Club 1,2,3,4; Girls' League 1,2,3,4; Teacher's Aide 4; National Honor Society 4.

JANET FAYE BRADLEY

Girls' League 1,2,3,4; Office Assistant 4; Scholarship Team 3; Teacher's Aide 4; National Honor Society 4.

GLORIA JEAN BURGESS

Girls' League 1,2,3,4; Scholarship Team 3; Perfect Attendance 1,2,3,4.

BRENDA JOY BURNS

Girls' League 1,2,3,4; Glee Club 2,3; F.H.A. 1,2.

BETH ELAINE BUSSLER

Band 1,2,3,4; Majorette 2,3,4; Nature Club 3,4; Tri-Hi-Y 4; Pep Club 1,2,3; Science Club 4; Girls' League 1,2,3,4; Band Council 2,4; F.H.A. 4; Spanish Club 3,4.

BETTY ANN BUSSLER

Pep Club 1,2,3,4; Cheerleader 2,3,4; Nature Club 2,3,4; Student Council 4; Tri-Hi-Y 4; Glee Club 2,3; Science Club 3; Scholarship Team 3; Girls' League 1,2,3,4; Spanish Club 3,4; Art Club 1; Tartan King and Queen 3.

KENNY RAY CARTER

Band 1,2,3,4; Football 1; Hi-Y 3; Student Government Delegate.

DEBORAH LYNN CHAMBERLIN

Tri-Hi-Y 3,4; Pep Club 4; F.H.A. 4; Glee Club 1,2,3,4; Nature Club 4; Girls' League 1,2,3,4.

PATRICIA ANN CHAMBERLIN

Tri-Hi-Y 3,4; Pep Club 2,3; F.H.A. 4; Glee Club 1,2,3,4; Girls' League 1,2,3,4.

SHARON WOLFE CLARE

Tri-Hi-Y 3,4-Officer 4; Glee Club 1,2,3,4; Girls' League 1,2,3,4; Latin Club 1; Pep Club 1,2.

FORREST ROBERT CLAUSING

Football 1,3,4.

LYNDA LOUISE COBURN

Tri-Hi-Y 3,4; Girls' League 1,2,3,4; Scholarship Team 2; Glee Club 1,2; Pep Club 1,2,3; Cheerleader 2; Latin Club 1; Art Club 4.

NANCY ANNE COEY

Band 1,2; Majorette 2; Pep Club 1,2,4; Tri-Hi-Y 4; Annual Staff 4; Spanish Club 3,4; F.H.A. 4; Girls' League 1,2,3,4; Teacher's Aide 4; Perfect Attendance 4.

LINDA ELAINE COLE

Girls' League 1,2,3,4; Library Staff 4.

PATTI ANN COLE

Girls' League 1,2,3,4; Library Staff 4.

TERRY CURTIS CONLEY

Band 1,2,3.

JUDY A. CONN

Glee Club 1,2,3,4; Girls' League 1,2,3,4; Library Staff 2; Teacher's Aide 4; Pep Club 2.

CHERYL MARIE CORRIN

Latin Club 1; Art Club 1,3; Newspaper Staff 3; Nature Club 4; Pep Club 4; Girls' League 1,2,3,4; Tri-Hi-Y 3,4.

JAMES RICHARD CROPPER

Glee Club 3,4.

JOHN KEITH CURTISS

Basketball Team 1,2,3; Football Team 1; Track Team 2; Hi-Y 3,4.

ROBERT STEVEN DANIELS

Trade and Industry 3,4.

ROSANNA GOUNDRY

TIMOTHY DAVID DONLEY

Baseball Team 1,2,3,4; Football Team 1,3,4-Honorable Mention 4; Basketball Team 2; Hi-Y 3,4; Nature Club 2,3,4; Glee Club 1,2,3,4; Football Manager 2; Spanish Club 3,4; Science Club 2; Perfect Attendance 3,4.

Library Staff 4; Girls' League 4; F.H.A. 1,2; Mixed Chorus 1,2,3; Bergen, New York 1,2,3.

THOMAS KEVIN FELTS

Hi-Y 3,4; Basketball Team 1,2,3,4; Nature Club 2,3,4; Pep Club 3,4; Glee Club 1,2,3; Science Club.

Football 1,4.

JERRY ORIVELLE GREEN

KEN WOOD HALL

Glee Club 1,2,3,4; Library Staff 3,4; Football Team 1,2,3; Baseball Team 2,3.

CONNIE SUE FILKINS

Pep Club 1,2,3,4; Cheerleader 2; Tri-Hi-Y 3,4-Officer 4; Glee Club 1,3,4; Nature Club 3,4; Homecoming Attendant 1; Girls' League 1,2,3,4; Class Officer 3; Latin Club 1,2.

MARY ELLEN HALL

Glee Club 1,2; Co-Op 4.

LINDA LOU GAMPP

Glee Club 1,2,3; Latin Club 1,2; Office Assistant 4; Newspaper Staff 4; Annual Staff 4; Girls' League 1,2,3,4; Prom Waitress 2; Perfect Attendance 2,3,4.

JOHN WILLIAM HAMMOND

Football Team 1,2,3; Baseball Team 1,2,3; Basketball Team 1,2; Nature Club 2,3,4; Latin Club 1; Spanish Club 3,4; Glee Club 1,2,3,4; Hi-Y 3,4.

NEIL RICHARD GILLILAND

Latin Club 1,2; Spanish Club 3,4; Hi-Y 4; State Board Certificate 4; Scholarship Team 3,4; Track Team 3,4; Football Manager 4; Perfect Attendance 1,2,4.

MICHAEL STANLEY HARRISON

Hi-Y 3,4; Basketball Team 1,2,3,4; Baseball Team 1,2,3; Latin Club 1; Tartan-King-and-Queen Candidate 2; Science Club 1,2,3; Football Team 1,4-Honorable Mention 4; Nature Club 4; Basketball S.O.C.-Honorable Mention 3; All-Star 4.

WILLIAM DAVID HART

Track Team 1,2,3,4; Hi-Y 3,4; Football Team 3,4-S.O.C. Honorable Mention 4; Nature Club 1,2,3,4; Class Officer 4; Basketball 1,2; Latin Club 1,2; Spanish Club 3,4; Pep Club 3; Science Club 1,2; Glee Club 1,2,3; Tartan-King-and-Queen Candidate 4; Scholarship Team 1,2; Outstanding Teen-Ager of American 4; State Board Certificate 4.

JAMES HENDERSON

Basketball Team 1; Baseball Team 3; Lewis County High School 1,2,3.

DEBORAH JOAN HICKS

Glee Club 4; Girls' League 4; F.H.A. 1,2; Mixed Chorus 1; Minford High School 1,2.

DEBORAH LOU JOHNSON

Latin Club 1; Spanish Club 2; Girls' League 1,2,3,4; Glee Club 1,2,4; Pep Club 1,2.

RANDY KEITH JONES

Hi-Y 3,4; Basketball Team 1; Football 1,2,3,4-Honorable Mention 4; Track Team 1,2,3,4; Latin Club 1; Spanish Club 1; Student Council 3,4; Science Club 1.

SUSAN FAYE JORDAN

Tri-Hi-Y 3,4-Officer 4; Pep Club 1,2,3,4-Officer 4; Nature Club 2,3,4; Science Club 2,3,4-Officer 3; Annual Staff 4; Glee Club 1,2,3,4; Latin Club 1,2; Spanish Club 3,4; Cheerleader 2; Tartan-King-and-Queen Candidate 2; Class Officer 2,4; Scholarship Team 2,3; Cashier 4; National Honor Society 4; State Board Certificate 4.

SUZANNE ARROWOOD JORDAN

Spanish Club 3; Pep Club 1,2; Tri-Hi-Y 3,4; Latin Club 1; Homecoming Attendant 2; Glee Club 1,2,3,4; Prom Committee 3.

MARY TERESA KISOR

Tri-Hi-Y 4; Pep Club 1,2,3,4; Nature Club 3,4; Science Club 4-Officer 4; Annual Staff 4-Assistant Editor 4; Band 1,2,3,4; Glee Club 4; Latin Club 1,2; Spanish Club 3,4; Girls' League 1,2,3,4; Newspaper Staff 3; Class Officer 4; Outstanding Teen-Ager of America 4; Cashier 4; National Honor Society 4; Scholarship Team 1,2,3,4-District Honors 3,4-State Honors 3; Ad Salesman 4; D.A.R. 4; American Legion Test-County Girls' Winner 4; State Board Certificate 4; Salutatorian 4.

BEVERLY DIANNE LEESBURG

Tri-Hi-Y 3,4; Latin Club 1; Glee Club 2,3,4; Girls' League 1,4.

KIMBERLY KAY McCANN

Latin Club 1,2; Glee Club 1,2; Tri-Hi-Y 3,4; Newspaper Staff 3,4; Pep Club 1,2,3,4; Annual Staff 4; Nature Club 3,4; Girls' League 1,4; Scholarship Team 2,4-District Honors 4.

SIMEON LeROY MARTIN

Football Team 1,2,3,4 - Captain 4 - S.O.C. Honorable Mention 3-S.O.C. All-Star 4 - Most Valuable Player 4; Basketball Team 1-Manager 2; Statistician 3; Baseball Team 1,2,3,4; Golf Team 2,3,4; Latin Club 1,2; Spanish Club 3; Hi-Y 3,4; Nature Club 1,2,3,4; Science Club 3; Glee Club 4; Scholarship Team 1,2,3,4-Honors 3; Class Officer 1,3.

KATHY LEE MAUK

Nature Club 2,3,4-Officer 3; Pep Club 1,2,3,4-Officer 3; National Honor Society 3,4; Annual Staff 4; Science Club 3; Latin Club 1,2; Girls' League 1,2,3,4; Tri-Hi-Y 3,4-Officer 4; Glee Club 1,2,3,4; Prom Committee; Junior Cup.

KATHERINE MARY MOORE

Girls' League 1,2,3,4; Newspaper Staff 3; Spanish Club 4; Glee Club 1,2,3,4; F.H.A. 4-Officer 4; Nature Club 3; Library Staff 4; Sterling Silver Award 4.

KATHY EILEEN MORGAN

Girls' League 1,2,3,4; Band 1,2,3,4; Spanish Club 3.

SHARON FAYE MUSTARD

Girls' League 1,2,3,4-Officer 4; Glee Club 1,2; Tartan-King-and-Queen Candidate Pep Club 2,3,4-Officer 2,3,4; Tri-Hi-Y 3,4-Officer 4; Latin Club 1,2; Spanish Club 3,4; Student Council 3,4-Officer 3,4; Homecoming Queen 4; Prom Waitress 2; Prom Committee 3; Office Assistant 3,4; Sandy Pence Award 4; National Honor Society 4; State Board Certificate.

JANE ELLEN NEWLAN

Glee Club 4; Sam Houston High School 1,2,3.

BRENDA KAYE NICKELLS

Girls' League 1,2,3,4; Glee Club 1,2,3,4; Tri-Hi-H 3,4.

ELSIE KAREN PATZ

Girls' League 3,4; Latin Club 1,2; Scholarship Team 2; Band 1,2,3,4; Tri-Hi-Y 4; Nature Club 4; Pep Club 1,2,4; Office Assistant 4; Portsmouth High School 3.

PAMELA SUE PAYTON

Girls' League 1,2,3,4-Officer 4; Nature Club 2,3,4-Officer 4; Pep Club 1,2,3,4; Latin Club 1,2; Spanish Club 3,4; Scholarship Team 3,4; Annual Staff 4; Newspaper Staff 4; Tri-Hi-Y 4; Prom Committee 3; Teacher's Aide 4; State Board Certificate 4.

DONALD EUGENE RAYNARD

Glee Club 1,2,4.

ROGER DALE ROBBINS

Art Club 1; Basketball Team 2; Honor Roll; Trade and Industry 3,4.

WILLIAM DAVID SCHWAMBURGER

Latin Club 1, Spanish Club 3,4; Hi-Y 3,4; Nature Club 2,3,4; Glee Club 1,2; Basketball Team 1,2,3,4; Baseball Team 2,3; Golf Team 2,3,4; Class Officer 1,3; Science Club 2,3; Football Team 1; Prom Waiter 2; Tartan-King-and-Queen Candidate 1.

TERRY LEE SHUTER

Spanish Club 3,4; Latin Club 1; Hi-Y 3,4-Officer 4; Nature Club 2,3,4; Glee Club 1; Golf Team 2,3,4; Class Officer 1,3; Boys' State Representative 3; Science Club 2,3,4; Newspaper Staff 3; Prom Waiter 2; Tartan-King-and-Queen Candidate 3; Scholarship Team 1,2,3; State Board Certificate 4; Basketball Manager 2,3; National Honor Society 4; Honor Roll 4.

SHARON ELAINE SNYDER

Girls' League 1,2,3,4; Band 1,2,3,4; F.H.A. 3,4-Officer 4; Tri-Hi-Y 3,4; Scholarship Team 3.

BEVERLY ANN SPARKS

Girls' League 1,2,3,4; Pep Club 1,2,3,4; Cheerleader 2,3,4; Latin Club 1; Spanish Club 4; Glee Club 1,2,3,4; Perfect Attendance 1,2; Homecoming Attendant 4; Tri-Hi-Y 4; Nature Club 2,3,4-Officer 3; Science Club 3; Portsmouth Science Fair 3; Ohio University Science Fair 3; Annual Staff 4; Ad Salesman 4; Prom Committee 3.

DENNIS GENE STEVENS

Latin Club 1,2; Spanish Club 3,4; Glee Club 1,2,3,4; Hi-Y 3,4; National Honor Society 3,4; Perfect Attendance 1,2; Football Team 1; Basketball Team 1,2,3,4; Scholarship Team 1,2,3,4; Class Officer 1; Newspaper Staff 3; Annual Staff 4; Ad Salesman 4.

LISA ELAINE SWICK

Girls' League 1,2,3,4; Glee Club 1,2,3,4; Pep Club 1,2,3,4-Officer 3; Nature Club 1,4; Tri-Hi-Y 3,4; Annual Staff 4; Prom Committee 3.

MARSHA CONLEY THOMPSON

Girls' League 1,2,3,4; Band 1; Glee Club 1,2,3; Tri-Hi-Y 3,4; Pep Club 1,2.

MONTY RAY THOMPSON

Latin Club 1,2; Spanish Club 3,4; Science Club 1,2,3; Nature Club 2,3,4; Class Officer 3; Hi-Y 3,4; Football Team 1,2,3,4; Basketball Team 1,2; Track 1,2,3,4; Prom Waiter 2; Newspaper Staff 3.

KATHY LYNN TURNER

Girls' League 1,2,3,4; Pep Club 1,2; Nature Club 1,2; Glee Club 1; Office Assistant 4.

JAMES ARNOLD WALBURN

Spanish Club 3; Baseball Team 2; Nature Club 2,3,4; Prom Committee 3; Hi-Y 4; Track Team 3.

BELINDA RAE WELCH

Girls' League 1,2,3,4; Glee Club 1,2,3,4; Pep Club 1,2,3,4-Officer 3,4; Tri-Hi-Y 3,4; Nature Club 4; Latin Club 1; Spanish Club 2.

DEBRAH ELAINE WHITE

Girls' League 1,2,3,4; Science Club 1,2,4; Pep Club 1,2,3,4; Tri-Hi-Y 3,4-Officer 4; Art Club 1,2; Latin Club 1,2; Spanish Club 3,4; Glee Club 1,2,3,4; Nature Club 3,4-Officer 4; National Honor Society 3,4; Yearbook Editor 4; Newspaper Staff 2,3-Editor 3; State Board Certificate 4; Perfect Attendance 1,2,3,4; Betty Crocker Award 4; Scholarship Team 2,3.

JENNIE LEA WICKLINE

Girls' League 1,2,3,4; Glee Club 1,2,3,4; Pep Club 1,2; Tri-Hi-Y 3,4; Annual Staff 4-Business Manager 4; Ad Salesman 4; Latin Club 1,2; Spanish Club 3,4; National Honor Society 3,4; Outstanding Teen-ager of America 4; Prom Committee 3; Scholarship Team 1,2,3,4-District Honors 3; Class Officer 4; Teacher's Aide 3,4; Valedictorian 4; Honor Roll 4.

SUE ELAINE WILLIAMS

Girls' League 1,2,3,4-Officer 4; Band 1,2,3,4; Majorette 2,3,4-Head Majorette 4; Nature Club 2,3,4; Pep Club 1,2,3,4-Officer 4; Spanish Club 3; F.H.A. 4-Officer 4; Perfect Attendance 3; Tartan-King-and-Queen Candidate 4; Prom Committee 3; Band Council 3,4.

TIMOTHY C. WILLIAMS

Hi-Y 3,4-Officer 4; Latin Club 1; Spanish Club 2,3; Scholarship Team 1; Newspaper Staff 2,3; Football Team 1,2,3,4-S.O.C. Honorable Mention 3,4-Third-Year Varsity Award; Basketball Manager 1; National Honor Society 4; Lab Assistant 4.

JANE ANN WINKLER

Girls' League 1,2,3,4; Glee Club 1,2.







*1970
graduation*



The junior class officers were (first row) Vicki Swick-president and Ty Marsh-vice president with (second row) Sherry Flinders-treasurer and Shannon Thompson-secretary.

juniors

Becky Adams
 Mark Allard
 Velda Anderson
 Betsy Arn



Steve Bailey
 Debbie Barr
 Dave Basham
 Rick Bateman



Steve Benner
 Suzann Bonzo
 Jenetta Breech
 Eric Brown



Patti Burriss
 Cheryl Burns
 Bill Carter
 Tom Castle



Denny Chamberlin
 Jerry Coburn
 Rita Cook
 Donna Cooper



Mike Dalton
 Darlene Daugherty
 J. R. Douglas
 Marcella Elliot



Mark Elliot
 Bill Etterling
 Kathiann Evans
 Rhonda Fankell



Gemma Fields
 Debbie Fisher
 Sherry Flinders
 Patti Green



Dave Hamilton
 Dave Harrison
 Joyce Hilliard
 Pauline Holland

Kathy Hollingsworth
 Steve Hutchinson
 Robin Jenkins
 Nancy Jordan



Patsy Jordan
 Jim Kennedy
 Tim Liles
 Dave Luster



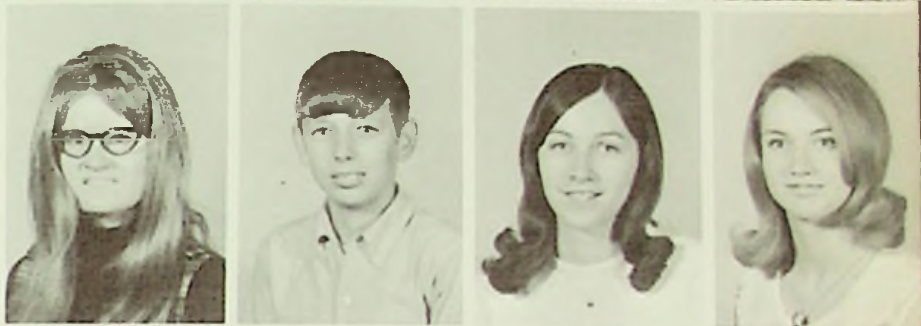
Alice Lykins
 Bob Marsh
 Elaine Lyon
 Ty Marsh



Doug Martin
 Mike Martin
 Pam Martin
 Gary Mayhew



Margie Maynard
 Jim McClintic
 Carolyn McGraw
 Connie McGraw



Jennie Milliron
 Butch Mills
 Betty Montavon
 Greg Morton



Joyce Musser
 Diann Noble
 Martha Noel
 Debbie Ogg



Jerry Ogg
 Ron Peecher
 Connie Phillips
 Randy Pierce



B. Jo Pogue
 Mark Ramey
 Karen Richey
 Sharon Richey



John Rollins
Betty Scaggs
Brenda Skaggs
Marvin Selby



Tony Selbee
Tom Sherman
John Smith
Mike Sowards



Rod Sturgill
Tom Swavel
Vicki Swick
Shannon Thompson

Bonnie Turner
Chris Watts
Jamie Welch
Cliff White



Steve Williams
Stewart Williams
Terry Williams





Connie Buchannan-Secretary, Jami Spriggs-Treasurer, Jeff Hood-President, Penny Jordan- Vice President

sophomores - class of '72



Paul Allard
John Allen
Beverly Altman
Al Armbrister



Rita Bear
Lois Bailey
Mary Bayerl
Patty Blaine



Ellis Bowling
Susan Bowling
Terry Brumfield
Gay Bryan

Connie Buchanan
Leita Bussey
Clarence Cantrell
Rod Chamberlin



James Clark
Ron Cole
Anita Collins
Cheryl Cook



Darrell Davis
Jay Davis
Tom Donley
Patty Elliot



Teresa Evans
 Mike Gire
 Bennie Hall
 Sherrie Hamm



Mitch Hammond
 Anna Harrison
 Bill Henderson
 Pam Hensley



Linda Holbrook
 Paula Holland
 Walter Holland
 Donna Hollingsworth



Jeff Hood
 Bob Horton
 Debbie Horton
 Carole Howard



Randy Howell
 Jeff Hughes
 Angie Johnson
 Debbie Johnson



Penny Jordan
 Barb King
 Benny King
 Debbie King



Keith King
Debbie Kinker
Roger Kratzenberg
Steve Kratzenberg



Curt Larsen
Susie Lowe
Glen Marsh
Jeff Mauk



Debbie Maynard
Bob McCann
Dennis McMullen
Kevin Mershon

Donna Miller
Mitch Millhuff
Gary Morris
Danny Mullens



Mike Neal
Leslie Newlan
Gene Noel
Danny Porter



Judy Raynard
Pam Rhodes
Patty Riggs
Cheryl Robbins



Jim Roney
Wayne Rooney
Chuck Rose
Randy Ross



Connie Russell
Nancy Sapp
Janie Sergent
Cindy Secest



Denny Sexton
Garold Simpson
Kay Slack
Mike Slack



Susie Sneddon
Jamie Spriggs
Susie Spriggs
Brenda Stanley



Darrell Stapleton
Andy Sturgeon
Mike Taulbee
Vicki Tipton



John Turner
Joe Van Dyke
Jeff Walburn
Curt Watts



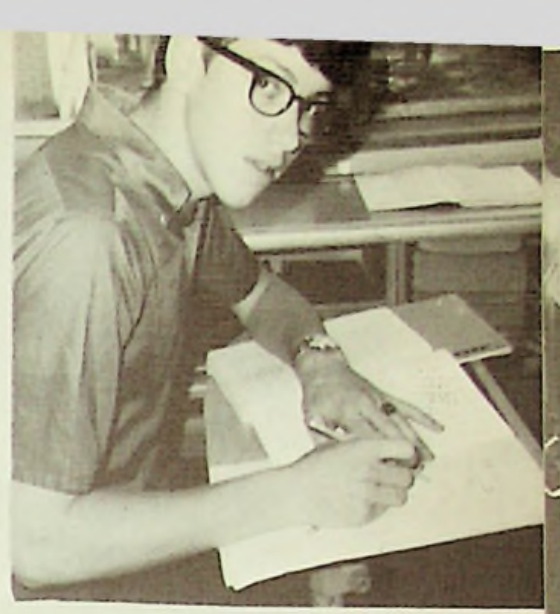
Dennis Weaver
Lowell Welch
Mary White
Regina White



Larry Whitt
Connie Williams
Vickie Williams
Barb Wilson



Doretha Wilson
Steve Wineka
Jim Winkler





Marlena Adkins - Treasurer, Patty Bayrl - Vice President, Jeff Gerard - President, Kathy Adams - Secretary

freshman - class of '73

Kathy Adams
 Marlana Adkins
 Dwayne Ashley
 Mark Bailey



Carl Bartley
 Mary Berry
 Victor Branda
 Dave Brumfield



Roberta Bryan
 Carl Burriss
 John Bush
 Sue Bussler



Bob Carter
 Bob Castle
 Dale Chamberlin
 Donna Chamberlin



Mike Clausing
 Connie Clithero
 Rita Coffee
 Mary Cole



Sandy Cook
 Patty Cooper
 Dave Crisp
 John Cummings



Gary Daniels
 Connie DeLotell
 David Elrod
 Denise Etterling



Ray Fankell
 Rick Fankell
 Lola Fetty
 Bill Fisher



Jeff Frazier
 Ruth Frazier
 Bob Ferguson
 David Gardner

Sandy Garrett
 Jeff Gerard
 Bruce Giles
 Rick Hamilton



Tammy Henry
 Sharon Hock
 Nancy Holland
 Ruth Holland



Bruce Horton
 Brenda Jarvis
 Tim Jennings
 Mara Johnson



Steve Johnson
 Terry Johnson
 Sharon Jones
 John Jordan



Pam Keller
 Brenda Kilgore
 Donna King
 Camellia Kingery



Joe Kisor
 Kenny Kuhner
 Debbie Leesburg
 Pam Martin



Mike Mahone
 Randy Marshall
 Clyde McClintic
 Joe McClurg



Kathy McClurg
 Robert McGraw
 Sheala McKee
 Cecilia Mohr



Jane Montavon
 Anita Moore
 Keith Morgan
 Dianna Morton



Mary Musser
Mike Musser
Christopher Nicolaysen
Cathy Peecher



Randy Perry
Roger Perry
Randy Pierce
Barb Price



Don Price
Joe Schouster
Darlene Semones
Kenny Skaggs

Jerald Slack
Beverly Slark
Betty Smith
Bill Smith



Bruce Smith
Louvena Smith
Oscar Smith
Vicki Smith



Joy Stevens
Peggy Stiltner
Barbara Stout
Steve Sturgill



NOT PICTURED

JUNIORS

Clarence Cantrell
Steve Cantrell
Marilyn Cooley
Doug Hale
Ken Jones
Paul McClurg
Mike Phillips
Charles Schouster
Joan Schouster
Dale Stanley
Linda Whitt
Steve Williams

SOPHOMORES

Kevin Christopher

FRESHMEN

Patty Bayerl
Carol Hammond
Grover McGuire
Bev Monroe
Sherman Monroe
Mike Payton
Sue Phillips



Greg Thompson
Karen Tipton
Bill Truit
Jeff Urban



Debbie Wamsley
Teresa Warden
Gary Warnock
Carol Watts
Jeff Welch



Rodney Wilder
Shirley Williams
Rusty Wolfe
Mary Yerardi
Sam Yerardi

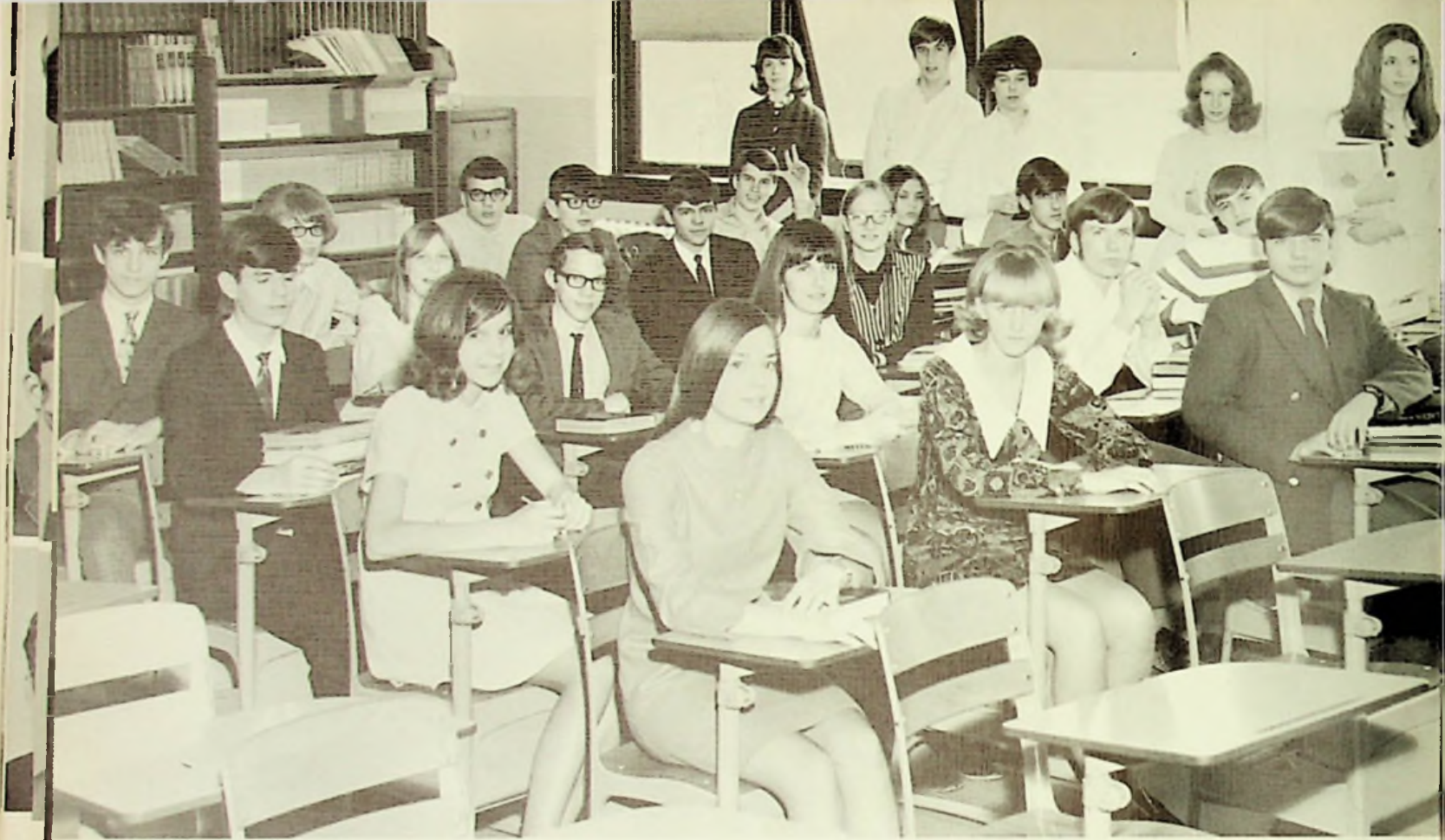








Organizations

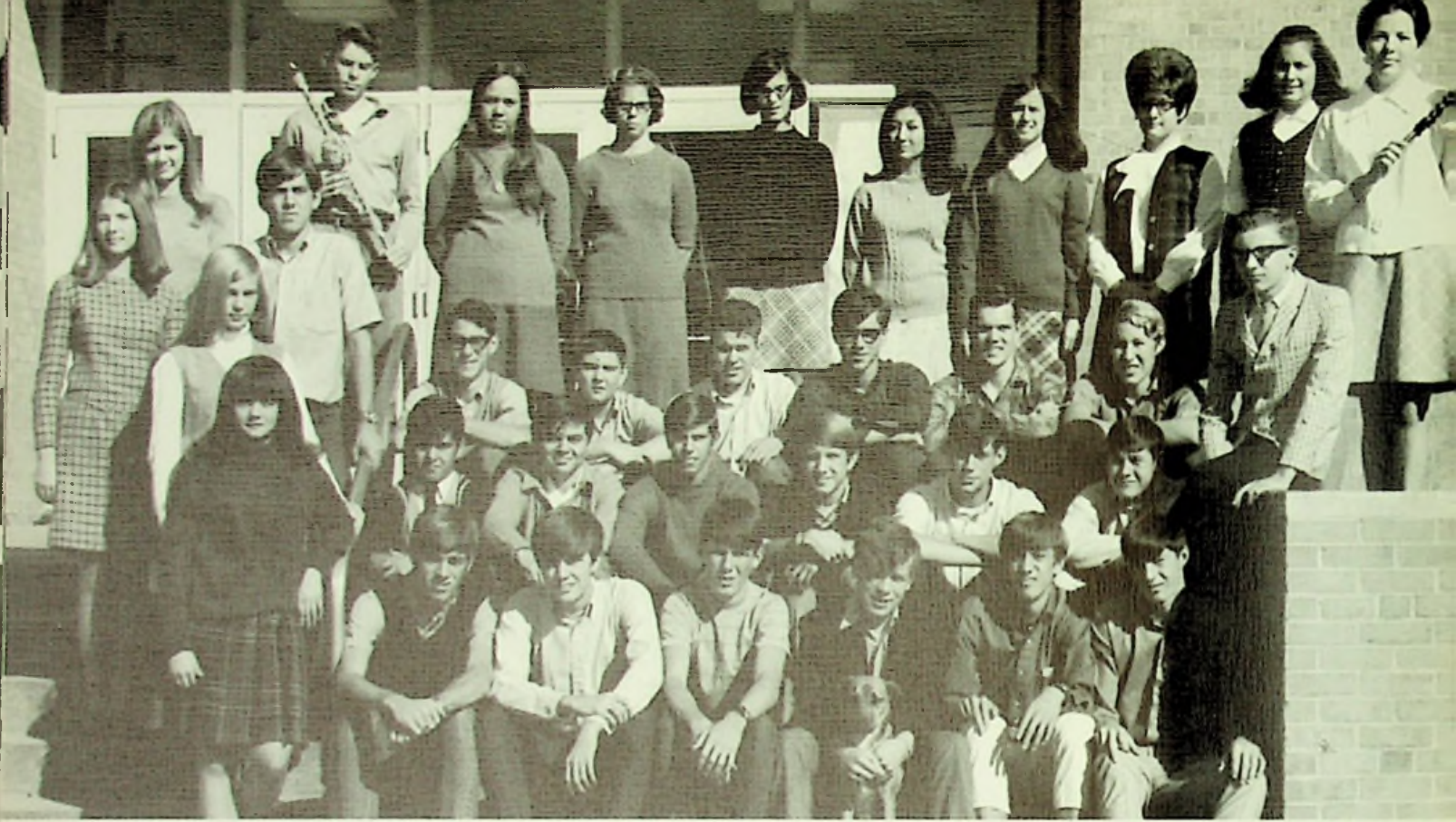


The Latin I students in November were part of the one-hundred group who made the annual theater trip to Cincinnati. These are greenhorn Romans. Row 1: Kathy Peecher, Jane Montavon, Sam Yerardi, Bruce Horton. Row 2: Patti Bayerl, Tammy Henry, Keith Morgan, Karen Tipton, Joy Stevens. Row 3: Tim Jennings, John Jordan, Camillia Kingery, Jeff Gerard, Bob Castle, Ray Fankell. Row 4: Dave Gardner, Rick Hamilton, Barb Price, Joe Kisor. Standing: Sherrie Hock, Suzie Bussler, Cecilia Mohr, Mike Clausing, Kathy Adams. The arm belongs to Connie Clithero.

latin I



latin II



The students of Spanish I spent the year learning the basic structures of the language, and they exchanged letters with two high schools in Orizaba, Mexico. These "gringos" are, Row one: Susan Sneddon, J.R. Douglas, Tom Sherman, Jeff Walburn, Steve Kratzenburg, Wayne Rooney, Jim Roney. Row two: Vicki Tipton, Kevin Mershon, Benny King, Chuck Rose, Ty Marsh, Jerry Ogg, Rod Chamberlin, Carl Bartley. Row three: Debbie Johnson, Steve Bailey, Jeff Mauk, Mitch Hammond, Denny Chamberlin, Doug Martin, Bill Etterling, Rick Bateman. Row four: Barbara King, Mike Gyor, Alice Lykins, Suzann Bonzo, Karen Richey, Pauline Holland, Bev Sparks, Sherry Hamm, Doretha Wilson, Kathy Moore.

spanish I



spanish II



This year's Spanish II read "El Gaucho Smith", wrote a journal, visited the Cincinnati Museum of Art, and individually read a book written in Spanish. The East High Spaniards are Bull-Dave Hart, Picadors-Monty Thompson, Dave Schwamburger. Row one: Tim Donley, Terry Shuter,

John Hammond, Dennis Stevens, Neil Gilliland, Mike Arthur. Row two: Sharon Richey, B.Jo. Pogue, Sharon Mustard, Debbie White, Gail Adams, Pam Payton, Susan Jordan, Terri Kisor, Jennie Wickline, Elaine Bussler, Nancy Coey, Betty Bussler.



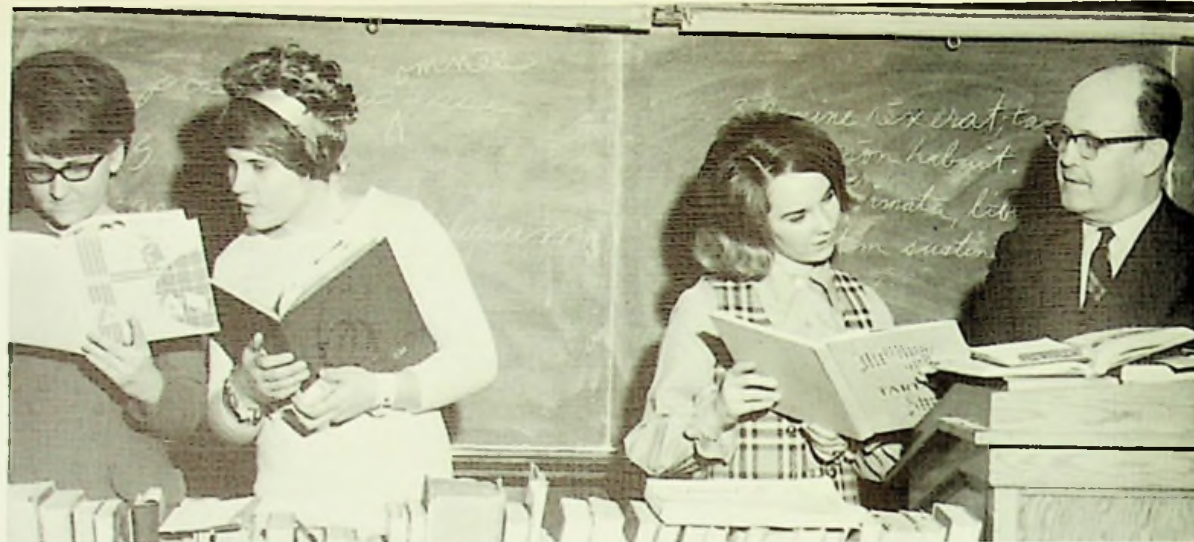
The Nature Club had a weiner roast and several meetings during the year for members. They are pictured here. Row 1: Paula Holland, Cindy Secret, Alice Lykins, Elaine Lyon, Pauline Holland, Betty Bussler, Bev Sparks, Carol Howard, Connie Buchanan. Row 2: Sharon Richey, Shannon Thompson, Nancy Jordan, Jamie Welch, Betsy Arn, Janie Sergeant. Row 3: Betty Montavon, Pam Rhodes, Patty Riggs, Nancy Sapp, Jeanie White, Vickie Tipton, B. Jo. Pogue. Row 4: Elaine Bussler, Linda Holbrook, Sue Williams, Kim McCann, Debbie White, Connie Filkins, Terri Kisor. Row 5: Karen Richey, Diann Noble, Martha Noel, Karen Patz, Jennie Milliron, Belinda

Welch. Row 6: Gail Adams, Susan Jordan, Mary Bayerl, Jami Spriggs, Kathianne Evans, Robin Jenkins, Debbie Barr. Row 7: Vicki Swick, Sherry Flinders, Pam Payton, Sherry Corrin, Lisa Swick, Kathy Mauk, Rita Baer. Row 8: Steve Bailey, Randy Ross, Ty Marsh, Tim Donley, Sim Martin. Row 9: Terry Shuter, Jim Kennedy, John Hammond, Dave Hart, Jeff Walburn, Jerry Coburn, John Curtis, Tom Swavel, Jim Walburn. Row 10: Monty Thompson, Dave Schwamburger, J.R. Douglas, Tim Liles, Tom Sherman, Jay Davis, Rod Sturgill.



Front: J.R. Douglas-vice president. Back: Debbie White-reporter, Pam Payton-secretary-treasurer, B. Jo. Pogue-president.

annual staff



Editorial Staff: Debbie White-Editor, Terri Kisor-Assistant Editor, Jennie Wickline-Business Manager, Mr. Stevenson-Advisor.



Besides putting a yearbook together, the annual staff had to help the senior class finance some of its activities. Staff members sold ads to merchants and yearbooks to students, and sponsored the Tartan King and Queen dance.

Seated are Bev Sparks, Kathy Mauk, Susan Jordan, Debbie White, Linda Gampp, Jennie Wickline, Kim McCann, Terri Kisor, Nancy Coey. Standing: Gail Adams, Pam Payton, Lisa Swick, Dennis Stevens.



Row 1: Linda Gampp, Kim McCann, Sharon Richey.
 Row 2: Suzann Bonzo, Jami Spriggs, Karen Rickey, J.R. Douglas, Gail Adams, Pam Payton. Row 3: Barbara King,

Kevin Christopher, Darrell Stapleton, Bob McCann, Jeff Hood, Sherry Hamm.

library staff



Besides giving valuable aid to Mr. McNamara in operating the library, the library staff also took a group trip. This year's librarians are Cecellia Mohr, Herb Jarvis, Tony Selbee, Pam Robbins, Brenda Burns, Rita

Baer, Mike Martin, Kathy Moore, Mrs. McNamara, Mary Blankenbeckley, Gloria Burgess, Linda Cole, Patty Cole, Rosana Goundry, Vicki Tipton.

pep club



Row 1: Cheerleaders-Mary Bayerl, Paula Holland, Rhonda Fankell, Nancy Jordan, Connie Phillips, Bev Sparks, Pauline Holland, Betty Bussler, Vicki Williams, Anita Collins. Row 2: Louvena Smith, Cyndee Secrest, Nancy Coey, Carol Watts, Teresa Warden, Nancy Holland, Mary Berry. Row 3: Mara Johnson, Jamie Welch, Shannon Thompson, Donna Cooper, Jennie Milliron, Belinda Welch, Kim McCann, Sue Williams. Row 4: Karen Tipton, Pam Rhodes, Jeanie White, Patty Riggs, Debbie White, Patty

Bayerl, Carol Howard, Linda Holbrook. Row 5: Karen Patz, Pam Martin, Sherry Hock, Connie Filkins, Ruth Frazier, Leita Bussey, Denise Etterling, Kathy Adams, Sharon Richey. Row 6: B. Jo Pogue, Terri Kisor, Joy Stevens, Sharon Mustard, Gail Adams, Lisa Swick, Susan Jordan, Kathy Mauk. Row 7: Jerry Coburn, Steve Wineke, Rita Baer, Sherry Corrin, Pam Payton, Vicki Swick, J.R. Douglas, Kevin Felts, Bob McCann.



Row 1: Jeff Gerard, Jeff Mauk, Bob Horton, Jeff Hood, Kevin Christopher, Chris Watts. Row 2: Suzann Bonzo, Sue Bussler, Elaine Lyons, Mark Ramey, Kathianne Evans. Row 3: Sharon Richey, Jami Spriggs, Terri Kisor, Tony

Selbee, Susan Jordan, Debbie White, Ty Marsh, Alice Lykins, Rick Bateman, Robin Jenkins, Marcella Elliot, Karen Richey.

chem-bi-sci



Officers: Terri Kisor-treasurer, Ty Marsh-co-president, Jami Spriggs-reporter, Robin Jenkins-vice president, Jeff Hood-co-president.



Row 1: Vicki Tipton, Kathy Moore, Sue Williams, Mrs. Cook, Sharon Snyder, Margie Maynard, Patty Burris. Row 2: Patti Chamberlin, Nancy Coey, Ruth Frazier, Pam Martin, Elaine Bussler, Debbie Chamberlin, Jennetta

Breech, Mary Blankenbeckly, Rita Bear, Louvena Smith, Kathy Hollingsworth, Mary Cole, Karen Tipton, Brenda Burns, Joyce Hilliard, Cheryl Burns.

f.h.a.

Officers: Margie Maynard-treasurer, Joyce Hilliard-parliamentarian, Debbie Ogg-recreation leader, Kathy Moore-sec-

retary, Sharon Snyder-president, Vicki Tipton-songleader, Patti Burris-historian, Sue Williams-vice president.

girls' league



The Girls' League, sponsored by Mrs. Violet Cook, directed the big and little sister program and a Christmas party for all Girls' League members. Officers are Sharon Mustard-treasurer, Sue Williams-president, Connie Filkins-vice president, and Pam Payton-secretary.

student council



The Student Council this year wrote a constitution, sponsored a drive for Muscular Dystrophy, collected for the Salvation Army and helped make the student views known. The representative are seated: Barb Price,

Pauline Holland, Betty Bussler, Sharon Mustard, Penny Jordan, Kathy Adams. Standing: Tom Swavel, Randy Jones, Denny Chamberlin, John Jordan, Steve Sturgill, Darrell Stapleton, Rod Chamberlin, Jeff Mauk, Bruce Horton.



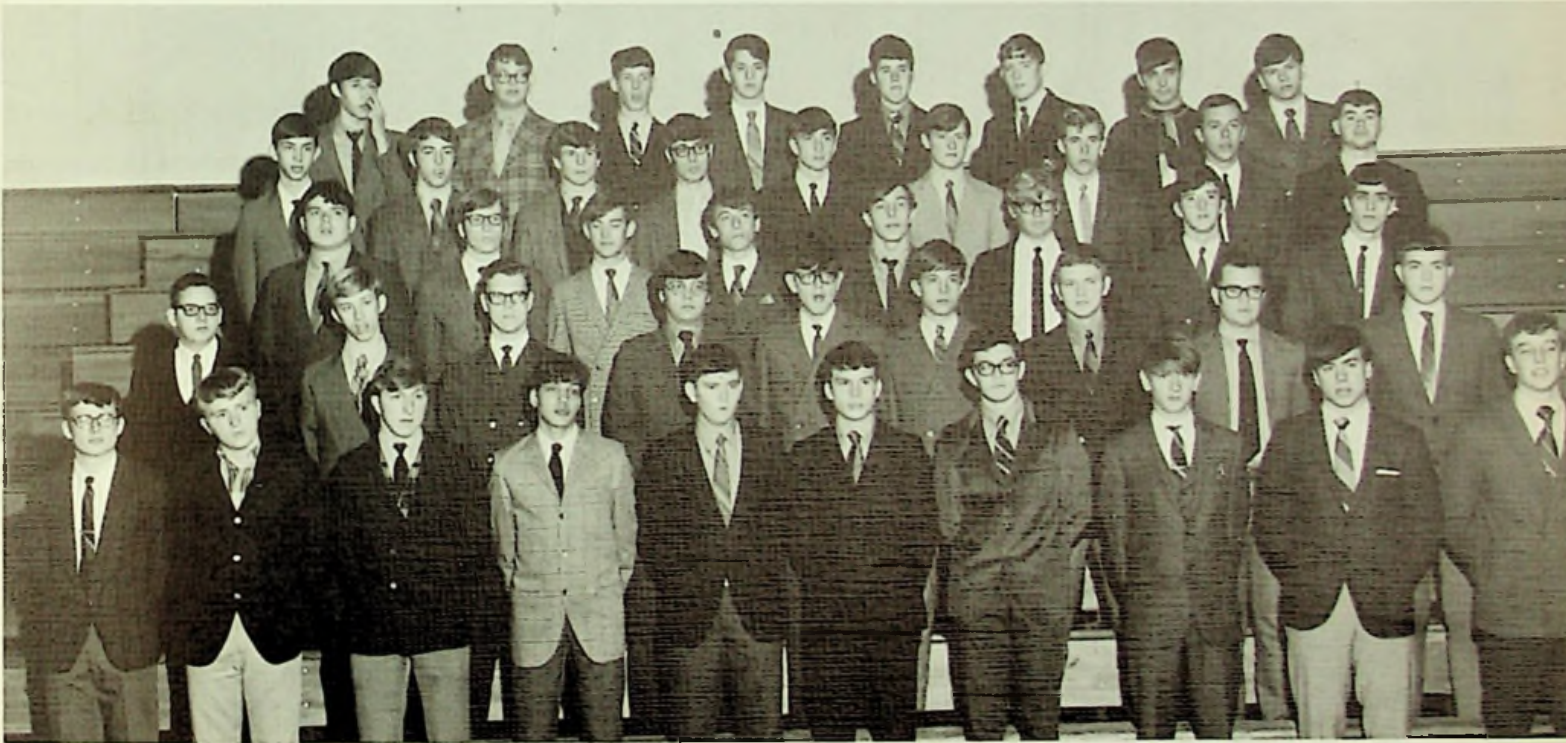
Row 1: Mark Ramey, Mitch Hammond, Joe Kisor, John Bush, Steve Benner, Sim Martin, Mary Berry, Debbie Hicks, Cheryl Burns, Rhonda Fankell, Anita Moore, Bev Sparks, Carol Howard, Jane Winkler, Connie Philips. Row 2: Bob Castle, Cliff White, Bill Etterling, Jerry Coburn, Rick Fankell, John Hammond, Jim Cropper, Carol Watts, Sharon Clare, Vicki Smith, Debbie Chamberlin, Jennie Wickline, Debbie Bloomfield, Jane Newlan, Joyce Musser. Row 3: Jeff Frazier, John Jordan, Ron Peecher, Greg Morton, Bennie Hall, Larry Whitt, Tony Selbee, Brenda Kilgore, Pam Martin, Karen Tipton, Mara Johnson, Angie Johnson, Jamie Welch, Sharon Jones, Vicky Tipton, Teresa Warden. Row 4: Mike Musser, Mark Allard, Mike Neal, Benny King, Jim Kennedy, Dave Hamilton, Terry Williams, Ken Hall, Connie Filkins, Patti Chamberlin, Mary Cole, Sharon Hock, Patty Bayerl, Mary

Blankenbeckly, Debbie Johnson, Sandy Cook. Row 5: Dennis Stevens, Rodney Wilder, Steve Wineke, Bob McCann, Tom Swavel, Tom Castle, Tim Donley, Denise Etterling, Beinda Welch, Leita Bussey, Kathianne Evans, Debbie White, Susan Jordan, Kathy Adams, Teresa Miller. Row 6: Bub Simpson, Kenny Carter, Jeff Walburn, Jay Davis, Denny Sexton, Robin Jenkins, Patty Green, Jane Montavon, Suzanne Jordan, Doretha Wilson, Tammy Henry, Terri Kisor, Kathy Mauk. Row 7: Rod Sturgill, Randy Ross, Danny Mullins, Andy Sturgeon, Kathy Moore, Lisa Swick, Bev Leesburg, Joy Stevens, Pam Keller, Brenda Nickels. Under the direction of Mrs. Helen Basham, the glee club presented two concerts, one at Christmas along with the band and the other the annual spring concert.



Row 1: Mary Berry, Debbie Hicks, Cheryl Burns, Rhonda Fankell, Anita Moore, Bev Sparks, Carol Howard, Jane Winkler, Connie Phillips, Teresa Warden. Row 2: Carol Watts, Sharon Clare, Vicky Smith, Debbie Chamberlin, Jennie Wickline, Debbie Bloomfield, Jane Newlan, Joyce Musser, Vicki Tipton. Row 3: Brenda Kilgore, Pam Martin, Karen Tipton, Mara Johnson, Angie Johnson, Jamie Welch, Sharon Jones, Debbie Johnson, Sandy Cook,

Mary Blankenbeckly. Row 4: Connie Filkins, Belinda Welch, Tammy Henry, Leita Bussey, Patti Chamberlin, Mary Cole, Sherry Hock, Patty Bayerl, Kathy Adams. Row 5: Patty Green, Suzanne Jordan, Denise Etterling, Kathy Moore, Doretha Wilson, Kathianne Evans, Debbie White, Susan Jordan, Pam Keller, Kathy Mauk. Row 6: Robin Jenkins, Jane Montavon, Lisa Swick, Bev Leesburg, Joy Stevens, Terri Kisor, Brenda Nickells.



Row 1: Jeff Frazier, Mike Musser, Cliff White, Mark Ramey, Mitch Hammond, Joe Kisor, John Bush, Steve Benner, Sim Martin, Tim Donley. Row 2: Mike Neal, Mark Allard, Bill Etterling, Jerry Coburn, Bob Castle, Rick Fankell, John Hammond, Jim Cropper, Tom Castle. Row 3: Rodney Wilder, John Jordan, Ronnie Peecher, Greg Morton,

Benny Hall, Larry Whitt, Tony Selbee, Dennis Stevens. Row 4: Bob McCann, Jim Kennedy, Dave Hamilton, Tom Swavel, Terry Williams, Jay Davis, Denny Sexton, Ken Hall, Benny Hall. Row 5: Rod Sturgill, Andy Sturgen, Jeff Walburn, Bub Simpson, Steve Wineke, Danny Mullins, Kenny Carter, Randy Ross.



Point - Betty Bussler. Clockwise - Pauline Holland, Betsy Arn, Bonnie Turner, Lynda Coburn, Debbie Chamberlin, Patty Chamberlin, Nancy Coey, Betty Montavon, Karen Richey, Elaine Lyon, Sharon Snyder, Kim McCann, Sue Williams, Alice Lykins, Sharon Richey, Debbie White, B.Jo. Pogue, Vicki Swick, Pam Payton, Bev Leesburg, Kathy Mauk, Robin Jenkins, Patti Green, Susan Jordan, Gail Adams, Suzanne Jordan, Brenda Nichols, Debbie Barr,

Kathiann Evans, Rita Cook, Karen Patz, Elaine Bussler, Terri Kisor, Sharon Mustard, Connie Filkins, Jenny Milliron, Belinda Welch, Diane Noble, Martha Noel, Donna Cooper, Shannon Thompson, Nancy Jordan, Jamie Welch, Connie Phillips, Jennie Wickline, Sharon Clare, Rhonda Fankell, Bev Sparks. Middle - Advisors Miss Maderia and Mrs. McNamara.

tri-hi-y





Bottom to Top of Stem - Terry Shuter, Sim Martin, Tim Donley, John Hammond, Ron Peecher, Tim Liles, Ty Marsh, Jerry Coburn, Steve Bailey, Dave Hart, Jim Kennedy, Jerry Ogg, Jim Walburn. To the Left - Randy

Jones, Mike Harrison, Kevin Felts. To the Right - Tim Williams, Dennis Stevens, Neil Gilliland, Danny Baer, J. R. Douglas.

hi-y



Tri-Hi-Y and Hi-Y officers are: Row 1: Susan Jordan-secretary, Debbie White-treasurer, Sharon Mustard-president, Connie Filkins-chaplain, Kathy Mauk-vice president, and Sharon Clare-sergeant-at-arms. Row 2: Tim Williams-president, Dave Schwamburger-chaplain, Danny Baer-treasurer, Neil Gilliland-secretary, Sim Martin-sergeant-at-arms, and Terry Shuter-vice president.



Row 1: Sue Williams, Elaine Lyons, Vicki Swick, Shannon Thompson, Elaine Bussler, B. Jo Pogue, Sherry Flinders. Row 2: Linda Holbrook, Vicki Williams, Jeanie White, Mary Bayerl, Anita Collins, Penny Jordan, Paula Holland. Row 3: Mr. Garner, Sharon Richey, Connie McGraw, Janie Sergent, Kevin Mershon, Jeff Mauk, Kathianne Evans, Debbie Barr, Jeff Hood, Chuck Rose, Tim

Liles. Row 4: Sharon Snyder, Bill Carter, Robin Jenkins, Barb Price, Jami Spriggs, Marlena Adkins, Ruth Holland, Joe Van Dyke, Tim Jennings, Nancy Sapp. Row 5: Betty Montovan, Karen Richey, Rusty Wolfe, Gary Morris, Martha Noel, Diane Nobel, Connie Buchanan, Bruce Horton, Connie Clithero, Lola Felty. Row 6: Mike Gire, Kathy Morgan, Suzie Bussler, Keith Morgan, Alice Lykins, Al

tartan marching band



Armbrister, Sam Yerardi, Randy Ross, Kathy Peecher, Jeff Gerard. This year the marching band marched in several parades and at football games, the concert band gave two concerts, and the pep band played at home basketball games. The band also sponsored a concert by the Kent State concert band and started raising money for new uniforms.



Drum Major: Tim Liles





Front: Marlena Adkins, Karen Patz. Row 1: Sue Williams, Linda Holbrook, Ruth Holland, Terri Kisor, Nancy Sapp, Bruce Horton, Martha Noel, Diann Noble, Betty Montavon, Barb Price, Sharon Snyder. Row 3: Shannon Thompson, B. Jo. Pogue, Connie Clithero, Cathy Peecher, Sue Bussler, Connie Buchanan, Tim Jennings, Sharon Richey, Kathianne Evans, Bill Carter, Connie McGraw, Janie Sergent, Jeff Mauk, Jeff Hood, Kevin

majorettes

Majorettes 1969-70 on this page (top to bottom) were Elaine Bussler, Vicki Swick, Shannon Thompson, B. Jo Pogue and head majorette, Sue Williams.



Row 1: Randy Ross, Kathy Morgan, Barb Price, Martha Noel, Connie Buchanan, Diane Noble, Karen Richey, Jami Spriggs, Marlena Adkins, Mr. Garner. Row 2: Jeff Mauk, Debbie Barr, Jeff Hood, Janie Sergent, Sharon Richey, Kathianne Evans, B. Jo Pogue, Connie

Standing (left to right): Joe VanDyke, Vicki Swick, Tim Liles, Sue Williams, Diann Noble, Sam Yeardi. Seated: Mr. Garner.



concert band

Mershon. Row 4: Mr. Robert Garner-director, Mike Slack, Kathy Morgan, Keith Morgan, Alice Lykins, Sam Yerardi, Al Armbrister, Randy Ross, Vicki Swick, Elaine Bussler, Sherry Flinders, Mike Gire, Jeff Gerard, Gary Morris, Debbie Barr, Elaine Lyon, Karen Richey, Robin Jenkins, Tim Liles, Joe Van Dyke.



majorettes

Majorettes on this page (top to bottom) are: co-head-Sherry Flinders, Elaine Lyons, Nancy Sapp and Linda Holbrook.



pep band

Clithero. Row 3: Al Armbrister, Alice Lykins, Gary Morris, Joe Van Dyke, Bill Carter, Robin Jenkins, Kevin Mershon, Kathy Peecher. Row 4: Tim Liles, Mike Gire.



band council



CONGRESS. JULY

Unanimous Declaration of the Thirteen United States of America

When in the course of human events, it becomes necessary for people to alter or to abolish the political bands which have connected them with another, and to assume among the powers of the earth, the separate and equal station to which the laws of Nature and of Nature's God entitle them, a decent respect to the opinions of mankind requires that they should declare the causes which impel them to the separation.



John Hancock

John Hancock

Thomas Jefferson

Benjamin Franklin

John Adams

Samuel Adams

Samuel Adams

John Jay

Richard Henry Lee

George Mason

George Washington

George Washington

Francis Pickens

Francis Pickens

Francis Pickens

*outstanding
teenagers
of
america*



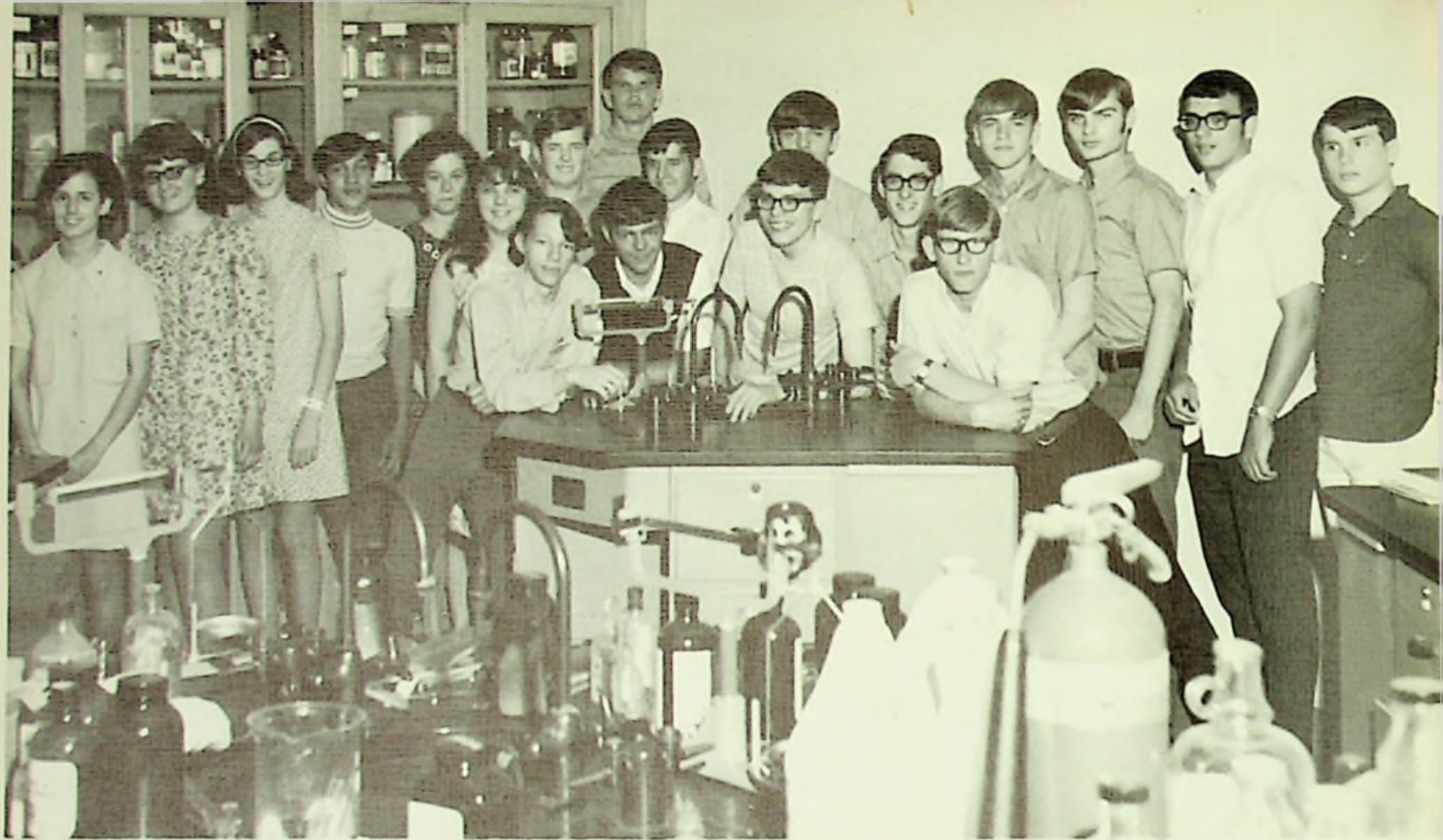
Jennie Wickline, Dave Hart, Terri Kisor

state board certificate



Row 1: Pam Payton, Sharon Mustard, Debbie White, Susan Jordan, Terri Kisor. Row 2: Dave Hart, Neil Gilliland. They received this by completing four

units of English, three units of mathematics, three of science, three of social studies, and three units of foreign language.



science projects

Front Row: Keith Morgan, Jeff Gerard, Jeff Hood, Jim Clark. 2nd Row: Bev Sparks, Debbie White, Karen Richey, Mark Ramey, Cecilia Mohr, Teresa Miller, Randy Howell,

Kevin Mershon, Tim Jennings, Jeff Mauk, Dave Gardner, Stewart Williams, Ray Fankell, Joe Kisor. Back-Danny Baer.

district science fair

state fair



Karen Richey, Jeff Gerard, Cecilia Mohr, Danny Baer, Jeff Hood, and Jeff Mauk all took their science fair projects to the Ohio University District Science Fair.



Danny Baer went all the way to Columbus to the State Science Fair and came out with a superior rating.



The salutatorian (at left) this year was Terri Kisor (3.77 average) and the valedictorian (3.80 average) was Jennie Wickline.



Debbie White received the Betty Crocker Award by scoring the highest of all the senior girls at East who took the Betty Crocker test.



Each year one girl taking senior home ec is chosen by Mrs. Cook to receive a set of silverware chosen by the girls themselves. This year's recipient was Kathy Moore.



These two girls achieved the almost impossible task of being present every school day for four years. They are (left) Debbie White and (right) Gloria Burgess.

national honor society

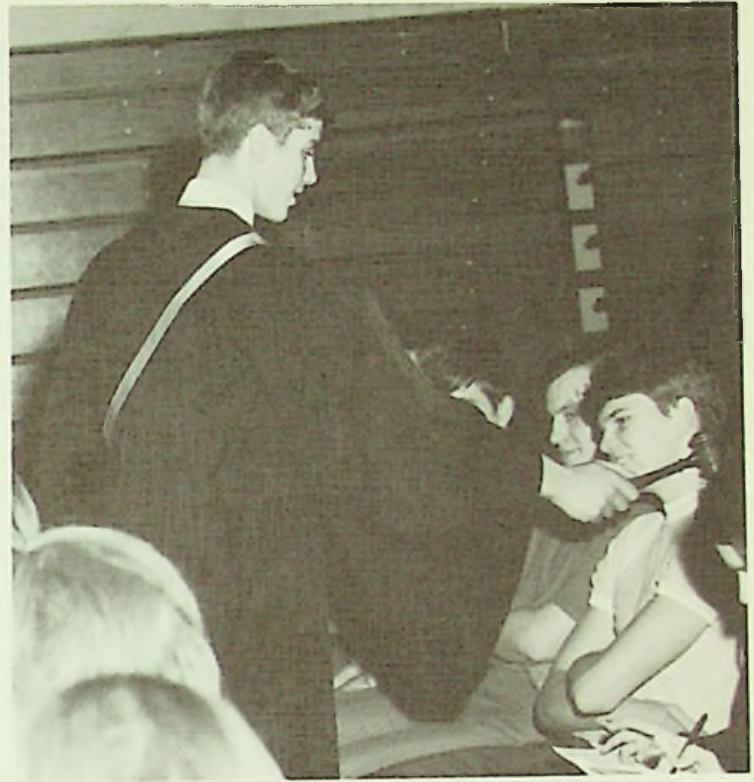


Old Members Kathy Mauk, Jennie Wickline, Dennis Stevens, Debbie White.



78 Old and New Members Seated-Kathy Mauk, Jennie Wickline, Dennis Stevens, Debbie White. Standing-Denny Chamberlin, Terry Shuter, Jan Bradley, Sharon Richey,

Danny Baer, Karen Richey, Magnus Hald, Suzann Bonzo, Doug Martin, Sharon Mustard, Tim Williams, Terri Kisor.



scholarship team

ENGLISH I

Kathy Adams 1
Connie Clithero 1
Camellia Kingery 1

ENGLISH II

Gay Bryan 1
Leita Bussey 1
Janie Sergent 2

ENGLISH III

Bill Carter 1
Donna Cooper 1
Mark Ramey 3

ENGLISH IV

Susan Jordan 3
Kim McCann 2*
Pam Payton 2

LATIN I

Sharon Hock 1
Bruce Horton 1
Joe Kisor 1

LATIN II

Jeff Hood 2
Darrell Stapleton

SPANISH I

Steve Bailey 1
Suzann Bonzo 3
Bill Etterling 2

SPANISH II

Terri Kisor 4*
Dennis Stevens 4
Jennie Wickline 4*

ALGEBRA I

Mike Clausing 1
Ray Fankell 1
Jeff Gerard 1

ALGEBRA II

Kevin Christopher 2*
Dennis Weaver 2*
Vicki Swick 2

freshman team



Row 1 (left to right): Jeff Gerard, Donnie Price, Tim Jennings, Bruce Horton, Ray Fankell, Mike Clausing. Row 2: Keith Morgan, Camellia Kingery, Connie Clithero, Sharon Hock, Kathy Adams, Joe Kisor.

sophomore team



Row 1 (left to right) Kevin Mershon, Dennis Weaver, Jeff Hood, Jeff Mauk, Joe Van Dyke, Kevin Christopher. Row 2: Leita Bussey, Janie Sergent, Jami Spriggs, Gay Bryan, Debbie Johnson, Teresa Miller.

junior team



Row 1 (left to right): Mark Ramey, Rick Bateman, Doug Martin, Tom Sherman, Dennis Chamberlin, Bill Etterling, Bill Carter. Row 2: Ty Marsh, Dave Harrison, Terry Williams, Vicki Swick, Sharon Richey, Donna Cooper, Karen Richey, Pauline Holland, Steve Bailey, Jerry Ogg.

senior team



Row 1 (left to right): Neil Gilliland, Tim Williams, Dave Schwamburger, Danny Baer, Dennis Stevens. Row 2: Sim Martin, Jennie Wickline, Kim McCann, Susan Jordan, Pam Payton, Terri Kisor, Jane Newland, Terry Shuter.

GENERAL SCIENCE

Tim Jennings 1.
Keith Morgan 1
Don Price 1

BIOLOGY

Debbie Johnson 1
Kevin Mershon 1
Teresa Miller 2

CHEMISTRY

Pauline Holland 3
Karen Richey 3*
Tom Sherman 3

PHYSICS

Danny Baer 4*
Neil Gilliland 2
Tim Williams 1

WORLD HISTORY

Jeff Mauk 1
Jami Spriggs 2
Joe Van Dyke 2*

BOOKKEEPING I

Dave Harrison 1
Jane Newlan 1
Terry Williams 2

GEOMETRY

Denny Chamberlin 3*
Doug Martin 3**
Jerry Ogg 1

CIVICS

Sim Martin 4*
Terry Shuter 4
Dave Schwamburger 1

AMERICAN HISTORY

Rick Bateman 2
Ty Marsh 3
Sharon Richey 2



district winners

Row 1: Don Price, Keith Morgan, Joe Kisor, Jeff Hood, Jeff Gerard, Steve Bailey. Row 2: Mark Ramey, Joe Van Dyke, Karen Richey, Janie Sergent, Suzann Bonzo, Terri

Kisor, Pauline Holland. Row 3: Tom Sherman, Dennis Chamberlin, Terry Shuter, Doug Martin, Danny Baer, Dennis Weaver.



state winners

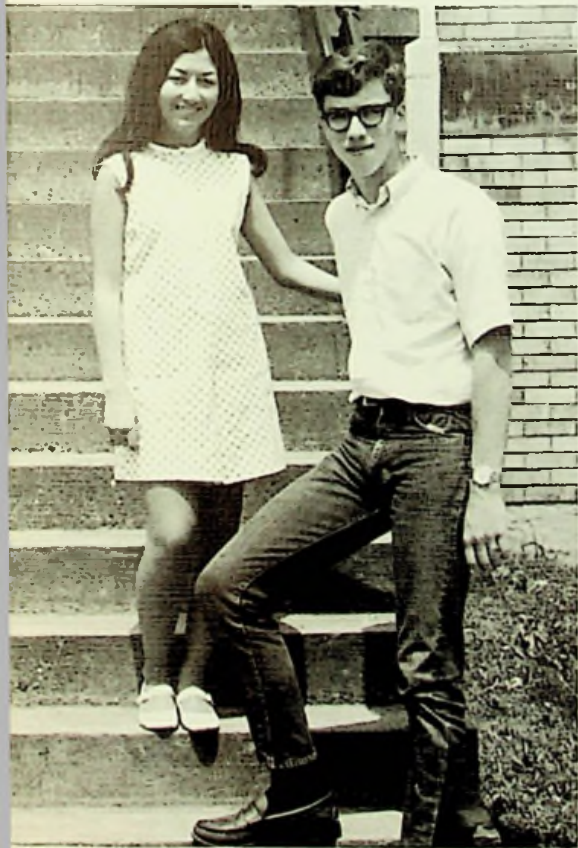
Dennis Weaver, Doug Martin, Joe Kisor, Keven Christopher also was a state winner, but is not pictured.



Sharon Mustard was this year's recipient of the Sandy Pence Award given to the student whom the teachers choose as the most outstanding senior.



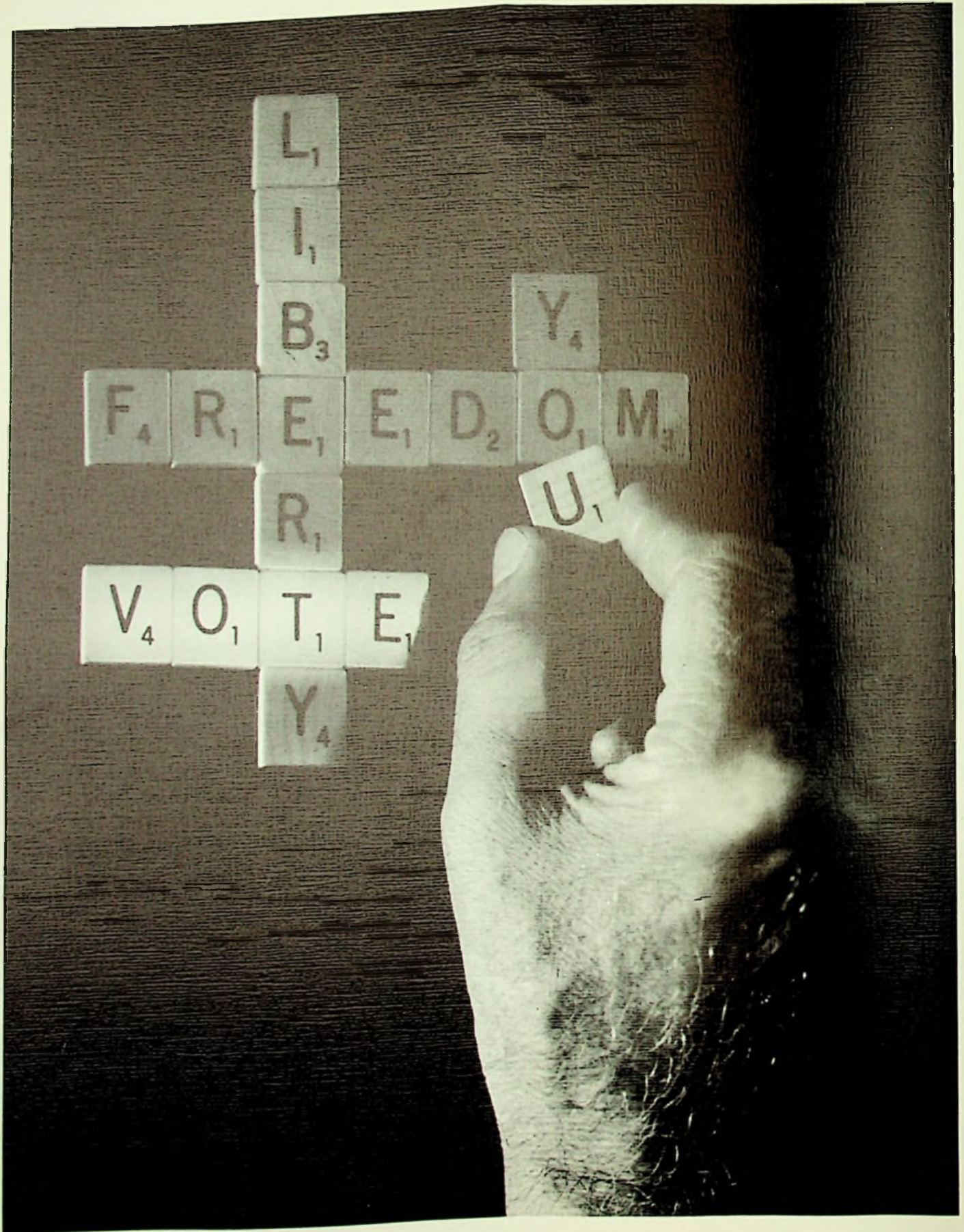
Each year the Daughters of the American Revolution give a test to two senior girls chosen by the civics teachers. The girl with the highest score receives the school's D.A.R. Good Citizen Award. This year's winner was Terri Kisor.



This year's representatives to Girls' State and Boys' State were Pauline Holland and Doug Martin. Here the students take part in a mock government and in doing so they learn more about the United States government.



Chosen as the most outstanding junior was Doug Martin. He was selected by the teachers; and Kathy Mauk, last year's winner, presented the Junior Cup to Doug.



Activities



Debbie White, Candy Striper



Terry Kisor, Candy Striper

senior jobs



Pam Payton and Gail Adams, Teacher's Aids



*homecoming queen
sharon mustard*



Senior Attendant
Bev Sparks

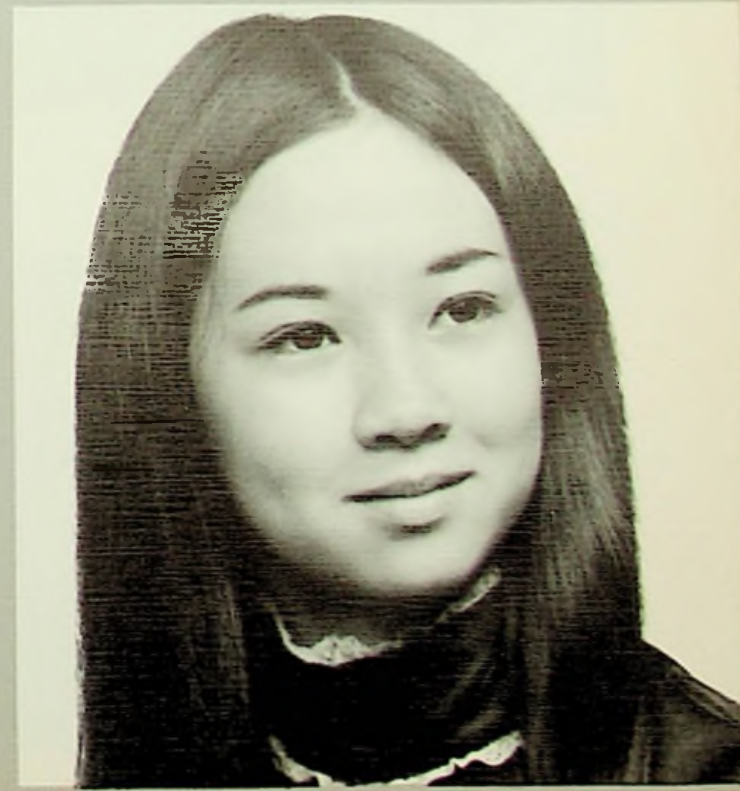


Junior Attendant
Sherry Flinders

homecoming 1969



Sophomore Attendant
Penny Jordan



Freshman Attendant
Nancy Holland

"on the light



fantastic toe;”



tartan king and queen

shannon thompson and tom swavel



| | |
|------------|-----------------|
| Seniors | \$303.13 |
| Juniors | 427.97 |
| Sophomores | 88.90 |
| Freshmen | 67.16 |
| Totals | <u>\$887.16</u> |

The money collected from this project goes to the aid of the annual. The staff sincerely thanks the participants.



Seniors
Sue Williams and Dave Hart



Freshman
Debbie Wamsley and Ray Fankell



Sophomores
Connie Buchanan and Rod Chamberlin

Seniors on senior day.



Others - including Solange Batre de Bailey who spoke to the foreign language classes; the others are some OU science fair participants and drivers.



The senior banquet.



extra special - achievements in many fields



Mrs. Elsie Bradshaw was named one of the eleven outstanding science teachers by the Ohio Academy of Science. Mrs. Bradshaw was named in the Southeastern District.



Karen Richey was our Tri-State Chemistry Test representative. Although she ranked high on the test, her score, unfortunately, wasn't among the highest.



One spring Sunday morning at 4:00 a.m. this new comet, named Bennett Hess, was photographed by Jeff Gerard. The exposure lasted four minutes.

Mike Harrison (dressed for a pep assembly) is presented an award from the pep club. He was named "Mr. Football".



Our representatives to the Ohio State University Conference were these two chemistry students, Suzann Bonzo and Stewart Williams. This conference, sponsored by the College of Agriculture at Ohio State, was attended by students from all over the state.

As a result of our yearbook designing contest several good entries were submitted. Unfortunately only one could be used, and up came this winning entry, drawn by Jeff Mauk.



Jeff Hood, sponsored by the Rotary Club, attended the Youth Symposium. Speakers from all over the country gave speeches on how one can relate science to the betterment of mankind.



Sharon Mustard was East's representative to the River Days Queen contest. Here she is pictured after being presented the "Miss Congeniality" award.

These six tracksters placed in district competition. They are row 1: Dave Hamilton, Ron Peecher, Cliff White; and row 2: Monty Thompson, Bob Horton, Darryl Davis.



Two of our track members were privileged enough to participate in the State Class A track meet. Dave Hamilton ran in the 100 yard dash and 220 yard dash, and Monty Thompson ran the 440 yard dash.

Although Monty didn't win anything, Dave captured first in both his events (the only person in the meet to do so) and thus earned the title of the outstanding athlete in Class A competition in the State.



Susan Jordan has been pianist for the vocal music concerts since she was in the seventh grade. This year terminates six years of service.

assemblies



cincinnati trip



As you can see, all is still dark as these foreign language students wait for the bus in preparation to leave for Cincinnati.



This view shows some of the seniors on their bus on their way.



Sharon Mustard and Linda Gampp try to help Elaine Bussler close her window. With the combined effort and many tries, they finally succeeded.



Kim McCann and Darrell Stapleton take advantage of the time it takes to reach Cincinnati to catch up on some of the sleep they lost the night before by getting up so early.



Here Bev Sparks and Linda Gamppgo shopping.



In this picture, the crowd is preparing to enter the theater, Playhouse in the Park, to see HENRY IV, PART I.



Mr. Garner directs the concert band.



In the top picture the boys' chorus performs and in the bottom picture the girls' chorus performs.



Mrs. Basham after a successful Christmas concert by the vocal chorus.



Rodney Wildner performed a solo accompanied by the entire glee club at the yearly spring concert.



The concert band plays a selection at the annual Christmas concert.



Mrs. Cook obviously enjoys Mr. Santa's presence.



Enjoying some refreshments are a few of the "big sisters."



*girls league party
and
tri-hi-y induction*

Some of the "little sisters" watch Mr. and Mrs. Santa Claus enter at the annual Girls' League Christmas party.



Mary White pours out her fondest hopes to her favorite friend at Christmas.



Mrs. MacNamara watches as Betsy Arn is officially inducted into the Tri-Hi-Y.



Members are lined up to be inducted at the ceremony held at the Sciotoville Methodist Church.



Lynda Coburn and Debbie Chamberlin (top), along with Karen Patz and Terri Kisor (right), walk down the isle of the church after their induction.





PROM '70



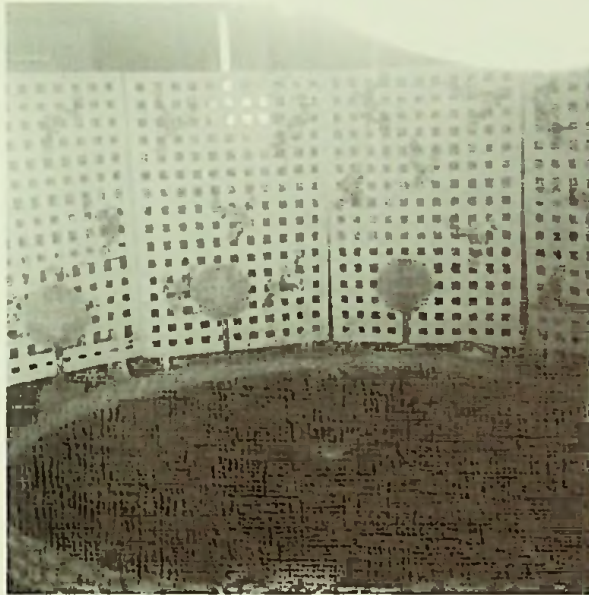
Clockwise around the table are these "promers": Sharon Mustard, Bev Sparks, Danny Baer, Terry Shuter, Betty Bussler, Connie Filkins, and Dave Schwamburger.



Vicki Swick and Mike Harrison enjoy the scenery.

So do Rod Sturgill and Sue Williams.





This fountain with its red water proved to be the center of attention at the prom.



Prom waitresses and butlers are, first row (left to right): Leita Bussey, Connie Bucannan, Linda Holbrook, and Paula Holland, and second row: Rod Chamberlin, Jim Roney, Joe Van Dyke and Lowell Welch.



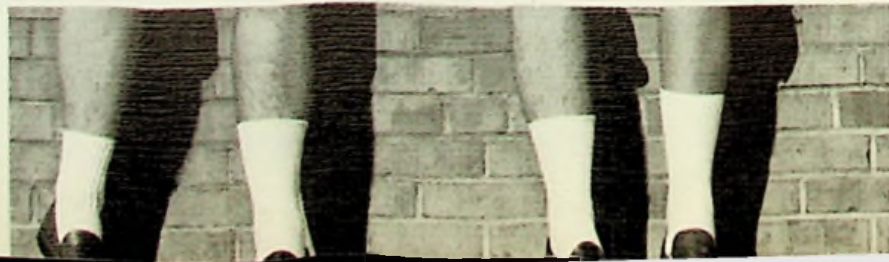
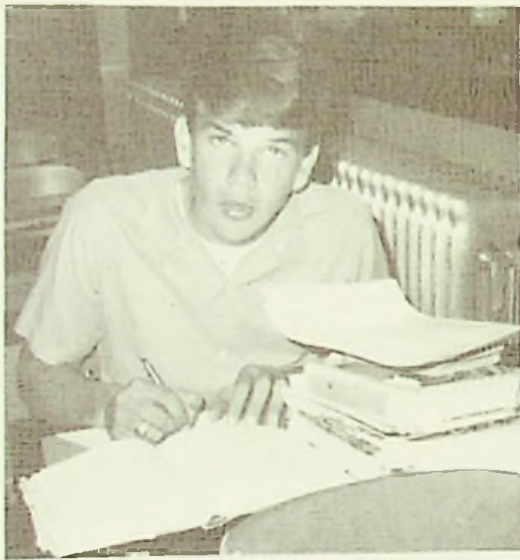
B. Jo Pogue and J. R. Douglas are obviously having a great time.



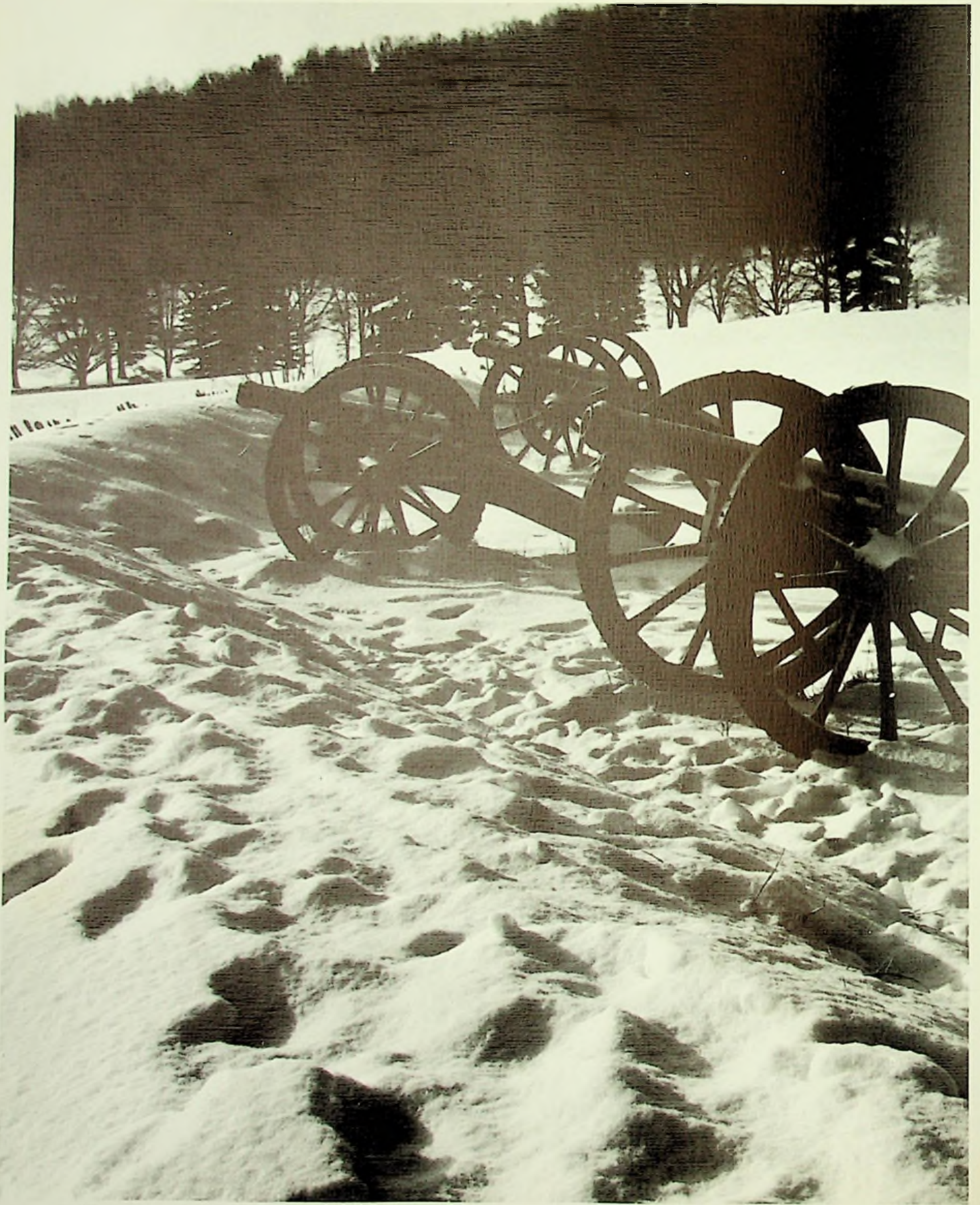
Eric Brown and Bob Marsh with their dates Karen Richey and Betsy Arn, respectively, pose for the camera.











Athletics

Danny Baer

Tim Williams



Dave Hart

Mike Harrison



Tim Donley

Sim Martin



Monty Thompson

Randy Jones





Benny Hall

Ron Peecher



Darrell Davis

Dave Hamilton



Gary Mayhew

Bob Horton



Jim Kennedy

Walter Holland

Tom Castle

Jerry Ogg



Cliff White

Eric Brown



Lowell Welch

Darrell Stapleton



Jay Davis

Jim Roney





Jeff Walburn



Curt Watts



Chris Watts



Jeff Welch



Rick Fankell



Glen Marsh



Andy Sturgeon



Dave Gardner



Coach-Jim Smith



Assistant Coach-Lou Carson



Manager-Neil Gilliland



Assistant Manager-Jeff Frazier



Honorable Mention S.O.C.-Tim Donley, Danny Baer, Dave Hart, Randy Jones, Ron Peecher, Gary Mayhew.



Sim Martin-Third Varsity Award; Most Valuable Player; All S.O.C.-All-Stars Guard; W.P.A.Y. All-Star Team; Captain. Dave Hamilton-Leading Scorer, East High; All S.O.C. Halfback; W.P.A.Y. All-Star.

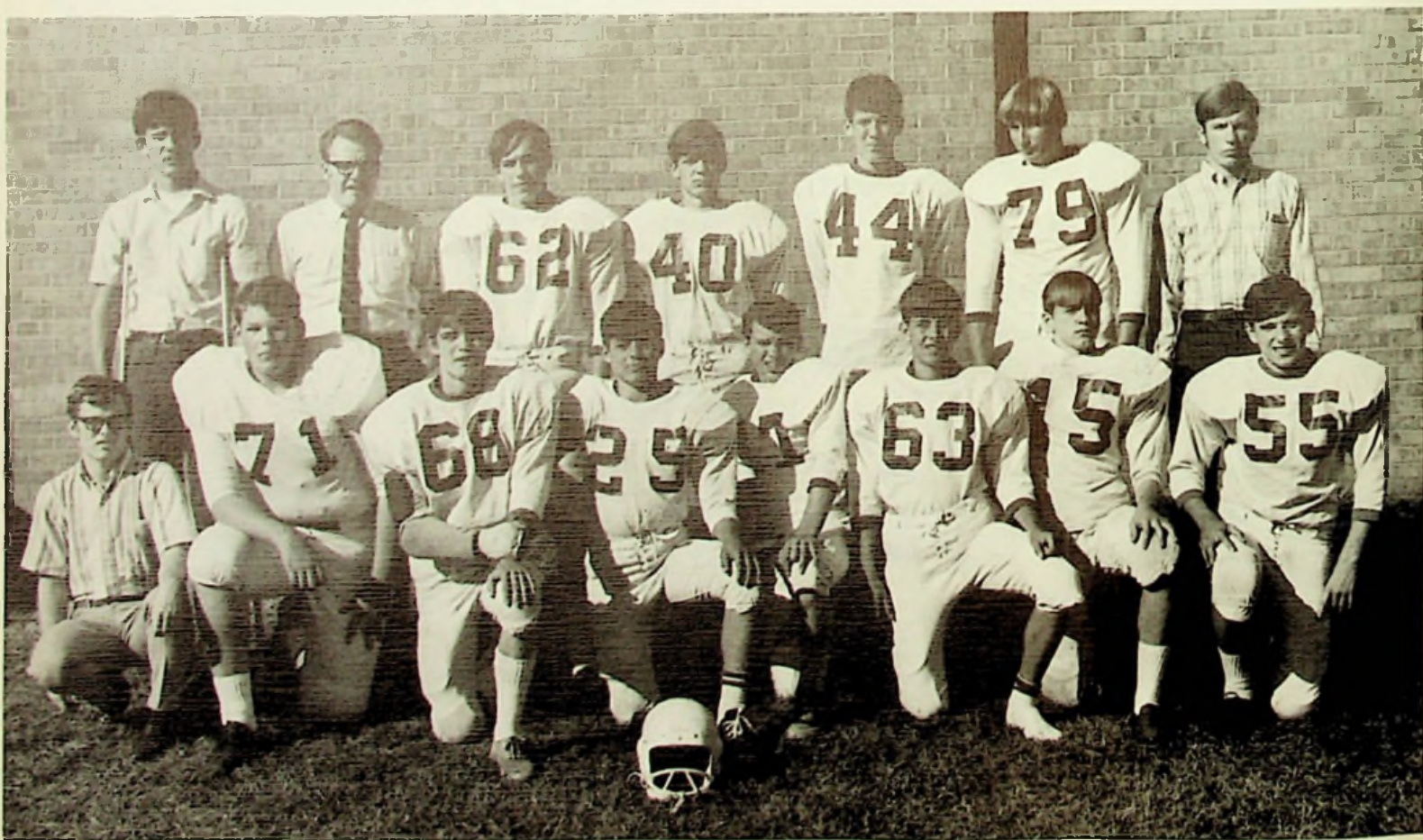


Monty Thompson-Outstanding Defensive Player 1969; All S.O.C. Defensive End; W.P.A.Y. All-Star Team. Tim Williams-Third Varsity Award; Honorable Mention-S.O.C. Offensive Tackle.





reserve squad



114 Row 1: Jeff Frazier, Andy Sturgeon, Chris Watts, Jeff Welch, Joe Kisor, Rick Fankell, Dave Gardner, Glen

Marsh. Row 2: Steve Sturgill, Coach Evans, Bennie Hall, Curt Watts, Jeff Walburn, Walt Holland, John Jordan.



Mr. Pogue



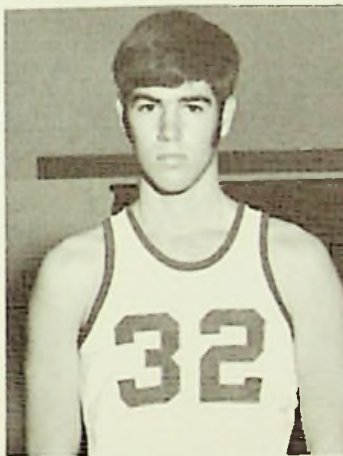
Danny Baer



Kevin Felts



Mike Harrison



Dave Schwamburger



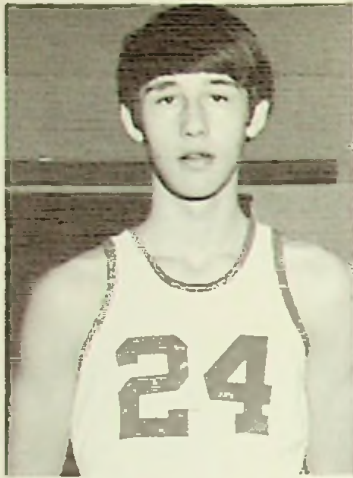
Dennis Stevens

| | | | |
|------|----|---------------|----|
| East | 70 | Wheelersburg | 75 |
| East | 44 | Valley | 77 |
| East | 81 | South Webster | 61 |
| East | 65 | New Boston | 62 |
| East | 68 | Wheelersburg | 86 |
| East | 62 | West | 69 |
| East | 68 | Notre Dame | 63 |
| East | 69 | Piketon | 71 |
| East | 77 | West | 75 |
| East | 67 | Minford | 83 |
| East | 68 | Notre Dame | 72 |

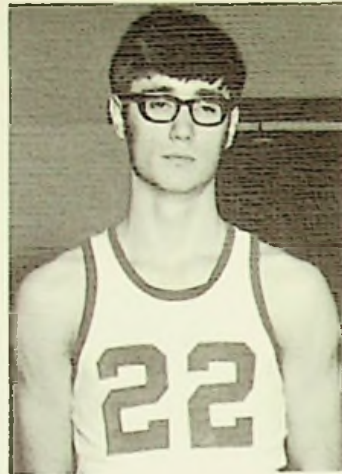
| | | | |
|------|-----|------------|----|
| East | 77 | Valley | 81 |
| East | 69 | Clay | 73 |
| East | 61 | Northwest | 85 |
| East | 82 | Eastern | 86 |
| East | 70 | Minford | 82 |
| East | 120 | Manchester | 52 |
| East | 72 | Waverly | 90 |

TOURNAMENTS

West Union - East 99, West Union 51
 South Webster - East 76, South Webster 82



Rod Sturgill



Tom Swavel



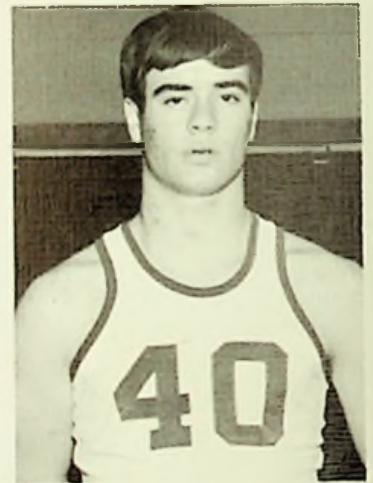
Jim McClintic



Darrell Stapleton



Steve Sturgill



Lowell Welch





reserve team



Row 1: Wayne Rooney, Tom Sherman, J. R. Douglas, Bub Simpson, Mitch Millhuff, Bob McCann. Row 2: Coach Lou Carson, Tom Donley, Joe Van Dyke, Doug Martin, Jay

Davis, Jim Roney, Bill Henderson, and Manager Jim McClintic.

freshman team



Row 1: Jeff Welch, Rick Fankell, Bruce Horton, Mike Clausing, Joe McClurg, Dave Gardner, Ray Fankell. Row 2:

Jeff Frazier, Rick Williams, Randy Perry, Coach Evans, Joe Schouster, Bruce Giles, Joe Kisor.

track



Row 1: Jeff Frazier, Rick Fankell, Curt Watts, Benny Hall, Cliff White, Ron Peecher, Coach Jim Smith. Row 2: Gary Mayhew, Harold Triplett, Jim Kennedy, Bob Horton, David Hamilton, John Jordan, Dave Gardner. Row 3: Jim

Walburn, Ray Fankell, Bruce Horton, Darryl Davis, Jeff Walburn, Jim Roney. Row 4: Bob Clausing, Butch Mills, Danny Baer, Monty Thompson, Neil Gilliland.



record holders



Row 1: John Cummings, Mike Clausing, Tim Donley, Sim Martin, Chris Nickolaysen, Tom Donley. Row 2: Coach, Lou Carson, Jeff Welch, Joe McClurg, Steve

Sturgill, Bob McCann, Lowell Welch, Darrell Stapleton, Asst. Coach Tom Evans.



| | |
|---------------|------|
| South Webster | 8-9 |
| Portsmouth | 11-0 |
| Portsmouth | 18-3 |
| Minford | 3-0 |
| Valley | 6-2 |
| Wheelersburg | 7-0 |
| New Boston | 4-5 |
| Green | 1-0 |
| Clay | 3-4 |
| Waverly | 4-1 |
| Minford | 4-1 |
| Wheelersburg | |
| (tourn.) | 5-4 |
| Northwest | 6-5 |
| Green | 8-7 |
| West | 4-6 |
| Clay (tourn.) | 3-5 |

reserve cheerleaders



Front: Mary Bayerl, Paula Holland, Penny Jordan. Back-Vicki Williams.

golf

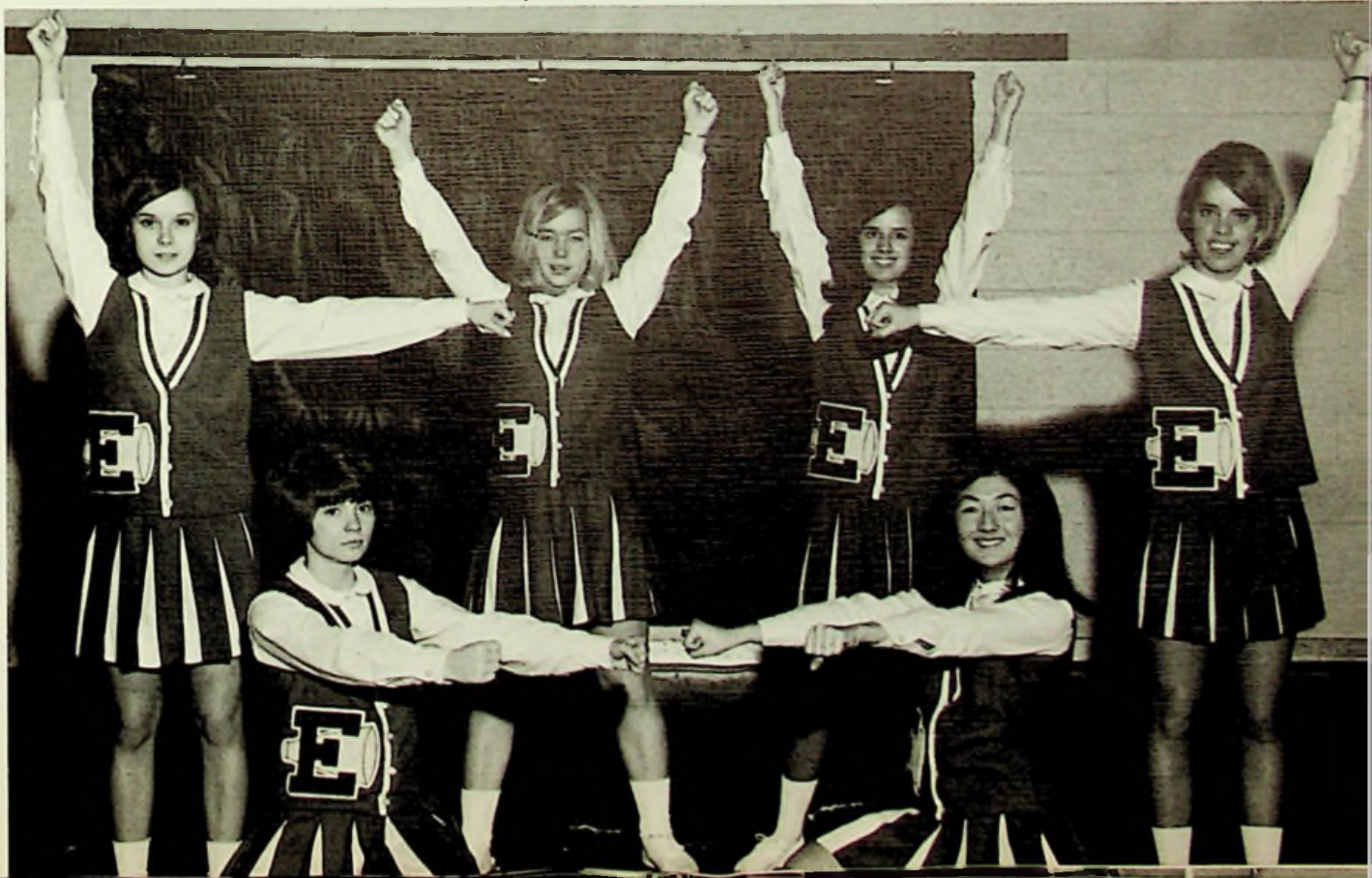


Left to right: Rick Bateman, Al Armbruster, Steve Weneke, Mr. Pogue, coach, Terry Shuter, Dave Schwamburger, Doug Martin.



Bottom to top: Betty Bussler, Pauline Holland, Rhonda Fankell, Bev Sparks, Connie Phillips, Nancy Jordan.

varsity cheerleaders





Faculty



Mr. James M. Roney has been the principal of East High School since 1964.



Serving as our guidance counselor at East is Mr. Herman Schomburg.



A graduate of East High School, teaching civics, psychology, and boys' physical education is baseball coach Lou Carson.



Our basketball and golf coach, Edward Pogue, also teaches world history and civics.



A newcomer to East High is Tom Evans, an American history, geography, and economics teacher, who also has assisted with our sports program this year.



Teaching business arithmetic, general math, and geometry is playboy Mike Welton.



While taking time out for teaching general science, earth science, and biology, Coach Jim Smith led both our track and football teams to winning seasons.



Named Outstanding Science Teacher of 1970, Mrs. Elsie Bradshaw is now teaching physical science, chemistry, and Algebra I and II here at East.



Keeping our girls in shape and teaching biology is Mrs. Ramona Horton.



Mrs. Irene Brown teaches the students at East pre-algebra, Algebra I, trigonometry, and physics.



Mr. John Stevenson teaches Latin, Spanish, and research and writing and sponsors the newspaper and yearbook, and manages the finances of the senior class.



Taking time out from his work at WNXT is Mr. Jim Rowland, who teaches speech and English II and III.



Teaching business English and English III and IV is Miss Phyllis Madeira who is a graduate of Marshall University.



Our roving English teacher who gave her room to the special education class is Mrs. Joyce Cropper.



Our home economics and family living teacher is Mrs. Violet Cook.



Our eligible bachelor teaching Book-keeping I and II along with Typing I is Mr. Jack Blankenship.



Mr. Darrell Lanthorn, who is leaving East to become principal of Jefferson High School, taught general business, Typing II, office practice, and Shorthand I and II here at East.



Robert Garner is director of instrumental music. This year the band received a 3 at contest in Ironton.



Heading the vocal music is Helen Basham. The glee club presented two concerts this year.

not pictured

Mrs. Betty Conley completes two years here at East. She controls the equipment and classes in the reading lab.

Virgil Donley teaches industrial arts, mechanical drawing, blueprint, and electricity. Mr. Donley is acting principal in the absence of Mr. Roney.

Dorothy Thompson spends the mornings at East teaching Art I and II.

office helpers



Ann Hossman
School Secretary



Linda Gampp, Kathy Turner, Jan Bradley, Sharon Mustard, Dave Hart, Karen Patz, Carolyn McGraw.



Helen Covey, Mildred Musser, Margaret Warnocky, Louise Munn, and Maxine De Hart served our delicious meals this year.

This year Betsy Arn sold ice cream while Susan Jordan and Terri Kisor served as cashiers.





Advertisements

practice makes perfect



... almost





MILLHUFF'S

Supermarket
Department Store
500 Harding Avenue
Sciotoville
Phone 776-6666

Department Store
Center Street
Wheelersburg
Phone 574-2016



Suzuki

SPORTSMOUTH

934 Gallia Street

Phone 354-3745

"Fun with Wheels"

Sales - Service - Parts



Thomas J. Gill

Jessie A. Gill

Gill Funeral Home

422 Harding Avenue

Sciotoville

Oxygen-Equipped
Ambulance Service

Phone 776-2115

Williams Furniture

Fine Furniture and Carpet

Nationally Known Brands

Everett Williams-Owner



Wheelersburg

Gallia Street

Phone 574-2022

Scioto Drug Co.

Gary B. Johnson



224 Harding Avenue

Sciotoville

Phone 776-6066

Where Hardware Gives Hardwear



Wheelersburg

Gerald T. Turner
Owner

Phone
574-2011

"Congratulations to the Class
of 1970
for a Job Well Done
and
Best Wishes for Continued
Success and Happiness in
The Future."

STATE SENATOR OAKLEY COLLINS

E. J. KENRICK COMPANY

Wholesale Distributers

Since 1866

119 Market Street Phone 353-3165

Cigarettes-Cigars-Candies-Sundries
and Institutional Foods and Papers

CITIZENS SAVINGS AND LOAN ASSOCIATION

507 Chillicothe St.
Portsmouth

\$15,000 minimum
one year
certificates



PORTSMOUTH INSURANCE AGENCY

836 Gallia Street
Portsmouth

Abe Arganbright

Dee Mauk

Martini's

"One of Ohio's Good Stores"

WOLFF

Better Clothes for Men and Boys
Since 1912

320 Chillicothe Street
Portsmouth

Wishes the
Class of 1970
. HEALTH
. HAPPINESS
. SUCCESS

DEEMER'S SUPER MARKET

404 Center Street
Wheelersburg



Phone 574-5512

Compliments of

MONTGOMERY WARD & CO.

500 Chillicothe Street
Portsmouth
Phone 353-3311

THE PIECE GOODS SHOP

409 Chillicothe Street
Portsmouth

REITZ MUSIC CENTER

713 Sixth Street
Portsmouth

Phone 353-5148

TALLERICO
INSURANCE AND REAL ESTATE

Peter Tallerico
Phone 574-2556

Wilda J. Tallerico
Phone 574-2062

Wheelersburg

LUTE PUMP AND PLUMBING SUPPLY

Phone 354-1790
519 Second Street
Portsmouth

Compliments of

BIG VALUE DISCOUNT

4144 Gallia Street
New Boston

POP'S DRIVE-INN AND RESTAURANT

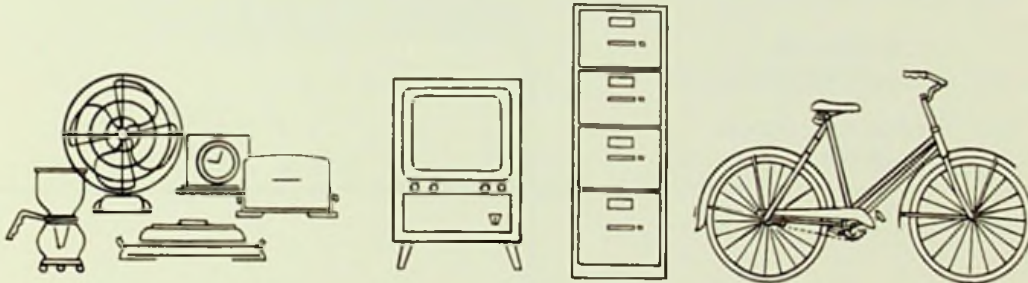
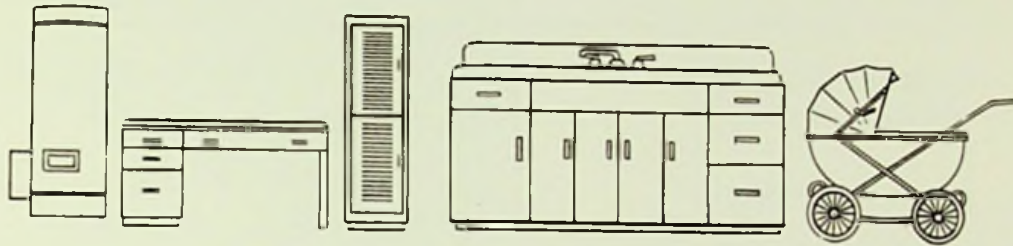


Wheelersburg

10 miles from Portsmouth
20 miles from Ironton
On Route 52



DETROIT STEEL CORPORATION and its employees are proud to be part of the American steel industry which has contributed so richly and so greatly to our nation's growth, prosperity and strength. On this page are a few of thousands of everyday items made from DSC quality steel products.



THE DEDICATED **DSC** STEEL COMPANY
DETROIT STEEL CORPORATION
PORTSMOUTH DIVISION

PORTSMOUTH DIVISION PRODUCTS: Coke • Coal Chemicals • Pig Iron • Basic Open Hearth Steel • Ingots • Blooms • Slabs • Billets • Wire Rods • Hot Rolled Sheets • Cold Rolled Sheets • Manufacturers' Wire (Low, Medium and High Carbon, Bright and Annealed) • High Carbon Spring Wire (M. B. and Upholstery Grades, Bright and Oil Tempered) • High Carbon Galvanized ACSR Wire • Welded Wire Fabric

ROCKWELL'S
FLORAL SHOP

7450 Ohio River Road
Sciotoville

Phone 574-2594



THE RECORD SHOP

813 Gallia Street
Portsmouth

"For Music Sweet or With a Beat"

B & J AUTO PARTS

Rt. #1

Wheelersburg

Phone 776-2017

CRISPIE CREME
DONUT SHOP

1202 Gallia Street
Portsmouth Phone 353-5890

Best Wishes

HARLAN DANNER

DISTEL FURNITURE

Name Brands
Rowe-Drexel-Stanley-Goebel

616 Chillicothe Street
Phone 354-3161

your

Scioto County Engineer

"Glass for Every Purpose"

PORTSMOUTH GLASS COMPANY

Paul Duplain, Owner

Compliments of

MARTHA'S CERAMICS

SCIOTO MOTEL

5709 Gallia Street
Sciotoville

Phone 776-2766

V
E
T
E
R
A
N
'
S

D
A
Y



A
S
S
E
M
B
L
Y

BETTY LEESBURG'S
BEAUTY SHOP

Rt. #1

Wheelersburg

Phone 574-2325

B & B LOAN CO.

Money Loaned on
Anything of Value
837 Gallia Street, Portsmouth
Phone 353-4250



Kathy Studies!?

ELECTRONIC
SALES AND SERVICE

Zenith Color TV
Stereo

1017 Harding Avenue Sciotoville
Phone 776-2744

WANDA WELCH
BEAUTY SHOP

613 Harding Avenue
Sciotoville Phone 776-6733

HANK'S
DAIRY LAND

Good Luck to the Seniors!

IDEAL MILK COMPANY

Daily Delivery of Dairy Products

1637 - 10th Street
Portsmouth

Phone 353-5191

McCLURG'S
RICH STATION

Best Wishes
To the Class of
1970

Compliments of

VANDERVORT
SUPPLY COMPANY

1536 Gallia Street
Portsmouth

Phone 353-1179

S
P
A
N
I
S
H

II



is

i
n
t
e
r
e
s
t
i
n
g?

| | |
|---|---|
| <p>COEY'S BARBER SHOP</p> <p>DICK GARDNER</p> <p>THE KOPY KAT</p> | <p>STAPLETON OFFICE SUPPLY CO.</p> <p>607 Chillicothe Street, Portsmouth</p> <p>Office Supplies and Equipment Smith-Corona and Royal Typewriters Clary and Victor Business Machines</p> <p>1946 Our 25th Year 1970</p> |
| <p>Compliments of</p> <p>SCHERER SERVICE STATION</p> <p>Harrisonville, North Moreland</p> | <p>J.W. STIR COMPANY</p> <p>Floors- Walls- Ceilings</p> <p>Phone 353-2105 516 Second Street</p> |
| <p>NEWMAN'S TIN SHOP</p> <p>434 Second Street, Portsmouth</p> | |
| <p>Best Wishes to the Class of '70</p> <p>ECONOMY HEATING COMPANY</p> <p>Warm-Air Heating and Air Conditioning</p> <p>7429 Ohio River Road Sciotoville</p> <p>Phone 574-6067</p> <p>Free Estimates</p> | <p>AMERICAN SAVINGS & LOAN ASSOCIATION</p> <p>Insured Savings - Home Financing</p> <p>Incorporated 1892</p> <p>503 Chillicothe Street, Portsmouth</p> <p>NEWBERRY SPORTING GOODS</p> <p>Specializing in Team Equipment</p> <p>2 Locations</p> <p>. Portsmouth 313 Chillicothe Phone 353-0644</p> <p>. Chillicothe 32 N. Paint Street Phone 775-1002</p> |

BORDON'S DAIRY PRODUCTS

Home Delivery Service

237 Second Street
Portsmouth

Phone 353-2153

DUVENDECK'S PAINT
STORE

5619 Gallia Street
Sciotoville

Phone 776-7333

JOHNSON'S GIFT SHOP

MR. WILLIAM EVANS

CHARLES EUTON REALTY

KOBACKER'S

405 Chillicothe Street
Portsmouth

Wedding Invitations
Mimeographing ... Offset Printing
HATCH ADVERTISING COMPANY

741 Sixth Street, Portsmouth
Phone 353-2726

JIM'S DAIRY LAND

Rt. 52

"Coolest Spot in Wheelersburg"



Hurry! Hurry! Hurry!

to

WHEELERSBURG
LUMBER

FRALEY REALTY

8077 Gallia Street
Wheelersburg

Phone 574-2190

"There's No Home Like The
One You Own."

Phone 574-2502

or

574-2503

at Interchange

THE LEWIS PIE COMPANY

1417 Fourth Street
Phone 353-3039 Portsmouth

OHIO VALLEY WHOLESALE CO.

714-716 Fifth Street
Portsmouth
Wholesale Candies and Tobaccos

MORGAN BROTHERS
JEWELERS

734 Fifth Street
Portsmouth

Phone 353-3259

"The Right Shoe
for the Right Foot
at the Right Price."

SCIOTO SHOE MART

615 Harding Avenue
Sciotoville

CREATIVE BEAUTY SHOP

222 Harding Avenue
Sciotoville

Phone 776-2474

Martha De Camp, Owner



Hibbitts Hardware Company

315 Harding Avenue

Phone 776-7880

Bob's Surburban Heating and Cooling



Rt. #2 at Dogwood Ridge
Wheelersburg
Phone 574-5652



Watch it, Betty!!?

C. HERMANN AND SONS PACKING COMPANY

| | | |
|-----------------|--------------------|----------------|
| | Meat Market | |
| Market | | Market |
| Eighth & Murray | | 913 Gallia |
| Phone 353-5166 | | Phone 353-0815 |
| | Packing House | |
| | 2640 Gallia Street | |
| | Phone 353-0180 | |

Compliments of

THE CORNER MARKET

Harding and Harrison
Sciotoville



R.C. BOTTLING
COMPANY

Best by
Taste Test

116 Jefferson
Portsmouth

JOE HIBBITTS NORGE LAUNDRIES

Wheelersburg
and
Sciotoville

Compliments of

PORTSMOUTH
INSURANCE AGENCY

836 Gallia Street
Portsmouth

Abe Arganbright - Dee Mauk



Phone 776-2362

PORTSMOUTH CEMENT AND LIME

Third and Jefferson Streets

Phone 353-2320 Portsmouth

GAMPP'S SERVICE STATION

Gasoline - Kerosene
Motor Oils - Fuel Oil

Slocum - P.O. Sciotoville

Compliments of

DR. O.T. MOORHEAD
and
DR. T.W. MOORHEAD

Sciotoville

SUMMERS & SON

Wurlitzer Pianos and Organs
Magnavox Stereos and TV
Band Instruments

319 Chillicothe Street
Portsmouth

RENE'S BEAUTY SHOP

Rt. 2 Sciotoville

Phone 776-6195

Irene Stiltner, Operator

Compliments of

MR. J. SHOES

THE CRITERION

Complete Men's Furnishings

819 Gallia Street
Portsmouth

CUSTOM CARPET COMPANY

729 Sixth Street
Phone 354-2893
Portsmouth

RHODES AVENUE SERVICE STATION

4012 Rhodes Avenue

New Boston

Phone 456-9952

BOOSTERS

SEARS, ROEBUCK AND CO.

GARRETT'S GROCERY

CHAMBERLIN'S BARBER SHOP

DR. WILLIAM HARTLAGE

BERINS' BARBER SHOP

EARL AND FRED'S BODY SHOP

SCIOTO COUNTY NEW CAR
DEALERS' ASSOCIATION

Frank Tiedge Ford

Capitol-Pontiac-Buick Inc.

Hanes Chevrolet Co.

Fred Brown Oldsmobile

Henry Oberling Motor Co.

REESE'S HAMBURGER
SHOP

5721 Gallia Street

Sciotoville

PUBLIC DISCOUNT SUNDRY

Health and Beauty Aids
318 Chillicothe Street
Portsmouth

W.I.O.I.

Radio Station and Broadcasting Co.

CECIL CAUDILL

ALUMINUM PRODUCTS CO.

Storm Windows-Doors-Awnings
Aluminum Siding-Railing-Post Columns
Bus. Phone 5737 Gallia
776-2151 Sciotoville

211 Masonic Building
Portsmouth

Phone 354-2801

"The Diamond Store in Portsmouth"



**BAER'S
SERVICE STATION**

State Route #140

Gasoline
Motor Oils
Fuel Oil
Batteries

Phone 776-6715

"Morrey" Wainstein 421 Chillicothe St.
Manager Portsmouth

CRICHTON OFFICE SUPPLY

740 Fifth Street
Phone 353-8290
Portsmouth

Art Supplies

John And Jim's Service Station



ASHLAND PRODUCTS

5803 Harding Avenue

Phone 776-9409



JOHNSON'S CORNER

Harding Avenue

Gas Station

Grocery Store

Polyclean

Best Wishes to
The Class of 1970

LAWSON DAIRY

Rt. #52 Wheelersburg

Phone 574-6051

Home Deliveries



We've been using Karen's camera this year!

COLONIAL
CARPET HOUSE

Wheelersburg

Phone 574-6553

HIBB'S HARDWARE

1723 10th Street
Portsmouth
Phone 353-2995



Colonial Florists

Carl and June Laack
Owners

"Your Satisfaction Is
Our Guarantee."

We Wire Flowers Anywhere.

220 Harding
Sciotoville

Phone 776-2542

NANCY RAE SUPER VALU



Open 6 Days A Week, 9 Til 9

State Route #52
Wheelersburg Phone 574-5542

Anna Lou
South Shore, Kentucky
Phone 932-4743

Best Wishes To The Class of '70



Houck & Kalb

Sciotoville



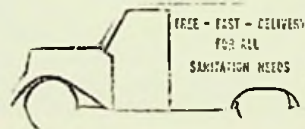
CLINE JENKINS SOHIO SERVICE STATION

5435 Gallia Street

Sciotoville

Compliments of

CLEANING SUPPLIES COMPANY



224 Court Street

Phone 353-5181

Portsmouth

HOWARD AND JOHN
BERNDT INSURANCE

709 Sixth Street

Portsmouth

Best Wishes from

RAY-BOB

Ray and Joyce Kemper, Owners
Wheelersburg



KAY JEWELRY

817 Gallia Street

Portsmouth's Most Complete
Jewelry Store
For Over Half a Century

NEW BOSTON REXALL PHARMACY

"Your Prescription Store"

4152 Gallia Street

New Boston

TRUE VALUE STORES

209 Market Street
Portsmouth

4342 Gallia Street
New Boston

PEPSI-COLA

"Pepsi Pours It On."

2415 Scioto Trail

Phone
353-3121



Portsmouth

Compliments of

LOUIS J. VETTER, JR.
INSURANCE

Representing:

Vetter & Sons, Inc.
739 Fifth Street
Phone 354-3139

Home:
2619 Grandview
Phone 353-4331

Best Wishes from

ATLAS FASHIONS

821-823 Gallia Street

Phone 353-3191

Save 60%
Shoes for the Entire Family
Lowest Prices on
Brand-Name Shoes
in the Tri-State Area

WEST END SHOE MART

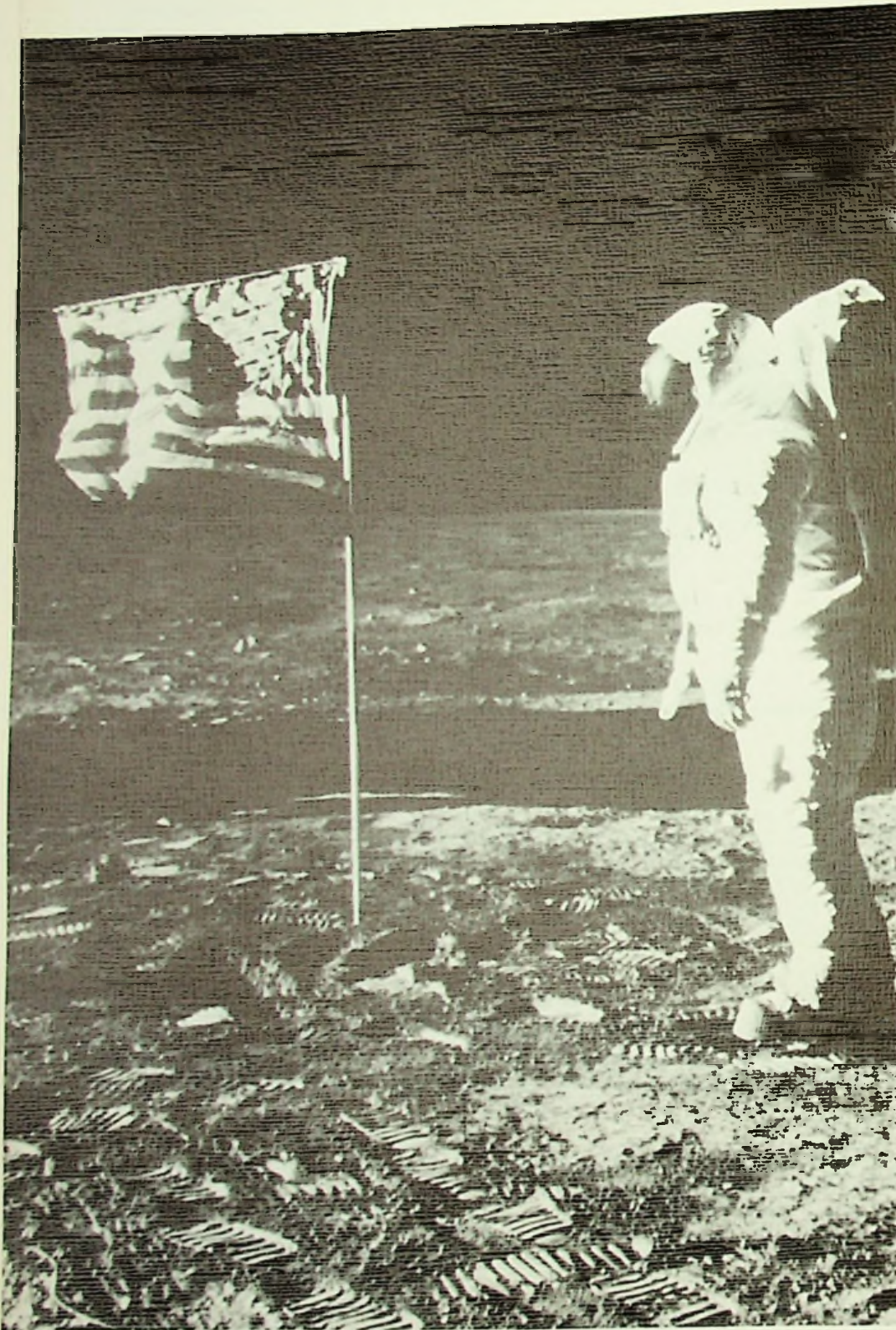
206-208 Market Street
Portsmouth

PORTSMOUTH BEAUTY COLLEGE

Dial 353-4002

Ruth Hall, Owner
Marie Heslep, Manager

902 Gallia Street
Portsmouth



On that famous Sunday of July 20, 1969, most of us watched by TV the first landing of man on the moon.

Perhaps never again shall we ever see anything more important and spectacular. When Columbus found a new world, only a handful were on hand as witnesses, but on this occasion almost countless millions had a ringside seat for that which down through the ages had been considered absolutely impossible.

Even if man reaches the other planets or gets out of this solar system, he can scarcely hope to do anything more dramatic than what we saw that day back in 1969.

Yes, we were really there and watched history in some of its greatest and best moments.

We the People

of the United States, in order to form a more perfect Union, establish Justice, insure domestic Tranquillity, provide for the common defence, promote the general Welfare, and secure the Blessings of Liberty to ourselves and our Posterity, do ordain and establish this Constitution for the United States of America.

Article I
Section 1
All legislative Powers herein granted shall be vested in a Congress of the United States, which shall consist of a Senate and House of Representatives.
Section 2
The House of Representatives shall be composed of Members chosen every second Year by the People of the several States, and the Electors in each State shall have the Qualifications requisite for Electors of the most numerous Branch of the State Legislature.
Section 3
The Senate of the United States shall be composed of two Senators from each State, chosen by the Legislature of the State for which they are appointed, who shall, when assembled, constitute a Body, which shall be styled the Senate of the United States.

Article II
Section 1
The executive Power shall be vested in a President of the United States of America. He shall hold his Office during the Term of four Years, and shall be eligible for Re-election to that Office immediately after he shall have finished his Term, but no Person shall be elected to that Office who was not, when elected, seven Years since born in the United States, or who, when elected, was not, at that Time, seven Years since a Citizen of the United States: And no Person shall be elected President who shall not have attained to the Age of thirty five Years, and been seven Years a Citizen of the United States, and fourteen Years in the Service of the United States, and who shall not, when elected, have his Residence within the United States.
Section 2
The President shall have the Power, by and with the Advice and Consent of the Senate, to make Treaties, provided two thirds of the Senators present concur; and he shall nominate, and by and with the Advice and Consent of the Senate, shall appoint and dismiss Ambassadors, Ministers, Consuls, Judges, and all other Officers of the United States, whose Appointments are in his Power; except such as the Laws may provide shall be appointed by the Congress; and he shall receive such Ambassadors, Ministers, Consuls, and Judges, and other Officers as may be so appointed, and he shall have the Power, by and with the Advice and Consent of the Senate, to grant Reprieves and Pardons for all Offences against the United States, except Treason, Felony, and Breach of the Peace; and he shall have the Power, on Impeachment by the House of Representatives, to remove from Office any Judge, or other Officer of the United States.

Article III
Section 1
The judicial Power shall be vested in one Supreme Court, and in such inferior Courts as the Congress may from Time to Time ordain and establish. The Judges, both of the Supreme and inferior Courts, shall hold their Offices during good Behaviour, and shall, at any Time during their Continuance in Office, receive a Compensation, which shall not be diminished during their Continuance in Office.
Section 2
The judicial Power shall extend to all Cases in Law and Equity, arising under this Constitution, the Laws of the United States, and Treaties made, or which shall be made, under the Authority of the United States; to all Cases affecting Ambassadors, other public Ministers and Consuls; to all Cases of admiralty and maritime Jurisdiction; to Controversies to which the United States shall be a Party; to Controversies between two or more States; between a State and Citizens of another State; between Citizens of different States; between Citizens of the same State claiming Lands under Grants of different States, and between a State and Citizens of the same State claiming Lands under Grants of different States, and between a State and foreign Citizens or Subjects; and to all Cases of Impeachment.

Article IV
Section 1
The Citizens of each State shall be entitled to all Privileges and Immunities of Citizens of the United States.
Section 2
Full Faith and Credit shall be given in each State to the public Acts, Records, and judicial Proceedings of every other State. And the Acts, Records, and judicial Proceedings of every State shall be so regarded in each State as they are in the State in which they were made. No State shall be compelled to send Public Officers into another State, and no Officer of one State shall be obliged to exercise his Functions in another State, except in Cases in which he may be authorized by the Legislature of the State to which he belongs.
Section 3
New States may be admitted by the Congress into this Union; and no new State shall be admitted into this Union without the Consent of the Legislature of the State in which that State shall be situated, as well as of the Congress. The Congress shall have the Power to admit or to reject the Application of any State for Admission into this Union, and to propose Amendments to the Acts of the Legislature of any State, which in their Judgment shall be necessary for the Harmonious Interests of the United States.

done in Convention by the unanimous Consent of the States present, in Testimony whereof, we have hereunto set our Hands and the Seal of the Convention, at Philadelphia, in the City of Pennsylvania, the 17th Day of September, 1787.

Wm. Blount
G. Mifflin
G. Morris
J. M. Smith
J. Wilson
J. Hancock
J. Adams
J. B. C. Lincoln
J. C. Ingham
J. P. Kenyon
J. R. Livingston
J. S. Mathews
J. T. Moore
J. W. Randolph
J. W. W. Wood

Autographs





