

'59

THE WHEEL





WHEELERSBURG HIGH SCHOOL





12

THE ANNUAL STAFF

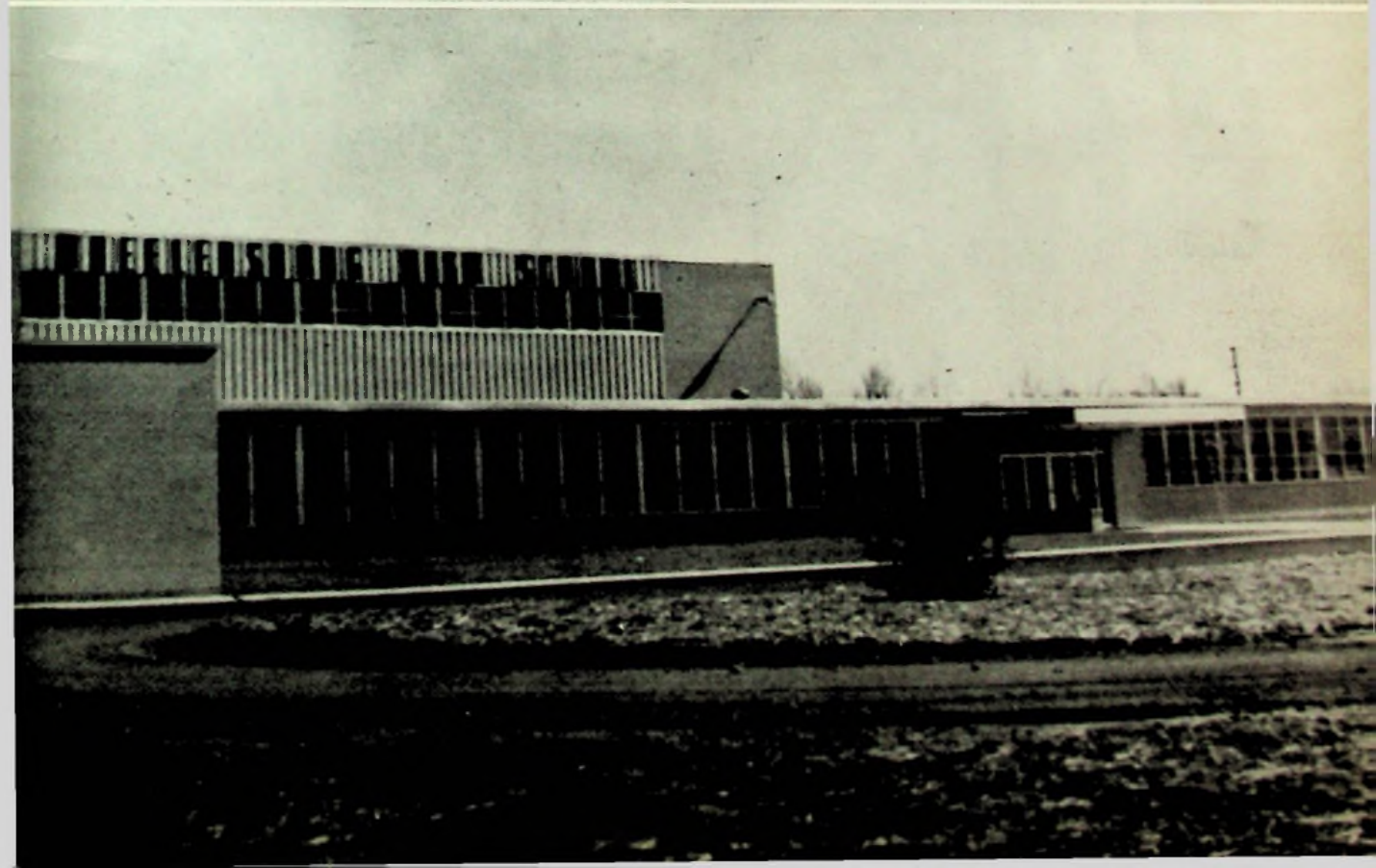
Presents

THE WHEEL

1959

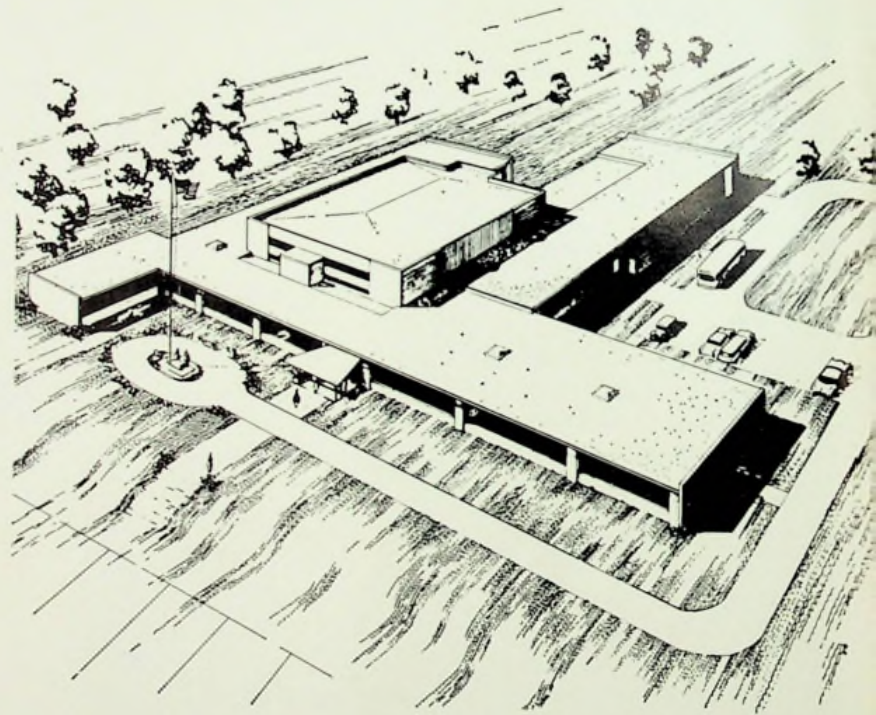
"Our Year of Expansion"

Wheelersburg, Ohio



T

his is the year of...



. . . *EXPANSION*

New School . . .

The new, \$750,000 Wheelersburg High School building, a distinctive and functional landmark in the district's educational progress, is a result of the community's effort to insure the future of their youth. The new building is introduced to you on the color page by the seniors who have spent all twelve years in Wheelersburg schools.

New Classrooms . . .

The most complete high school program ever offered at Wheelersburg will be carried out in the new lecture rooms, the music suite and the complete industrial arts shop. Students will be encouraged to further their interests in science by experimenting in the beautifully equipped science laboratories. Every girl will have the privilege of working in the home economics kitchens which are equipped with the latest editions of refrigerators, freezers, gas or electric ranges, and she will also learn the fine points of sewing, home making, and other domestic arts. The two commercial rooms will be equipped with the modern office machines to prepare each person who chooses the business life.

New Gymnasium . . .

Physical education and training carried on in the spacious new gymnasium and the shiny tiled shower and locker rooms will augment a strong academic program. When basketball season rolls around, 1800 spectators will have an opportunity to enjoy this new arena. It also doubles as an auditorium for the honor assemblies and for the student recreation at the noon hour.

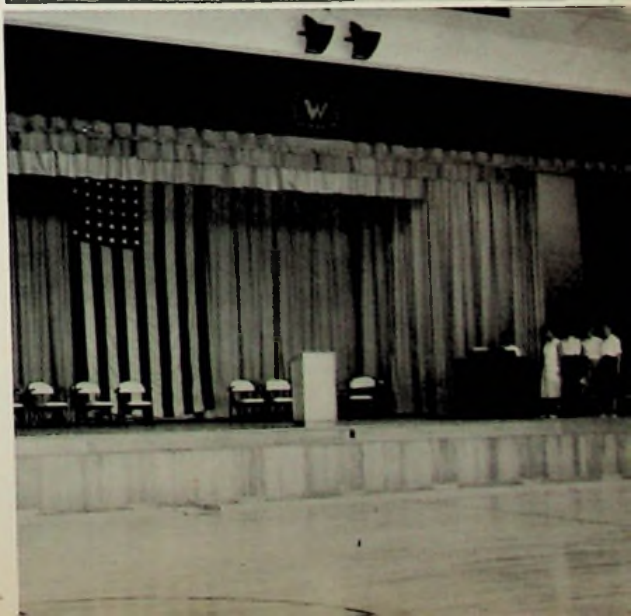
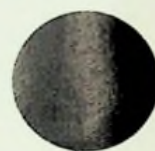




Table of contents

- *administration*
- *seniors*
- *juniors*
- *sophomores*
- *freshmen*
- *organizations*
- *athletics*
- *activities*
- *advertising*





administration



MR. JACOB H. SEE

Local Executive Head of Wheelersburg Schools, received his B. S. degree in Education from Ohio University and his Master's degree from Ohio University Graduate School.



MISS KATHLEEN SKIVER
Secretary, attended the Office Training School in Columbus.



MR. ARTHUR D. PRESTON

Principal, received his B. S. degree from the University of Wilmington and also attended Ohio University and the University of Cincinnati.

MR. EDWARD R. McCOWEN
Scioto County School Superintendent,
received his B. S. degree from North-
western University and has attended
both Otterbein College and Harvard
University.



*Wheelersburg
Board of Education*

MR. THOMAS DECAMP



MR. CARL HERMS



MR. DOW JACKSON



MR. S. A. PURTEE



MR. J. HARPER PRESTON





MR. HUBERT BOOTHE
Biology, Advanced Algebra,
Plane Geometry, General Math.



MR. ELDON BORDERS
English, Sociology, American
History, Government, Business
Law, Biology.



MR. CHARLES BOYD
English, Bookkeeping, Driver
Training.

Faculty

MRS. JO SUE BURKHART
Physical Education, Science,
Health.



MR. DONALD GROH
General Science, Biology, Phys-
ics, Chemistry, Basketball Coach.



MRS. SALLY HARRISON
Latin, French, Librarian.





MR. ANDY HOPKINS
American History, World History, Football Coach.



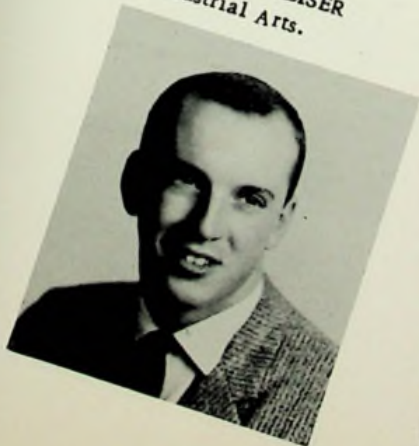
MR. BILL MARSHALL
Shorthand, Typing, Office Practice.



MR. RICHARD MARTIN
Algebra, Reserve Basketball Coach.

Members

MR. TOM REISER
Industrial Arts.



MR. HAROLD MULLINS
Physical Education, Health, Physiology.



MR. JOHN MILLER
Government.





MRS. GERALDINE SCHERER
English, Sociology, Business
Law.



MRS. GRACE SCHINDLER
Home Economics.

MISS LOIS THOMPSON
English, Yearbook Advisor.

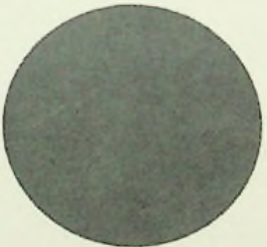


MR. CHARLES VARNEY
Vocal Music.

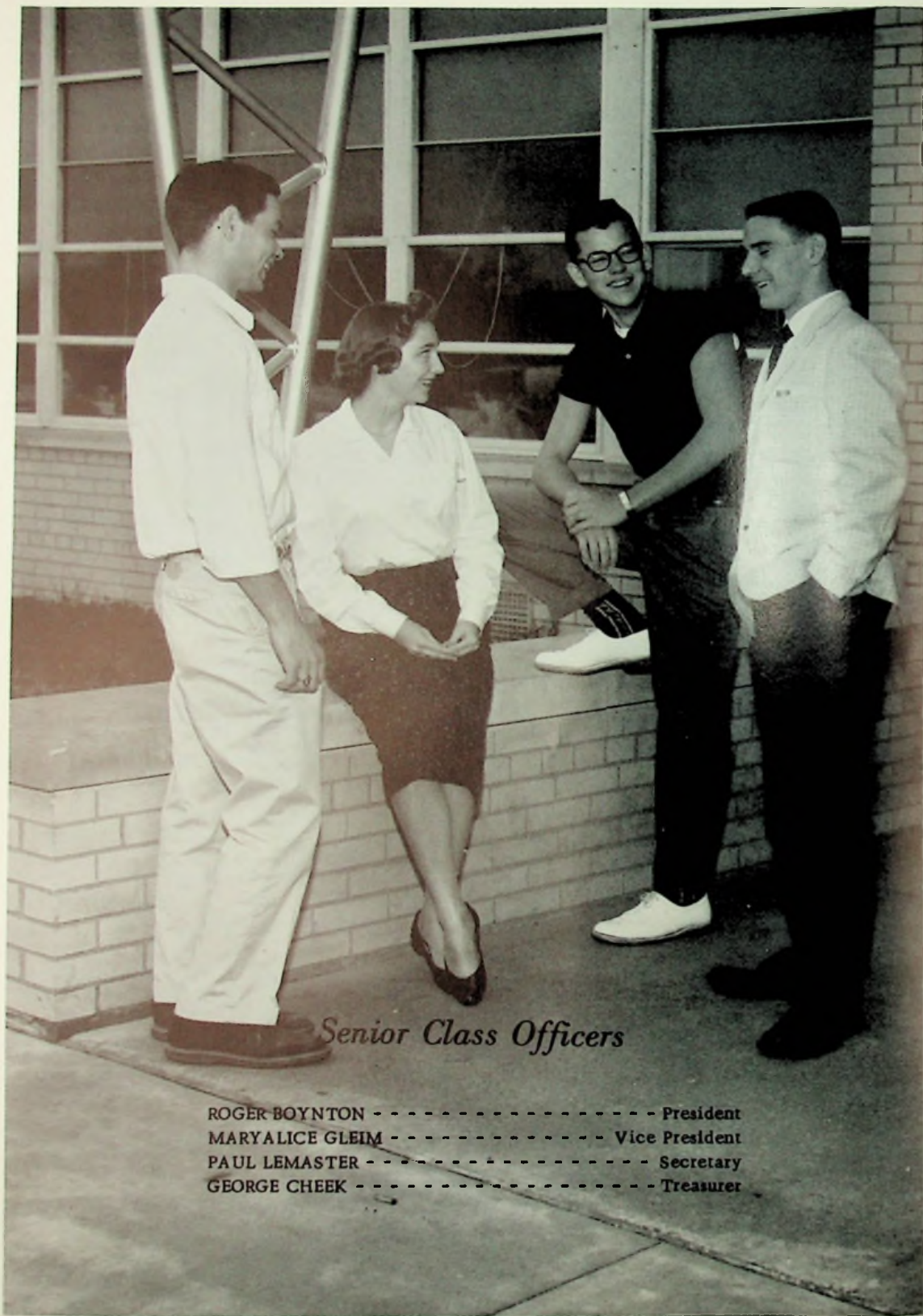


MR. HOWARD WIGET
Band.





seniors



Senior Class Officers

ROGER BOYNTON	-----	President
MARYALICE GLEIM	-----	Vice President
PAUL LEMASTER	-----	Secretary
GEORGE CHEEK	-----	Treasurer

Class History

Our class entered high school in 1954 as one of the largest classes ever to start in at Wheelersburg. During that year we were given the honor of selecting an attendant to both the football and basketball queens. Our choices were: for football, Miss Carol Randall, escorted by Stan Hoskins, and our basketball attendant was Miss Donna Allard and she was escorted by Jhan Aeh. Our Freshman Class Officers were: President, Sharon Bowen; Vice President, Carol Randall; Secretary, Maryalice Gleim; Treasurer, Oleta Hines.

In our second year we were then more adjusted to the do's and don'ts of high school life, and because of this, we were more accepted by the upperclassmen as upperclassmen and not as infantile freshmen.

Our Sophomore Class Officers were: President, Sue Ann Rase; Vice President, Ginger Lodwick; Secretary, Mary K. Miller; and Treasurer, Carolyn McHenry.

We also had a football and basketball attendant to the Queen! Our football attendant was Betty Binion, escorted by John Danner. Miss Binion moved away during our junior year and we lost a respected and well-liked classmate. Our basketball attendant was Miss Christine Bihl and her escort was Miles Zornes.

It was during our sophomore year that we heard of the proposal to build a new high school and that it would be built in time for us to graduate from it. This was an exciting and wonderful thought which helped carry us through our cramped junior year.

We were glad to return from our summer holiday and to greet the oncoming year in the fall of 1958, but things were a bit different this year. The old grade school building of Wheelersburg had been condemned, so we had for company, in our third year of school, scads of running, screaming grade school children. But we did not mind the situation too much, because the new school would be ready for our senior year.

During our junior year we chose officers, as follows: President, Johnny Danner, Vice President, Phil Adams; Secretary, Lana Billups; and Treasurer, Jhan Aeh.

We as juniors had to raise money to sponsor the Prom which was put on at the end of the school year. We had a very nice Prom and Banquet. As in all years, many memories were carried away from the Prom by the seniors. The Prom is always the last social function the senior takes part in while they are in high school.

Our Attendant to the Football Queen was Betty Jo Davis, escorted by Johnny Danner, and our Basketball Attendant was Mary Katherine Miller, escorted by George Cheek.

In our senior year we started in the new school and it was so new and different that most of us did not know our way around in the halls for the first few weeks.

We chose officers in the first week of school, and they were: President, Roger Boynton; Vice President, Maryalice Gleim; Secretary, Paul LeMaster; Treasurer, George Cheek. We, as Seniors, chose a football and basketball queen. Our football queen was Miss Betty Jo Davis, who was escorted by Bob Caldwell. The senior attendant was Miss Lou Evans, and she was escorted by Ed Bays. Our basketball queen, chosen by the players, was Miss Christine Bihl, escorted by the basketball captain, Dick Rase. Her senior attendant was Miss Janice Lawson, escorted by Jhan Aeh.

Graduation came around all too fast for our class of '59, but it was a very happy occasion for us. The exercises took place in the new gym and we had the honor of being the first class to graduate from the new school.

Now that we have completed our school life at Wheelersburg High, we can look back and see many happy experiences, and as we look ahead, we see a bright and wonderful future before us.





Senior



Cutest
CAROL RANDALL
STAN HOSKINS



Wittiest
LOU EVANS
PHIL ADAMS



Best Personality
CHRIS BIHL
JR. DANES



Best Dancers
KAREN CHAMBERLIN
MILES ZORNES



Most Athletic
BECKY DECAMP
DAVE FRALEY



Most Likely to Succeed
SUE ANN RASE
ROGER BOYNTON

Personalities



Class Pest
 MARY KATHRYN MILLER
 PHIL ADAMS



Most Artistic
 CAROL RANDALL
 JR. DANES



Most Musical
 CAROLYN MCHENRY
 GEORGE CHEEK



Most Popular
 BETTY JO DAVIS
 BOB CALDWELL



Most Bashful
 SHIRLEY MORRISON
 DELMAR RATLIFF



Best All Around
 BETTY JO DAVIS
 DOUG KIDD

Class

- I, Phil Adams, will my ability to get along with Chuck Boyd to any Junior who wants to fail Senior English.
- I, Gladys Adkins, will my red hair to Carol Otworth.
- I, Jhan Aeh, will my girlish figure to Claudia Furh.
- I, Donna Allard, do hereby will my nickname "Curly" to Barb Wilson.
- I, Gary Allard, will my shy personality to Bill Bihl.
- I, Ed Bays, do hereby will my ability to play football to Joe Bihl so that he can play like his cousin Cork.
- I, Bill Beasley, will my Brains to Mr. Jacob H. See.
- I, Christine Bihl, will my nickname "Bubbles" to Sharon Chamberlin.
- I, Patty Bocook, will my ability to get along with Mr. Borders to any Junior who wants it.
- I, Roger Boynton, will my ability to get good grades to Gary Claxon.
- I, Ada Brown, do hereby will my nickname "Popscicle" to Carol Wright.
- I, Bob Caldwell, will my height to Larry Burgess.
- I, Karen Chamberlin, will my size 19 waist to Claudia Furh.
- I, George Cheek, will my ability to play halfback to Bill Bihl.
- I, Doris Coche, will my ability to get along with all the teachers to my sister, Betty.
- I, Dona Conley, will my ability to go steady 'til graduation to Nanci Kelly and Sandy Boyle.
- I, Ron Cummins, will my dark hair to Charlie Boyd to keep his head from becoming sunburned.
- I, Don Cunningham, do hereby will my sideburns to Barb Wilson.
- I, Harold Danes, will my middle name to Herman to Murgatroid.
- I, John Danner, will my dark hair to Mr. Reiser who will need it in about five years.
- I, Betty Jo Davis, will my ability to talk without an accent to Mr. Marshall.
- I, Larry Davis, will my ability to "hot rod" to Roger Hall.
- I, Becky DeCamp, will my position as head cheerleader to Sharon Chamberlin.
- I, Ruth Ann Delabar, will my ability to roam the halls to Pudgie Boyer.
- I, Carla Dunham, do hereby will my ability to get along with Mr. Hopkins to Dale Mullins.
- I, Patty Eaton, will my ability to talk all the time in Mr. Miller's government class to Carol Otworth.
- I, Cary Erwin, will the hair I just lost to anyone who wants dead hair.
- I, Gary Erwin, will my seat in government class to Mike Vicars.
- I, Vaden Eubank, will my driver's permit to Major Boyd.
- I, Lou Evans, will my ability to say the wrong thing at the wrong time to Joy Raike.

Will

- I, Darlene Fraley, will my small feet to Joe Bihl.
- I, Dave Fraley, will my nickname of Archie to Cork Bihl.
- I, Mary Alice Gleim, will my ability to lose my contact lenses to anyone who sings at the Junior Senior Banquet.
- I, Garnet Hale, will my ability to get along with Mr. Boyd to Carol Hall.
- I, Janet Hale, will my ability to get along with Mr. Marshall to Mona Willis.
- I, Richard Hall, will my typewriter to Mr. Marshall.
- I, Marilyn Hall, will my front seat in every class to Bob Cole.
- I, Rokie Hatten, will my seat in government class to Nanci Kelly.
- I, Karen Heasley, will my height to Larry Burgess.
- I, Linda Holman, do hereby will my position as majorette to Nanci Kelly.
- I, Stan Hoskins, will my athletic feet to Bill Bihl.
- I, Peggy Jacobs, will my green eyes to any cat that wants them.
- I, Sonny Jordan, will my ancient toupee rack to Mr. Boyd.
- I, Doug Kidd, do hereby will my nickname of MaGoo to Mr. Boyd.
- I, Karen Kiser, will my ability to skip school to Bob Cole.
- I, Janice Lawson, will my bottle of peroxide to Carol Cole.
- I, Paul LeMaster, will my curly hair to Mr. Reiser.
- I, Bruce Logan, will my ability to understand physics to Gary Johnson.
- I, Melvin Loper, will my slim figure to Mrs. Harrison.
- I, Chester Madden, will my ability to sleep in class to Gonnell.
- I, Nancy Maple, will my ability to keep my glasses on to Carol Otworth.
- I, Elaine May, will my marriage to anybody that has courage.
- I, Carolyn McHenry, will my pixie haircut to Carol Wright.
- I, Marilyn Miller, will my good grades in government to any Junior who wants it.
- I, Mary Kathryn Miller, will my pestering ability to Larry Burgess.
- I, Sandy Moore, will my position as secretary to Mr. Hopkins to Dotty Wilder.
- I, Fred Morris, will my seat in social living to Bill Arms.
- I, Harold Morris, will my hair to Major Boyd.
- I, Charlotte Morrison, will my shy personality to Wanda Williams.
- I, Shirley Morrison, will my ability to get out of homework to any lucky person that can get by with it.
- I, Henry Mullins, will my chemistry book back to Mr. Groh.
- I, Irene Music, will my position as president of the Elvis Presley fan club to Betty Coche 'til I return from my trip to Germany.
- I, Betty Neal, will my blond hair to Nanci Kelly.
- I, Pat Newsome, will my nickname of Crow to Steve Miller.



PHILLIP ADAMS

- Phillip -
Class Officer - 3; Football - 2-3-4; Track Team - 3, 4; Class Play - 3; Mixed Chorus - 4; Language Club - 3; President - 3; Senior Scholarship Team.



GLADYS ADKINS

- Gladys -
Pep Club - 3-4; GAA - 4; FHA - 1-2; Sigma Tau Phi - 4; Student Secretary - 4.



JHAN AEH

- Jhan -
Football - 1-3-4; Class Officer - 3; Escort - 1; French Club - 1.



DONNA LOU ALLARD

- Curley -
Attendant - 1; Pep Club - 3-4; Secretary - 3; Diploma Bearer - 3; Class Play - 3; Mixed Chorus 4; Glee Club - 1; Language Club - 1; Sub. Cheerleader - 3.



GARY ALLARD

- Gary -



ED BAYS

- Ed -
Baseball - 1-2-3-4; Basketball - 2-3-4; Escort - 4; Usher - 3.

LORETTA TURVEY

- Loretta -





CHRISTINE BIHL

- Bubbles -
Band - 1; Cheerleader - 4; Mixed Chorus - 3-4; Pep Club - 1-2-3-4; GAA - 3-4; Language Club - 3; Treasurer - 3; Attendant - 2; Library Club - 4; FHA - 1; Basketball Homecoming Queen - 4.

GEORGE H. CHEEK

- George -
Football - 2-3-4; Basketball - 1-4; Baseball - 1-2-3-4; Class Officer - 4; Band - 1-2-3-4; Mixed Chorus 4; Varsity "W" Club - 2-3; Escort - 1-3; All-Ohio Boys' Band - 3-4.



ROGER BOYNTON

- Roger -
French Club - 1; Band - 1-2-3-4; Class Play - 3; Student Council - 4; Class Officer - 4; Language Club - 4; Festival - 2; Scholarship Team - 2; Senior Scholarship.



ROBERT CALDWELL

- Bob -
Lexington High School - 3.



ADA LORAIN BROWN

- Ada -
Band - 1-2-3-4; Sub. Major-ette - 4; GAA - 2-3-4; French Club - 1; Language Club - 2-3-4; Library Club - 4; Scholarship Team - 2-3; Class Play - 3; Festival - 1-2; Pep Band - 2-3-4; Pep Club - 1-2-3; Senior Scholarship Team



PATRICIA BOCOOK

- Patty -
Portsmouth High School - 3.

DORIS JEAN COCHE

- Doris -
Bible Club - 1; FHA - 1.





KAREN CHAMBERLIN

- Karen -
Miss WHS Attendant - 1; Band - 1-2-3-4; Majorette - 3-4; Mixed Chorus - 3-4; Vice President - 3; Secretary - 4; GAA - 3-4; Treasurer - 4; Pep Club - 1-2-3-4; President - 4; FHA - 1; Language Club - 3-4; Sigma Tau Phi - 4; Secretary - 4; Library Club - 4; Student Council - 4; Secretary - 4; Naval Reserve Candidate - 4; Baccalaureate Service - 3; Senior Scholarship Team.



BETTY JO DAVIS

- B. J. -
Greenfield High - 1; Pep Club - 2-3-4; Treasurer - 4; GAA - 4; Bible Club - 3-4; Class Play - 3; Attendant - 3; Football Homecoming Queen - 4; Mixed Chorus - 4; Sigma Tau Phi - 4; President - 4; Library Club 4; Student Council - 4.



HAROLD DANES

- Sponge -
Football - 1-2-3-4; Most Valuable Player Award - 4; Track Team - 3; Mixed Chorus - 4.



JOHN H. DANNER

- Johnny -
Basketball - 1-2-3-4; Mixed Chorus - 4; Class Officer - 3; Escort - 2-3; Language Club - 3; Baseball - 4; Usher - 3; Annual Staff - 4.



CARLA KAY DUNHAM

- Carla -
Band - 1-2-3-4; GAA - 4; Festival - 1-2-3-4; Pep Club - 1-2-3-4; Sigma Tau Phi - 4; Bible Club - 3-4; French Club - 1; Language Club - 2-3; Scholarship Team - 2-3; Library Club - 4; Treasurer - 4.



DONALD CUNNINGHAM

- Don -
Scholarship Team - 3.

RONALD GENE CUMMINS

- Ron -
Language Club - 2; Shop Club - 1-2.





LARRY L. DAVIS

- Larry -

REBECCA ANN DECAMP

- Becky -

Pep Club - 1-2-3-4; GAA - 2-3-4; President - 3; Band - 1; Library Club - 3-4; Language Club - 2-3-4; French Club - 1; Glee Club - 2; Cheerleader - 2-3-4; Captain - 4; Usherette - 3; Sigma Tau Phi - 4; Business Manager - 4; Baccalaureate Service - 2; Student Secretary - 4.



RUTH JOAN DELEBAR

- Ruth Ann -

Band - 1-2-3-4; FHA - 1-2-3-4; Treasurer - 2; Parliamentarian - 3; Library Club - 1-4; Vice President - 4; Pep Club - 1-2-3-4; GAA - 1-2-3-4; Festival - 2; Sigma Tau Phi - 4; Minstrel - 2; Student Secretary - 4; Scholarship Team - 1; Senior Scholarship Team.



PATRICIA LORRAINE EATON

- Patty -

FHA - 1-2-4; Glee Club - 1-2-4; Bible Club - 3-4; Mixed Chorus - 1-4; Sigma Tau Phi - 4; Student Secretary 4.



NEDINA LOU EVANS

- Lou -

Language Club - 2; GAA - 2-3-4; Pep Club - 3-4; Student Secretary - 4; Attendant - 4; French Club - 1; Library Club - 4; Bible Club - 3-4; Sigma Tau Phi - 4; Treasurer - 4.



CARY ERWIN

- Cary -

Library Club - 2-3-4; Mixed Chorus - 4; Usher - 3.

GARY ERWIN

- Gary -

Library Club - 2-3-4.





MARYALICE GLEIM

- Maryalice -
Class Officer - 1-4; Library Club - 1-4; Language Club - 2-3-4; French Club - 1; Pep Club - 1-2; Class Play - 3; Glee Club - 1-2-3-4; Mixed Chorus - 2-3-4; Band - 1; Festival - 1-3-4; Candle-Lighter - 3; Baccalaureate Service - 1-2-3-4; State Music Competition - 2-3; District Music - 2-3-4; Accompanist - 2; Minstrel - 2-3.



DAVID FRALEY

- Archie -
Football - 2-3-4; Manager - 1; Basketball - 1-2-3; All-Star Football Team - 4; Track Team - 3-4; Mixed Chorus - 4.



DARLENE FRALEY

- Darlene -
GAA - 2-3-4; FHA - 1-2-3-4; Office Staff - 4; Library Club - 3; Mixed Chorus - 4; Glee Club - 1-2-3; French Club - 1; Language Club - 2; Usherette - 3; Bible Club - 3.



VADEN EUBANK

- Vaden -



BRUCE FRAZER

- Bruce -
East High - 1-2-3; Football - 4; Basketball - 4.



GARNET HALE

- Garnet -
Sigma Tau Phi - 4; Student Secretary - 4.

JANET HALE

- Janet -
Library Club - 3; Student Secretary - 4; Sigma Tau Phi - 4.





KAREN SUE HEASLEY

- Sue -

Mixed Chorus - 1-3; Glee Club - 1-2; FHA - 1-2-3-4; Officer - 4; Pep Club - 1-2-3-4; GAA - 3-4; Vice President - 4; Newspaper Editor - 4; Sigma Tau Phi - 4; Annual Staff - 4; Senior Scholarship Team; Baccalaureate Service - 1-2-3; Student Council - 4; Scholarship Team - 1-2-3; Language Club - 3-4; Library Club - 4; President - 4.

MARILYN JOYCE HALL

- Marilyn -

FHA - 1-2; Library Club - 3-4; Pep Club - 2.



ROKIE MARIE HATTEN

- Rokie

Band - 1-2-3-4; Pep Club - 3-4; Bible Club - 3-4; Treasurer 4; Festival - 1-4; FHA - 1; Library Club - 4.



LINDA ANITA HOLMAN

- Sleepy -

Band - 1-2-3-4; GAA - 4; Majorette - 1-2-3; Head Majorette - 4; Pep Club - 1-2-3-4; Language Club - 1-2-3-4; Mixed Chorus - 4; Sigma Tau Phi - 4; Senior Scholarship Team; Class Play - 3; Scholarship Team - 1-2; Student Council - 4; Annual Staff - 3-4; Diploma Bearer - 3; Festival - 1-2-3-4.

STANLEY HOSKINS

- Stan -

Football - 2-3-4; Basketball - 1-2-3; Escort - 1; Mixed Chorus - 4.

PAUL RAY LEMASTER

- Paul -

Class Officer 4.



RICHARD HALL

- Rich -





PEGGY ANN JACOBS

- Peggy -

Band - 1; Glee Club - 1-2-3; Mixed Chorus - 4; Language Club - 2-3-4; French Club - 1; Pep Club - 2-3-4; Treasurer - 3; Library Club - 4; Senior Scholarship Team; Festival - 1-3-4; Baccalaureate Service - 1-2-3-4; Scholarship Team - 1.



JANICE KAY LAWSON

- Janice -

Pep Club - 1-2-3-4; Miss WHS Attendant - 2; GAA - 3-4; Sigma Tau Phi - 4; FHA - 1-2-3-4; Officer - 3; Mixed Chorus - 1-2-4; Secretary - 2; Glee Club - 1-2; Class Play - 3; Baccalaureate Service - 1-2-4; Candle-Lighter - 3; Attendant - 4; Senior Scholarship Team.



CLYDE JOHNSON

- Clyde -



HAROLD JORDAN

- Sonny -

French Club - 1-2; Language Club - 3-4; Band - 1; Class Play - 3; Scholarship Team - 1-3; Annual Staff - 4; Senior Scholarship Team.



ROY DOUGLAS KIDD

- Doug -

East High - 1-2.



KAREN LEA KISER

- Karen -

FHA - 1-2; Glee Club - 1-2-3-4; Mixed Chorus - 1-2-3; Pep Club - 1.

BRUCE E. LOGAN

- Bronze -

Football - 1-2-3-4; Basketball - 1; Manager - 2-3; Baseball - 1; Track - 3; Language Club - 2-3.





DORIS ELAINE MILLER

- Elaine -
Office Staff - 3-4; FHA - 1; Pep Club - 1-2.

CAROLYN JUNE McHENRY

- Carolyn -
Band - 1-2-3-4; Mixed Chorus - 1-3-4; Glee Club - 1-2; Language Club - 2-3-4; French Club - 1; Majorette - 3-4; Accompanist - 1-2-3-4; District Music Competition - 2-3-4; State Music Competition - 3-4; Pep Club - 1-2; Class Play - 3; Class Officer - 2; Senior Scholarship Team; Festival - 1-2-3-4.



DELMAR RATLIFF

- Delmar -



NANCY ANN MAPLE

- Nancy -
FHA - 1-2-3; Glee Club - 1-2; Usherette - 3; French Club - 1; Office Staff - 3-4; Pep Club - 1-2.



CHESTER MADDEN

- Chester -



MARILYN YVONNE MILLER

- Marilyn -
Bible Club - 3; FHA - 1.

IRENE MUSIC

- Irene -
Pep Club - 1-2; Glee Club - 1-2; FHA - 1-2; Annual Staff - 4.





MARY KATHRYN MILLER

- Katie -

Band - 1-2-3-4; FHA - 1-2; GAA - 2-3-4; Vice President - 3; Festival - 2-4; Pep Club - 1-2-3-4; Mixed Chorus - 3; Secretary - 3; Library Club - 4; Sigma Tau Phi - 4; Vice President - 4; Scholarship Team - 3; Library Club - 4; Class Officer - 2; Attendant - 3; Language Club - 2-3-4; Class Play - 3; Annual Staff - 2; DAR Test - 4; Senior Scholarship Team.



SANDRA KAY MOORE

- Sandy -

GAA - 2-3-4; Secretary - 3; Library Club - 3; FHA - 1-2-3-4; President - 4; Sigma Tau Phi - 4; Student Council - 4; Student Secretary - 4; Band - 3-4.



WILLIAM HAROLD MORRIS

- Harold -



CURTIS FRED MORRIS

- Mugs -



CHARLOTTE ANN MORRISON

- Charlotte -

FHA - 1-2-3-4; Secretary - 2; Pep Club - 3; Miss WHS Attendant - 3; Student Secretary - 4.



SHIRLEY DARLENE MORRISON

- Shirley -

FHA 1; Pep Club - 2-3.

BETTY RUTH NEAL

- Betty -

FHA - 1-2; Pep Club - 1-2-3-4; Library Club - 3.





CAROL ANN RANDALL

- Carol -
FHA - 1-2; GAA - 2-3-4; Mixed Chorus - 3-4; Treasurer - 4; Annual Staff - 3-4; Editor - 4; Language Club - 1-2-3-4; Student Secretary - 4; Sigma Tau Phi - 4; Library Club - 4; Pep Club - 1-2-3-4; Secretary - 4; Attendant - 1; Student Council - 4; President - 4; Class Officer - 1; Class Play - 3; Language Club Treasurer - 2-3; Senior Scholarship Team; Scholarship Team - 3.



PAT NEWSOM

- Pat -
Football - 2-3-4; Track - 3; Mixed Chorus - 4; Vice President - 4.



HENRY MULLINS

- Henry -



LAOMA ANN PERKINS

- Perk -
FHA - 1-2-4; GAA - 2-3-4; Library Club - 3; Glee Club - 2-4; Mixed Chorus - 4; Sigma Tau Phi - 4; Office Staff - 4; Language Club - 1-2-3; Usherette - 3; Bible Club - 3-4; Scholarship Team - 1-3; Senior Scholarship Team; Student Secretary - 4; Pep Club - 1-2- 3-4.



PHYLLIS JEAN PARKER

- Giggles -
Bible Club - 3-4; Library Club - 4.



JUDY CAROL NICKELL

- Judy -
Glee Club - 1-2-3-4; Mixed Chorus - 3; FHA - 1-2; Pep Club - 2; Glee Club Treasurer - 4; Festival - 3-4.

VIRGINIA CONALEE SALMONS

- Conalee -
Glee Club - 3-4; Mixed Chorus - 3; FHA - 1-2.





JACOB SEE

- Jake -
Language Club - 1-2; Senior Scholarship Team; Visual Education Squad - 1-2-3-4; Scholarship Team - 3.

LINDA KAYE WITTEN

- Linda -
Band - 1-2-3-4; Festival - 1-2; French Club - 1; President - 1; Language Club - 2; GAA - 4; Library Club - 2-4; Secretary - 4; Sigma Tau Phi - 4; Newspaper Assistant Editor - 4; Bible Club - 3-4; Student Secretary - 4; Pep Club - 1-2-3-4; Pep Band - 1-2-3; Scholarship Team - 1-2-3; Senior Scholarship Team.



RICHARD RASE

- Dick -
Green High - 1; Basketball - 2-3-4; Captain - 4; Football - 2-3; Mixed Chorus - 4; President - 4; Annual Staff - 3; Language Club - 3; Student Council - 4; Senior Scholarship Team.



LINDA LOU STANLEY

- Linda -
Coalgrove - 1-2; Language Club - 3-4; Mixed Chorus - 3; Festival - 3; Baccalaureate Service - 3; Senior Scholarship Team.



DARELL TROUT

- Darell -

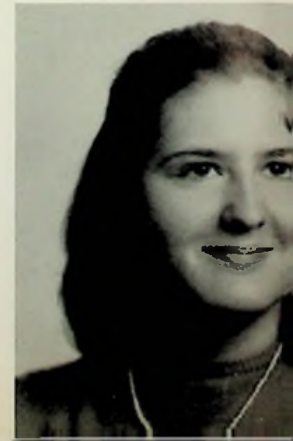


WINONA ELANE SPRY

- Winona -
Bible Club - 4; Library Club - 1-4.

DONNA JEAN TURNER

- Donna -
FHA - 1-2; Bible Club - 4; Library Club - 3; Office Staff - 4.





CAROLYN ELIZABETH WARNER

- Carolyn -
Glee Club - 3; FHA - 1-2-3-4; Secretary - 4; Sigma
Tau Phi - 4; Band - 1-2-3-4; Mixed Chorus - 4; Ma-
jorette - 1-2-3-4; Student Secretary - 4; Office Staff -
3-4.



SUE ANN RASE

- Sue -
FHA - 1-2-3-4; GAA - 1-2-3-4; President - 2-4;
Class Officer - 2; Pep Club - 1-2-3-4; Language Club -
2-3-4; Secretary - 2-3; Sigma Tau Phi - 4; Annual
Staff - 4; DAR Test - 4; Scholarship Team - 3; Li-
brary Club - 4; Baccalaureate Service - 1-2-3-4;
Student Council - 3-4; Vice President - 4; Mixed
Chorus - 1-3-4; Glee Club - 1-2-3-4; Festival - 3-4;
Sub. Cheerleader - 2-3; Class Play - 3; Senior Schol-
arship Team.



MELVIN LOPER

- Melvin -



WILLIAM E. BEASLEY

- Bill -
Baseball - 1-2-3-4; Football -
1-2-3.



MILES ZORNES

- Zornesie -
Coles Junior High - 1; Football -
2-3-4; Varsity "W" Club - 2-3;
Escort - 2-3; Track - 4.



MARY FRANCES WESSEL

- Mary Frances -
FHA - 1-2-3-4; Vice President - 3; Glee Club - 2;
Miss WHS Manager - 3; Sigma Tau Phi - 4; Office
Staff - 2-3-4; Mixed Chorus - 2; Library Club - 1-
2-3.

EDGAR R. TRIPLETT

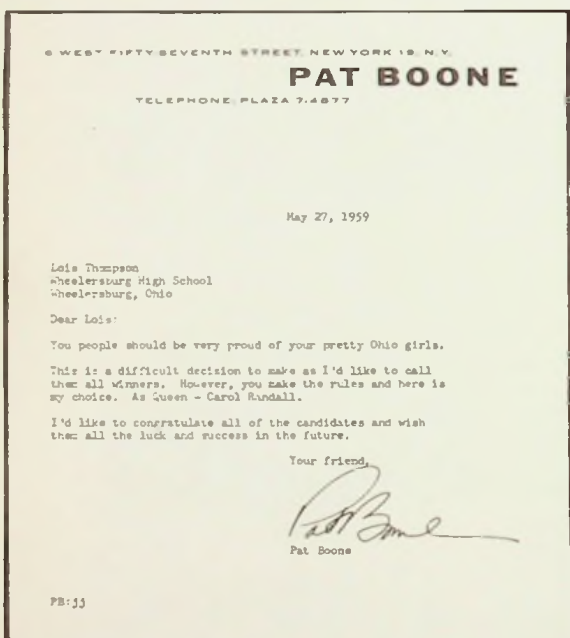
- Ed -





Pat Boone Chooses Queen

The faculty of W. H. S. selected four girls from the junior and senior class on the basis of personality, beauty, intelligence, morals, and congeniality. Their pictures were sent to Pat Boone for him to choose the winner.



QUEEN CAROL RANDALL

KAREN CHAMBERLIN

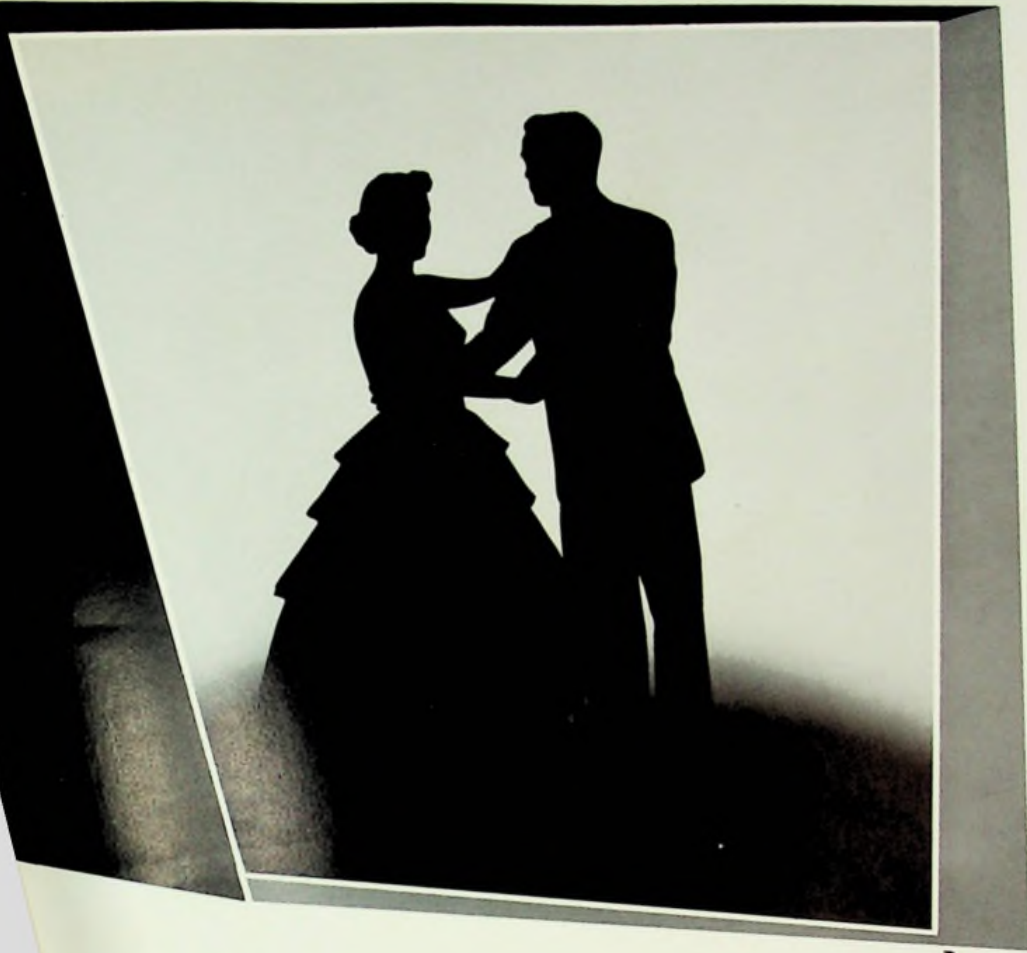


SUE ANN RASE



KAREN NORRIS

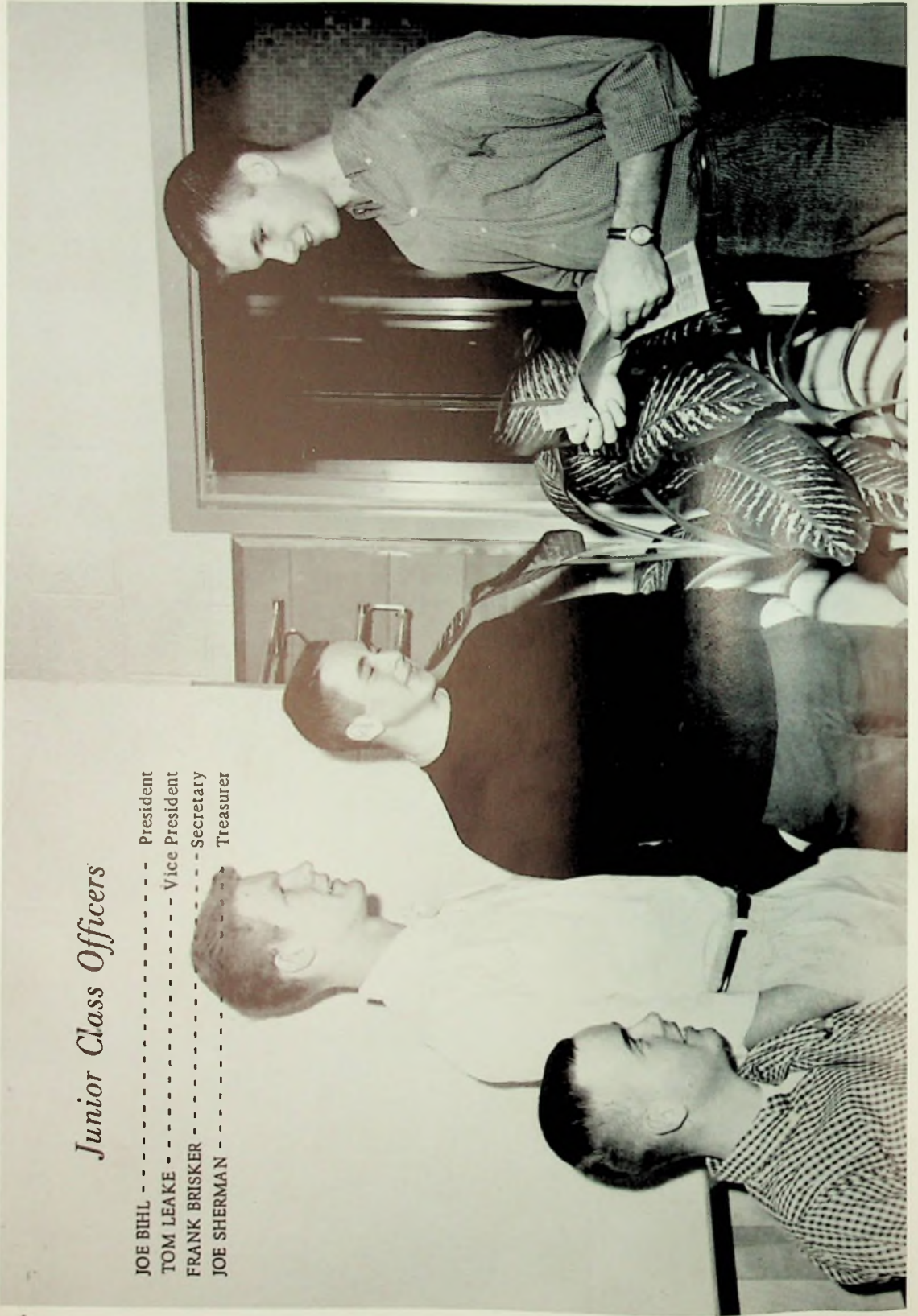




juniors

Junior Class Officers

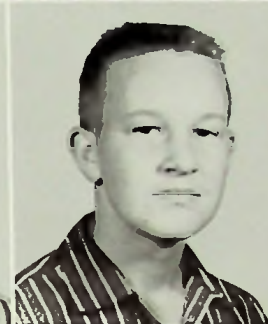
JOE BIHL - - - - - President
TOM LEAKE - - - - - Vice President
FRANK BRISKER - - - - - Secretary
JOE SHERMAN - - - - - Treasurer



ARMS, BILL
BALL, RETHAL
BIHL, BILL
BIHL, JOE



BIHL, JOHN
BLAIR, FRED
BOYER, DAVID
BOYLE, SANDY



BRISKER, FRANK
BURGESS, LARRY
CALDWELL, FRED
CALL, BARBARA



CALL, IRENE
CALL, LINDA
CHAMBERLIN, SHARON
CLARK, WAYNE



COCHE, BETTY
COLE, BOB
COLE, CAROL
CONLEY, NANCY





COOPER, JIM
 COYLE, LINDA
 COYLE, ROBERT
 CRABTREE, ELIZABETH



DYER, BETTY
 EVANS, MYRTLE
 FAIN, LOUELLA
 FRALEY, ROBERT



FUHR, CLAUDIA
 GERLACH, BOB
 GERLACH, PEARL
 GLEIM, RICHARD



GLEIM, SHARON
 GRANT, SANDRA
 GRUTZE, NORMA
 GUNNEL, FRANK

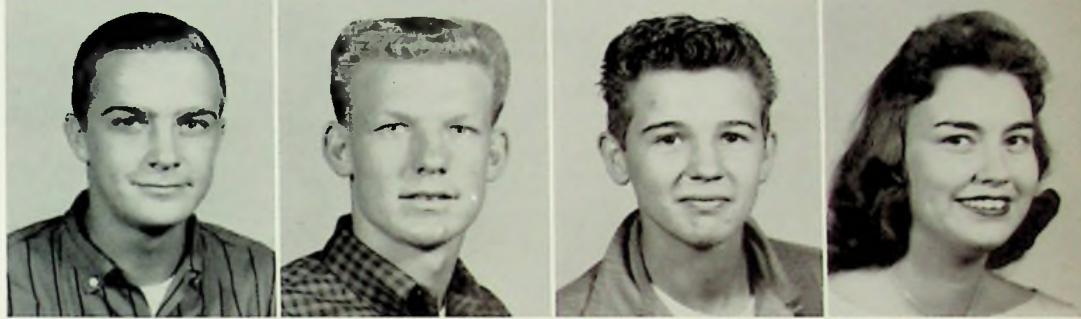


HALL, CAROL
 HATTEN, NOAH
 HINDS, MARY
 HUFFMAN, JIM

JENKINS, JANE
JOHNSON, GARY
KELLEY, NANCI
KITCHEN, SONNIE



KNAPP, KENNETH
LEAKE, TOM
MARCUM, STEVE
MAULT, BIRDIE



MAYS, SHIRLEY
McCANN, SARAJANE
McQUAY, RUTH
MEENACH, DAVID



MILLER, STEVE
MUCHA, MIKE
NELSON, MIKE
NORRIS, KAREN



OTWORTH, CAROL
PARSLEY, MARY
PELFREY, PAUL
PERCELL, SANDY





RAIKE, JOY
RIGSBY, DOUG
SCOTT, GLADYS
SHERMAN, JOE



SNOOK, BETTY
STRICKLAND, JUD
THIEKEN, MIKE
THOMAS, GRETA



TROUT, RAY
TURVEY, RUBY
VICARS, MIKE
WICKER, JIM



WILDER, DOTTY
WILLIAMS, JIM
WILLIAMS, PATTY
WILLIAMS, WANDA



WILLIS, MONA
WILSON, BARBARA
WILSON, KAREN
WRIGHT, CAROL



sophomores

Sophomore Class Officers

JOE OSBORN - - - - - President
GAIL HARRISON - - - - - Vice President
DALE MULLINS - - - - - Secretary
EUGENE BRYANT - - - - - Treasurer



Adams, Paul
Barker, Curtis
Barnett, Sharon
Bays, Bob



Bays, John
Beinkampen, Pete
Bihl, Mary Lou
Billups, Gary



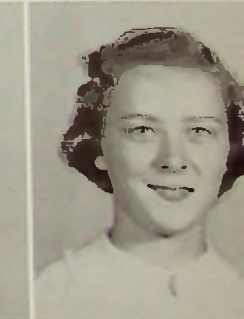
Bobst, David
Brown, Sharon
Burgess, Tom
Carmichael, Gloria



Carter, Joy
Clark, Lavon
Claxon, Wanda
Conn, Joe

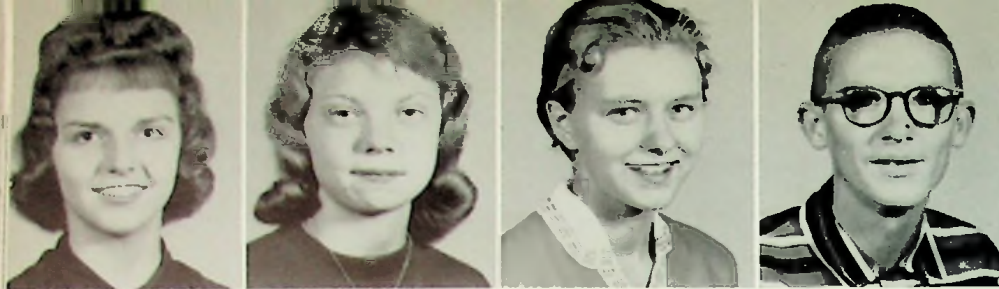


Cooper, Larry
Craft, Willis
Cummins, Jerry
Cunningham, Bonnie



Cunningham, Glenn
Dalton, Linda
Dalton, Robert
Davis, Pat





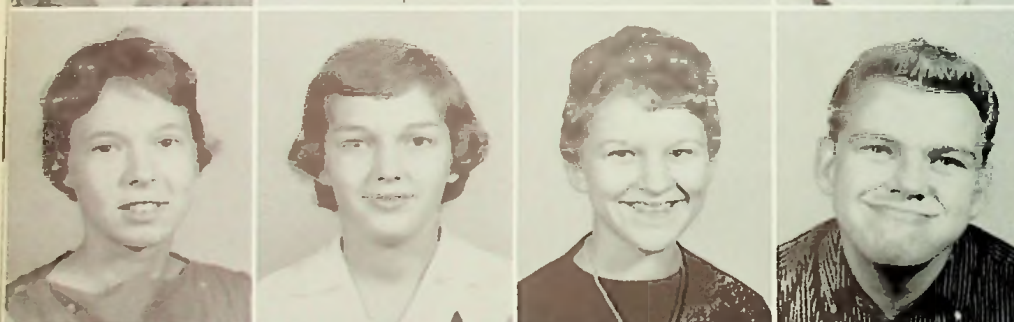
Dean, Rita
Eagleson, Janice
Earwood, Loretta
Eaton, Norman



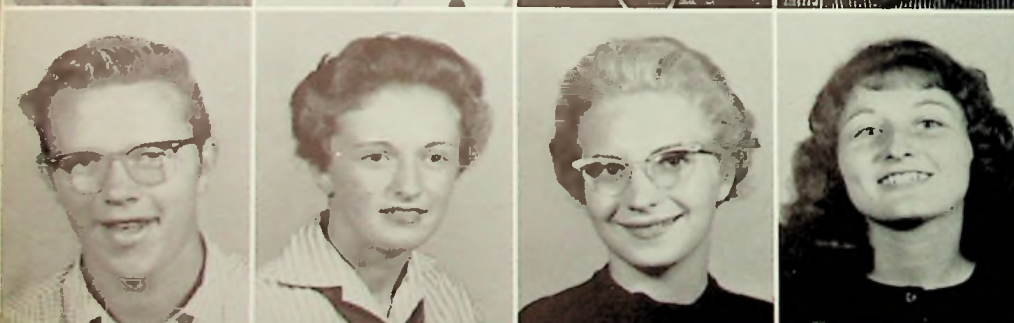
Ervin, Gayle
Gayhart, Sharon
Gerlach, Benny
Gose, Robert



Hacker, Bill
Hacker, Peggy
Hale, Rosalie
Hall, Freelon



Hall, Patty
Harris, Karen
Harrison, Gail
Hoover, Jim

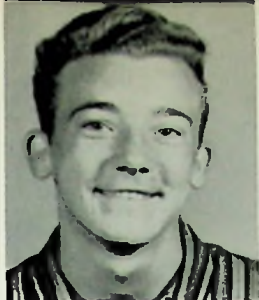


Humble, Mickey
Hunt, Kathleen
Hurst, Dianne
Johnson, Georgian



Johnson, Pauline
Justice, Marcella
Kiser, Bea
Leadingham, Charles

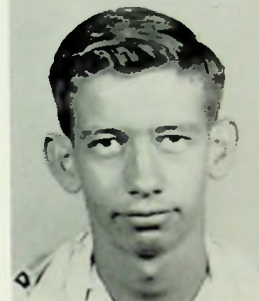
Leadingham, Danny
Lewis, Della
Linkous, Claudia
Linkous, Keith



Linkous, Marcella
Lockhart, Jerry
Lore, Joyce
Lykins, Leroy



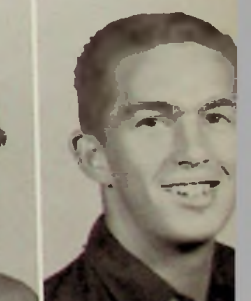
Maple, Roy
Martin, Christine
McGahan, Susie
McGoron, David



Millard, Don
Miller, Bob
Morrison, Marcella
Mullins, Elmer

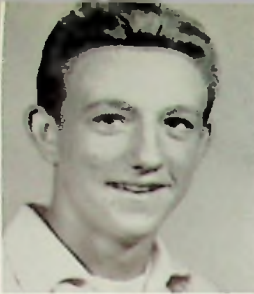


Osborne, Joe
Ottney, Larry
Pace, Joyce
Piguet, Mike



Pitts, Don
Raike, Leroy
Rase, Sheri
Roe, Mike





Rogers, Bernadd
Ruggles, Gale
Russell, Joe
Ruth, Randall



Savage, Dottie
Shelton, Ann
Smith, Jerry
Sommer, Mark



Sprouse, Carolyn
Staker, Becky
Staker, Mary Ellen
Stamper, Lowell



Stockham, Irvin
Thronton, Bonnie
Tolbert, Charles
Tolbert, Clara



Triplett, Harold
Tucker, John
Turner, Karen
Warner, Joyce



Webb, Violet
Williams, Roger
Williams, Sandy
Wolfe, Rita



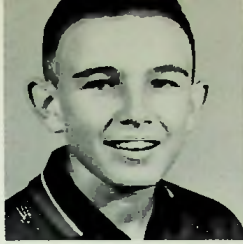
freshmen

Freshman Class Officers

- BOB PACE - - - - - President
- TOM NOBLE - - - - - Vice President
- MARTHA WILLIS - - - - - Secretary
- JANET RASE - - - - - Treasurer



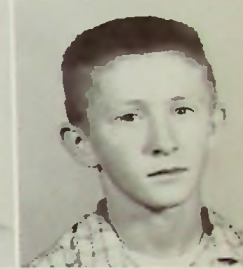
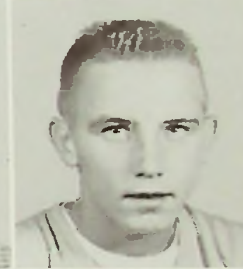
Adkins, Eddie
Arms, Sandy
Barker, Karen
Bates, Bernice



Bates, Bill
Bauer, Jim
Bocook, Marsha
Braden, Nancy



Brisker, Larry
Brown, Floyd
Brown, Mike
Burgess, Phil



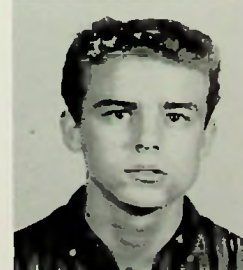
Burns, Ron
Caldwell, James
Caldwell, Janet
Caldwell, Shirley



Carter, Tom
Cheek, Carol
Christian, Doris
Cole, Rennie



Cole, Tandy
Compton, Judy
Conley, Lois
Cooper, Charles



Copley, Peggy
Courtright, Bonnie





Cummins, Gary
Cunningham, Jim
Delabar, Rita
Doseck, Naomi



Dyer, Larry
Evans, Christine
Fannin, Juna
Fraiser, Sue



Green, Bill
Hall, Judy
Haney, Carol
Harris, Frances



Hays, David
Henry, Dianne
Hill, Beverly
Hock, Bill



Holbrook, Mike
Jarvis, Lana
Johnson, Whyoma
Jones, Linda



Knapp, Christine
LeMaster, Eugene
LeMaster, Veron
Litteral, Dave



Lofland, David
Lykins, Karen
Mahoney, Danny
March, Dave

McCoy, Richard
McGahan, Jackie
McHenry, John
McWharter, Bob



Miller, Judy
Miller, Teresa
Moore, Pat
Mullins, Bob



Neal, Beverly
Noble, Tom
Norris, Mike
Ockerman, Carol



Osborne, Gladys
Pace, Bob
Pendry, Gary
Pitts, Elden



Politt, Linda
Price, Doug
Queen, Bobbi
Queen, Don



Ramey, Bob
Ramey, Roger
Rase, Janet
Reeg, Gary



Rensenberger, Doug
Riggs, Dale
Roberts, Larry
Ruggles, Tom





Russell, Jim
Schaffer, Bob
Scott, Herb
Segraves, Janet



Sexton, Phyllis
Smith, Janet
Snook, Darrel
Spradlin, Emmitt



Stewart, Bernice
Stewart, Lacy
Stewart, Sharon
Stevens, Ken



Stiffler, Pat
Thornton, Frank
Tilley, Richard
Tucker, Roger



Turner, Bill
Vicars, Jim
Werline, Mike
Wheeler, Leona



Whitt, Bob
Williams, Judy
Willard, Williams
Willis, Martha



Wright, Roger
Yerian, Connie



organizations



Student Secretaries

Donna Conley, Becky DeCamp, Patty Eaton, Charlotte Morrison, Betty Jo Davis, Laoma Perkins, Janet Hale, Carol Randall, Linda Witten, Carolyn Warner, Garnet Hale, Lou Evans, Ruth Delabar, Sandy Moore, Gladys Adkins, Phyllis Parker.



Office Staff

Donna Turner, Carolyn Warner, Miss Skiver, Laoma Perkins, Juna Fannin, Darlene Fraley, Carol Cheek, Mary Frances Wessel, Elaine Miller.



Science Club

ROW ONE: Tom Noble, Joe See, Billy Turner, John McHenry, Tom Ruggles, Bob Gerlach, Joe Osborne, Dave Litteral, Mike Roe, Bill Green, Bob Pace, Leroy Lykins, Randy Ruth. ROW TWO: Mr. Groh, Sponsor; Kathleen Hunt, Mary Ellen Staker, Teresa Miller, Bonnie Cunningham, Sheri Rase, Sandy Williams, Diane Hurst, Gayle Ervin, Sharon Sterart, Janet Rase, Gail Harrison, Judy Williams, Janet Smith, Karen Wilson, Mrs. Burkhart.



Bible Club

SEATED: Nanci Kelly, Phylis Parker, Miss Skiver, Sponsor; Karen Wilson, Rokie Hatten, Joe Osborne. STANDING: Donna Turner, Patty Eaton, Betty Jo Davis, Winona Spry, Larry Brisker, Laoma Perkins, Carla Dunham, Lou Evans, Diane Hurst.

Library Club



ROW 1: C. Dunham, R. Delabar, K. Heasley, L. Witten, Mrs. Harrison, Sponsor. ROW 2: K. Norris, N. Kelley, J. Jenkins, C. McHenry, G. Harrison, K. Chamberlin, B. J. Davis, B. Wilson, C. Randall, J. Smith, L. Burgess. ROW 3: P. Parker, W. Spry, R. Hatten, J. Warner, B. Staker, S. McCann, M. Morrison, P. Hall, M. E. Staker, S. Boyle, S. Chamberlin. ROW 4: S. Rase, G. Adkins, N. Grutze, B. Dyer, R. Dean, C. Bihl, M. Gleim, M. K. Miller, A. Brown, D. Wilder, J. Eagleson. ROW 5: J. Williams, J. Huffman, B. Gerlach, R. McQuay, M. Nelson, T. Ruggles, C. Erwin, B. DeCamp, P. Jacobs, S. Williams, L. Evans.



Librarians
at work.



Language Club



ROW 1: J. Eagleson, B. Staker, J. Warner, B. Cunningham, Mrs. Harrison, Sponsor. ROW 2: M. E. Staker, K. Chamberlin, C. McHenry, J. Williams, T. Miller, C. Cheek, C. Evans, G. Harrison, D. Hurst, K. Wilson, B. Wilson, C. Randall. ROW 3: J. Fannin, M. K. Miller, M. Gleim, G. Reeg, D. Wilder, K. Turner, A. Brown, S. McCann, N. Conley, W. Claxon, J. Smith, L. Burgess. ROW 4: L. Stanley, S. Williams, C. Wright, G. Ervin, L. Holman, S. Gleim, M. L. Bihl, B. Thornton, S. Rase, T. Noble, R. Delabar, K. Hunt. ROW 5: J. Williams, B. Green, M. Roe, K. Heasley, J. Huffman, R. McQuay, T. Ruggles, R. Boynton, B. DeCamp, S. Jordan, P. Jacobs, S. Miller, S. Rase, P. Gerlach.



Club
visits
state
museum.





Sue Rase, Maryalice Gleim, Assistant Editor; Johnny Danner, Karen Chamberlin, Sonny Jordan.



CAROL
RANDALL
Editor

Yearbook Staff

Linda Holman, Larry Burgess, Gail Harrison, Lois Thompson, Advisor; Barbara Wilson, Jim Williams, Karen Wilson, Karen Heasley. Not pictured, Irene Music.





Pep Club

ROW ONE, left to right: Sharon Brown, Becky DeCamp, Christine Bihl, Carol Cole, Charon Chamberlin. ROW TWO: Karen Chamberlin, President; Sheri Rase, Vice President; Betty Jo Davis, Treasurer; Carol Randall, Secretary; Sarajane McCann, Sharon Gleim, Sue Rase, Norma Grutze. ROW THREE: Rokie Hatten, Lou Evans, Mary K. Miller, Janice Lawson, Gail Harrison, Karen Heasley, Linda Holman, Donna Allard, Darlene Fraley, Laoma Perkins, Barbara Wilson. ROW FOUR: Ruth Delabar, Gladys Adkins, Sandy Moore, Linda Witten, Linda Call, Barbara Call, Irene Call, Teresa Miller, Juna Fannin, Mary Lou Bihl, Ada Brown, Carol Angell. ROW FIVE: Carol Hall, Karen Norris, Sandy Percell, Nancy Conley, Birdie Mault, Karen Lykins, Christine Evans, Lana Jarvis, Nancy Braden, Carla Dunham, Bonnie Thornton, Sandy Williams. ROW SIX: Rita Delabar, Janice Eagleson, Mary Staker, Carol Cheek, Jane Jenkins, Nanci Kelly, Judy Strickland, Becky Staker, Joyce Warner, Carol Wright, Sharon Barnett. Geneva Gleim, Sponsor.



Future *Homemakers* *of America*



ROW ONE, left to right: Kathleen Hunt, Karen Harris, Mrs. Schindler, Karen Heasley, Parliamentarian; Sandy Moore, President; Sandy Williams, Vice President; Carolyn Warner, Secretary; Gail Harrison, Treasurer; Gayle Ervin, Historian. ROW TWO: Lana Jarvis, Judy Williams, Joy Carter, Peggy Hacker, Carol Cheek, Janet Rase, Bobbi Queen, Patty Williams, Charlotte Morrison, Sharon Brown, Carolyn Sproue. ROW THREE: Janice Eagleson, Sheri Rase, Sandy Percell, Karen Norris, Judy Strickland, Jane Ann Jenkins, Nanci Kelly, Dianne Hurst, Marcella Morrison, Sandy Arms, Martha Willis. ROW FOUR: Rita Delabar, Juna Fannin, Bernice Bates, Marsha Bobcook, Dotty Savage, Linda Pollitt, Bea Kiser, Myrtle Evans, Pauline Johnson, Judy Miller, Nancey Braden. ROW FIVE: Sue Rase, Mary Wessel, Mary Lou Bihl, Bonnie Thornton, Patty Moore, Sharon Lemon, Frances Harris, Rita Dean, Patty Eaton, Bonnie Cunningham. ROW SIX: Laoma Perkins, Ruth Delabar, Ruth McQuay, Carol Cole, Sharon Barnett, Naomi Doseck, Carol Haney, Janice Lawson, Pearl Gerlach, Judy Nickell, Shirley Caldwell.

ROW ONE, left to right: Nanci Conley, Marty Willis, Carol Cheek, Jane Jenkins, Treasurer; Karen Heasley, Vice President; Mrs. Burkhardt, Sue Rase, President; Karen Chamberlin, Secretary; Darlene Fraley, Betty Jo Davis, Carol Randall, Rethal Ball. ROW TWO: Janice Eagleson, Becky Staker, Joyce Warner, Mona Willis, Sandy Moore, Ada Brown, Karen Norris, Sheri Rase, Sarajane McCann, Mary Staker, Sandy Boyle, Mary Lou Hines. ROW THREE: Carol Hall, Sharon Gleim, Linda Holman, Sandy Williams, Carol Wright, Mary Lou Bihl, Mary Kathern Miller, Christine Bihl, Bonnie Thornton, Gayle Ervin, Sharon Chamberlin, Carla Dunham. ROW FOUR: Juna Fannin, Laoma Perkins, Ruth Delabar, Becky DeCamp, Linda Witten, Carol Cole, Janice Lawson, Lou Evans, Gladys Adkins, Norma Grutze, Rita Delabar, Teresa Miller.



Girls'

Athletic

Association

REED SECTION

ROW 1: L. Witten, M. Gerlach, J. Warner, B. Staker, B. Wilson, C. Dunham. ROW 2: S. Moore, T. Miller M. K. Miller, M. Evans, M. Linkous, S. McCann, A. Brown, G. Billups.



TRUMPET SECTION

ROW 1: J. Huffman, S. Gleim, N. Conley, M. Werline, N. Grutze, C. Wright. ROW 2: R. Burns, D. Lofland, A. Holmes, K. Wilson, S. Markham.

PERCUSSION SECTION

ROW 1: G. Reeg, M. Brown, J. McHenry. ROW 2: E. Spradlin, J. Cooper, R. Delabar.



BRASS SECTION

ROW 1: P. Gerlach, R. Boyenton, J. Williams, S. Lodwick, R. Hatten. ROW 2: M. Nelson.



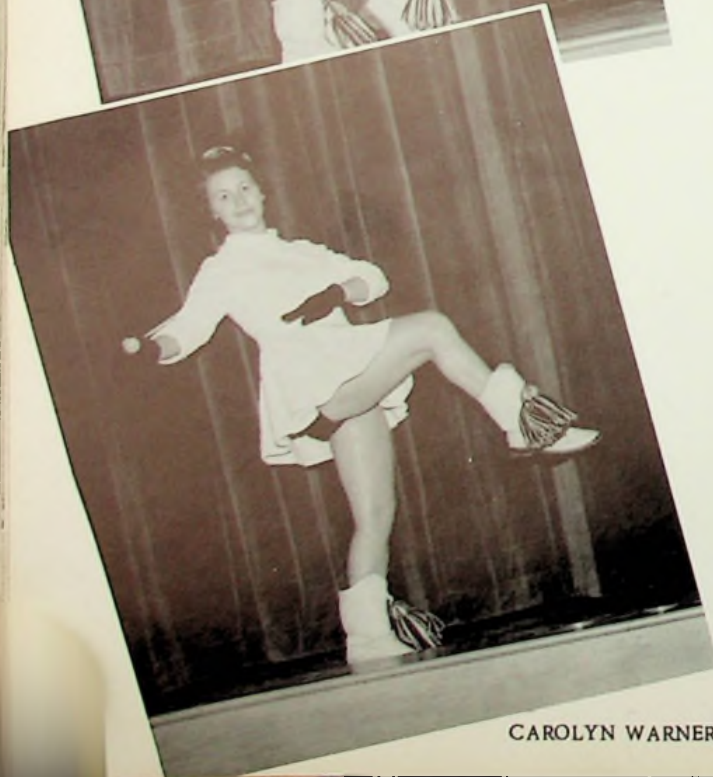
CAROLYN McHENRY



KAREN
CHAMBERLIN



NANCI
KELLY



CAROLYN WARNER



RITA WOLFE

KAY



LINDA HOLMAN
Head Majorette



GARY BILLUPS
Drum Major

Majorettes

Carolyn McHenry, Linda Holman, Rita Wolfe, Karen Chamberlin, Nanci Kelly, Carolyn Warner.





Scholarship Team

ROW ONE, left to right: Kathleen Hunt, Susie McGahan, Mary Ellen Staker, Ruby Turvey, Carol Randall, Teresa Miller, Gayle Ervin, Diane Hurst, Betty Dyer, Carol Cheek, Nancey Conley. ROW TWO: Pearl Gerlach, Sue Rase, Ada Brown, Larry Burgess, Billy Turner, Larry Brisker, Rita Delabar, Jim Huffman, Joe See, Tom Ruggles. ROW THREE: Mr. Jacob See, Roger Boynton, Benny Gerlach, Mike Roe, Bob Gerlach.



National Honor Society

LEFT TO RIGHT: Roger Boynton, Linda Witten, Sue Ann Rase, Maryalice Gleim, Carol Randall, Karen Wilson.



Student Council

Carol Randall, President; Sandy Moore, Sue Rase, Vice President; Karen Chamberlin, Secretary; Roger Boynton, Karen Heasley, Betty Jo Davis, Linda Holman, Larry Brisker, Joe Bihl, Ruth McQuay, Bob Pace, Joe See, Becky Staker, Jane Ann Jenkins, Dick Rase, Joe Osborne, Jim Williams.



Visual Ed

Richard Gleim, Jake See, Joe See.



Mixed Chorus

Mr. Varney, Director. ROW ONE: Carolyn McHenry, Peggy Jacobs, Carolyn Warner, Cary Erwin. Mike Roe, Fred Blair, Laoma Perkins, Sue Ann Rase. ROW TWO: Sandi Boyle, Karen Chamberlin, Betty Jo Davis, Jack Rase, Joe Bihl, Phill Adams, Johnny Danner, Linda Holman. ROW THREE: Christine Bihl, Judy Compton, Janice Lawson, Darlene Fraley, Sharon Chamberlin, Pat Newsom, Tom Leake. ROW FOUR: Carol Randall, Lana Jarvis, Nancy Braden, Stan Hoskins, Dave Fraley, Donna Allard, Patty Eaton. Accompanists: Christine Bihl, Carolyn McHenry.



Glee Club

STANDING: Mr. Varney, Director. ROW ONE: Judy Strickland, Carol Hall, Birdie Maul, Carol Raikie, Conolee Sammons, Barbara Call, Irene Call. ROW TWO: Sheri Rase, Sandy Percell, Betty Lou Shook, Jane Ann Jenkins, Martha Willis, Mary Ellen Staker, Claudia Fuhr. ROW THREE: Karen Kiser, Judy Nickell, Linda Call, Mary Lou Hines, Mona Willis, Karen Norris, Karen Wilson. Accompanists: Mary Ellen Staker, Karen Wilson.



ROW ONE, left to right: Carol Randall, Sandy Moore, Gladys Adkins, Linda Witten, Karen Chamberlin, Betty Jo Davis, Carla Dunham, Linda Holman, Ruth Delabar, Mr. Marshall, Sponsor.
 ROW TWO: Garnet Hale, Janet Hale, Laoma Perkins, Becky DeCamp, Lou Evans, Mary K. Miller, Patty Eaton, Karen Heasley, Sue Ann Rase, Janice Lawson, Phylis Parker.



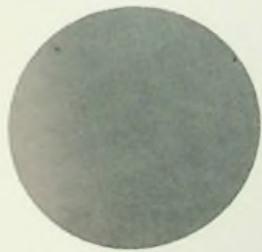
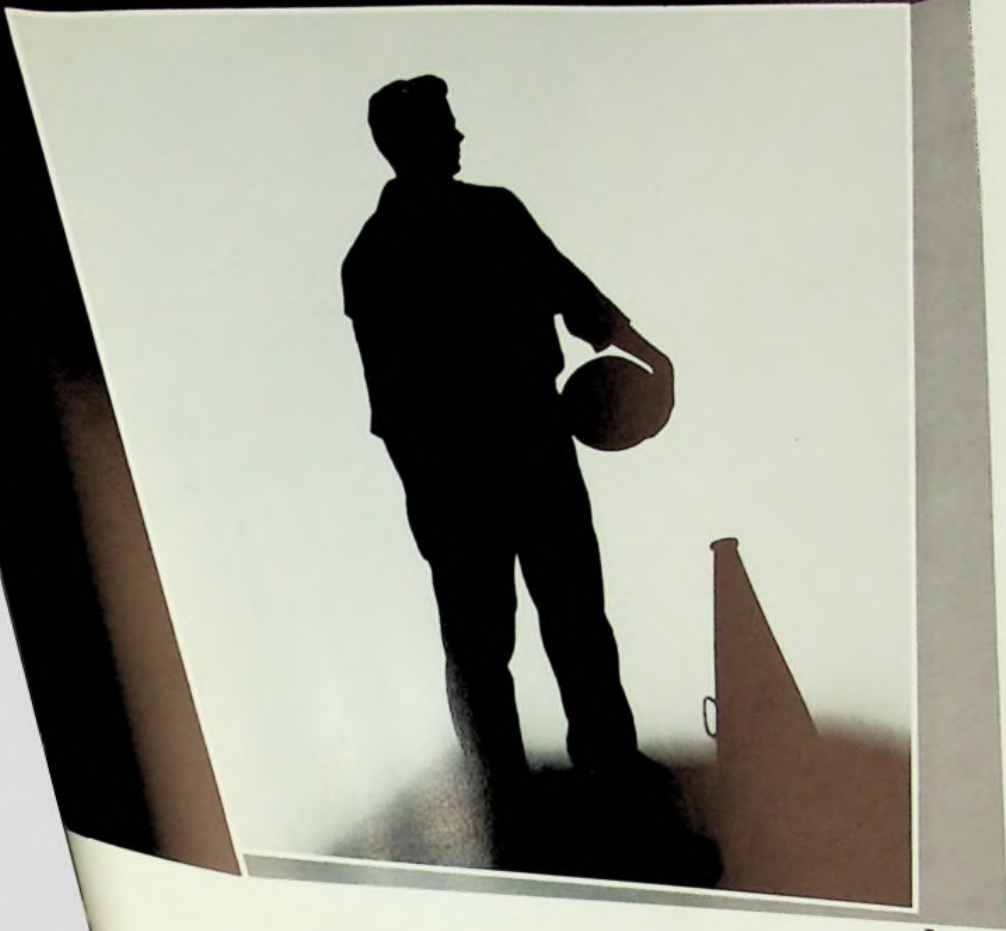
KAREN HEASLEY - Editor



Sigma Tau Pi

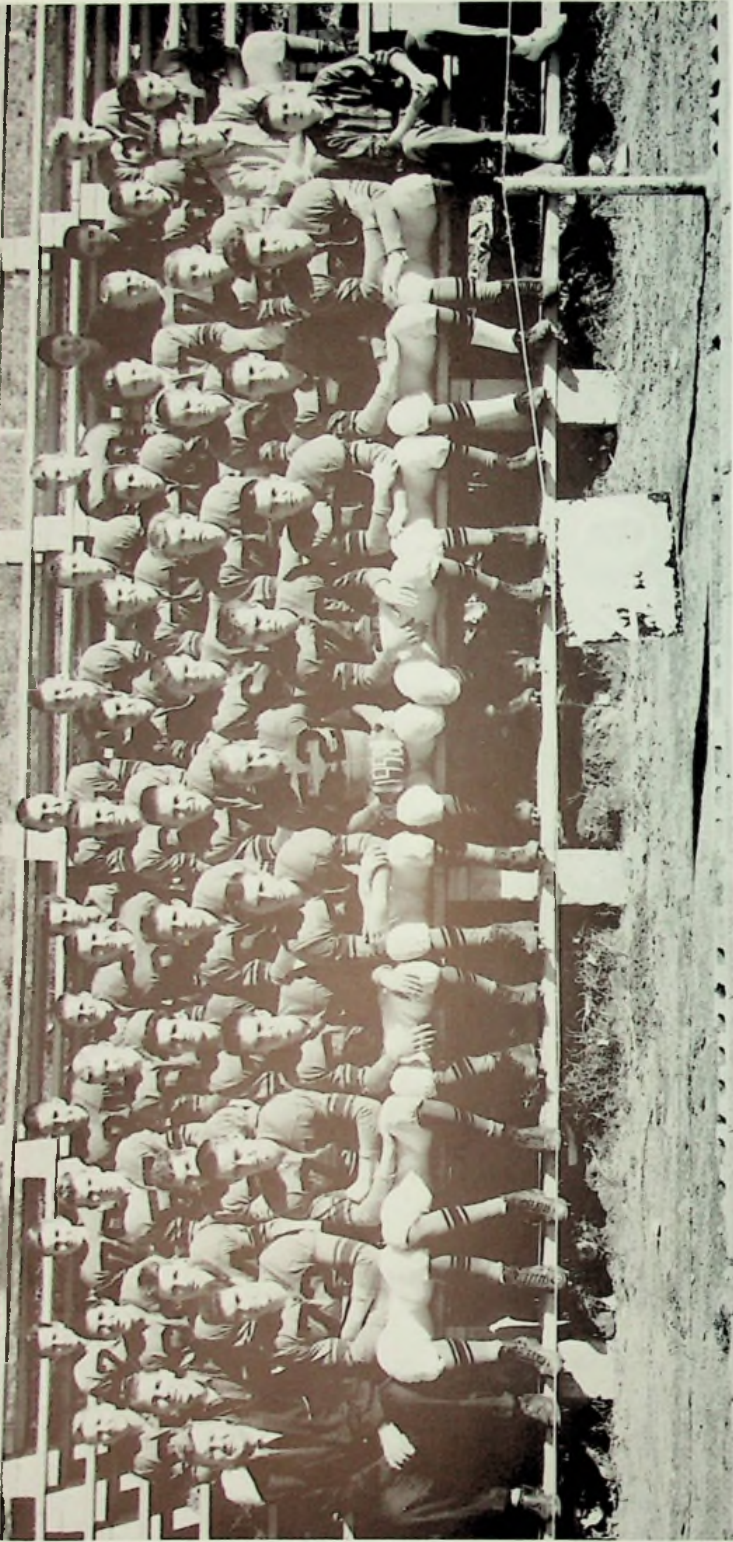
OUR SCHOOL NEWSPAPER STAFF

MR. MARSHALL - Sponsor



athletics

WHEELERSBURG HIGH SCHOOL



'59 Football Team

FIRST ROW, left to right: Mr. Hopkins, Bruce Logan, Pat Newsome, Dave Fraley, Phil Adams, Sponge Danes, Miles Zornes, Stan Hoskins, George Cheek, Bruce Frazier, Larry Burgess. SECOND ROW: David Meenach, Gale Ruggles, Bob Gertlach, Fred Blair, Mike Mucha, Gary Johnson, Bill Bihl, Tom Leake, Dave Boyer, Dale Spradlin, Steve Miller. THIRD ROW: Freeleon Hall, Tom Carter, Ben Gertlach, Dale Mullens, Jerry Smith, Joe Osborne, Mark Sommer, Joe Conn, Bob Miller, Irvin Stockham, Paul Adams, Leroy Lykins, Don Pitts. FOURTH ROW: Rennie Cole, Ed Adkins, Frank Thornton, Roger Wright, Tandy Cole, Jim Cunningham, Dave Litteral, John McHenry, David March, Jim Vicars, Floyd Brown, Bill Green.





Coaches

Mr. Andy Hopkins

Mr. Harold Mullins
ASSISTANT



MANAGERS: Steve Miller, Larry Burgess, and Dave Meenach.
Go, Team, Go!





MILES ZERNES
End



BRUCE FRAZIER
Tackle

'59



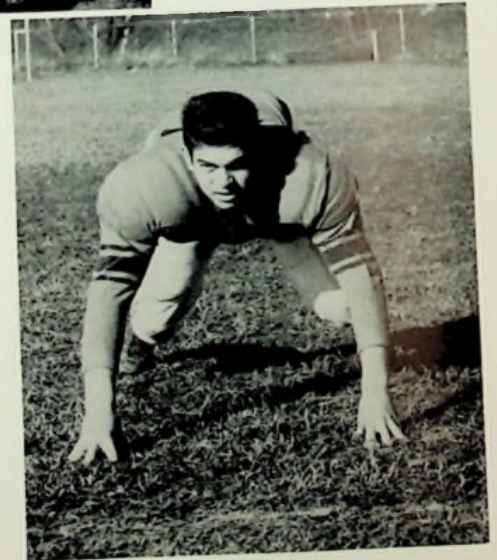
PAT NEWSOME
Center

Senior

BRUCE LOGAN
Guard



DAVE
FRALEY
Quarterback





PHIL ADAMS
End



GEORGE CHEEK
Halfback

Football



SPONGE DANES
Most Valuable Player
End

Squad

BILL BIHL
Captain - Junior
Guard



STAN
HOSKINS
Halfback



row



59
FOOTBALL QUEEN
Betty Jo Davis

Football Homecoming Attendants

Junior Attendant
MISS RETHAL BALL
Escort, WAYNE CLARK



Senior Attendant
MISS LOU EVANS
Escort, ED BAYS



Freshman Attendant
MISS SANDY ARMES
Escort, MIKE NORRIS



Sophomore Attendant
MISS MARY LOU BIHL
Escort, TERRY MARSH





Her Majesty the Queen, BETTY JO



Moments to remember



Their moment of glory



Homecoming

Snaps



FOOTBALL SCORES

We		They
6	Notre Dame	26
8	New Boston	24
6	Ports. East	0
2	Rock Hill	36
12	Chesapeake	8
0	Ports. West	6
6	Fairland	32
0	Waverly	34
16	Piketon	28
6	Coal Grove	26





FOOTBALL: Sharon Chamberlin, Carol Cole, Christine Bihl, Becky DeCamp, Sharon Brown.



Cheerleaders



BASKETBALL:
 Sharon Chamberlin
 Sandy Boyle
 Becky DeCamp
 Bonnie Thornton
 (substitute)
 Sharon Brown
 NOT PICTURED:
 Christine Bihl



Varsity Basketball Team



Left to right; George Cheek, Dale Spradlin, Ed Bays, John Danner, Mike Mucha, Gary Johnson, Joe Bihl, Dick Rase, Steve Miller, Bob Bays, Bruce Frazier, Mr. Groh, Coach.

Managers:

LARRY BURGESS
DAVE BOYER
GARY REEG



The Seniors



BRUCE FRAZIER



Coach
DON GROH



JOHN DANNER



ED BAYS



DICK RASE
Captain



GEORGE CHEEK



One of the many games played in our new gym.
Put it in, Dick!

Reserve Players

Not in order: Pete Bienkampen, James Cunningham, Mike Norris, Dale Mullins, Joe Osborne, Roy Maple, Gale Ruggles, Larry Cooper, Larry Dyer, Paul Adams, Freeland Hall, Gary Billups, Coach, Dick Martin.

VARSAITY SCORES

	We	They
Waverly	55	57
Glenwood	40	75
Minford	59	63
Webster	55	65
Green	51	50
Lucasville	62	69
Notre Dame	68	71
Glenwood	57	71
Waverly	50	56
Piketon	59	61
Webster	57	46
Green	54	55
Minford	41	34
Notre Dame	48	61
West	56	50
Piketon	50	35
Lucasville	62	72
West	53	49







'59 BASKETBALL
QUEEN
*Christine
Bihl*

Basketball Homecoming Attendants

Senior Attendant
MISS JANICE LAWSON
Escort, JHAN AEH



Junior Attendant
MISS JUDY STRICKLAND
Escort, FRED BLAIR

Sophomore Attendant
MISS SANDY WILLIAMS
Escort, MARK SOMMERS



Freshman Attendant
MISS BERNICE STEWART
Escort, BOB MULLINS





Meet our lovely Queen, CHRISTINE.

Captain Dick and the Queen.

Homecoming Snapshots



Get that ball, Dick!



The presentation of the roses
by Captain Dick.

The Queen's Court





ROW 1: Jim Cunningham, Joe Osborne, Bob Bays, Bill Beasley, Mark Sommer, Dale Spradlin, Galen Gleim. ROW 2: Roy Maple, Bob Miller, Bob Mullins, Freelon Hall, Steve Miller, Manager; Mr. Mullins, Coach.

Baseball Team



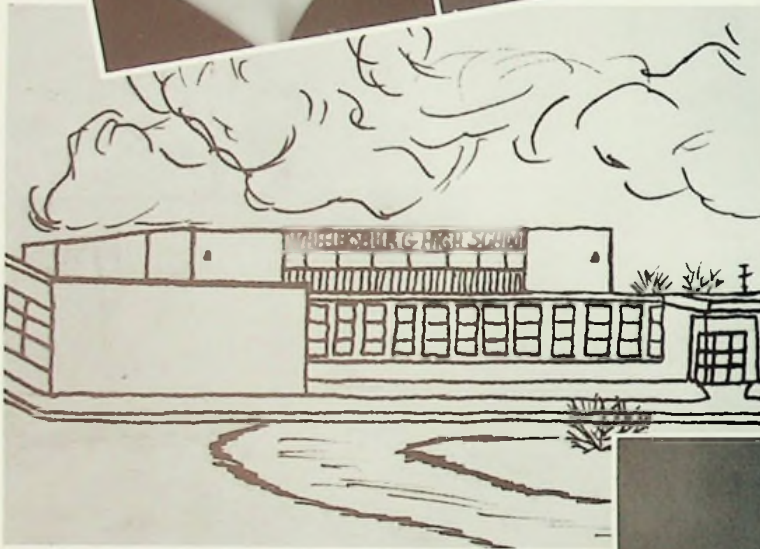


Track Team

ROW 1: Bob Dalton, Jerry Smith, Tandy Cole, Dave Litteral, Rennie Cole, Frank Thornton, Joe Conn, Dale Mullins, Ed Bays, Bill Green, David McGoron. ROW 2: Mr. Hopkins, Coach; Gary Billups, Joe Bihl, Miles Zornes, Galen Blair, Floyd Brown, Don Queen, Norman Eaton, Phil Adams, Bruce Logan, Bill Bihl, Fred Blair.



Miss W.H.S. Contest



ATTENDANTS

Miss Rokie Hatten, Senior

Miss Nanci Kelly, Junior

Miss Phyllis Sexton, Freshman

Miss Wheelersburg High School

SHERI RASE
Sophomore

The contest is conducted by the Junior Class to raise funds for the annual Junior-Senior Prom. There were eight contestants competing for the honor of being Miss W. H. S. Sheri Rase received the most votes from the student body. She was crowned on the night of the Junior class play.





activities

"58"
September October "59"
November



The year begins with familiar faces.



First day - first assignment!



Will they win?



"Liquid Air"



Some eat



Some dance

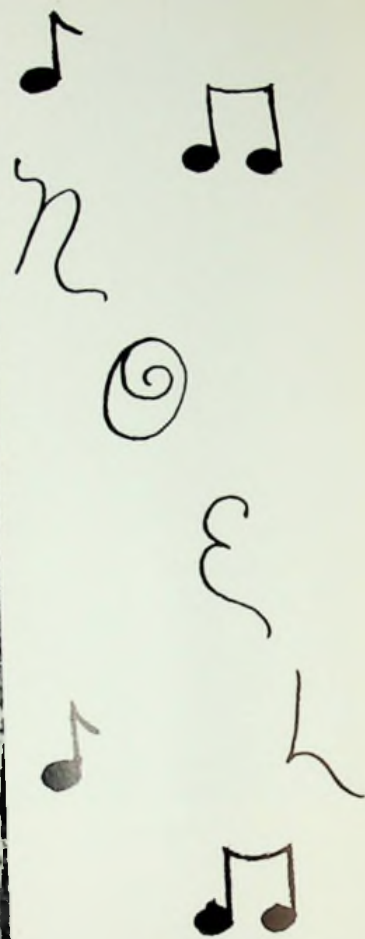
Lunch Time!

Some study





Student Council decorated the tree - Watch the ladder, Dick!



Karen Wilson painted a lovely mural.



*Christmas
Concert*





Centipede???



January



I just don't understand!
SCIENCE FAIR

DISTRICT WINNERS



ROW 1: Sandy Williams, Kathleen Hunt,
Dianne Hurst, Carol Angell. ROW II: John
McHenry, Mike Werline, Joe Osborne.



MUSIC COMPETITION
Billy Turner, Carolyn McHenry, State; Mary-
alice Gleim, State; Karen Wilson.



It takes a woman's touch!

February



That's a fine job, Dave!



OUR BUS DRIVERS



OUR COOKS

Not pictured, Janitors. James Young, Cornell Fritz, R. J. Lemaster, James Bennett.



"CUPID IN PIGTAILS"
Junior Class Play

ROW 1: Jane Jenkins, Barbara Wilson, Jim Huffman. ROW 2: Mona Willis, David Meenach, Larry Burgess, Betty Dyer, Fred Blair, Karen Norris. ROW 3: Tom Leake, Sharon Gleim, Joy Ratke, Frank Brisker, Sarajane McCann, Jim Williams, Mr. Tom Reiser, Director.

NO BRIDE FOR THE GROOM
Senior Class Play

ROW 1: Janice Lawson, Phil Adams, Maryalice Gleim, Dick Rase, ROW 2: Mr. John Miller, Director; Betty Jo Davis, Nancy Maple, Laoma Perkins, Roger Boynton, George Cheek, Sue Ann Rase, Darlene Fraley, Mary K. Miller, Karen Hasley, Student Director.





"Stairway to





the Stars”





Frankly, Dick, I'm bored!



Watch the feet! Watch the feet!



Bring on the food!

The Senior's last dance.



75th

Annual Commencement

OF

WHEELERSBURG HIGH SCHOOL

1885-1959

Thursday, May 14, 1959

Eight O'Clock

NEW AUDITORIUM



We leave you with this thought...

"You have each been given a bag of tools,

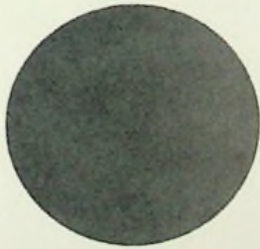
A formless rock and a book of rules;

And each must make, ere life has flown,

A stumbling-block or a stepping-stone."

The '59 Annual Staff





advertisers

Carol Randall

George Cheek

Sonny Jordan

Rinda Holman

Woods

Karen Chamberlin

Roger Boynton

Donna Allard

Christine Bihl

Starr ~~Hookins~~

Bruce Frasier

Nancy Maple

John Joe

Larry Davis

Gene Marie

Laoma Perkins

Sue Ann Rose

Louise Turner

Henry Mullins

Mary Frances

Charlotte Morrison

Mary Kathryn Miller

Doris Coche

Betty Baccock

Dorlene Thaly

Carla Dunham

Delmar Ratliff

Gary Allard

Marilyn Miller

Darrell Trent

Peggy Jacobs
Janet Hale

(Tom)

Betty Jo Davis

Carolyn Warner

Shirley Atkins

Patty

Ed RAYS

THAN HERT

Vacher A. Eulank

Clyde Johnson

Shirley Morrison

Becky De Camp
Janet Hale

Loren Heasley

Roxie Gatten

Phyllis Parker

LONG AND CO.

729 - 733 Sixth Street

Portsmouth, Ohio

Elmwood 3-2025

Compliments of

GRAF LUMBER COMPANY

Bahner Road

Sciotoville, Ohio

A FRIEND

**SANDS
SPORTING GOODS**

STORE

Portsmouth, Ohio

Compliments of
NEWBERRY BROTHERS

New Boston, Ohio
4132 Gallia St.

Phone Bos. 38

Portsmouth, Ohio
816 Gallia St.

Phone EL 3-0644

COMPLIMENTS OF:

Kopy Kat
McClain Cleaners
Pittsburg Plate Glass
Vandervort's
House of Fashion
Essman's Lunch
Rural Natural Gas Co.
Dr. Tomb's
American Restaurant
West End Furniture
Cunningham Hardware
Dr. Duvendeck
Dehner Department Store
A Friend



Compliments of:

MONTGOMERY WARD

Chillicothe Street
Portsmouth, Ohio

BROCK FUNERAL HOME

Gallia at Hayport Road
Scioto 324

GLENN W. BROCK
Licensed Director

Compliments of:
HOSKINS MARKET

Home Killed Meats
Quality Groceries
Quick and Efficient Self-Service

Phone Scioto 982-R

Wheelersburg, Ohio

DENTON M. HAROLD

4206 Red Bud Lane

Charleston, West Virginia

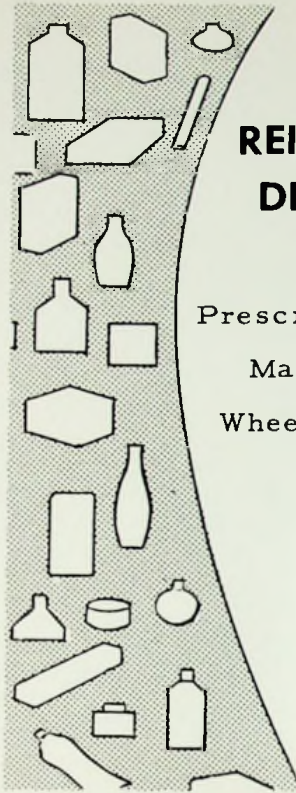


For **GOOD FOOD**
try

**POP AND CLIFF'S
RESTAURANT**



WILLIAMS AND WHITTON
Route 52
Wheelersburg, Ohio



**REIDENBACH'S
DRUG STORE**

Prescription Druggist
Masonic Temple
Wheelersburg, Ohio



Compliments of

**LITTERALS
FOOD MARKET**

Wheelersburg
Ohio

Martin's

"One of Ohio's Good Stores"

CONGRATULATES
AND
COMPLIMENTS
the
GRADUATING
CLASS of '59

**YOU CAN
COUNT
ON US**



QUALITY



SERVICE



DEPENDABILITY



KOCH HARDWARE



**IS OUR
FIRST
THOUGHT**

**MILLHUFF'S
DEPARTMENT STORE**

AND SUPER MARKET

Sciotoville, Ohio

INSURE WISELY

**SHERMAN
AND
RIFFE**

**INSURANCE
AGENCY**

Fire, Auto, and
General Liability



**SHERMAN HIBBITS
& SON
DEPARTMENT STORE**

212 Harding Ave.

Sciotoville, Ohio

Phone 36-G

WILLIAMS BAKERY

Home Baked Pastries
Fresh Daily

Phone Scioto 116-R

435 Center Street
Wheelersburg, Ohio

WHEELERSBURG SOHIO

SERVICECENTER

THEO. PIERRON

Wheelersburg, Ohio

RASE'S MEAT MARKET

Staple Groceries

Self-Service

Phone Scioto 963-Y

Wheelersburg, Ohio

Compliments of

GEMPERLINES

FURNITURE

"Six Large Floors of Quality
Furniture"

612-16 Second Street
Portsmouth, Ohio

FLORAL HILLS

MEMORY GARDENS

Franklin Furnace, Ohio

Scioto 1139-K

"I Am the Resurrection and
the Life"

RAMEY'S FEED STORE

Wheelersburg, Ohio

Phone Scioto 233-L

ROCKWELL FLORAL SHOP

Wheelersburg, Ohio

Best Wishes

HAMMON'S BARBER SHOP

Gallia and Bahner Rd.

Sciotoville, Ohio

Best Wishes to the Class
of '59

From
CARRS JEWELRY STORE

811 Gallia Street
Portsmouth, Ohio
Phone El 3-4480

YE OLD TAVERN

CANDY SHOP
"Candy for the Kiddies"



CARL H. HERMS
Prop.

**COAST-TO-COAST
STORES**

Live Better for Less
THE
KROGER SUPERMARKET

1005 Fourth Street
Portsmouth, Ohio
BOB WITHERS, Manager

BURCHAM

School Institutional Supplies
and Equipment

1122 Findly Street
Portsmouth, Ohio

WHEELERSBURG

DRY CLEANERS

Quality Service
Phone Scioto 1014-X
Wheelersburg, Ohio



LENA KIDD

REAL ESTATE BROKER
7026 Ohio River Rd.
on U. S. 52
We Buy - Sell and Trade
Phone Scioto 209-J



COCA-COLA CO.

Portsmouth, Ohio

WILHELM JEWELERS

507 Chillicothe Street
Portsmouth, Ohio

Compliments of
DOCTOR McCANN

Compliments of
NELSON WILLIAMS
INSURANCE AGENCY
Representing
MOTORISTS MUTUAL INSURANCE
CO.
3965 Gallia Street
New Boston, Ohio
Phone Bos. 165 Home 141-m

MORGAN BROTHERS
JEWELERS

Diamonds - Watches and
Repairing
734 5th St.
Portsmouth, Ohio

WHEELERSBURG TV

SALES & SERVICES
Household Appliances for Services

Phone 51-L

J. W. STIR CO.

Floor and Wall Covering
Portsmouth, Ohio
514 - 516 Second St.
EL-4-1290

Save for Your Future
at
THE CITIZENS
SAVINGS & LOAN ASS'N CO.
505 Chillicothe St.
Scioto County's Oldest and Largest
Savings Institution
Established 1891

. Diamonds
. Watches
. Luggage
B & B COMPANY

837 Gallia St.
Portsmouth, Ohio

Better Values

WOLFF

Clothes for Men
and Boys



HARRISON
FUNERAL HOME

Ambulance - Oxygen Equipment

Scioto 270 Wheelersburg, Ohio

BOURGHOLTZER'S

DRUG STORE
225 Harding Ave.
Sciotoville, Ohio

Phone Scioto 294



Compliments of

GRAF LUMBER COMPANY

Bahner Road

Sciotoville, Ohio

RICHARDS NEWS

Hallmark Cards - Schraffts
Candies

1328 Gallia

Portsmouth, Ohio

Congratulations to the Class
of '59

THE
STANDARD SUPPLY CO.

Findley Street

Portsmouth, Ohio

EVELYN'S BEAUTY SHOP

Old 52

Wheelersburg, Ohio

"2 Hair Stylists"



WHEELERSBURG

LUMBER STORE
Wheelersburg, Ohio

J & R POULTRY

Sciotoville, Ohio

Route 4

Phone 1064-X

Compliments of

**MODERNIZED
REFRIGERATION**

1809 Eleventh Street

Portsmouth, Ohio

Compliments of

KOBACKERS

405 Chillicothe Street

Portsmouth, Ohio

Wheelersburg, Ohio

Phone Scioto 233-G

FREE DELIVERY

**WHEELERSBURG
COAL AND FEED**

Phone Scioto 85

Purina Chows, Seeds
and Fertilizers

**McCARTY
FOOD MARKET**

"Choice Home Killed Meats"



■
**DEEMER'S
SUPERMARKET**

- . Groceries
- . Meats
- . Produce
- . Frozen Foods

Sciotoville, Ohio
State Route 52



THAT

Luxury

LOOK

**ATLAS
FASHION**

Portsmouth
Ohio

Courtesy of

BETSY ROSS

BREAD - CAKES - PIES

Compliments of

**L. G. BALFOUR
COMPANY**

Graduation
Cards and Invitations

DETROIT STEEL CORPORATION

Producers of
Quality Hot and Cold Rolled Sheet and Strip Steel
and Rod and Wire Products

SALUTES

THE 1959 GRADUATING CLASS
OF WHEELERSBURG HIGH SCHOOL

DETROIT STEEL CORPORATION

Portsmouth Division

New Boston, Ohio

HERFF JONES COMPANY

Indianapolis, Indiana

MEDALS,

TROPHIES,

PRIZE CUPS,

ATHLETIC AND

AND SCHOLASTIC AWARDS

Compliments of BILL BLANTON

**H. LEET LUMBER
COMPANY**

A Good Place to Buy
Lumber - Coal - Paint

Sciotoville, Ohio



**MEMORIAL
BURIAL PARK**

Wheelersburg, Ohio

**THE PORTSMOUTH PAINT
COMPANY**

928 Gallia Street
Portsmouth, Ohio

**HIBBS HARDWARE
COMPANY**

Patronize Your Local Dealer
Wholesale Hardware

**WALKER'S PURE OIL
STATION**

General Repairing
Wheelersburg, Ohio

**STAPLETON OFFICE
SUPPLY**

Clary Adding Machines
Smith-Corona Typewriters

829 Sixth St. El 3-1187
1946-Our 12th Year-1958



Compliments of

BRAGDON'S

Portsmouth, Ohio

Compliments of

HENRY BUSSLER

Wheelersburg
Ohio

Compliments of

HIBBITS
HARDWARE
Harding Avenue
Sciotoville, Ohio



Compliments of

MUCHA'S SHELL SERVICE

Gallia and Blume
Sciotoville, Ohio

DUNN COAL COMPANY

Wholesale and
Retail Coal

Phone El 3-4369
Portsmouth, Ohio



Compliments of

PEPSI-COLA BOTTLING COMPANY

Portsmouth, Ohio



EVANS FLORAL SHOP

6804 Gallia St.
Sciotoville, Ohio

SCHULERS JEWELRY

Whats All Tick Tock Talk About
Schuler the Jeweler?

Stop in and See

5728 Gallia St.
Sciotoville, Ohio

Phone Scioto 310



WALKER SHOE STORE

420 Chillicothe St.
Portsmouth, Ohio



SHELA & YORK TURKEY FARM

Scioto Dale, Ohio

TOPS LAUNDROMAT

With Rug Shampooing Machine

New Boston, Ohio

FRAZIE SELF-SERVE

FOOD MARKET

Fresh Meats and Vegetables

Sciotoale, Ohio

Scioto 1080-k

Compliments of

DUVENDECK'S PAINT

STORE

5619 Gallia Street

Sciotoville, Ohio

Phone Scioto 276

Compliments of

NICK'S PLACE

Sandwiches 5¢ and 10¢

Pop 6¢

New Boston, Ohio

Phone 3964

Compliments of

COEY'S BARBER SHOP

222 Harding Avenue

Sciotoville, Ohio

ZIMMERMAN'S, INC.

Office Supplies and Equipment

810 Chillicothe Street

Phone EL 3-0530

Portsmouth, Ohio

LORRAINE'S

BEAUTY SHOP

Wheelersburg

Personality Haircuts

Permanent Waves

\$5.50 to 12.50

LORRAINE MUCHA, Owner

Phone El 3-7719 - Phone 299

Auto Parts

Iron - Metals

JACK FISH & SONS CO.

2330 Gallia St. 5333 Gallia St.

Portsmouth

Sciotoville

Ohio

Ohio

We Sell the Best and
Scrap the Rest

The Store of Friendly Credit

ROBERTS JEWELERS

413 Chillicothe Street
Portsmouth, Ohio

H. LEET LUMBER CO.

913 Washington - 404 Harding
Portsmouth, Ohio
Phone Scioto 334
"You Can't Beat Leet!"

AMERICAN

SAVINGS AND LOAN
ASSOCIATION

503 Chillicothe St.
Portsmouth, Ohio
Phone Elmwood 3-7070

Insured Savings
Home Financing

Compliments of

WEATHER SEAL

OF PORTSMOUTH, INC.

1313 Findlay St.
Portsmouth, Ohio

Baldwin Pianos Band
and Organs Instruments
Everything Musical

SUMMERS & SON, INC.

Portsmouth, Ohio

Gibson String Instruments

319 Chillicothe St.
Phone El 3-7380

Compliments of

DAIRY LAND

Route #52

Wheelersburg, Ohio

CALL A YELLOW CAB

Dial El 3-1121

Five Can Ride for
the Price of One

"Music Makes Your Life Happier"

Learn to Play the Hammond Organ
in 30 Days With Our:
Modern Rental Plan

For Anything Musical See Your
Home-Owned Music Store

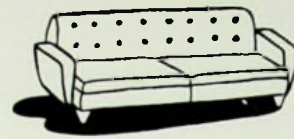
REITZ MUSIC CENTER

713 Sixth St. Portsmouth, Ohio

**VIC STAKER AUTO BODY
SERVICE**

Bear Wheel Alinement

Wheelersburg, Ohio



WILLIAMS FURNITURE

Locally Owned and Operated

"Quality Furniture at a
Reasonable Price"

Wheelersburg, Ohio

Best Wishes

From

WILLIAM O. BURCH

COUNTY ENGINEER



CHEEK'S SUPER MARKET

Home Killed Meat

Fresh Vegetables

Frozen Foods

Phone Scioto 100R

Wheelersburg

HYLAND STUDIO

736 1/2 5th St. EL 3-7049

Portsmouth, Ohio

WILLIS INSURANCE

General Insurance

Phone Sc. 116-L

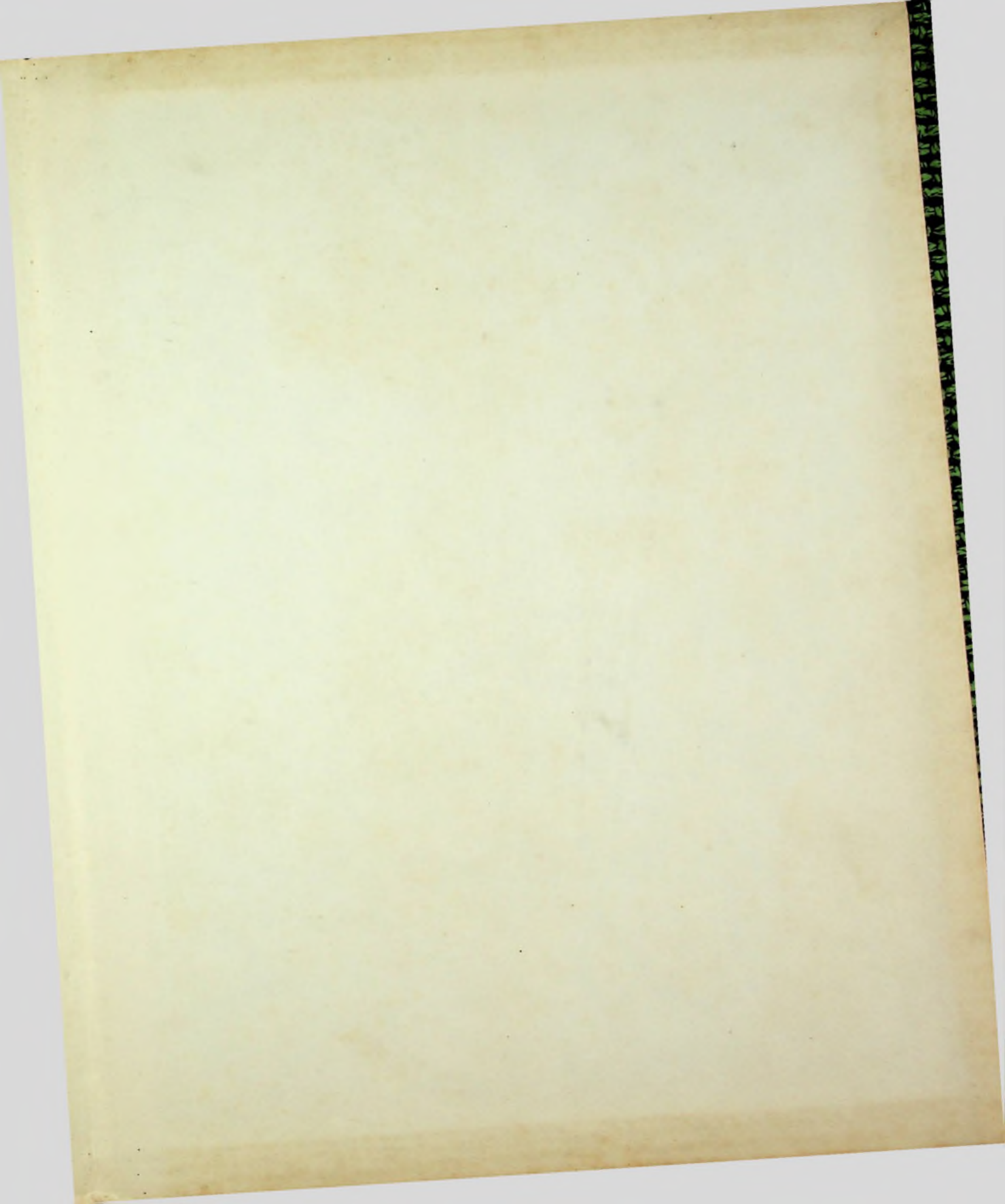
Wheelersburg, Ohio

SHUMPIE'S BAR-B-CUE



To: you and
Lots of Luck Always
best wishes
Love Doris Coche
a friend Always:

2
1



Handwritten text in a cursive script, likely Arabic or Persian, covering the entire page. The text is densely packed and appears to be a continuous narrative or treatise. The script is written in dark ink on aged, yellowish paper. The text is organized into several horizontal lines, with some lines being more prominent than others. The overall appearance is that of an old manuscript page.