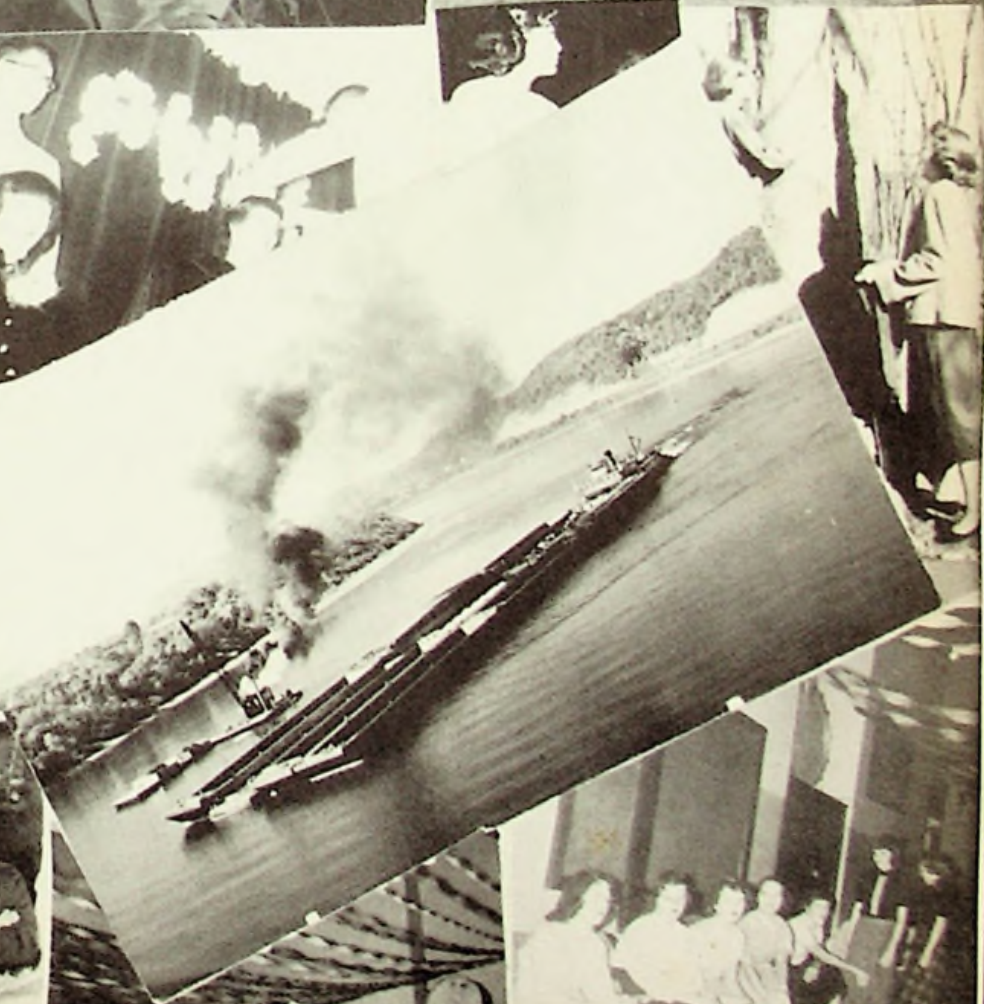
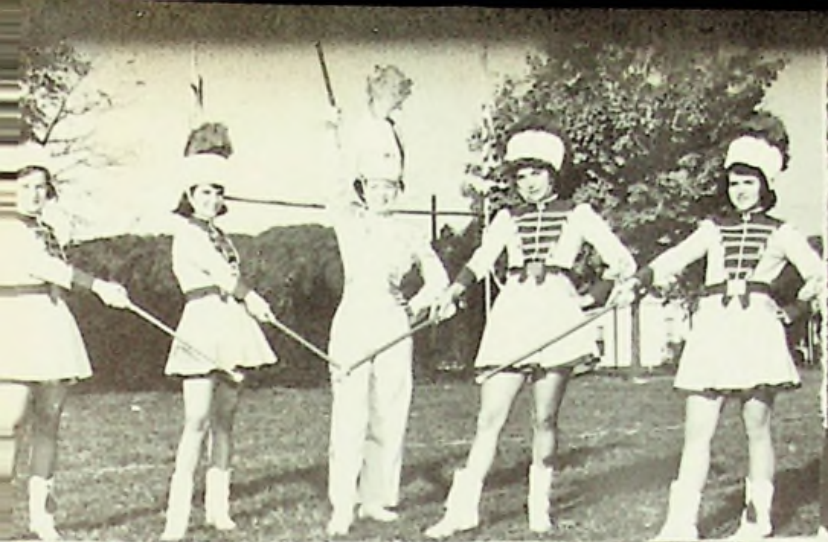


Jartan
1953







'53 TARTAN

EDITOR...

*Dottie
Kline*

SENIOR ED...

*Rovena
Coriell*

ASSOCIATE ED..

*Luth
Bradle*

BUSINESS MGRS..

*Phyllis Holt
Jo Ann Castle*



PUBLISHED BY THE
SENIOR CLASS of
EAST HIGH SCHOOL
PORTSMOUTH, OHIO



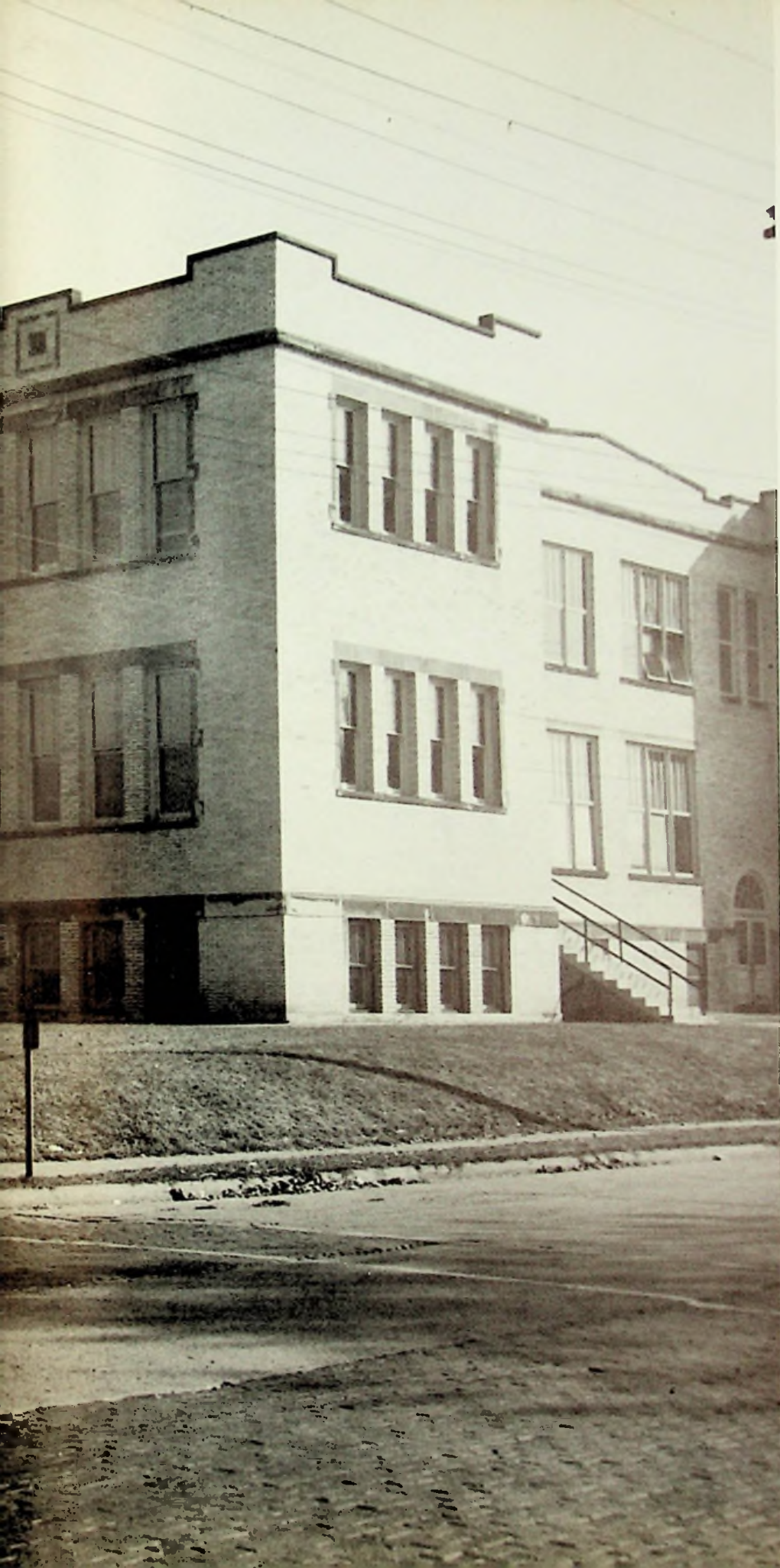


TABLE OF CONTENTS

Introduction

Faculty

Classes

School Life

Sports

Activities

Ads

DEDICATION



We the senior class of 1953 dedicate our annual to two of the most important members of the faculty: Our Coaches, Mr. Schomburg and Mr. Pogue.

They have raised our standards in athletics, sportsmanship and in our academic subjects.



STUDENT ADVISORY BOARD

The Student Advisory Board is now in its second year. It was introduced to replace the Student Council, which has the same basic principles as the Advisory Board. The Board is composed of the presidents of all school organizations with the purpose of giving the students a chance to voice their opinions in school government.

Pictured from left to right:

Ruth Beadle, Dorothy Kline, Jerry Miller, Donna Winters, Bob Rowe, Buren McLaughlin, Mike Stewart, Joann Castle, and Georgena Lantz. Standing - Advisor Mr. Smith.



Mr. McKelvey was elevated to Superintendent of the Portsmouth School System after serving as Principal at Portsmouth High School. This year Mr. McKelvey is completing his fourth year.

Mr. McKelvey is to be complimented on his fine work and leadership as Superintendent of Schools.

He received his A.B. from Ohio University and his M.A. from Ohio State University.

PORTSMOUTH CITY SCHOOL BOARD

SITTING: Mr. W. P. Ridenour, Mr. Arthur Rau, Mrs. Arthur C. Huston. STANDING: Dr. William Duvendeck, Mr. William Horr, Dr. Thomas C. Swope, and Mr. H. W. McKelvey.





Spanish Club --? Habló Espanol?

Now we Study??





Second Year Typing Class

Future Chemists of America





PRINCIPAL T. W. SMITH

Mr. Smith has spent fourteen years as teacher and twelve as principal here at East High School. He has gained the respect and admiration of all the students through his honesty and sincerity in school matters.



Dean Of Girls --- Miss Helen Taylor

Miss Taylor is completing her thirteenth year as Dean of Girls at East High School.

The students respect and admire Miss Taylor's counseling in their personal academic problems. She is Girls' League and Tri-hi-y sponsor. This year Miss Taylor was the advisor for our yearbook.

She received her A. B. degree at Miami University and M. A. degree from Ohio University.

Secretary --- Dolores Skeens

Miss Skeens was graduated from Portsmouth High School in the class of 1949. She was employed by Martings until she accepted a position with the Board of Education. In October of 1951, she was transferred to East High as secretary to Principal T.W. Smith.

Dolores is always in the office ready to help students in any possible way.





FACULTY





EDWARD L. POGUE
Hanover College, B.S.
Marshall College, M.A.; Civics, World
History
Physical Education, Assistant Basketball
& Football
Coach; Head Baseball Coach

HERMAN SCHOMBURG
Holbrook College, A.B.; Marshall Col-
lege M.A.
American History, Head Basketball &
Football Coach
Psychology

HELEN BASHAM
Orient College--Kankakee, Illinois
B.M. 47; B.M. 50
Music

ROBERT E. KLEIN
Eastman School of Music
B.M. Flute M.A. Music Education
Band



MANVERN F. SHOCK
Michigan State, Salem
College, B.S.
Typing, Bookkeeping,
Business Law
American Problems

MILDRED L. BAILEY
Portsmouth Interstate Busi-
ness College
University of Cincinnati,
B.S.
Shorthand, Business Eng-
lish, Business Training,
Economic Geography



MORRIS F. STAMM
B. S. in Education
Wilmington College, Wilmington, Ohio

JOHN FUGITT
Ohio State Uni-
versity, Mar-
shall College
B.S. M.A.,
General Science

GLORIA SMITH
Ohio State Uni-
versity, B.S.
Chemistry, Biolo-
gy.

A. KIRK WHEELER
Dennison Univer-
sity, B.S.
Algebra, Geom-
etry, Physics





FRANCES ANN BEODDY
Ohio State University
Wilmington College; B.S. Education
English 1, Home Economics

VIRGIL DONLEY
Ohio University, B.S. Education
Industrial Arts

ELIZABETH WHITEHOUSE
Eastern Kentucky State Teachers'
College,
George Peabody College for Teachers
A.B. and M.A.; English

CHRISTINE HEER
Sargent School of Boston University
Ohio University, Western Reserve
University,
B.S. and M.S. Library Science
Librarian, Physical Education

JOHN C. STEVENSON
Denison University, Ohio State Uni-
versity
National University of Mexico; A.B.
and M.A.
Latin, English, Spanish





C L A S S I F I C A T I O N

admitted



Weren't We CUTE ???





SENIOR CLASS

OFFICERS

President.Buren McLaughlin
Vice President.Bob Rowe
Secretary.Lena Brigner
Treasurer.Herma Cabiness



HAROLD AEH
"Harold"

Push-pull, Click-click, Changes film that quick
Stage Crew 3; Prom Committee, projection-
est.

POLLY JANE ASHWORTH
"Pot"

To worry little and study less is my idea of
happiness.

Girls' League 1,2,3,4; Glee Club 2; Band 1;
Athletics Banquet Waitree 3; Concession
Stand Committee 3; Prom Committee 3; An-
nual Staff (Photographer) 4; Tri-Hi-Y 4.



LARRY ATKINS
"Larry"

The tragic stage was set and then the
clown walked in.

Class Play 3; Hi-Y 2,3,4; Class dance
Com. 1,2,3,4; Homecoming Dance Com.
3,4; Glee Club 1,4; Glee Club Assembly
4; Prom Com. 3; Concession Stand Com.
3; Annual 4; Ring Com. 3; Operetta 4;
Class Assembly 4.

RUTH MARGARET BEADLE
"Beadle"

A girl and music both so sweet; a com-
bination hard to beat.

Glee Club 1, Assembly 1, Booster's Club
Minstrel 3, Class Play 3, Tri-Hi-Y 3,4,
Concession Stand Committee 3, Easter
Assembly 3, Sr. Assembly 4, National
Honor Society 3,4, H.M.S. Pinafore 1,
Highlander 3, Tartan 4, Girls' League
1,2,3,4, P.H.S. Assembly 3, Student Ad-
visory Board 4, Annual (Associate Ed.)
4.



GEORGE WILLIAM BELOAT
"Jaws"

I'd do great things except they're too much
work.

Football manager 3,4; Prom Committee 3;
Baseball 1,2,3; Basketball 2; Basketball Man-
ager 4;

LETITIA BENTLEY
"Tish"

There's a mischievous twinkle in her eye.
Concession Stand Committee 3; Class Play
(Stage Crew) 3; Prom Com. 3; Spanish Club
4; Class Dance Committee 3,4; Girls' League
1,3,4; Athletics Banquet Waitress 3.



RAY BURKE

"Ray"

I could sleep all day, nights are different. Football 1,3,4; Glee Club 1,3,4; Stage Crew Class Play 3; Prom Comm. 3.

DON BUSSEY

"Spike"

The world knows nothing of its greatest men. Basketball 1,2,3; Glee Club 3,4; Operetta 3; Hi-Y 2,3,4; Concession Stand Comm. 3; Prom Comm. 3; Annual Staff 4; Tartan Staff 4.



LENA MAE BRIGNER

"Lena"

"She is pretty to walk with, and witty to talk with, and pleasant, too to think on."

Glee Club 1,2; Operetta 1; Girls League 1,2,3,4; Prom committee 3; Concession Stand comm. 3; Annual Staff 4; Class Officer 4; Tri-Hi-Y 2,3; Tri-Hi-Y Officer Announcement Comm. 4; Usherette Class Play 3; Class Dance Comm. 3; Homecoming Dance Comm. 4; Prom Waitress 2; Glee Club Minstrel 2.

EVELYN BROWN

"Kitty"

Intelligent, ambitious and full of fun, she possesses everyone.

Glee Club 1,2; Operetta 2; Glee Club Minstrel 2; Girls League 1,3,4; Class Play 3; Concession Stand Comm. 3; Prom Comm. 3; Librarian 4; Annual Staff 4.



REGENIA ANN BOOTEN

"Jeanie"

"In school she's calm and demure, outside school we're not so sure."

Glee Club 1; Class Officer 3; Class Play Stage Crew 3; Prom Committee 3; Dance Committee 1,2,3,4; P. H. S. Exchange Assembly, Annual 4; Concession Stand Committee 3; Girls League 1,2,3,4; Dance 3; Officer 4; Miss Sophomore Att. 2; Ring Committee 3; Homecoming Attendant 3; Sr. Class Assembly.

RAYMOND BOYD

"Ray"

If bright remarks were grains of sand, he'd be a desert."

Hi-Y 2,3,4; Basketball 1,2,3,4; Baseball 2,3,4; Class officer 1; Stage Crew Class Play 3; Latin Club 1; Prom Committee 3.





HERMA DIANNE CABINESS
"Herma"

We like our girls slender, tender, and tall. Class Officer 1,4; Dance Com. 1,2,3,4; Invitation Com. 4; Prom Com. 3; Prom Waitress 2; Class Play 3; Tri-Hi-Y 3,4; Officer 4; Spanish Club 3; Assembly 3; Scholarship Team 3; Girls' League 1,2,3,4; Glee Club 4; Minstrel 4; Tartan 3,4; Band 1,2,3; Annual 4; Lat. Club 1,2; P. H. S. Assembly 4; Lat. Club Assembly 1,2; Athletics Banquet Waitress 3; Homecoming Dance Com. 3,4; Baccalaureate Usherette, Sr. Assembly.

BARBARA JO ANN CASTLE
"Jo"

High school days have their delights, but they can't compare with high school nights. Spanish Club 2; Assembly 2; Concession Stand Com. 3; Class Play 3, Annual 4, National Honor Society 3,4, Scholarship Team 2,3, Girls' League 1,2,3,4; Pres. 4; Ring Com. 3, Prom Com. 3, Dance Com. 1,2,3; Athletics Banquet Waitress 3, Sr. Assembly Play.



RUTH MARIE CHAMBERLIN
"Ruthie"

I will be the pattern of all patience. Glee Club 1,2,3; Prom Com. 3; Girl's League 1,2,3,4; Glee Club Assembly 1, 2,3.

DON CONKLIN
"Hap"

I take life easy-why rush? Prom Com. 3; Hi-Y 4; Annual Staff 4; Tartan Staff 4.



PATRICIA RUTH CONLEY
"Pat"

She's likeable as she is lookable. Prom Waitress 2; Prom Com. 3; Scholarship Team 1,2; Class Play Usherette 3; Annual Staff 4; Athletics Banquet Waitress 3.

ROVENA OLLANE CORIELL
"Renie"

There is mischief in the best of girls. Glee Club 2; Glee Club Assembly 2; Glee Club Minstrel 2; Prom Com. 3; Dance Com. 1,2,3,4; Spanish Club 2,3; Spanish Club Assembly 2,3; Xmas Dance 2,3; Tri-Hi-Y 4; Concession Stand Com. 3; Scholarship Team 1,3; Prom Waitress 2; Athletics Banquet Waitress 3; Girl's League 1,3,4; Girls League 1,3,4; Girls League Officer 4; Homecoming Dance 4; Annual Staff (Senior Editor) 4.



EVELYN FEREBEE
"Ev"

She came late but we're glad she's here.
Nelsonville High School 1,2,3; East High 4.

GENEVA FIELDS
"Neve"

A rare combination of wisdom and wit, half
wisdom and half wit.
Spanish Club 2; Spanish Assembly 2; Con-
cession Stand Comm. 3; Class Play, Usherette
3; Tri-Hi-Y 4; Girls League 4.



JOSEPH ESSMAN
"Joe"

A nicer guy you couldn't find.
Football 2,3,4; Co-Captain 4; Baseball
2,3,4; Band 1; Basketball 2,3; Most Val-
uable Player Award, Football 4.

GLEND A ETTERLING
"Glenda"

We grant although she has much wit,
she's very shy in using it.
Senior Assembly; Glee Club 2,3; Oper-
etta 3.



RONALD DEEMER
"Deemo"

He's the very devil.
Football 1,2,3,4; Basketball 1,2,3,4; Base-
ball 2,3,4; Spanish Club 3; Xmas Dance 3;
Class Dance Comm. 1,2,3,4; Prom Floor Show
2; Class Play; Stage Crew 3.

RICHARD B. DUDUIT
"Dick"

Love me little, love me long.
Sr. Class Assembly, Spanish Assembly 3;
Xmas Dance 3,4; P. H. S. Assembly 2; Bas-
ketball 1,3,4; Band 1,2,3,4; Pep Band 1,2,3,
4; Glee Club 3,4; Glee Club Assembly 3,4;
Operetta 3,4; Hi-Y 2,3,4; Annual 2,4; School
Paper 1,2,3,4; Dance Comm. 1,2,3,4; Class
Officer 2; Homecoming Float Comm. Con-
cession Stand Comm. 3; Prom Comm. 3;
Class Ring Comm. 3; Xmas Cantata 3; Class
Play, Stage Crew 3; Student Council 2;
Homecoming Dance Comm. 2,3,4.



CARL GEE
"Carl"

Men of few words for the best of men.

JANET SUE HEHL
"Susie"

She talks like a revolving door and is as inquisitive as an X-ray.
Girls' League 1,2,3,4; Prom Waitress 2; Concession Stand Committee 3; Librarian 3,4; Annual Staff 4.



JERRY VERNON HENSON
"Jarr"

If basketball were music, he'd be the whole brass band.
Football 1,2,3,4; Basketball 1,2,3,4; Baseball 2,3,4; Dance Committee 1,2,3,4; Class Play (Stage Crew) 3; Spanish Club 3; Christmas Dance Committee 3; Prom Committee 3.

PHYLLIS ARLENE HOLT
"Trig"

She's not a card, she's the whole deck.
Girls' League 1,2,3,4; Latin Club 1,2; Latin Club Assembly 1,2; Spanish Club 3; Scholarship Team 2,3; Valentine Dance Princess 1; Dance Committee 1,2,3,4; Band 1,2; Highlander Staff 3; Prom Committee 3; Homecoming Queen 4; Senior Assembly, Annual Staff (Business Manager).



AULIVE INEZ HORNER
"Cherry"

Her head is very, very light, in fact she's a blond.

Glee Club 1,2,3; Glee Club Minstrel 1; Dance Committee 1,2,3,4; Ring Committee 3; Prom Waitress 2; Prom Committee 3; Class Play 3; Girls' League 1,2,3,4; Concession Stand Committee 3; Highlander Staff 3.

BENNIE WELLS JENKINS
"Ben"

As a football captain, he's really great. He'll be somebody just you wait.

Football 1,2,3,4; Basketball 1,2,3,4; Baseball 2,3,4; Football Co-captain 4; S. O. C. Football Team 4; Glee Club 2,3,4; Glee Club Minstrel 2; Glee Club Assembly 2,3; Hi-Y 2,3,4; Hi-Y Officer 4; Latin Club 1,2; Latin Assembly 1,2; Annual Staff (Sports' Editor) 4; Dance Committee 4; Spanish Club 3.

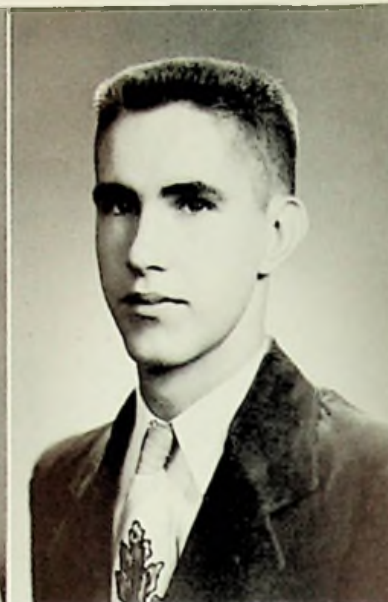


CAROL KNIGGE
"Carol"

Winsome in both smile and action.
Tri-Hi-Y 4; Girls League 1,2,3,4; Dance
Comm. 1,2,3,4.

ROY KNIGHT
"Albie"

Sometimes he sits and thinks sometimes just
sits.
Basketball 2,3; Baseball 2,3; Class Play,
Stage Crew 3; Latin Club 1; Latin Assembly
1; Prom Comm. 3.



MAX KINKER
"Max"

The harder I try the gooder to be, the
worser I am.

Football 2,3,4; Glee Club 1,2,3,4; Hi-Y
2,3,4; Prom Committee 3; Senior Class
Assembly, Operetta 4; Spanish Club 4;
Xmas Dance 4; Homecoming Dance 2,
3,4; Stage Crew 3; Class Dance 1,2,3,4.

DOROTHY ANN KLINE
"Dottie"

Always doing, never done, be it mis-
chief, work or fun.
Class Officer 1,3; Dance Comm. 1,2,3,
4; Glee Club 2,4; Operetta 4; Boosters
Club Minstrel 2; Tri-Hi-Y 3,4; Officer
4; National Honor Society 3,4; Junior
Cup 3; Homecoming Attendant 4; An-
nual (Ed.-in-Chief) 4; Spanish Club 2,3;
Spanish Assembly 3; Easter Assembly 3;
Class Play Cast 3; Concession Stand 3;
Girls League 1,2,3,4; Highlander Staff 3;
Tartan Staff 4; Xmas Dance 2,3; Class
Ring Comm. 3; Scholarship Team 2.



EVELYN JENKINS
"Ebby"

Her heart is like the moon. There's a man
in it.

Tri-Hi-Y 4; Annual Staff 4; Librarian 4;
Girls League 1,3,4.

ANGUS JONES
"Gus"

I am here! Shall we begin?
Latin Club 2,3; Latin Assembly 2,3; Hi-Y 2,
3,4; Dance Comm. 1,2,3,4; Homecoming
Dance Comm. 2,3,4; Concession Stand
Comm. 3; Prom Comm. 3; Class Assembly
4.



DORIS GEORGENA LANTZ
"George"

She can't live long single.
Dance Committee 1,2,3,4; Girls' League 1, 2,3,4; Band 1,2; Ring Committee 3; Cheerleader 2,3,4; Cheerleader Captain 4; Prom Committee 3; Student Advisory Board 4.

GLENN LEESBURG
"Glenn"

I've no time for girls or fame, mere diploma is my aim.



CHARLES BUREN McLAUGHLIN
"Buren"

Everything he does, he does well and he does everything.
Band 1,2,3,4; Latin Club 1,2; Latin Club Assembly 1,2; Spanish 3; Ring Committee 3; Class president 4; Tartan Staff 4; Class Play 3; Student Advisory Board 4; Hi-Y president 4; Scholarship team 1,2, 3; Prom Committee 3; Pep Band 1,2; Homecoming Dance Committee 4.

RHETHA OTEENE MASSIE
"Rhetha"

A small tornado coming fast.
Band 1,2,3,4; Majorette 2,3; Drum Major 4; Tri-Hi-Y 3,4; Tri-Hi-Y Officer 4; Prom Committee 3; Ring Committee, Junior Class Play 3; P. H. S. assembly 3; I Speak for Democracy winner 4; Annual Staff 4; Tartan Staff 4; Glee Club 1,2.



JOYCE MAY
"Lulu"

Beneath her quietness lies true sincerity.
Tri-Hi-Y 4; Glee Club 1,2,3; Glee Club Officer 3; Glee Club Assembly 3; Dance Committee 1,2,3,4; Prom Committee 3; Concession Stand Committee 3.

ROBERT MERSHON
"Nebraska"

A character if there ever was one.
Spanish Club 4.



JAMES OILER
"Jim"
Silence is golden.

CLEMENTINE PARKER
"Clemmy"
Capable, Conscientious, and Quiet.
Girls' League 1,2,3; Annual Staff 4; Prom
Waitress 2.



JOYCE MINTER
"Joyce"
She's here. I heard here giggle.
Class Play (Prompter) 3; Librarian 4;
Girls League 1,2,3,4; Prom Committee
3; Annual Staff 4.

JERRY EDGAR NICHOLS
"Jerry"
Good men are hard to find. Take care
of me.
P. H. S. 1,2,3; Football 4; Hi-Y 4.



ROGER EUGENE MILLER
"Rog"
Work? Where did I hear that word before?
Junior Class Play (Stage Crew) 3; Glee Club
4.

MARTHA MILES
"Marty"
Full well doth she sing.
P. H. S. 1; Prom Committee 3; Latin Club
2.



PHYLLIS HOLBROOK PARKS
"Phil"

Whatever is worth doing at all, is worth doing well.

Majorette 1,2; Drum Major 3; Latin Club 1, 2; National Honor Society 3; P. H. S. assembly 3; Scholarship Team 1,2,3; Spanish Club 3; Class Officer 3; Student Advisory 3; Prom Committee 3; Band 1,2,3; Cheerleader 2; Glee Club 1,2.

BROOKS CARTER PARKS
"Dob"

Just call me Doc, I can operate anywhere. Scholarship Team 1,2,3; Band 1,2; Football 1,2,3; Hi-Y 3; Latin Club 1,2; Spanish Club 3; Junior Class Play 3; Latin Assembly 1,2.



LEONARD POWELL
"Lenny"

Bored of Education.

Hi-Y 3,4; Prom Committee 3; Dance Committee 1,2,3,4.

ROBERT REED ROWE
"Bob"

If I ever find love, I'll put it in a test tube.

Spanish Club 3; Latin Club 1,2; Band 1, 2,3,4; Scholarship Team 1,2,3; Annual Staff, Class Officer 2,4; Hi-Y 2,3,4; Hi-Y Tartan (Editor) 4; Prom Committee 3; Announcement Committee 4; Pep Band 1,2; Student Advisory Board 4.



JAMES ROSE
"Jim"

Get thee behind me books.
Annual Staff 4.

ROSEMARY RUSSELL
"Rosie"

Girls' League 1,2,4; Annual Staff 4; Prom Committee 3; Librarian 4; Usherette 3.



HELEN SMITH
 "Helen"
 Cheerful and ready to help.
 Prom Committee 3.



GELOMA SPEARRY
 "Jokie"
 She looks quiet but looks can be deceiving.
 Latin Club 1,2; Girls League 1,2,3,4; Annual
 Staff, Tri-Hi-Y 4; Prom Committee 3; Band
 2,3,4.



SONYA SUE SENNETT
 "Softy"
 To laugh and giggle is her delight, and
 she never stops from morn til night.
 Dance Committee 1,2,3; Glee Club 1,2,
 3; Ring Committee 3; Girls League 1,2,
 3,4; Annual Staff (School Life) Con-
 cession Committee 3.



GARY SERGENT
 "Gary"
 Strongest minds are not always heard.
 Football 1,3,4; Annual Staff (Artist) Hi-
 Y 3,4; Tartan Staff 4; Spanish Club 3;
 Latin Club 1,2; Pep Band 1,2; Homecom-
 ing Dance Committee 3,4; Junior Class
 Play 3; Class Officer 2.



BARBARA SAYLERS
 "Barb"
 Kindly, efficient, and merry is she.
 Girls' League 1,4.

NINA JOAN SAUNDERS
 "Jo"
 Laughter is a healthful exertion.
 Band 1,2,3,4; Girls' League 1,2,3,4; Tri-Hi-
 Y 4; Announcement Committee 4; Prom
 Committee 3; Annual Staff, Glee Club 4;
 Banquet Waitress, Prom Waitress.



JAMES STOCKHAM
"Jim"

Trustworthiness and dependability are sure signs of character.
Prom Committee 3.

RONALD STURGILL
"Sturg"

A personality to match his pitching arm.
G. H. S. 1; Baseball 2,3,4; Football 4; Basketball (manager) 4; Glee Club 4; Glee Club Operetta 4.



MIMA MARIE TAYLOR
"Mima"

Music is just one of her charms.
Latin Club 1,2; Spanish Club 3; Tri-Hi-Y 3,4; Prom Committee 3; Scholarship Team 3; Class Play 3; Girls' League 1, 2,3,4; P. H. S. Assembly 3; Annual Staff.

MARTHA JANE THOMPSON
"Janie"

She's little, she's wise, she's a terror for her size.
Girls League 1,2,3,4; Ring Committee 3; Concessions Stand Committee 3; Annual Staff, Prom Committee 3; Glee Club 1,



JOHN WARNEKE
"Johnny"

None but himself could be his parallel.
Tartan Staff 4; Junior Class Play (Stage Crew) 3; Scholarship Team 3; Hi-Y 2,3,4.

BETTY RUTH WELCH
"Betty"

When done by her 'tis done.
Queen attendant 1; Cheerleader 2,3,4; Latin Club 1,2; Latin Assembly 1,2; Spanish Club 3; Prom Committee 3; Glee Club 2,4.





WILMA WHITT
"Wilma"

Winsome in both smile and action.
Glee Club 1,2,3,4; Dance Committee 1,2,3,
4; Prom Committee 3; Girls League 1,2,3,4.

RAYMOND DAVID WILL
"Ray"

If this is liberty, give me death.
Class Play 3; Dance Committee 1,2,3,4;
Band 1,2; Concession Stand Committee 3;
Prom Committee.

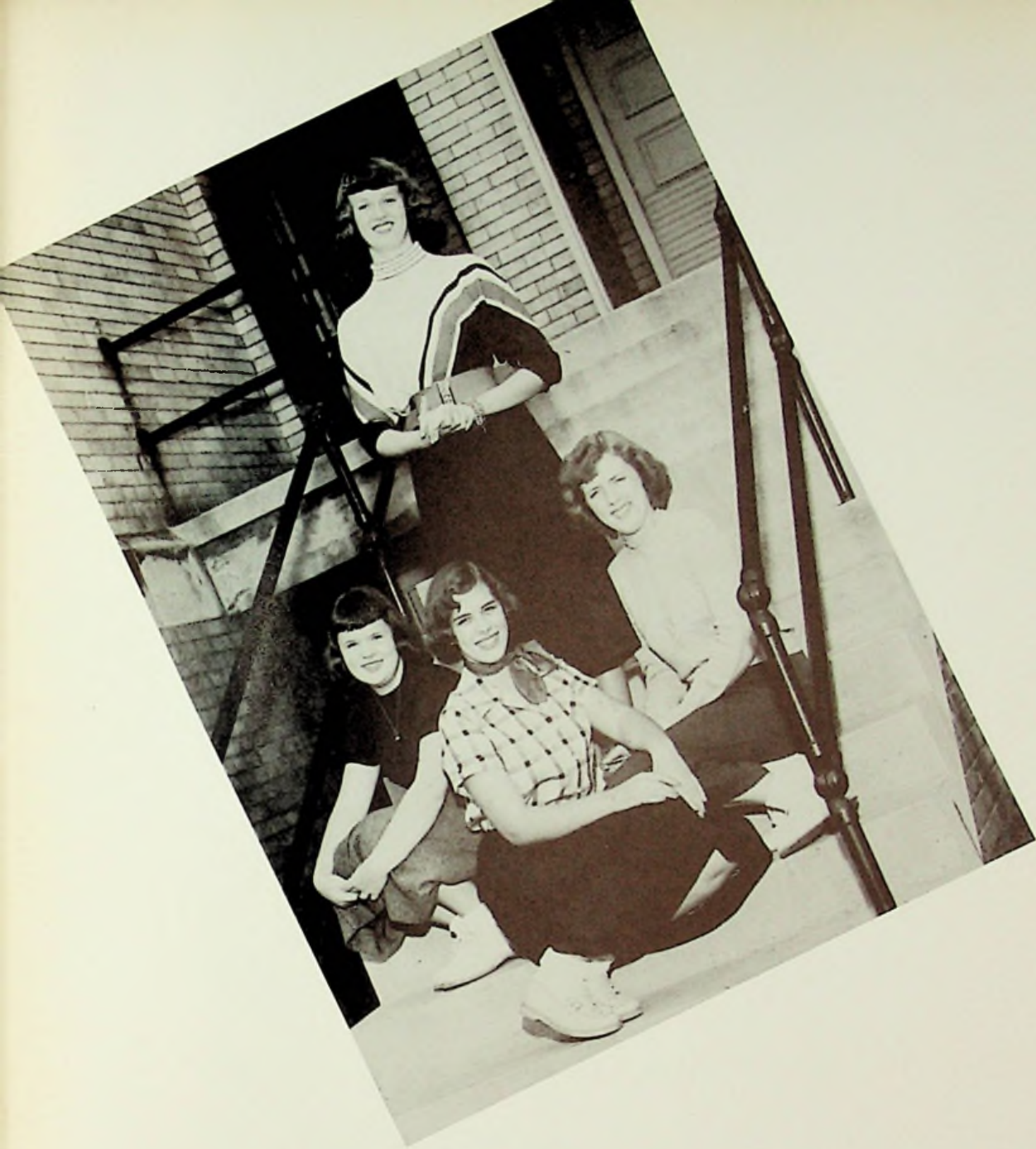


IRA MAULT
"Ira"

Even though he may seem shy, he really is
a friendly guy.
Latin Club 1,2; Band 1; Prom Committee 3;
Latin Assembly 1,2.



Election Day, November 3, 1953
"Mock Election"
G. Jones, H. Cabiness, R. Sturgill, R. Cor-
teill, R. Burke.



JUNIOR CLASS

OFFICERS

President Donna Winters
Vice President Patty Kline
Secretary Bobby Jo Ketter
Treasurer Rachael Young



ROW I: D. Johnson, P. Dials, D. Hood, R. Felts, J. Hurst, A. Keller, R. Brown, M. Chamberlain, B. Hanes, J. Hoshins. ROW II: B. Benson, J. Johnson, D. Evans, R. Blankenship, F. Burke, L. Gilpin, E. Craft, P. Butler, K. Bussa, W. Hacker, V. Grashel. ROW III: B. Dodds, F. Fyffe, W. Fitch, D. Hickman, S. Benner, D. Bonzo, E. Craig, W. Johnson, M. Davis, J. Jackson.

ROW I: J. Kelley, L. Preston, B. Walker, B. Simpson, J. McGlove, B. Knowles, R. Logan, R. Stevens, J. Withrow, L. Kiser, M. Smith, P. McCardle, C. Reed. ROW II: R. Purcell, R. Young, P. Robbins, D. Winters, P. Kline, J. Plummer, V. Rudd, V. Welch, W. Thompson, S. Chomberlain. ROW III: D. Willeams, M. Stout, T. Shonkwiler, P. Lowe, S. Ogg, B. Taylor, B. Ketter, A. Rose, B. Salyers, D. Smith.





SOPHOMORE CLASS

OFFICERS

President Michael Stewart
Vice President Evelyn Yeley
Secretary Janice Faine
Treasurer JoAnn Gee



ROW I: B. Payton, D. Kiser, W. Kite, B. Ogg, T. Leach, T. Selbee, E. Roberts, W. McFarland, J. Keller, J. Shoemaker. ROW II: L. Pierce, C. Neimer, B. Miller, P. Simpson, R. Shoemaker, R. Noxell, N. McKelvey, E. Moyer, E. Messer. ROW III: R. Ratcliff, S. Plymale, B. Kitchen, B. Schouster, B. Meddings, C. Micha, N. Knapp, W. Phillips, H. Nagel.

ROW I: C. Sparks, R. Williams, E. Smith, P. Stanley, R. Taylor, M. Stewart, R. Turner, R. Veach, ROW II: M. Garnell, M. Steele, D. Williams, R. Whitely, E. Yeley, C. Smith, C. Smith, C. Thomas. ROW III: C. Williams, C. Walker, B. Tomlin, J. Smith, G. Stewart, K. Warner.





ROW I: W. Harr, R. Frazee, L. Harr, D. Drake, C. Frazier, S. Dummit, D. Hutchenson, F. Hinsley, D. Keller, R. Fetty. ROW II: G. Goodman, M. Johnson, W. Hanes, J. Fyffe, P. Evans, D. Keeton, J. Gallion, A. Hartlage, P. Howell, G. Jenkins. ROW III: J. Johnson, J. Faine, J. Fainnin, B. Dudit, D. Hale, J. Gee, F. Howell, J. Howard, G. Imms.

ROW I: R. Dever, F. Conley, J. Beasley, B. Atkins, J. Chamberlain, K. Bussa, G. Bailey, D. Conkey, V. Crabtree, D. Adams. ROW II: M. Dill, R. Brown, M. Baer, L. Crawford, N. Burton, W. Atkins, R. Bonzo, B. Crabtree, B. Boggs, T. Davis, R. Artis. ROW III: D. Highis, I. Cox, B. Chamberlain, J. Crabtree, E. Campbell, M. Allard, I. Crisp, J. Brock, B. Allen.





FRESHMAN CLASS

OFFICERS

President Jerry Miller
Vice President Phyllis Withrow
Secretary Sue Hoskins
Treasurer Shirley Percell



ROW I: B. Kitchen, D. Adkins, R. Stevens, E. Collins, V. Baer, C. Americalli, D. Kegley, L. Allard, B. Brady, A. Brown. ROW II: P. Taylor, D. Burke, D. Jarrell, G. Keller, J. McCormick, P. Bramblett, R. Benner, B. McGraw, C. Pierce. ROW III: J. Phillips, R. Logan, F. King, M. Kinnission, B. Bobbst, S. Ramey, D. Shepard, C. Caldwell, J. Brady, P. Mershon.

ROW I: N. Glasscock, D. Hacker, J. Hutchinson, B. Wilson, J. Taylor, D. Fugitt, J. Hehl, T. Williams, C. Yarnell, T. Vallance, G. Willis. ROW II: V. Hammond, W. Hayden, J. Walker, S. Hoskins, P. Whitt, S. Gill, S. Thompson, P. Withrow, P. Hood, B. Hall, C. Weaver. ROW III: M. Young, K. Whitt, M. Huestis, A. Hutchinson, N. Gregory, R. Williams, Z. Hunt, P. Gee, M. Gammon.





ROW I: J. Schneider, J. Russell, B. Shoemaker, C. Schneider, C. Craft, N. Ricks, G. Davis, H. Cooper, D. Dawson, J. Salyers, B. Conley. ROW II: D. Copley, J. Ruley, S. Purcell, W. Baer, J. Taylor, P. Carley, N. Spearry, D. Compton, V. Craft, D. Ervin. ROW III: B. Ross, J. Spence, S. Fisher, M. Schouster, L. Rose, R. Shaw, W. Reed, R. Cooper, M. Downey, V. Coriell.

ROW I: J. Miller, D. Patton, J. Jordon, L. Oiler, B. Lewis, E. Ramey, R. Lewis, D. Kelley, D. Bussa. ROW II: D. McClurg, G. Anders, L. Bailey, R. Preston, D. Jennings, J. Johnson, G. Boggs, P. Allard, M. Moore. ROW III: R. Bradbury, J. Bussey, J. Basham, J. Jordon, P. Smith, M. Burke, G. Partridge, M. Lemaster, B. Powell, B. Christy.



5
L
I
F
E

Rogues
Gallery



GATTY



OUR
QUEEN



"CUTE"





Music Maestros, Please



Hits-The-Spot



Hold-Me-Tight

Hopefuls



Stag Line





"Summertime"

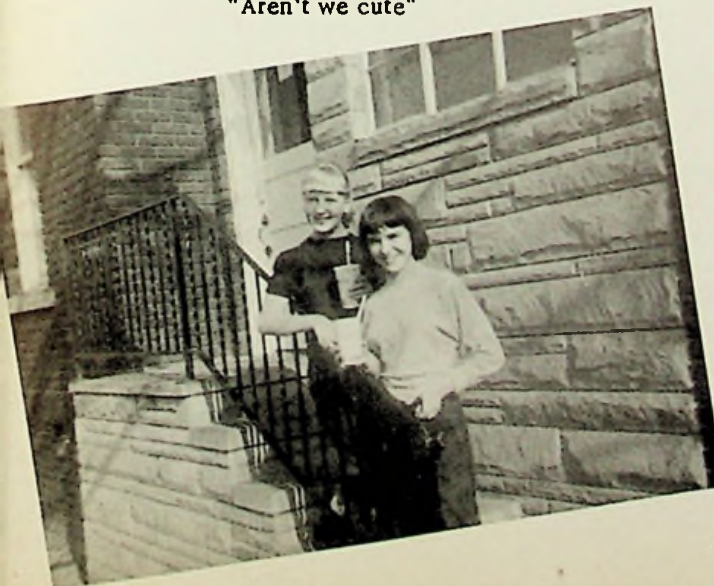


"Pals"

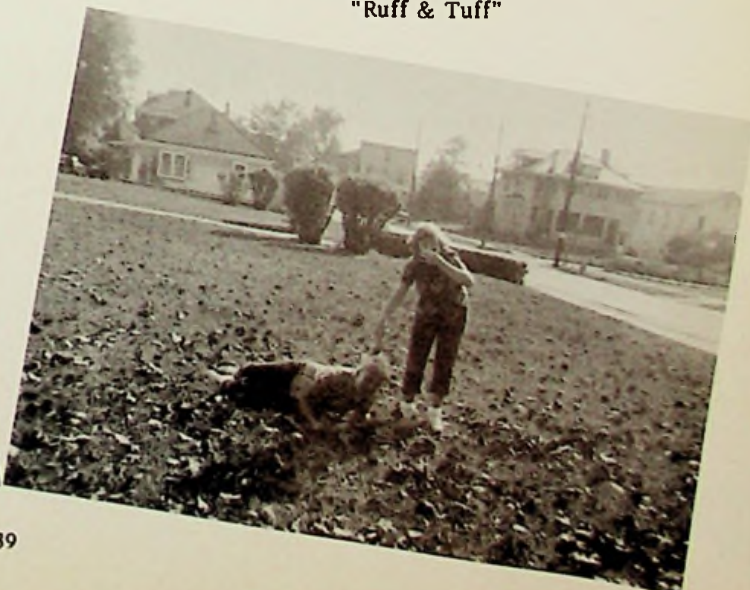


"Down Boy"

"Aren't we cute"



"Ruff & Tuff"





"Peanuts, Popcorn!"



"Tickets Please"



"Time Out"

"Half Time"



"Money Please"



THE LATIN CLUB DANCE



QUEEN -- Nita C.
 KING -- Joe S.
 PRINCE -- Dick Mc C.
 PRINCESS -- Sue H.



"HEP CATS"



"SWEETHEART DANCE"



"Trees"



"Wanna Ride?"



"Hit it Jackson!"

The Big "4"



“I

WANNA

GO

HOME”





What! No Boys



"Happy go lucky"



Oh, these freshmen

Oh happy day.



After the game.





"Monkey Business"



"The Gang"



"3:15, At Last!"

"C-h-e-e-s-e"

"BIG DEAL"





GOING STEADY



Barb & Wes



Phil & Jerry



Jennie & Ronnie



Jo & Rufus



Billy & Joe

Janie & Bob



Sally & Puff



SP



RTS





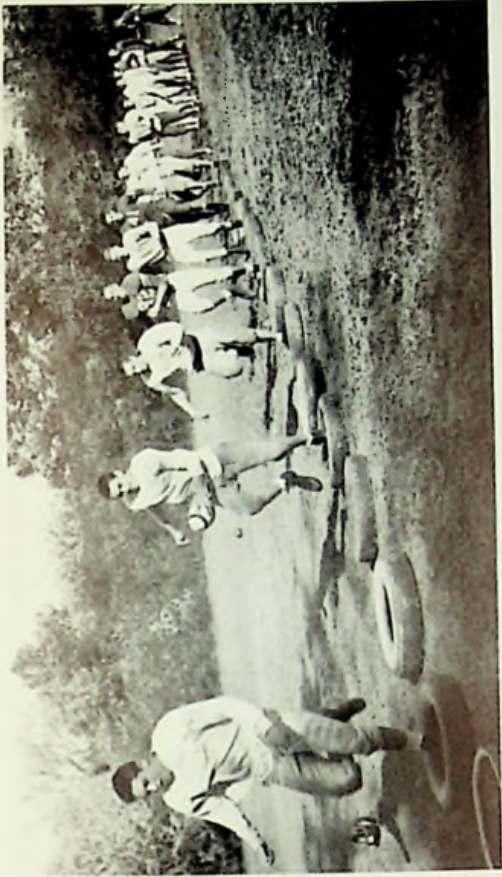
ROW I: D. Keller, P. McCardle, M. Smith, J. Hoskins, R. Logan, R. Frazee, R. Deemer, J. Henson, J. Essman, R. Brown, M. Kinker, R. Burke. ROW II: Assistant Coach - Buzz Pogue, R. Brown, S. Dummit, T. Selbee, K. Bussa, P. Stanley, B. Benson, R. Knowles, B. Jenkins, G. Sergeant, J. Nichols, R. Felts, L. Preston, R. Hood, B. Kitchen, N. Glasscock, Coach - Herm Schomburg. ROW III: Manager - George Beloat, W. Ogg, L. Horr, J. Brown, J. Schneider, T. Hutchinson, D. Bussa, R. Preston, B. Kite, W. Harr, Jerry Withrow, Manager - Richard Fetty.

COACHES AND CAPTAINS

Assistant Coach, Pogue, Co-Captains, Joe Essman and Ben Jenkins, Head Coach, Schomburg.



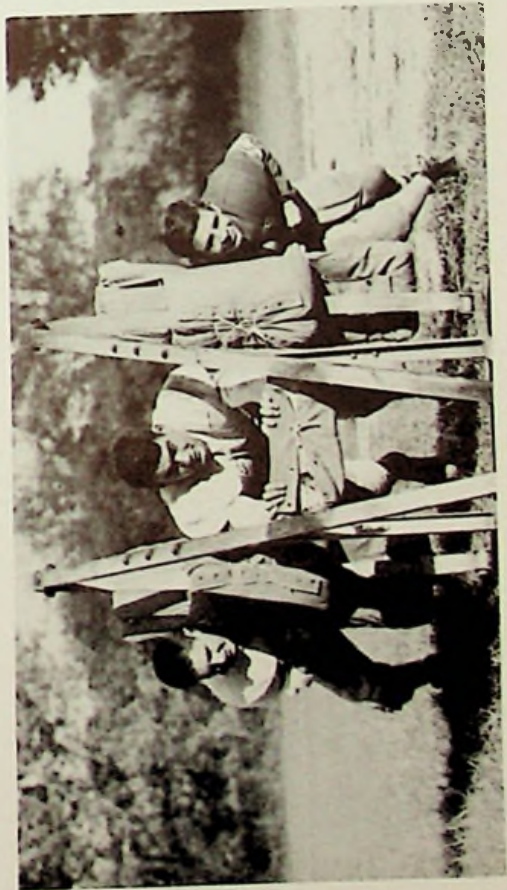
It's all in the game!



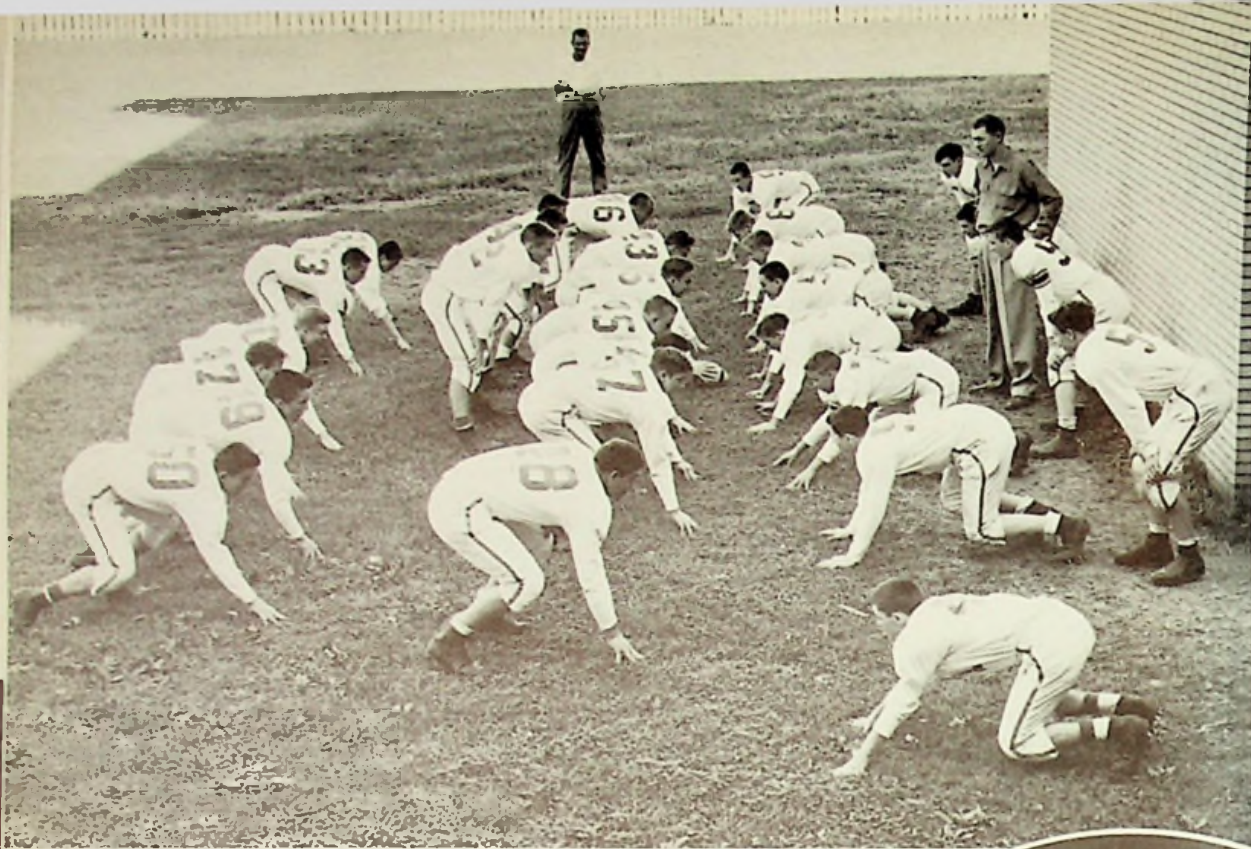
Nice Catch!



Up and Away!

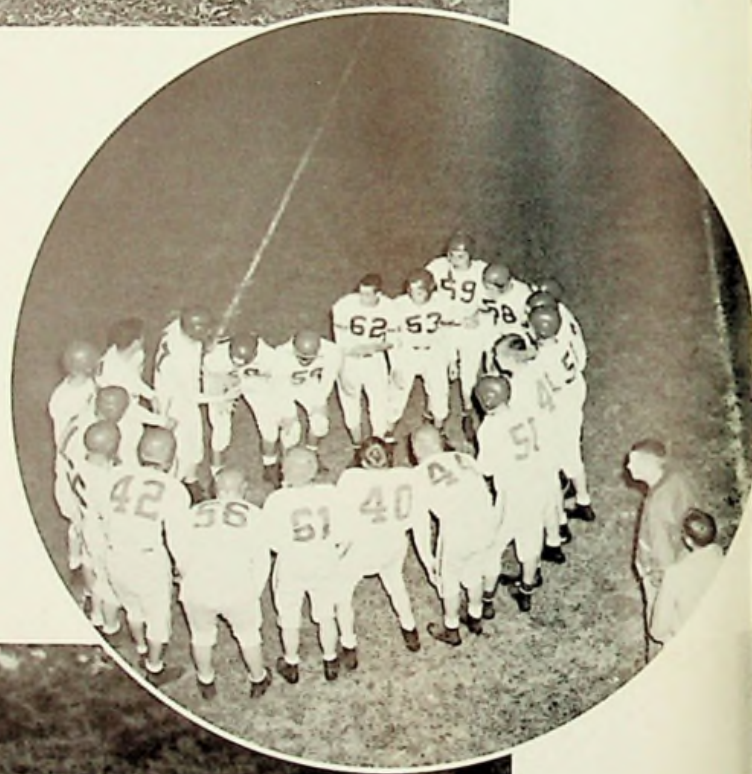


Hit the Dummy!



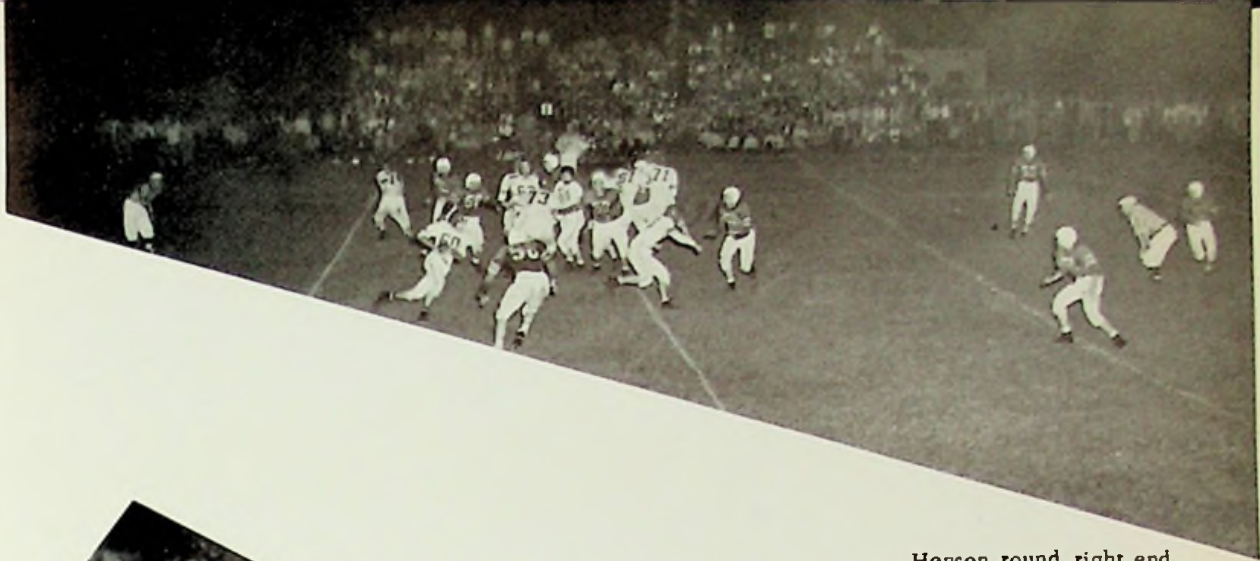
Last minute check up before season begins

In the huddle

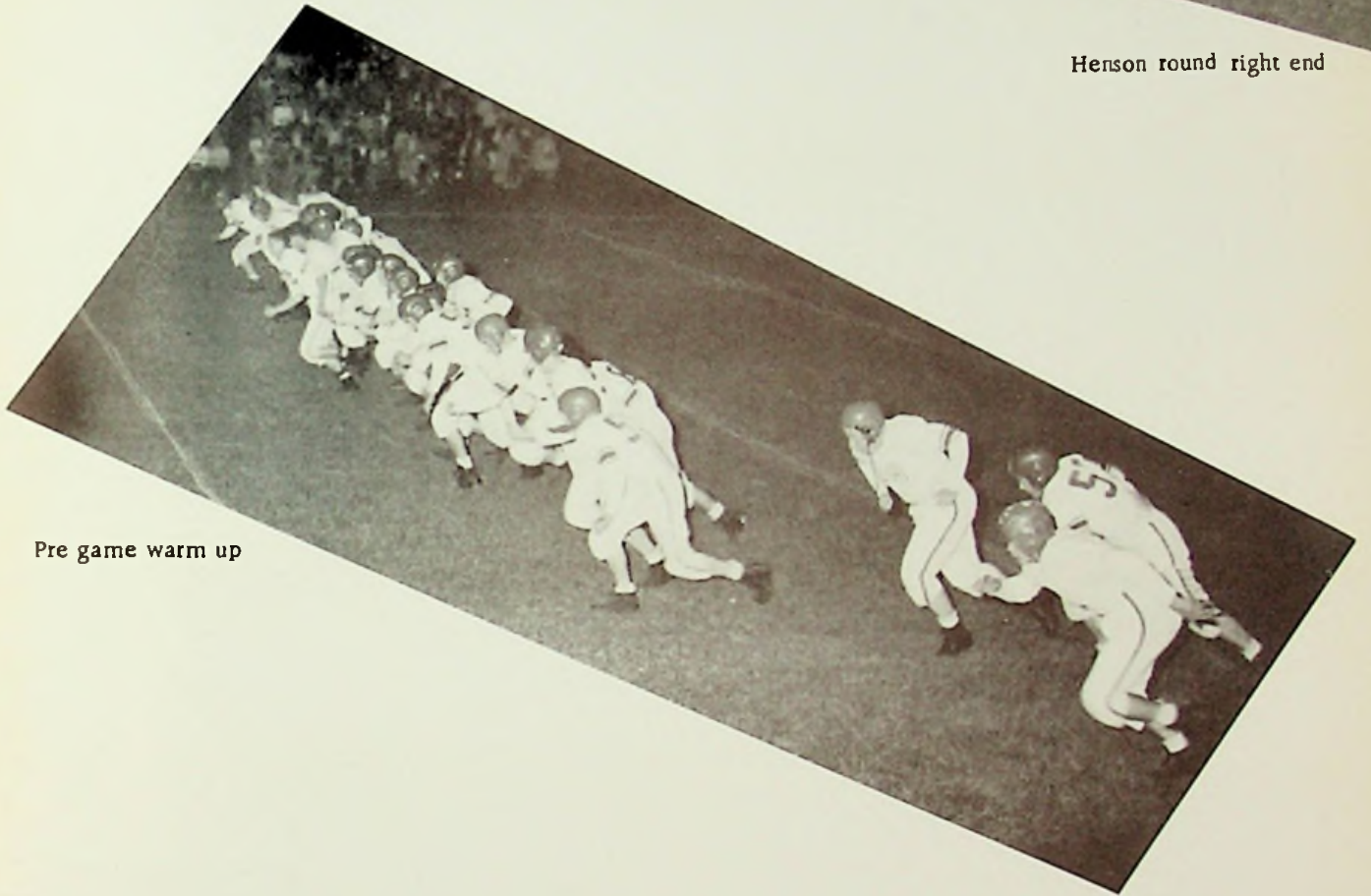


Ready 1! 2! 3!





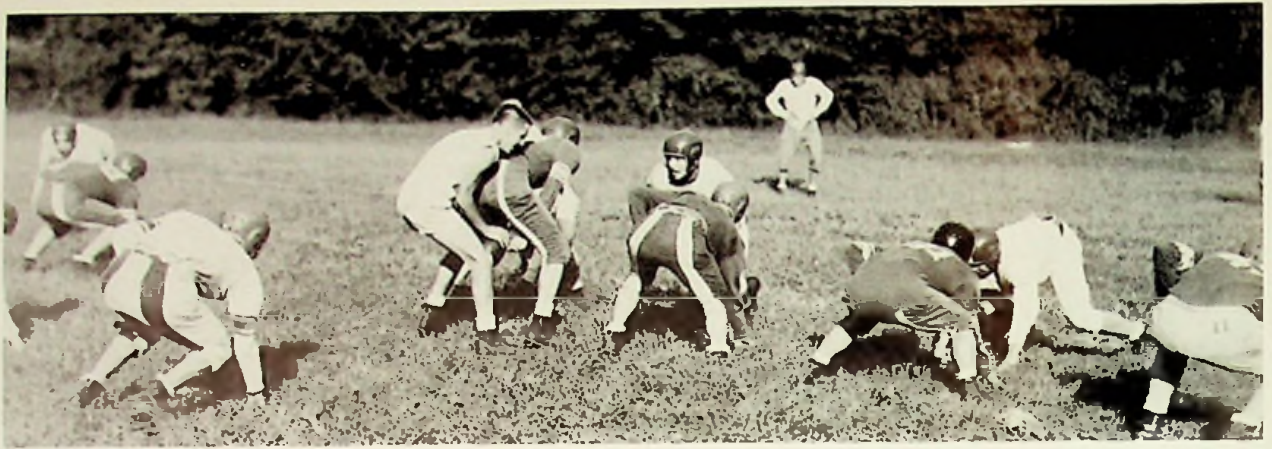
Henson round right end



Pre game warm up



Eyes on the game



Calling Signals

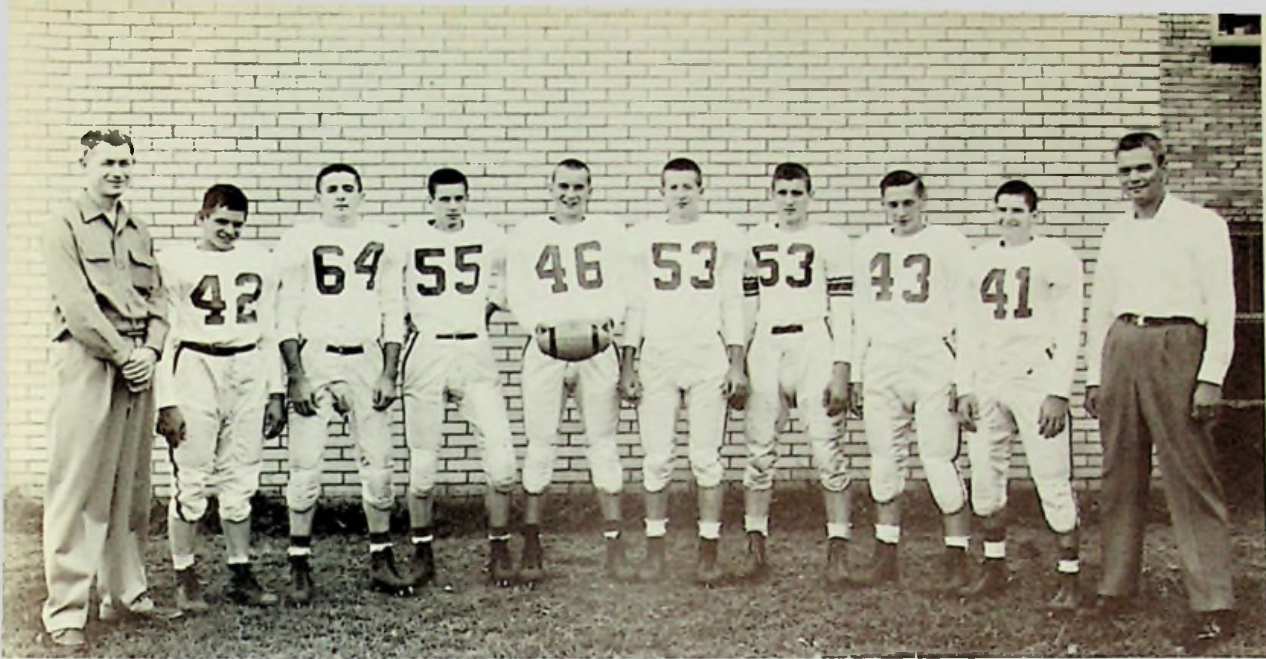


Mad Tussle



Line 'Em Up

SENIORS



Left to right---H. Schomburg, R. Burke, J. Henson, R. Deemer, B. Jenkins, G. Sergent, J. Nichols, J. Essman, M. Kinker, B. Pogue.

| | | | |
|---------|-------|--------------|-----|
| East | 13 | Wellston | 12 |
| East | 0 | Hillsboro | 20 |
| East | 13 | Wheelersburg | 0 |
| East | 19 | New Boston | 20 |
| East | 32 | Fairland | 0 |
| East | 18 | Waverly | 7 |
| East | 41 | Notre Dame | 7 |
| East | 13 | Washington | 26 |
| East | 51 | Chesapeake | 0 |
| <hr/> | | <hr/> | |
| Total | 200 | | 90 |
| Average | 22.22 | | 10. |



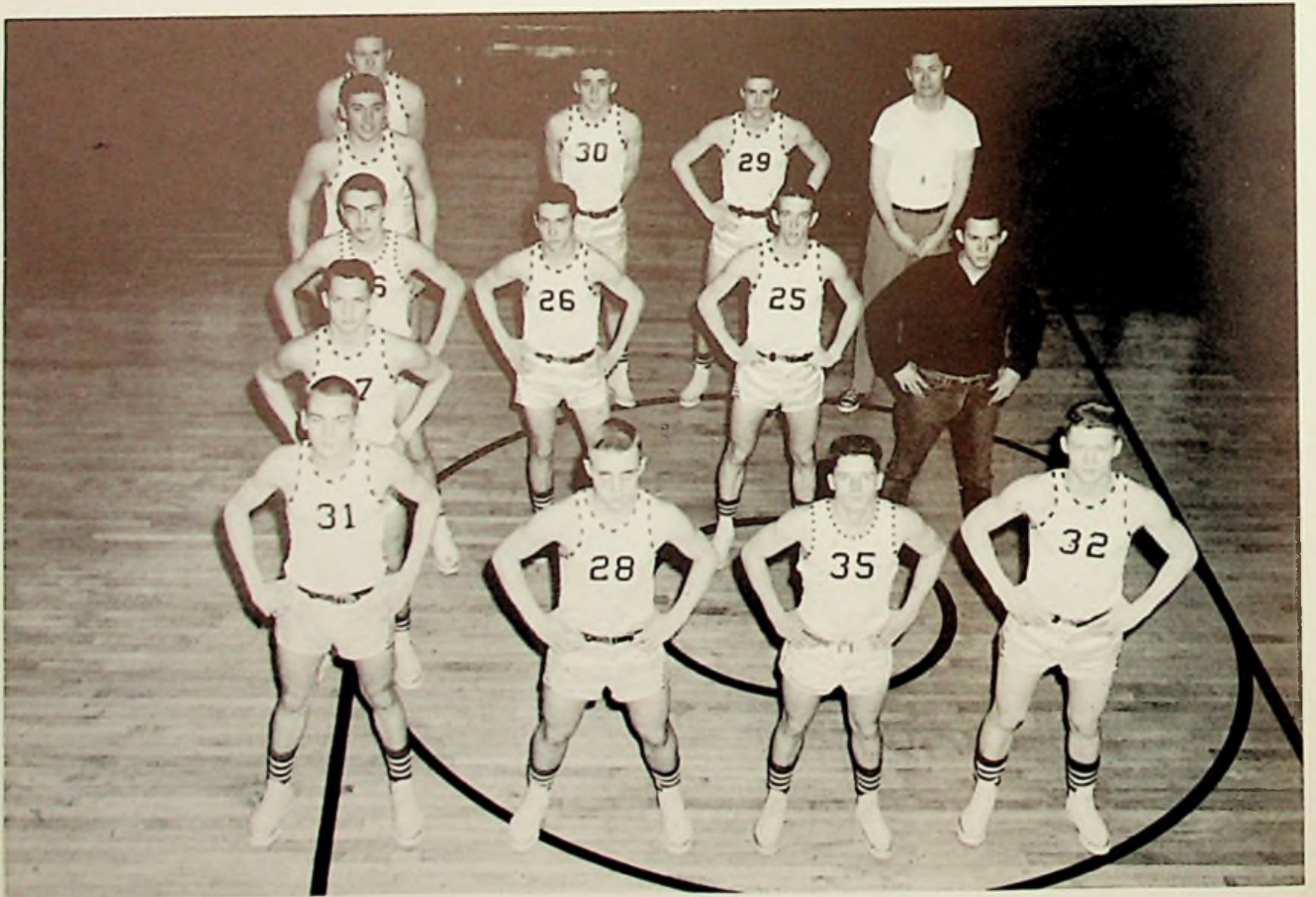
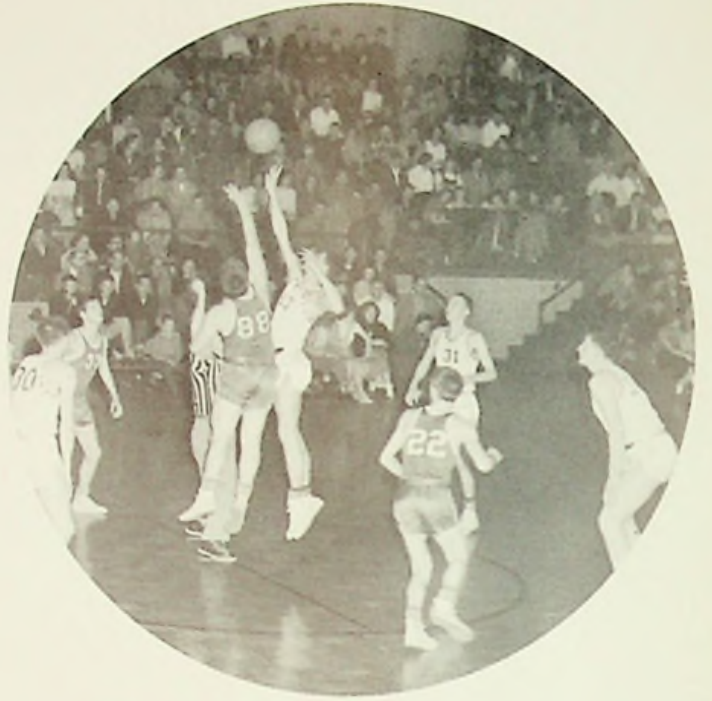
EAST HIGH SCHOOL TRATANS BASKETBALL SCHEDULE

| Team | Score | |
|---------------|-------|------|
| | East | Opp. |
| McDermett | 81 | 63 |
| Notre Dame | 68 | 41 |
| South Ports. | 72 | 35 |
| Stockdale | 77 | 63 |
| Piketon | 91 | 63 |
| South Point | 90 | 70 |
| Minford | 54 | 62 |
| Waverly | 56 | 60 |
| Washington | 84 | 56 |
| Chesapeake | 78 | 70 |
| Wheelersburg | 92 | 81 |
| Greenfield | 74 | 70 |
| Clay | 80 | 59 |
| New Boston | 69 | 49 |
| South Webster | 80 | 61 |
| Notre Dame | 89 | 52 |
| Ironton | 67 | 61 |
| <hr/> | | |
| TOTAL | 1313 | 1014 |
| | | |
| Tournament | | |
| Pomeroy | 102 | 63 |
| Hillsboro | 64 | 53 |
| Chillicothe | 55 | 60 |
| <hr/> | | |
| TOTAL | 226 | 181 |





VARSITY BASKETBALL STARS AND COACH





ROW I: J. Henson, R. Deemer, R. Logan, J. Hoskins, J. Withrow, P. McCardle. ROW II: Coach Schomburg, R. Boyd, B. Benson, B. Rowe, J. McGlone, B. Jenkins, B. Knowles, Manager Belloat.

| Name | Field Goals | Foul Shots | Total |
|----------|-------------|------------|-------|
| Henson | 209 | 98 | 551 |
| Jenkins | 123 | 61 | 303 |
| Deemer | 87 | 22 | 198 |
| Rowe | 86 | 75 | 258 |
| Withrowe | 43 | 24 | 106 |
| Knowles | 20 | 14 | 54 |
| McGlone | 12 | 10 | 34 |
| Benson | 5 | 4 | 14 |
| Boyd | 3 | 3 | 9 |
| McCardle | 1 | 1 | 3 |
| Logan | 0 | | 0 |
| Hoskins | 0 | | 0 |
| <hr/> | | | |
| Total | | | 1539 |



RESERVES



Left to right-J. Shoemaker, D. McClurg, L. Harr, W. McFarland, B. Ogg, J. Miller, N. Glascock, B. Lewis, D. Hacker, R. Preston.

S. O. C. (Southern Ohio Conference Champs)

CHAMPS



Reserves in Action



Skull Practice



Don



Bill



Willie



Dick



Butch



Ron, Manager



Jerry



Bob



Rob



Noel



Larry



Joe



'53 BASEBALL SQUAD

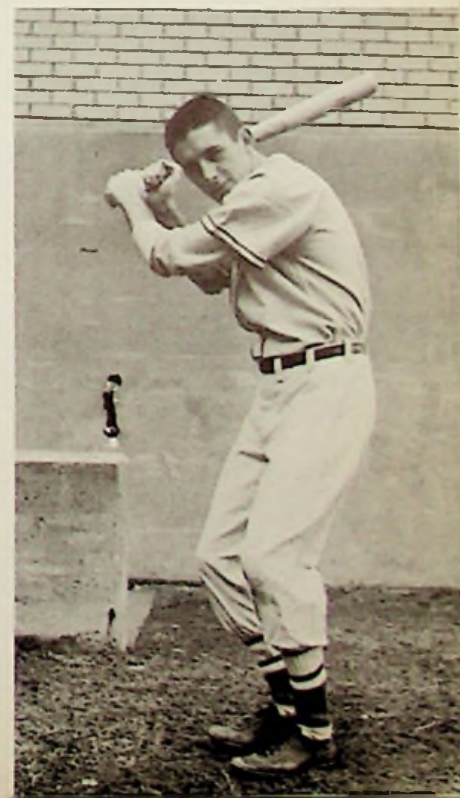


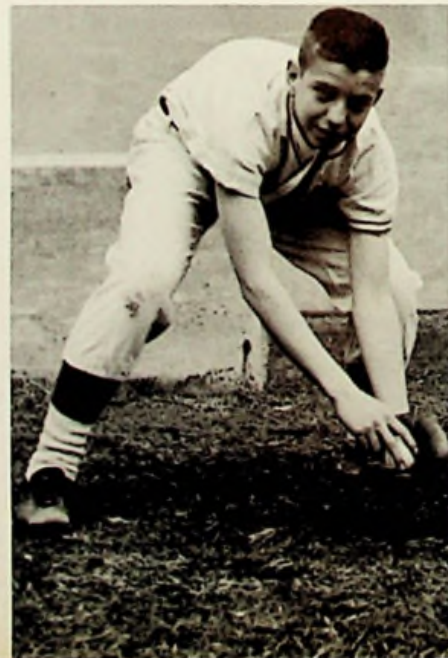
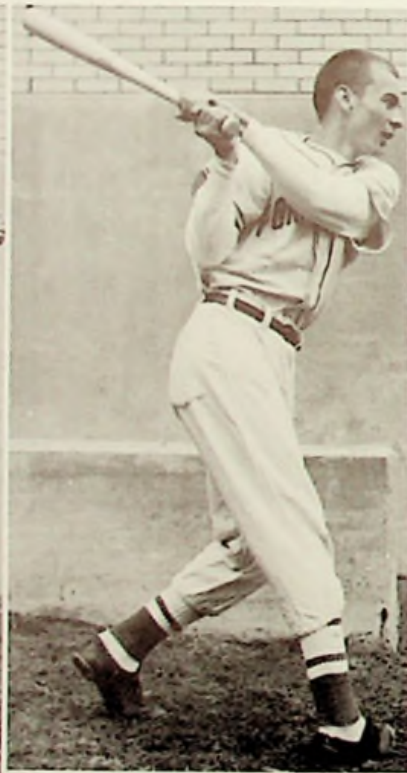
R. Deemer, J. Withrow,
P. Stanley, B. Jenkins, R.
Sturgill, P. McCardle, J.
Henson, D. Hutchins, B.
Knowles, B. Lewis, D.
McClurg, J. Shoemaker,
R. Boyd, L. Atkins, B.
Kitchin, F. Jarrells, R.
Blackburn, R. Felts, B.
Wilson, M. Kinker, G.
Willis.





'53
BASEBALL
SQUAD





BASEBALL PLAYERS

Larry Atkins
Butch Stanley
Joe Shoemaker
Bob Lewis
Ray Boyd

Ron Sturgill
Ben Jenkins
Jerry Withrow
Dick McClurg
Pat McCardle

CULTIVATED





Associate Editor; Ruth Beadle, Advisor; Helen Taylor, Editor; Dot Kline, Senior Editor; Rovena Coriell.



Business Managers-JoAnn Castle, Phyllis Holt.

Sports Editors-Don Bussey, Ben Jenkins



Typists-Nina Saunders,
Carol Knigge



Photographers-Rhetha Massie, Polly Ashworth, Sue Hehl.

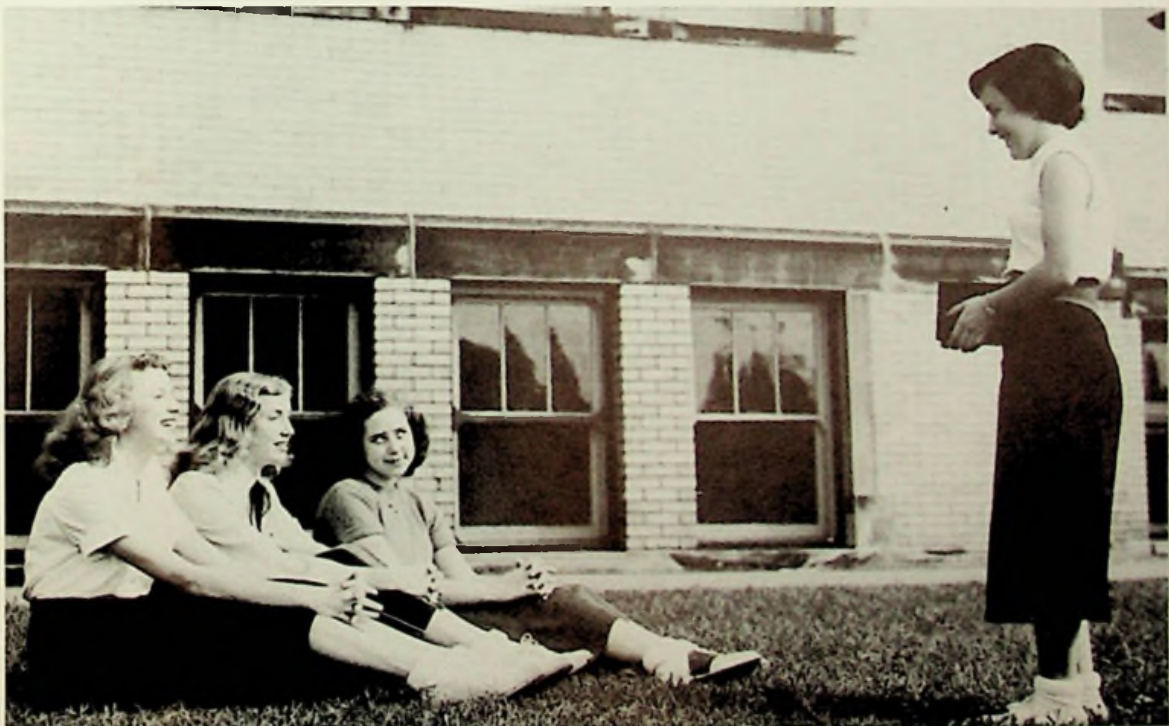
Artists-Richard Dudit, Jim Stockham, Gary Sargent.



Activities Editors-Mima Taylor, Jean Booten, Herma Cabiness



School Life Editors-Sue Sennett, Aulive Horner, Lena Brigner, Jane Thompson.





Collectors-Pat Conley, Martha Miles, Rosemary Russell, Helen Smith, Clementine Parker, George Beloot, Geloma Spearry, Evelyn Brown, Joyce Minter, Evelyn Jenkins, Geneva Fields.



Ads- Larry Atkins, Bob Rowe, John Warneke, Don Conklin, Jim Rose.



JUNIOR AND SENIOR GIRLS' GLEE CLUB

ROW 1: P. Butler, G. Spearry, N. Saunders, B. Welch, P. Kline, H. Cabiness, R. Chamberlain. ROW 2: B. Dodds, W. Thompson, R. Percell, J. Plummer, F. Burke, R. Blankenship, N. Robbins, D. Kline, V. Rudd. ROW 3: M. Taylor, S. Chamberlain, S. Ogg, F. Burke, M. Stout, D. Williams. ROW 4: M. Davis, D. Hickman, S. Benner, W. Johnson, B. Sayers, D. Smith.



FRESHMAN - SOPHOMORE GIRLS' GLEE CLUB

ROW 1: J. Basham, D. Ervin, D. Keaton, P. Hood, M. Huestis, P. Evans, P. Mershon. ROW 2: P. Redman, N. Gregory, S. Thompson, N. Sperry, J. Walker, J. Spense, J. Ruley, F. King, J. Smith. ROW 3: B. Powell, G. Partridge, B. Dudit, J. Jordan, R. Ratcliff, R. Bradbarry, S. Hoskins, J. Phillips, W. Hanes. ROW 4: R. Williams, W. Reed, M. Moore, M. Baer, E. Moyer, C. Smith, M. Johnson, N. McKelvey. ROW 5: G. Boggs, C. Williams, B. Kitchen, S. Plummer, M. Young, K. Whitt, W. Hayden, J. Gallion. ROW 6: B. Christy, J. Howard, B. Tomlin, M. Burke, S. Gill, P. Withrow, G. Compton, G. Goodman, W. Phillips, Mrs. Basham. ROW 7: C. Walker, R. White, H. Nagle, V. Coriell, M. Gammon, W. Fitch, J. Faine, C. Smith, F. Howell, J. Gee.



BOYS' GLEE CLUB

ROW 1: R. Duduit, B. Benson, B. Felts, H. Roberts, D. Bussey, R. Boyd. ROW 2: R. Dever, J. Schneider, R. Frazee, B. Jenkins, R. Will, R. Miller. ROW 3: D. Fugitt, J. Hoskins, J. Withrow, L. Smith, R. Noxel, G. Hanes. ROW 4: L. Atkins, M. Kinker, D. Bussa, J. Shoemaker, L. Wilson, J. Hensley. ROW 5: P. McCardle, R. Burke, D. McClurg, R. Lewis, L. Crawford, Mrs. Basham.



Juanita Crabtree



Martha Burke



Rhetha Massie,
Head Majorette



Cynthia Mucha



Janet Phillips



EAST HIGH BAND



John C. Stevenson
Hi-Y Advisor

The Hi-Y had several projects for the year. The main one being the queen and her attendants and the sponsoring of the homecoming dance. The officers for the Hi-Y Club were Buren McLaughlin --- president; Bob Rowe --- vice-president; Ben Jenkins --- secretary;; Don Bussey --- treasurer; and Lloyd Preston --- chaplain.

ROW 1: B. Jenkins, C. Reed, J. Hoskins, M. Kinker, R. Felts, J. Brock, T. Davis, J. Warneke. ROW 2: B. McLaughlin, P. Stanley, G. Sergent, L. Preston, J. Nichols, R. Duduit. ROW 3: D. Conklin, R. Hood, R. Will, R. Boyd, R. Rowe, G. Bailey, L. Harr, B. Ogg, B. Bussey, L. Atkins, A. Jones, L. Powell, J. Johnson, D. Bussey.



TRI-HI-Y OFFICERS

President
Dot Kline
Vice-President
Herma Cabiness
Secretary
Rhetha Massie
Treasurer
Lena Brigner



TRI-HI-Y MEMBERS

ROW 1: D. Kline, H. Cabiness, R. Massie, L. Brigner, P. Kline. ROW 2: J. May, G. Fields, P. Conley, C. Knigge, N. Saunders, G. Spearry, R. Coriell, E. Jenkins, P. Lowe, R. Ketter, M. Davis, M. Taylor, V. Grashel, R. Young, D. Winters, R. Beadle.



L. Davis, G. Fields, R. Young, D. Winters, P. Kline, E. Jenkins, V. Grashel, G. Spearry, R. Ketter, P. Lowe, N. Saunders, R. Coriell, J. Mays.



Rev. Scott, Miss Taylor



Rev. Scott delivering the address



Initiation ceremony begins. D. Kline, B. McLaughlin, Rev. Scott, H. Cabiness, R. Rowe, R. Massie, L. Preston, L. Brigner, D. Bussey.



LIBRARY



Librarians-Bob Knowles, Rufus Logan, Glenda Etterling, Evelny Brown, Rosemary Russell, Sue Hehl, Joyce Minter, Erma Campbell, Gladys Stewart, Dottie Hehl, Kathryn Warner, Evelyn Jenkins, Not pictured-Betty Chamberlain, Evelyn Moyer, Pat Conley.

JUNIOR-SENIOR PROM

1952



G. Niemer, A. Stevens, J. Rose, J. Etterling, C. Felty, R. Miller, H. Aeh, J. Warneke, G. Sergent, B. Rowe, D. Conklin, A. Jones, L. Atkins, G. Withrow.

A. Horner, H. Smith, S. Sennett, S. Manley, P. Nardi, C. Knigge, N. Saunders, J. Thomas, P. Evans, S. Torges, B. Wilson, E. Seth, B. Askin.



Waitress's---R. Young, L. Gilpin, D. Hickman, L. Davis, W. Hacker, K. Bussa, M. Williams, P. Boggs, B. Dodds, S. Benner, D. Winters, R. Ketter, P. Kline, P. Lowe, T. Shonkwiler.

B. McLaughlin, R. Massie, J. Faris,
H. Cabiness, R. Dudult, J. May, G.
Lantz, S. Christy, R. Coriell, L.
Brigner.



Ready for the big dance. J. Faris,
H. Cabiness, R. Massie, B. McLaugh-
lin.

R. Dudult, J. May, R. Deemer, P.
Holt, J. Henson, D. Bussey, P. Con-
ley, B. Jenkins, W. Hoskins.





HI-Y TARTAN

The school paper (formerly the Highlander) was taken over by the Hi-Y Club and was renamed the Hi-Y Tartan. It was published every month.

The staff consisted of 18 students.

Co-Editors Buren McLaughlin & Bob Rowe

Reporters Don Bussey, Ben Jenkins, Ruth Beadle,
Herma Cabiness, Rhetha Massie, Sue Hoskins, Pat Kline,
Dot Kline, Bill Ogg, Leonard Powell, Cynthia Mucha, &
Rachael Young, John Warneke.

Typists Jo Ann Castle & Janie Thompson

Artists Richard Duduit, Gary Sergent



Each year the Junior Cup is presented to a student in the junior class who has made outstanding contributions to both school and class. Citizenship, leadership, co-operation, scholarship and athletics are some of the things considered when selecting a winner. Dot Kline was presented this cup for the 1952 school year.



OUR QUEEN-PHYLLIS HOLT



Senior Attendant
Dorothy Kline



Junior Attendant
Sally Ogg



Sophomore Attendant
Janice Faine



Freshman Attendant
Barbara Christy

F. H. A.



President Judy Plummer
1st. vice-President Carol Weaver
2nd. vice-President Janice Walker
Secretary Rosalie Percell
Treasurer Doris Keeton
Historian Betty Tomlin .

The Home Economics Club is an organization for any high school girl who is enrolled in home economics or has had one year of it. The club was organized to create an interest in the various fields of home ec., and to enable the girls to better meet the problems which will confront them in the home or in their chosen careers.

The club was organized September 28, 1952, and boasts of 28 charter members. The highlights of the years activities were the fall picnic, first annual Christmas party, sending toys and clothing to the "Toys for Every Kiddie Campaign", skating party and the spring tea for the 1953-54 freshman girls. Members of the club are: Cora Caldwell, Shirley Percell, Imogene Crisp, Anna Rose, June Howard, Betty Tomlin, Helen Nagle, Betty Bobst, Ruth Logan, Barbara Sparks. Row 2 Miss Beoddy, Judy Plummer, Doris Keeten, Jane Galion, Nicki Hutchinson, Rosemary Blankenship, Cora Hammonds, Pat Carley, Carol Weaver, Janice Walker.



GIRLS' LEAGUE OFFICERS

President JoAnn Castle
 Vice-President Regina Booten
 Treasurer Rovena Coriell
 Secretary Geloma Sparry

All girls' assembly with Dr. Madeline Fiel of Marshall as guest speaker.



Dr. Fiel and a group after the assembly



CHEERLEADERS



D. Winters, B. Bolton, G. Lantz, V. Welch.

Senior Cheerleaders: G. Lantz, B. Bolton.



Reserves: C. Walker, N. Crabtree.

SENIOR ASSEMBLY



Class prexy -- Buren McLaughlin



Senior Quartet: Dot Kline, Ruth Beadle, Dot Kline and Herma Cabiness.



D. Dudit, L. Atkins, A. Jones, M. Kinker, J. Warneke, G. Sargent, B. Rowe, B. Jenkins, D. Bussey.



"Christmas Promise" J. Essman, J. Booten, M. Kinker, J. Castle.

JUNIOR CLASS PLAY



Cast of Characters

Corliis Archer — a teen-age girl Phyllis Lowe
 Mr. Archer — her father James Hurst
 Mrs. Archer — her mother Patty Kline
 Louise — the Archers' maid Nora Robbins
 Mildred — Corliis's best friend Kay Buss
 Dexter Franklin — the boy next door John Johnson
 Mr. Franklin — Dexter's father Roy Stevens
 Mrs. Franklin — his mother Rachel Young
 Cousin Agnes — on Mrs. Archer's side Lily Harrison
 The Doctor — from the insurance company Donna Winters
 Betty — another girl friend Sally Or
 A Nurse — from the hospital Shirle

Synopsis

Act I: Early evening
 Act II: About two hours later
 Act III: Two weeks later. Just before dinner.

Place: The Archers' back porch
 Time: The present. Spring.



Committees

Program: Don Evans, Bob Knowles
 Tickets: Miss Heer, Dolores Hickman, Phyllis Butler, Gary Hanes, Richard Hood, Wanda Hacker, Andre Keller
 Publicity: Patricia Boggs, Wanda Fitch
 Stage Crew: Mr. Donley, Rufus Logan, Bob Knowles, Wilbur Harr, Marvin Chamberlin, Ronald Benson, Joe Chamberlin, Don Johnson, Howard Jarrell
 Sound Effects: Don Evans
 Properties: Ray Brown
 Make-Up: Miss Mildred Bailey
 Prompter: Lenore Gilpin
 Properties: Mary Davis, Phyllis Butler, Dolores Hickman, Wanda Hacker, Florence Fyffe, Patricia Boggs, Wanda Johnson, Melba Williams
 Sets and Musical Selections: Don Johnson, Roberta Ketter, Andre Keller, Lenore Gilpin

Acknowledgements

Covert Furniture Company
 Superior Television
 Friends and Faculty of East High School
 Produced by special permission of the
 Dramatic Publishing Company

PAULINE WALDEN CHAPTER NATIONAL HONOR SOCIETY



Left to right: Roberta Ketter, Lena Brigner, Rhetha Massie, Mima Taylor, Herma Cabiness, Joe Essman, Buren McLaughlin, Bob Rowe, Patty Kline, Donna Winters, Rachel Young, Miss Walden, Mr. Stevenson. Seated: Miss Taylor, Ruth Beadle, Dorothy Kline, JoAnn Castle.



Miss Walden delivering the address after the tapping ceremony.

Tapping a new member.

New members being initiated in a candlelight ceremony.





“YOU CAN’T KISS CAROLINE”

Maureen Daly

| | |
|--------------------|------------------|
| Milt | Larry Atkins |
| Howie | Max Kinker |
| Joe | Ben Jenkins |
| Caroline | Rhetha Massie |
| Shirley | Herma Cabiness |
| Suzie | JoAnn Castle |
| Willie | Raymond Will |
| Johnnie | Angus Jones |
| Pat | Martha Miles |
| Ma Rand | Rovena Coriell |
| Jeanette | Aulive Horner |
| Miss Jameson | Carol Knigge |
| Sally | Nina Jo Saunders |
| Bunny | Ruth Beadle |
| Stanley | Dick Duduit |

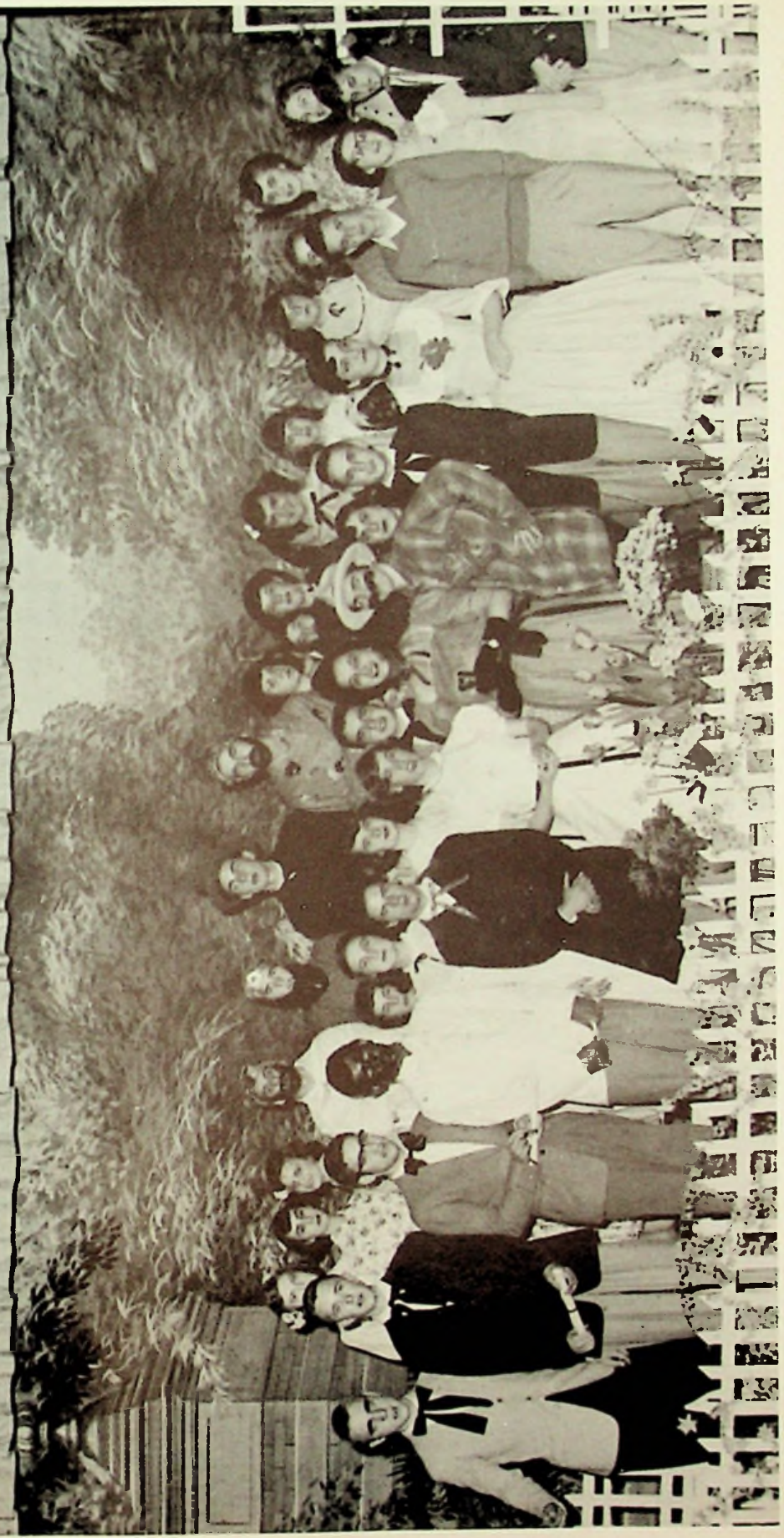
SYNOPSIS OF PLAY

Caroline was no ordinary girl. During the two weeks she had been at East High she had broken every rule. She never went to Ma Rand's Drug Store, where the rest of the gang hung out, she was out watching birds.

She had all the guys trying to date her but they didn't have any success. Joe finally succeeded in getting a date and the rest of the gang (Milt, Howie, Johnnie, Willie, and Stanley) bets him that he can't kiss Caroline. The rest of the girls are jealous because of the attention Caroline is receiving (Shirley, Pat, Bunny, and Jeanette). Caroline's little sister, Suzie, spills the beans and that is where the fun began.

The play was presented May 14 and 15. Miss Taylor directed the production.

EHS



EAST HIGH OPERETTA "IN AN OLD KENTUCKY GARDEN" March 27, 1953



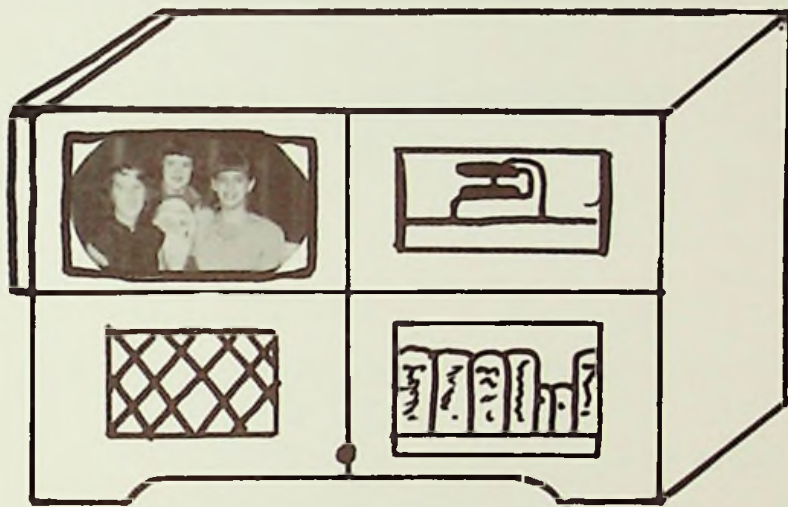
Mr. Shock and Typing II



Spanish I

SEA CLEAR

ZD-U-V-UM-1



Advertising

by LARRY ATKINS
DON CONKLIN

Compliments Of

STANLEY THEATER

Compliments Of

COOPER BROS.

Corner of Gallia And Harrisonville
New Boston, Ohio

Our Very Best Wishes

SHERMAN HIBBITTS AND SON

Phone 36-G

212 Harding

NEWBERRY BROS.

Sporting Goods

Clothing

4150 Gallia St.

New Boston, Ohio

Phone Bos. 38

Diamonds

Watches

**ZOELLNER
Jewelry Co.**

Third and Chillicothe
Portsmouth, Ohio

LOWELL CAUELLY

Grocery & Meats

Corner of Harrisonville & Steling
Portsmouth, Ohio

BROWNS GARAGE

Painting - Body Work - Auto Repairing

1531 Harrisonville Ave.
Phone Bos. 43-X

HERFF - JONES

Manufacturing Jewelers & Stationers

**1407-1419 North Capitol Avenue
Indianapolis 7, Indiana**



MILLHUFF'S

Best Wishes To The Class of '53

Modern Self-Service Grocery

If We Serve You - You Serve The Best

*Compliments
of*

**KILGALLIN
BARBER SHOP**

Gallia Street

S. T. KINYON & CO.

Excavating

Bull Dozing

Equipment Rental

411 Harding Avenue
Sciotoville, Ohio
Phone Scioto 242

**SMITH'S T. V.
SHOP**

Superior Television
Philco - Crosley - Sylvania

5604 Gallia Street
Phone Scioto - 305

ONE DAY REPAIR SERVICE

*Compliments
of*

DOCTOR MOORHEAD

THE AUTOMOTIVE SUPPLY CO.

Distributors

Mobilgas

Mobiloil

General Tires

*Compliments
of*

**KAZEE JEWELRY
STORE**

218 Harding Avenue

*Compliments
of*

**Johnson's
Green House**

Flowers for every occasion

GILL FUNERAL HOME



Ambulance Service

Phone 100

Sciotoville, Ohio

Jessie Gill

Thomas Gill

*Compliments
Of*

CHABOUDYS FOOD MARKET

Corner of Gallia and Eastern

DUVENDECKS

5619 Gallia Street

Wallpaper

Paint

Quality - Service - Courtesy

LAKEVIEW CLEANERS

5710 Gallia Street
Phone 229-W

Wallace "Fat" Bryan

HIBBOTTS

Hardware Company

315 Harding Avenue

*Compliments
of*

**CLIFF JONES
MOTOR SERVICE**

5737 Gallia
Phone - Scioto 9

*Compliments
of*

SCIOTO MOTEL

5079 Gallia

**COEY'S
BARBER SHOP**

241 Harding Avenue

*For a Gift you'll
Give With Pride Let
Your Jeweler be Your Guide*

Schulers Jewelry Shop

Theater Building
Phone Scioto 310

*Compliments
of*

DINSMORE NASH

5605 Gallia Street

**Always Call
the**

H. LEET LUMBER CO.

for
Coal - Paint - Lumber

**EVANS TV &
APPLIANCE CENTER**

**Admiral G. E.
Emerson Television
John Evans - Owner**

5720 Gallia Street

*Compliments
of*

SCIOTOVILLE CLEANERS

**Under New Management
by
Walter & Frances Turner**

ATLAS FASHIONS

*Compliments
of*

SCOTT'S SPORTING GOODS

Everything For The Sportsman

822 6th Street
Portsmouth, Ohio

Compliments of

EAST HIGH BOOSTERS CLUB

John Fuggit - President
Paul Adams - V. President

William Richards - Treas.
Ed Pogue - Secretary

*To you who made the grade
Congratulations, Class of '53!*

Marting's

Portsmouth, Ohio

*Compliments
Of*

BRAGDON'S

Portsmouths Friendliest Store

*Compliments
Of*

**ANDY MUCHA'S
Grocery**

5900 Farney

Phone - Scioto 62-N

SNACK SHOP

Lunch

Jim & Eunice

French Fries

Sandwiches

**5730 Gallia Street
Sciotoville, Ohio**

SELECT DAIRY

Ph. 3-3381

*"The best
Dairy Products"*

JOHNSONS BROS. GROCERY



Corner of Harding and Mayo

"A good store for a good community"

Compliments of

BEN STEWART

Original Cut Rate

STEWART'S DRUG STORE

Prescription Specialists

904 Gallia Street

Portsmouth, Ohio

Phone 2447

Compliments of

SELBY SHOE STORE

Compliments of

GRAF LUMBER COMPANY

Bahner Road
Phone Scioto 169-L

Fine Diamonds

Carr's Jewelers

811 Gallia

Fine Watches

*Compliments
of*

Gilpins Dairy

*Compliments
of*

**Longs Furniture
Company**

Phone 921-L

**Chrysler - Plymouth
Sales and Service**

Let Your Car Worries Be Ours

WHEELERSBURG MOTOR CO.

Gallia Street and Hayport Road
Phone Scioto 272

*Compliments
Of*

Huston-Pontiac Co.

Gallia-Lincoln-Ninth Street
Phone 2-2951 or 2-2961

*Compliments
Of*

**PORTSMOUTH INTERSTATE
BUSINESS COLLEGE**

Portsmouth

Ohio



Congratulations Graduates

The establishment, growth and development of industry in Scioto County is an example of our American system of free enterprise.

The expansion of Detroit Steel Corporation, which includes the construction of a complete new steel mill right at your own doorstep, is an example of the confidence of one company in the FUTURE of our system of free enterprise.

Your career after graduation will develop in a nation whose progress is a direct result of its freedoms so that you and the steel mill have an opportunity to GROW AND TO DEVELOP in a land of opportunity.

Guard your freedoms well and may your future be crowned with SUCCESS.

DETROIT STEEL CORPORATION

PORTSMOUTH DIVISION

PORTSMOUTH, OHIO

SAMUEL LEVI & CO.

Furniture

840-844 Gallia Street
Next to Laroy Theater

"Shop Lewis - Save Money"

Congratulations Graduates

**When in Portsmouth Visit
STAPLETON OFFICE**

**Supply Company
School Supplies**

Dial 3-2731

829 Sixth St.

Courtesy and Service

*Compliments
of*

EVANS FLORAL

Wheelersburg, Ohio
On Route 52

KOPY KAT INC.

Ladies Ready to Wear

509 Chillicothe St.
Phone 23851

WOLF

Clothes For Dad and Lad

**Comparison Proves
Roberts' Values Greater**

ROBERTS

The Diamond Store

421 Chillicothe St.

DEEMER'S MARKET

3502 Gallia Street
New Boston, Ohio
Phone Bos. 200

Home Killed Meats

Groceries & Produce

KOBACHERS

*Compliments
Of*

**BOURGHOLTZER'S
Drugstore**

Harding Ave.

*Compliments
of*

SCIOTO CUT RATE

224 Harding Ave.

*Compliments
Of*

SCHOMBURG GROCERY

*Compliments
Of*

MUNNS SERVICE STATION

Harding & Winchester
Sciotoville

Best Wishes From

TURNERS SHOE REPAIR

Best Wishes From

**WINEBRENNERS
Service Station**

COVERT Furniture Company

Complete Home Outfitters

Phone Bos. - 34

3975 Gallia Street

New Boston, Ohio

Dean and Barry Paints
Superical Washable Wallpaper
Janitor Supplies

PORTSMOUTH PAINT CO.

928 Gallia Street

Say it With Flowers But Say it with Ours

HERMS FLORAL CO.

837-6th Street
Phone 31641

HAMBURGER INN

buy
em
by
The
Sack



buy
em
by
The
Sack

Get the Food That Makes You Glad that You are Hungry

CLASS HISTORY

In these closing days of our years in high school my assignment is to collect and record as many as possible of the noteworthy events and experiences with which my fellow classmates have had a part. This is the history for the Class of 1953.

Our graduation itself is the culmination of a chain of historical events which had led up to this most exciting period in our lives so far. This history of the individuals of the Class of 1953 is soon to flow into the great stream of human progress. While we write our class history every single one of us wishes you to know that we are grateful to our parents, teachers, friends, and to the community for making our school life possible.

Some think of history as a story of famous people or world shaking events. Who knows but that someone in this graduating class may be the famous person of tomorrow? Who knows but that one of our class will someday cause a world shaking event? To begin we tell what we have done in high school.

We entered East High in 1949 with a class of 145 strong. Class officers were elected the second six weeks in order to give us a chance to become acquainted with one another. It's hard to imagine that just four months earlier we had been rivals and that now we are banding together to become a part of the mighty East High Tartans.

Our Freshman officers included:

President Dottie Kline
Vice President Ray Boyd
Secretary Barbara Cooper
Treasurer Herma Cabiness

Our only money-making project for the year was a pencil sale that lasted almost the entire year.

Ben Jenkins represented our class in sports that year by playing Reserve Basketball. We had quite a few more boys playing freshman football and basketball. (If you can remember their names your better off than I am).

Betty Welch was elected to represent our class in the Homecoming Queen's Court.

In our second year at East the boys took the reins of our Class. Officers were:

President Dick Duduit
Vice President Gary Sergent
Secretary Lawrence Williams
Treasurer Bob Rowe

Twelve of our girls got a preview of the prom when they were selected to be waitresses. Oh yes, four of our boys previewed the prom too. Deemer, Henson, Jenkins and Christy, did a little hula dance that the juniors and seniors of 1951 will never forget. How could they?

This was also the year that our Reserves took the S.O.C. Remember? Buzz and his boys made a good showing that year.

Joan Belveal served as Queen Attendant our Sophomore year.

And then we were Juniors.

The officers went from one extreme to the other, this year the girls won out.

President Phyllis Holbrook
Vice President Dottie Kline
Secretary Regina Booten
Treasurer Rhetha Massie

The first project for the year was the concession stand at the football games. The faithful concessionaires sold: Hot-dogs, Pop, and Candy through rain, sleet, and snow. At least it would enable us to sponsor the Prom. The seniors of 1952 were happy.

We were well represented in sports our junior year. Jenkins, Deemer, Henson, Rowe, Knight, Boyd, Essman, Sergent, Parks, Burke, Sturgill, Bussey, Duduit, Kinker, Myers. All names that will go down in the Hall of Fame at East High. Our basketball team almost beat Portsmouth.

Thirteen wasn't an unlucky number for four of our girls, who on March 13, 1952 were elected into the Pauline Walden Chapter of the National Honor Society. The lucky girls were: JoAnn Castel, Phyllis Holbrook, Dot Kline, and Ruth Beadle.

Six other lucky girls were elected into the Tri-Hi-Y and approximately twenty of our boys joined the Hi-Y Club. Jeanie Booten represented our class as, Queen, Sue Manley's Homecoming Court.

Dottie Kline received the Delphic Literary Society's Junior Cup, which is given each year to the outstanding member of the junior class.

Our Class play was "Old Doc" a dramatic comedy based on the life of a country doctor. The cast, which included 9 girls and 6 boys, spent a great deal of time practicing, but the play was worth the effort.

The theme for the '52 prom was strictly colonial. This was the last big event of our third year in East High. Lou Martin's band provided the music. We met the debts, but we scrimped in order to leave a balance with which to start our yearbook. Even so, the seniors seemed to be pleased.

After Senior Day Commencement, and the Baccalaureate services in 1952, we looked forward to our Senior year rather hesitantly. We had enjoyed the past year so much that we didn't want our fun to end.

This year we are THE SENIORS!

Our class officers were:

President Buren McLaughlin
Vice President Bob Rowe
Secretary Lena Brigner
Treasurer Herma Cabiness

The faculty elected the following seniors into the Honor Society: Buren McLaughlin, Joe Essman, Bob Rowe, Rhetha Massie, Lena Brigner, Herma Cabiness, and Mima Taylor. This made a total of 10 seniors including three from last year that received this great honor.

We gave an assembly for the first time in three years on December 17, 1952. It was about time. The assembly featured a one act play and other musical selections.

Bob Rowe took the spotlight in the 1953 school year by winning the coveted A. Graves Williams Scholarship worth \$3,000. One of the few boys from East to win this honor.

Rhetha Massie took another first event for East when she came in second place in the "I Speak For Democracy" contest. This made the faculty and students very proud.

Seven girls were elected into the Tri-Hi-Y this year bringing the number of senior girls to thirteen. The Hi-Y and Tri-Hi-Y clubs sponsored the annual Easter services.

The basketball team almost reached the finals again this year, but we were tripped by a brilliant Chillicothe Team. We just hope that this next years team can match, and if possible, better the basketball record that our boys have helped acquire.

Phyllis Holt reigned as Homecoming Queen this year over the East vs. Waverly game. Queen Phyllis was elected by the student body and proved to be a queen that we were all proud of. The football team even pulled an upset to win the game for Phyllis and her court. Senior attendant was Dottie Kline.

This years class play was "You Can't Kiss Caroline", a three-act comedy written by Maureen Daly and adapted by Ann Coulter Martens. It concerned a gang of teenagers that loaf at the corner drugstore. Very much the same way we spend our time and money at Reese's Hamburger Inn.

It is a lot of fun to review the pleasant experiences of our days in high school. We must not dwell too much or too long upon the things which are of the past, though. These times cry out for fresh and bold decisions upon the problems of today and consideration of what lies ahead. To be alive in this great moment is something tremendous. The wonderful world of yesterday fades away. We are having a moment of pleasant reminiscence. Each has a small corner of the past to remember and we can think of the good and pleasant things about it forgetting for the time the hard work or the heartaches along the way.

We now turn our heads from the past to the future. This closes our high school life and we now turn our daydreams to things to come.

Miss Smith and Chemistry Class



Mr. Donley and Manual Training Class





The Class of 1953 receives their diplomas.

We change our tassels from left to right.



co
Tr
We
he
by
wi
by
we
lon
of
de
the
or
to



Commencement June 3, 1953.

