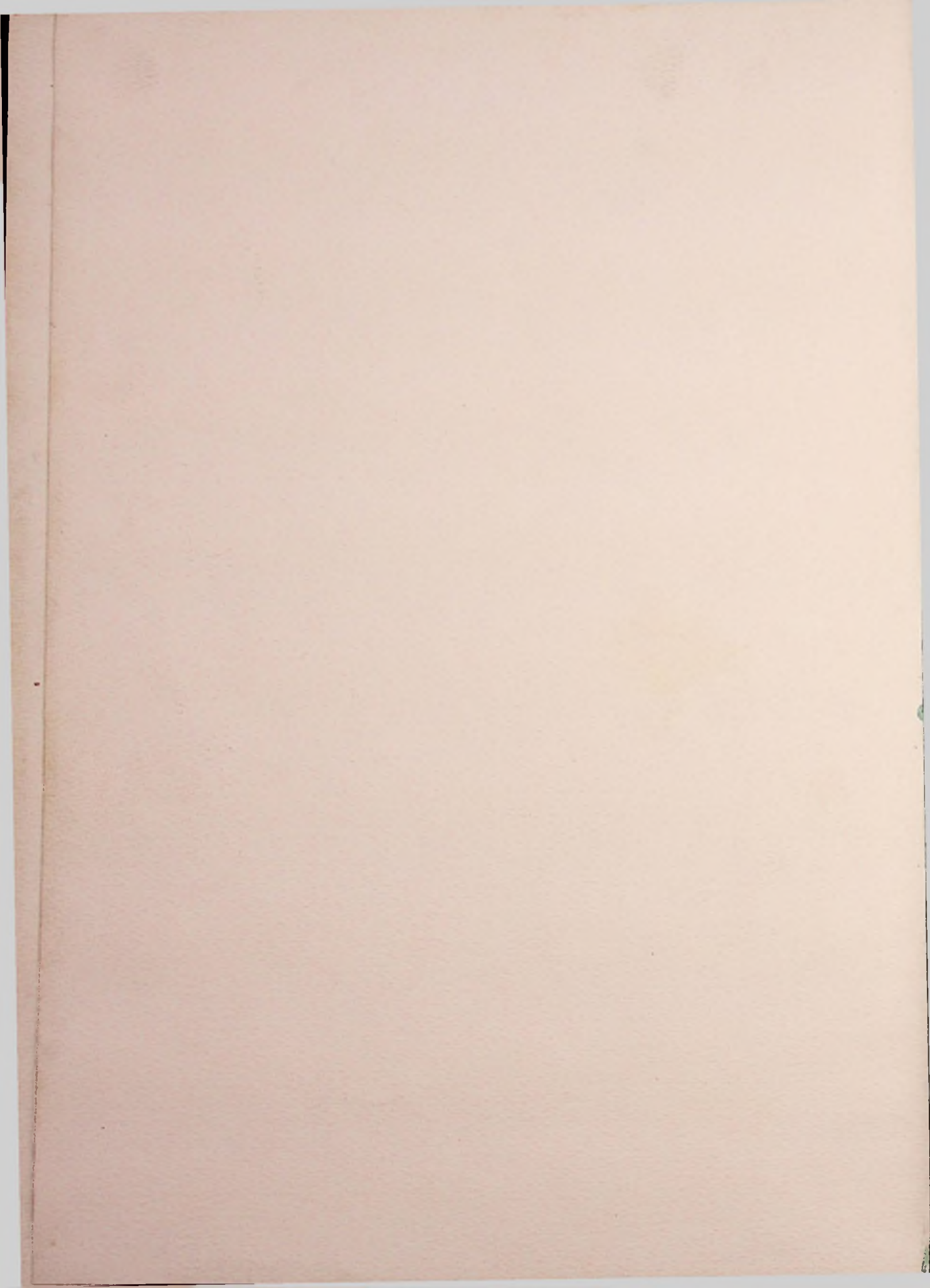




1914

Senatorian



The Senatorian

PUBLICATION OF WASHINGTON TOWNSHIP HIGH SCHOOL
NINETEEN HUNDRED AND FORTY FIVE







IN MEMORIAM



RAYMOND MAUK, 1940



WILLIAM COOLEY, 1941

DEDICATION

To the two alumni of our school and to the six former students who have given their lives in their attempt to give us—the generation of tomorrow—the many great freedoms of America, we express our gratitude and ever increasing appreciation.

We, the staff of the 1945 Senatorian, hereby dedicate this annual to all the brave men in the service from Washington High School who have made the supreme sacrifice in the service of our country.

RUSSELL SCHWAMBERGER

CARL HAZELBAKER

RAY TRAYLOR

RALPH DISTEL

BILL STRANG

BILL GOODMAN

Administration

Arma virumque
noque qui primis
Italiam pulso per
mit litora, me
terra





N. B. POTTS, County Superintendent of Schools



Board of Education — Washington Township

Left to right—Lowell Strickland; Charles Prince; Bessie Greene, Clerk;
George Jenkins, President; Roy Cunningham.



MR. ROLF, Supervising Principal



ALLENE AMBURG
Social Science



RUTH DAULTON
Home Economics



MARY BENNETT
Commercial



MARCELLA DONLEY
Latin



J. H. BOUTS
Pre-flight, Physics



DALE GILLETTE
Instrumental Music, Radio



DORIS COLE
English



JOHANNA KEAN
English, Chemistry



KATHRYN KEGLEY
Science, Spanish



AMY MITCHELL
English



RALPH KISOR
Physical Education



ELIZABETH RESSINGER
Social Sciences



RUTH MIGNEREY
Mathematics



FRED STAMM
Industrial Arts



MABEL STAMPER
Vocal Music



SCHOOL CALENDAR



Sept. 6 School opened to the joy of everyone.

Sept. 30 Freshman-Sophomore party. Kids do have fun!

Oct. 18 Assembly for new members of National Honor Society.

Oct. 20 First game of season—Green defeated.

Oct. 27 Carnival.

Nov. 3 Annual Staff chosen. Some stuff!

Nov. 8 All School Dance—Lou Martin's orchestra.

Nov. 9 Newsette staff selected.

Nov. 18 Band played at Clay basketball game. Jive music.

Dec. 6 First Every Pupil Test.

Dec. 22 Christmas All-School Dance.

Jan. 2 Motion picture machine purchased.

Feb. 16 Last home game. Dance with Minford as guests.

Feb. 23 Band concert. Good music!

Feb. 19-27 Basketball Tournament.

March 17 Senior Survey Test.

March 28 Every Pupil Tests! Again!

April 6 Junior Operetta—Hats off to the Juniors!

April 27 Scholarship Tests.

April 27 Junior-Senior Prom.

May 10 Senior Class Play.

May 6 Baccalaureate.

May 12 Commencement.

May 18 So long, students!



THE
Senior
CLASS



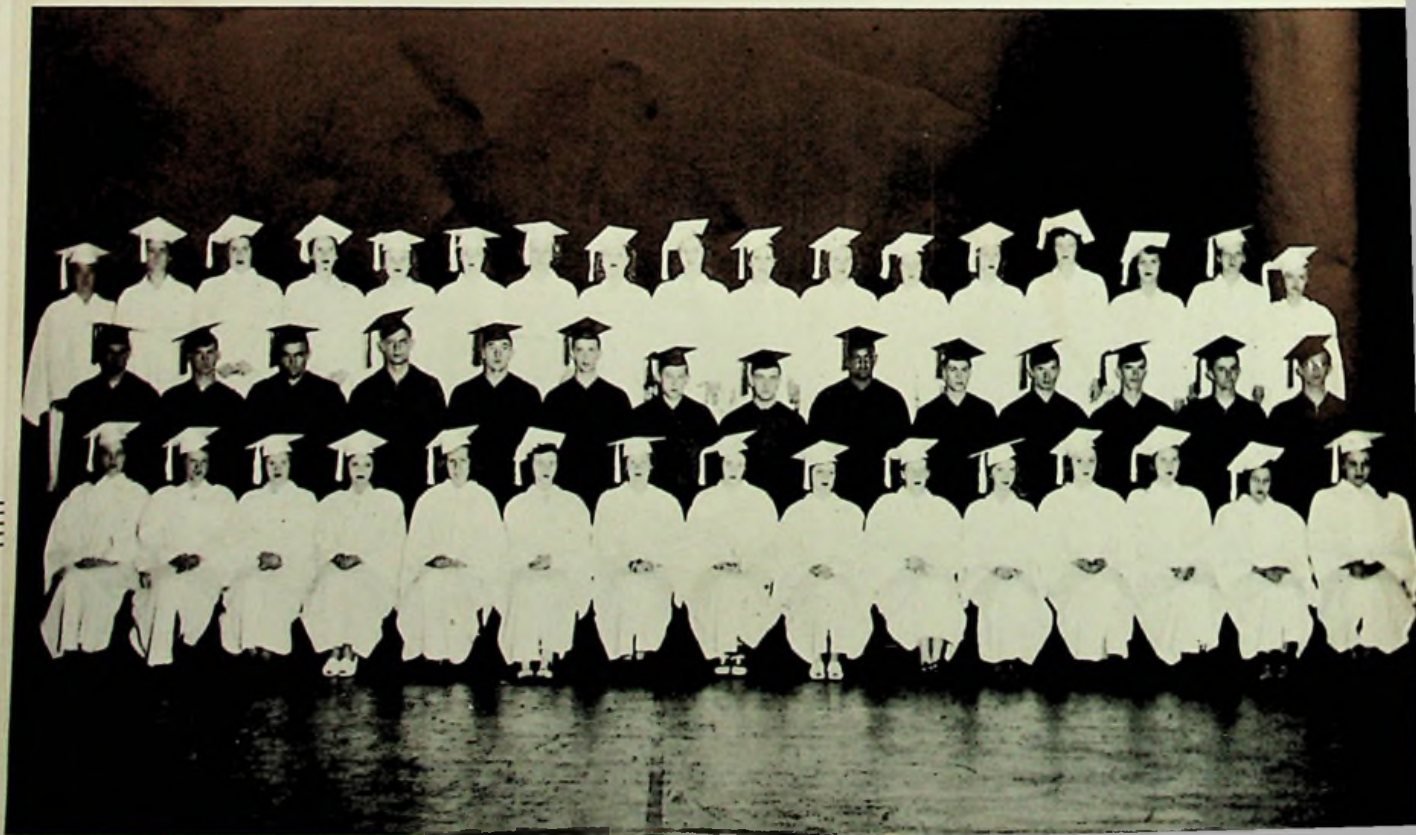


SENIOR OFFICERS

President, E. Smalley; V. President, J. Handel; Treasurer, H. Smith; Secretary, R. Patrick.

THE GRADUATING CLASS OF 1945

Bottom Row (L. to R.)—R. Liston, E. Shepherd, E. Blake, D. Weaver, M. Elmore, J. Moore, L. Meyers, M. Parker, M. Strickland, E. Mignerey, V. Jones, P. McGraw, E. Huston, B. Knauff, W. Boggs. Second Row—C. Lowe, C. Blosser, M. Jennings, H. Horsley, E. Smalley, E. Frasher, C. Bussa, C. Hall, F. Gardner, S. Cassell, J. Handel, H. Smith, R. Moore, C. Grumme. Third Row—W. Coriell, B. Sapp, L. Shields, M. George, V. Hale, K. Hall, E. Jordan, B. Nolder, M. Bodmer, B. Dunaway, M. Peed, E. Rapp, B. Walthers, J. Entler, E. Keyser, W. White, W. Hilt.



CLARENCE ADAMS "Codge"
College Prep.—Chemistry Club 3, 4;
Latin Club 1; Scholarship 1, 2, 3.



CHARLES BLOSSER "Chuck"
Ind. Arts—Basketball 1, 2, 4; Glee Club
4; Basketball Mgr. 1.

YVONNE ATKINS "Vonnice"
Commercial with Latin—Glee Club 3,
4; Spanish Club 3; Chemistry Club 4;
English Club 4.



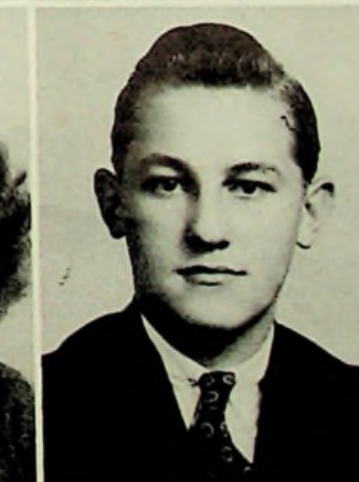
MARILYN BODMER "Cydney"
Commercial—Glee Club 3, 4.

DUANE BLAKE "Pig"
Ind. Arts—Intramural Basketball 1, 2.



WILMA BOGGS "Tommy"
College Prep.—English Club 1, 3, 4;
Latin Club 1, 2, 3, 4; Honor Society 3, 4;
Class Officer 1; "Hillbilly Courtship" 3;
"Lena Rivers" 3; Glee Club 3, 4; News-
ette Staff 3; Scholarship 1; Chemistry
Club 4.

EILEEN BLAKE "Blakie"
Commercial—Spanish Club 3; Glee
Club 3, 4; Cheerleader 3; English Club
4.

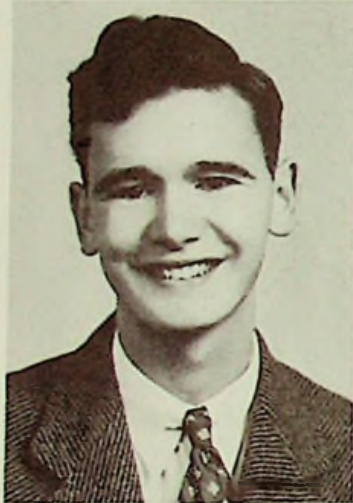


CHESTER BUSSA "Junior"
Commercial with Music—Band 1, 2, 3;
Glee Club 1, 2, 3; English Club 3;
Chemistry Club 4; Class Officer 1;
Newsette Staff 3; "Minstrel" 3.



SAM CASSELL "Perk"
College Prep.—Portsmouth High 1, 3;
Band 2, 4.

BETTY DUNAWAY "Betz"
Home Ec.—Band 1, 2; Glee Club 1, 4.



ELMER COLEMAN "Tuggles"
Commercial—Glee Club 3; Band 4;
Cheerleader 3; "Lena Rivers" 3; English
Club 3.

WINONA DUNN "Nona"
Commercial—Home Ec. Club 1; Glee
Club 4; Honor Society 4; English
Club 1, 4.



RONALD CONLEY "Fats"
Ind. Arts—Intramural Basketball 1, 2, 3.

MABEL ELMORE "Jinx"
Home Ec.—English Club 3, 4.



WANDA CORIELL "Little Wan"
Commercial—English Club 1; Home
Ec. Club 1; Chemistry Club 4.

JUANITA ENTLER "Red"
Commercial—Spanish Club 3, 4; Eng-
lish Club 3; Newsette Staff 3; Home
Ec. Club 2.

ELMER FRASHER "Shot"

College Prep.—English Club 1, 3, 4; Latin Club 1, 2; Basketball 2, 3, 4; Chemistry Club 3, 4; History Club 4; Newsette Staff 3; Senior Survey 4; Honor Society 3, 4; Scholarship 2, 3, 4.

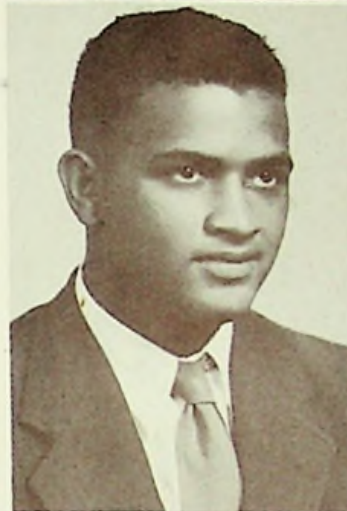


VIRGINIA HALE "Ginny"

Home Ec. and College Prep.—English Club 3, 4.

FRANKLIN GARDNER "Steve"

College Prep.—Basketball 1, 2, 4; "Tom Sawyer" 2; "Lena Rivers" 3; English Club 3, 4; Class Officer 3; Scholarship 2, 3; Newsette Staff 3.



CARL HALL "Reverend"

College Prep.—Intramural Basketball 1; Scholarship 1, 2, 3, 4; Class Officer 2; Band 1, 2, 3; Glee Club 1, 2, 3; Honor Society 3, 4; Newsette Staff 3; Annual Staff 4; Senior Survey 4; Latin Club 1, 3, 4; History Club 4; "Tom Sawyer" 2; "Hillbilly Courtship" 3; "Lena Rivers" 3.

MILDRED GEORGE "Millie"

Home Ec.—Fleming County High 1; Glee Club 3.



KATHALEEN HALL "Kate"

Commercial—Spanish Club 3; Glee Club 3, 4.

CHARLES GRUMME, JR. "Jacob"

Ind. Arts—"Lena Rivers" 3; Glee Club 1, 2, 3, 4; Band 1, 2, 3; Annual Staff 4; Scholarship 4; Newsette Staff 3, 4.



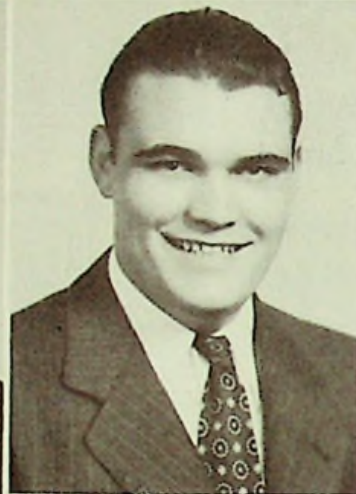
JACK HANDEL "Zeke"

Ind. Arts—Class Officer 4; English Club 1, 3, 4; Glee Club 4; Chemistry Club 4; Annual Staff 4; Basketball 1, 2, 3, 4; Baseball 1; "Pigtails" 1; "Lena Rivers" 3.



WANDA HILT "Hildegard"
 College Prep.—English Club 1, 3, 4;
 Latin Club 1, 2; Band 1, 2, 3, 4; Glee
 Club 1, 2, 3, 4; Chemistry Club 4;
 Newsette Staff 1, 3; History Club 4;
 Senior Survey 4; Honor Society 4.

ERMA HUSTON "Bea"
 Commercial—Honor Society 4; Eng-
 lish Club 4; History Club 4; Scholar-
 ship 4.



JAMES HOPKINS "Jim"
 Ind. Arts—Basketball 3; Glee Club 4;
 (Navy).

MARVIN JENNINGS "Punk"
 Ind. Arts—Basketball 1, 2, 3, 4; Glee
 Club 1, 2; Band 1; Intramural Basket-
 ball 2.



HARLAN HORSLEY "Kyd"
 Ind. Arts—Band 1, 2; Annual Staff 4;
 Newsette Staff 3, 4; Intramural Basket-
 ball 1, 2; Chemistry Club 4; Basketball
 3, 4.

VIRGINIA JONES "Jenny"
 Commercial and Latin—Cheerleader 1,
 3, 4; Band 1, 2, 3, 4; Glee Club 2, 3, 4;
 Latin Club 1, 2; "Lena Rivers" 3; May
 Queen 1.



PAUL HOWELL "Speed"
 Ind. Arts—Baseball 3; Glee Club 4;
 Intramural Basketball 3.

ELIZABETH JORDAN "Libbie"
 Home Ec.—Glee Club 4; Home Ec.
 Club 1, 2.

RAYMOND MUTTER "Ray"
 Ind. Arts—Intramural Basketball 3, 4;
 (Joined Navy).



PAULINE MCGRAW "Polly"
 Commercial—English Club 4.

BETTY KNAUFF "Bet"
 Commercial—Cheerleader 3, 4; Glee
 Club 3; English Club 1; Spanish Club
 4; Scholarship 2.



LORETTA MEYERS "Lefty"
 Commercial—Latin Club 1; English
 Club 1, 3, 4; Newsette Staff 3; Class
 Officer 1, 3; "Pigtails" 1; "Lena Rivers"
 3; Chemistry Club 4; Senior Survey 4;
 History Club 4; Scholarship 1, 2, 4;
 Honor Society 3, 4.

RUTH LISTON "Rusty"
 College Prep.—Band 1, 2, 3, 4; Glee
 Club 1, 2, 3, 4; Latin Club 1, 2; Eng-
 lish Club 1, 3, 4; "Pigtails" 1; "Lena
 Rivers" 3; Chemistry Club 4; Honor
 Society 4; History Club 4; Scholarship
 3, 4.



EILEEN MIGNEREY "Spec"
 Home Ec. and College Prep.—English
 Club 3, 4; History Club 4; Senior Sur-
 vey 4; Home Ec. Club 1; Glee Club 1,
 2; Band 1, 2, 3, 4; Spanish Club 3, 4;
 Chemistry Club 4; Honor Society 4;
 Newsette Staff 3, 4; Annual Staff 4;
 Scholarship 2, 3, 4.

CHARLES LOWE "Charlie"
 Ind. Arts—Basketball 1, 2, 3, 4; Glee
 Club 4.



JUNE MOORE "Jerry"
 College Prep.—English Club 1, 3, 4;
 Latin Club 1, 2, 3, 4; History Club 4;
 Honor Society 3, 4; Scholarship 1, 2,
 3, 4; Senior Survey 4; Chemistry Club
 4; "Lena Rivers" 3; "Pigtails" 1; "Hill-
 billy Courtship" 3.



RAY MOORE "Sonny"
 College Prep.—Basketball 2, 3, 4; Baseball 1, 2, 3, 4; English Club 1, 3; Scholarship 3, 4; History Club 4; Senior Survey 4; Basketball Mgr. 1; Chemistry Club 4; Glee Club 4.

RODERICK PATRICK "Rod"
 Ind. Arts—Basketball 3, 4; Class Officer 4.



ELPHA MAE KEYSER "Ciss"
 Commercial—Cheerleader 1, 2, 3, 4; English Club 1, 3, 4; Spanish Club 3, 4; Honor Society 3, 4; Scholarship 3; Home Ec. Club 1; Newsette Staff 3.

MARIE PEED "Mimi"
 Home Ec.—English Club 1, 3; Home Ec. Club 1, 2; Glee Club 4.



BETTY NOLDER "Nod"
 College Prep.—Band 1, 2, 3, 4; Glee Club 1, 2, 3, 4; Chemistry Club 4; English Club 4.

RUTH PYLES "Maggie"
 Commercial—English Club 4; History Club 4; Scholarship 4; Portsmouth High 1, 2, 3.



MARY JEANETTE PARKER "Mary J."
 College Prep.—Latin Club 1, 2; English Club 1, 3, 4; Glee Club 1, 2, 3; Honor Society 4; History Club 4; Senior Survey 4; Newsette Staff 3, 4; Scholarship 4; Chemistry Club 4; Annual Staff 4.

EMMA RAPP "Emmy Lou"
 Commercial and Latin—Latin Club 1, 2; English Club 1, 3, 4; Band 1, 2, 3, 4; Glee Club 1, 2, 3, 4; Newsette Staff 3; Class Officer 2.

BEULAH SAPP "Bill"
Commercial—Chemistry Club 4; Pike-
ton High 1, 2, 3.



LORRAINE SIMPSON
Commercial and Home Ec.—(WAC)

MABEL SARTIN "Sargums"
Commercial—Chemistry Club 4; News-
ette Staff 3.



ELMO SMALLEY "Moe"
Ind. Arts—Class Officer 4; Basketball
1, 2, 3, 4; "Lena Rivers" 3; Chemistry
Club 4.

EMOGENE SHEPHERD "Shep"
Commercial—English Club 3; Glee
Club 4; Spanish Club 3.



HARRY SMITH "Gus"
Ind. Arts—English Club 1; Glee Club
4; Basketball 2, 3, 4; Class Officer 4.

LORENE SHIELDS "Giggles"
Home Ec.—Glee Club 3, 4; English
Club 4.



MARY M. STRICKLAND "Moogie"
College Prep.—Honor Society 3, 4;
"Lena Rivers" 3; English Club 1, 3, 4;
Chemistry Club 4; Senior Survey 4;
Latin Club 1, 2; Newsette Staff 3; An-
nual Staff 4; Glee Club 1, 2, 3, 4; Band
1, 2, 3, 4; History Club 4.



BARBARA WALTHER "Babs"
College Prep.—Band 3, 4; Glee Club
2, 3, 4; English Club 3; "Lena Rivers"
3; Latin Club 4; Chemistry Club 4.

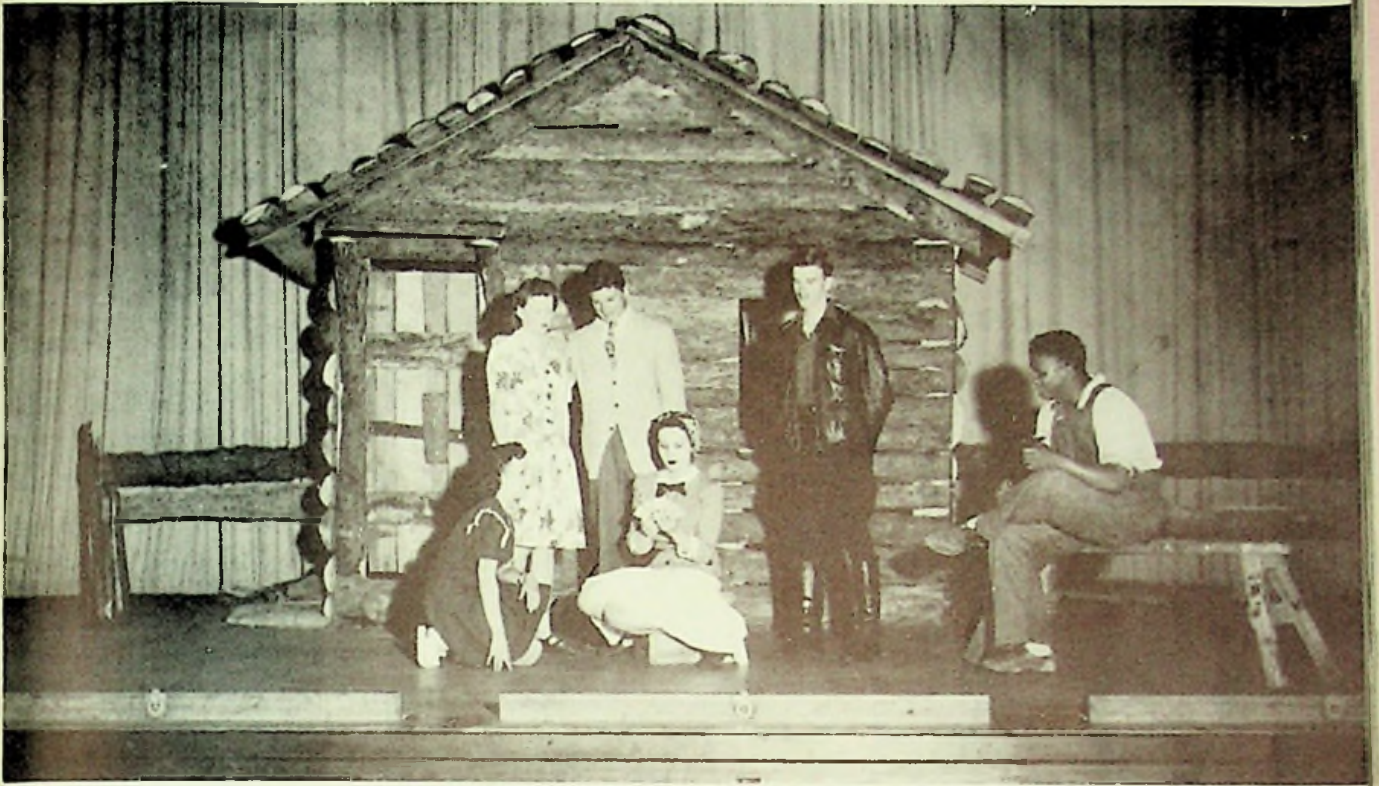
DEAN WEAVER "Dizzy"
Home Ec.—English Club 4.



WINNIFRED WHITE "Winnie"
Commercial—Logan High 1; English
Club 3, 4; Scholarship 2, 3, 4; Chem-
istry Club 4; History Club 4; Honor
Society 3, 4; Senior Survey 4; Annual
Staff 4.

MAMMY'S LIL' WILD ROSE

A comedy-drama in three acts



Left to right—H. Horsley, L. Meyers, E. Mignerey, M. Strickland, H. Smith, E. Smalley, R. Liston, W. Boggs, F. Gardner, J. Moore, V. Jones, J. Handel.







THE
Junior
CLASS





JUNIOR OFFICERS

Vice President, A. Ratliff; President, L. Fields; Secretary-Treasurer, B. Sheets.

JUNIOR ADVISERS

Mrs. Kean; Mrs. Ressinger.





Bottom Row (L. to R.)—L. Stowers, J. Willis, J. Mark, J. Hall, M. Hahn, P. Malone, R. Smith, F. Thurman, S. Disel, B. Mangus, R. Browning, A. Gardner, F. Browning, W. Spears, W. Bridwell, M. Miller, J. McCorkle. *Second Row*—J. Davis, D. Mitchell, L. Shivener, R. Conley, W. Evans, F. Fannin, D. Bussa, H. Atkins, A. Ratliff, E. Farmer, J. Gayhardt, B. Sheets, J. Risner, L. Evans, K. Vernier, J. Lyles, E. Howard, B. Evans, N. Prince, M. Parry. *Third Row*—W. Dillow, R. Andre, C. Litteral, R. Mullins, R. Woods, K. McCall, J. Daulton, R. Kayser, L. Woren, V. Woods, B. Richards, E. Stephenson, R. Hall, R. Rapp, B. Pyles, L. McCowen, D. Criswell. *Fourth Row*—J. Nolder, E. O'Dell, W. Barker, R. Winters, L. Pollard, W. Diller, B. Baker, T. Estep, E. White, H. Ferguson, N. Burden, H. Spradlin, N. Hull, R. Mignerey, J. Meyers, W. Cook, W. Mathews.

HATS OFF!

An operetta in two acts



Front Row (L. to R.)—S. Wright, A. Gardner, R. Smith, J. Risner, I. Mershon, F. Browning, L. Shivener, N. Burden, W. Dillow, E. White, K. McCall, R. Woods, J. Hall, W. Diller, N. Hull, R. Mullins. Second Row—R. Browning, J. Mark, R. Conley, T. Lewis, W. Evans, J. Bridwell, B. Mangus, L. Stowers, J. Davis, J. Liles, W. Cook, L. Pollard, R. Mignerey, H. Ferguson, R. Hall, R. Baker, G. O'Dell, C. Literal, B. Mathews, K. Diller.



We, the students and faculty of Washington High School, are glad to welcome Bill McKay back into the ranks.

Bill was given a medical discharge when he had completed four years and three months' service in the United States Army. Three years and five months of this period of service was overseas duty.

When Bill enlisted in 1940, he was a junior here, and this year he returned to resume his studies. Next year Bill will complete his high school education, and then he will be eligible for the college training offered to veterans by the G. I. Bill of Rights.

To you, Bill, we say, may life in the future reward you for your sacrifices of the past.

THE
Sophomore
CLASS





SOPHOMORE OFFICERS

President, B. Piatt; Vice President, R. Moriarty; Secretary-Treasurer, M. Stamm.

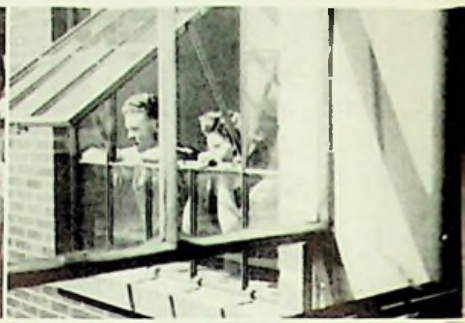
SOPHOMORE ADVISERS

Miss Kegley; Miss Cole.





Bottom Row (L. to R.)—H. McMaster, M. Wiseman, H. Shively, L. Lutz, E. Pennington, B. McCowen, R. Cooper, M. Bealer, E. Bond, M. Crawford, K. Craft, F. Hall, J. Vicars, B. Cottrell, J. Barnes, R. Ramey, J. Sibrel. *Second Row*—M. Malone, B. Moore, S. Risner, A. Rankin, B. Boogs, I. Swords, R. Carter, D. Fennimore, G. Carrington, I. Sartin, V. Schwamberger, H. Rice, V. Sanford, C. Gabbert, M. Lutz, M. Smith, I. Scott, J. Baker, N. Davis, I. Reynolds. *Third Row*—M. Shepherd, F. White, J. McCall, A. Sheffield, M. Stamm, C. Mowery, E. Nickel, C. Windsor, P. Reiser, R. Miller, R. Newman, R. Arnett, R. Clifton, R. Cunningham, L. Mullen, L. Coburn, D. Daulton. *Fourth Row*—R. Wiltshire, J. Conley, B. Jacks, A. Wiltshire, D. Davis, R. Harrison, H. Williams, R. Moriarty, W. Knauff, G. Parry, D. Mann, J. Tipton, B. McGinn, C. Craycraft, B. Stuen, J. Blake, G. Mullen, W. Lauder, W. Stamper.



THE
Freshmen
CLASS





FRESHMAN OFFICERS

President, D. James; Vice President, W. Pyles, Secretary, J. Shivener; Treasurer, E. Cox



FRESHMAN ADVISERS

Mr. Stamm; Mr. Kisor.



Bottom Row (L. to R.)—D. Boland, B. Royal, H. McGraw, R. Ratliff, J. Cooper, A. Litz, C. Gillum, H. O'Dell, J. Blewins, F. Cox, J. Wolery, B. Risner, R. Keyser, D. Keene. *Second Row*—M. Fields, B. Gregory, C. Rose, Y. Sutton, G. Burchett, B. Martin, K. Frump, L. Porter, L. Porter, C. Albrecht, L. Howard, S. Wright, M. Ratliff, B. Addis, P. Mahan, H. Castle, D. Boggs. *Third Row*—J. Barber, J. Logan, A. Holt, F. Speck, L. Huff, A. Gray, S. Spriggs, E. Sexton, C. Hill, E. Vaughters, L. Huston, J. Pack, B. Murray, D. Sheets, J. Young, M. Hall, K. Pennington, L. Williams, D. Crull, O. Litz, C. Goodman, P. George, V. Harrison, E. Mullen. *Fourth Row*—M. Roth, M. Quicke, C. Hopkins, G. Waller, R. Clifton, E. Backus, E. DeAdley, J. Edmisten, W. Mathews, B. Stone, C. Wessell, R. Davis, H. Adkins, J. Woods, C. DeAdley, C. Roark, P. Ison, B. Sparks, L. Shaffer, W. Cochran, R. Walther, D. James, C. Williams, E. Cox. *Fifth Row*—H. Barber, E. Shepherd, W. Lison, A. Hazelbaker, W. Kuhn, J. Beck, J. Diller, V. Pyles, L. Jones, P. Noel, K. Diller, J. Shivener, D. Moore, M. Thurman, P. Dillow, C. Ratliff, N. Carver, B. Bodmer, W. Hook, W. Jewett, R. Thompson, B. McMullen, E. Kuhn, W. Pyles, C. Carrington, L. Mathews, J. Smith.



KATHLEEN ROLF



MARGARET STRICKLAND

E
I
G
H
T
H



EIGHTH GRADE OFFICERS:
President, W. Damron; Vice President, M. Harper;
Secretary, P. Jerrolds; Treasurer, P. Lauder.

G
R
A
D
E



FOSTER KIRKER



Bottom Row (L. to R.)—D. Piatt, B. Nichols, H. Shepherd, R. Howard, R. Meyers, J. Shinkel, J. Harrison, J. Liston, E. Klever, B. Baker, L. Frazier, P. Lovejoy, D. Murta, C. Oney, D. Shortridge, M. Evans, M. Tracc. *Second Row*—A. Weaver, H. Thomas, A. Dunn, H. Shope, B. Cochenour, P. Jackson, M. Casey, M. Boyd, I. Gilkerson, K. Farley, F. Farmer, P. Hopkins, M. Bridwell, N. Williams, I. Brown, J. McCall, G. Morgan, J. Wright. *Third Row*—B. Hall, J. Shaffer, E. Conley, R. Lewis, E. Bellamy, E. Harrison, S. Rexroad, G. Thompson, B. Miller, B. Grubbs, G. Knauff, H. Rapp, R. Miller, B. Ratliff, E. Mowery, D. Mershon. *Fourth Row*—J. Journey, D. Meade, J. Stamper, B. Arn, L. Shump, W. Damron, D. Young, W. Bridwell, B. Arnett, R. Grubbs, H. Adams, V. McComas, J. Ricks, M. Ken-
 nard, R. Pertuset, P. Webb, W. Eichenlaub.

Activities





ANNUAL STAFF

Bottom Row (L. to R.)—J. Handel, Activities Editor; E. Smalley, Feature Editor; C. Grumme, Editor-in-chief; M. Strickland, Assistant Editor; M. Parker, Typist.
 Second Row—E. Mignerey, Advertising Editor; C. Hall; W. White, Advertising Editor; H. Horsley, Business Manager; R. Mignerey, Art Editor.



NEWSETTE STAFF

Bottom Row (L. to R.)—L. Shivener, Reporter; E. Mignerey, Typist; J. Moore, Editor-in-chief; J. Hall, Reporter; M. Hahn, Reporter. *Second Row*—C. Grumme, Printer; M. Parker, Typist; H. Horsley, Printer; R. Mullins, Artist; R. Cunningham, Artist.



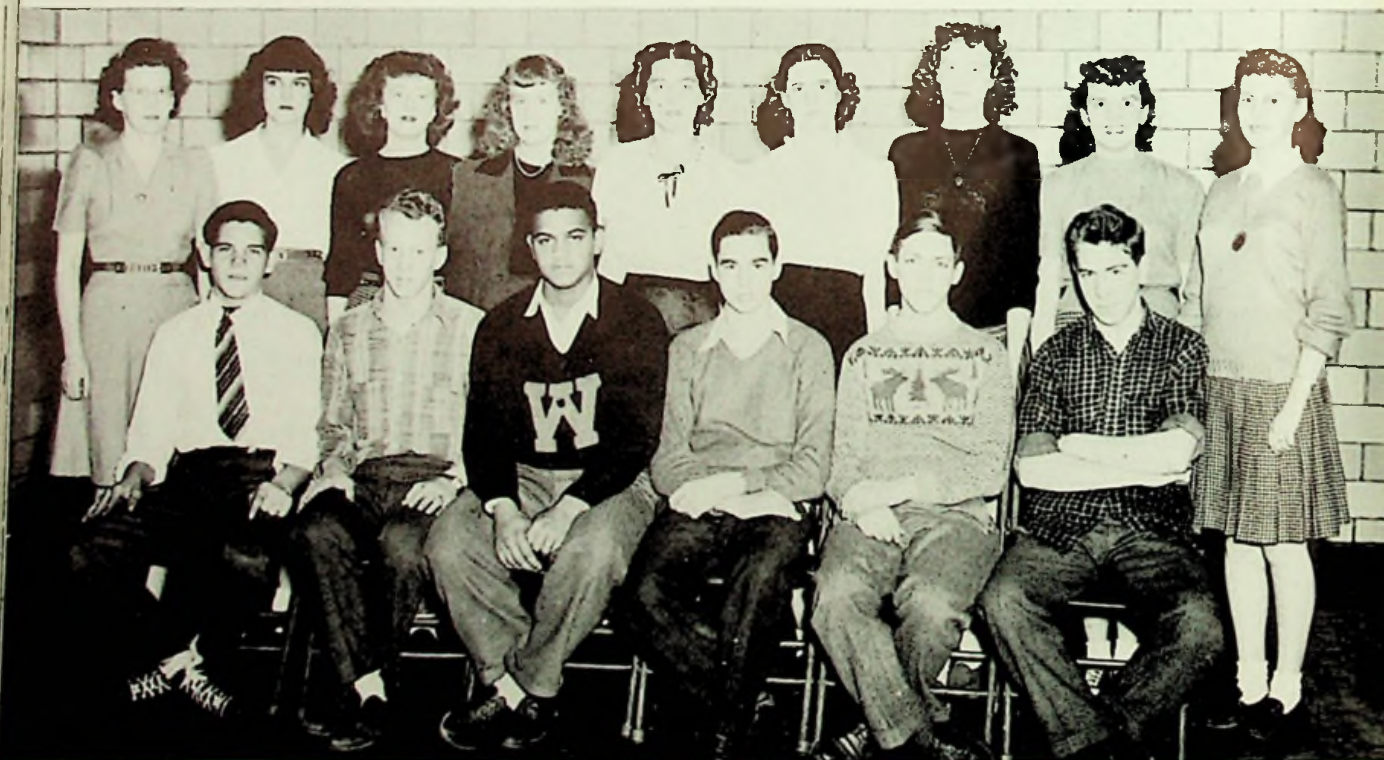
HONOR SOCIETY

Bottom Row (L. to R.)—M. Parker; L. Shivener; J. Hall; W. Hilt; M. Strickland; W. Boggs; J. Moore; E. Keyser. *Second Row*—M. Hahn; L. Meyers; R. Liston, Secretary; W. Dunn; A. Ratliff; R. Conley; E. Huston; E. Mignerey; W. White, Vice President. *Third Row*—J. Meyers; B. Mathews; E. Frasher, President; C. Hall, Treasurer.



LATIN CLUB

Bottom Row (L. to R.)—F. Pennington; B. McCowen; A. Ratliff; B. Boggs; M. Shepherd; H. Rice; R. Conley; F. Browning. *Second Row*—B. Moore, M. Malone, N. Plummer; W. Boggs; J. Moore; F. White; B. Walther; C. Gabbert. *Third Row*—J. Blake, President; J. Tipton; R. Cunningham; R. Miller; W. Mathews; R. Moriarity, Secretary; R. Wiltshire.



SPANISH CLUB

Bottom Row (L. to R.)—E. White; R. Mignerey; F. Gardner, President; B. Richards; W. Dillow; V. Woods. *Second Row*—E. Mignerey, Secretary; N. Prince; M. Parry; E. Keyser, Vice President; L. Shivener; D. Mitchell; J. Entler; Treasurer; B. Sheets; J. Gayhardt.



FRESHMAN-SOPHOMORE ENGLISH CLUB

Bottom Row (L. to R.)—D. Crull; L. Williams; H. Castle; N. Plummer; S. Risner, President; L. Reynolds; V. Schwamberger, Treasurer; B. Boggs. *Second Row*—D. Boggs; J. Cooley; F. Pennington; E. Kuhn; H. Rice; M. Shepherd; M. Malone. *Third Row*—M. Quickel; B. Addis; P. Mahan; B. Gregory; S. Wright; B. Martin; A. Sheffield; R. Sparks. *Fourth Row*—D. Daulton; J. Blake; J. Wolery; D. Moore, Vice President; C. Roark; R. Cunningham; J. Cooper.



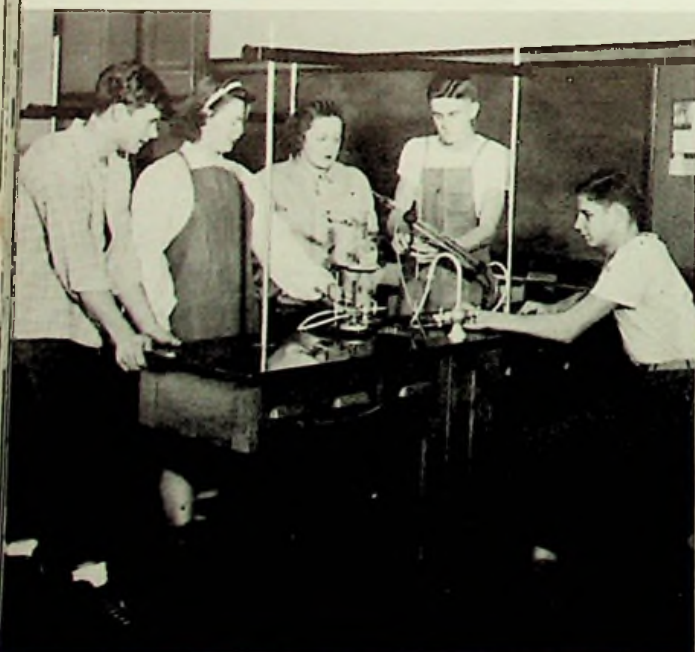
JUNIOR-SENIOR ENGLISH CLUB

Bottom Row (L. to R.)—R. Conley; J. Hall; W. Hilt, Vice President; E. Rapp; E. Blake; D. Weaver; R. Pyles; L. Meyers; W. White; E. Mignerey. *Second Row*—M. Strickland, Treasurer; J. Moore; W. Boggs; E. Keyser; L. Shivener; D. Mitchell; B. Sheets; A. Gardner; M. Elmore; W. Dunn; P. McGraw; E. Huston. *Third Row*—C. Hall; F. Gardner, President; J. Meyers; W. Mathews; E. Frasher; J. Handel; A. Ratliff, Secretary; M. Parker; R. Liston; L. Shields; M. Hahn.



HISTORY CLUB

Bottom Row (L. to R.)—W. Hilt, W. Evans, F. Browning, R. Conley, J. Moore, W. White, E. Mignerey. *Second Row*—M. Strickland, L. Meyers, R. Pyles, M. Hahn, A. Gardner, B. Mangus, E. Huston. *Third Row*—R. Liston, M. Parker, E. Frasher, B. Richards, W. Mathews, R. Moore, J. Meyers, C. Hall.

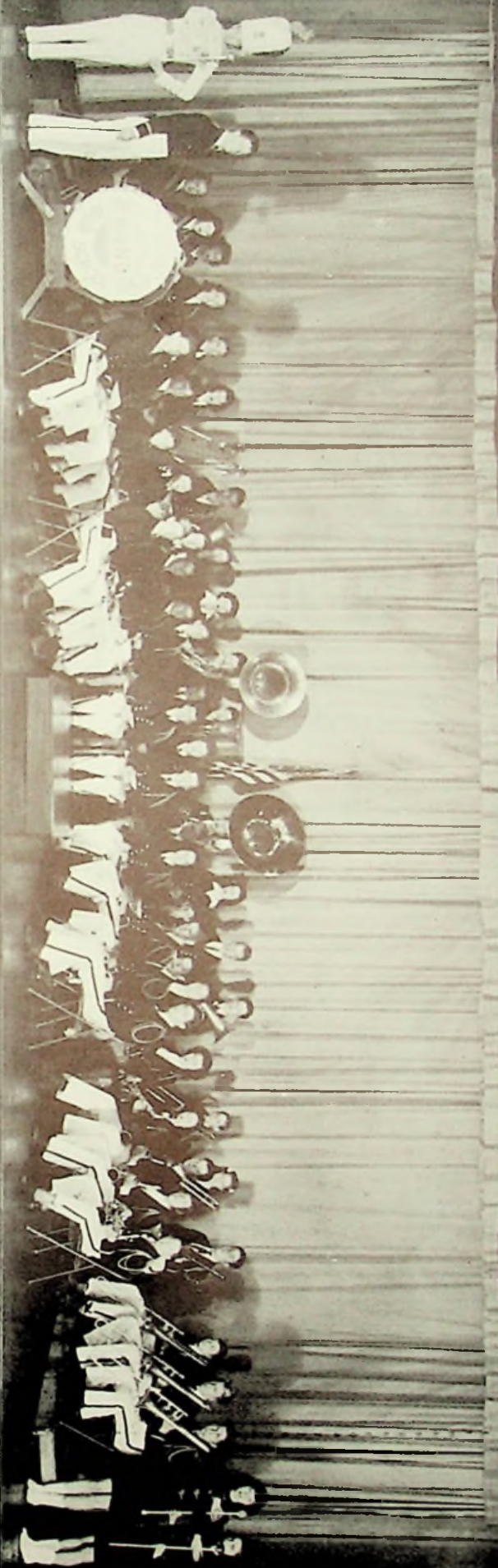






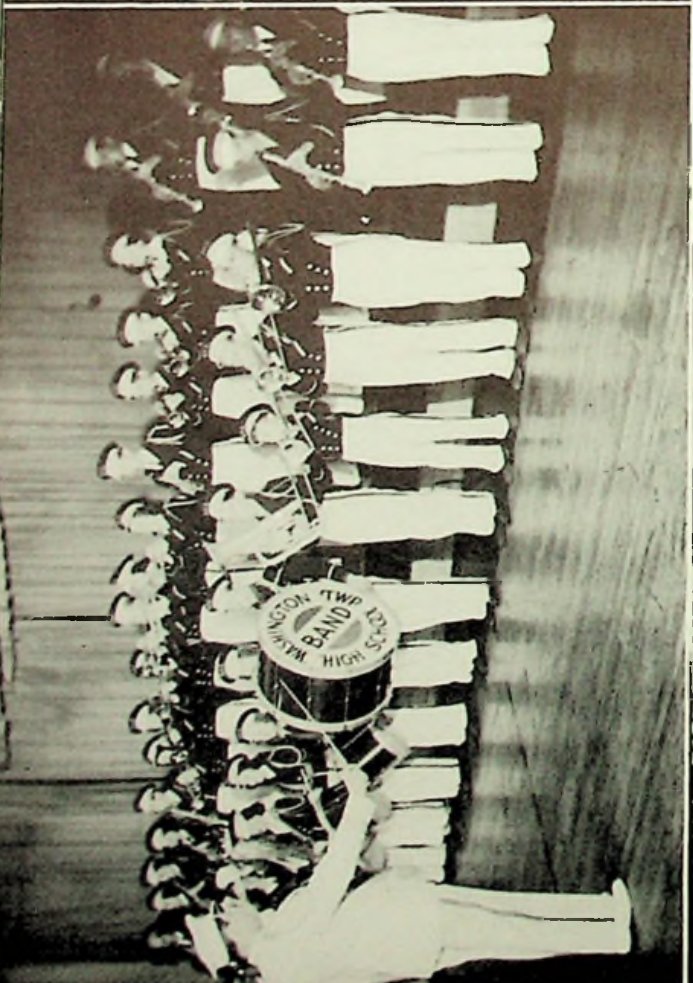
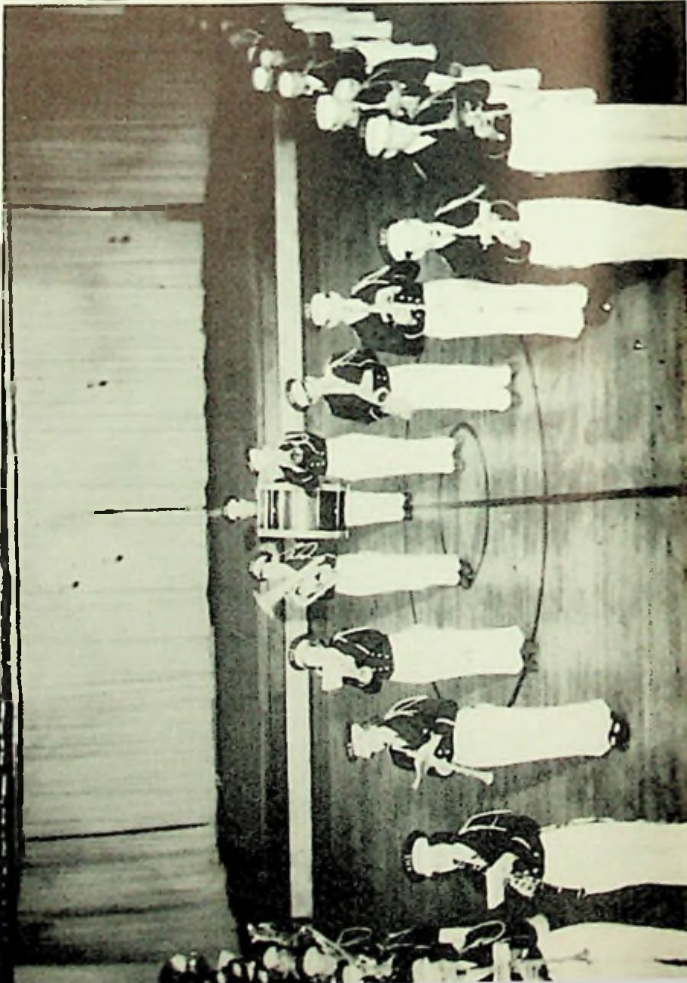






BAND

Bottom Row (L. to R.)—R. Davis; E. White; S. Risner; B. Sheets, Treasurer; E. Mignerey, President; M. Strickland, Secretary; J. Daulton, R. Moriarity; W. Dillow.
Second Row—S. Cassel; R. Newman; D. Sparks; M. Bealer; K. Diller; R. Thompson; C. Hill; B. Nolder, Vice President; R. Wiltshire; F. Cox; H. Castle; J. Young;
 D. Boggs; R. Andre; R. McGinn; D. Keene. *Third Row*—E. Coleman, N. Burden; W. Hill; B. Boggs; B. Walther; V. Harrison; D. James; E. Rapp; G. Parry;
 W. Pyles; B. Moore; J. Smith; J. Harrison; H. Shepherd; J. McCall; R. Mignerey; R. Rapp; R. Meade; P. Dillow; C. Ratliff; W. Liston; W. Cook; N. Hull; R. Liston.
 V. Jones.

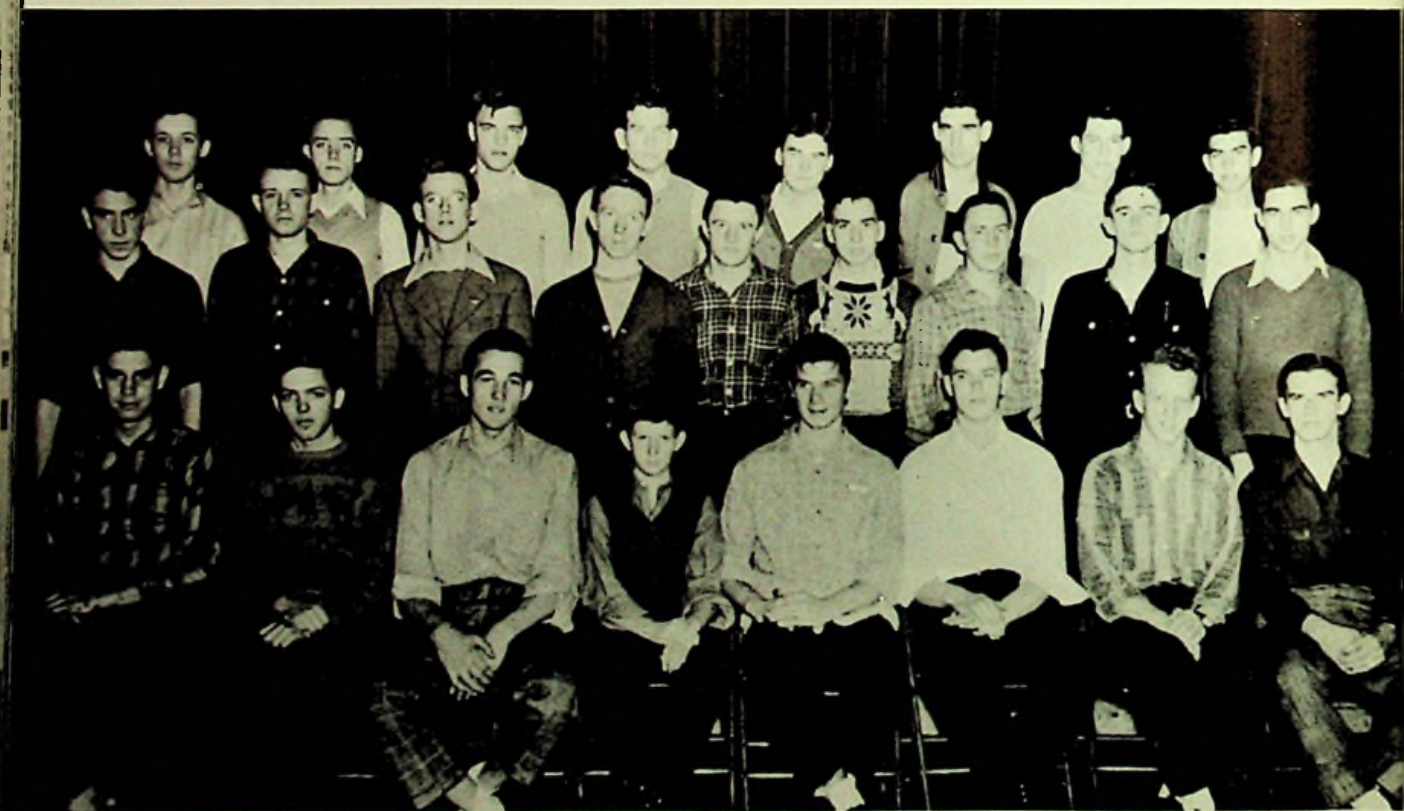






GIRLS' GLEE CLUB

*Bottom Row (L. to R.)—*B. Martin, B. Gregory, E. Rapp, W. Hilt, M. Bodmer, C. Frump, L. Shivener, D. Mitchell, E. Blake. *Second Row—*M. Srickland, M. Bealer, P. Dillow, W. Boggs, Y. Sutton, G. Burchett, V. Hale, S. Distel, M. Peed, V. Jones, J. Lyles. *Third Row—*A. Holt, B. Nolder, R. Liston, J. Baker, W. Dunn, K. Hall, M. George, E. Jordan, L. Shields, E. Shepherd, J. Gayhardt.



BOYS' GLEE CLUB

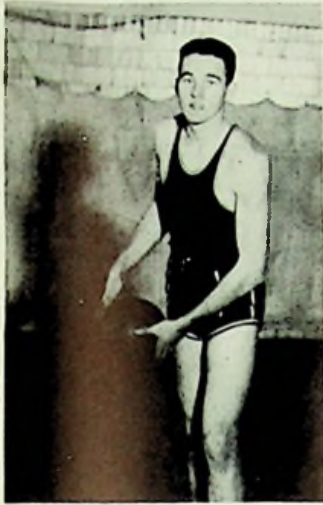
*Bottom Row (L. to R.)—*H. Horsley, W. Dillow, E. Smalley, F. Cox, J. Handel, R. Andre, R. Mignerey, H. Smith. *Second Row—*V. Woods, E. Porter, C. Grumme, T. Estep, W. Diller, L. Pollard, R. Patrick, R. Moore, B. Richards. *Third Row—*R. Rapp, H. Spradlin, P. Howell, E. O'Dell, C. Adams, C. Lowe, C. Blosser, R. Kayser.

Athletics





Bottom Row (L. to R.)—R. Patrick, L. Woten, E. Frasher, R. Moore, H. Smith, E. Smalley.
Second Row—F. Gardner, M. Jennings, C. Blosser, H. Horsley, C. Lowe, J. Handel, R. Kisor (Coach).



CAPT. ELMO SMALLEY



HARLAN HORSLEY



CHARLES BLOSSER



CHARLES LOWE



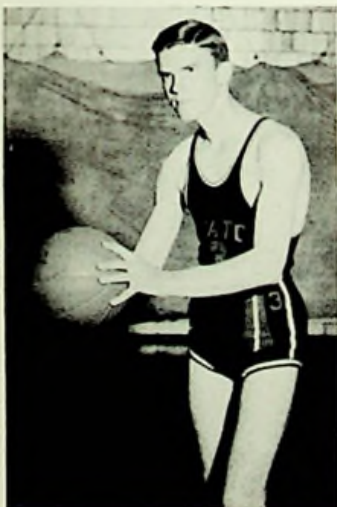
JACK HANDEL



FRANK BURCHETT



RODERICK PATRICK



HARRY SMITH



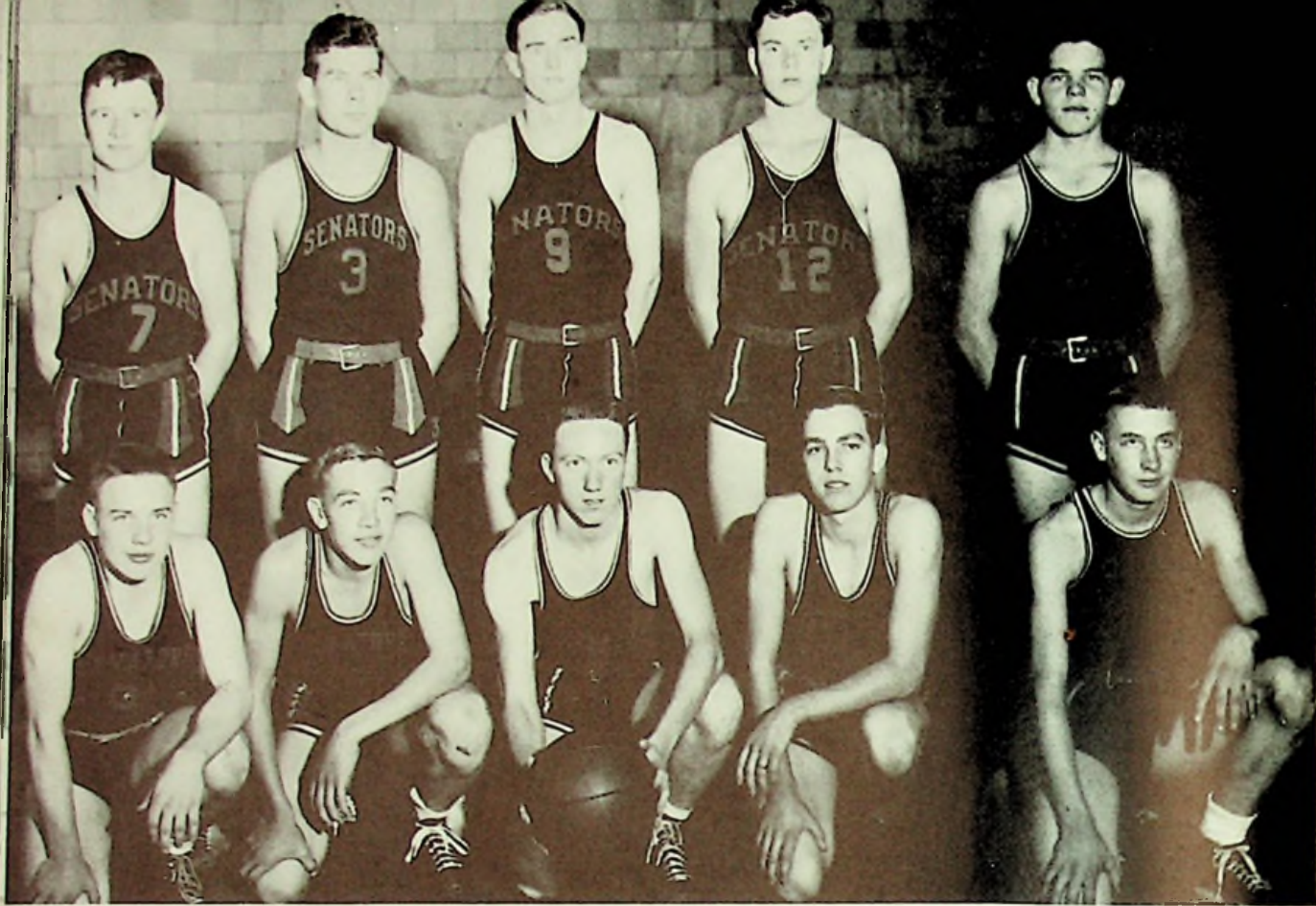
MARVIN JENNINGS



ELMER FRASHER



FRANK GARDNER



*Bottom Row (L. to R.)—R. Moriarity, L. Woten, T. Estep, B. Piatt, W. Barker.
 Second Row—W. Diller, E. O'Dell, R. Baker, R. Andre, E. White.*

Coach
 Ralph
 Kisor



Washington
 Senators
 1944-45



VARSITY CHEERLEADERS

E. Keyser, L. Shivener, N. Plummer, B. Knauff, V. Jones, J. Gayhardt.



RESERVE CHEERLEADERS

J. Shivener, J. Pack, J. Diller, V. Schwamberger, R. Carter, J. Cooley.

SEASON'S BASKETBALL RECORD

	We	They
Green	81	26
Valley	39	33
Wheelersburg	23	37
South Webster	71	27
Clay	54	28
Otway	56	25
McDermott	50	25
Locust Grove	19	28
Minford	38	35
Portsmouth East	25	19
Valley	40	23
South Webster	47	29
Wheelersburg	29	31
Rarden	79	24
Green	52	33
Clay	39	20
Otway	48	12
Glenwood	24	27
Portsmouth East	28	34
Glenwood	35	33
Rarden	60	19
Minford	39	23
McDermott	42	27

SCIOTO COUNTY TOURNAMENT

Minford	57	26
South Webster	51	29
<i>—Finals—</i>		
Wheelersburg	20	22

WAVERLY TOURNAMENT

Winchester	57	28
Kitts Hill	56	34
Locust Grove	33	37
<i>—Consolation—</i>		
Fairfield	55	25



H. HORSLEY



C. LITERAL



R. MOORE



C. MOWERY



J. HANDEL



L. WOTEN



F. BURCHETT



H. O'DELL



D. MOORE



I. MORIARITY



B. PIATT



G. PARRY



The sun did it.



Different view points.



Why be quiet?



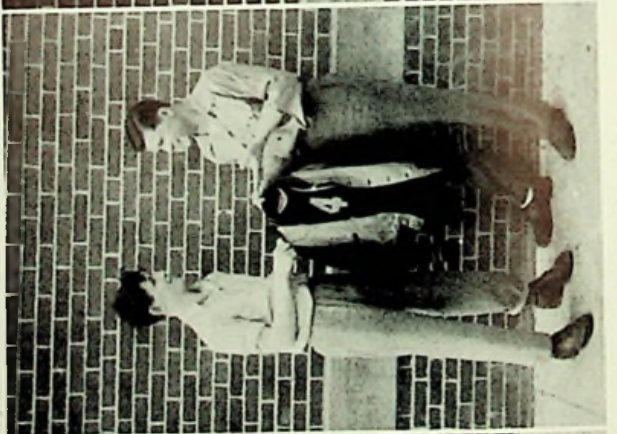
Just whirl it.



Have you heard this one?



Smile, please.



You take over.



Carry on my talking.



Get, hep.



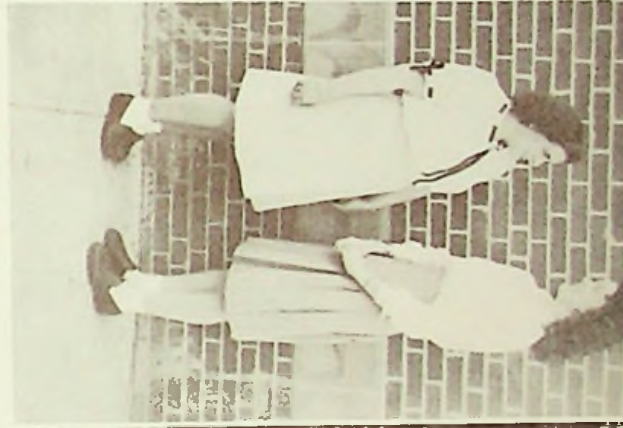
Hi! Shorty!



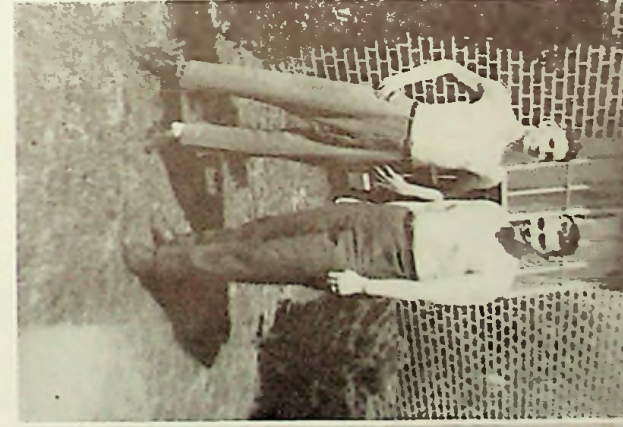
Sh! Sh!



Just hit the keys.



Hit high C.



I eat spinach.



But it's fun to be late.



Now you can make music.



Blah! Blah! Blah!



Good to the last stretch.



Who cares!



You keep them!

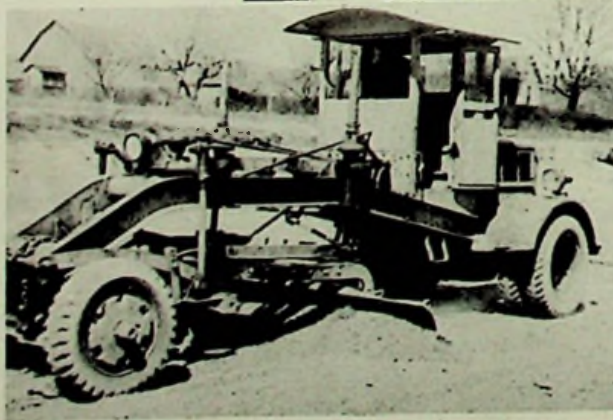
THE MAINTENANCE DEPARTMENT



Francis
Mitchell



Chester
Reynolds



Tough Work



Bill Duncan

Congratulations and Best Wishes

Coca-Cola

TRADE-MARK REG. U. S. PAT. OFF.

The Coca Cola Bottling Co.

Portsmouth, Ohio

SELBY SHOES

1007 Gallia Street

QUALITY SHOES

FOR MEN, WOMEN, CHILDREN

Phone 3120

WALKER'S
SHOE STORE

FINE QUALITY SHOES

PORTSMOUTH, OHIO

CAMEO
RESTAURANT

SODA GRILL

GOOD FOOD IS GOOD HEALTH

839 Gallia St.

Portsmouth, Ohio

SAMUEL LEVI & CO.

VISIT OUR NEW STORE

BESIDE THE LAROY THEATRE

842 Gallia St.

Phone 796



Portraits by Marting

... are comparable to the finest made anywhere. You will be delighted with our soft light, without glare, which will assure you of truly natural expressions.

QUALITY THAT COUNTS
COUNTS' BAKERY

Phone 226

219 Market St.

GEISLER'S

Phone 294

221 Market St.

QUALITY MEATS

Stahler's Pharmacy

"THE DRUG STORE OF
SERVICE AND ECONOMY"

Phone 137

208 Market St.

Gemperline Furniture
Company

QUALITY FURNITURE

Phone 1063

612-626 Second St.

KEEP-U-KNEAT

CLEANERS

647 Second St.

Phone 834

FOWLER'S

KODAK FINISHING

PORTSMOUTH, OHIO

Stewart's Drug Store

PRESCRIPTION SPECIALISTS

Phone 2447

904 Gallia St.

"SAY IT WITH FLOWERS"

Compliments of

HERMS FLORAL

CONGRATULATIONS,

GRADUATES!

HARSHA-JOHNSON
CO.

CALL ON US FOR
ALL KINDS OF INSURANCE

M-117-120 Masonic Temple

Phone 2920

Portsmouth, O.

HERFF-JONES COMPANY

Designers and Manufacturers of

SCHOOL AND COLLEGE JEWELRY, GRADUATION ANNOUNCEMENTS,
MEDALS, CUPS AND TROPHIES

INDIANAPOLIS, INDIANA

JEWELERS AND STATIONERS TO WASHINGTON RURAL HIGH SCHOOL

Representative: P. J. BURKART

BEST WISHES

CARR'S

PAINTS - GLASS - WALL PAPER

PORTSMOUTH PAINT COMPANY

GALLIA AT FINDLAY

WOLFF

GOOD CLOTHES

PORTSMOUTH FUR SHOP

CLEANING AND GLAZING
REPAIRS OF ALL KINDS

Phone 330

709 Chillicothe St.

RICHMAN BROS. CLOTHES
Direct from our factory to you.
You save the middleman's profit.

RICHMAN BROS.

311 Chillicothe Street

W. T. GRANT
COMPANY

310 CHILLICOTHE STREET

WINDEL-HOWLAND

*"Service for All Within the Means
of All, Anywhere, Anytime"*

AL WINDEL

1503 Offnere

C. M. HOWLAND

Phone 200

THE CRICHTON
OFFICE SUPPLY CO.

EVERYTHING FOR THE OFFICE

740 Fifth St.

Portsmouth, Ohio

Compliments of

FOLSOM'S

GROCERIES AND LUNCH

NAUVOO, OHIO

Compliments of

HILT'S LUNCH

4th & CALVERT LANE

Phone 0117-R

SCHAEFER'S
Super Markets

3rd AT MARKET

14th AND CHILLICOTHE

2034 11th STREET

BOWSER'S

A Complete Line of

GROCERIES AND MEATS

Fresh Fruits and Vegetables

Phone 0109-L

Washington Blvd.

Compliments of
KAY JEWELRY CO.
817 GALLIA ST.
PORTSMOUTH, OHIO

DEVOSS AND
DONALDSON
ARCHITECTS
National Bank Building
PORTSMOUTH, OHIO

BEST WISHES
to the Graduates of
Washington Rural High School
Distel Furniture Co.

Compliments of
MARVIN JONES
Offnere and Gallia
PORTSMOUTH, OHIO
PHONE 1592

R. E. MILLER
GENERAL MERCHANDISE
Fresh Meats and Vegetables
Phone Sub.-9202 Buena Vista, Ohio

WRIGHT HATCHERIES
ALL-WRIGHT CHICKENS
FEED AND SUPPLIES
Peebles, Ohio Portsmouth, Ohio

DAULTON BROS.
GROCERIES AND MEATS
DELIVERY SERVICE
2nd and Jefferson Portsmouth, Ohio

"It's Easy to Pay the Lewis Way"
36 Years
"Makers of Happy Homes"
HAS COME OF AGE
LEWIS'
The Largest Complete
Furniture Store in Town
CHILLICOTHE AT THIRD

PRINTED BY COMPTOLITH—

THE ECONOMICAL MODERN WAY

COMPTON Engraving and Printing Co.

1412 THIRD ST.

PORTSMOUTH, OHIO

Artists

Engravers

Printers

Photo-Lithographers

SEYMORE COAL CO.

WHOLESALE and RETAIL

4th and Madison Sts.

Phone 2227

Portsmouth, Ohio

Compliments of

Sheets Furniture Co.

COMPLETE HOME OUTFITTERS

Located Out of the
High Rent District

526-30 Second St.

Phone 22

"BE SURE WITH PURE"

THE PURE OIL CO

PORTSMOUTH, OHIO

BRING YOUR CAR
UP TO STANDARD

STANDARD OIL CO.

DISTRIBUTORS

STONE'S
FOOD MARKET

MEATS, FRUITS and
STAPLE GROCERIES

123 Market St. Phone 647

RISNER'S

4th AND CALVERT LANE
PHONE 0217-J

LONG & COMPANY

*"The House of
Quality Furniture"*

729-733 6th St. Portsmouth, O.

ROY ZUEFLE
JEWELER

Authorized Dealer for
Elgin, Hamilton, Gruen, Bulova
WATCHES

Gifts That Last—Convenient Terms
533 Second St. Portsmouth, O.

Community Sales Co.

M. V. FARVER, Mgr.
Where Price Sells, Quality Tells
630-632 Second Street

Star Clothing Co.

PHONE 158
840 GALLIA ST.

E. W. EASTER
GENERAL MERCHANDISE

Phone Sub.-9223
BUENA VISTA, OHIO

LYNN
FUNERAL HOME

CHES RIGGLES

Phone 11 Portsmouth, O.

WILHELM'S
DEALERS IN FINE JEWELRY

507 Chillicothe Street

Compliments of
FORREST W. SUTTON

Blow Your Horn for the Senators!
Buy Your Horn at the
Music Shop and
New Method Studios
Phone 3361-R 703 Chillicothe St.

WURSTER'S
DRUG STORE
THE REXALL STORE

Open Every Day,
Sundays and Holidays
From 8 A. M. to 10 P. M.

Phone 272 419 Chillicothe St.

ASK FOR THESE GOOD FOODS

Gilbert's

VOLUNTEER BEL-DINE

AT YOUR NEIGHBORHOOD

INDEPENDENT GROCER

GILBERT
GROCERY CO.

KOBACKER'S

ATLAS FASHIONS

FAMOUS FOR
HIGH SCHOOL AND COLLEGE
CLOTHES

THE PEOPLE'S STORE

CLOTHING FOR
MEN, WOMEN AND CHILDREN

The Store of Friendly Credit

308 Chillicothe St.

CHAS GRUMME, Mgr.

ROBERTS & CO.

Credit Jewelers

CONGRATULATE GRADUATES

Nationally Advertised
WATCHES—JEWELRY—RADIOS
No Extra Charge for Credit

421 Chillicothe St. Portsmouth, Ohio

SUMMERS AND SON

RECORDS, POPULAR MUSIC

Pianos and Band Instruments

906 Gallia St.

Phone 1971

Compliments of

Portsmouth Interstate
Business College

815 Gallia Street

PORTSMOUTH, OHIO

EMRICK
Funeral Home

FUNERAL DIRECTORS



AMBULANCE SERVICE

TELEPHONE

33 OR 2563

DAY OR NIGHT

FUNERAL HOME

(No Charge)

Compliments of

ARTWIL

418 Chillicothe St.

Phone 3139

COLLINS'

416 CHILLICOTHE ST.

PORTSMOUTH, OHIO

CRAIGMILES

FURNITURE CO.

936 Gallia St.

Phone 319

STAEBLER'S

WATCH REPAIRING

1117 Gallia St.

Phone 1726-Y

Compliments of

THE KOPY KAT

509 Chillicothe St.

Portsmouth, O.

AL J. MELCHER

Melcher Funeral Home

1417 Offnerc Street

Portsmouth, Ohio

Phone 160

Compliments of

SMITH'S
CUT-RATE DRUGS

Phone 150

Portsmouth, O.

Compliments of

A FRIEND

WE OPEN THE WAY

TO LOWER PRICES

DOERR'S

THE GENERAL STORE OF

PORTSMOUTH, OHIO

Phone 451

519-521 SECOND STREET

<p>Compliments of THE BAKE SHOP 619 CHILlicoTHE ST.</p>	<p>KEGLEY'S CABINS, GASOLINE, GROCERIES Route 125 Friendship, O.</p>
<p>SAYRE RESTAURANT SCHOOL LUNCHEs 5th & Rapp Sts. Nauvoo, O.</p>	<p>NEWMAN'S PLACE GROCERIES, GAS AND OIL Buena Vista Pike State Rt. 52 C. E. NEWMAN, Owner</p>
<p>NOLDER'S GARAGE TEXACO GAS AND OIL Buena Vista, O. Phone Sub-9204</p>	<p>CLYDE HERDMAN GROCERIES—GAS—OIL BUENA VISTA PIKE</p>
<p>Compliments of A FRIEND</p>	<p>Compliments of THE OHIO POWER CO.</p>
<p>IDEAL MILK CO. PHONE 623</p>	<p>Buy WAR BONDS and STAMPS</p>
<p>Buy WAR BONDS and STAMPS</p>	<p>KIRBY'S Flowers 923 Gallia at Findlay PHONE 492</p>

