

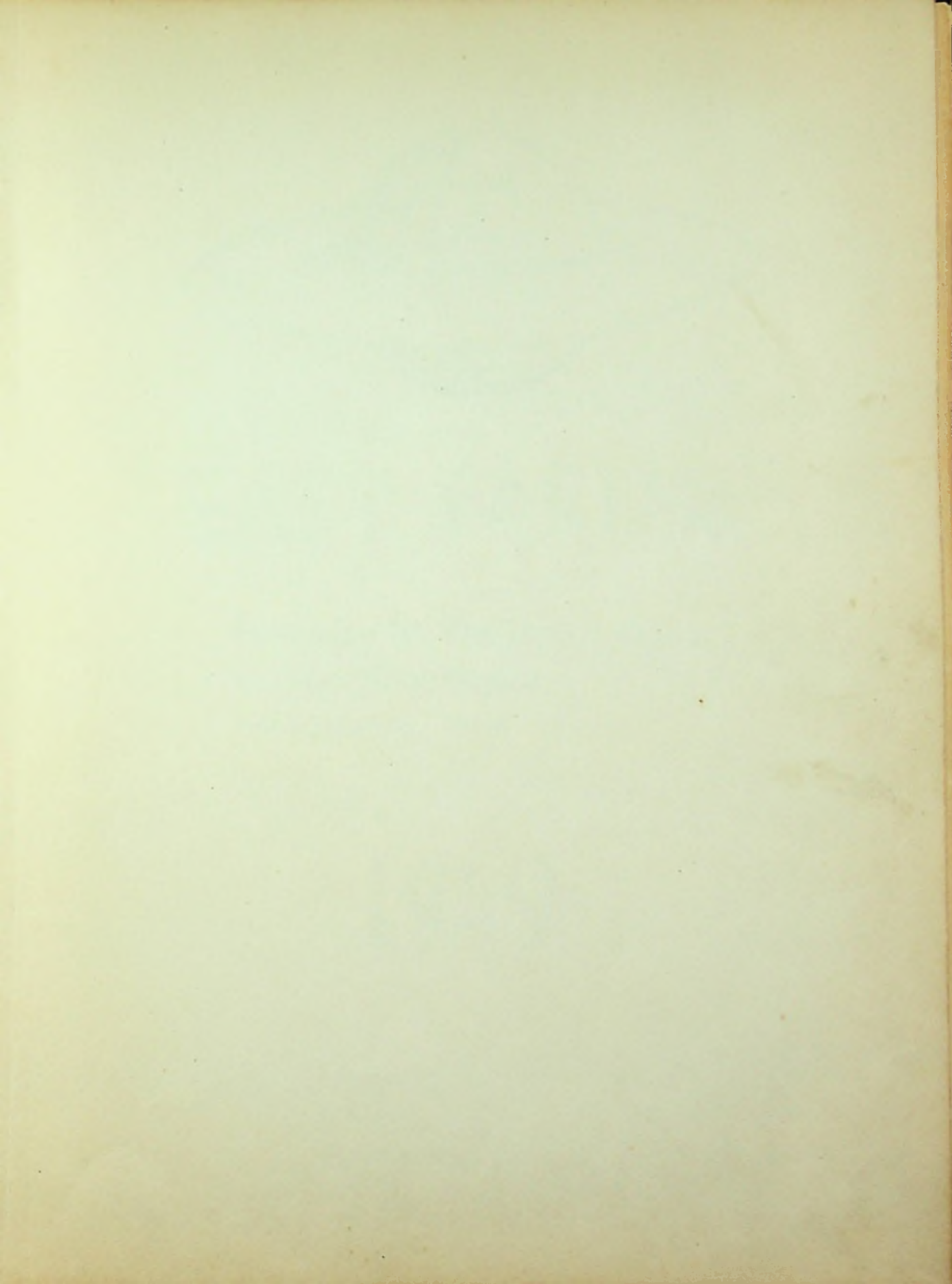
# TARTAN

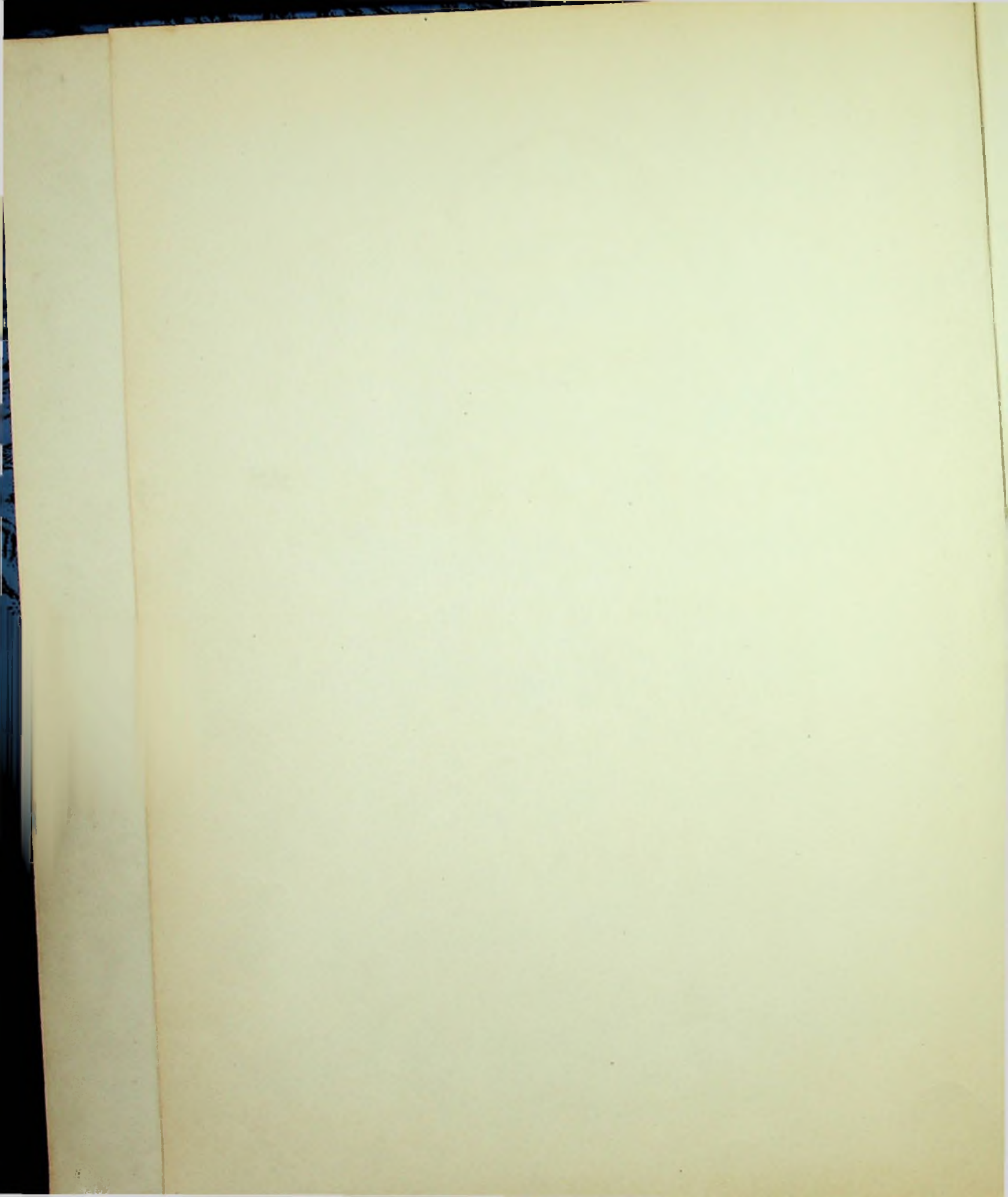


1949

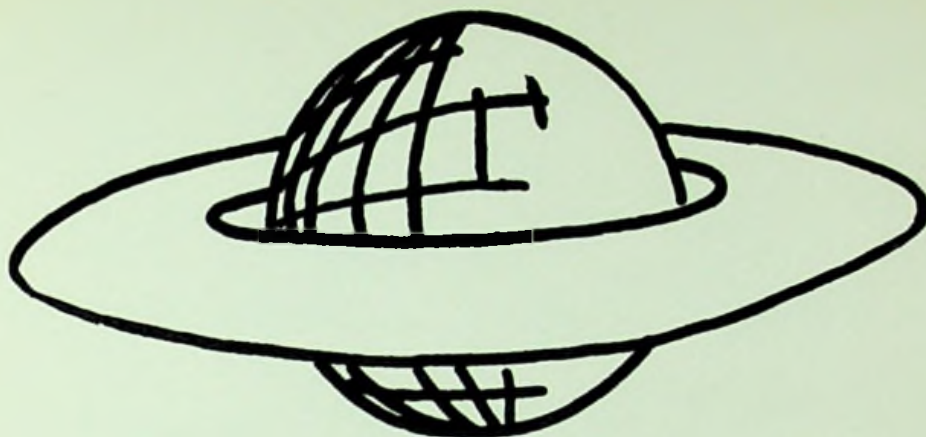












# “EAST TARTAN”

**PUBLISHED BY THE SENIOR CLASS  
OF EAST HIGH SCHOOL,  
PORTSMOUTH, OHIO**

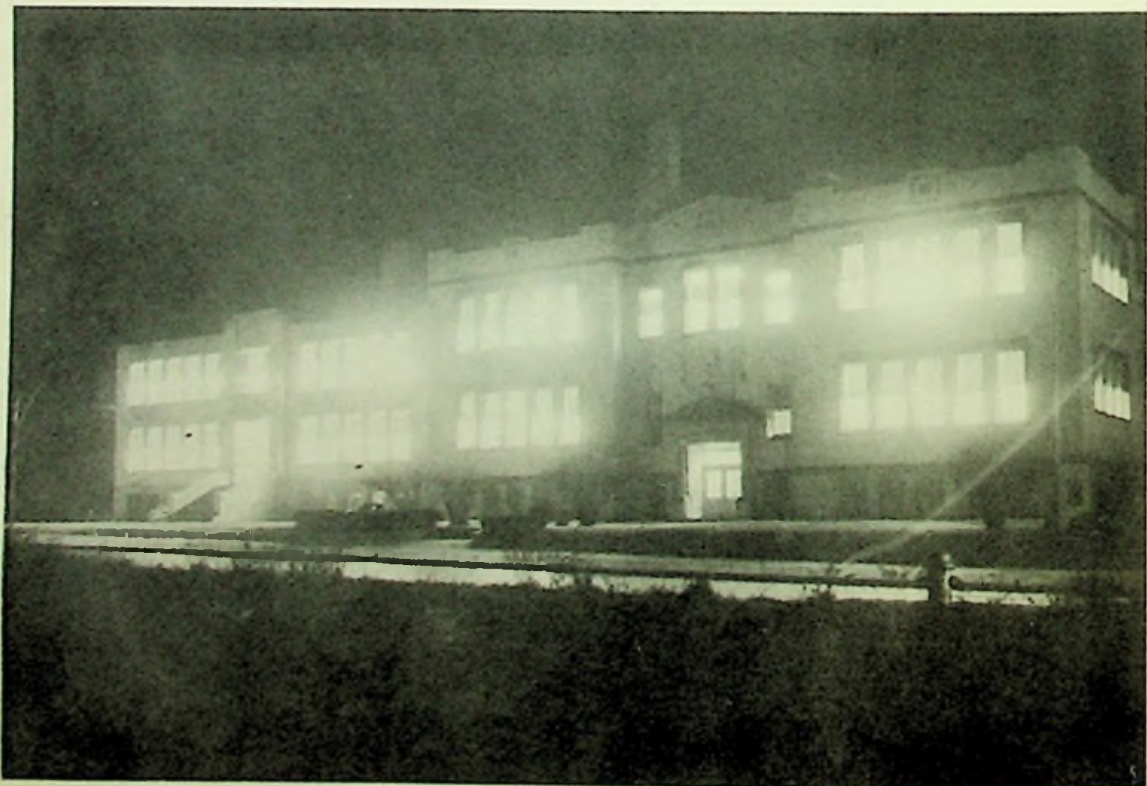
# 1949

Bette Holbrook . . . . . Editor  
Jerry Imm . . . . . Associate Editor  
Barbara Hayward . . . . . Business Manager





*East High Forever*





We will sing to you

We'll defend our standard

In what e're we do.

Hail! Hail! the gangs all here

Cheering you today.

We'll stick together

For the blue and the grey.





As the people in the CLASS OF 1949 began thinking of their last year at East, they decided they too should have a yearbook like the two former graduation classes. They sent four people to the Journalism Conference at Ohio University to get information and ideas to help them with their publication.

When the school term began, the staff started working enthusiastically and hard. We each did our jobs willingly and as well as possible. We have included pictures of every one in school, in school life, classes, or some activity.

We have tried to show briefly the activities of this year and hope the people in later years will carry on the job of publishing an annual.

Bette Holbrook, Editor

## *To Our Friend*

Friendship is a wonderful gift. The act of friendliness brings a friendly act in return.

To one who is always friendly; who is interested in our welfare and progress in school; to one who is ever willing to listen, to advise, and to help; to Dean Helen Taylor we affectionately dedicate this 1949 issue of the TARTAN.







DON JOHNSON





MR. GLEN C. WEST

Superintendent of Schools

Mr. West is completing his fourth year as Superintendent of Portsmouth City Schools.

He received his B.S. degree from Ohio University and his M.A. from Columbia University. Prior to coming to Portsmouth, Mr. West held the position of Executive Assistant to the Director of Education of Ohio.

The students appreciate Mr. West's jovial and happy disposition when he attends their assemblies. They have also found him a good friend when it is necessary to call at his office.

## *Portsmouth City School Board*

The board of Education is composed of five members who are elected by the voters of the city. Its duties consist of the management and conduct of school affairs. The members choose the Superintendent of Schools and the Clerk.

The students of East High School wish to take this opportunity to express their appreciation for the work of the Board of Education. The present Board members have shown themselves to be very capable and very much interested in the schools.

### SCHOOLBOARD IN SESSION MARCH 14

Mr. Arthur Rau, Mr. Charles E. Vandervort, Dr. William Duvendeck, Pres., Mr. Wesley T. Ridenour, Clerk, Mrs. Charles S. Baker, Mr. William Horr.





MR. TEACHNOR W. SMITH

Principal

Mr. Smith is completing his eighth year as principal at East High School. He received his A. B. degree from Ohio University and his M.A. degree from the University of Cincinnati. Prior to becoming principal, Mr. Smith taught Chemistry and Physics at East High.

Last Spring East High was admitted as a member of the North Central Association of Colleges and Secondary Schools. Graduates of East High are therefore entitled to all rights and privileges that this crediting association grants to member schools.

The students and faculty respect and admire Mr. Smith's ideals and attitude toward maintaining and advancing the high standards of East High School.

Mr. Smith is also Co-Sponsor of the Student Council.



MISS BETTY LAVENDER

Secretary



MISS HELEN M. TAYLOR

Dean of Girls

Miss Taylor is completing her ninth year as Dean of Girls at East High School.

She received her A.B. degree at Miami University and her M.A. degree from Ohio University.

Miss Taylor is Girls' League Sponsor, Co-Sponsor of the Hi-Y, and Co-Sponsor of the Student Council. Also this year she took the responsibility of sponsoring the annual yearbook for which the Seniors are very grateful.

The students respect and admire Miss Taylor's counseling in their personal academic problems.





JOHN C. STEVENSON

Denison University, Ohio State University, National University of Mexico, A. B. and M. A.; Latin, English, Spanish.

CHRISTINE HERR

Sargent School of Boston University, Ohio University, Western Reserve University, B.S.; Librarian, Physical Education.

ELIZABETH WHITEHOUSE

Eastern Kentucky State Teacher's College, A. B., George Peabody College For Teachers, M.A.; English, American Problems.

AUGUSTA JACOBS

University of Cincinnati, B.S.; Typing, Business Law, Book-keeping.

ALENE SCOTT

University of Kentucky, A.B.; Shorthand, Business Information, Business English, English.



JOHN FUGITT

Ohio State University, B.S.;  
Industrial Arts, Head Coach.

ESTELLA WELTY  
THOMPSON

Wooster College, Ph. B., At-  
tended Ohio State, Madison,  
Wisconsin; Home Economics.



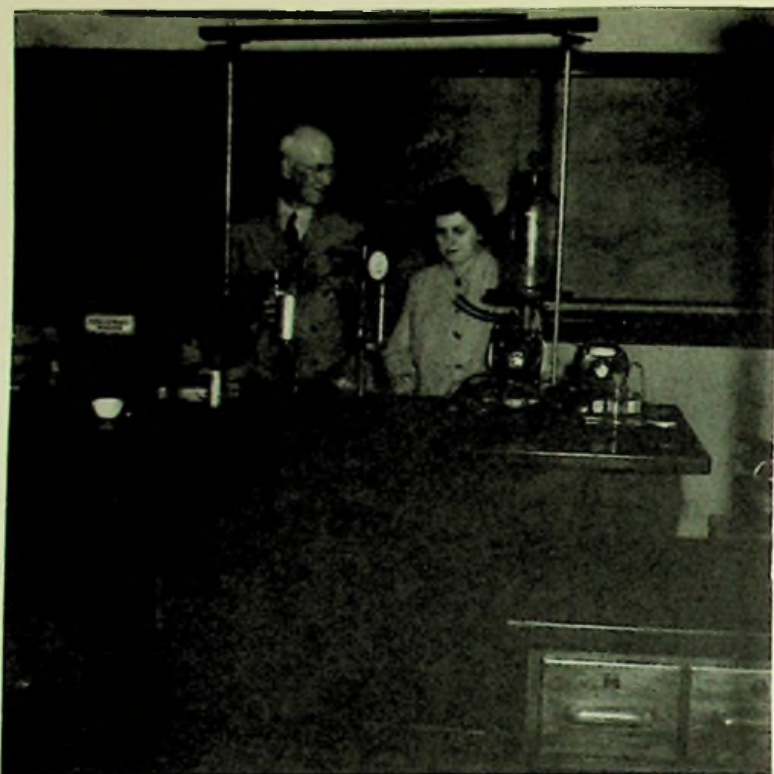
ELOISE COLE

Ohio University, B. S., At-  
tended Cincinnati College of  
Music.

WILLIAM VIEWEG

Dana Music Institute, Youngs-  
town College, B.S.; Band.





**A. KIRK WHEELER**

Denison University, B.S.; Plain  
Geometry, Algebra, Physics.

**ALICE J. YOUNGMAN**

Ohio University, B.S.; Chem-  
istry, Biology, General Sci-  
ence.

**EDWARD L. POGUE**

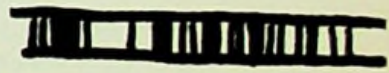
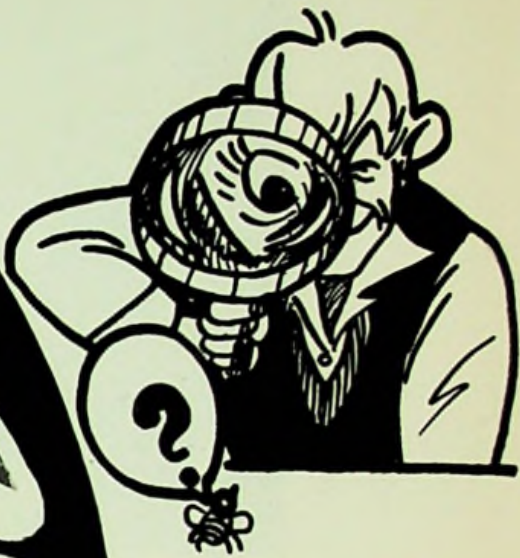
Hanover College, B.S.; Civics,  
American History, Physical  
Education, Ass't. Basketball,  
Football Coach, Head Base-  
ball Coach.

**HERMAN SCHOMBURG**

Holbrook College, A.B.; World  
History, English, Ass't. Coach.



# SEASIDE



JOHNSON  
JOHNSON





## *Senior Class Officers*

President . . . . .	.Keith Winters
Vice President . . . . .	Sonny Hoskins
Secretary . . . . .	Joan Arthurs
Treasurer. . . . .	Paul Kent

K. WINTERS

S. HOSKINS

J. ARTHURS

P. KENT



# Senior Class

Graduation pictures were taken at Arrow's during the first week in November.

As Student Council representatives, Pansy Goheen was representing Room 21 and Garnet Russell from Room 22.

Announcements and name cards were chosen from the Josten Company.

The Class held two dances.

The Annual Staff gave a re-presentation of the Junior Class Play on November 24.

Mr. Schomburg, Miss Scott, and Miss Taylor were Class advisors.

Barbara Hayward conducted sales of Annuals, which were sold on the installment plan.

Six girls were nominated for the homecoming queen. They were: Betty Holbrook, Freida Kuhner, Caralyn Shoemaker, Barbara Hayward, Janice Brown, and Joan Arthurs. Caralyn Shoemaker was chosen queen and Freida Kuhner, senior attendant.

**JEANNE ALLARD**  
"Jeanne"  
Glee Club--1,2;  
Girls' League--4;  
McDermott--3,4.



**JOAN ARTHURS "Jo"**  
Glee Club--1,4;  
Girls' League--1,2,4;  
Cheerleader--2,3,4;  
Student Council--2;  
Scholarship Team--1,2;  
Junior Class Play--  
"Beauty and the Beef";  
Beef";  
Latin Club Assembly  
--2;  
Y-Hi--4;  
Hi-Y Tartan Staff--4;  
Waitress at Prom--2;  
Class Officer--  
Vice Pres.--1,2;  
Secretary--4  
Annual Staff Play--4;  
Honor Society--4.



**CHESTER ARTIS "Terry"**  
Hi-Y--4; Spanish Club--3,4; Spanish Play--3.



**JOHN ALLEN BENNETT "Ton Jon"**  
Science Club--1,2; Hi-Y--2,3,4; Spanish Assembly  
3,4; Junior Class Play--"Beauty and the Beef";  
Hi-Y Officer--4; Annual Staff Play.





GLENN BRADBURY "Brad"  
 Spanish Club--3,4; Student Council Assembly--3;  
 Spanish Dance Committee--3.



JANICE LEE BROWN "Leroy"  
 Drum Major--1,2,3,4; Y-Hi--3,4; Y-Hi Officer--4;  
 Girls League--1,2,3,4; Student Council Assembly  
 --3; Junior Class Play--"Beauty and the Beef";  
 Operetta--4; Glee Club--1,2,3,4; Prom Committee  
 --3; Float Committee--4; Band Officer--4; Annual  
 Staff Play--4; Waitress at Prom--2; Annual Staff.

PAUL EDWARD CAULEY  
 "Kibo"  
 Spanish Club--3,4;  
 Hi-Y--3,4;  
 Junior Class Play--  
 "Beauty and the  
 Beef";  
 Spanish Assembly--3;  
 Football Manager--3.



BETTY RUTH CHAPMAN  
 "Cueball"  
 Band--1;  
 Glee Club--2.



EDITH COLLINS  
 "Edie"  
 Glee Club--1,2;  
 Girls' League--1,2,3,4;  
 Junior Class Play--  
 "Beauty and the  
 Beef";  
 Annual Staff Play--4.



MAURICE CREMEANS JR.  
 "Mort"  
 Wheelersburg High  
 School--1,2;  
 Basketball--3;  
 Hi-Y--4;  
 Hi-Y Tartan  
 Staff--4.



ROBERT DEVER "Bob"  
 Football--1,2,3,4; Hi-Y--2,3,4; Basketball--  
 1,2,3,4; Hi-Y Officer--3; Hi-Y Tartan Staff--3;  
 Latin Club--2; Prom Committee--3; Spanish Club  
 --3,4; Glee Club--1,2,3; Junior Class Play--  
 "Beauty and the Beef"; Scholarship Team--1,2,3;  
 Annual Staff Play



DOROTHY EMORY "Dot"  
 Cheerleading--4; Junior Class Play--"Beauty and  
 the Beef"; McDermott--2; Junior Attendant; Girls'  
 League--1,3,4; Glee Club--1,3,4; Annual Staff  
 Play; Operetta--"Nifty Shop"--3.





**WILLIAM EVANS "Bill"**  
 Football--1, 2, 3, 4; Baseball--2, 3, 4; Basketball--1, 2, 3, 4; Spanish Club--3, 4; Junior Class Play--"Beauty and the Beef"; Spanish Assembly--3, 4; Hi-Y--3, 4; Annual Staff Play--4.

**PANSY GOHEEN "Pan"**  
 Glee Club--1, 2, 4; Girls' League--1, 2; Student Council--Sec., 4; Float Committee--4; Tartan Staff--4; Hall Monitor--4.



**DOROTHY GRASHEL**  
 "Dot"  
 Waitress at Prom--2;  
 Operetta Usherette--4.



**RICHARD HARMON**  
 "Dick"  
 Basketball--1, 2, 3, 4;  
 Baseball--3, 4;  
 Junior Class Play--"Beauty and the Beef";  
 Hi-Y--2, 3, 4;  
 Track--3.

**BARBARA LOU HAYWARD**  
 "Barb"  
 Girls' League--1, 2, 3, 4;  
 Glee Club--1, 2;  
 Prom Committee--3;  
 Concession Committee--3;  
 Y-Hi--4;  
 Hi-Y Tartan Staff--4;  
 Annual Staff--4;  
 Junior Class Play--"Beauty and the Beef";  
 Waitress at Prom--2;  
 Float Committee--4;  
 Hall Monitor--3, 4;  
 Annual Staff Play--4;  
 Honor Society--4.



**JOSEPH G. HIBBITTS "Joe"**  
 Brandon High School--1;  
 Basketball--2, 3, 4;  
 Baseball--3, 4;  
 Junior Class Play--"Beauty and the Beef";  
 Band--2, 3, 4;  
 Band Officer--4;  
 Hi-Y Tartan--3, 4;  
 Hi-Y--3, 4;  
 Prom Committee--3;  
 Concession Committee--3;  
 Latin Club--2;  
 Spanish Club--3, 4;  
 Latin Club Assembly--3, 4;  
 Baseball--2, 3, 4;  
 Annual Staff Play--4;  
 Annual Staff.



**BETTE HOLBROOK "Stinky"**  
 Glee Club--1, 2, 3, 4; Y-Hi--4; Girls' League--1, 2, 3, 4; National Honor Society--3, 4; Student Council--3, 4; Class Officer--1, 2, 3; Treasurer; Marching Corp--3; Prom Committee--3; Athens Year Book Conference--3; Tartan Staff--4; Junior Class Play--"Beauty and the Beef"; Concession Stand--3; Annual Staff Play--4; Waitress at Prom--3; Student Council Officer--Pres., 4; Float Committee--4; Hall Monitor--4; Annual Staff--3, 4; Student Council Assembly.

**RAMEY N. HOSKINS "Sonny"**  
 Football--1, 2, 3, 4; Basketball--1, 2, 3, 4; Baseball Mgr.--3; Scholarship Team--1, 2, 3; Junior Class Play--"Beauty and the Beef"; Hi-Y Sec.--3; Class Officer, Vice Pres.--4; Track--3, 4; Hi-Y Tartan Staff--4; Prom Committee--3; Annual Staff Play--4; Concession Committee--3; Latin Club--1, 2; Spanish Club Council--4; Latin Assembly Play--2; Glee Club--3, 4; Spanish Club--4; Annual Staff--4; Honor Society--4.





JOYCE HUGHES "Brain"  
National Honor Society--3,4; Girls' League--1,2,3,4; Latin Club--1,2; Spanish Club--3,4; Latin Club Assembly--3,4; Annual Staff Play--4; Concession Committee--3; Junior Class Play--"Beauty and the Beef".

DONALD IMES "Professor Imstein"  
Football--1,2,4; Hi-Y--3,4; Glee Club--4; Operetta--"Rose of Danube"--4; Junior Class Play--Stage Hand; Prom Committee--3; Annual Staff--4; Tartan Staff--4; Student Council Assembly--3; Annual Staff Play--4; Float Committee--4.

ELWOOD JACKSON  
"El"  
Hi-Y--4;  
Spanish Club



DONALD R. JOHNSON  
"Don"  
Craddock High School--1;  
Tartan Staff--3,4;  
Hi-Y--3;  
Little Theatre Poster Contest (winner)--4;  
Athens Yearbook Conference--3;  
Annual Staff.

CAROLYN JONES  
"Jonesey"  
Girls' League;  
Glee Club--1,2,3,4.



JANET KEEN "Jan"  
Glee Club--1;  
Latin Club--1,2;  
Latin Club Assembly--2;  
Girls' League--1,2,3,4;  
Prom Committee;  
Y-Hi--3,4;  
Junior Class Play--"Beauty and the Beef";  
Y-Hi Officer,  
Vice Pres --4;  
Hi-Y Tartan Staff--4;  
Concession Committee--3;  
Annual Staff Play--4;  
Float Committee--4;  
Waitress at Prom--3;  
Annual Staff;  
Honor Society--4.

PAUL KENT "Podge"  
Class President--1; Class Treasurer--4; Football--1,2,3,4; Basketball--1,2,3,4; Track--2,3,4; Honor Society--3,4; Spanish Club--3,4; Student Council--3; Hi-Y--2,3,4; Junior Class Play--"Beauty and the Beef"; Annual Play--4; Latin Club--1,2; Prom Committee--3; Scholarship--1,2,3; Hi-Y Tartan Staff--1; Concession Committee--3; Spanish Club Council; Latin Assembly.

WANDA KIDD "The Kidd"  
South Webster High School 3.





**CHARLES KINKER "Chuck"**  
 Basketball--1,2,3,4; Football--1,2,3,4; Hi-Y--  
 2,3,4; Spanish Club--4; Junior Class Play--  
 "Beauty and the Beef"; Basketball Mgr.--2,3;  
 Hi-Y Tartan Staff--3; Annual Staff Play--4.



**DANNY G. KINKER "Dan"**  
 Football--3,4; Student Council--2,3; Hi-Y--2,3,4;  
 Hi-Y Vice President--3; Hi-Y Tartan Editor--3;  
 Class Officer, Pres.--3; Prom Committee--3; Honor  
 Society--3,4; Latin Club--1,2; Track--3,4; Scholar-  
 ship Club--1,2; Spanish Club Assembly--3; Latin  
 Club Assembly--2.



**FREIDA KUHNER**  
 "Hooter"  
 Band--1,2,3,4;  
 Girls' League--1,2,4;  
 Student Council--4;  
 Latin Club Assembly--2;  
 Junior Class Play--  
 "Beauty and the  
 Beef";  
 Prom Committee--3;  
 Queen Attendant--4;  
 Annual Staff Play--4;  
 Tartan Staff--4;  
 Waitress at Prom--2;  
 Annual Staff;  
 Honor Society--4.



**NAOMI LAVECK**  
 "Shorty"  
 Waitress at Prom--2;  
 Usherette at  
 Class Play--4.



**DON LAVENDER**  
 "Abe"  
 Annual Staff  
 Play--4.



**JUANITA LOWE**  
 "Nita"  
 Glee Club--1,2,3;  
 Girls' League--  
 1,2,3;  
 Spanish Assembly--  
 3,4.



**LEWIS MADDIX "Louie"**  
 Latin Club--1,2; Spanish Club--1,2.

**DON MARTIN "Don-Ya"**  
 Baseball--3,4; Glee Club--1,2.



PATRICIA AVANELLE MARTIN "Pat"  
Glee Club--1,2,4; Girls' League--1,2,3,4.

ADAIR MAULT "Rosco"  
Band--1,2,3,4; Latin Club--1,2.



EDWARD MC MEANS  
"Mac"  
Band--1,2,3;  
Glee Club--1,3;  
Football--  
Baseball--  
Tartan Staff--4;  
Army--2 years.

JOAN MC NELLY  
"Jo"  
Girls' League--  
1,2,3,4;  
Usherette for  
Junior Class  
Play--3;  
Concession Stand--  
3;  
Usherette for  
Operetta--3;  
Waitress for  
Prom--2.



LOIS JEAN MEYER  
"Sis"  
Flag Bearer--2,3,4;  
Y-Hi--3,4;  
Girls' League--  
1,2,3,4;  
Spanish Club--3,4;  
Spanish Club  
Assembly--3.

GEORGE MILLER  
"Radar"

GEORGE MOYER "Pierre"  
Stage Manager in Class Play--3; Annual Staff--4.

MARY ELIZABETH MYERS "Sissy"  
Glee Club--1,2,3,4; Girls' League--1,2,3.





DELORIS NICKEL "Dody"  
 Band--3; Girls' League--4; Spanish Club--3; Glee  
 Club--1,2,3; Prom Committee--3; Concession Com-  
 mittee--3.

EARL RAY NOXSEL "Ray"  
 Junior Class Play--"Beauty and the Beef"; Spanish  
 Club--3; Hi-Y--3,4; Prom Committee--3.



PATRICIA ANN PACKARD  
 "Pat"  
 Band--2,3,4;  
 Band Officer--4;  
 Glee Club--1,2,4;  
 Girls' League--1,2,3,4;  
 Usherette at Band  
 Concert--1;  
 Marching Corp--1;  
 Prom Committee--3;  
 Concession Committee  
 --3;  
 Waitress at Prom--3;  
 Junior Class Play--  
 "Beauty and the Beef";  
 Annual Staff Play--4;  
 Annual Staff.



GRETA PATRICK  
 "Pat"  
 Glee Club--1,2,3;  
 Girls' League--  
 1,2,3,4;  
 Girls' League  
 Officer--4;  
 Prom Committee--3;  
 Concession  
 Committee

MARY PEACH  
 "Peachie"  
 Glee Club--1,2;  
 Girls' League,  
 Officer--4;  
 Scholarship  
 team--2,3;  
 Annual Staff--4;  
 Honor Society--4.



RUBY ROBERTS  
 "Rickey"  
 Girls' League--  
 1,4;  
 Glee Club--1.



GARNET RUSSELL "Gus"  
 Glee Club--1,2,4; Girls' League--1,2,3; Y-Hi--4;  
 Concession Committee--3; Student Council--4.

THELMA RUTH SALSBUURY "Sue"





HELEN SCHWAMBERGER "Liz"  
 Girls' League--1,2,3, Sec. 4; Y-Hi--Sec. 4; Flag Bearer--2,3,4; Spanish Club--3,4; Student Council Assembly--3; Glee Club--1,2,3,4; Spanish Club Assembly--3,4; Junior Class Play--"Beauty and the Beef"; Prom Committee--3; Concession Committee--3; Operettas--3,4--"Margie Goes Modern", 3; "Rose of the Danube", 4; Hi-Y Tartan Staff--4; Annual Staff--4; Annual Staff Play--4; Science Club--1; Prom Waitress--2; Float Committee--4; Honor Society--4.

FAYE FRAZEE SHERMAN "Faye"  
 Glee Club--1,2,3; Y-Hi--3,4; Class Officer--Secretary--1; Prom Committee--3; Girls' League--1,2,4; Hi-Y Tartan Staff--2; Times Reporter; Student Council--2; Junior Class Play--"Beauty and the Beef"; Latin Assembly--2; Student Council Assembly--3; Annual Staff

LESTER SHIVELY  
 "Scaf"  
 Junior Class Play  
 --"Beauty and the Beef";  
 Hi-Y--3,4;  
 Prom Committee  
 --3;  
 Float Committee  
 --4



CAROLYN SHOEMAKER  
 "Pat"  
 Glee Club--1,2,3,4;  
 Junior Class Play--  
 "Beauty and the Beef";  
 Girls' League--2,3;  
 Y-Hi--4;  
 Waitress at Prom--2;  
 Queen--4;  
 Queen Attendant--1;  
 Girls' League  
 Officer--4.

LUCILLE SKEENS  
 "Cille"  
 Glee Club--1,2;  
 Junior Class Play--  
 "Beauty and the Beef";  
 Girls' League--1,2;  
 Usherette for  
 Operetta--2;  
 Waitress at Prom--2



ADRIAN SLOAN  
 "M.P.O."  
 Wheelersburg High  
 School--1;  
 Spanish Club--  
 2,3;  
 Band 2,3,4;  
 Librarian--3;  
 Scholarship  
 Team.

BETTY LOU SMITH "Betts"  
 Glee Club--1,2,3; Girls' League--1,2,3,4; Annual Staff--4; Usherette--2.

CAROLYN FRANCES STARRETT "Fanny"  
 Concession Committee--3; Class Officer--2, Secretary; Glee Club--1,2,4; Girls' League--1,2,4; Cheerleader--2,3.





GRETCHEN TOMLIN "Tommy"  
 Girls' League--1,2,3,4; Glee Club--1,2; Usherette  
 Junior Class Play; Waitress at Prom.

KATHERINE VEACH "Katie"  
 Glee Club--1,2,3,4; Latin Club--1; Spanish Club  
 --1; Girls' League--3; Spanish Club Assembly--4;  
 Operetta--"Rose of the Danube", 4.



MARY CATHERINE WADDELL  
 "Catherine"  
 Glee Club--1,2,3,4;  
 Queen Attendant--2;  
 Spanish Club--3,4;  
 Girls' League;  
 Spanish Club Assembly.



COLLEEN WILLIAMS  
 "Connie"  
 Spanish Club--3;  
 Glee Club--1,4;  
 Girls' League--  
 1,2;  
 Spanish Assembly  
 --3.

JOAN WILLIAMS  
 "Jo"  
 Girls' League--  
 --1,2,3;  
 Glee Club  
 1,2,3,4;  
 Cheerleader  
 2,3,4;  
 Prom Committee  
 --3;  
 Y-Hi--3,4.



LESLIE WILSON  
 "Butch"  
 Hi-Y Tartan  
 Staff--3,4;  
 Prom Committee--3;  
 Concession  
 Committee--3;  
 Band--1,3,4;  
 Hi-Y Officer--  
 Treas.  
 Spanish Club--4;  
 Junior Class Play  
 --"Beauty and  
 the Beef";  
 Glee Club--  
 1,2,3,4.



KEITH WINTERS "Sonny"  
 Latin Club--1,2; Spanish  
 Club Assembly--2; Latin Club--1,2; Spanish  
 Club Assembly--3,4; Prom Committee--3; Concession  
 Committee--3; Student Council Assembly--3; Hall  
 Monitor--3,4; Junior Class Play--"Beauty and the  
 Beef"; Student Council Officer--3; Hi-Y--2,3,4;  
 Hi-Y Officer--4; Class Officer--4; District Hi-Y  
 Officer--4; Tartan Staff--4; Float Committee--4.



## *Junior Class Officers*

President . . . . . James Tipton  
 Vice President . . . . . Carl Bussey  
 Secretary . . . . . Mary Millhuff  
 Treasurer . . . . . Davida Fannin

The advisors of the Junior Class were, Mr. E.L. Pogue, Miss E. Whitehours, and Miss C. Heer.

Since the officers were elected in the latter part of the Sophomore year, the class was early in beginning its work for 1948-1949.

The class operated the Allard Park concession stand at all home football games. The committee consisted of Clarice Reinhardt, Joan Faine, Norma Meek, Helen Kemp, Ralph Mays, and various other helpers. This project proved itself worthy of its' cause.

The annual Curtiss Magazine sale contest, conducted by the three Junior Home Rooms, resulted in a grand total of \$283.25 of subscriptions. Home Room 27 won the prize for the most sales and Mary Millhuff lead the classes with \$82 worth of sales, therefore, she was awarded the high honor.

On December 15, the class received their class rings from The Herff-Jones Company.

The Junior Class selected as their class play, given March 31, and April 1, "We Shook the Family Tree," by Hildegard Dolson.

The biggest event of the year was the Prom given May 20, in honor of the graduating Seniors. The Prom Committee consisted of: Chairman, Ralph Mays, Co-Chairman, Mary Millhuff, Decoration Committee, Jerry Imm, Clarice Reinhardt, Orchestra Committee: Pat Taulbee, Invitation Committee: Ann Fannin and Margaret Arthurs, Refreshment: Joyce Christy, Joan Faine, Ways and Means-Dates: Carl Bussey, Helen Kemp, Waitress Committee: Margaret Hackworth and Buddy Dudit, Clean Up: All Juniors.

The play committee consisted of Helen Kemp and Joan Smith, Mary Mougey, Margaret Arthurs, Ralph Mays, Buddy Dudit, and Jerry Imms.





ROW ONE: Joyce Cristy, Roy Charles, Margret Arthurs, Orville Garrett, Jo Anne Faine, Don Ford, Marilyn Clemens, Philip Bowling. ROW TWO: Garnet Moore, Elza Fraley, Jack Brumfield, Blaine Gilliland, Helen Kemp, Mary Millhuff, Ann Fannin, Margret Hackworth, Davida Fannin, Beverly Kinker, Jerry Imm, Doran Conrad, Sonny Coriell. ROW THREE: Clyde Meadows, John Kitchen, Grant Elliott, Buddy Dudit, Ralph Mays, Ralph Jenkins, Carl Bussey, Don Atkins, Ray Bolton, Dick Hoskins, Paul Hughes.

ROW ONE: Margret Plummer, Joanne Smith, Norma Meek, Clarice Reinhardt, Wilma Ramey, Pat Taulbee, Nellie Miller, Norma Prince, Patsy Risner. ROW TWO: Bob Patrick, Ernestine Maggard, Mary Mougey, Norma Williams, Elsie Williams, Lucille Shonkwiler, Gladys Percell, Nadine Ramey, James Tipton, Richard Snodgrass. ROW THREE: Robert Wilson, Owen Sperry, James Steele, Carl Warner, Shelby Rigsby, Paul Paige, Frank Wentte, Dale Summers, Clell Whit, Roy Vance.







## *Sophomore Class Officers*

President . . . . .	Charles Veach
Vice President . . . . .	Betty Baldrige
Secretary . . . . .	Lois Stewart
Treasurer . . . . .	Wanda Fankel

The Sophomore Class of 48-49 held their first meeting on September 29, 1948.

Officers were chosen and dues were set at fifty cents a semester.

Class advisors were: Mr. Wheeler, Miss Jacobs, and Miss Cole.

Activities for raising money included a rummage sale on October 9, and a bake sale on November 20.

The Sophomore assembly was given on March 2.

The dance was held on March 25th. Candy, pop corn, and soft drinks were sold.

Harold Etterling, Charlotte Frazee, and Bob Welch represented the Sophomore Class on the Student Council.

The Queen's Sophomore Attendant was Betty Kemp.

Reserve cheerleaders chosen from the Sophomore Class were: Janice Ervin, Wanda Fankell, and Lois Stewart.





ROW ONE: Juanita Allard, Betty Brown, Hazel Bradshaw, Hazel Davis, Betty Baldrige, Erma Campbell, Judy Burke, Wanda Bartee, Maxine Ellifritt. ROW TWO: Yvonne Logan, Bernard Evans, John Etterling, Jim Brady, Janice Erwin, Lila Dudit, Leota Bailey, Jacqueline Brown, Joe Cook, Harold Etterling, Wells Basham, Ramah Frazier, James Hensley, Russell Fankell, Nina Lunsford. ROW THREE: Carl Atkins, Bob Chapman, Joy Jean Frazier, Betty Kemp, Charlotte Frazee, Paul Brigner, Charles Garlinger, Wanda Fankell, Imogene Fannin, Charles Hunter, Rudy Kirk.

ROW ONE: Wanda Winebrenner, Virginia Piquet, Maudie Stiltner, June Snodgrass, Bob Montgomery, Bertha Roof, Ethlyn Ruley, Alice Mault, Normale Taylor. ROW TWO: Bill Pack, Patty Noel, Marlene Slattery, Edna Smith, Phyllis Saunders, Douglas Wallen, Eloise Schafer, Helen Stewart, Norma Mays, Hazel Rudd, Naomi Rucks, Lois Stewart, Sheila Starrett, Larry Pierce. ROW THREE: Charles Montgomery, Clifford Williams, Charles Veach, Bob Welch, Donald Scott, Milo Mullins, Jack Wineka, Gary Wilson, Lonny Medley, Leonard Oliver, Bob Wills, Ernest Roof.







## *Freshman Class Officers*

President . . . . .	Ronald Partridge
Vice President . . . . .	Robert Dortch
Secretary . . . . .	Peggy Evans
Treasurer . . . . .	Harry Scott

R. PARTRIDGE

R. DORTCH

P. EVANS

H. SCOTT





# Freshman Class

The Freshman Class held its first class meeting early in September. The officers elected for the new year were:

Ronnie Partridge . . . . . President  
Robert Dortch . . . . . Vice President  
Peggy Evans . . . . . Secretary  
Harry Scott . . . . . Treasurer

The Freshman assembly was held on March 2, 1949. A play was put on in the assembly. The name of the play was "As Sure as You're Born." The characters in the play were, Peggy Evans, Ruby Lambert, Pat Nardi, Ronnie Partridge, Richard Bussa, and Robert Dortch.

On March 4, the class held its annual dance. The dance committee consisted of Dick Spaulding, Jerry Winebrenner, Harry Scott, Judy Pemberton, Sue Manly, and Wanda Hoskins.

The Freshman class had four representatives on the Student Council. They were Ronnie Partridge, Joyce McClurg, Wallace Evans, and Ronnie Martin.

ROW ONE: Vivian Garrett, Carol Howard, Irma Cooper, George Brown, Richard Bussa, Bob Crabtree, Carol Brown, Bonnie Bear, Virginia Charleton. ROW TWO: Kenneth Ellifritt, Jimmy Grahm, Elwood Compton, Peggy Evans, Darlene Hammond, Willodean Hammond, Patricia Craft, Ramona Fraley, Carol Hutchinson, Wanda Hoskins, Juanita Conley, Marilyn Baer, Esther Coppock, Roger Gammon, Wallace Evans. ROW THREE: Herbert Brown, David Burke, Paul Fraley, Jack Etterling, David Fannin, Wanda Henson, Donald Fitch, Betsy Askins, Bill Essman, Betty Haney, Robert Dortch, Charles Fannin.







ROW ONE: Betty Mustain, Warren Riddlebarger, Regina Pierce, Paul Jackson, Gloria Keller, Franklin Moore, Patricia Nardi, Charles Noel, Faye Maddix, Bill Martin. ROW TWO: Harry Scott, Frank Otworth, Carl Payton, Colleen Kellog, Wanda Kiser, Joan May, Ann Knigge, Betty Montgomery, June Ramey, Jacqueline Kirchner, Janet Ramey, Bill Prince, Roger McMeans, Ruby Lambert, Joyce McClurg. ROW THREE: Ronnie Partridge, Robert Ramey, Sue Manley, Lois Meyers, Helen King, Nettie Jenkins, Margret Russell, Nettie Smith, Lillian Selby, Betty Peach, Marvin Patrick, Robert Kilgallin.

ROW ONE: Esther Seth, Ralph Silcott, Evelyn White, Shurl Shoemaker, Judy Tussey, Roger Sommer, Amy Weidner, Arnold Stevens, Betty Wentz. ROW TWO: Judy Thomas, Sylvia Torges, Judy Sergent, Bonnie Widdig, Barbara Yeley, Opal Ward, Sue Whitt, Bea Ann Wilson, Evon Stevens, Wilma Stephenson, Ruth Sisler. ROW THREE: Don Woodrum, James Williams, Donald Vallance, Jim Porter, Gary Vickers, Gordon Snyder, Jerry Winebriener, David Watts, Richard Spaulding, Branch Carty, Clinton Springer.





SPECIAL



CLASSES

Miss Shackelford and business arithmetic class.



Manual arts class.



House cleaning day in home economics class.





Typing Class



Manual Arts Class

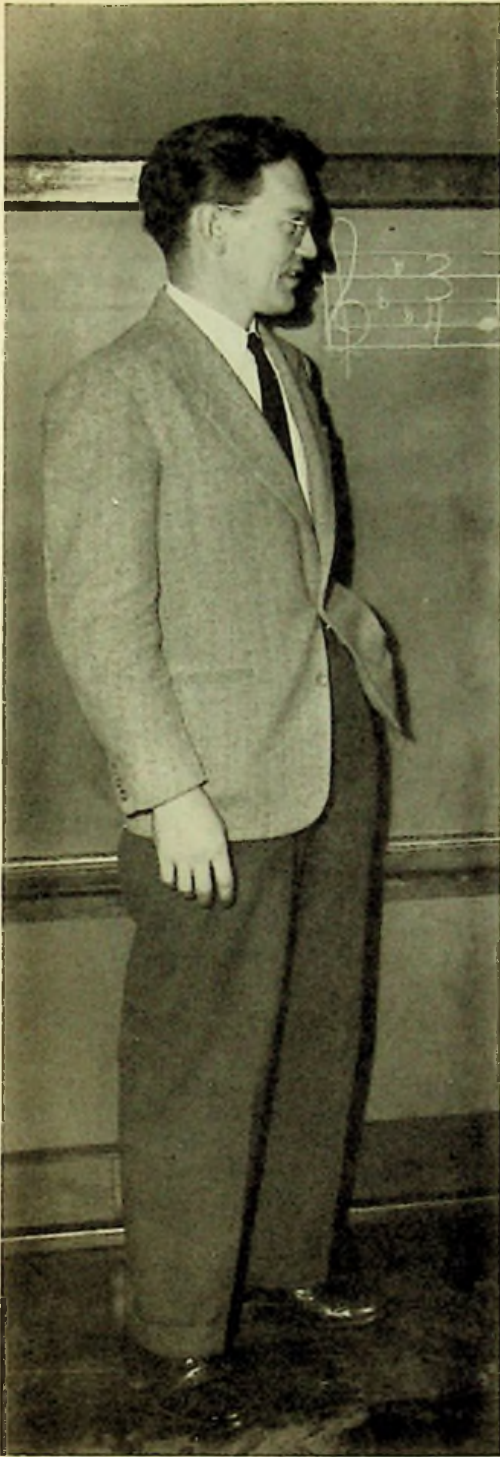


Home Economics Classes



# Special Classes



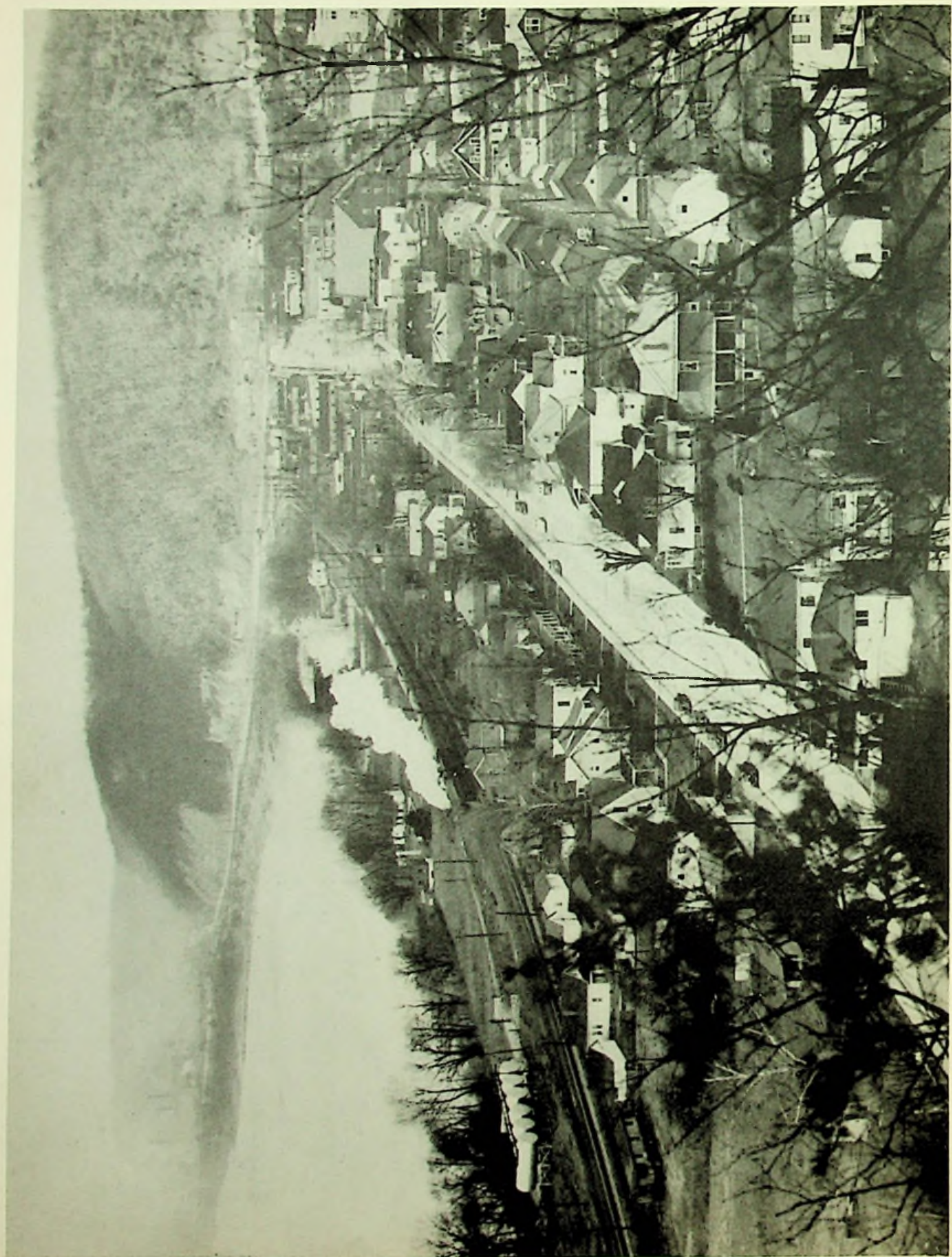


Mr. Caywood Thompson,  
Band Director of East High  
In 1947-1948

IN  
M  
E  
M  
O  
R  
I  
A  
M











DON  
JOHNSON



*The  
Homecoming  
Queen*



FREIDA KUHNER  
Senior  
Attendant



DAVIDA FANNIN  
Junior  
Attendant



BETTY MUSTAIN  
Freshman  
Attendant

BETTY KEMP  
Sophomore  
Attendant



CARALYN SHOEMAKER







Acting Co-Captain Crowning Homecoming Queen At Game.

Acting Co-Captain and Queen at Homecoming Dance.



Queen and Attendants leaving Football Field at Allard Park.





OFFICERS

Janice Brown, Freida Kuhner, Helen Schwamberger, and Janet Keen.

*Tri*  
*Hi-Y*

STANDING: Joan Arthurs, Norma Meek, Garnet Russell, Lois Meyer, Catherine Waddell, Janice Brown, Davida Fannin, Janet Keen, Freida Kuhner. SEATED: Helen Schwamberger, Mary Millhuff, Clarice Reinhardt, Joan Williams, Ann Fannin, Helen Kemp, Joyce Christy, Gladys Percell, Barbara Hayward, Caralyn Shoemaker, Betty Holbrook. ABSENT: Faye Sherman.







OFFICERS

Jerry Imms, James Tipton, Leslie Wilson, John Bennett, and Keith Winters.

*Hi-Y*

STANDING: Sonny Hoskins, Ralph Jenkins, Charles Montgomery, Mr. Stevenson, Roy Vance, Robert Wills, Robert Patrick, Joe Hibbitts, Bob Dever, Don Imes, Dick Hoskins, Bill Evans, Keith Winters, Maurice Crèmeans, Carl Warner, Jack Brumfield, James Tipton. SEATED: Jack Wineka, Buddy Duduit, Earl Noxsel, Ralph Mays, Ramah Frazier, Danny Kinker, Jim Brady, Jerry Imms, Charles Kinker, Leslie Wilson, Eddie Cauley, John Bennet, Elwood Jackson.







## *Hi-Y Tartan Staff*

STANDING: Betty Holbrook, Margaret Arthurs, Margaret Plummer, Mary Mougey, Mary Millhuff, Helen Schwamberger, Jack Tipton, Don Johnson, Jerry Imms. SEATED: Leslie Wilson, Joe Hibbitts, Betty Baldrige, Hazel Bradshaw, Barbara Hayward, Janet Keen, Sue Manley, Joan Arthurs, Normalee Taylor, Keith Winters.

### THE HI-Y

The Hi-Y is a Christian organization composed of Sophomore, Junior, and Senior boys, whose purpose it is to create, maintain, and extend, throughout the home, school, and community, high standards of Christian character.

The candlelight initiation ceremony was held in the Christian Church along with the new Tri-Hi-Y Club. This service helps to illustrate to the new members the true purpose of the clubs.

The Hi-Y was also in charge of the crowning of the Homecoming Queen, Caralyn Shoemaker. She and her court were honored at the game and the following dance. The club also joined with the Tri-Hi-Y and other clubs from surrounding schools, to present a Christmas dance at the Chez Paree for the members and their dates.

Other activities of the Hi-Y include the editing of the Hi-Y Tartan, assembly, Easter Services, and the Christmas scripture readings.

### HI-Y TARTAN

The Hi-Y Tartan is a non-profit service for the students. This year the staff has placed emphasis on feature writings. Most of the typing work was done by the typing class instead of after school. Although the paper has already shown some progress, much is being done to further interest and improvement.



# The Girls' League

The Girls' League was first organized at East High in November of 1939.

Membership is open to any girl in school, particularly to Freshmen and Seniors, as it is the primary purpose of this organization to acquaint the Freshmen with their advanced classmates.

A co-ed dance was sponsored by this group on April 29.

The presiding officers for this year are: Greta Patrick, President; Mary Peach, Vice President; Helen Schwamburger, Secretary; Caralyn Shoemaker, Treasurer.

Miss Taylor is Girls' League advisor.



Tri-Hi-Y Advisors: Miss Scott, Miss Taylor

Greta Patrick, Caralyn Shoemaker, Helen Schwamburger, Mary Peach.







## Cheerleaders

Margaret Arthurs,  
Mary Millhuff, Dorothy Emory, Joan Williams, Ann Fannin, Joan Arthurs.

The six Varsity cheerleaders led the student body in cheers throughout the football and basketball season.

The traditional blue sweaters and white skirts plus a determined enthusiasm made a combination hard to beat in the promotion of the school spirit.

Three Juniors and three Seniors make up the squad. Each year a Junior is elected to preside the following year as captain.



STANDING: Gordon Snyder, David Watts, Chuck Carty, Gary Wilson. SITTING: Rudy Kirkpatrick, Ronnie Martin, Harry Scott, Adair Mault, Bernard Evans.

Janice Ervin, Wanda Fankell,  
Lois Stewart.



## Pep Band

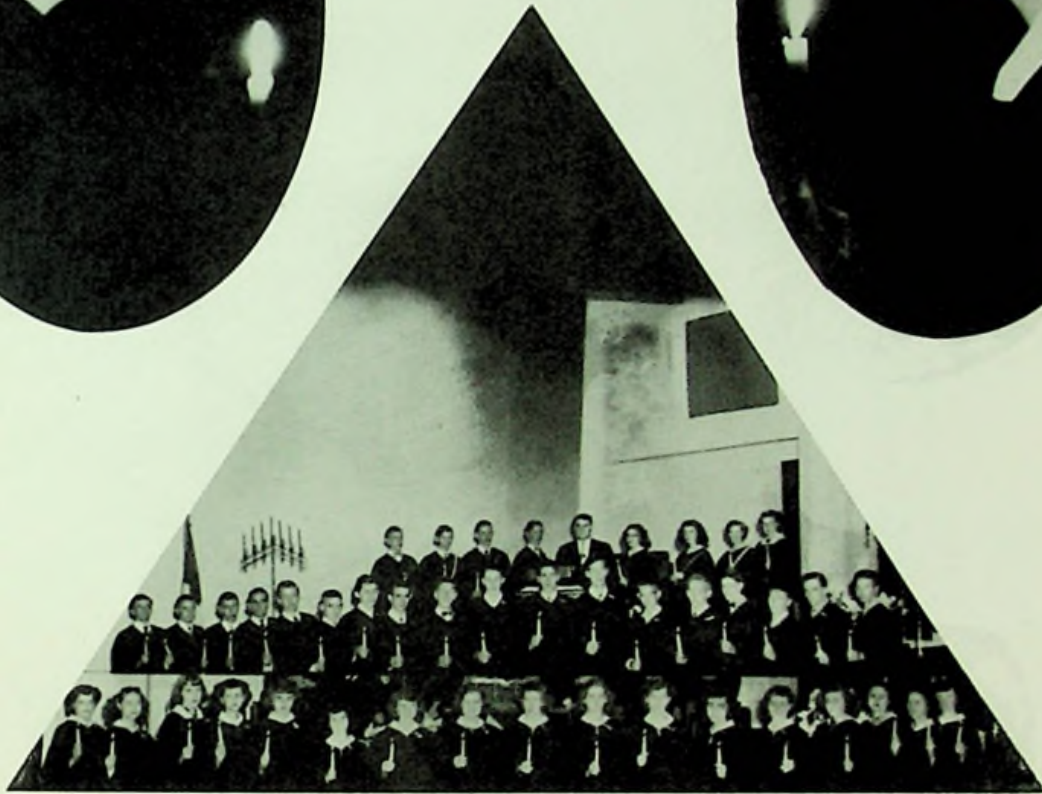
The Pep Band was a new organization added to the school this year.

Under the direction of Chuck Carty, it attended all home games and pep rallies.

It aided the cheerleaders in many school songs and yells.

Through the voluntary efforts of these boys, school spirit was built up to a much higher level.





The candle lighting ceremony is the true initiation into a Christian organization such as the Hi-Y and Tri-Hi-Y. Always there stands that central candle, burning reverently before you, symbolizing the fine examples He set before us. By taking a portion of that light unto himself, a member dedicates to his fellow members, as well as to himself, to become a living example of clean scholarship and sportsmanship. As Jesus said, "Let your light so shine." Each member should let his light shine to uphold the purpose of the Hi-Y and the Tri-Hi-Y.





BETTY HOLBROOK  
Editor

JERRY IMMS  
Associate Editor

DANNY KINKER  
Co-Associate Editor

BARBARA HAYWARD  
Business Manager

JOE HIBBITTS  
Ads Manager



JANICE BROWN  
Assistant Senior Editor

MARY PEACH  
Assistant Activities Editor

JANET KEEN  
Senior Editor

FAYE SHERMAN  
Activities Editor







HELEN SCHWAMBERGER  
Assistant School Life Editor

GEORGE MOYER  
School Life Photographer

FREIDA KUHNER  
School Life Editor

SONNY HOSKINS  
Sports Editor

DON IMES  
Artist

DON JOHNSON  
Artist



BETTY SMITH  
Typist

PAT PACKARD  
Typist





The Spanish Club enjoying a singing lesson.

Lowell Stanley, Howard Taylor, Paul Hughes, Jerry Imm, Beverly Kinker, Joan Faine, Mary Millhuff, Helen Kemp.



Keith Winters, Joyce Hughes, Hazel Bradshaw, Helen Schwamburger, Normalee Taylor.



Lewis Maddix, Sheila Starrett, Buddy Diduit, Catherine Waddell, Bob Dever, Lois Meyer, Paul Kent, Betty Baldrige.

Delegations of students of Spanish came from P.H. S., Washington, Jackson, Ironton, and the Portsmouth Branch of Ohio University.

Again the Club sponsored the annual East High trip to see the Metropolitan Opera in Cleveland. Three alumni went along this time, as well as students and teachers. This trip was made by way of train, and lasted two days.

The Spanish Club Christmas dance was held on December 11.







## *The Latin Club*

The Latin Club were mostly Freshmen this year, but their activities were still vigorous and successful.

On an October Sunday most of the Club and a few parents motored to see the Indian monuments of Serpent Mound and Fort Hill in Adams and Highland Counties.

On Saturday, February 19, seventeen members went to Cincinnati to see the almost perfect performance of the great Greek classical play, "Medea," with the famous actress Judith Anderson in the title role. The group visited the Cincinnati Art Museum that morning and saw the movie, "Joan of Arc" that evening. This trip was made by train.

The Latin dance occurred in February, and the Latin Assembly in May. Bingo was played occasionally during the spring.







Betty Holbrook

### JUNIOR CUP

The Student Council discussed the idea of revising the Junior Cup. The faculty approved and Betty Holbrook was chosen as representing the best all around Junior of 1947-1948. The Cup belongs to her for a year.

Senior Honor Society Members: Paul Kent, Joyce Hughes, Betty Holbrook, and Danny Kinker.







STANDING: Joan Arthurs, Barbara Hayward, Janet Keen, Helen Schwamberger, Freida Kuhner, Mary Peach, Sonny Hoskins, Margaret Arthurs, Helen Kemp, Mary Millhuff, Mr. Stevenson, Miss Walden, and Mr. Smith. SEATED: Paul Kent, Danny Kinker, Joyce Hughes, Bette Holbrook.

## *The Honor Society*

The students were new members of the school's chapter of the National Honor Society this year.

Seven Seniors and three Juniors were nominated for the honor by secret vote of the faculty.

Seniors tapped at the chapter's annual assembly and initiation were: Joan Arthurs, Barbara Hayward, Janet Keen, Freida Kuhner, Ramney Hoskins, Mary Peach and Helen Schwamberger.

Juniors were: Margaret Arthurs, Helen Kemp and Mary Millhuff.

The National Honor Society limits membership to 10 percent of the Senior class and 5 percent of the Junior class, all of whom must come from the upper 20 percent of their groups in scholarship. Consequently, 17 worthy candidates could not be accepted.

Miss Pauline Walden, head of the Scioto County Girl Scout organization and former East High faculty member and National Honor Society sponsor, made the address of the initiation ceremony.

The program was planned by Senior members who were chosen a year ago: Betty Holbrook, Joyce Hughes, Paul Kent and Danny Kinker.





# Band

The band, under the direction of Mr. William Vieweg, has taken an active part in all school activities this year.

At the beginning of the school year, the band formed many half time formations at the football games, and the pep band, composed of eight boys, played at all basketball games.

The band also participated in several parades during the year.

The highlight of the year was when the band came in first place in the Christmas Parade sponsored by the Retail Merchant's Association.

On April 22, the band presented their annual spring concert which was a large success.

The band closed the year by playing for graduation exercises at Allard Park on the evening of June 10.

The band will lose eight Seniors this year.





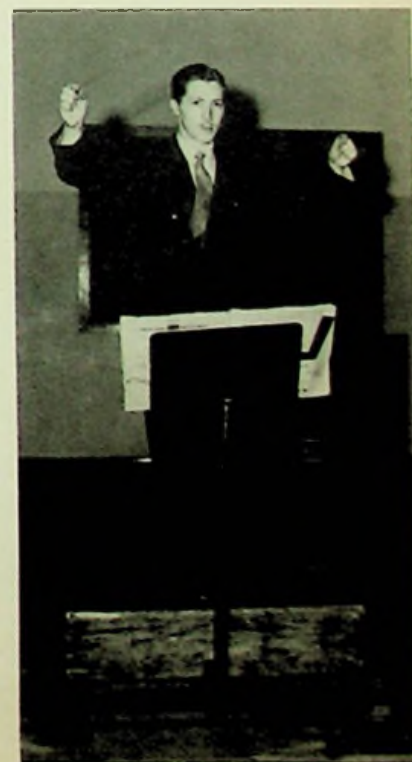


# B A N D

FIRST ROW: Bob Wills, Charles Montgomery, David Watts, Shurl Shoemaker, Gary Wilson. SECOND ROW: Helen Schwamburger, Lois Meyers, Patsy Risner, Esther Seth, Freida Kuhner, Bernard Evans. THIRD ROW: Lila Diduit, Phyllis Saunders, Colleen Kellogg, Pat Packard, Alice Mault, Janice Brown, Mr. Vieweg. FOURTH ROW: Ruby Lambert, Joyce McClurg, Norma Prince, Sylvia Torges, Ronnie Martin. FIFTH ROW: Betty Kemp, Wanda Bartee, Norma Mays, Janice Ervin. SIXTH ROW: Charles McCarty, Joe Cook, Wanda Hoskins, Jim Porter, Margaret Hackworth. SEVENTH ROW; Harry Scott, Lloyd Wilson, Margaret Plummer, Joe Hibbitts, Rudy Kirkpatrick. EIGHTH ROW: Paul Brigner, Gordon Snyder, Charles Garlinger, Ramah Frazier.



JANICE BROWN  
Drum Major



MR. WILLIAM VIEWEG  
Band Director





Margaret Arthurs, James Tipton.



Buddy Dduit, Beverly Kinker, Clarice Reinhardt.

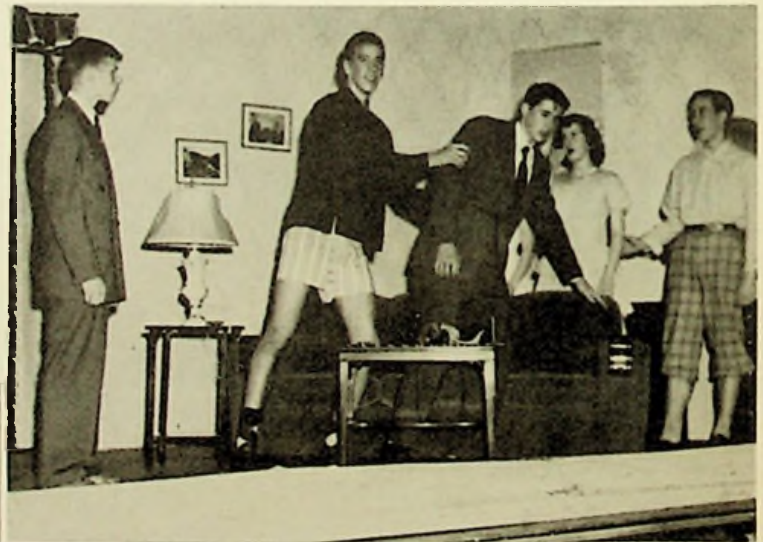
## *We Shook The Family Tree*

This is a story of a typical average American family. Hildegarde Dolson, whose one ambition is to get long pants for her boyfriend, Freddie Shermer, is continually getting into trouble. She is greatly ridiculed by her brothers, and her friends, Ellie-May and Jill, when they find out that Freddie wears knickers. This she finds rather embarrassing and so she decides to do something about it.

Her younger sister, Sally, who tries to help beautify her, recommends that she buy some beauty clay. This she does and all ends well. Including Freddie's being able to get some long pants.

### Characters

Hildegarde . . . Margaret Arthurs  
 Mr. Dolson . . . . . Jerry Imm  
 Mrs. Dolson . . . . . Joan Smith  
 Sally . . . . . Clarice Reinhardt  
 Bob . . . . . Lowell Stanley  
 Jimmy . . . . . Buddy Dduit  
 Paige . . . . . Pat Taulbee  
 Ellie-May . . . Margaret Plummer  
 Jill . . . . . Beverly Kinker  
 Freddie Shermer . . James Tipton  
 Mr. Shermer . . . . Carl Bussey  
 Mrs. Shermer. . . Mary Lou Mougey



Jerry Imm, Lowell Stanley, Carl Bussey, Margaret Plummer, James Tipton.



Carl Bussey, Pat Taulbee, Mary Mougey.





JUNIOR

CLASS  
PLAY

Miss Whitehouse and the cast at play rehearsal.

Ernestine Maggard, Nadine Ramey.

Joan Smith, Jerry Imm





# Glee Clubs

The Glee Clubs of East High School began the year with the musical production "Rose of the Danube," which was given December 18th, 19th, and 20th. December 18th was reserved for the children's matinee, and December 19th and 20th the performances for the adults were given.

Another project planned by the Glee Clubs was an assembly given April 27 in which they presented a program of popular and semi-classical music. There was a variety of numbers such as duets, solos, trios, and chorus numbers.

Also May 27 a spring concert was given by the Glee Clubs in which was featured sacred and popular music.

At the end of the school year the Senior girls provided the musical program for Baccalaureate services.

**STANDING:** Don Imes, Ralph Silcott, Jack Etterling, Robert Dortch, Jim Brady, Marvin Patrick, Doran Conrad, James Tipton, Carl Bussey, Ralph Mays, and Gary Vickers.  
**SITTING:** Donald Vallance, Leslie Wilson, Owen Speary, Jack Brumfield, Clyde Meadows, Buddy Duduit, Jerry Winebrenner, and Howard Taylor.







FIRST ROW: Wilma Ramey, Joanne Faine, Patty Taulbee, Dorothy Emory, Caralyn Shoemaker, Helen Schwamberger, Nellie Miller, Beverly Kinker, Carolyn Jones. SECOND ROW: Carolyn Starrett, Connie Williams, Norma Prince, Pansy Goheen, Mary Mougey, Norma Meek, Mary Meyers, Katherine Veach, Joanne Smith, Greta Patrick, Bette Holbrook. THIRD ROW: Catherine Waddell, Joan Arthurs, Joan Williams, Janice Brown, Margaret Plummer, Margaret Arthurs, Ann Fannin, Ernestine Maggard, Clarice Reinhardt, Garnet Russell.

## *Glee Club*

FIRST ROW: Normale Taylor, Betty Peach, Carol Hutchinson, Bea Ann Wilson, Gloria Keller, Pat Nardi, Amy Weidner, Carol Brown, Marilyn Baer, Helen Stewart. SECOND ROW: Ethlyn Ruley, Lois Myers, Judy Burke, Judy Tussey, Betty Mustain, Evelyn White, Betty Baldrige, Colleen Kellog, Sheila Starrett, Nina Lunsford, Sue Ann Manley, Eloise Schaffer. THIRD ROW: Judy Thomas, Faye Maddix, Wilma Stevenson, Douglas Wallen, Jackie Brown, Charlotte Frazee, Betsy Askins, Leota Bailey, Betty Brown, Maxine Ellifrit, Juanita Conley, Wanda Kisor, Silvia Torges, Evon Stevens, Janet Ramey, Wanda Winebrenner, Peggy Evans. FOURTH ROW: Hazel Rudd, Joan Mays, Marlene Slattery, Judy Sargent, Virginia Charleton, Bonnie Widdig, Bonnie Bear, Margaret Russell, Ann Knigge, Betty Montgomery, Jackie Kirchner, Ruth Sisler, Lois Stewart.







Pat Taulbee and Buddy Duduit.



Helen Schwamberger, Ernestine Maggard, and Charles Montgomery.



Doran Conrad and Janice Brown

Don Imes, Gary Vickers and Robert Dortch.

## Rose Of The Danube

The Operetta which was given December 19 and 20

Queen . . . . .	Ernestine Maggard
King . . . . .	Charles Montgomery
Daisy . . . . .	Helen Schwamberger
Rose . . . . .	Catherine Veach
Belledona . . . . .	Pat Taulbee
Galookshi . . . . .	Buddy Duduit
Mrs. McPhipp . . . . .	Janice Brown
Mr. McPhipp . . . . .	Doran Conrad
Pamela . . . . .	Mary Lou Mougey

### Three Conspirators

Don Imes . . . . .	Count Von Popova
Gary Vickers . . . . .	Dimetrius
Robert Dortch . . . . .	Trombonius
Karl . . . . .	Jack Brumfield
Darrell Davis . . . . .	Jack Tipton

Jack Brumfield, Mary Mougey, Catherine Veach, and Jack Tipton.







STANDING: Carl Bussey, Joyce McClurg, Freida Kuhner, Charles Veach, Jerry Imm, Bob Welch, Ronnie Partridge, Keith Winters, SEATED: Helen Kemp, James Tipton, Clarice Reindhardt, Nina Lunsford, Betty Holbrook, Pansy Goheen, Garnet Russell, Charlotte Frazee, Ronnie Martin, Wally Evans.

## *The Hall Monitors*



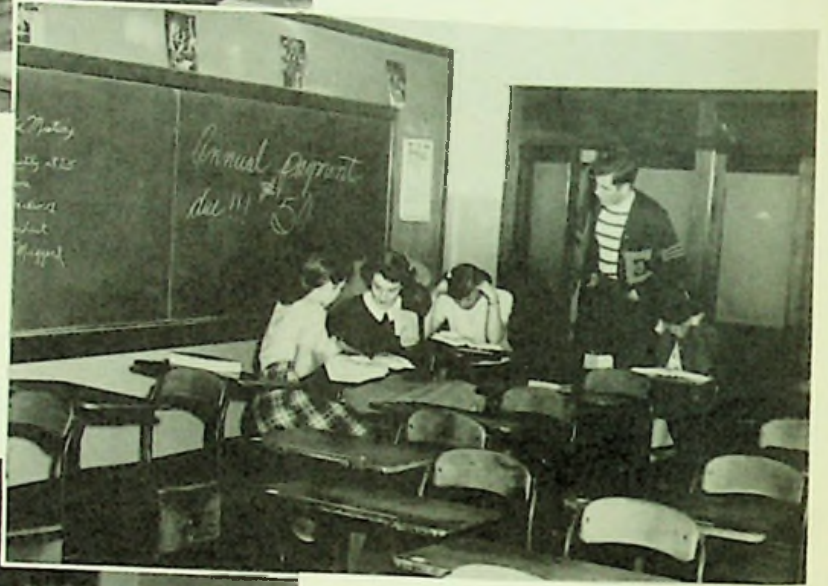
Officers: Pansy Goheen, Nina Lunsford, Carl Bussey, Betty Holbrook.





*Annual*

*Staff*



*At*

*Work*







DON JOHNSON



# THE PROM



"Bo" Monday's Orchestra



E. Noxsel, R. Fraley, L. Edwards, F. Matheny, L. Covert, J. Whitt, P. Packard.

## JUNIOR-SENIOR PROM

On May 28, 1948, East High School held their annual Junior-Senior Prom, which was given in honor of the Seniors.

The dance was held at Harding Gym between the hours of 8:30 and 11:30.

The decorative theme of the prom was carried out to resemble the New Orleans' Mardi Gras. The gym was hung with paper streamers bright colored balloons, and half masks.

The music was furnished by "Bo" Monday's orchestra from Ohio University.

Entertainment was given during intermission after which confetti and balloons showered the auditorium.



J. Hughes, B. Holbrook, K. Winters.







D. Martin, G. Moyer, P. Kent,  
J. Brown, H. Schwamberger, A.  
Slater, S. Hoskins, J. Taylor.



Mr. and Mrs. Schomburg.



Miss Helen Taylor.

D. Emory, P. Milhuff; Mask  
Waitress -- G. Percell, D.  
Fannin.





# The Christmas Dance



L. Stanley turns Mexican in a game of pinata.



Santa reads his letters to all the little boys and girls.

The annual Christmas dance was held on December 19, 1948, by the Spanish Club.

During the dance the first and second year Spanish students portrayed several Spanish dances and played Spanish games.

Some of the parents were there. On the whole the dance was a huge success.



Everyone joins in the "Conga Line."



J. Brown and B. Holbrook tell Santa (J. Schwamberger) what they want for Christmas.





Dick Butler  
Chandler's Aid

James Richardson  
Pres. Booster's  
Club

A. B. Chandler Dr. Wm. Duvendeck  
Commissioner Pres. School Board  
of Baseball



L. Stewart, H. Schwamberger,  
O. Felts, A. B. Chandler.



Mr. T. W. Smith, Mrs. T. W.  
Smith, Dean H. Taylor, M.  
Wellman, A. Jacobs, E. Cole.



B. Hayward, J. Keen, C. Rein-  
hardt, J. Christy.



P. Kent, J. Christy, S. Hoskins,  
C. Shoemaker, C. Reinhardt, J.  
Steele.



B. Dever, M. Millhuff, J. Er-  
vin, C. Kinker.

FOOTBALL  
•  
BASKETBALL  
•  
BANQUET  
•

'49



Basketball and football players.





Music from the bands of virtually all high schools in the county and city heralded the arrival of the pre-Christmas season. Several beautiful floats depicting the Yultide themes set backdrops for Santa's show.

The East High School float received third prize. It portrayed the "Peace on Earth" theme with a giant angel with out-stretched hands. Around her feet were girls dressed in native costumes of peoples of the United Nations.

The East band received first prize. The judging of the bands was done on marching precision and cadence, uniforms, instruments and music.

## HOLIDAY PARADE







WEEK  
END  
AFFAIR!



J. Winebrinner, R.  
Lambert.



G. Elliot, R.  
Pierce.

D. Imes, Janice  
Brown.







(1) C. Veach, B. Wilson, D. Vallance, I. Fannin, F. Maddix.

(2) J. Arthurs, D. Fannin, G. Russel, B. Hayward, B. Holbrook, C. Waddell, N. Meek, C. Shoemaker, A. Fannin, M. Millhuff, J. Christy, R. Rienhart, H. Kemp.



(3) P. Goheen, M. Mays, Y. Logan, W. Stevenson, J. Conley.



# ODDS & ENDS

(5) M. Meyer, L. Skeens, R. Roberts, M. Peach.



(6) F. Maddix, I. Fannin, B. Wilson, B. Holbrook, J. Wenika, K. Winter, C. Montgomery, J. McClurg, B. Baldrige, N. Lunsford, B. Wilson.



(4) R. Mays, J. Tipton, G. Wilson, L. Maddix.







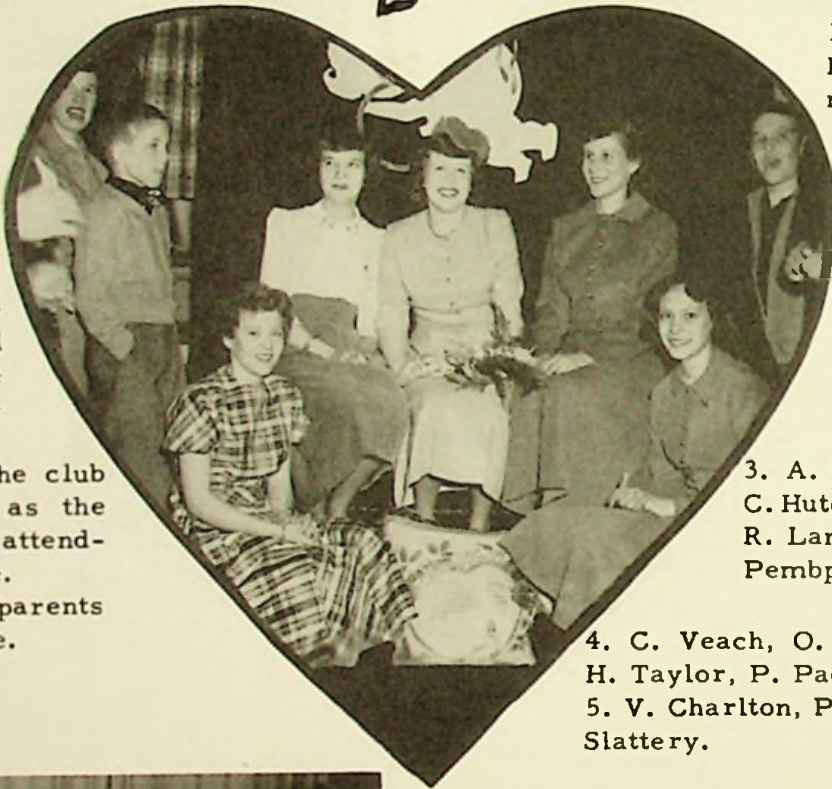
- (1) B. Baldrige, N. Taylor.
- (2) C. Warner.
- (3) C. Hutchinsen, S. Starrett, W. Hoskins, C. Waddell, J. Lowe.
- (4) E. Caulley, G. Wilson, A. Mault, G. Percell.
- (5) J. Pemperton.
- (6) J. Graham, D. Fitch, D. Lavender.
- (7) O. Ward, S. Schneider.
- (8) C. Starrett, C. Waddell, J. Lowe.







L  
A  
T  
I  
N  
C  
L  
U  
B



The Latin Club held their annual dance on Valentine's day. The color scheme used was red and white with large valentines on the side walls.

Members of the club were elected as the "Sweetheart" and attendants for the dance.

Several of the parents attended the dance.

1. J. Kirchner, G. Keller, A. Weidner, J. Sergeant.

2. K. Veach, D. Conrad, O. Sparks, J. Tussy, J. Brady, S. Coriell, L. Dedit, W. Winebrinner, E. Schaffer, H. Stewart, N. Lungsford, N. Ricks.

3. A. Fannin, R. Martin, C. Hutchenson, A. Knigge, R. Lambert, D. Bussy, J. Pemberton, S. Torges.

4. C. Veach, O. Speary, H. Scott, H. Taylor, P. Packard.

5. V. Charlton, P. Packard, M. Slattery.



D  
A  
N  
C  
E





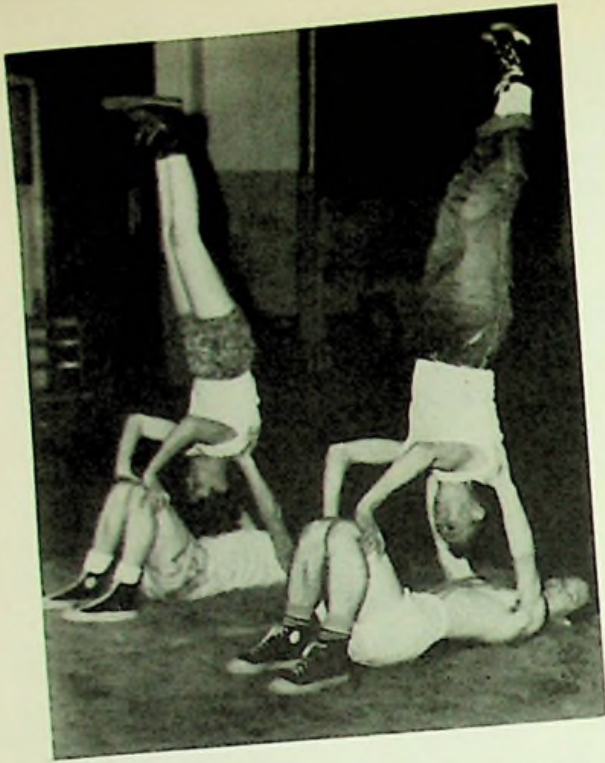
# SNAPSHOTS



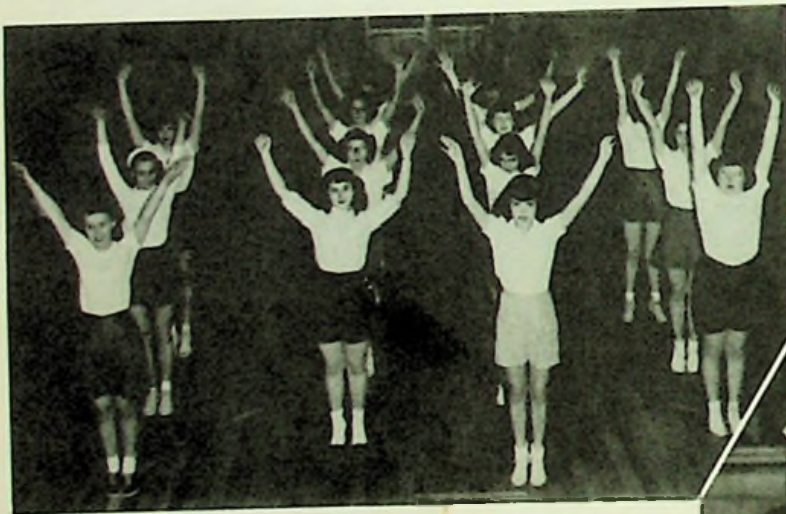
(1) R. Harmon, R. Mays, S. Coriell, J. Brady, C. Garlinger. (2) E. Cambell, D. Emory, J. Williams, H. Davis. (3) P. Taulbee, B. Kinker. (4) S. Snyder. (5) G. Moyer, B. Fenton. (6) E. Schaffer, R. Frazier, L. Stewart, S. Bell, J. Bennett. (7) J. Ervin, N. Mays, B. Kemp, W. Bartee, B. Baldrige. (8) E. Stevens, W. Henson, B. Baer, R. Pierce, B. Montgomery.







PHYSICAL  
E.D.

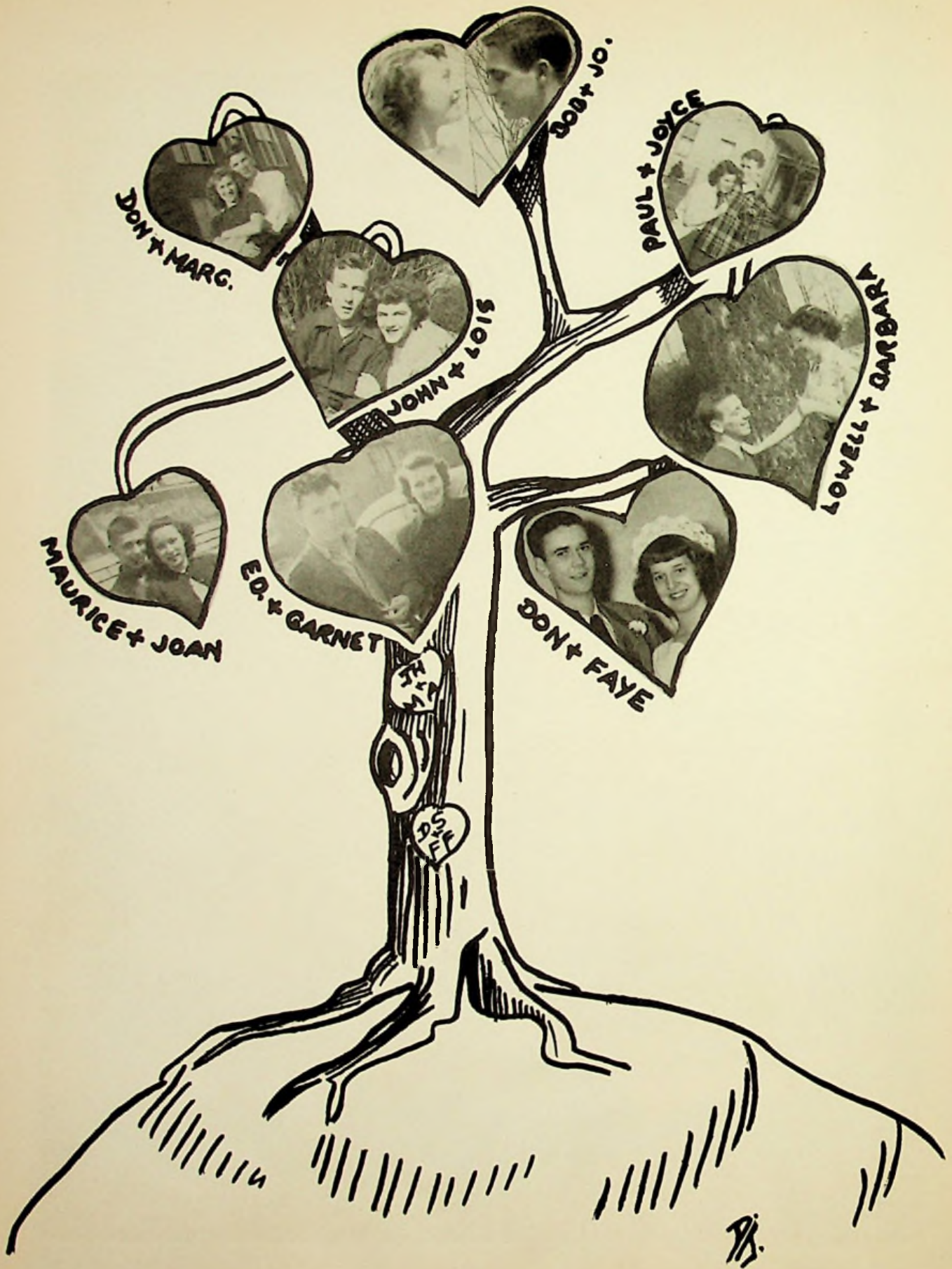




# HERE + THERE







DON + MARG.

BOB + JO.

PAUL + JOYCE

JOHN + LOIS

LOWELL + BARBARA

MAURICE + JOAN

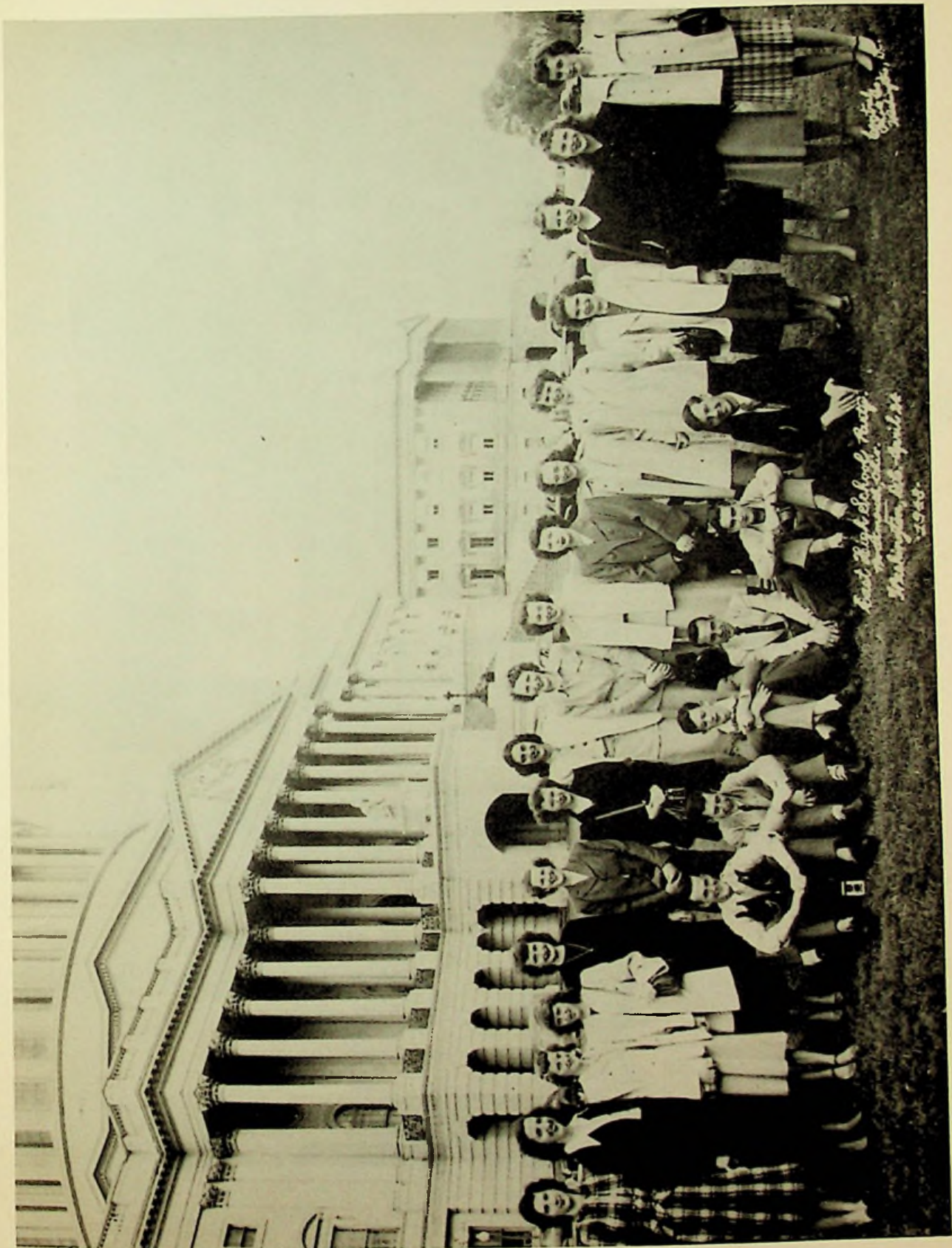
ED. + GARNET

DON + FAYE

D.F.  
S.F.

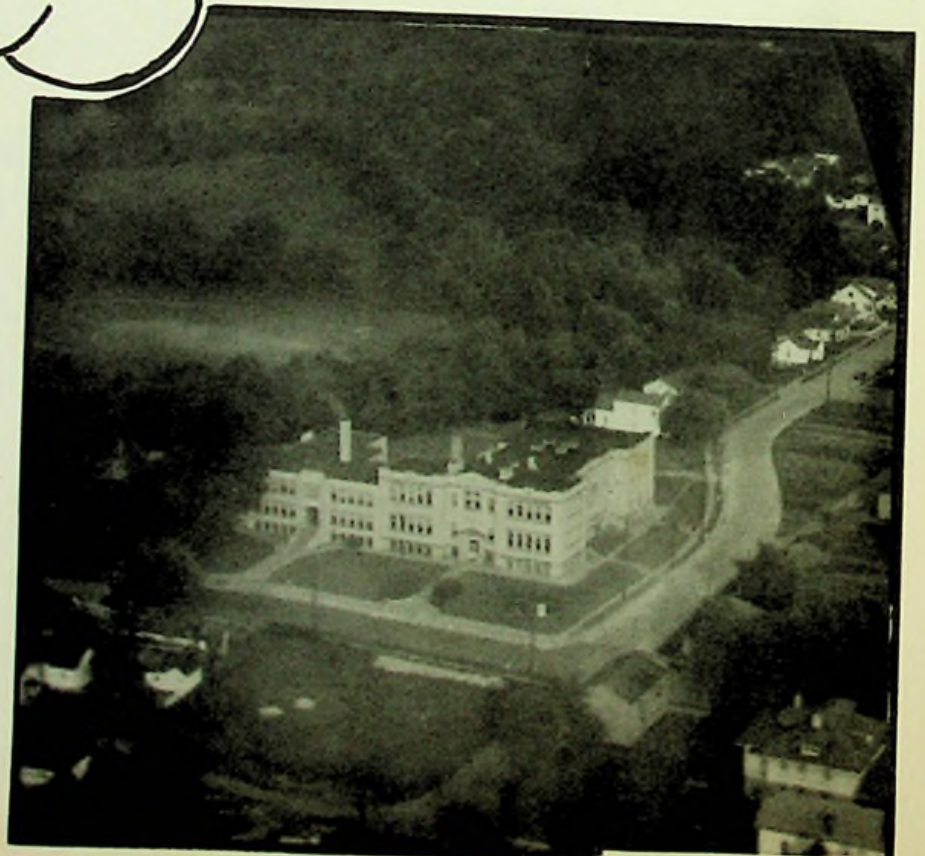
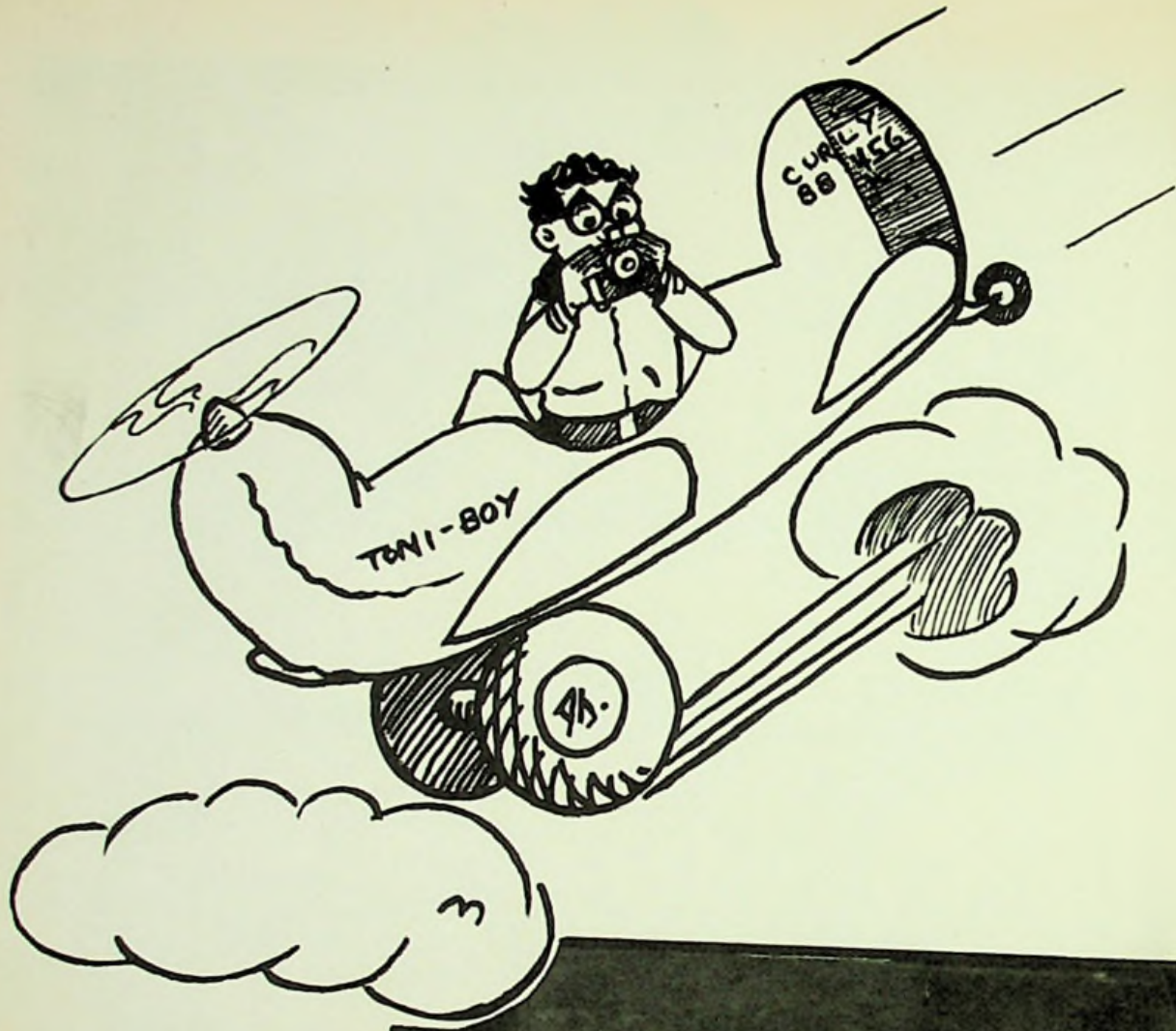
P.S.





East High School Group  
March 15, 1948





GEORGE MOYER





RON JOHNSON





#### EAST vs. RACELAND

The Raceland Ramblers sparked by Ronnie Cox, an all-Kentucky tackle, toppled the Tartans 25-7. East High's lone score came in the third quarter. Hoskins recovered a Rambler fumble on the enemy's 17 and two pass plays and three running plays later Patrick skirted the end from the five for pay-dirt. Steele place kicked for the extra point. The Ramblers scored in the first, second, and twice in the third quarter.



#### EAST vs. WAVERLY

East got into the scoring column when Patrick returned a McCoy punt to the Waverly 3 and Steele scampered over untouched two plays later. The next Tartan score came in the third period when Patrick skirted his left end from the 29. The Tartans last score came in the fourth quarter when Steele rammed through the center from the 6 for the tally. Waverly's only score was made in the final period with Whaley plunging over from the 10.





*Buddy Pruitt*



*Jerry Winebrenner*



*Jim Brady*

**EAST vs. B.I.S.**

The East High footballers edged out a spirited, determined B.I.S. team 19-12. After a 55 yard drive, a Steele to Stanley pass was good for the first marker. East's next tally came in the second quarter with Kent going over from the 5 after a 60 yard down-field drive. Late in the last period, the Tartans ended a hard-fought battle by making the final touchdown, with Kent going over the 5. B.I.S. scored in the third and fourth periods on runs of 95 and 55 yards.



*James Steele*



*"Boopic Man"*



*Lowell Stanley*

**EAST vs. NEW BOSTON**

After leading at the half time 6-0, the Tartans fell in the second half to a very stubborn New Boston team 19-6. The only score in the first half came when Kent took a hand off from James Steele on the Tartan's 17 and raced 83 yards. The Tartans seemed to lose their pep and spirit when Captain Paul Kent was injured and had to remain on the sideline the second half. The New Boston grid men scored in the third and final periods on drives of 65, 44, and 20 yards.





*Carl Bussey*



*Bill Evans*



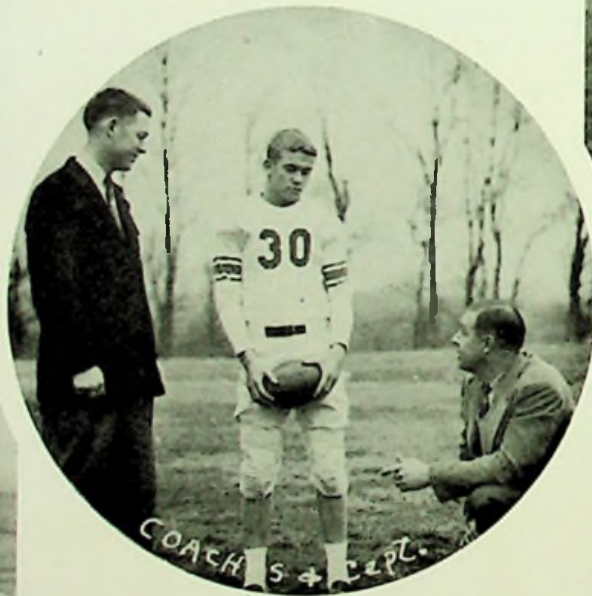
*John Kitcher*

**EAST vs. COLUMBUS**

For their first grid contest of the "48" football season, the Tartans traveled to Columbus to tangle with the Columbus St. Mary eleven. The teams were fairly evenly matched, but the St. Mary's squad had the greater number of lettermen from last year's team. The Tartans looked good at first but slowed down after the first period and lost 18-0.



*Sammy Kitcher*



*COACH S + CAPT.*



*Grant Elliott*

**EAST vs. WURLAND**

East downed a battling Wurtland eleven 13-7. Steele returned Wurtland's kick to the 50 and Patrick and Fraley plowed down field to the 12 yard stripe. Three plays later Kent skirted the end for a score. In the third quarter the Tartans pushed 7 yards and a Steele to Kent pass climaxed the drive with Kent going over from the 12 untouched. Steele kicked the extra point. Wurtland's score came in the final quarter, on a Maggard to Stafford pass.





*Paul  
Kent*



*Bob  
Patrick*



*Bob Orzech*

#### EAST vs. CENTRAL

The East Tartans, tasted a 26-7 defeat at the hands of a small speedy Central Catholic eleven. Schafer scored 3 markers on runs of 44, 24, and 43 yards. Porginski contributed Central's other score on a pass from Widdig. The Tartans scored their only touchdown early in the final period, as Steele to Stanley pass carried the ball to the 27. Patrick then drove to the 4 and Steele plowed over for the tally.

#### EAST vs. WASHINGTON

The Washington Twp. Senators toppled the East High gridgers 6-0 in a very hard fought battle. The only score of the game came in the second quarter when East fumbled a Washington kick and the Senator recovered. Three plays later Hobart Howard plunged over from the 2 for the lone tally. East knocked at the six point door many times during the second half, but seemed to slow up when the chips were down.



*Sonny  
Hoskins*



*"Bums Rush"*

#### EAST vs. PORTSMOUTH RESERVES

The Tartans finished their "48" grid season with the Portsmouth Reserves. The Reserves edged out a larger, but probably slower East team 7-0. The game's only score came in the second quarter with Freckal galloping over from the nine yard stripe for the Portsmouth Reserves.



*Bob  
Dever*



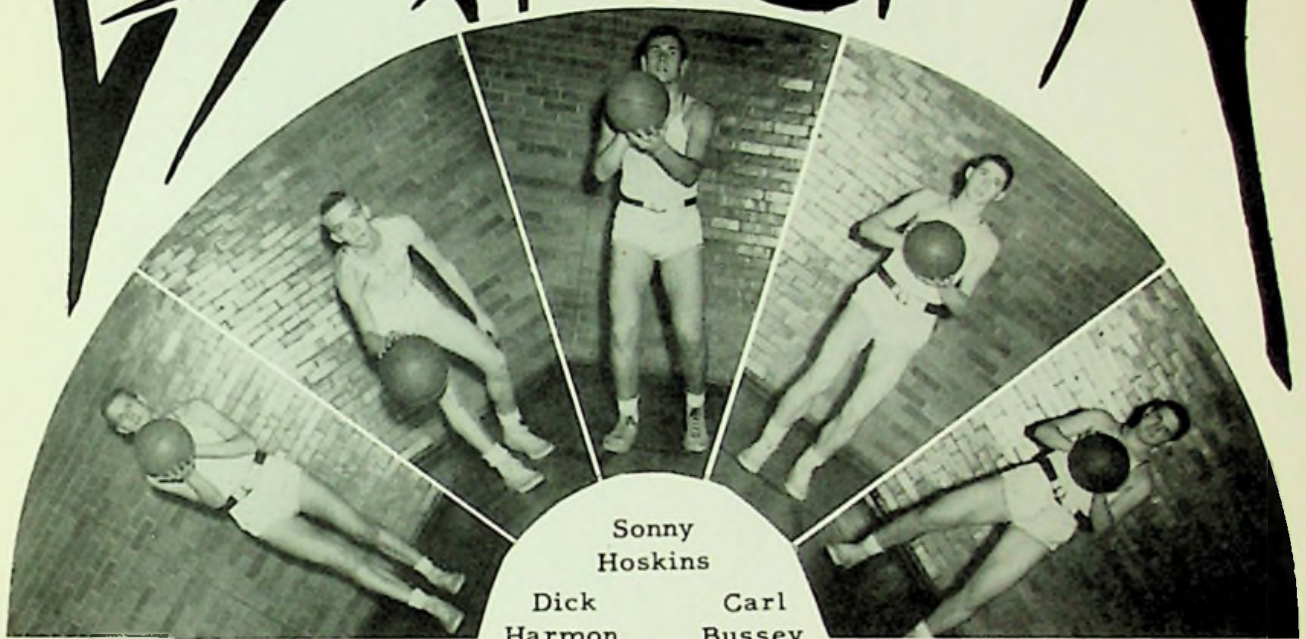


TOP ROW: David Watts, Shurl Shoemaker, Jim Brady, Jack Brumfield. BOT-  
TOM ROW: Jack Wineka, Ray Bolton, Dick Spaulding, Paul Hughes, Dick Hos-  
kins, Charles Garlinger.





# VARSITY



Sonny  
Hoskins  
Dick Harmon      Carl Bussey

Joe Hibbitts

Bill Evans



Charles Kinker



Coach Fuggitt



James Steele



Bob Dever



Lowell Stanley

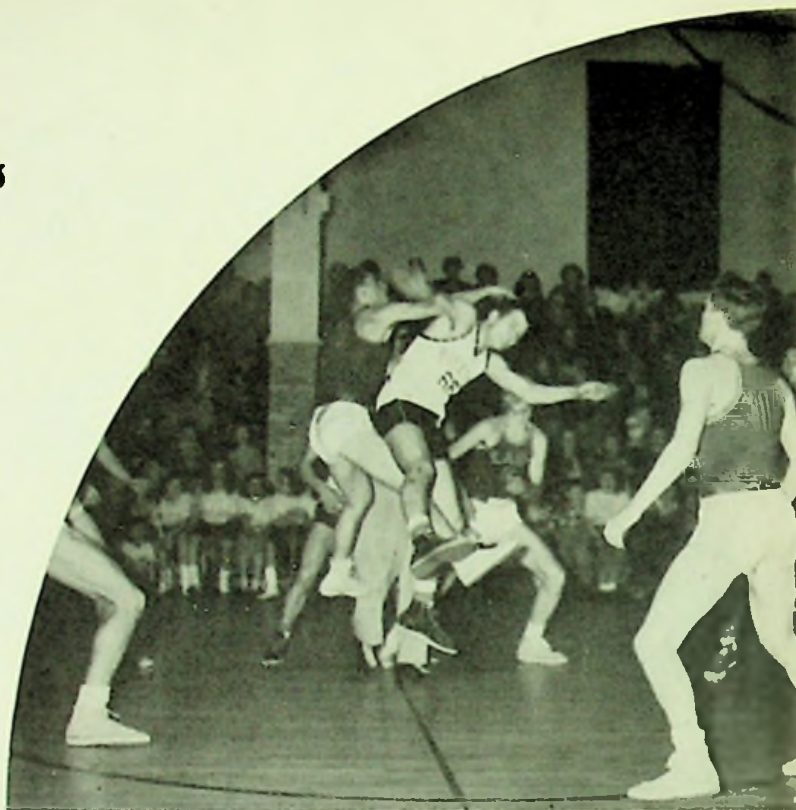


Bob Patrick



# Home Games

East	29	Portsmouth	50
East	50	Stockdale	33
East	30	Waverly	27
East	29	Washington Twp.	44
East	24	New Boston	30
East	27	Wheelersburg	37
East	47	Central Catholic	34
East	51	Ashland Catholic	47
East	49	Frankfort	23

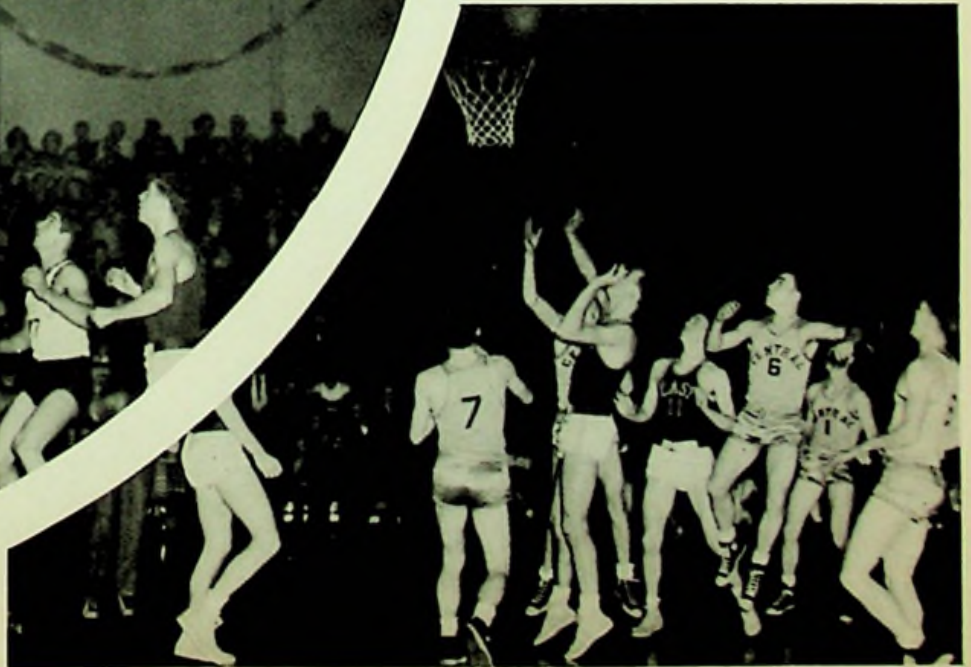






## Away Games

East 29	Ashland Catholic	45
East 38	Minford	48
East 33	South Webster	49
East 25	Washington C.H.	27
East 28	Wheelersburg	48
East 48	Central Catholic	24
East 27	Waverly	23
East 31	Stockdale	41
East 29	Frankfort	46
East 38	Pomeroy	28
East 35	New Boston	58
	Tournament	
East 36	Portsmouth	51





# RESERVEVES



Charles Veach



Richard Hoskins



Blaine Gilliland



Carl Etterling



Wells Basham



Paul Fraley



Buddy Duduit



Ray Bolton



Charles Garlinger



Bob Welsh



Leonard Oiler

East 28	Minford	23
East 20	South Webster	42
East 21	Wheelersburg	23
East 32	Central Catholic	11
East 24	Waverly	19
East 29	Stockdale	18
East 41	Frankfort	47
East 24	New Boston	14



Jerry Winebrenner

East 15	Portsmouth	26
East 46	Stockdale	27
East 42	Waverly	32
East 19	Washington Twp.	25
East 25	New Boston	15
East 19	Wheelersburg	22
East 40	Central Catholic	16
East 37	Ashland Catholic	12
East 32	Frankfort	30





TOP ROW: Charles Kinker, Carl Bussey, Sonny Hoskins, Lowell Stanley, Bob Dever, James Steele. BOTTOM ROW: Bill Evans, Bob Patrick, Dick Harmon, Joe Hibbitts.



Trophy Case





Prior to coming to East, Mr. Schomburg taught at Lindsay School and also served 2 years in the Army. When he came to East High in 1946, he began teaching History. Mr. Schomburg received his A.B. degree from Holbrook College. He majored in Physical Education and History. He is assistant football and basketball coach.



Mr. Fuggitt attended Ohio State University where he received his B.S. degree in education. He majored in Physical Education. Before coming to East in 1937, he taught at Grant School in Portsmouth. Mr. Fuggitt is head football and basketball coach and also teaches Manual Arts.



Mr. Pogue entered Hanover College in 1940 and studied there until 1942. He served 4 years in the Army, and received his B.S. degree in 1948. He majored in Physical Education and Social Studies. He is assistant football and basketball coach and head baseball coach.



Jack Brumfield





# S.V.C. TRACK MEET









JOHN JOHNSON



# MILLHUFF'S



Sincere Best Wishes And Success To A  
Fine Graduating Class

MODERN SELF-SERVICE GROCERY

FROZEN FOODS - MEATS

SHOES AND DRY GOODS



JOHNSON BROS. GROCERY

Corner of Harding and Mayo



"A Good Store For A Good Community"

THE CRAIGMILES  
FURNITURE CO.

"See The Styles At Craigmiles"

Phone 319

936 Gallia St.

Whitman Choclates  
BOURGHOLTZER'S  
DRUG STORE

Radios Philco Refrigerators

Courtesy  
of  
WINEBRENNER SERVICE STATION

Gas Oil  
Lubrication

KOBACKER'S





# HAMBURGER SHOP

J. Everett Reese, Propr.

Buy  
Em'  
By  
The  
Sack



Buy  
Em'  
By  
The  
Sack

Get the food that makes you glad you're hungry;



Prepared before your very eyes on all stainless steel.

Best Wishes to the  
Class of '49

CLIFF JONES

THE PORTSMOUTH  
PAINT CO.

Gallia at Findlay Street

PAINT — GLASS — WALLPAPER

MARTING'S

HIGH SCHOOL SHOPS

Are Always

"On the Ball"

Marting's

Portsmouth, Ohio



SCHULERS JEWELRY

"Gifts that Last"

Watches - Jewelry - Appliances

Watch Repairing

Stanley Theatre Bldg.

Compliments

Of

BRYAN'S

Cleaning and Pressing

"22 Years in Sciotoville"

Congratulations Seniors

From

ATLAS FASHIONS

The Style Center of This

Area Since 1895

Portsmouth, Ohio

## HERFF — JONES COMPANY

Designers and Manufacturers of

SCHOOL AND COLLEGE JEWELRY, GRADUATION ANNOUNCEMENTS,

CUPS AND TROPHIES

INDIANAPOLIS, INDIANA

Representative: P. J. and R. J. Burkhart



Jessie A. Gill

Thos. J. Gill



GILL FUNERAL HOME

Ambulance Service

Phone 100

Sciotoville, Ohio

Compliments

of

EVANS GROCERY

Meats

Groceries

CRIGHTON

OFFICE SUPPLY CO.

740 Fifth Street

"Everything for the Office"

Courtesy

of

EVANS FLORAL SHOP



KRAUSS

Furniture

Appliances

Phonograph Records

831-833  
Gallia St.

830-832  
Sixth St.

Get a Kodak

At

FOWLER'S

824 Gallia Street  
Portsmouth, Ohio

Compliments

of

SHELBY SHOES

1007 Gallia Street

Portsmouth, Ohio

Best Wishes To The  
Graduating Class of '49

JACK DEMPSEY

GROCERY

Fresh Fruits - Vegetables

Meats of All Kinds

Corner Harding and Third

Phone 88

Compliments of

THE ORIGINAL POP'S

PLACE

Route 52, Wheelersburg

THE H. LEET

LUMBER CO.

404 Harding Ave.

Building Supplies



SHERMAN HIBBITTS AND SONS

Department Store

212 Harding Ave. Phone 36-G



Jayson Shirts  
Poll Parrott Shoes

Denridge Slacks  
Beau Brummel Ties

Star Brand Shoes  
Brian McNeal Knitwear

THE PASTRY SHOP

708 Chillicothe Street

Phone - 1837

ANNE'S PASTRY SHOP

828 Gallia Street

Phone - 628

We Specialize in Birthday and Wedding Cakes

Compliments

of

CHABOUDY'S GROCERY

Sciotoville, Ohio

Admiral - Emerson Radios

EVANS RADIO SALES AND SERVICE

John L. Evans - Manager

215 Harding Ave. Phone Sc. 91-R



Congratulations and Best Wishes



PORTSMOUTH  
STEEL CORPORATION



SCHOMBURG'S  
Complete Food Market

Phone Scioto - 39  
229 Harding Ave.  
Sciotoville, Ohio

COMPLIMENTS  
OF

ORTHMEYER  
BAKERY

Best Wishes Seniors  
CLARY'S SANDWICH SHOP  
Harding Avenue

GALLIA and HARDING  
PHONE 47

## SCIOTO DRUG

W. Elton Smith, Pharmacist

"Where you bring your prescriptions"

224 Harding Ave.

Telephone Scioto 220-L

837 Sixth St.

Phone 1008

COMPLIMENTS  
OF

## HERMS

837 SIXTH ST.      PHONE 100

HIBBITTS  
HARDWARE COMPANY

315 Harding Avenue  
Sciotoville, Ohio      Phone 186



ROBERTS JEWELERS

421 Chillicothe Street

Portsmouth, Ohio

Compliments

of

THE SNACK SHOP

Good Luck Seniors!

RICHMAN BROTHERS

CLOTHES

311 Chillicothe Street

"Best Wishes to

The Class of '49"

CLIFF JONES

COVERT'S FURNITURE CO.



Reasonably Priced Furniture and Appliances

Boston 34

New Boston, Ohio



Compliments

from

JOHNSON'S GREEN HOUSE

"Flowers for Every Occasion"

Compliments

from

PAT'S SHOE REPAIR

*Coca-Cola*

TRADE-MARK REG. U. S. PAT. OFF.

SELECT DAIRY

"The Best in Dairy Products"

2345 Gallia St. Phone 2822

"Everything For The Sportsman"

at

SCOTT'S  
SPORTING GOODS

822-6th Street Portsmouth, Ohio  
Phone 830

WOLFF

"Clothes For Dad 'n Lad"



Compliments of  
PORTSMOUTH'S  
AUTO EXCHANGE

Jack Fish Owner

Phone 3036

2332 Gallia Street

Good Luck Seniors  
If You Want To Chin

Come To  
TARTAN INN

KINKERS  
BEAUTY SHOP  
324 Marshall Avenue

Emma Kinker  
Lucille Burkheimer

Compliments  
of  
ADRIAN'S GRILL

STANLEY THEATER

Jim Richardson, Mgr.



Best Wishes and Success To The Class of '49.



CHEZ PAREE DINNER CLUB

Chicken

Steak

Sea Food

We cater to private parties  
and banquets.

Ralph-Evelyn Mante

Wheelersburg, Ohio

Phone S. 1027-M

Compliments

of

NEWBERRY BROTHERS

Variety Store

New Boston, Ohio

Compliments of

DUVENDECKS

Wallpaper          Paint

Linoleum

5619 Gallia      Phone 276



KNORE AIRPORT

Minford, Ohio



Flight Training

Charter-Passenger Rides

Piper Aircraft Sales and Service





Compliments  
of  
W. G. HARR

Congratulations

Class of '49

Portraits of Distinction

ARROW STUDIO

Phone 3733

605 Chilicothe Street

Compliments Of  
TURNER'S  
SHOE REPAIR

Clifford M. Foster

Photographer

6440 Gallia Street

Phone 170-Y Sciotoville, Ohio

Heat Your Home The "Modern" Way

Gas - Oil - Coal

MODERN HEATING COMPANY

1211 Third Street

Phone 1927

BLACKBURN'S GARAGE

Used Cars Auto Parts

Specializing In Motor Tune-Ups

Phone Scioto-166-J

6445 Gallia St. Sciotoville, Ohio

LOLA'S  
BEAUTY SHOP

Operators

Velva Schuler  
Lola Woods













UNIVERSITY OF TORONTO LIBRARY