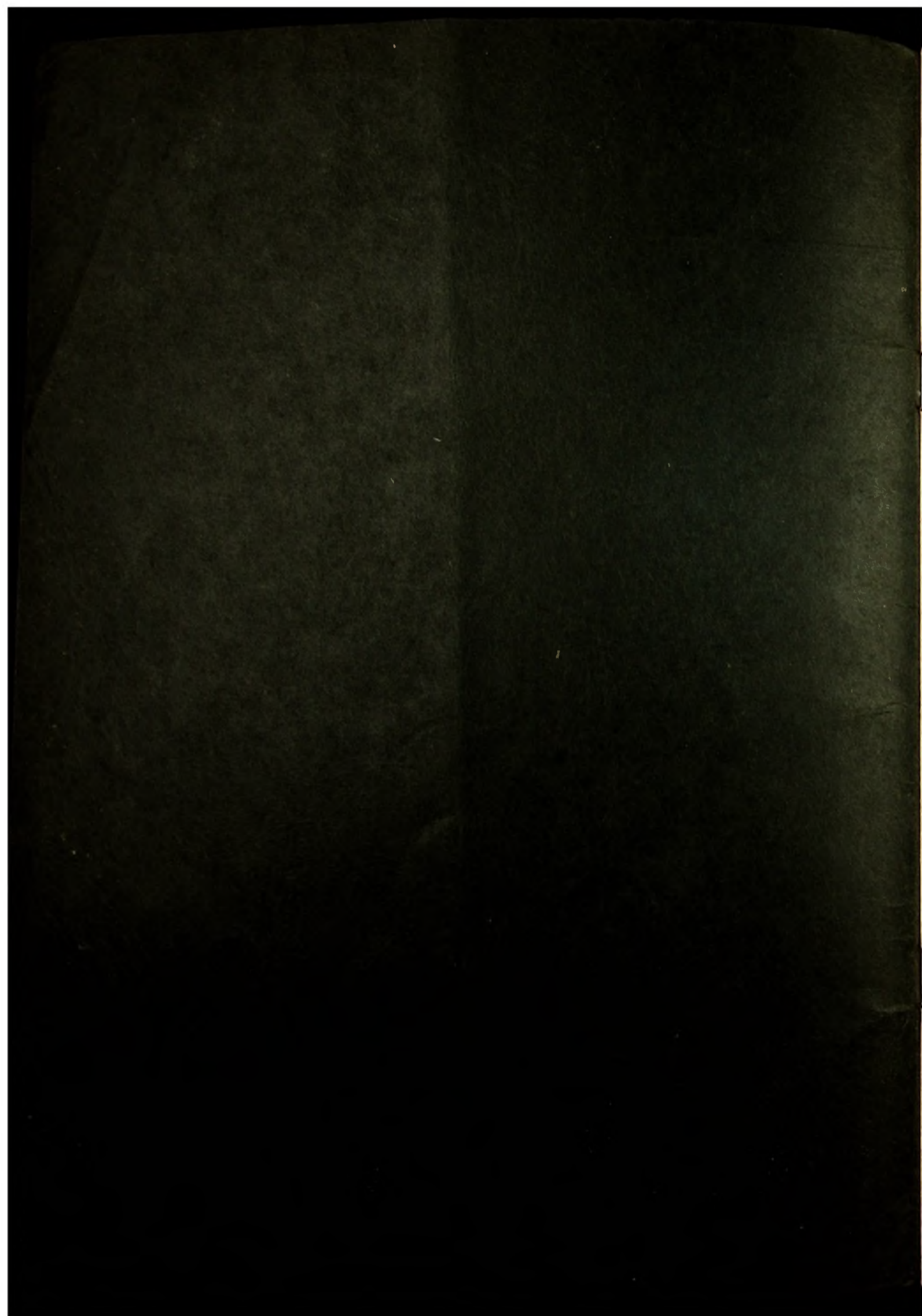


*The*

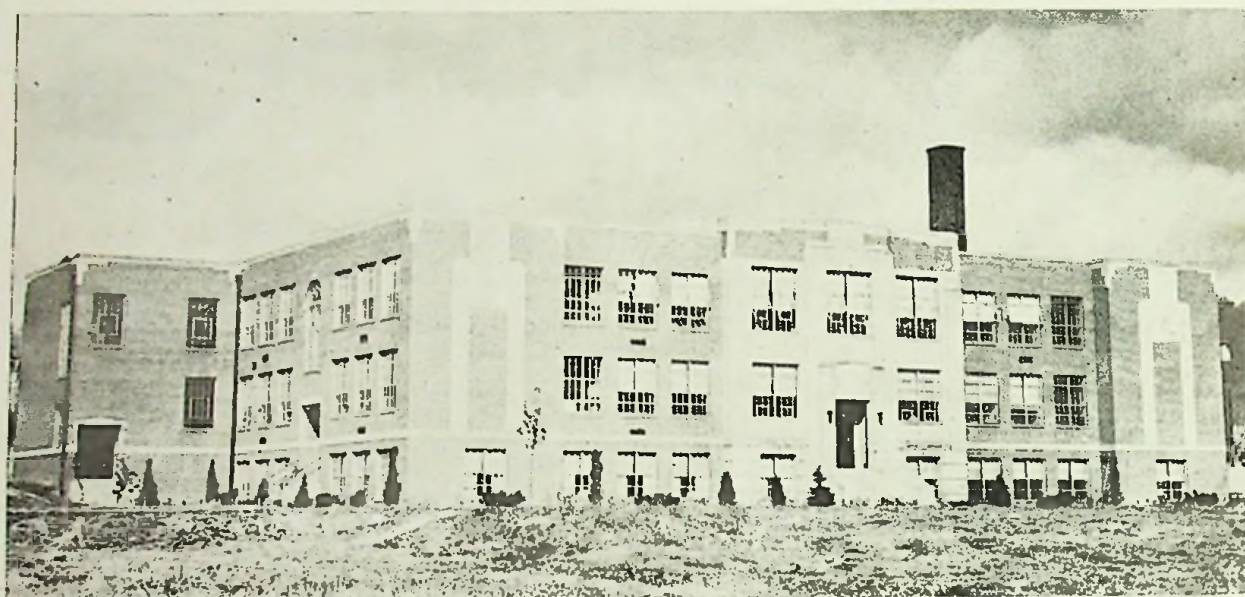
**SENATORIAN**

1944



**1944**



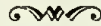


## *School Life*

*For the Fifth Year in Ohio's Largest Rural District*

*Washington Rural High School*

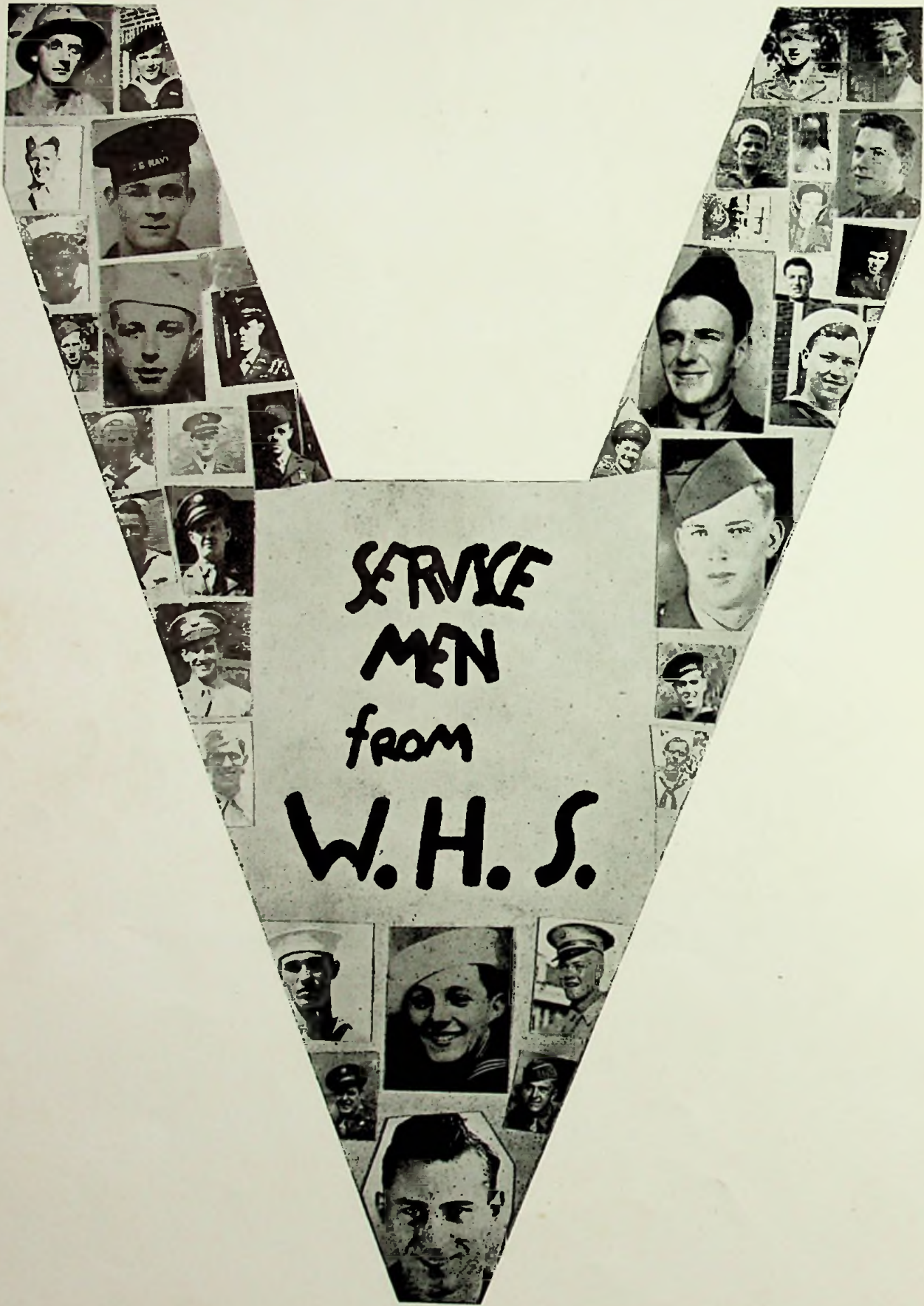
## DEDICATION



**T**O THOSE MEN, for their supreme sacrifice and their undying attempt to give us—the generation of tomorrow—the chance to live as all free men wish to live, we express our gratitude and ever increasing appreciation.

We, the staff of the 1944 Senatorian, hereby dedicate this annual to all the men and women of Washington Rural High School, who are rendering their services for our country.

THE STAFF.



**SERVICE  
MEN  
FROM  
W.H.S.**



# ADMINISTRATION



E. R. McCOWEN  
County Superintendent of Schools



N. B. POTTS  
County Superintendent of Schools

Lieutenant (j.g.) McCowen was Superintendent of Scioto County Schools until March 1st, when he entered the U. S. Navy. Mr. Potts is now filling this vacancy.

## Board of Education --- Washington Township



Left to Right: Charles Prince, Lowell Strickland, Roy Cunningham, Bessie Greene (Clerk), George Jenkins (President).







MR. ROLF

We, the staff of the 1944 Senatorian, wish to express our appreciation to Mr. Rolf, for his unfailing confidence in youth, his constant encouragement, and his kindly counsel, as principal of Washington High School.

THE STAFF.




*Faculty*




**ALLENE AMBERG**  
 English  
**RUTH H. DAULTON**  
 Home Economics

**MARY M. BENNETT**  
 Commercial  
**MARCELLA S. DONLEY**  
 Latin

**JOHN H. BOUTS**  
 Physics  
**RICHARD FENTON**  
 Physical Education

**DALE W. GILLETTE**  
 Vocal & Instrumental Music

**RUTH W. JOHNSON**  
 American History, Civics

Faculty



JOHANNA M. KEAN  
Home Ec., Chemistry  
TODD MITCHELL  
Commercial

KATHRYN KEGLEY  
General Science, Biology  
RUTH P. MIGNEREY  
Mathematics  
JOHN F. STAMM  
Industrial Arts

AMY E. MITCHELL  
English  
ELIZABETH I. RESSINGER  
Social Sciences

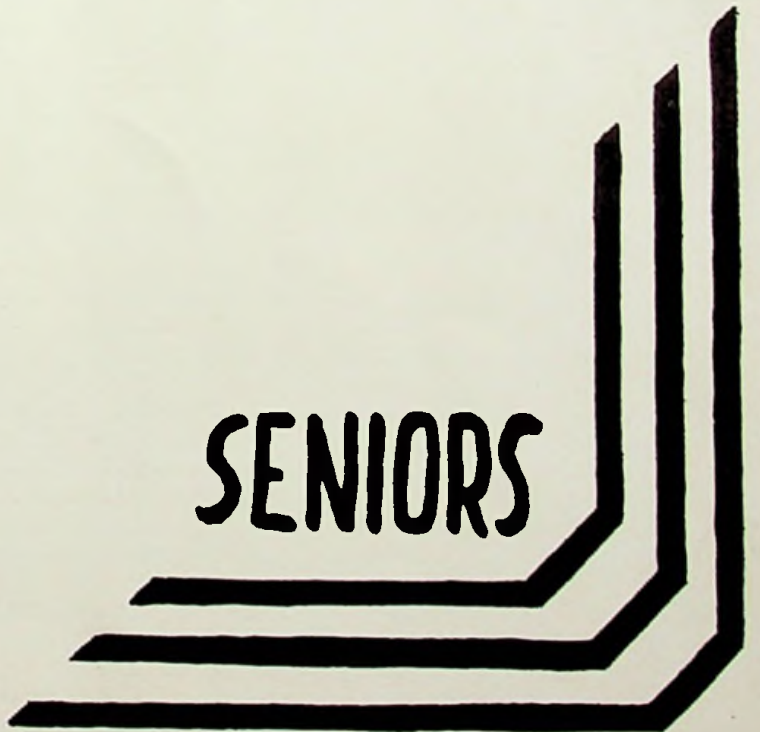


MR. GEORGE F. JENKINS

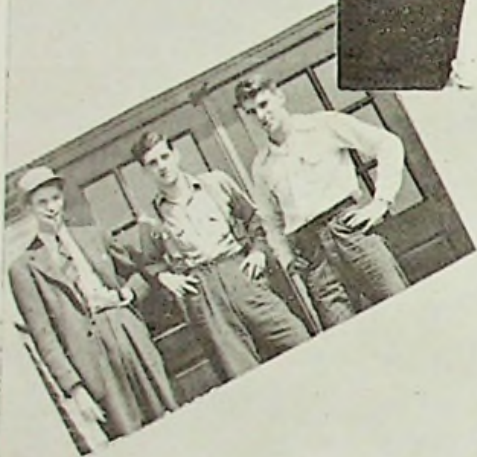
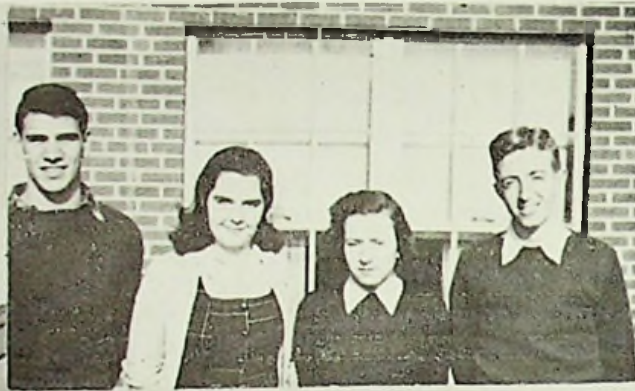
We are proud of the forty-four years of service that Mr. George F. Jenkins has given, as a board member, to the people of Washington School District. After serving forty-three years, he was re-elected, without opposition, for another term of four years. We believe this long period of service establishes a record for school board members in the State of Ohio. Mr. Jenkins has spent his lifetime in Scioto County and has lived in Nauvoo and vicinity fifty-two years. We thank you, Mr. Jenkins, for this interest in our schools.



**SENIORS**



# Class of '44



Reiser—Frye—O'Dell

### OFFICERS

President ..... Raymond O'Dell  
 Vice-president ..... Leah Jane Prince  
 Secretary ..... Rutha Mae Diller  
 Treasurer ..... Don Cooley

### ADVISORS

Miss Bennett — Mrs. Daulton

**BRIGADIER GENERAL.** . . . . . Among the ranks of the beginning group of 1940 are athletes, bandsmen, scholars, soldiers, sailors and marines. They march on with the group of class officers and advisors—Mr. Tulipan and Mr. Stamm—which they have selected to represent their class. Their ambitions and accomplishments bring their first promotion with good standing.

**MAJOR GENERAL.** . . . . . They are now ready to continue their higher ranks. Mr. Fenton and Miss Marcella Riehl were chosen as advisors. During this year two parties were given, and two booths were sponsored in the Fall Festival. Having acquired and met successfully greater responsibilities, they have an idea of what a difficult campaign they are undertaking.

**LIEUTENANT GENERAL.** . . . . . Two long years have been completed and with this advancement comes the responsibility of raising sufficient funds for that big event, "The Prom." Mrs. Donley was chosen as advisor with Miss Marcella Riehl assisting. It was from this class that the principles were formulated and members chosen for the National Honor Society. They have progressed rapidly in the field of military science. Some of the group were represented in the plays, "Silas Smidge From Turnip Ridge" and "High Pressure Homer."

**GENERAL.** . . . . . This high rank requires that they assume the leadership in the social life of the school. Their social program has consisted of a Hallowe-en Party, New Year's Eve Party, plays, clubs, Junior-Senior Prom, and finally, to climax their long years of training, Baccalaureate and Commencement. Miss Bennett and Mrs. Daulton were chosen as the advisors of this last year. Thus they have arrived where they feel equipped to tackle the battles of this fast-moving world. Their future problems will be more easily solved because of the excellent training received at W. H. S.

**RUBY BOLTON:**  
 Commercial: Band 1, 2, 3, 4; Al  
 County Band 2; "High Pres-  
 sure Homer" 3; Chemis.,  
 Club 4; Annual Staff 4.



**HENRY COBURN:**  
 Commercial: Intramural Bas-  
 ketball 3; Glee Club 3.

**CHARLOTTE BRIDWELL:**  
 College Preparatory: Glee Club  
 1, 2, 3; Mixed Chorus 4; An-  
 nual Staff 4.



**HAROLD COOPER:**  
 Elective: Basketball 3, 4; En-  
 tered Navy March 13th.

**WILMA CLIFTON:**  
 Commercial: English Club 1;  
 Latin Club 1, 2; Scholarship 2;  
 Chemistry Club 4; Annual  
 Staff 4.



**DONALD COOLEY:**  
 Commercial: Cheerleader 1;  
 English Club 1, 2; Latin Club  
 1, 2; Glee Club 1, 2; Scholarship  
 2; Class Vice President 3;  
 "Silas Smidge From Turnip  
 Ridge" 3; Newsette Staff 3;  
 "Hillbilly Courtship" 4.

**NINA CRAWFORD:**  
 Commercial with Latin: Lat-  
 in Club 1, 2.



**RUTH COX:**  
 Commercial and Home Ec.:  
 Portsmouth High 1; Home Ec.  
 Club 2; "Silas Smidge From  
 Turnip Ridge" 3; Newsette  
 Staff 3, 4; Glee Club 4.

**JANET DAVIS:**  
 Commercial and Home Ec.:  
 English Club 1, 4; Home Ec.  
 Club 1, 2; Queen's Attendant  
 2; Newsette Staff 3, 4; Glee  
 Club 4; Annual Staff 4.



**MARGARET ESTEP:**  
 Commercial and Home Ec.

**RUTHA MAE DILLER:**  
 Commercial: Latin Club 1, 2;  
 English Club 1, 2, 4; Scholar-  
 ship 1, 2, 3; Newsette Staff 3;  
 Annual Staff 4; Class Secre-  
 tary 4; Chemistry Club 4.



**LEE EVANS:**  
 Industrial Arts.

**THELMA DILLOW:**  
 College Preparatory: Home Ec.  
 Club 1, 2; English Club 1, 2;  
 Band 1, 2, 3, 4; Glee Club 1, 2,  
 3, 4; Newsette Staff 3; "Silas  
 Smidge From Turnip Ridge" 3.



**JAMES FOLSOM:**  
 College Preparatory: Model  
 Airplane Club 1; Latin Club  
 1, 4; Band 1, 2, 3, 4; Chemistry  
 Club 4; Annual Staff 4.

**MARVIN DISTEL:**  
 Industrial Arts: English Club  
 1, 2; National Honor Society 3,  
 4; "Hillbilly Courtship" 4; Sen-  
 ior Survey 4.



**TAULBEE FRYE:**  
 Elective: Airplane Club 1;  
 Band 1, 2, 3, 4; All County  
 Band 2; Glee Club 3; "High  
 Pressure Homer" 3; Annual  
 Staff 4; Mixed Chorus 4.



**GEORGE GABBERT:**  
 Elective: Cheerleader 2, 3;  
 Newsette Staff 2, 3; Glee  
 Club 3; Scholarship 2; Annual  
 Staff 4.



**ALMA HALL:**  
 College Preparatory: Latin  
 Club 1, 2; English Club 1, 2;  
 Annual Staff 4.



**ALICE GREENE:**  
 College Preparatory: Latin  
 Club 1; Band 1, 2, 3, 4; Glee  
 Club 2, 3, 4; Annual Staff 2;  
 Spanish Club 4; English Club 4.



**LUCY HALL:**  
 College Preparatory: English  
 Club 1, 2, 4; Latin Club 1, 2,  
 4; Scholarship 1, 2, 3, 4; Glee  
 Club 2; "High-Pressure Homer"  
 3; "Silas Smidge From  
 Turnip Ridge" 3; Newsette  
 Staff 3; Honor Society 3, 4;  
 Chemical Club 4; Annual Staff  
 4; Librarian 4; "Hillbilly  
 Courtship" 4; Senior Survey.



**ELEANOR GREENE:**  
 Commercial with Latin: Glee  
 Club 1, 2, 3; "High-Pressure  
 Homer" 3; Newsette Staff 3;  
 Mixed Chorus 4; Annual Staff  
 4.



**WILMA HAMM:**  
 Commercial: Cherry Blossom  
 Queen 1; G. A. C. 1; English  
 Club 1, 2; Annual Staff 4.



**CHARLEEN GRUMME:**  
 Commercial with Latin: Glee  
 Club 1; Latin Club 1, 2; Eng-  
 lish Club 1, 2; Annual Staff 4.



**DELORES HILT:**  
 Commercial and Home Ec.:  
 Band 1, 2, 3, 4.



**MAXINE JAMES:**  
 Commercial with Latin: English Club 1, 2; Latin Club 1, 2; "High-Pressure Homer" 3; Newsette Staff 4; Glee Club 4; Librarian 4.



**JEAN LOOKABAUGH:**  
 College Preparatory: English Club 1, 2, 4; Latin Club 1, 2, 4; Glee Club 1; Newsette Staff 3; Scholarship 3; Honor Society 3, 4; Senior Survey 4; Mixed Chorus 4; Annual Staff 4; Chemistry Club, 4; Librarian 4.

**MAXWELL JAMES:**  
 Commercial with Latin: English Club 1; Intramural Basketball 1, 2; "Silas Smidge From Turnip Ridge" 3; Glee Club 3; Basketball 3, 4; Annual Staff 4; Newsette Staff 4; Baseball 3, 4.



**ISABEL MCGINN:**  
 College Preparatory: Glee Club 1, 2; Latin Club 1, 2; Band 1, 2, 3, 4; Annual Staff 4.

**EVELYN LEWIS:**  
 Commercial: Home Ec. Club 1, 2; Scholarship 2, 3; Annual Staff 4.



**GENEVA MALONE:**  
 Commercial: English Club 1; Scholarship 1; Home Ec. 1, 2.

**MARY MARGARET LISTON:**  
 Elective: Glee Club 1; All County Band 1, 2; Latin Club 1, 2; English Club 1, 2; Band 1, 2, 3, 4; "Silas Smidge From Turnip Ridge" 3; Newsette Staff 3; Annual Staff 4; Chemistry Club 4.



**HENRY MANN:**  
 Commercial: Glee Club 3.

**LOUISE MARCUM:**  
 Commercial: Debate Team 1;  
 Glee Club 1; English Club 1  
 2; Latin Club 1, 2; "Silas  
 Smidge From Turnip Ridge"  
 3; Newsette Staff 3; Spanish  
 Club 4; Annual Staff 4.



**VIRGINIA MULLINS:**  
 Commercial with Latin: Eng-  
 lish Club 1; Latin Club 1, 2;  
 Scholarship 1; Annual Staff 4;  
 Newsette Staff 4; Librarian 4;  
 Spanish Club 4.

**SYLVIA MAULT:**  
 Home Economics: Home Ec.  
 Club 2.



**HELEN MUSTARD:**  
 Commercial: Vanceburg High  
 1, 2, 3; Glee Club 4.

**CATHERINE SOWKULECH  
 MITCHELL:**  
 College Preparatory: English  
 Club 1; Latin Club 2.



**EILEEN NOEL:**  
 Commercial with Latin: Lat-  
 in Club 1, 2; English Club 1,  
 2; "High-Pressure Homer" 3.

**JACK MOWERY:**  
 Industrial Arts: Baseball 2, 3;  
 Intramural Basketball 2, 3  
 "Silas Smidge From Turnip  
 Ridge" 3.  
 Entered Marines Sept. 13th.



**RAYMOND O'DELL:**  
 College Preparatory: Latin  
 Club 1, 2; English Club 1, 2,  
 4; Scholarship 1, 3; Basket-  
 ball 1, 2, 3, 4; "Pigtails" 2;  
 Baseball 3, 4; "Silas Smidge  
 From Turnip Ridge" 3; "High-  
 Pressure Homer" 3; Glee Club  
 3; Honor Society 3, 4; "Hill-  
 billy Courtship" 4; Chemistry  
 Club 4; Class President 4;  
 Editor Senatorian 4.

**CURTIS PHIPPS:**  
 College Preparatory: East  
 High 1; English Club 1, 2, 4;  
 Scholarship 1, 2, 3; Latin Club  
 2, 3; Honor Society 3, 4; Intra-  
 mural Basketball 3, 4; Senior  
 Survey 4.



**CARL SANFORD:**  
 Commercial: Model Airplane  
 Club 1; Glee Club 3, 4.

**LEAH JANE PRINCE:**  
 College Preparatory: Debate  
 Team 1; Glee Club 1, 2, 4; Eng-  
 lish Club 1, 2, 4; Latin Club  
 1, 2, 4; All County Band 1, 2;  
 Band 1, 2, 3, 4; Class Vice  
 President 1, 2, 4; Scholarship  
 1, 3; Newsette Staff 2, 3;  
 "Silas Smidge From Turnip  
 Ridge" 3; Honor Society 3, 4;  
 Senior Survey 4; Chemistry  
 Club 4; Annual Staff 4; "Hill-  
 billy Courtship" 4.



**LOUIS SCHOETTLE:**  
 College Preparatory: Latin  
 Club 1; Basketball 1, 2.  
 Army Cadet.

**ORVILLE REISER:**  
 Industrial Arts and Elective:  
 Model Airplane Club 1; Class  
 President 1, 2; English Club  
 1, 2; Scholarship 1, 2; Newsette  
 Staff 2, 3; "Pigtails" 2; Hon-  
 or Society 3, 4; Glee Club 3;  
 "Silas Smidge From Turnip  
 Ridge" 3; Co-Editor Senator-  
 ian 4.



**PAUL SCHWAMBERGER:**  
 Industrial Arts: Basketball 1,  
 2, 3, 4; Baseball 2, 3, 4.

**FRANCES RIEHL:**  
 Commercial and Home Ec.:  
 Band 1, 2, 3, 4.



**LETA SHAW:**  
 Commercial and Home Ec.:  
 English Club 1; Home Ec.  
 Club 2; Glee Club 1, 2.

**JOHN H. SHEETS:**  
 College Preparatory: Class  
 Treasurer 1; English Club 1,  
 2, 4; Latin Club 2, 4; Intramu-  
 ral Basketball 2, 3; Model Air-  
 plane Club 2; Band 2, 3, 4;  
 Glee Club 3; "High-Pressure  
 Homer" 3; Honor Society 3,  
 4; Chemistry Club 4; Annual  
 Staff 4; "Hillbilly Courtship"  
 4; Entered Ohio State March  
 13th.



**PATRICIA WAKEFIELD:**  
 College Preparatory: Class  
 Secretary 1; G.A.C. 1, 2; Band  
 1, 2; Latin Club 1, 2.



**GENEVA ALICE SLOAN:**  
 Commercial with Latin: Glee  
 Club 1, 2, 3, 4; Annual Staff 4.



**LOIS MAE WEGHORST:**  
 Commercial: Glee Club 1; Latin  
 Club 1, 2; English Club 1, 2, 4;  
 Band 1, 2, 3, 4; Newsette  
 Staff 3; Scholarship 3; Annual  
 Staff 4.



**ROY SMITH:**  
 Industrial Arts: Tumbling  
 Team 1, 2; Intramural Basket-  
 ball 2, 4.



**ELLSWORTH WHITE:**  
 College Preparatory: Glee  
 Club 1; Model Airplane Club  
 1; Band 1; Newsette Staff 2,  
 4; "High-Pressure Homer" 3.



**BETTY STONE:**  
 Commercial: Home Ec. Club 1  
 2; English Club 1, 2, 4; Schol-  
 arship 3; Annual Staff 4.



**LIMA WILLIAMS:**  
 Commercial: Debate Club 1;  
 Home Ec. Club 1; English  
 Club 1, 2, 4; Newsette Staff 3;  
 Class Secretary 3; Annual  
 Staff 4.



**WILLARD WILLIAMS:**  
 College Preparatory: Scholarship 1, 2, 3, 4; English Club 2, 4; Latin Club 2, 4; Newsette Editor 3; Class Treasurer 3; Honor Society 3, 4; Chemistry Club 4; Senior Survey; "Hill-billy Courtship" 4. — Ranked First in the District in Senior Survey.



**WILBA WINDSOR:**  
 Commercial with Home Ec.; English Club 2; Newsette Staff 4.

**CARL WOTEN:**  
 Elective.



**ALENE WOOLERY:**  
 Commercial; Portsmouth High 1; Class Secretary 2; Newsette Staff 3, 4; Glee Club 4; Annual Staff 4.

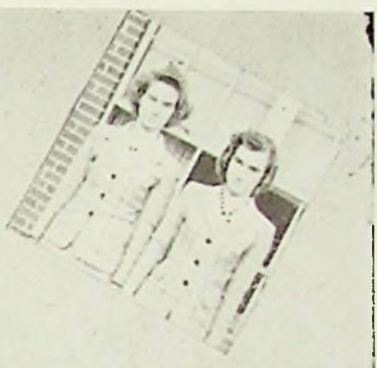
**ILENE ZORNES:**  
 Commercial with Home Ec.; English Club 2; Home Ec. Club 2; Newsette Staff 4.

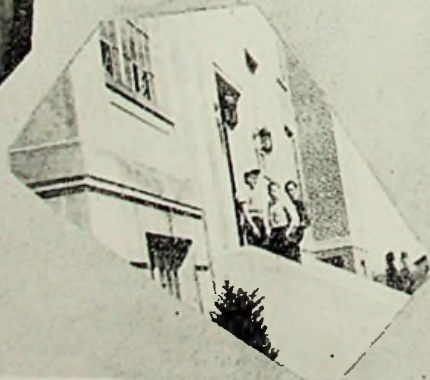


**IRENE ZORNES:**  
 Commercial with Home Ec.; Home Ec. Club 1; English Club 2.

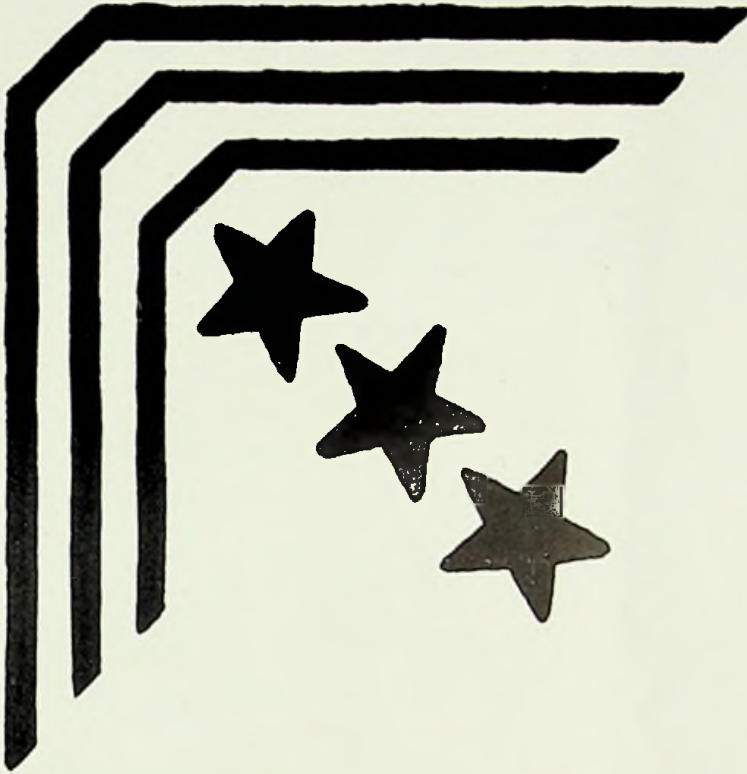


**JOE AVERAGE STUDENT:**  
 "Lump Head"  
 Selective Service: G.A.C. 1, 2; Tin Band 1, 2, 3; Girls Glee Club 1, 2, 3; Rebaters Club 1, 2; Submarine Club 2, 3; Sewing Club 2, 3; Hop-Scotch Team 3, 4; "Tap Root" 3; Vice, Vice President 4.





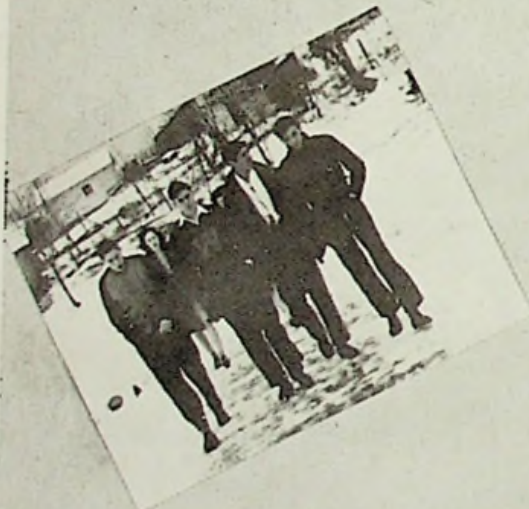




**JUNIORS**



# Class of '45



Just Kids

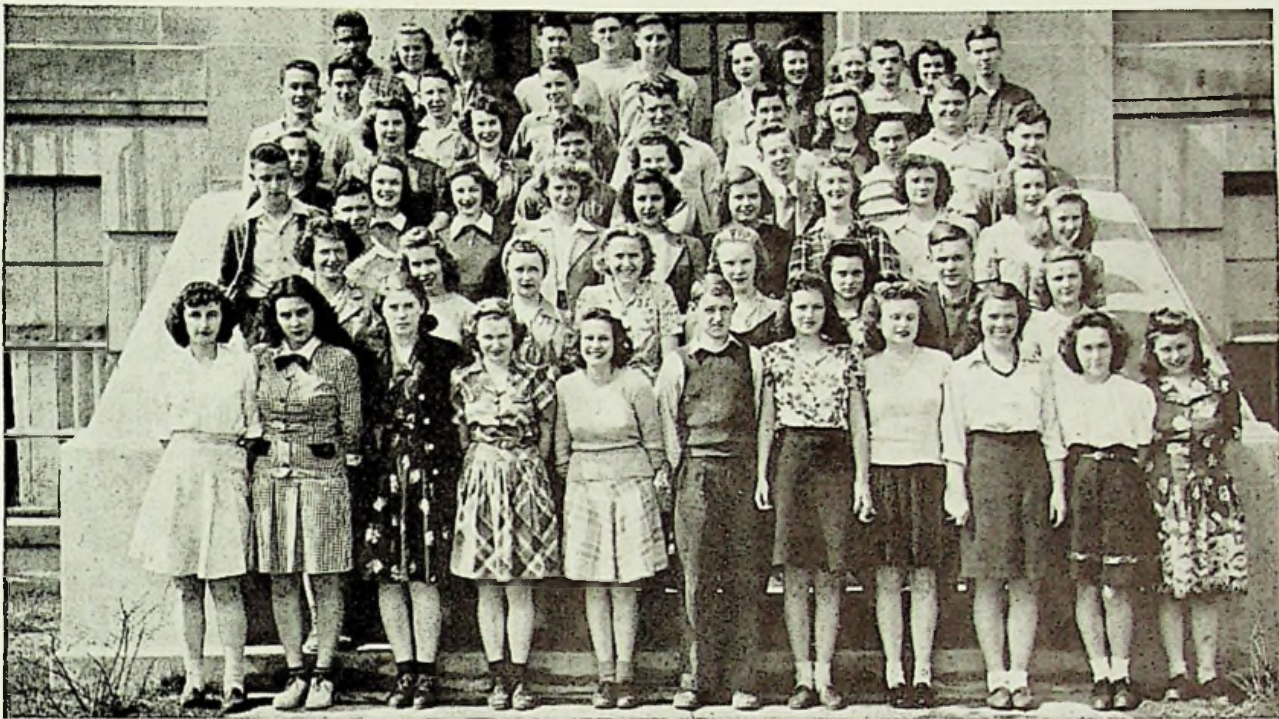
## OFFICERS

President ..... June Moore  
 Vice-president ..... Loretta Meyers  
 Secretary ..... Frank Gardner  
 Treasurer ..... Roderick Patrick

Mrs. Donley — Mrs. Ressinger

## HISTORY OF JUNIOR CLASS

**BRIGADIER GENERAL.** . . . . In the year nineteen and forty-one, approximately one hundred and sixty new rookies were drafted to serve their four years at Camp Washington. Mrs. Davenport and Mr. Stamm were chosen as their commanding officers. The Brigadier Generals have produced many outstanding officers from their battalion. For their good work the honor of becoming Major Generals was bestowed upon them.



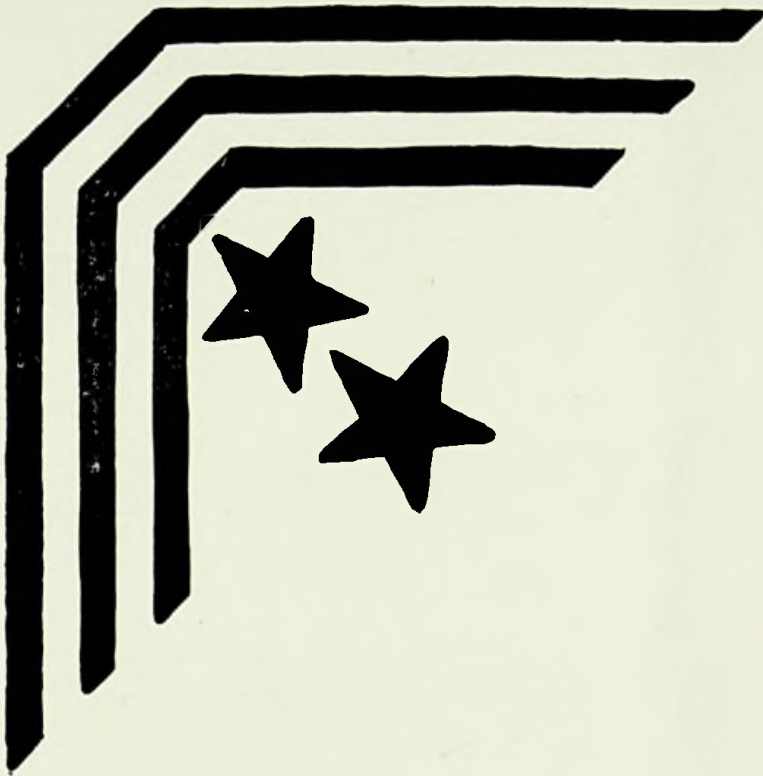
FIRST ROW (left to right): J. Moore, W. Boggs, W. Dunn, E. Blake, B. Knauff, D. Blake, N. Dixon, V. Hale, B. Platt, W. Coriell, D. Conley.  
 SECOND ROW (left to right): E. Shepherd, M. Elmore, K. Hall, J. Cooper, E. Jordan, Y. Adkins, C. Hall, M. Sartin.  
 THIRD ROW (left to right): E. Frasher, E. Coleman, R. Liston, M. Parker, W. White, B. Dunaway, M. Peed, B. Walters, J. Entler, P. McGraw, E. Husto.  
 FOURTH ROW (left to right): E. Keyser, L. Shields, M. George, J. Handel, E. Mignerey, C. Grumme, R. Mutter, D. Keyser.  
 FIFTH ROW (left to right): E. Smalley, J. Hopkins, R. Patrick, E. Porter, A. Matthews, C. Helton, J. Jones, R. Conley.  
 SIXTH ROW (left to right): F. Gardner, C. Lowe, C. Blosser, H. Horsley, M. Bodmer, E. Easter, H. Smith.  
 TOP ROW (left to right): D. Martin, R. Moore, E. Rapp, W. Hilt, M. Strickland.

## JUNIOR CLASS

MAJOR GENERAL. . . . . For their second term Miss Coburn and Mr. Stamm were chosen as their commanders. One of the main events of that year was a party given for these warriors just before they were given a well-earned promotion.

LIEUTENANT GENERAL. . . . . With this, their third term, they have risen to the rank of Lieutenant Generals, only one step away from the long-desired position of Generals. This rank has very important duties attached to it. Mrs. Donley and Mrs. Ressinger were unanimously chosen for this term. They have received rings to designate the camp at which they are stationed. One of the outstanding activities of this year will be the Lieutenant General Prom to which they will cordially invite their superior officers, the Generals.

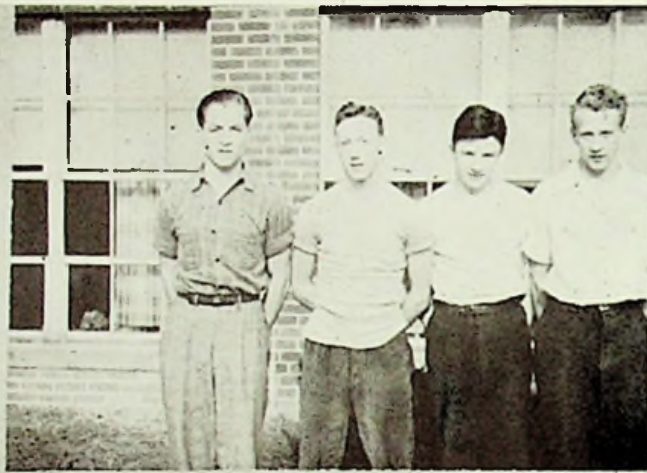




**SOPHOMORES**



# Class of '46



At Last!!

## OFFICERS

President .....	Talmage Estep
Vice-president .....	Norman Burden
Secretary .....	Robert Mignerey
Treasurer .....	Bill Diller

Miss Kegley — Mrs. Mignerey

## SOPHOMORE CLASS

After being successful in finding their way around their first year at Washington, most of the members of this class came back to try another year. At their first meeting, Mrs. Mignerey and Miss Kegley were chosen as their advisors

Soon after school began, the class welcomed the incoming Freshmen class with a party in the school gym.

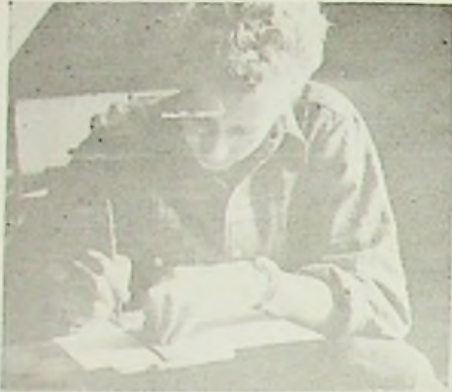


FIRST ROW (left to right): J. McCorkle, M. Hahn, R. Hall, D. Stamper, R. Mullens, T. Lewis, A. Logan, L. Stowers, V. Woods, H. Kelbler, D. Newton, R. Kayser.  
 SECOND ROW (left to right): F. Burchett, A. Ratliff, R. Hazelbaker, L. McCowen, W. Evans, B. Diller, N. Hall, B. Richards, B. Mignerey, E. White.  
 THIRD ROW (left to right): L. Pollard, M. Miller, P. Malone, K. Vernier, O. Kroger, N. Adkins, E. Evans, J. Willis, R. Rapp, S. Distel, B. Matthews, R. Woods, F. Browning, B. Dillow, M. Sowkulech, P. Osborne, E. Stephenson, J. Nolder, J. Daulton.  
 FOURTH ROW (left to right): T. Estep, R. Stepp, L. Shivner, B. Sheets, J. Hall, B. Evans, E. Howard, D. Bussa, M. Parry, B. Winters, R. Hmls, B. Conk, K. McCall, G. Hunter, L. Woten, K. Diller, E. O'Dell.  
 FIFTH ROW (left to right): H. Spradlin, R. Browning, J. Davis, J. Gayhardt, M. Prince.  
 SIXTH ROW (left to right): W. Bridwell, R. Conley, G. Shepherd, D. Mitchell, W. Spears, B. Andre, N. Burden.  
 SEVENTH ROW (left to right): F. Thermon, B. Pyle, E. Farmer, R. Smith, L. Fields, B. Baker.

## SOPHOMORE CLASS

Other social functions of the class were a weiner roast at Legion Lodge, an All-Sophomore party in the gym, and an All-School skating party at Funny Porter's Rink.

These students are eagerly looking forward to next year, and we are sure there will be no grass growing under their feet, with so many things in store for them.







FRESHMAN



# Class of '47



Going Home!

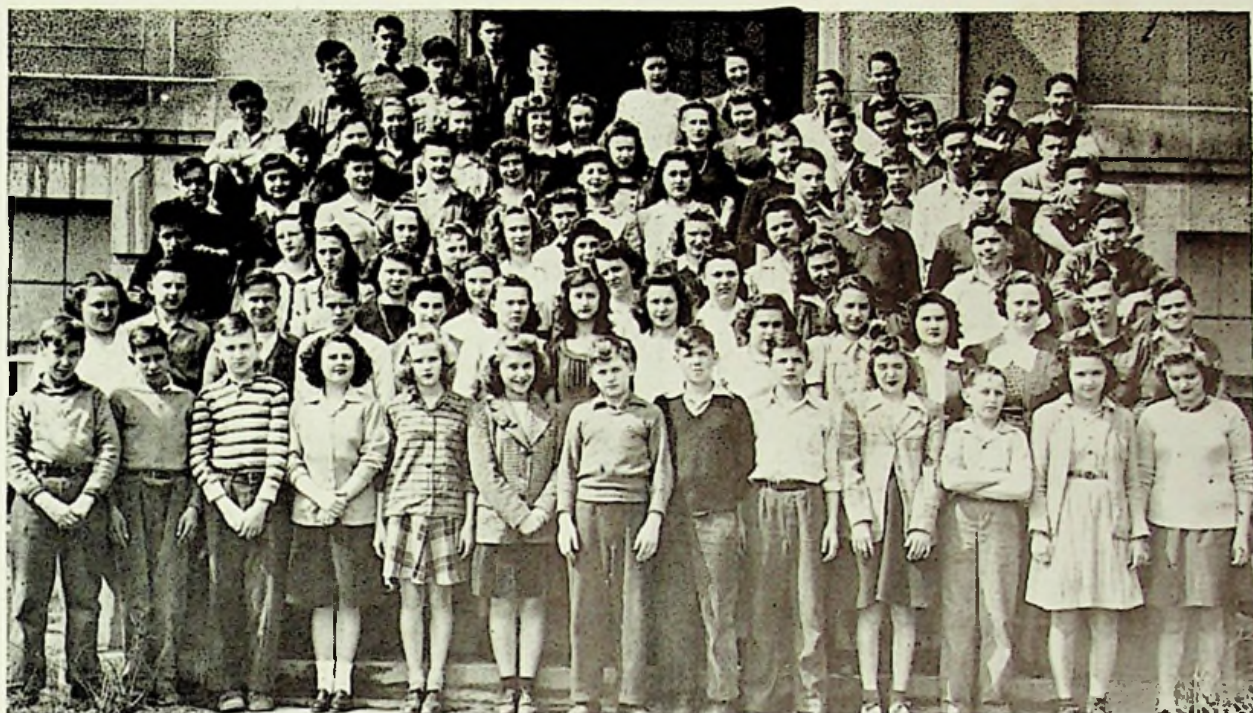
## OFFICERS

President .....	Raymond Miller
Vice-president .....	Betty Boggs
Secretary .....	Ada Rankin
Treasurer .....	John Conley

Mrs. Amberg — Mrs. Kean

## FRESHMAN CLASS HISTORY

This group of young people, bubbling over with pep, and energetic toward their new sort of school life entered the corridors of W. H. S. in the fall of 1943. They started their first year by electing for officers: Raymond Miller, president; Betty Boggs, vice-president; Ada Rankin, secretary; and John Conley, treasurer. They elected Mrs. Amberg and Mrs. Kean as advisors.



FIRST ROW (left to right): C. Hill, P. Gray, H. Williams, C. Craft, B. McCowen, N. Plummer, R. Wiltshire, B. McGinn, G. Mullens, B. Coltrell, B. Dunaway, J. Vicars, M. Sepp.  
 SECOND ROW (left to right): Mrs. Kean, B. Stammer, S. Knauff, K. Martin, R. Ramey, H. Rice, F. Pennington, G. Dyer, M. Wiseman, H. Shivley, R. Cooper, Mrs. Amberg, P. Reiser, J. Tipton.  
 THIRD ROW (left to right): G. Stowers, C. Gabbert, V. Sanford, M. Malone, G. Carrington, R. Carter, B. Boggs, A. Sheffield, M. Smith, E. Bond, S. Risner, L. Reynolds, A. Rankin, M. Shepherd, V. Adkins, C. Windsor, R. Clifton.  
 FOURTH ROW (left to right): B. Platt, D. Fenimore, F. Hall, J. Baker, N. Davis, M. Litz, I. Scott, J. Craycraft, M. Stamm, D. Daulton, B. Knauff, A. Phipps.  
 FIFTH ROW (left to right): R. Harrison, B. Morlarity, D. Davis, L. Litz, F. White, L. Sartin, J. Sibrel, B. Richey, M. Bealor, C. Mowery, B. Lauder, C. Boggs, R. Newman.  
 SIXTH ROW (left to right): H. Wiltshire, V. Boland, R. Miller, R. Arnett, G. Parry, L. Coburn, I. Swords, J. McCall, B. Staten, D. Mann, L. Mullen, J. Blake, T. Craft, B. Jacks.

## FRESHMAN CLASS

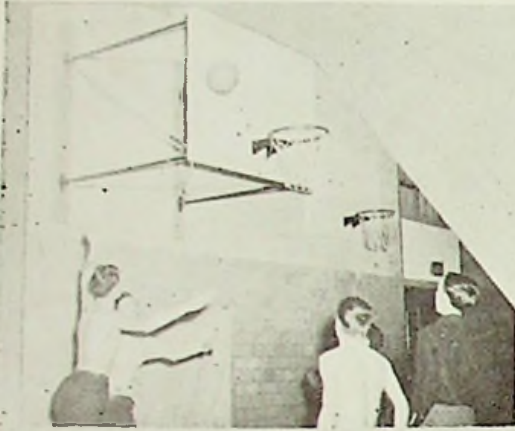
From the start, this group has taken advantage of every opportunity to make themselves known in high school activities; they have joined the Latin or Science clubs in addition to being represented by a reserve cheerleader and participating in basketball.

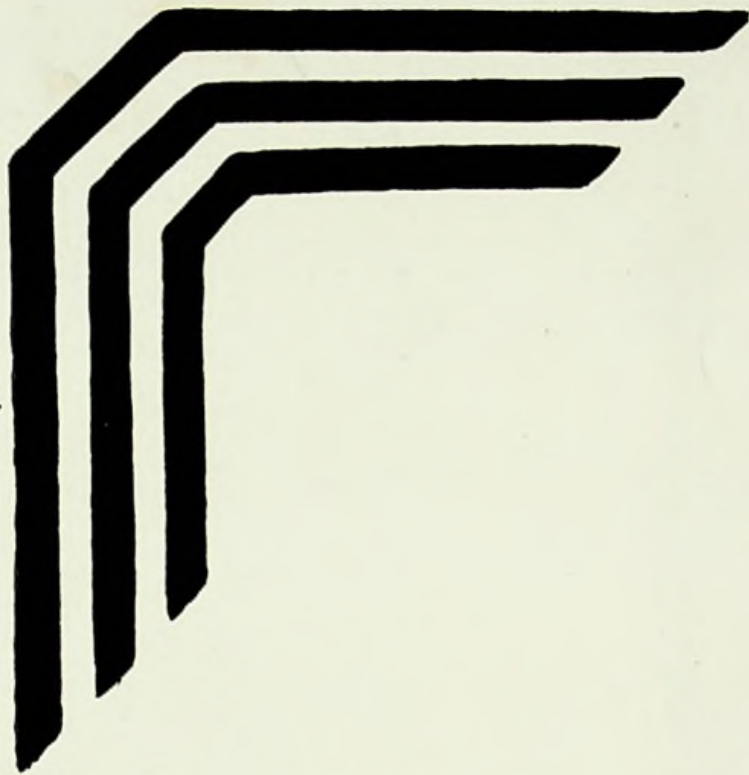
A peppy party in the gym was a get-together for Freshmen only, given in order that everyone might become better acquainted. This put them in good spirits for the remainder of the school year.

Upon giving the class the once-over we find these students have been outstanding scholastically: Jack Blake, Betty Boggs, Roger Cunningham, Norma Plummer, and Sharon Risner.

Great expectations for the class of '47 are based upon the ease with which they adjusted themselves to our rules and customs. The Freshman class seemed to realize the importance of getting a good start in their high school life.

We will miss our guess if this class of '47 does not accomplish great things during the next three years at W. H. S.





# DEPARTMENTS





Typing



Betty, Virginia, Maxine

## COMMERCIAL DEPARTMENT

Miss Bennett and Miss Mitchell are in charge of the commercial department. The facilities available are for a well-rounded course of business training.

The object of this department is to better prepare recruits for business positions they are planning to enter. They are also drilled for the purpose of being neat, accurate, and dependable on the front lines.

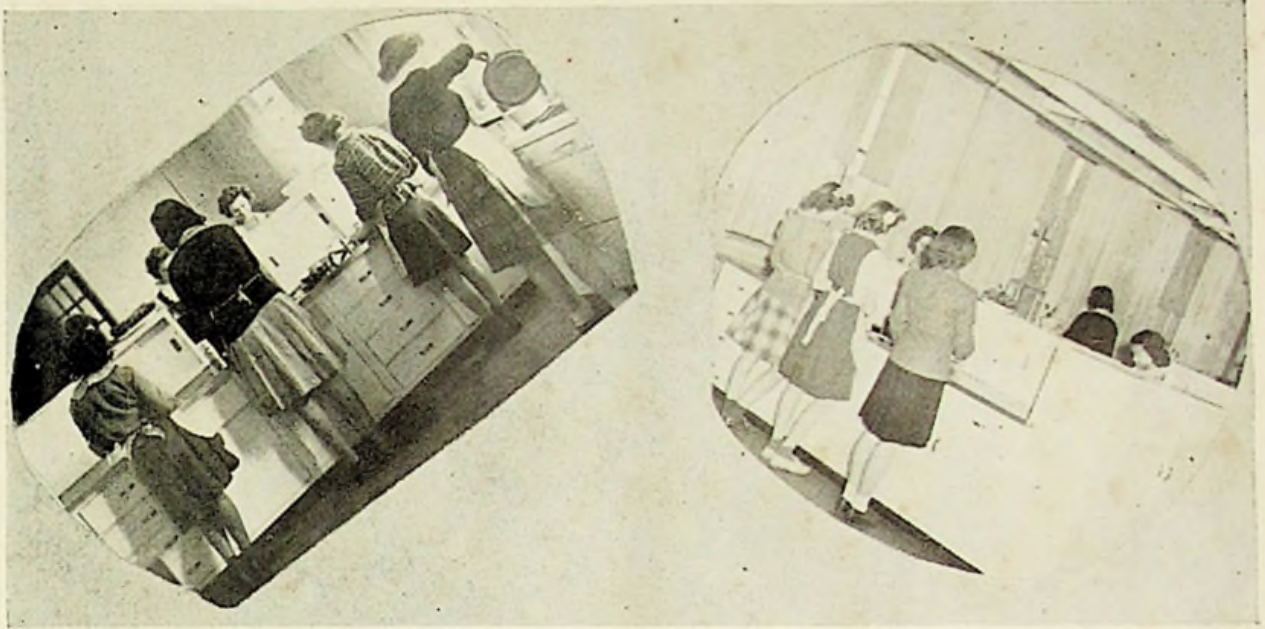
Washington students have always placed or come out victors in the county scholarship tests.



Miss Mitchell

Juniors

Miss Bennett

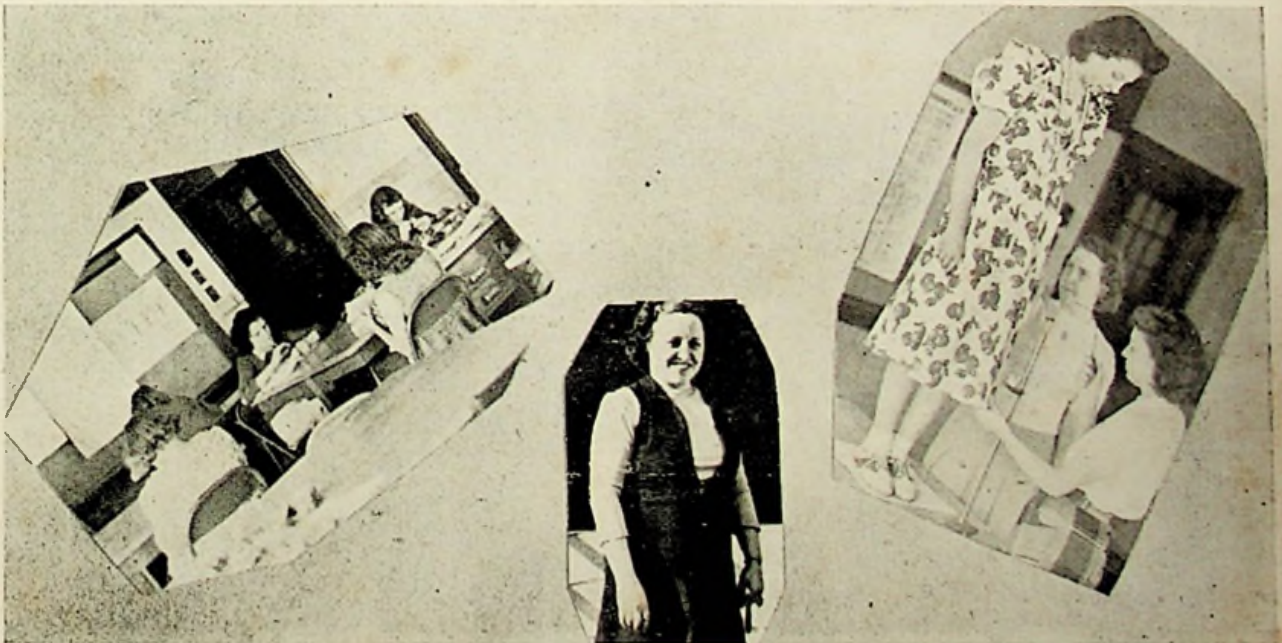


Food Laboratory

## HOME ECONOMICS

"Homemakers of tomorrow". These girls are being trained to meet the problems which will confront them in the future. The department provides a complete course of training in the care and duties of the home. It consists of the most modern equipment.

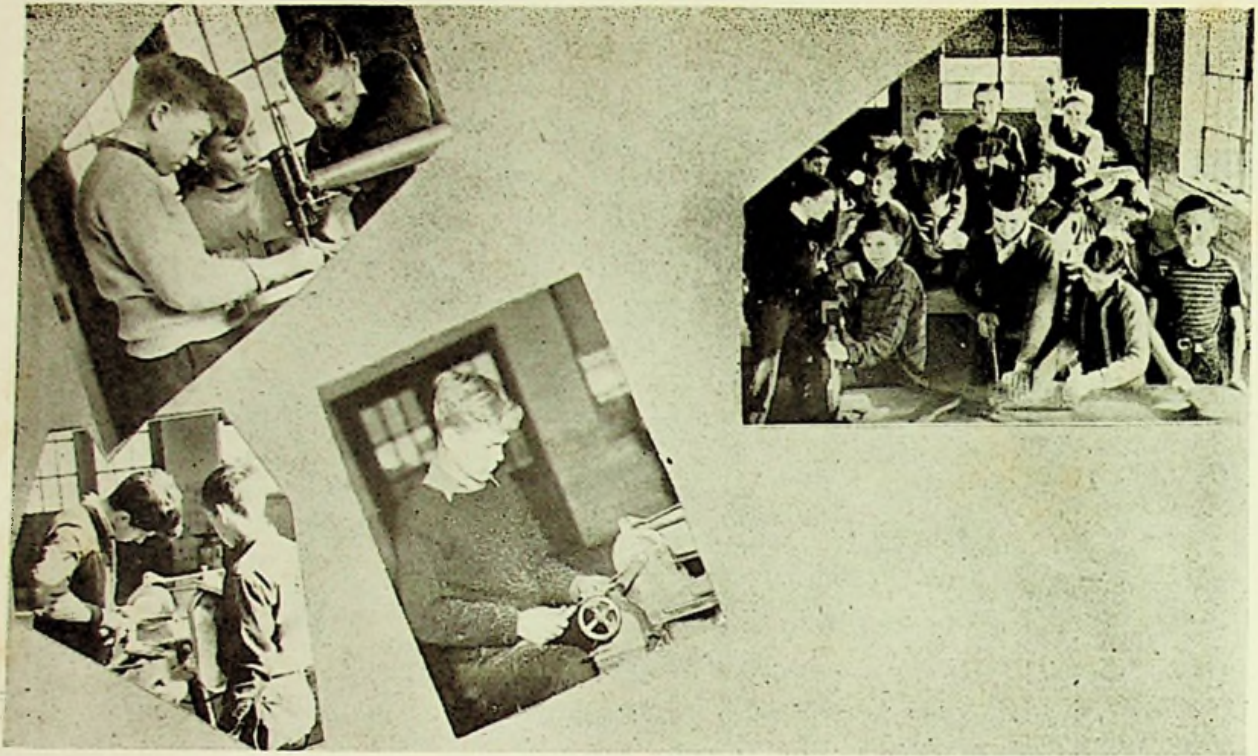
Approximately 75 students are enrolled in the class, under the supervision of Mrs. Daulton and Mrs. Kean.



Clothing Class

Mrs. Kean

Too long!



Mullen, Hill, Staten  
Lathe

Hull

Freshmen

## INDUSTRIAL ARTS

Industrial Arts is the employment of means to accomplish certain ends, pertaining to productive industries. This subject gives the student his first opportunity to create, by his handwork, a product of art or one of industrial use.



Mr. Stamm, Polly

Grinder





FRONT ROW (Left to Right):: A. Hall, I. Mignery, J. Lookabaugh, B. Piatt, J. Moore, M. Strickland, M. James, E. Keyser, R. Diller, D. Conley.  
 SECOND ROW (Left to Right): M. Parker, W. White, L. Veghorst, L. Hall, L. Prince, E. Rapp, J. Smith, L. Meyers, M. Peed, R. Liston, W. Boggs.  
 THIRD ROW (Left to Right):: J. Folsom, F. Gardner, E. Frasher, E. Coleman, J. Handel, J. Sheets, D. Cooley, C. Hall, E. Shephard, R. O'Dell.

## JUNIOR AND SENIOR ENGLISH CLUB

The English Club has always been one of the largest and most outstanding clubs of the school. The average enrollment is from twenty-five to thirty members. It is a society, requiring a grade of VG for membership. This school year has been one of the most successful in the history of the club.

The club programs aim to combine instruction and entertainment. At our March session the guest speaker was Mrs. W. E. Gault, who gave brief reviews of four representative books of present day literature. She discussed these and other books with the club members and answered many of their questions about other recent books.

Thus the English Club serves to promote the social life of its members and at the same time, to maintain a high scholastic ideal.





FRONT ROW (Left to Right): B. Boggs, B. Meriarly, B. Sheets, F. Browning, C. Cabbert, N. Plummer, B. McCowen, C. Craft, R. Wiltshire, D. Conley.  
 SECOND ROW (Left to Right): J. Tipton, W. Evans, R. Cunningham, W. Boggs, K. Pennington, L. Shivner, R. Stepp, J. Lookabaugh, F. Hall, H. Rice, J. Moore, M. Malone.  
 THIRD ROW (Left to Right): J. Folsom, L. Coburn, R. Miller, D. Daulton, J. Sheets, A. Ratliff, L. Hall, L. Prince, C. Hall, J. Blake, R. Conley.

## LATIN CLUB

The Latin Club was organized early in the fall with the members of the Cicero class forming the nucleus. The officers elected were: Jack Sheets, Lucy Hall, Carl Hall, and Dorothy Conley.

At the end of the first six weeks all Freshmen and Sophomore students with a "VG" average were eligible for membership in the club.

During initiation week all the neophytes carried their books in buckets, and both boys and girls carried dolls. The boys wore rouge, lipstick, and hair ribbons; the girls wore their clothes on the wrong side and used no make up.

At the Christmas party held on Thursday evening, the club listened to Bing Crosby's annual rendering of "Adeste Fidelis."



Initiation



Mrs. Donley



FRONT ROW (Left to Right): B. Stone, L. McCowen, K. Hall, V. Mullen, E. Mignery, E. Keyser, B. Evans, A. Roberts, E. Blake.  
 SECOND ROW (Left to Right): F. Gardner, J. Entler, E. Shepherd, C. Hall, D. Criswell, I. Williams, A. Hall, Y. Atkins, J. Risner, D. Martin. (Not pictured—A. Greene, L. Marcum).

## SPANISH CLUB

Officers: Elpha Keyser, President; Emogene Shepherd, Vice President; Alma Hall, Treasurer; Louise Marcum, Secretary.

This being the first year that Spanish has been taught at Washington High, each of the twenty-one students enrolled in the class is a member of the club.

The meetings are held every two weeks. Reports are given on the principal cities, the occupations, government, customs, famous men, and natural resources of the South American countries and other Spanish speaking countries. The relationship of the countries to the United States and to other countries is discussed.

Spanish Songs, such as "La Cucaracha", "Cielito Lindo", "Amapola", and "Besame Mucho" are sung. The club went to see "For Whom the Bell Tolls".



FRONT ROW (Left to Right): B. Boggs, J. Hall, M. Malone, A. Rankin, B. Richey, C. Carrington.  
 SECOND ROW (Left to Right): F. White, M. Reynolds, M. Stepp, N. Plummer, B. McGinn, B. Stamper, B. Dunaway.  
 THIRD ROW (Left to Right): D. Daulton, J. Tipton, L. Blake, R. Cunningham, G. Parry, B. Morlarity, Wiltshire.

## GENERAL SCIENCE CLUB

The General Science Club was organized for the first time this year, consisting of 40 members. The Class conducted a tour through the Ideal Milk Company and intend to visit other commercial centers before the end of the school term.

Our Science department, under the direction of Miss Kegley, is one of the very interesting departments in the school. We expect a larger membership in this organization in future years.



Biology Class



FRONT ROW (Left to Right): D. Martin, J. Lookabangh, W. Clifton, M. M. Liston, R. M. Ollier, R. Bolton.  
 BACK ROW (Left to Right): J. Folsom, R. O'Dell, L. Hail, L. J. Prince, W. Williams, J. Sheets, E. Frasher.

## CHEMFIZ CLUB

"To promote a practical knowledge of the Science of today, that we might be the Scientists of tomorrow".

Early in the school year the Chemistry and Physics classes organized the "Chemfiz Club".

The highlight of the year was the March meeting consisting of a dinner in the Pine Room of the Cameo, and attending the current and stimulating story of the life of one of our great scientists "Madame Curie".

We appreciate the guidance of our advisors, Mrs. Kean and Mr. Bouts.



Chemistry Lab

Mnore, Frazier, Cooley

Prince, Folsom



FRONT ROW: B. Richey, I. McGinn, M. Strickland, L. Weqhorst, E. Mignerey, N. Burden, D. Hilt, S. Risner, T. Dillow, M. Liston, D. Sparks.  
 SECOND ROW: R. Liston, M. Parry, K. Martin, R. Wiltshire, C. Hill, R. Bolton, R. Andre, R. Mignerey, C. Bussa, C. Hall, F. Riehl, R. McGinn, D. Bussa, A. Roberts, W. Hilt, B. Walthers, V. Jones, Mr. Gillette.  
 THIRD ROW: E. Rapp, B. Moore, G. Parry, B. Nolder, T. Frye, J. Folsom, R. Rapp, D. Martin, L. Prince, E. O'Dell, J. Sheets, B. Cook, C. Grumme, B. Cochran, B. Liston.

Our Band was organized in 1940 to give every student the opportunity to learn to play and enjoy instrumental music. Membership is open to any student who qualifies in a try-out and who possesses a musical instrument. In addition some school-owned instruments are loaned to students who pass a native musical ability test with a high score.

Mr. Dale W. Gillette has been our director since the band was organized.

Numbered among the band's appearances are those at home basketball games, Armistice Day and other parades in Portsmouth, and Student Concerts before the High School student body. The Band now has membership of forty-six players and twirlers.



Ruth Liston  
Brass Section



Virginia Jones  
Woodwind Section



Mr. Gillette





FRONT ROW (Kneeling): P. Osborne, R. Shephard, D. Rose, D. Cooley, H. Spradlin, T. Frye, G. Gabbert, E. Porter, R. Mignerey, N. Burden, C. Grumme, C. Bussa, C. Hall, E. Coleman, K. Martin, R. McGinn, R. Wiltshire, J. Conley.  
 SECOND ROW (Seated): P. Wakefield, M. George, L. Shields, M. Bodmer, R. Liston, M. Parker, B. Walthers, V. Jones, W. Boggs, Y. Adkins, C. Bridwell, A. Hall, T. Dillow, A. Rankin, H. Shiveley, B. Piatt, V. Hale, I. McGinn, J. Lookabaugh, E. Conley.  
 THIRD ROW (Standing): G. Dyer, F. White, R. Cooper, D. Martin, B. Noider, M. Litz, J. Scott, J. Baker, E. Pond, B. Richey, J. Gayhardt, L. Shivner, R. Stepp, M. Stepp, R. Smith, S. Distel, K. Hall, L. Shaw, E. Green, G. Shover, E. Rapp, L. Prince, N. Prince, M. Parry, J. Davis, B. Moore.  
 FOURTH ROW (Standing): B. Hollen, A. Woolery, R. Cox, B. Evans, D. Bussa, J. Hall, C. Gabbert, L. Reynolds, R. Carter, B. Cotrell, D. Fenimore, B. Boggs, H. Mustard, A. Roberts, M. Bealor, M. Strickland, W. Hilt, B. Knauff, E. Blake, H. Kelbler, M. Smith, G. Carrington, V. Stanford, R. Newman.

## CHORUS

The mixed chorus is a musical organization open to any student in the high school who loves to sing. A wide selection of music is sung from four part choral classics to modern music of the day.

There are eighty-eight members of the chorus.

Among other things the chorus was instrumental in giving the minstrel show.



Girls Glee Club

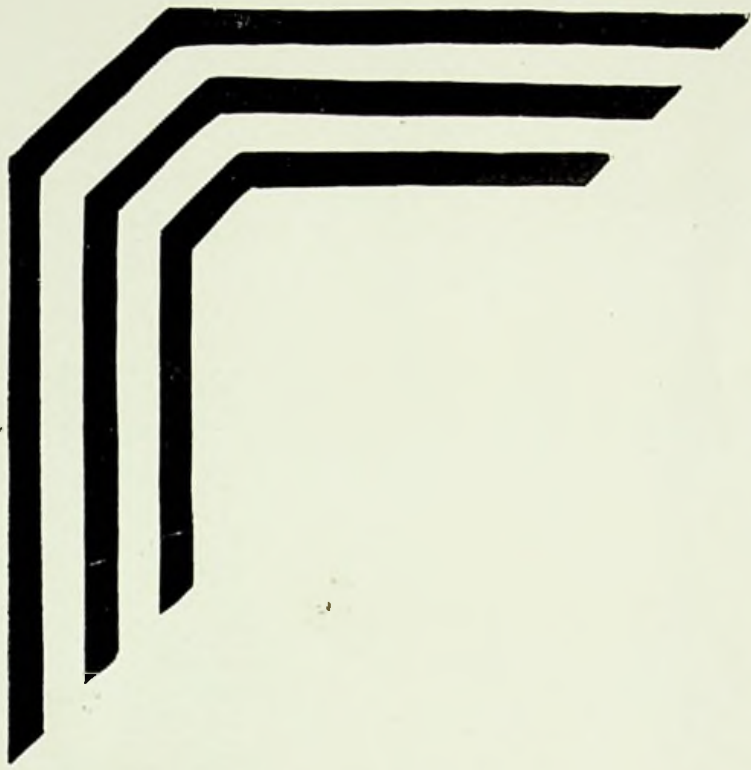
Soloist Ruth Liston

Boys Glee Club

Washington High School  
Senior Class 1948

The page displays 60 individual portraits of students, each in a circular frame. The portraits are arranged in a grid-like pattern. In the center of the page, there is a banner with the text "Washington High School" and "Senior Class 1948". Below the banner is a small illustration of the school building. The portraits are arranged in approximately 10 rows and 6 columns.





# ACTIVITIES



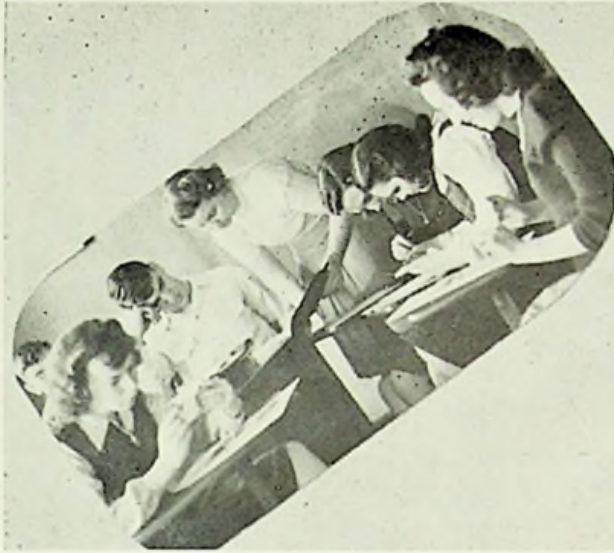
## ANNUAL STAFF



**FRONT ROW (Left to Right):** L. Hall, I. Williams, A. Hall, L. Prince, J. Davis, R. Cox, W. Hamm, G. Shover, E. Green.

**SECOND ROW (Left to Right):** B. Stone, C. Bridwell, E. Lewis, C. Grumme, V. Mullens, A. Woolery, W. Clifton, J. Lookabaugh, M. Liston, R. Diller, R. Bolton.

**THIRD ROW (Left to Right):** O. Reiser, J. Folsom, T. Frye, R. O'Dell, M. James, J. Sheets, G. Gabbert, I. McGinn, L. Weghorst. (Not pictured): A. Greene, L. Marcum.



At Work



Jim



Artist

## ANNUAL STAFF

Editor .....	Raymond O'Dell
Co-Editor .....	Orville Reiser
Business Manager .....	Jack Sheets
Replaced By .....	Irma Williams
Advertising Editor .....	Max Jones
Art Editor .....	Louise Marcum
Activities Editor .....	George Gabbert
Feature Editor .....	Leah Jane Price
Photographers .....	James Folsom, Taulbee Frye
Typists .....	Mary M. Liston
	Rutha Mae Diller, Wilma Clifton, Lois Weghorst, Janet Davis
Faculty Advisor .....	Ruth H. Daulton

## NEWSETTE STAFF



FRONT ROW (Left to Right): V. Mullens, R. Cunningham, R. Mullens, J. Moore, A. Woolery, M. Sartin, M. Strick, Jand. W. Hilt, W. Coriell, D. Conley.  
 SECOND ROW (Left to Right): R. Hall, W. Boggs, E. Rapp, D. Martin, B. Stone, E. White, L. Meyers, E. Mignery, E. Keyser, J. Daws, M. James.  
 THIRD ROW (Left to Right): F. Gardner, J. Entler, C. Buasa, R. Liston, M. Parker, C. Hall, E. Farmer, C. Grumie, R. Rapp, Y. Atkins.



Miss Kegley



Part Of Staff  
Maxine



Typist



# NATIONAL HONOR SOCIETY



**FIRST ROW (Left to Right):** C. Hall, M. Strickland, J. Look  
 abaugh, J. Moore, E. Keyser, W. Boggs, D. Conley, M. Distel.  
**SECOND ROW (Left to Right):** W. Williams, L. Hall, R  
 O' Dell, L. Prince, C. Phipps, W. White.



## "HILLBILLY COURTSHIP"

This play was given by members of the National Honor Society, for the purpose of buying books for the school libraries. The cast was chosen from active members and was directed by Mrs. Daulton, advisor of the society.

The play centered around the life of the Pepin family, a typical hillbilly tribe. The outstanding characteristics of the members were their ability to "hatch up" love affairs and engage in feuds.

This comedy was presented on December 3rd., and the members of the cast are proud to say, it brought the greatest amount of proceeds that has been collected from any other play in the history of the school.



Physics



Pre-flight

## SCHOLARSHIP

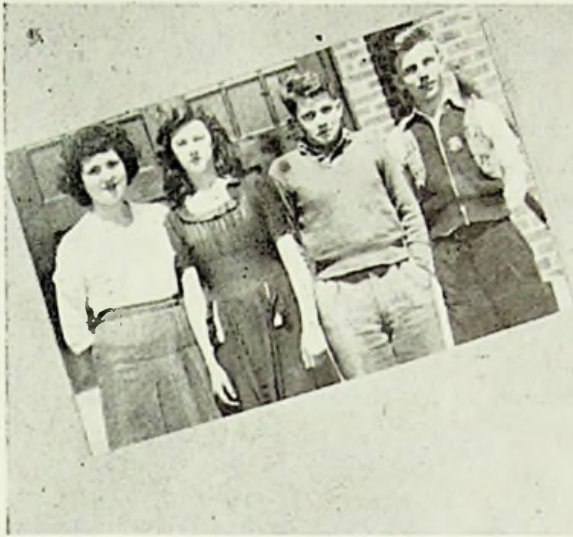
“Think first of Scholarship” is a slogan that has seemed to characterize the students of our high school. A spirit of unity and interest can be manifested in scholarship better than in any other scholastic trait. The development of this trait has also created enthusiasm that has never been emulated. It serves as a stimulus to loftier planes of living and enhances the desire for a better education; thereby, establishing a wealthier nation.



English II

Bookkeeping I

Chemistry



LATIN I & 2



ENGLISH I

**BIOLOGY:** June Moore, Bill Dillow, Ruth Liston.

**GENERAL SCIENCE:** Ann Sheffield, Ray Wiltshire, Roger Cunningham, David Daulton.

**SPANISH:** Carl Hall, Yvonne Atkins, Elpha Keyser, Eileen Mignerey.

**WORLD HISTORY:** Richard Mullens, Mary Parry, Audrey Gardner, Jack Daulton, Bryce Richards, Ralph Kayser.

**AMERICAN HISTORY:** Elmer Frasher, Ray Moore, Frank Gardner, Emogene Shepherd, Elmer Coleman.

**SOCIAL STUDIES:** Willard Williams, Orville Reiser, Marvin Distel, Irma Williams.

**BOOKKEEPING I:** Mary Hahn, Winnifred White.

**LATIN I:** Jack Blake, Roger Cunningham, Faye Pennington.

**LATIN II:** Anna Belle Ratcliff.

**ENGLISH I:** Norma Plumer, Lillian Reynolds, Gertrude Carrington, Sharon Risner, David Daulton, Mary Malone, Betty McCown, Betty Boggs, Hazel Rice.

**ENGLISH II:** Regina Browning, Ruth Stepp, Mary Hahn, Delores Newton, Bill Matthews.

**ENGLISH III:** Carl Hall, Winnifred White, Dorothy Conley.

**ENGLISH IV:** Lucy Hall, Willard Williams.

**GEOMETRY:** Estle White, Bill Dillow.

**ALGEBRA:** Jack Blake, Lonnie Coburn, Leona Stowers.

**ADVANCED ALGEBRA:** Curtis Phipps.

**CHEMISTRY:** Leah Jane Prince, Jean Lookabaugh, Jim Folsom, Dorothy Martin.

**PHYSICS:** Ray Moore, Clarence Adams, Elmer Frasher.

**PRE-FLIGHT:** Carl Woten, Marvin Distel, Curtis Phipps, Louis Schoettle.

The above students are representing Washington High School in the scholarship tests to be given this year. Some of the students are not pictured; the annual had to be in before all of the students were selected. We are very proud of the students and hope that they come out with high ratings.



SEATED (Left to Right): B. Walther, M. Strickland, J. Moore, V. Jones, W. Boggs, R. Liston.  
STANDING Left to Right): C. Hall, C. Bussa, Mrs. Donley, J. Handel, E. Coleman, F. Gardner.

### JUNIOR CLASS PLAY

The Juniors selected as their annual production "Lena Rivers", a drama written by Ned Albert.

This play deals with the plight of Lena Rivers and her beloved "Granny" who was compelled to leave New England and seek refuge in Kentucky at the home of John Livingstone.

Throughout the play were many laughs, and at the same time sad emotions. for Lena.

The production was played before a large audience in the school auditorium.



## SENIOR CLASS PLAY

"The Big Blow Up" was presented by the Senior Class April 28th in the High School Auditorium.

This play has as its leading characters, 4 suitcases, which look so much alike that when their owners get them mixed the result is not only uproariously funny, but is highly exciting because in one of the suitcases is a time bomb that will blow any one who tries to open it to smithereens, and in another is a valuable pearl necklace.

Terry King is a young detective on the track of Mugsy Morris, who stole the necklace. Terry has heard that Mugsy's half sister will meet him in a small town hotel to give him the necklace, which Mugsy had hidden. But Terry doesn't know what the sister looks like. Consequently he is suspicious of Sandra Field and Margot Hinklepuss, two lodgers whose actions are mysterious. But it is the new school-teacher, Cora Johnson, who is the real sister and unwilling helper of Mugsy. Only Cora knows that Mugsy is already living at the hotel, disguised as a deaf old lady. Mugsy plants a time bomb in Terry's suitcase, then finds out that Terry has secured the necklace, which is in the grip with the bomb! Many people try to open the suitcase, not knowing to whom it belongs, and the suspense is terrific! (It all ends up happily, however, but not before many complications have piled up that embroil every guest in the hotel.) Besides the characters already mentioned, there is Beans Parker, the landlady's son, who with Katies Lee, has a great deal to do with the excitement. Then there is Melinda, the maid, who takes pride in the fact that she never does anything right. There are Mr. and Mrs. Field, parents of Sandra, whose fiance Douglas Blake, isn't nearly so mysterious as he seem.

### CHARACTERS TAKING PART

Wilma Clifton	Louise Marcum
Raymond O'Dell	Alice Greene
Mary Margaret Liston	Ruby Bolton
Paul Schwamberger	Maxwell James
Maxine James	Henry Coburn
Taulbee Frye	Rutha Mae Diller

Stage Assistants—Eileen Noel, Orville Reiser

The production was under the direction of Mrs. Ruth H. Daulton.

# Eighth Grade



ROW 1 (left to right): K. Pennington, A. Litz, F. Boggs, D. Bradford, E. Mullins, J. Barber, R. Mead, E. McCall, W. Conley.  
 ROW 2: B. McMillin, M. Hall, C. Hopkins, H. Castle, C. Wessel, D. Sheets, A. Keton, B. Jewett, R. Thompson,  
 ROW 3: V. Harrison, B. Sheppherd, M. Ratcliff, A. Howell, H. Barber, J. Woods, J. Young, B. Murry,  
 ROW 4: O. Gilkerson, H. Sheppherd, D. James, H. Adams, C. Ratcliff, R. Wather, E. Sheppherd, B. Risner.

Forty-three eighth grade students from Dry Run enrolled at Washington, the beginning of this year. They are just getting a touch of the many activities they will encounter the remainder of their school days here at W. H. S.



Logan, Hall, McMillan

Three Kids

"My Pal"



# Varsity

Although Washington wasn't rated as a Class "A" high school, it included in its schedule two Class "A" competitors, also nine Class "B" teams.

The Senators, somewhat inexperienced, won sixteen games, while dropping seven. Most of these games were lost by a margin of one point. Schwamberger proved to be the "ignition spark" of the team, by turning in an excellent season of ball-handling. This, of course, could not have been possible if it were not for the team-work shown by the other members of the team.

Though they were eliminated in the first game of the Scioto County Tournament, it was shown that the Senators are a tough team, and will be hard to overcome in the forthcoming seasons.

There has been a loss of four players, who were seniors, and one junior who entered the Service; but we feel that the remaining ball-handlers will "lead the pack" in good sportsmanship, and in the end, be Victorious.

WE	OPPONENTS	THEY
34	Green	42
60	Valley	25
34	South Webster	21
36	Wheelersburg	30
33	Greenup	35
26	McKell	21
38	Otway	24
29	Green	28
17	Clay	18
38	Glenwood	34
47	South Webster	21
30	Glenwood	31
41	East High	27
40	Otway	21
56	Valley	24
40	Wheelersburg	42
43	Clay	28
28	Minford	30
19	McKell	13
26	Minford	25
33	Greenup	36
50	East High	44
TOURNAMENT:		
35	Wheelersburg	39



**MAX JAMES, Forward**  
Freshman I  
Reserves II  
Varsity III and IV



**PAUL SCHWAMBERGER, Forward**  
Freshman I  
Reserves I  
Varsity II, III and IV



**RAYMOND O'DELL, Forward**  
Freshman I  
Reserves II  
Varsity III and IV



**RAY MOORE, Guard**  
Freshman I  
Reserves II  
Varsity III



**HAROLD COOPER, Guard**  
Reserves II  
Varsity III and IV



**JACK HANDEL, Guard**  
Freshman I  
Reserves II  
Varsity III



**ELMO SMALLEY, Center**  
Freshman I  
Reserves I  
Varsity II and III



**CHARLIE LOWE, Forward**  
Freshman I  
Reserves I  
Varsity II and III



**BOB HAMMOCK, Guard**  
Freshman I  
Reserves I  
Varsity II and III



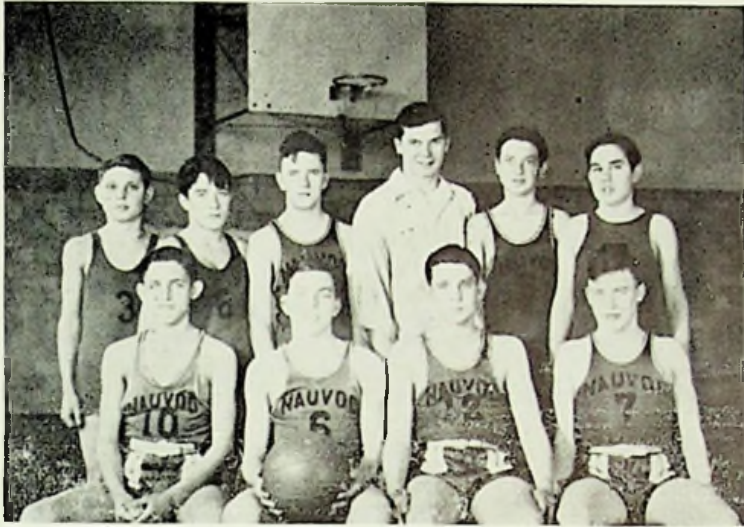
BACK ROW: Harry Smith, L. Wooten,  
R. Moore, Coach Fenton.

FRONT ROW: L. Fields, H. Horsley, E.  
Frasier, J. Hopkins.

Not Pictured: R. Patrick, F. Burchett.

## THE RESERVES

WE	OPPONENTS	THEY
31	Green	6
46	Valley	8
15	South Webster	16
11	Wheelersburg	13
15	Greenup	24
16	McKell	8
28	Otway	15
19	Green	17
27	Clay	7
26	Glenwood	16
30	South Webster	10
21	Glenwood	13
20	East	22
39	Otway	20
19	Wheelersburg	22
24	Valley	19
29	Clay	13
34	Minford	12
37	McKell	12
27	Minford	14
33	East	27
25	Greenup	13



FRONT ROW (left to right): A. Phipps,  
B. Platt, D. Knauff, B. Morlarity.  
SECOND ROW (left to right): B. Lauder,  
R. Harris, R. Newman, Manager J.  
Handel, J. Litz, C. Hopkins.

## FRESHMAN SQUAD



COACH FENTON



Coach Fenton's Managers:  
R. RAPP — B. Jacks



S-S-S-S-S Boom!  
 Ah-h-h-h-h — Senators!  
 Fight! Team! Fight!

#### WASHINGTON LOYALTY

Loyal, loyal to our high school,  
 Wave those banners high.  
 We will fight for you forever,  
 Fight! Fight! Fight's our cry.  
 Blazing her a path of glory,  
 Always brave and true.  
 Loyal, loyal to o'd Washington,  
 We will do our best for you.



Washington is on the beam  
 BEAM, BEAM  
 Washington has got a team  
 TEAM TEAM  
 We're on the beam  
 We've got a team  
 TEAM, BEAM, TEAM!



# Baseball

Due to the Annual going to press before baseball season, here are a few of the anticipated players for 1944.



MAX JAMES



PAUL SCHWAMBERGER



RAYMOND O'DELL



ROY SMITH



ANDREW MATTHEWS

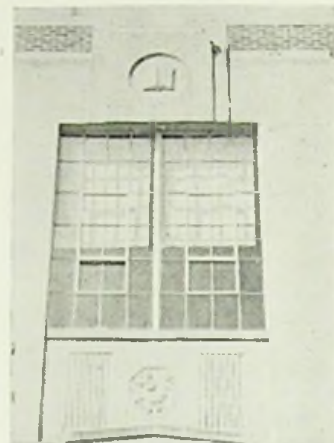


RAY MOORE

# Calendar

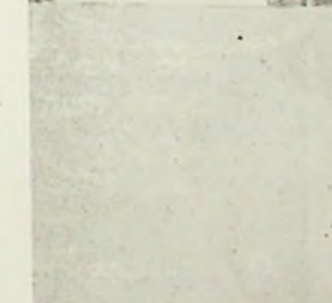
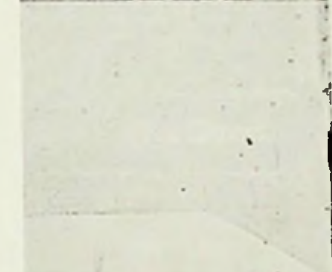


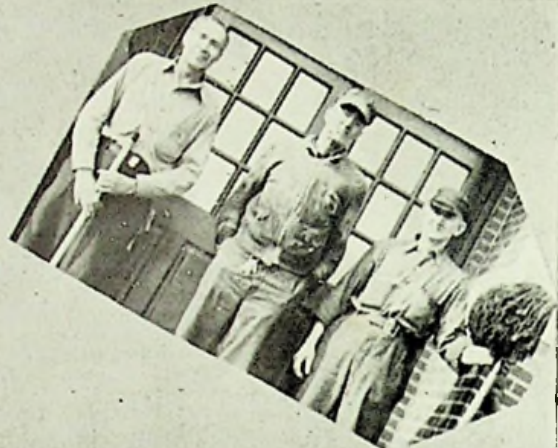
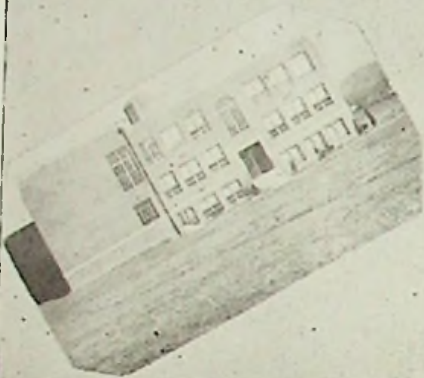
- Sept. 7 School begins.
- Sept. 9 Ready for work.  
"Oh, What a Beautiful Morning!"
- Sept. 21 Honor Society Meeting (initiation).
- Sept. 24 Assembly for new members of the National Honor Society. Newsette Staff selected. Annual Staff chosen—big job ahead!
- Sept. 29 Junior Weiner Roast at Legion Lodge.  
("Blue Rain" almost)
- Sept. 30 Senior Dance.
- Oct. 4 Chemistry Club organized. Let's see, the purpose of this club is-uh-(?)
- Oct. 6 Glee Club try-outs.
- Oct. 8 Freshmen-Sophomore party  
—plenty of pop and fun.
- Oct. 11 First Chemistry Club meeting.
- Oct. 12 "Sail on!"—Columbus Day.
- Oct. 14 Oh my!—Six weeks' tests.
- Oct. 15 Seniors sponsor All-School Party.
- Oct. 27 Initiation for Latin Club. (Poor kids!)
- Oct. 30 Hallowe'en.
- Nov. 3 Junior Dance.  
(New romances, they say.)
- Nov. 11 Band plays to celebrate Armistice Day.
- Nov. 24 Every Pupil Tests.
- Nov. 25 Thanksgiving Day.  
(A memorable day to everyone.)
- Dec. 3 Honor Society Play—  
"Hillbilly Courtship"
- Dec. 7 "Remember Pearl Harbor." — Band plays at Washington-Otway game.
- Dec. 21 "Old Man Winter Arrives."
- Dec. 24 Vacation at last!
- Dec. 25 Christmas Day.
- Dec. 31 New Year's Eve Party.
- Jan. 1 Welcome 1944—  
Time for new resolutions.

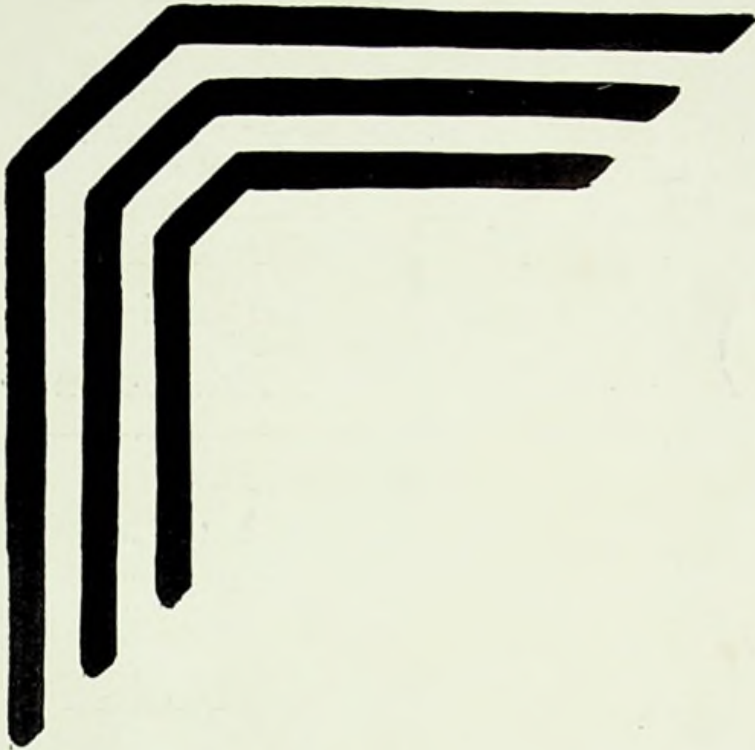




- Jan. 3 Back to school. Ho hum!
- Jan. 5 Senior pictures taken. "OMYGOSH!"
- Jan. 7 "Mysto the Magician."
- Jan. 18 Fourth War Loan Drive launched.
- Jan. 21 Band gives student concert. Dr Dewey, a missionary, talks at general assembly.
- Feb. 3 Sophomore Party.
- Feb. 5 Band makes formations on gym floor. "W" for our team.
- Feb. 19 Basketball Tournament. "'Nuff said!"
- Feb. 29 Leap-Year Party.
- Mar. 3 Basketball Players go to show.
- Mar. 10 Chemistry students see "Madame Curie."
- Mar. 11 Senior Scholarship.  
(Willard really rates.)
- Mar. 15 Junior-Senior Dance.
- Mar. 17 Ice cream sold at lunch time by "Chem-fiz."
- Mar. 22 Merits awarded to Band and Basketball players.
- Mar. 23 Mr. Fletcher speaks at assembly.
- Mar. 27 English Club meeting. Mrs. Gault gives book review.
- Mar. 28 What! Again?—Every Pupil Tests.
- Mar. 31 "Watermelon Minstrel." Fine job, Boys!
- Apr. 6 Skating party at rink. "Oh, my poor bones!"
- Apr. 7 Annual goes to Press— — —
- Apr. 14 Junior Play—"Lena Rivers."
- Apr. 25 Mr. Fenton leaves for Navy—Good Luck!
- Apr. 28 Senior Play—"Big Blow-Up." Scholarship test.
- May 13 Junior-Senior Prom.
- May 14 Baccalaureate.
- May 15 Commencement.
- May 20 So-long W. H. S. and thanks for everything! !







ADVERTISEMENTS



<p>COLLINS' 416 Chillicothe Street PORTSMOUTH, OHIO</p>	<p>KNITTEL'S GULF SERVICE STATION Expert Car Washing and Lubrication 2rd and Washington Streets</p>
<p>QUALITY THAT COUNTS COUNTS' BAKERY Phone 226                      219 Market Street</p>	<p>STAHLER'S PHARMACY "The Drug Store of Service and Economy" Phone 137                      208 Market Street</p>
<p>COMPLIMENTS OF FOLSOM'S Groceries &amp; Lunch  NAUVOO    OHIO</p>	<p>COMPLIMENTS OF PORTSMOUTH INTERSTATE BUSINESS COLLEGE  815 Gallia Street PORTSMOUTH, OHIO</p>
<p>GEISLER'S QUALITY MEATS Phone 294                      221 Market Street</p>	<p>WILHELM'S DEALERS IN FINE JEWELRY 507 Chillicothe Street</p>
<p>COMPLIMENTS OF THE BAKE SHOP 619 Chillicothe Street</p>	<p>COMPLIMENTS OF TOP LUNCH</p>
<p>COMPLIMENTS OF THE KOPY KAT  509 Chillicothe Street  PORTSMOUTH, OHIO</p>	<p>COMPLIMENTS OF A FRIEND  A BOOSTER OF CLEAN SPORTS</p>

DEVOSS AND  
DONALDSON

ARCHITECTS

National Bank Building

PORTSMOUTH, OHIO

J. W. ROBERTSON

*Veterinarian*

917 Chillicothe Street

PORTSMOUTH, OHIO

CONGRATULATIONS  
THE HAZLEBECK CO.  
INSURANCE AND REAL ESTATE

44 National Bank Building

STAR CLOTHING  
COMPANY

Phone 158

840 Gallia Street

REFRESH YOURSELF AT  
PITTS' DAIRY SHOP

NEXT TO PORTSMOUTH HIGH

COMPLIMENTS OF  
SMITH'S CUT-RATE  
DRUGS

Phone 150

Portsmouth, Ohio

Ask for These Good Foods

*Gilbert's*

**VOLUNTEER**

**BEL-DINE**

*At Your Neighborhood*

*Independent Grocer*

GILBERT GROCERY CO.

KINNEY'S

NON-RATIONED SHOES

PRICE RANGES \$1.98 - \$3.45

Saddle Oxfords \$2.29 - \$3.35

417 Chillicothe St.

Portsmouth, O.

GEMPERLINE  
FURNITURE COMPANY

QUALITY FURNITURE

Phone 1063

612-616 Second St.

FOWLER'S

KODAK FINISHING

PORTSMOUTH

OHIO

LYNN  
FUNERAL HOME

CHESS RIGGLES, Mgr.

Phone 11

Portsmouth, Ohio

*Bring Your Car up to Standard*

STANDARD OIL CO.

Dealers Service Station

CONGRATULATIONS,  
GRADUATES!

HARSHA  
JOHNSON CO.

Call us for all Kinds of  
INSURANCE

M-117-120 Masonic Temple

Phone 2920

Portsmouth, Ohio

WE OPEN THE WAY  
TO LOWER PRICES

DOERR'S

THE GENERAL STORE  
*of*  
PORTSMOUTH, OHIO

Phone 451

519-21 Second Street

COMPLIMENTS

CHECKER  
STORE, INC.

Auto Accessories

Tires — Sporting Goods

Phone 90

842 Gallia Street

"BE SURE WITH PURE"

THE PURE OIL CO.

PORTSMOUTH, OHIO



CONGRATULATIONS

AND

BEST WISHES

*Coca-Cola*

TRADE-MARK REG. U. S. PAT. OFF.

THE COCA COLA BOTTLING CO.

PORTSMOUTH, OHIO

ORIGINAL  
HAMBURGER INNS

No. 1  
1547 GALLIA ST.

No. 1½  
6th & GAY

PORTSMOUTH, OHIO

Phone 2227

SEYMORE COAL  
COMPANY

WHOLESALE & RETAIL

4th and Madison Sts.

PORTSMOUTH, OHIO

ROY ZUEFLE

Jeweler

AUTHORIZED DEALER FOR  
Elgin, Hamilton, Gruen, Bulova  
Watches

*Gifts That Last*

CONVENIENT TERMS

533 Second St.

Portsmouth, Ohio

COMPLIMENTS OF

MARVIN JONES

Offnere and Gallia

Phone 1592

# HERFF-JONES COMPANY

*Designers and Manufacturers*

*of*

School and College Jewelry, Graduation  
Announcements, Medals, Cups and Trophies

INDIANAPOLIS, INDIANA

*Jewelers and Stationers to Washington Rural High School*

REPRESENTATIVE: P. J. BURKART

KOBACKER'S

W. T. GRANT  
COMPANY

310 CHILLICOTHE STREET

WURSTER'S  
DRUG STORE  
*The Rexall Store*

Open Every Day, Sundays and Holidays  
From 8 A. M. to 10 P. M.

Phone 272

419 Chillicothe St.

WALKER'S  
SHOE STORE

*Fine Quality Shoes*

PORTSMOUTH

OHIO

CAMEO  
RESTAURANT  
SODA GRILL

*Good Food Is Good Health*

839 Gallia St.          Portsmouth, Ohio

COMPLIMENTS OF  
SHEETS  
FURNITURE COMPANY

*Complete Home Outfitters*

Located out of the High Rent District

526-30 Second St.          Phone 22

ELECTRICITY  
TO SERVE YOU

OHIO POWER CO.

THE CRICHTON  
OFFICE SUPPLY CO.

*Everything for the Office*

740 Fifth St.          Portsmouth, Ohio

COMPLIMENTS OF  
KAY JEWELRY CO.

817 Gallia Street

PORTSMOUTH, OHIO

SELBY SHOES

1007 Gallia Street

*QUALITY SHOES*

FOR MEN, WOMEN, CHILDREN

Phone 3120

Paints — Glass — Wall Paper

PORTSMOUTH  
PAINT COMPANY

Gallia at Findlay

SAMUEL LEVI & CO  
FURNITURE

930-932 Gallia St. at Findlay

*Shop LEVI'S. . . Save Money!*

CONGRATULATIONS

TO THE

CLASS OF 1944

FROM

MARTING'S

*"One of Ohio's Good Stores"*

PORTSMOUTH, OHIO

RICHMAN BROS. CLOTHES

Direct from our factory to you

You save the middle man's profit

RICHMAN BROS.

311 Chillicothe Street

STYLE-RIGHT CLOTHES

FOR THE

MODERN MISS

ATLAS FASHION

ROBERTS & CO.

*Credit Jewelers*

CONGRATULATE GRADUATES

Nationally Advertised  
Watches, Jewelry, Radios

No Extra Charge for Credit

421 Chillicothe St.    Portsmouth, Ohio

THE

PEOPLES STORE

Clothing for Men, Women and Children

*The Store of Friendly Credit*

308 Chillicothe St.

Chas. Grumme, Mgr.

WOLFF

GOOD CLOTHES

DAULTON BROS.

*Groceries and Meats*

DELIVERY SERVICE

2nd and Jefferson    Portsmouth, Ohio

COMPLIMENTS OF  
**HILT'S LUNCH**

4th and Calvert Lane

Phone 0117-R

**STONE'S  
FOOD MARKET**

*Meats, Fruits, and  
Staple Groceries*

123 Market Street

Phone 647

**AL J. MELCHER  
MELCHER  
FUNERAL HOME**

1417 Offnere Street

Portsmouth, Ohio

Phone 160

**LINBERG INN**

*We Specialize in Fried Chicken  
AND OTHER FOODS  
To Suit Your Taste*

Just One Mile West of Portsmouth, Ohio

*Say It With Flowers*  
COMPLIMENTS OF  
**HERMS FLORAL**

**STEWART'S  
DRUG STORE**

PRESCRIPTION SPECIALISTS

Phone 2447

904 Gallia Street

**COMMUNITY SALES CO**  
M. V. FARVER, Mgr.  
Where Price Sells, Quality Tells  
630-632 Second Street

COMPLIMENTS OF  
**HALL'S GROCERY**

Portsmouth, Rt. 1

**WRIGHT HATCHERIES**  
*ALL-WRIGHT CHICKENS*  
*Feeds and Supplies*

Peebles, Ohio

Portsmouth, Ohio

**PORTSMOUTH  
FUR SHOP**  
Cleaning and Glazing  
Repairs of All Kinds

Phone 330

709 Chillicothe St.

<p><b>CLYDE HERDMAN</b>  <i>General Merchandise</i>          GAS AND OIL          Phone Sub-8021 Buena Vista, Ohio</p>	<p>COMPLIMENTS OF  <b>JIMMIE'S PLACE</b>          BEST OF LUCK TO THE CLASS OF '44          Good Eats Sandy Springs</p>
<p>COMPLIMENTS OF  <b>NEWMAN'S PLACE</b>  <i>Groceries and Feed</i>          GAS AND OIL          Ph. Sub-9203 2m. east of Buena Vista</p>	<p><b>FLAGG ORCHARD</b>  <i>Apples and Cider</i>          C. E. Drumheller Sub. 9420          Buena Vista Pike</p>
<p><b>R. E. MILLER</b>  <i>General Merchandise</i>          FRESH MEAT AND VEGETABLES          Phone Sub. 9202 Buena Vista, Ohio</p>	<p><b>BOWSER'S</b>          A COMPLETE LINE OF  <i>Groceries and Meats</i>          Ph. 0109-1 Washington Blvd.</p>

BUY  
 UNITED STATES  
 WAR STAMPS  
 AND BONDS

# AUTOGRAPHS

THE FREE PRESS COMPANY  
Portsmouth, Ohio



